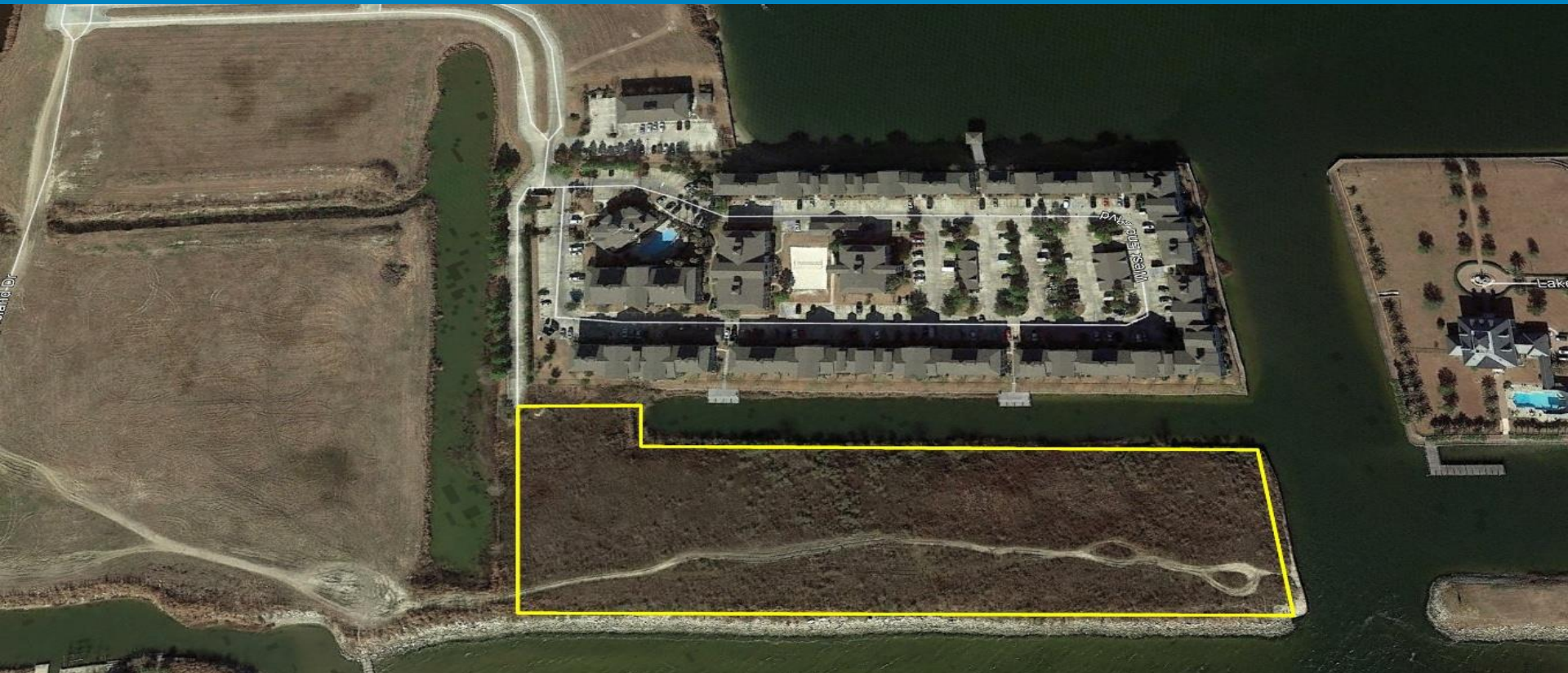




LAKEFRONT DEVELOPMENT SITE FOR SALE

62300 WEST END BLVD. | SLIDELL, LA



LAND AREA

7.8826 + / - acres bounded by Lake Pontchartrain and an access canal.
The property has access to the canal.

ZONING

PUD (requires re-zoning for development)

CONDITION

The lot is presently unimproved, there is paved ingress / egress to West End Blvd.

SALE PRICE

\$1,999,000.00

Max J. Derbes, Inc.
REALTORS ■

CONTACT

BERT DUVIC, CCIM, SIOR

OFFICE

504.733.4565
bertd@maxderbes.com

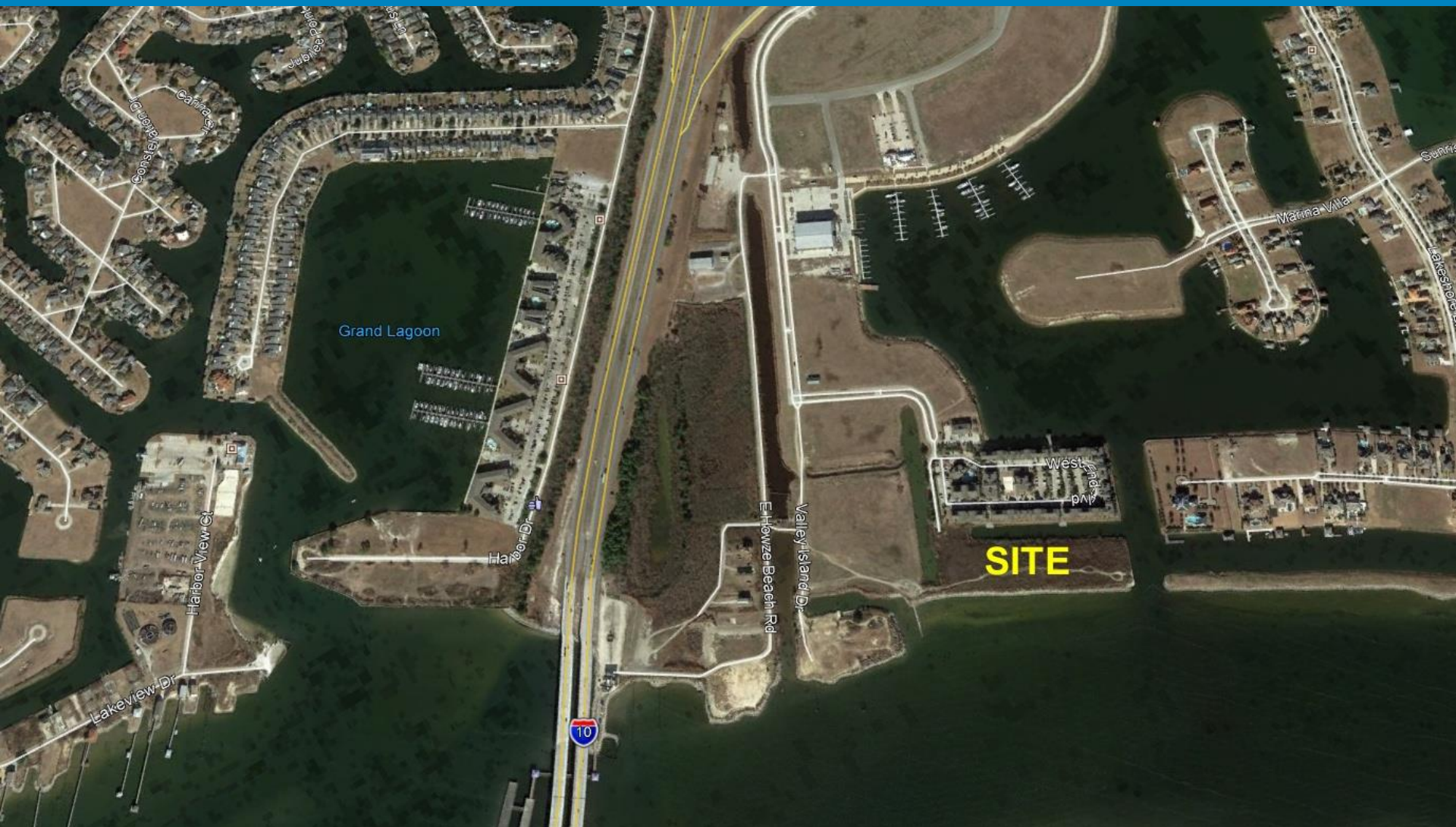
Max J. Derbes, Inc.
5440 Mounes Street, Ste 100
New Orleans, LA 70123





LAKEFRONT DEVELOPMENT SITE FOR SALE

62300 WEST END BLVD. | SLIDELL, LA



Max J. Derbes, Inc.
REALTORS ■

CONTACT
BERT DUVIC, CCIM, SIOR

OFFICE 504.733.4565
bertd@maxderbes.com

Max J. Derbes, Inc.
5440 Mounes Street, Ste 100
New Orleans, LA 70123

