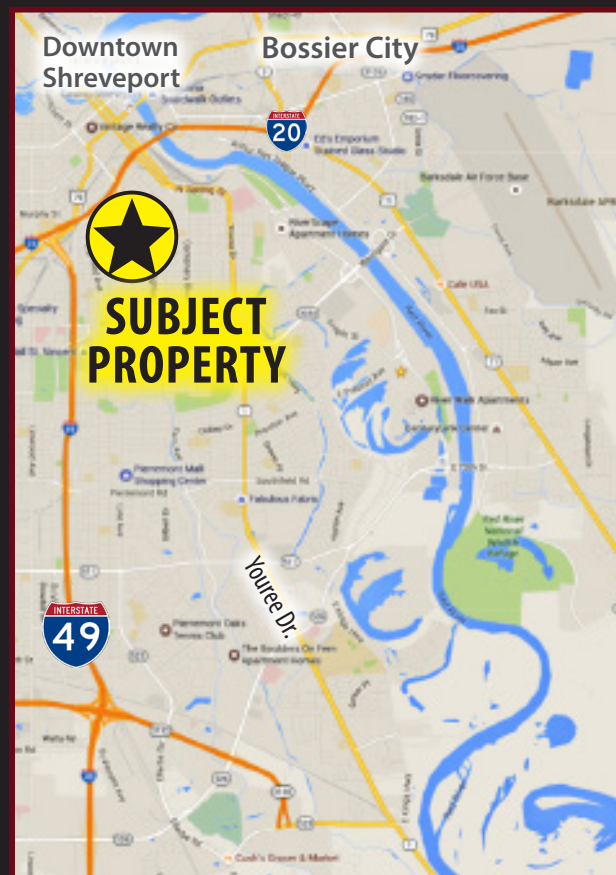




OFFICE/RETAIL SUITES AVAILABLE FOR LEASE

1513 LINE AVENUE, SHREVEPORT, LA 71101

- Office Suites Available for Lease, from 312-10,408 SF
- Suite 355 was previously occupied by the US Census Bureau, and in 2019 they invested nearly half a million dollars in their buildout of suite 355. The suite has an open floor plan with a couple private offices, breakroom, and restrooms included in the space.
- Parking garage consist of roughly 221 spaces
- Office building is located within one-third of a mile to I-20 for easy access to the interstate
- Shreveport's largest concentration of medical facilities consisting of four hospitals is located just a minute from the property.
- Zoned C-UC
- Great tenant mix consisting of medical, government, general office, retail, and a meal-prep company.
- Traffic Count: 21,202 average cars per day Line & Jordan



For more information, contact:

Michael Berlin, Associate Broker | mberlin@vintagerealty.com | 318.222.2244

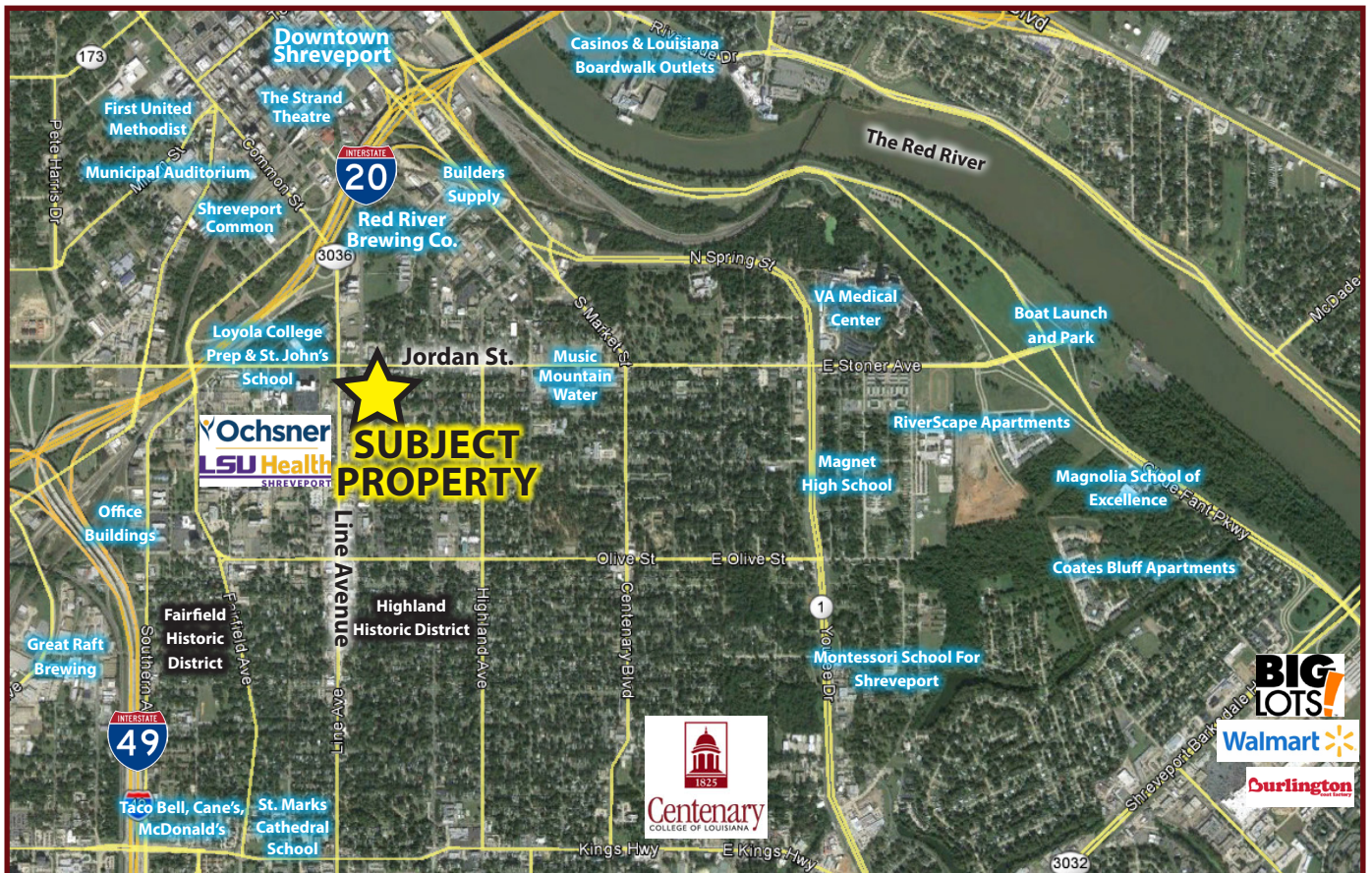
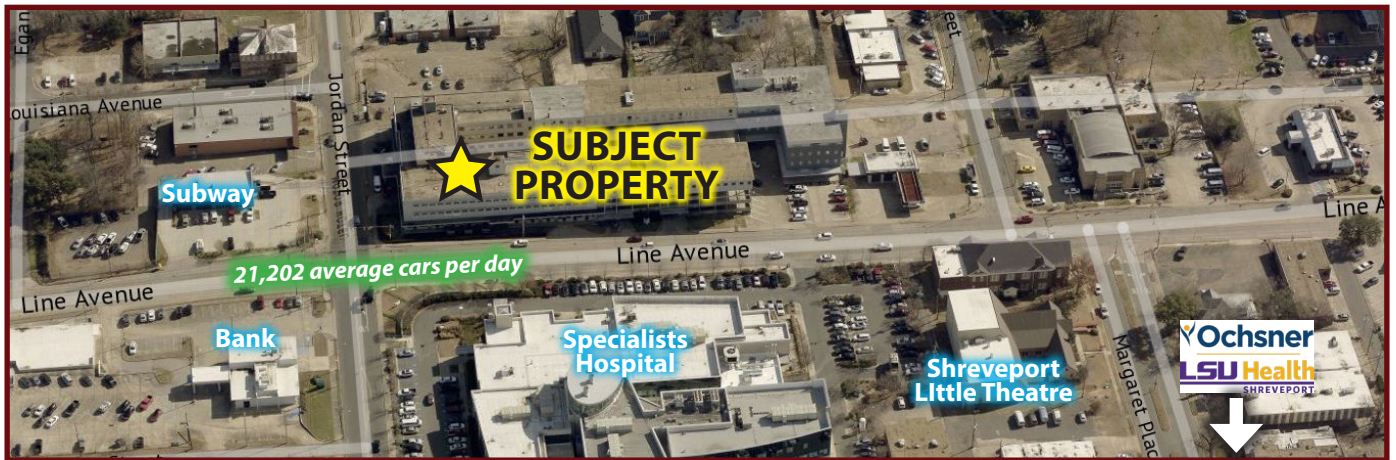
Peyton Massey | pmassey@vintagerealty.com | 318.222.2244

ALL INFORMATION CONTAINED HEREIN IS BELIEVED TO BE ACCURATE, BUT IS NOT WARRANTED AND NO LIABILITY OF ERRORS OR OMISSIONS IS ASSURED BY EITHER THE PROPERTY OWNER OR VINTAGE REALTY COMPANY OR ITS AGENTS AND EMPLOYEES. PRICES AS STATED HEREIN AND PRODUCT AVAILABILITY IS SUBJECT TO CHANGE AND/OR SALE OR LEASE WITHOUT PRIOR NOTICE, AND ALL SIZES AND DIMENSIONS ARE SUBJECT TO CORRECTION. REV 4/2025



OFFICE/RETAIL FOR LEASE

1513 LINE AVENUE
SHREVEPORT, LA 71101



For information, please contact:

Michael Berlin, Associate Broker | mberlin@vintagerealty.com | 318.222.2244

Peyton Massey | pmassey@vintagerealty.com | 318.222.2244

ALL INFORMATION CONTAINED HEREIN IS BELIEVED TO BE ACCURATE, BUT IS NOT WARRANTED AND NO LIABILITY OF ERRORS OR OMISSIONS IS ASSURED BY EITHER THE PROPERTY OWNER OR VINTAGE REALTY COMPANY OR ITS AGENTS AND EMPLOYEES. PRICES AS STATED HEREIN AND PRODUCT AVAILABILITY IS SUBJECT TO CHANGE AND/OR SALE OR LEASE WITHOUT PRIOR NOTICE, AND ALL SIZES AND DIMENSIONS ARE SUBJECT TO CORRECTION. 4/2025

OFFICE/RETAIL FOR LEASE

1513 LINE AVENUE
SHREVEPORT, LA 71101



For information, please contact:

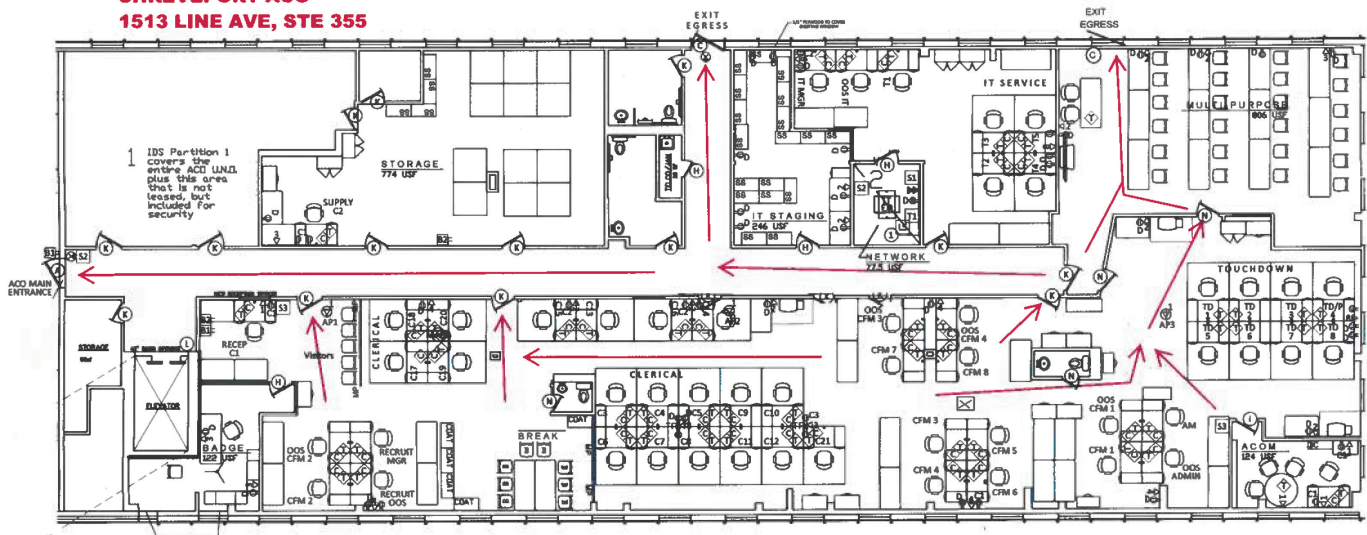
Michael Berlin, Associate Broker | mberlin@vintagerealty.com | 318.222.2244

Peyton Massey | pmassey@vintagerealty.com | 318.222.2244

ALL INFORMATION CONTAINED HEREIN IS BELIEVED TO BE ACCURATE, BUT IS NOT WARRANTED AND NO LIABILITY OF ERRORS OR OMISSIONS IS ASSURED BY EITHER THE PROPERTY OWNER OR VINTAGE REALTY COMPANY OR ITS AGENTS AND EMPLOYEES. PRICES AS STATED HEREIN AND PRODUCT AVAILABILITY IS SUBJECT TO CHANGE AND/OR SALE OR LEASE WITHOUT PRIOR NOTICE, AND ALL SIZES AND DIMENSIONS ARE SUBJECT TO CORRECTION. 4/2025

1513 LINE AVENUE
SHREVEPORT, LA 71101

SHREVEPORT ACO
1513 LINE AVE, STE 355



Peyton Massey | pmassey@vintagerealty.com | 318.222.2244

ALL INFORMATION CONTAINED HEREIN IS BELIEVED TO BE ACCURATE, BUT IS NOT WARRANTED AND NO LIABILITY OF ERRORS OR OMISSIONS IS ASSURED BY EITHER THE PROPERTY OWNER OR VINTAGE REALTY COMPANY OR ITS AGENTS AND EMPLOYEES. PRICES AS STATED HEREIN AND PRODUCT AVAILABILITY IS SUBJECT TO CHANGE AND/OR SALE OR LEASE WITHOUT PRIOR NOTICE, AND ALL SIZES AND DIMENSIONS ARE SUBJECT TO CORRECTION. 4/2025