

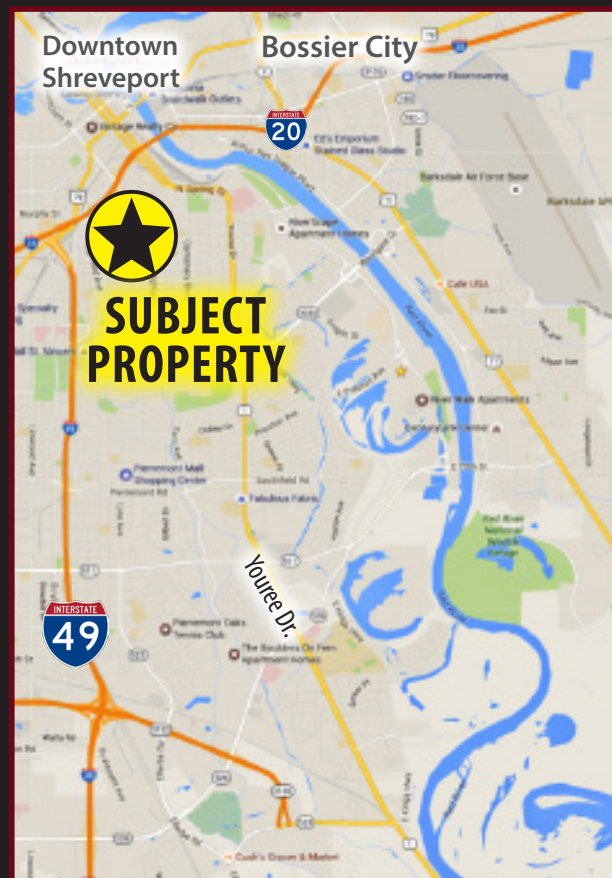


OFFICE/RETAIL SUITES AVAILABLE FOR LEASE

MID CITY PLAZA, 1545 LINE AVENUE, SHREVEPORT, LA 71101

PROPERTY HIGHLIGHTS:

- Office Suites Available for Lease, from 85-1,883 SF
- Competitive Lease Rates
- Variety of Sizes for Different Business Needs
- Central Location with Easy Access to Downtown Shreveport, I-20, and I-49
- Ample Parking w/ Attached Parking Garage
- Conveniently Located Near Successful Businesses and Restaurants
- Zoned C-UC allowing for a variety of uses
(Shreveport Unified Development Code)



For more information, contact:

Michael Berlin, Associate Broker | mberlin@vintagerealty.com | 318.222.2244

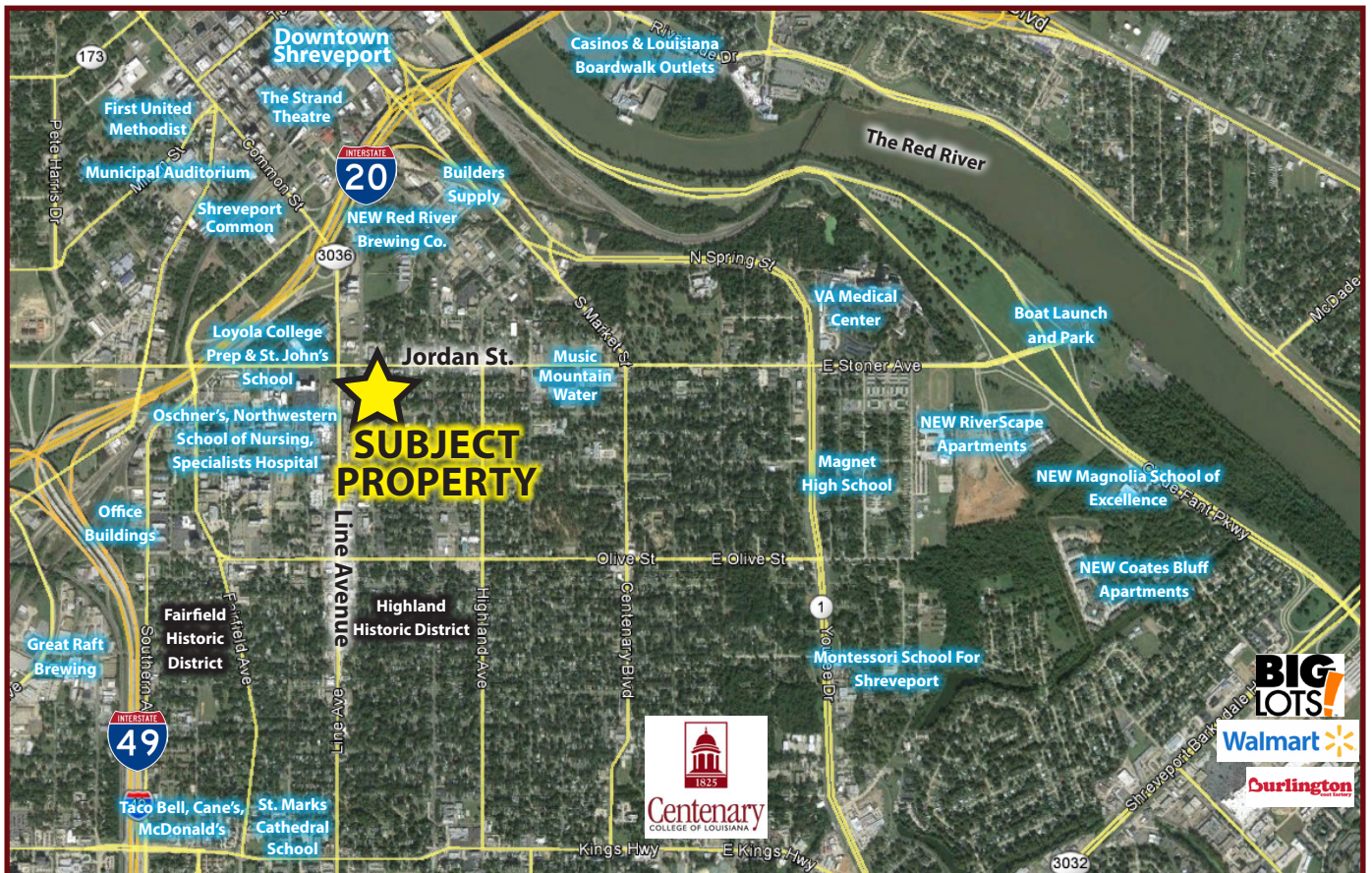
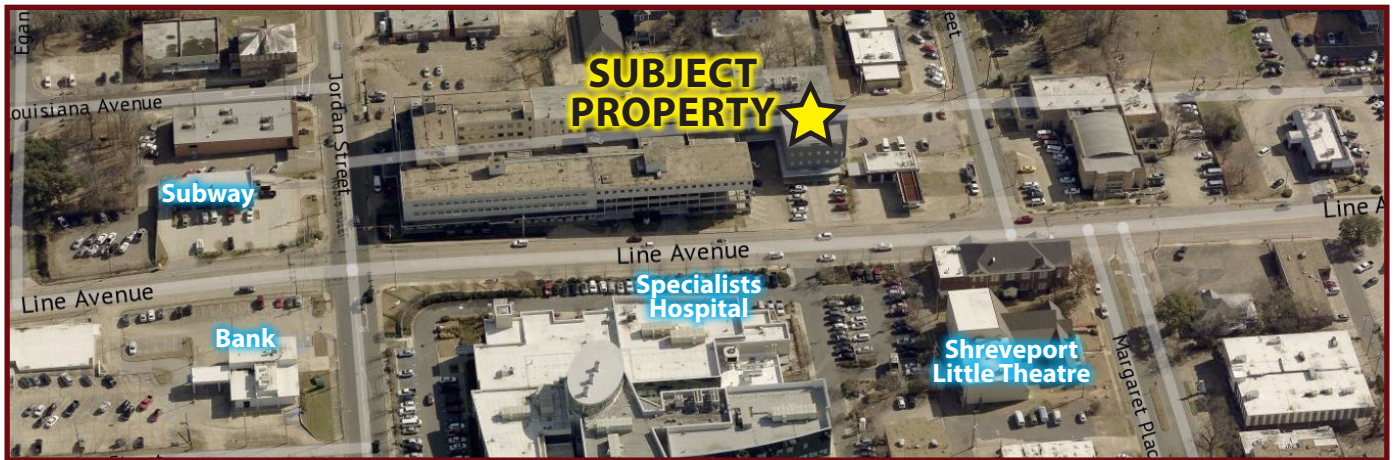
Peyton Massey | pmassey@vintagerealty.com | 318.222.2244

ALL INFORMATION CONTAINED HEREIN IS BELIEVED TO BE ACCURATE, BUT IS NOT WARRANTED AND NO LIABILITY OF ERRORS OR OMISSIONS IS ASSURED BY EITHER THE PROPERTY OWNER OR VINTAGE REALTY COMPANY OR ITS AGENTS AND EMPLOYEES. PRICES AS STATED HEREIN AND PRODUCT AVAILABILITY IS SUBJECT TO CHANGE AND/OR SALE OR LEASE WITHOUT PRIOR NOTICE, AND ALL SIZES AND DIMENSIONS ARE SUBJECT TO CORRECTION. REV 4/2025



OFFICE/RETAIL SUITES FOR LEASE

MID CITY PLAZA
1545 LINE AVENUE, SHREVEPORT, LA 71101



For information, please contact:

Michael Berlin, Associate Broker | mberlin@vintagerealty.com | 318.222.2244

Peyton Massey | pmassey@vintagerealty.com | 318.222.2244

ALL INFORMATION CONTAINED HEREIN IS BELIEVED TO BE ACCURATE, BUT IS NOT WARRANTED AND NO LIABILITY OF ERRORS OR OMISSIONS IS ASSURED BY EITHER THE PROPERTY OWNER OR VINTAGE REALTY COMPANY OR ITS AGENTS AND EMPLOYEES. PRICES AS STATED HEREIN AND PRODUCT AVAILABILITY IS SUBJECT TO CHANGE AND/OR SALE OR LEASE WITHOUT PRIOR NOTICE, AND ALL SIZES AND DIMENSIONS ARE SUBJECT TO CORRECTION. 4/2025