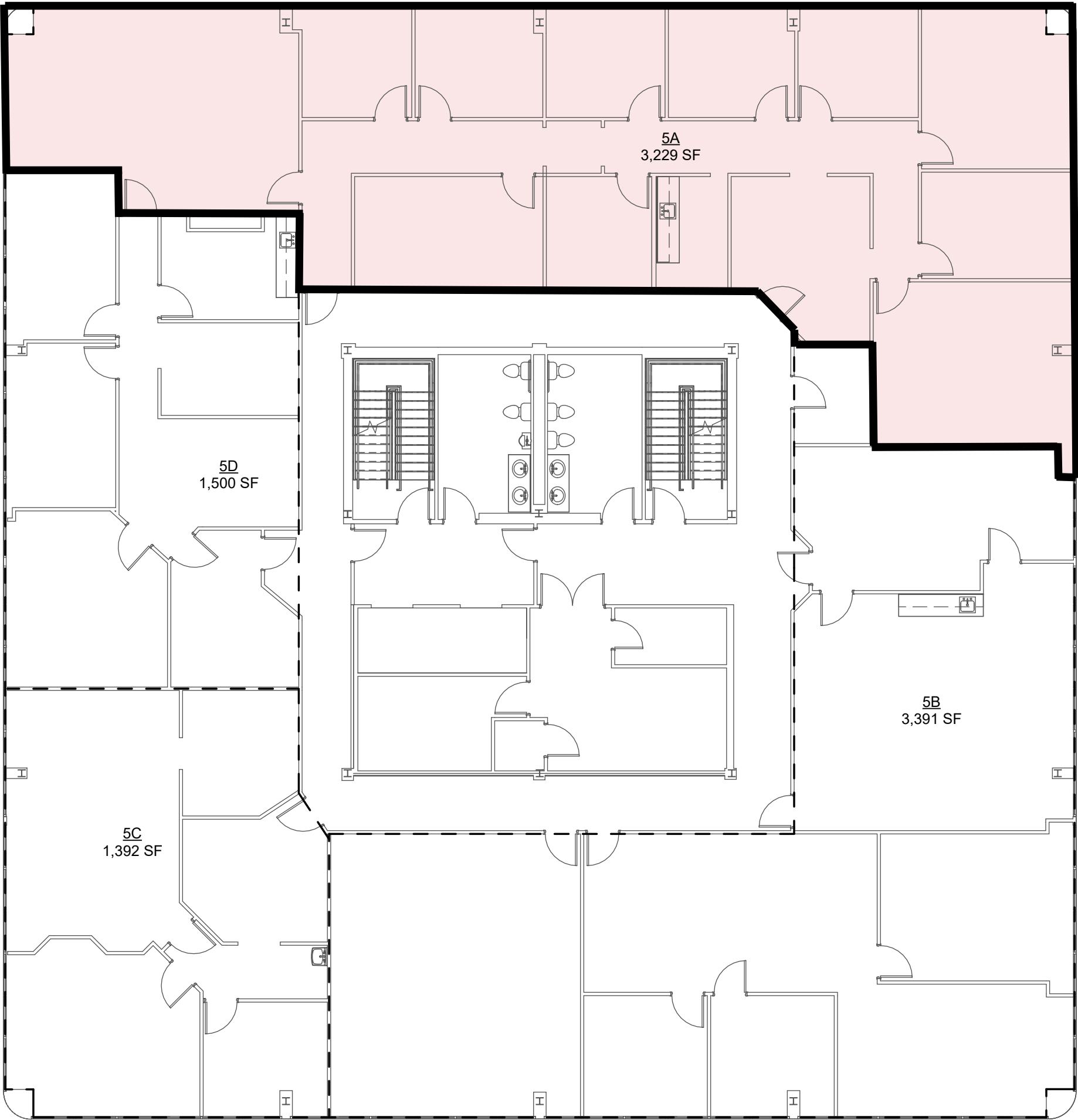


E:\2025\25 TENANTS\2501 LAHAYE CENTER\08 Drawings\ARCH\REV\1\2501 LAHAYE CENTER (R25)1.dwg

NAME	USABLE	COMMON (16%)	RENTABLE SF
Suite 503 (5A)	2,784 SF	445 SF	3,229 SF
5B	2,923 SF	468 SF	3,391 SF
Suite 504 (5C)	1,200 SF	192 SF	1,392 SF
5D	1,293 SF	207 SF	1,500 SF

1 FIFTH FLOOR PLAN

SCALE: 3/32" = 1'-0"





ZILER
ARCHITECTS
A PROFESSIONAL
ARCHITECTURAL
CORPORATION

JAMES O. ZILER, ARCHITECT
SEAN R. PRIMEAUX, ARCHITECT

101 Calco Boulevard
Lafayette, Louisiana 70503
Ph: 337-269-6326

10610 Florida Boulevard
Walker, Louisiana 70785
Ph: 225-424-6990
www.zilerarchitects.net

DOCUMENTS PREPARED BY ZILER ARCHITECTS ARE INSTRUMENTS OF THE ARCHITECT'S SERVICE FOR USE SOLELY WITH RESPECT TO THIS PROJECT. THE ARCHITECT SHALL RETAIN ALL COMMON LAW, STATUTORY AND OTHER RESERVED RIGHTS, INCLUDING THE COPYRIGHT. THEY ARE NOT TO BE USED BY THE CONTRACTOR OR ANY SUBCONTRACTOR, MATERIAL OR EQUIPMENT SUPPLIERS, OR ANYONE FOR OTHER PROJECTS OR FOR ADDITIONS TO THIS PROJECT OUTSIDE THE SCOPE OF THE WORK WITHOUT THE SPECIFIC WRITTEN CONSENT OF ZILER ARCHITECTS.

RENOVATIONS FOR:
LAHAYE CENTER
201 RUE IBERVILLE
LAFAYETTE, LOUISIANA 70508

NOT FOR
CONSTRUCTION

DATE ISSUED
10/28/25
REVISED
-

PLOT DATE
10/28/25 4:00:54 PM
DRAWN BY
GMB
CHECKED BY
SRP
PROJECT NO.
2506
SHEET NO.
AC5.1a
OF 1