

SUMMARY

AERIAL

RETAIL MAP

SITE PLAN

DEMOGRAPHICS

FOR LEASE

TOTAL GLA

- 110,000 SF

AVAILABILITY RANGE

- 2,000 - 49,400 SF

AVAILABLE

- 15,000 - 32,000 SF - Existing Resurrection Life Church (Available June 2025)
- 12,000 SF - Existing Resurrection Life Church (Available June 2025)
- 5,400 SF - Existing Resurrection Life Church (Available June 2025)
- 3,600 SF - Former E-Smoke & Vapors
- 2,442 SF - Church Storage (Available June 2025)
- 2,000 SF - Former Fisher Cabinets

TENANTS INCLUDE

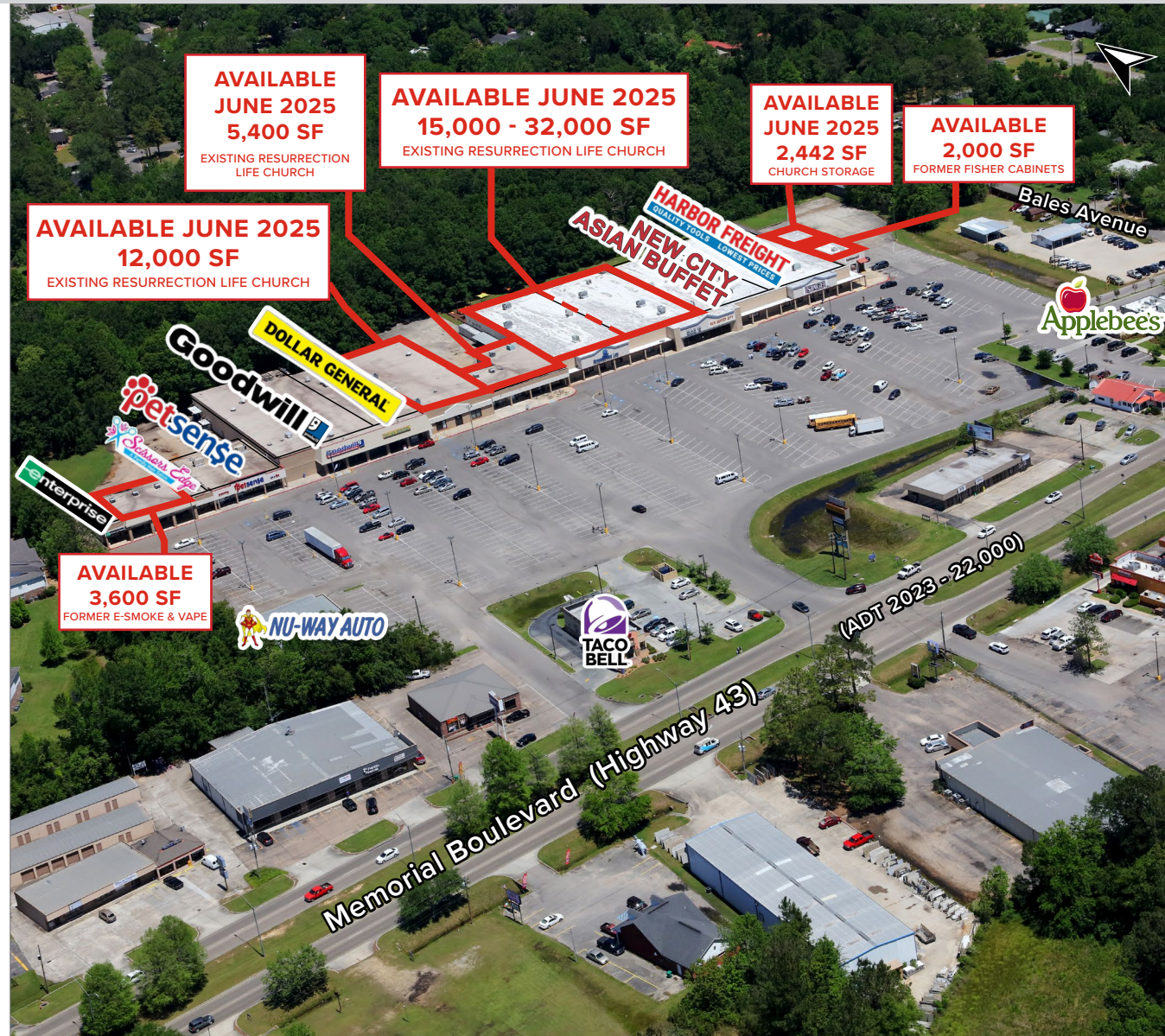
- Harbor Freight Tools
- Dollar General
- PetSense
- Applebee's
- Goodwill
- Nu-Way Auto Sales
- Taco Bell
- New City Asian Buffet
- Enterprise Rent-A-Car
- Scissors Edge Hair Salon

AREA RETAIL

Walmart Supercenter, The Home Depot, Planet Fitness, Dirt Cheap, AutoZone, O'Reilly Auto Parts, and many more!

PROPERTY DESCRIPTION

Located on Memorial Boulevard which serves as the retail corridor of Pearl River County, this property is well positioned to serve the market area. This area serves all of Pearl River County, as well as portions of Hancock County, St. Tammany



SUMMARY

AERIAL

RETAIL MAP

SITE PLAN

DEMOGRAPHICS



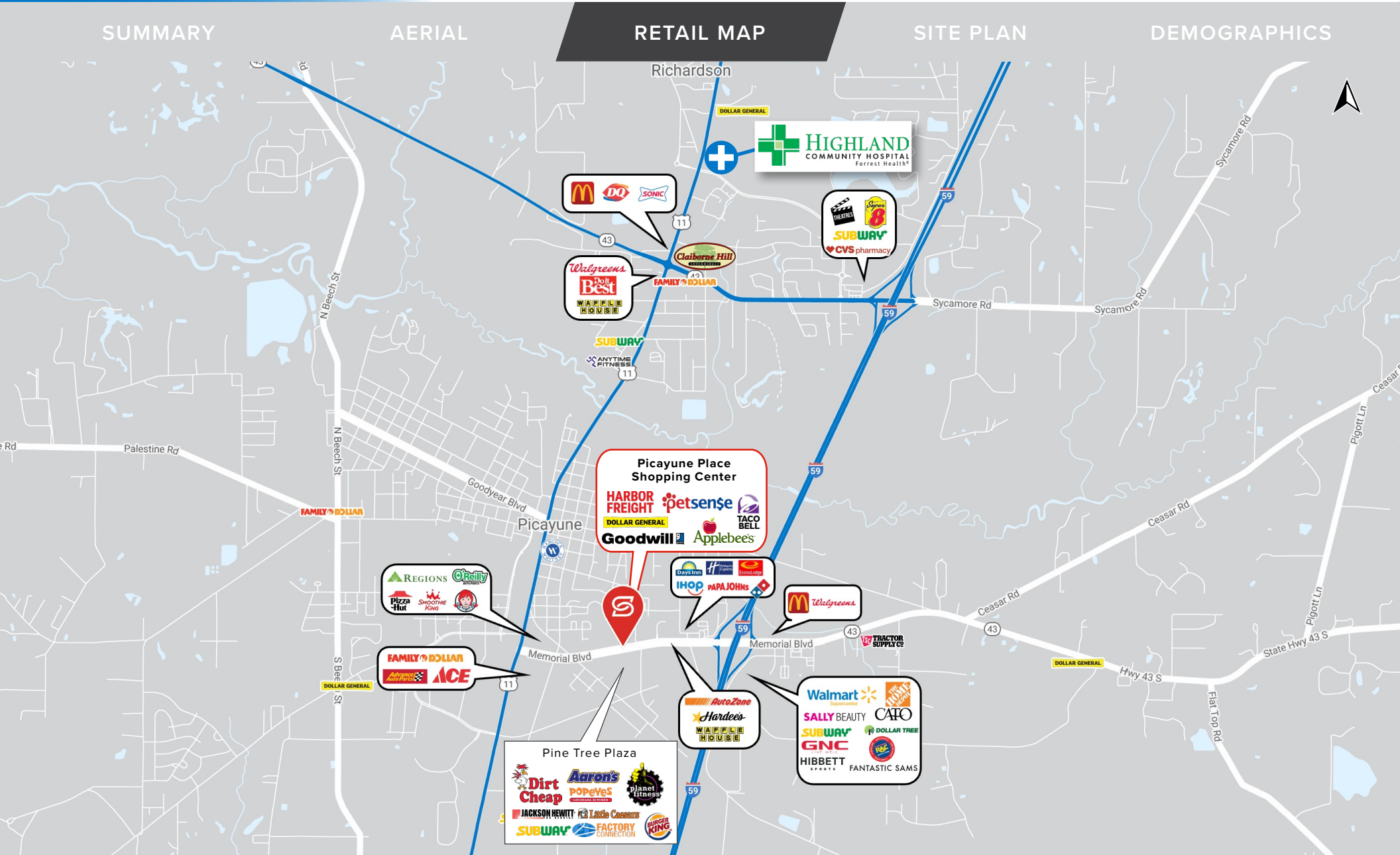
SUMMARY

AERIAL

RETAIL MAP

SITE PLAN

DEMOGRAPHICS



SUMMARY

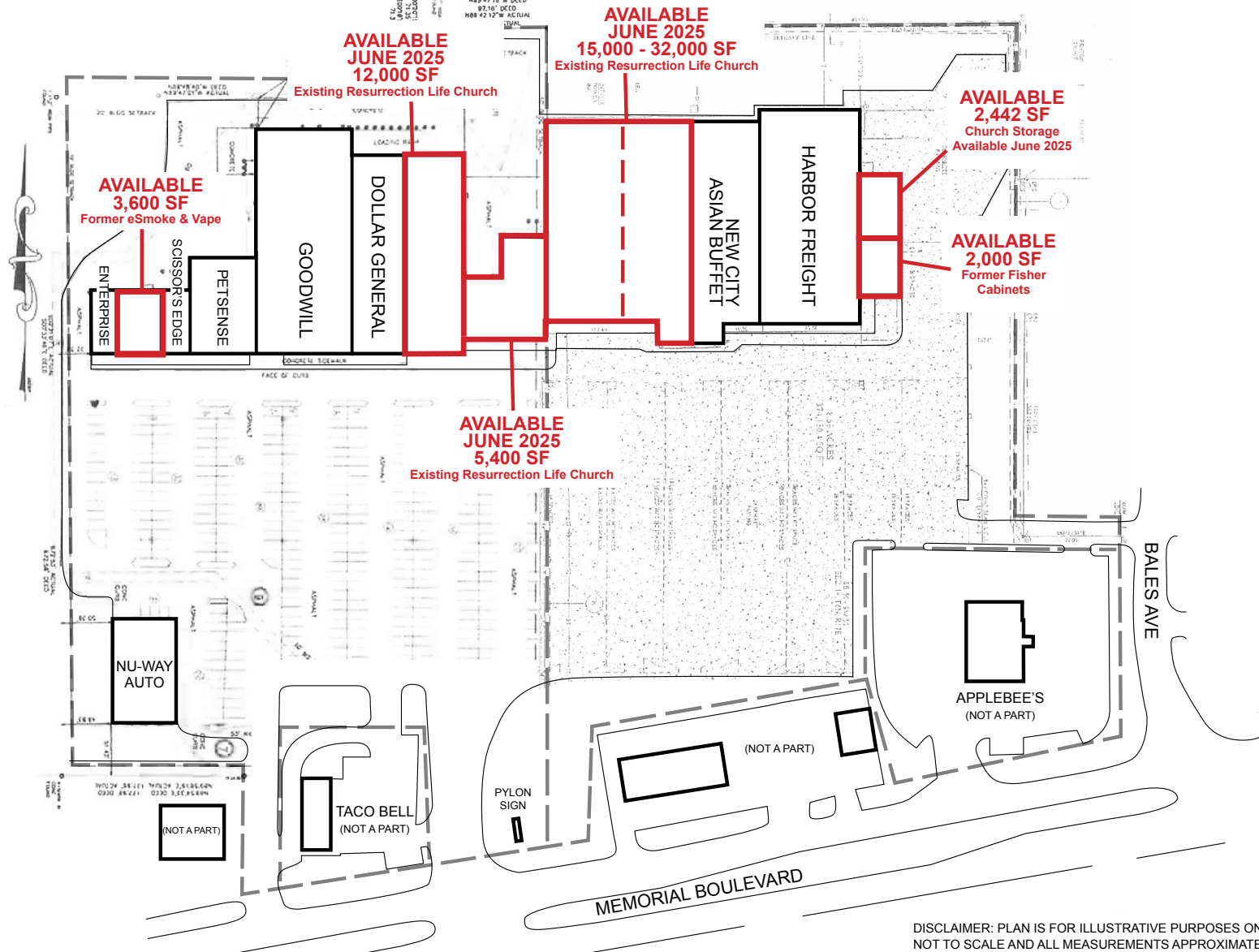
AERIAL

RETAIL MAP

SITE PLAN

DEMOGRAPHICS

Click image
for larger view



DISCLAIMER: PLAN IS FOR ILLUSTRATIVE PURPOSES ONLY.
NOT TO SCALE AND ALL MEASUREMENTS APPROXIMATE.

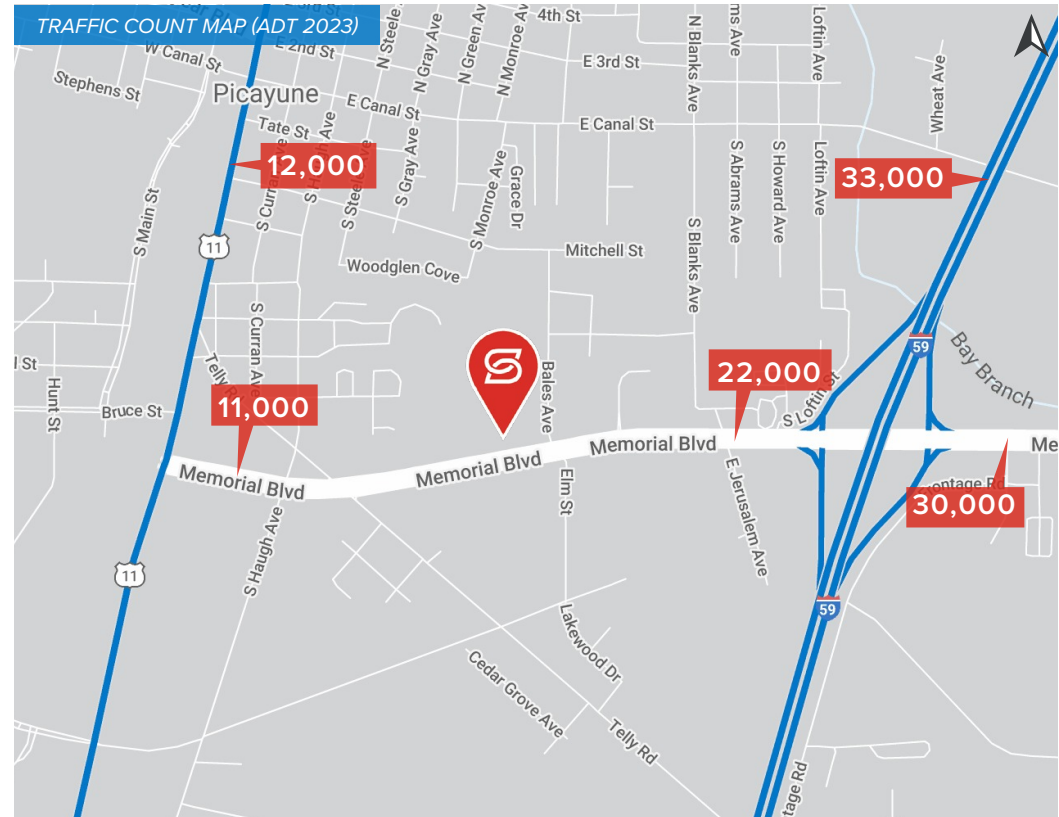
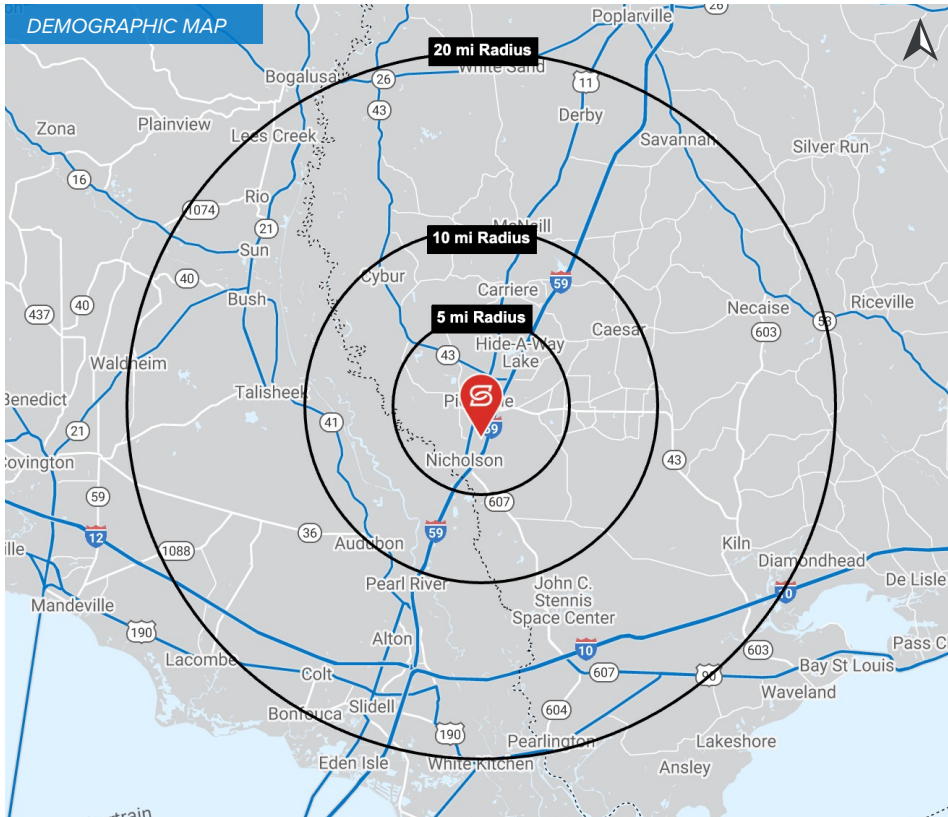
SUMMARY

AERIAL

RETAIL MAP

SITE PLAN

DEMOGRAPHICS



2024 DEMOGRAPHICS

5 MILE

10 MILE

20 MILE



22,453

43,602

170,313

5 MILE

10 MILE

20 MILE



\$69,452

\$78,044

\$87,496

5 MILE

10 MILE

20 MILE



9,234

17,369

67,039