

SUMMARY

SITE PLAN

AERIAL

PICAYUNE RETAIL MAP

DEMOGRAPHICS

FOR LEASE

TOTAL GLA

- 110,000 SF

AVAILABILITY RANGE

- 2,000 - 49,400 SF

AVAILABLE

- 15,000 - 32,000 SF - Former Grand Furniture
- 12,000 SF - Former Church
- 5,400 SF - Former Church Shop
- 2,442 - 4,442 SF - Former Cabinet Store / Church Storage

TENANTS INCLUDE

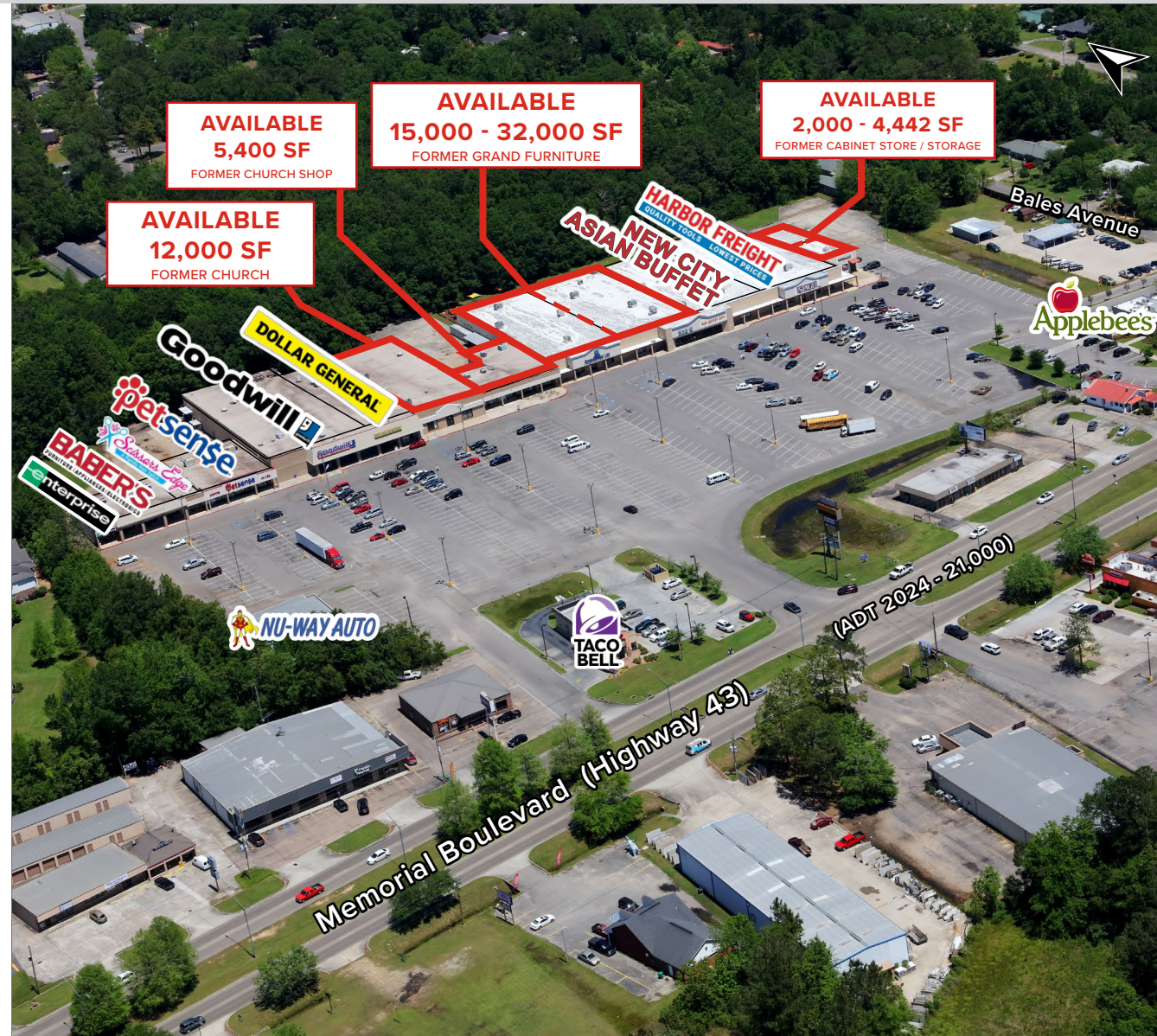
- Harbor Freight Tools
- Dollar General
- PetSense
- Applebee's
- Goodwill
- Nu-Way Auto Sales
- Baber's
- Taco Bell
- New City Asian Buffet
- Enterprise Rent-A-Car
- Scissors Edge Hair Salon

AREA RETAIL

Walmart Supercenter, The Home Depot, Planet Fitness, Dirt Cheap, AutoZone, O'Reilly Auto Parts, and many more!

PROPERTY DESCRIPTION

Located on Memorial Boulevard which serves as the retail corridor of Pearl River County, this property is well positioned to serve the market area. This area serves all of Pearl River County, as well as portions of Hancock County, St. Tammany Parish and Washington Parish. Picayune Place Shopping Center offers co-tenancy of soft goods and service tenants, and has maintained a stable tenant base through the years.



SUMMARY

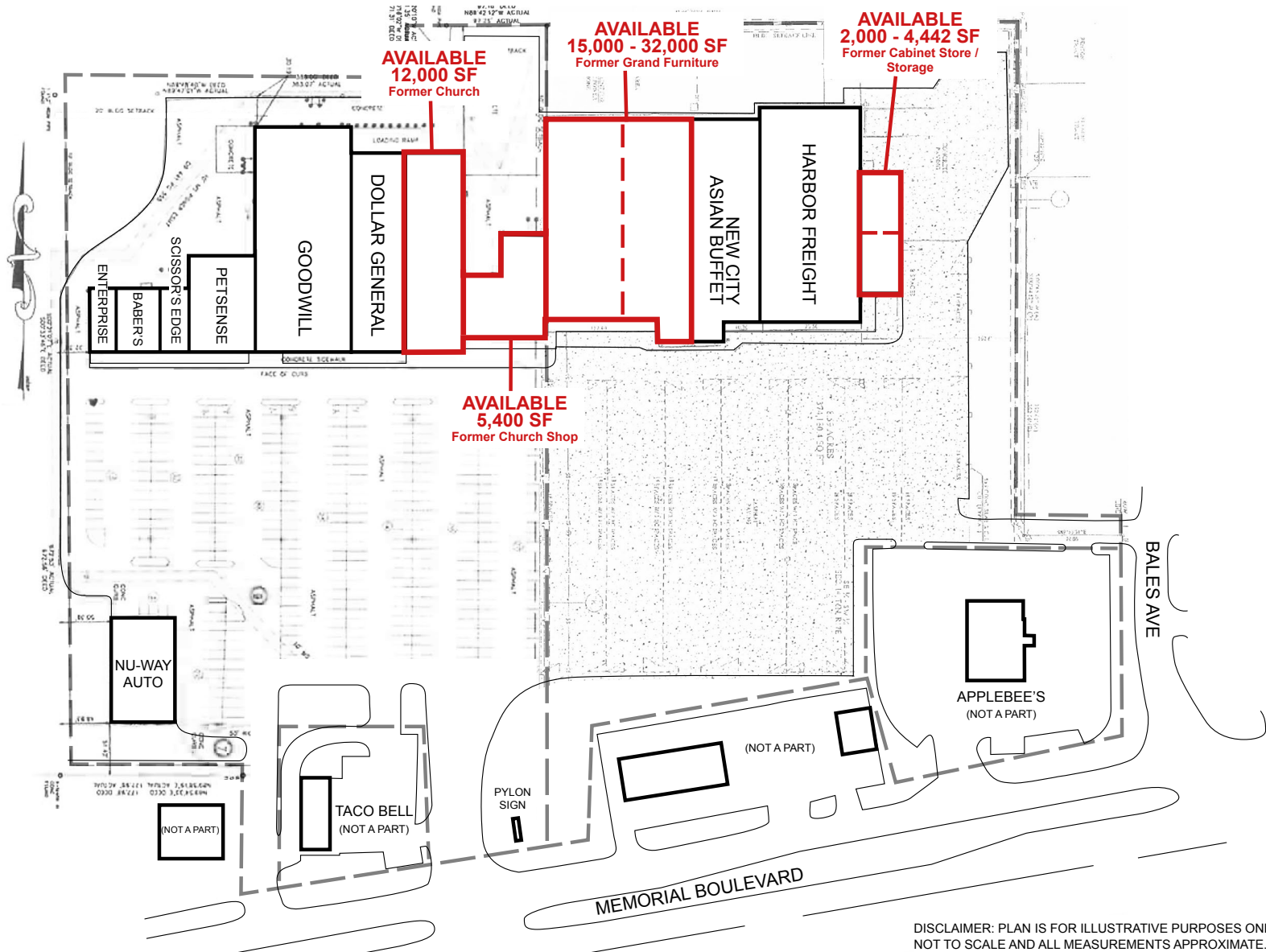
SITE PLAN

AERIAL

PICAYUNE
 RETAIL MAP

DEMOGRAPHICS

Click image for
 larger view



DISCLAIMER: PLAN IS FOR ILLUSTRATIVE PURPOSES ONLY.
 NOT TO SCALE AND ALL MEASUREMENTS APPROXIMATE.

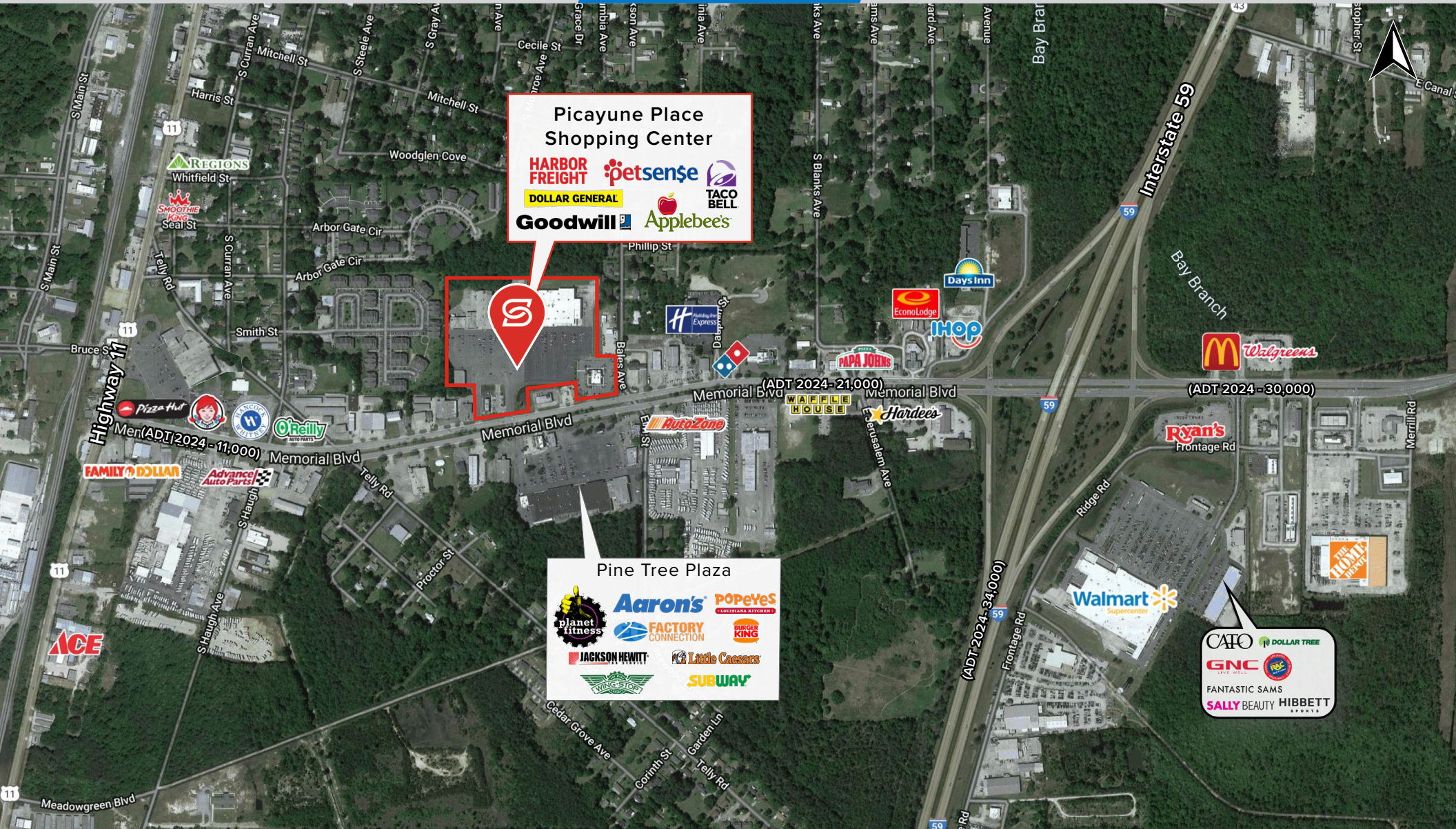
SUMMARY

SITE PLAN

AERIAL

PICAYUNE RETAIL MAP

DEMOGRAPHICS



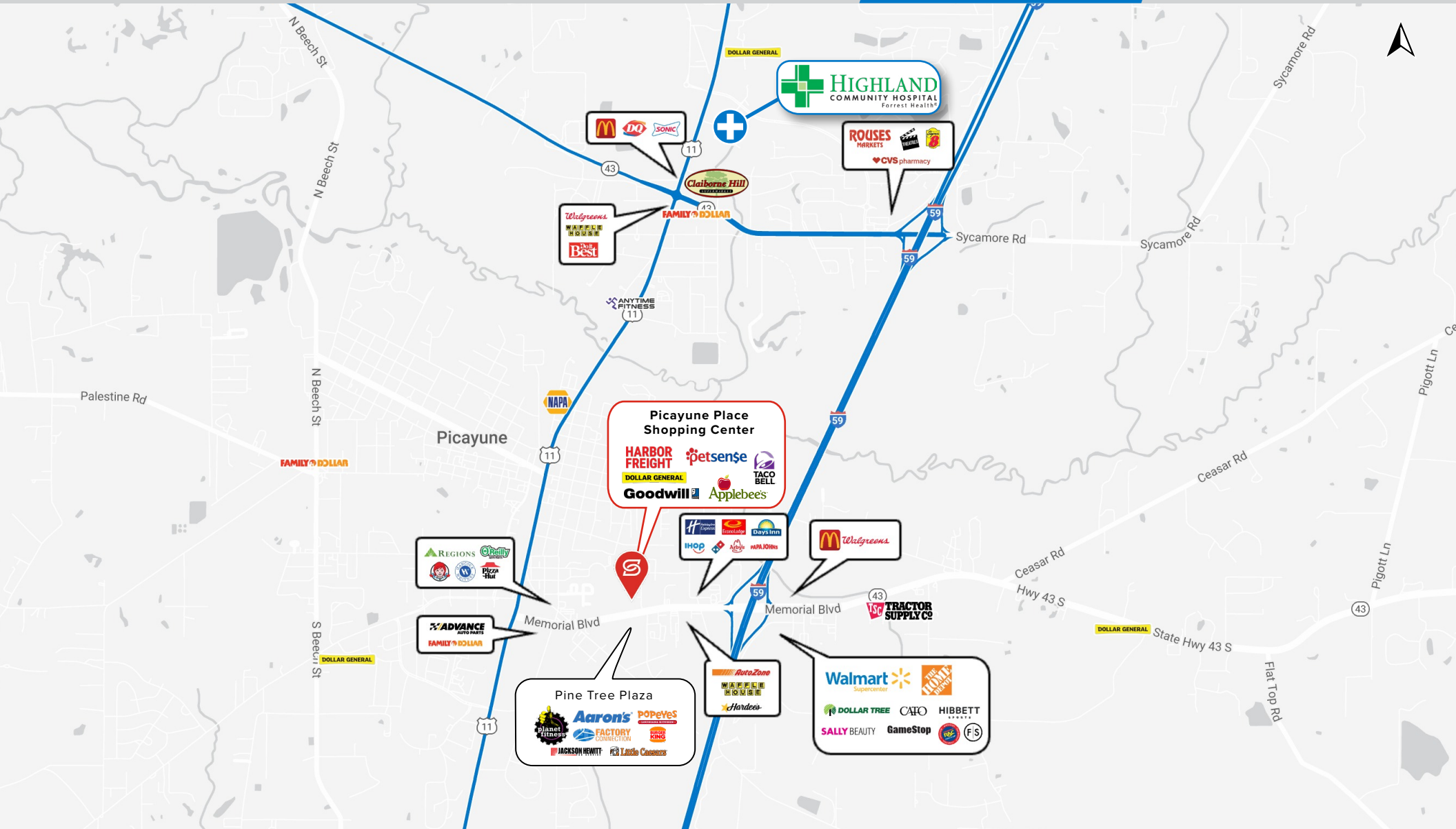
SUMMARY

SITE PLAN

AERIAL

PICAYUNE RETAIL MAP

DEMOGRAPHICS



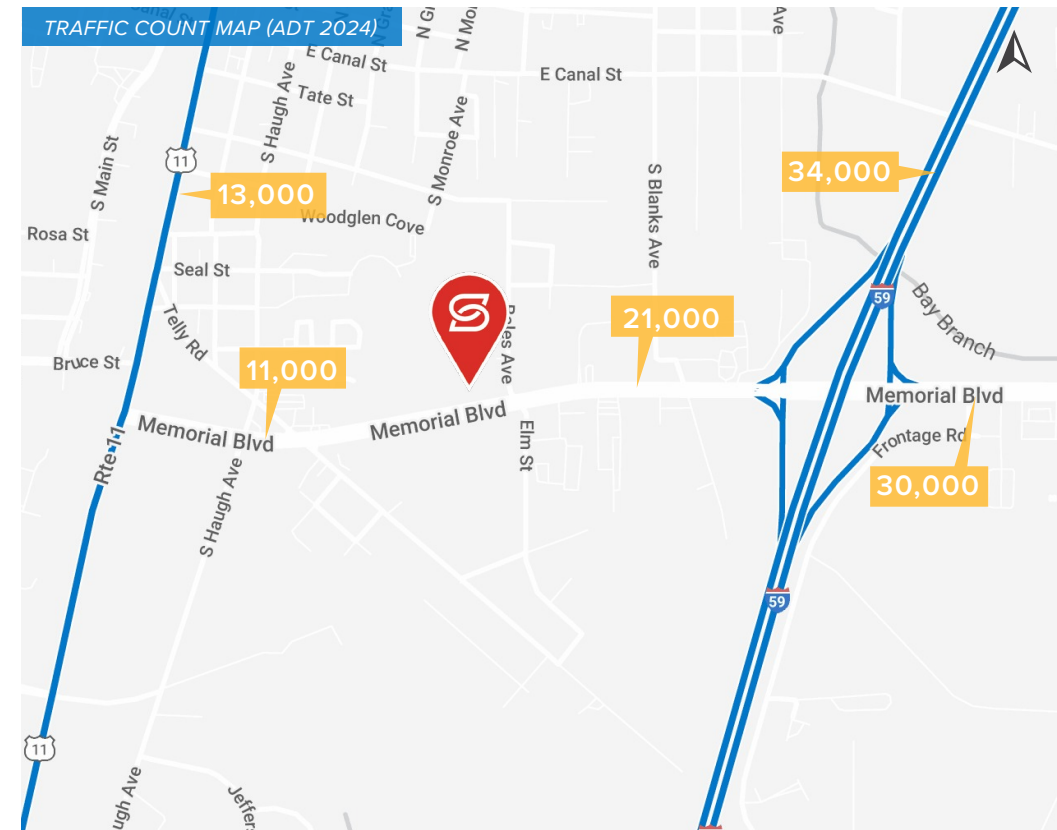
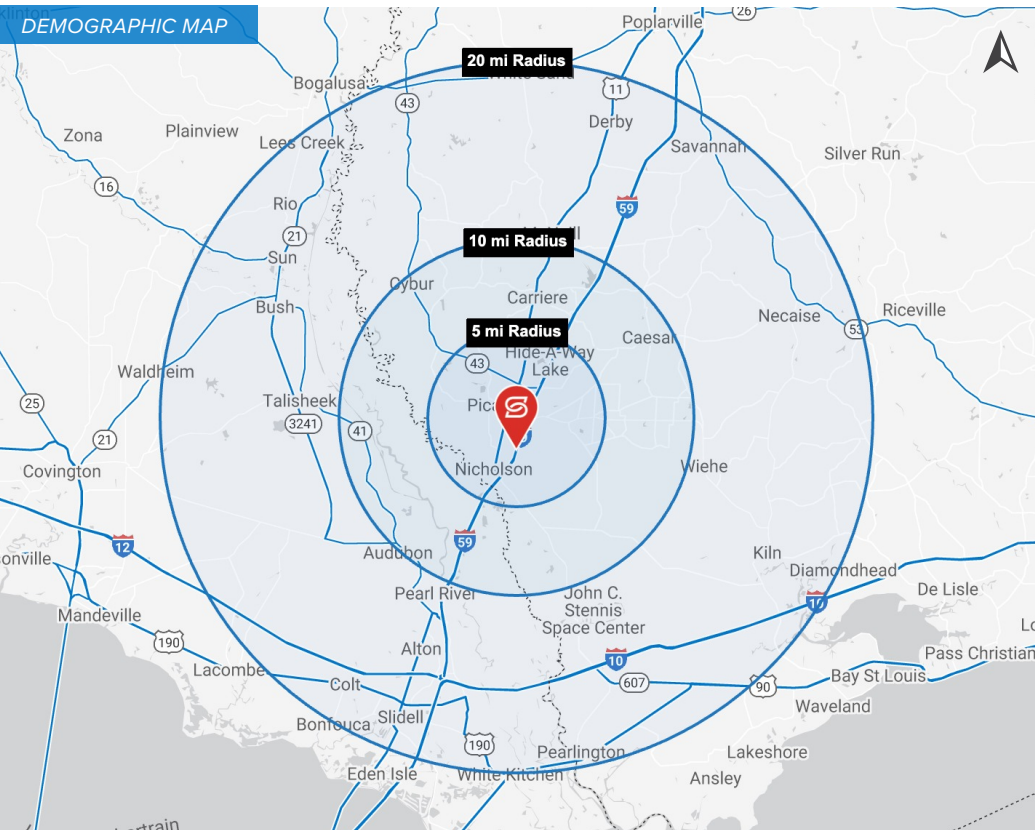
SUMMARY

SITE PLAN

AERIAL

PICAYUNE RETAIL MAP

DEMOGRAPHICS



2025 DEMOGRAPHICS

