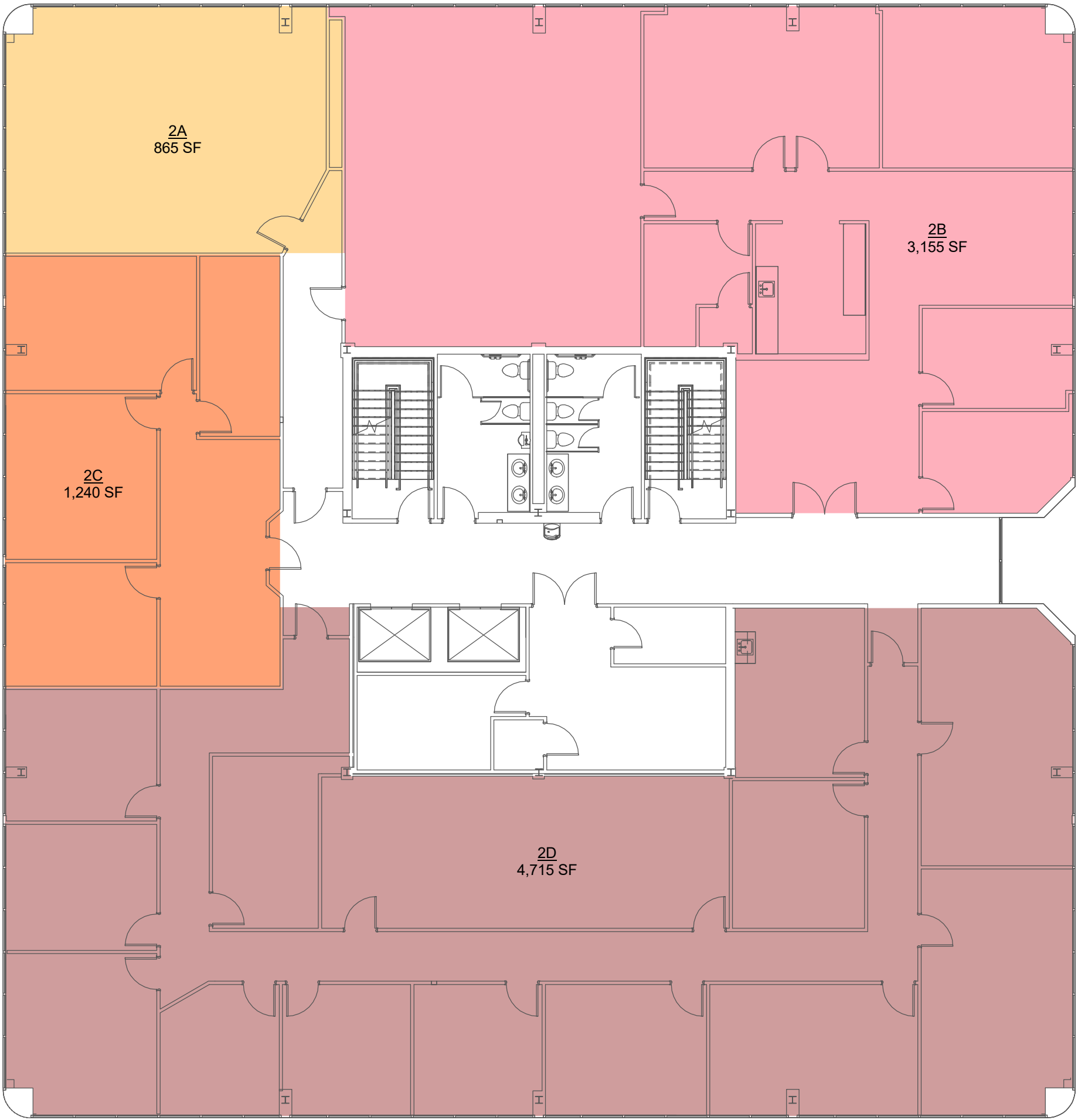


NAME	USABLE	COMMON (16%)	RENTABLE SF
Suite 212 (2A)	745 SF	119 SF	865 SF
2B	2,720 SF	435 SF	3,155 SF
Suite 210 (2C)	1,069 SF	171 SF	1,240 SF
2D	4,064 SF	650 SF	4,715 SF



**1 SECOND FLOOR PLAN**  
SCALE: 3/32" = 1'-0"

**ZILER**  
ARCHITECTS  
A PROFESSIONAL  
ARCHITECTURAL  
CORPORATION  
JAMES O. ZILER, ARCHITECT  
SEAN R. PRIMEAUX, ARCHITECT  
101 Calco Boulevard  
Lafayette, Louisiana 70503  
Ph: 337-269-6326  
10610 Florida Boulevard  
Walker, Louisiana 70785  
Ph: 225-424-6990  
www.zilerarchitects.net

DOCUMENTS PREPARED BY ZILER ARCHITECTS ARE INSTRUMENTS OF THE ARCHITECT'S SERVICE FOR USE SOLELY WITH RESPECT TO THIS PROJECT. THE ARCHITECT SHALL RETAIN ALL COMMON LAW, STATUTORY AND OTHER RESERVED RIGHTS, INCLUDING THE COPYRIGHT. THEY ARE NOT TO BE USED BY THE CONTRACTOR OR ANY SUBCONTRACTOR, MATERIAL OR EQUIPMENT SUPPLIERS OR ANYONE FOR OTHER PROJECTS OR FOR ADDITIONS TO THIS PROJECT OUTSIDE THE SCOPE OF THE WORK WITHOUT THE SPECIFIC WRITTEN CONSENT OF ZILER ARCHITECTS.

RENOVATIONS FOR:  
**LAHAYE CENTER**  
201 RUE IBERVILLE  
LAFAYETTE, LOUISIANA 70508

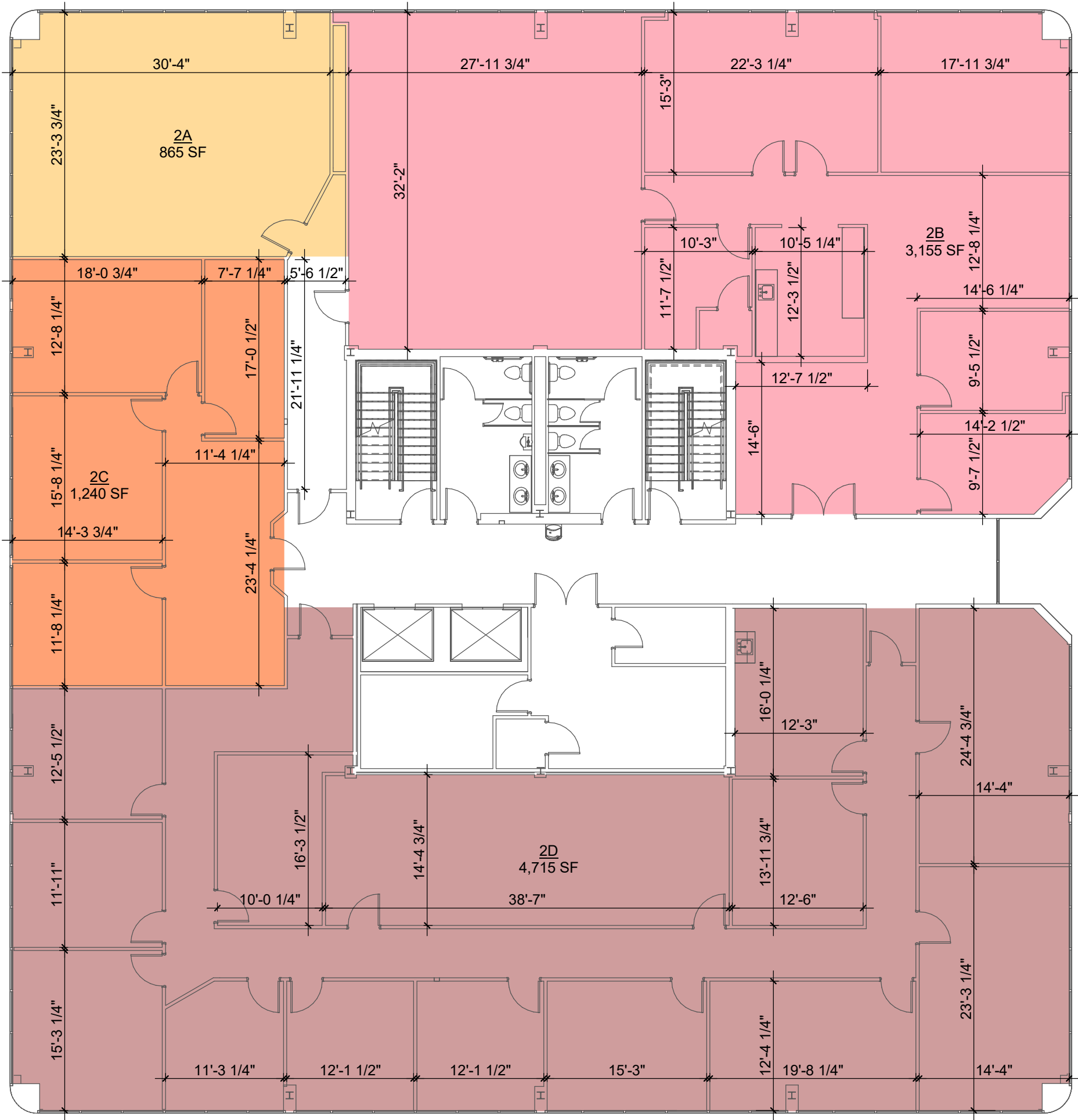
NOT FOR  
CONSTRUCTION

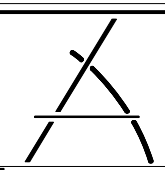
DATE ISSUED	09/29/25
REVISED	-
PLOT DATE	09/29/25 9:18:30 AM
DRAWN BY	GMB
CHECKED BY	SRP
PROJECT NO.	2506
SHEET NO.	AC02.1
	OF 16

NAME	USABLE	COMMON (16%)	RENTABLE SF
2A	745 SF	119 SF	865 SF
2B	2,720 SF	435 SF	3,155 SF
2C	1,069 SF	171 SF	1,240 SF
2D	4,064 SF	650 SF	4,715 SF

1 SECOND FLOOR PLAN

SCALE: 3/32" = 1'-0"





**ZILER**  
ARCHITECTS  
A PROFESSIONAL  
ARCHITECTURAL  
CORPORATION

JAMES O. ZILER, ARCHITECT  
SEAN R. PRIMEAUX, ARCHITECT

101 Calco Boulevard  
Lafayette, Louisiana 70503  
Ph: 337-269-6326

10610 Florida Boulevard  
Walker, Louisiana 70785  
Ph: 225-424-6990  
[www.zilerarchitects.net](http://www.zilerarchitects.net)

DOCUMENTS PREPARED BY ZILER ARCHITECTS ARE INSTRUMENTS OF THE ARCHITECT'S SERVICE FOR USE SOLELY WITH RESPECT TO THIS PROJECT. THE ARCHITECT SHALL RETAIN ALL COMMON LAW, STATUTORY AND OTHER RESERVED RIGHTS, INCLUDING THE COPYRIGHT. THEY ARE NOT TO BE USED BY THE CONTRACTOR OR ANY SUBCONTRACTOR, MATERIAL OR EQUIPMENT SUPPLIERS OR ANYONE FOR OTHER PROJECTS OR FOR ADDITIONS TO THIS PROJECT OUTSIDE THE SCOPE OF THE WORK WITHOUT THE SPECIFIC WRITTEN CONSENT OF ZILER ARCHITECTS.

RENOVATIONS FOR:

LAHAYE CENTER

201 RUE IBERVILLE  
LAFAYETTE, LOUISIANA 70508

NOT FOR  
CONSTRUCTION

DATE ISSUED	09/29/25
REVISED	-
PLOT DATE	09/29/25 9:18:34 AM
DRAWN BY	GMB
CHECKED BY	SRP
PROJECT NO.	2506
SHEET NO.	AC02.2
OF	16