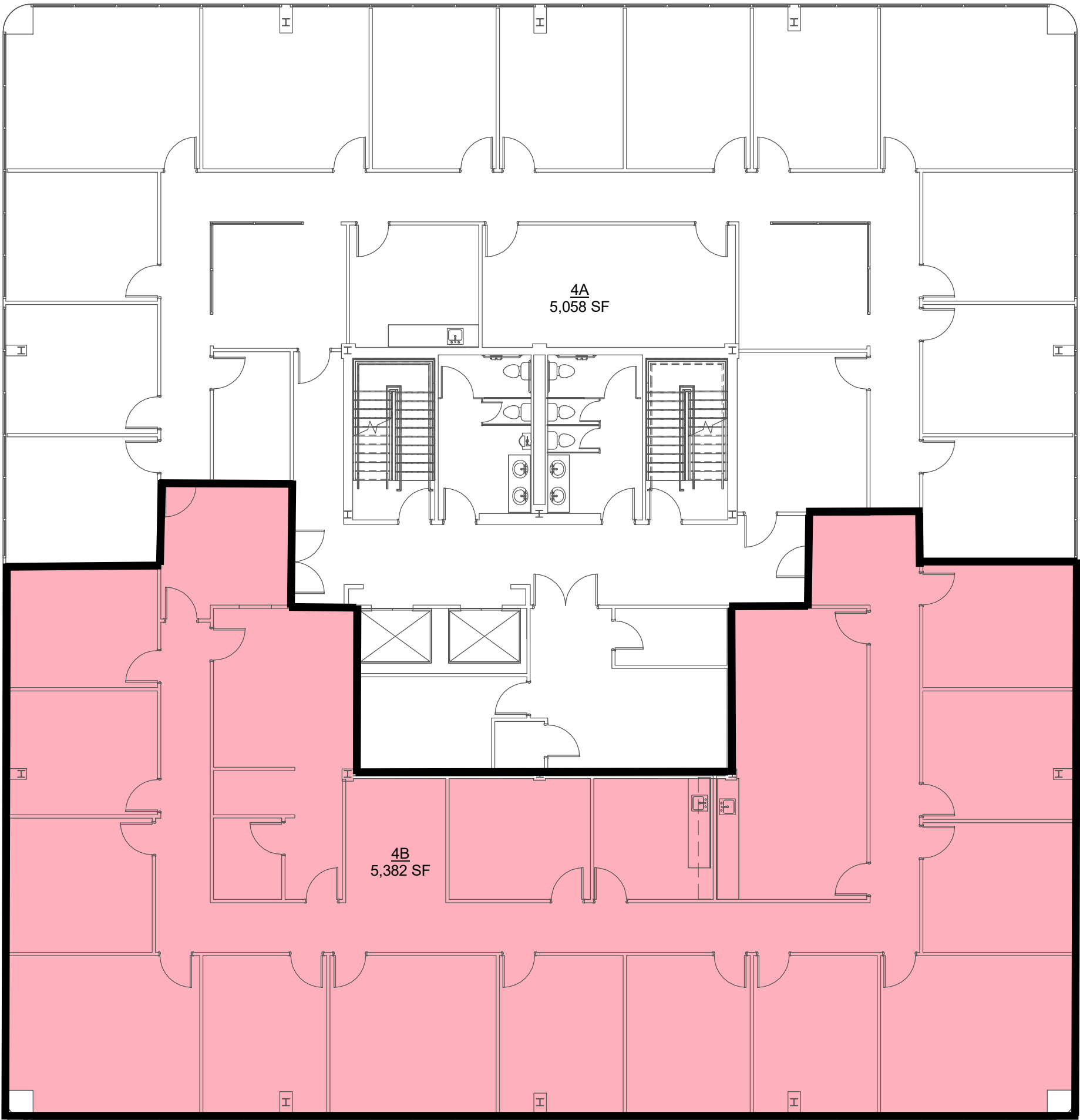


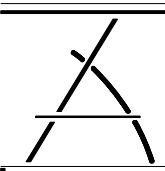
NAME	USABLE	COMMON (16%)	RENTABLE SF
4A	4,360 SF	698 SF	5,058 SF
Suite 400A (4B)	4,639 SF	742 SF	5,382 SF

1

FOURTH FLOOR PLAN

SCALE: 3/32" = 1'-0"





ZILER
ARCHITECTS
A PROFESSIONAL
ARCHITECTURAL
CORPORATION

JAMES O. ZILER, ARCHITECT
SEAN R. PRIMEAUX, ARCHITECT

101 Calco Boulevard
Lafayette, Louisiana 70503
Ph: 337-269-6326

10610 Florida Boulevard
Walker, Louisiana 70785
Ph: 225-424-6990
www.zilerarchitects.net

DOCUMENTS PREPARED BY ZILER ARCHITECTS ARE INSTRUMENTS OF THE ARCHITECT'S SERVICE FOR USE SOLELY WITH RESPECT TO THIS PROJECT. THE ARCHITECT SHALL RETAIN ALL COMMON LAW, STATUTORY AND OTHER RESERVED RIGHTS, INCLUDING THE COPYRIGHT. THEY ARE NOT TO BE USED BY THE CONTRACTOR OR ANY SUBCONTRACTOR, MATERIAL OR EQUIPMENT SUPPLIERS OR ANYONE FOR OTHER PROJECTS OR FOR ADDITIONS TO THIS PROJECT OUTSIDE THE SCOPE OF THE WORK WITHOUT THE SPECIFIC WRITTEN CONSENT OF ZILER ARCHITECTS.

RENOVATIONS FOR:

LAHAYE CENTER

201 RUE IBERVILLE
LAFAYETTE, LOUISIANA 70508

NOT FOR
CONSTRUCTION

DATE ISSUED	09/29/25
REVISED	-
PLOT DATE	09/29/25 9:18:42 AM
DRAWN BY	GMB
CHECKED BY	SRP
PROJECT NO.	2506
SHEET NO.	AC04.1
	OF 16