



Campus Federal Mortgage & Business Center

6108 Siegen Lane , Baton Rouge, Louisiana 70809

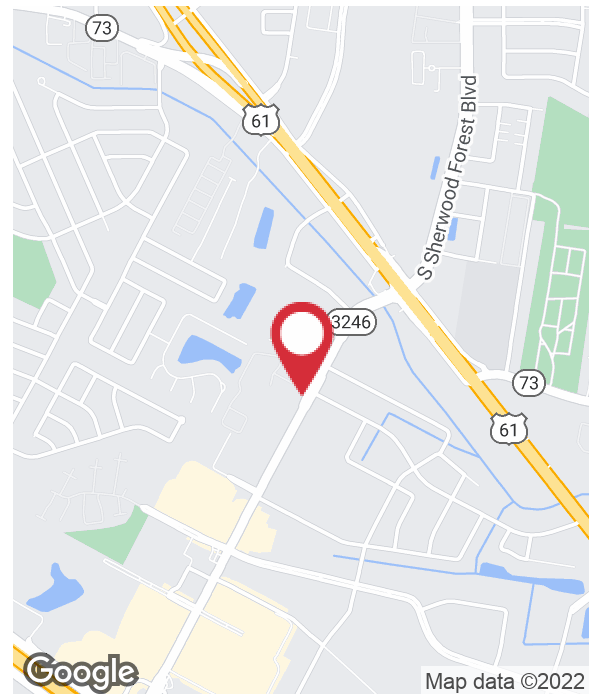
Property Highlights

- Available to View December/January 2023
- Very Desirable Class A Professional Office Suites
- Lease all, Combine or Individual Suites / 4,660 Total SF
- New Construction / Suites Have Sheetrock Installed
- Partition with Cubicles or Factory Wall Installation
- Permanent Buildout Available with Longer-Term Lease
- Conveniently Located between I-10 Siegen and I-12 Sherwood and close to Airline Highway
- Private Road Entrance and Exit onto Siegen Lane
- Traffic Light onto Siegen Lane
- Across Private Road from "Rooms To Go" Furniture Store
- Parking Close to Suite Entrances
- The Comfort of Knowing You'll Have Landlord Stability

Lease Rate

\$27.00 SF/yr (Full Service)

CALL OR EMAIL FOR MORE INFORMATION



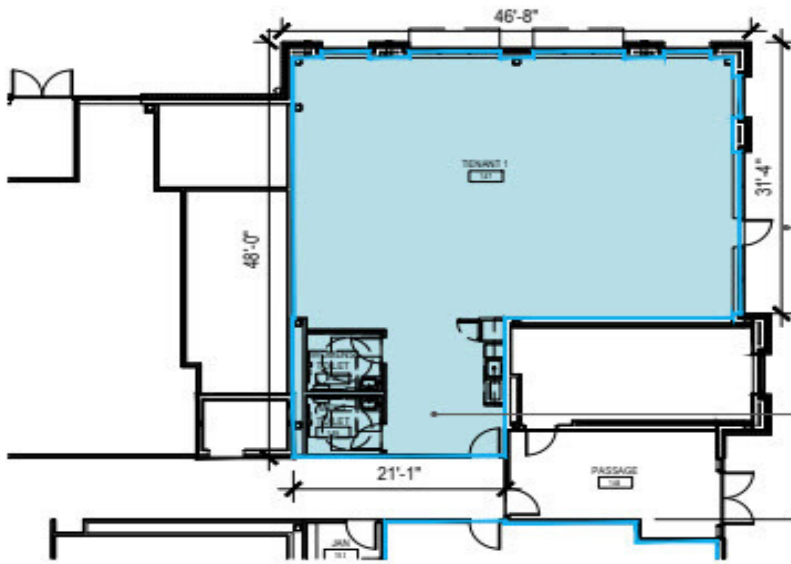
For more information

Richard Daviet

C: 225 278 6161
rdaviet@latterblum.com

Ricky Hill, CCIM

C: 225 588 6001
rhill@latterblum.com

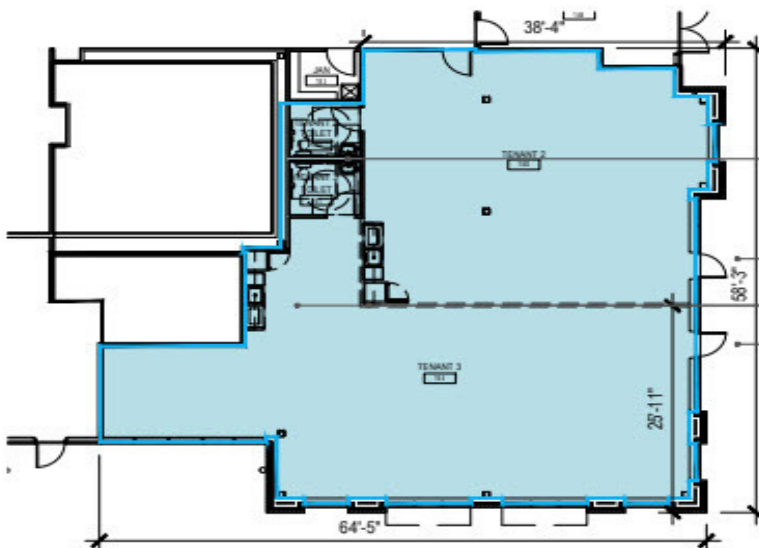


SUITE 147

1,794.04 RENTABLE SQUARE FEET (RSF)

EXTERIOR SUITE ENTRY

SUGGESTED SINGLE OCCUPANT RESTROOMS AND BREAK ROOM LOCATION



SUITE 150 & 154

2,866.69 RENTABLE SQUARE FEET (RSF), DIVISIBLE TO 1,252.34 RSF (150) AND 1,614.34 RSF (154)

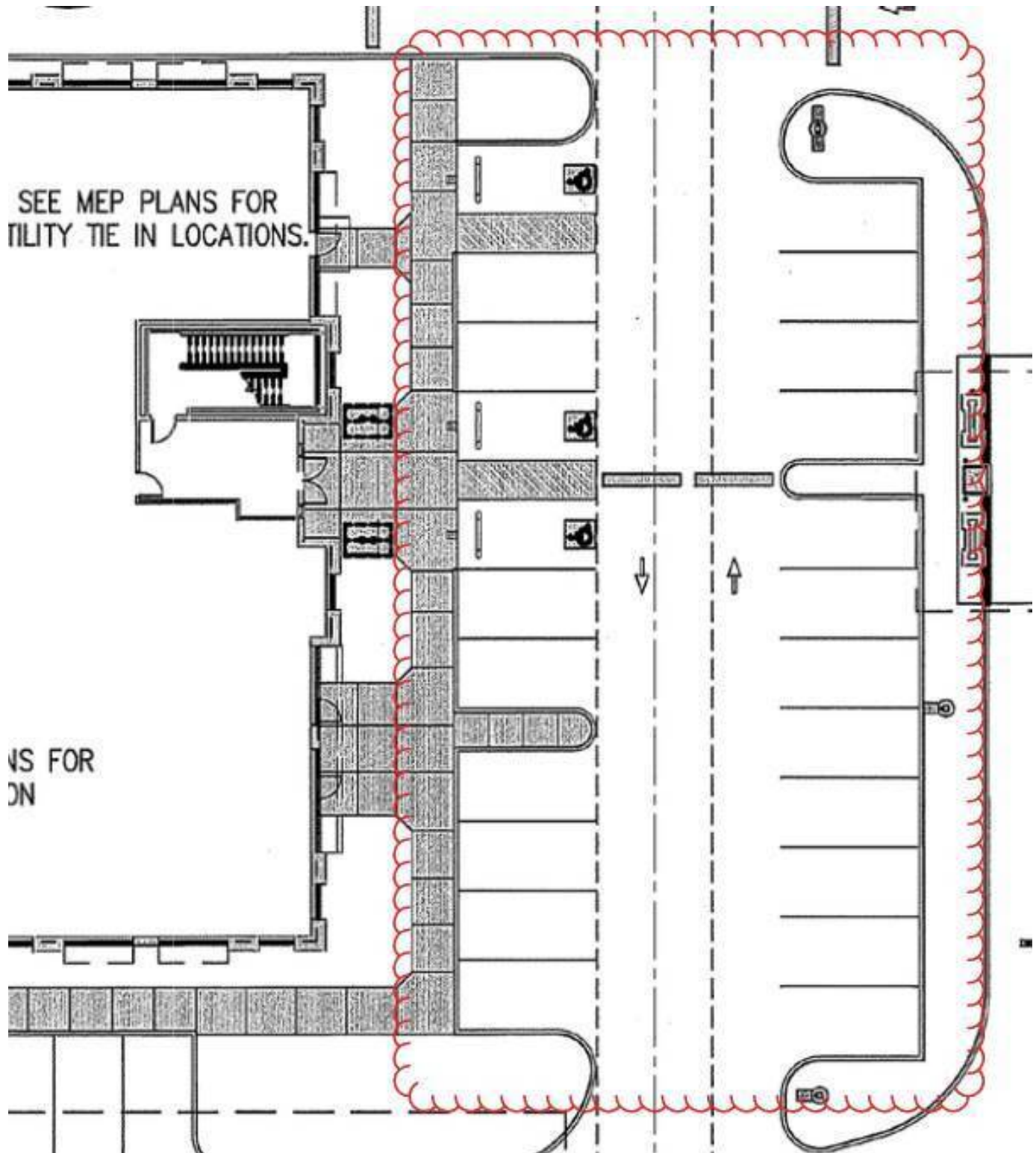
SUGGESTED SINGLE OCCUPANT RESTROOMS LOCATION

EXTERIOR SUITE ENTRY

SUGGESTED BREAK ROOM LOCATIONS

EXTERIOR SUITE ENTRY

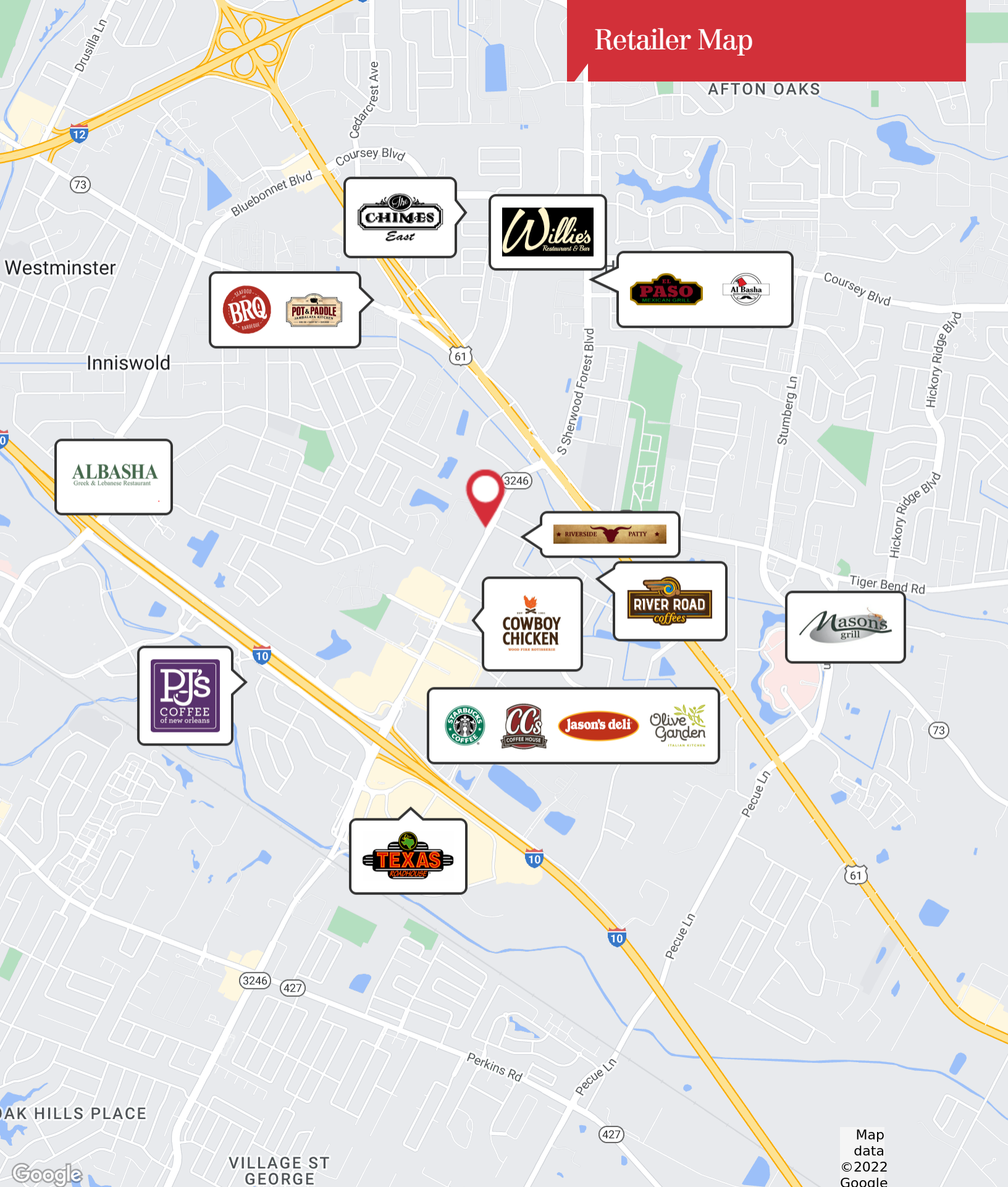




Under Construction



Retailer Map



Map
data
©2022
Google

Location Maps

