



**SAURAGE ROTENBERG™**  
COMMERCIAL REAL ESTATE

**FOR SALE**  
**OFFICE/WAREHOUSE, HEART OF BR HEALTH DISTRICT**

8377 PICARDY AVENUE, BATON ROUGE, LA 70809

**12,513 SF**

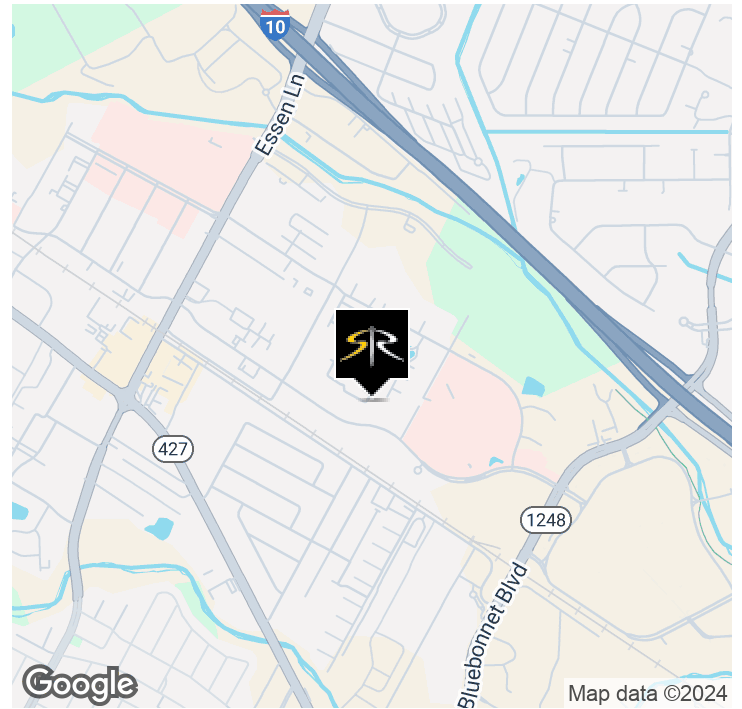


**OFFERING SUMMARY**

<b>Building Sale Price:</b>	<b>\$1,450,000</b>
<b>Building Size:</b>	<b>12,513 SF</b>
<b>Adjacent Vacant Lot Price (0.894 Acres):</b>	<b>\$525,000</b>
<b>Zoning:</b>	<b>M-1</b>

**PROPERTY HIGHLIGHTS**

- Large Office / Warehouse with Covered Canopy located in the heart of the Baton Rouge Health District Available for Sale
- Surrounded by OLOL, Baton Rouge General, Ochsner, Mary Bird Perkins Cancer Center, OLOL Children's Hospital
- New Enhanced Access from new Bluebonnet Blvd - OLOL Children's Hospital road
- Perfect for Additional Space for Existing Medical Facilities, or for any Medical Related Business, Medical Equipment Sales, Distribution
- Seller will consider Owner Financing
- Seller will consider splitting cost of Access Road from Picardy to Bldg.
- Seller will consider Leasing for \$11.50/sf (NNN) to a Suitable Tenant



**MIKE STINSON, CCIM**  
Commercial Sales & Leasing  
(D)225.907.7793  
mike@sr-cre.com

**SAURAGE ROTENBERG COMMERCIAL REAL ESTATE, LLC**  
5135 Bluebonnet Boulevard  
Baton Rouge, LA 70809  
225.766.0000 | sauragerotenberg.com

The information contained herein has either been given to us by property owners or is from sources deemed reliable and is believed to be correct, it is not in any way warranted or guaranteed by Saurage Rotenberg Commercial Real Estate. This information is submitted subject to errors, omissions, changes in price, rental or other conditions, withdrawal without notice, and to any special listing conditions imposed by the principals. Licensed in Louisiana & Mississippi.



**SAURAGE ROTENBERG™**  
COMMERCIAL REAL ESTATE

# OFFICE/WAREHOUSE, HEART OF BR HEALTH DISTRICT

8377 PICARDY AVENUE, BATON ROUGE, LA 70809

FOR SALE

12,513 SF



## COMPLETE PROPERTY HIGHLIGHTS

- **Large Office/Warehouse with Covered Canopy located in the heart of the Baton Rouge Health District Available for Sale**
- Surrounded by OLOL, Baton Rouge General, Ochsner, Mary Bird Perkins Cancer Center, OLOL Children's Hospital
- New Enhanced Access from new Bluebonnet Blvd - OLOL Children's Hospital Rd.
- Perfect for Additional Space for existing Medical Facilities, or for any Medical Related Business, Medical Equipment Sales, and Distribution
- **\*\*Seller will consider splitting cost of a Drive/ Access road from Picardy to Building**
- **12,513 SF Total Space:**
  - 8,633 SF Office/Warehouse
  - 3,880 SF Canopy Space
- Renovated in 2015, including HVAC
- Fully Insulated Warehouse
- Secure Fenced in Yard
- Large Reception Area
- Large Kitchen/ Break Area
- Large Lockable Storage Cage for Equipment, Instruments 36 Parking Spaces
- Zoned M-1, Light Industrial
- **\*\*Adjacent Lot (0.894 Acres) with 385' Picardy Ave. Frontage also available For Sale (\$525,000)**
- Lot Measures:
  - 175' Depth @ West Boundary
  - 60' Depth @ East Boundary
- **Contact Agent for more information**

**MIKE STINSON, CCIM**  
Commercial Sales & Leasing  
(D)225.907.7793  
mike@sr-cre.com

**SAURAGE ROTENBERG COMMERCIAL REAL ESTATE, LLC**  
5135 Bluebonnet Boulevard  
Baton Rouge, LA 70809  
225.766.0000 | sauragerotenberg.com

The information contained herein has either been given to us by property owners or is from sources deemed reliable and is believed to be correct, it is not in any way warranted or guaranteed by Saurage Rotenberg Commercial Real Estate. This information is submitted subject to errors, omissions, changes in price, rental or other conditions, withdrawal without notice, and to any special listing conditions imposed by the principals. Licensed in Louisiana & Mississippi.



**SAURAGE ROTENBERG™**  
COMMERCIAL REAL ESTATE

# FOR SALE OFFICE/WAREHOUSE, HEART OF BR HEALTH DISTRICT

8377 PICARDY AVENUE, BATON ROUGE, LA 70809

**12,513 SF**



**MIKE STINSON, CCIM**  
Commercial Sales & Leasing  
(D)225.907.7793  
mike@sr-cre.com

**SAURAGE ROTENBERG COMMERCIAL REAL ESTATE, LLC**  
5135 Bluebonnet Boulevard  
Baton Rouge, LA 70809  
225.766.0000 | sauragerotenberg.com

The information contained herein has either been given to us by property owners or is from sources deemed reliable and is believed to be correct, it is not in any way warranted or guaranteed by Saurage Rotenberg Commercial Real Estate. This information is submitted subject to errors, omissions, changes in price, rental or other conditions, withdrawal without notice, and to any special listing conditions imposed by the principals. Licensed in Louisiana & Mississippi.



**SAURAGE ROTENBERG™**  
COMMERCIAL REAL ESTATE

**FOR SALE**  
**OFFICE/WAREHOUSE, HEART OF BR HEALTH DISTRICT**  
8377 PICARDY AVENUE, BATON ROUGE, LA 70809

**12,513 SF**



**MIKE STINSON, CCIM**  
Commercial Sales & Leasing  
(D)225.907.7793  
mike@sr-cre.com

**SAURAGE ROTENBERG COMMERCIAL REAL ESTATE, LLC**  
5135 Bluebonnet Boulevard  
Baton Rouge, LA 70809  
225.766.0000 | sauragerotenberg.com

The information contained herein has either been given to us by property owners or is from sources deemed reliable and is believed to be correct, it is not in any way warranted or guaranteed by Saurage Rotenberg Commercial Real Estate. This information is submitted subject to errors, omissions, changes in price, rental or other conditions, withdrawal without notice, and to any special listing conditions imposed by the principals. Licensed in Louisiana & Mississippi.



**SAURAGE ROTENBERG™**  
COMMERCIAL REAL ESTATE

**FOR SALE**  
**OFFICE/WAREHOUSE, HEART OF BR HEALTH DISTRICT**  
8377 PICARDY AVENUE, BATON ROUGE, LA 70809

**12,513 SF**



**MIKE STINSON, CCIM**  
Commercial Sales & Leasing  
(D)225.907.7793  
mike@sr-cre.com

**SAURAGE ROTENBERG COMMERCIAL REAL ESTATE, LLC**  
5135 Bluebonnet Boulevard  
Baton Rouge, LA 70809  
225.766.0000 | sauragerotenberg.com

The information contained herein has either been given to us by property owners or is from sources deemed reliable and is believed to be correct, it is not in any way warranted or guaranteed by Saurage Rotenberg Commercial Real Estate. This information is submitted subject to errors, omissions, changes in price, rental or other conditions, withdrawal without notice, and to any special listing conditions imposed by the principals. Licensed in Louisiana & Mississippi.



**SAURAGE ROTENBERG™**  
COMMERCIAL REAL ESTATE

# FOR SALE OFFICE/WAREHOUSE, HEART OF BR HEALTH DISTRICT

8377 PICARDY AVENUE, BATON ROUGE, LA 70809

**12,513 SF**



**MIKE STINSON, CCIM**  
Commercial Sales & Leasing  
(D)225.907.7793  
mike@sr-cre.com

**SAURAGE ROTENBERG COMMERCIAL REAL ESTATE, LLC**  
5135 Bluebonnet Boulevard  
Baton Rouge, LA 70809  
225.766.0000 | sauragerotenberg.com

The information contained herein has either been given to us by property owners or is from sources deemed reliable and is believed to be correct, it is not in any way warranted or guaranteed by Saurage Rotenberg Commercial Real Estate. This information is submitted subject to errors, omissions, changes in price, rental or other conditions, withdrawal without notice, and to any special listing conditions imposed by the principals. Licensed in Louisiana & Mississippi.



**SAURAGE ROTENBERG™**  
COMMERCIAL REAL ESTATE

# BATON ROUGE HEALTH DISTRICT MAP OFFICE/WAREHOUSE, HEART OF BR HEALTH DISTRICT

8377 PICARDY AVENUE, BATON ROUGE, LA 70809

**12,513 SF**

**BATON ROUGE HEALTH DISTRICT / 2015 MASTER PLAN / FUTURE STREET AND LANDSCAPE FRAMEWORK PLAN\***



\* Street network updated from Master Plan to reflect planned construction of streets in and around the new Our Lady of the Lake Children's Hospital (OLOLCH) campus.

BATON ROUGE HEALTH DISTRICT  
Infrastructure Implementation Plan

2018 EXPANDED DISTRICT

Map courtesy of BATON ROUGE HEALTH DISTRICT ([www.brhealthdistrict.com](http://www.brhealthdistrict.com))

**MIKE STINSON, CCIM**  
Commercial Sales & Leasing  
(D)225.907.7793  
[mike@sr-cre.com](mailto:mike@sr-cre.com)

**SAURAGE ROTENBERG COMMERCIAL REAL ESTATE, LLC**  
5135 Bluebonnet Boulevard  
Baton Rouge, LA 70809  
225.766.0000 | [sauragerotenberg.com](http://sauragerotenberg.com)

The information contained herein has either been given to us by property owners or is from sources deemed reliable and is believed to be correct, it is not in any way warranted or guaranteed by Saurage Rotenberg Commercial Real Estate. This information is submitted subject to errors, omissions, changes in price, rental or other conditions, withdrawal without notice, and to any special listing conditions imposed by the principals. Licensed in Louisiana & Mississippi.



**SAURAGE ROTENBERG™**  
COMMERCIAL REAL ESTATE

# DRIVE TIME MAP OFFICE/WAREHOUSE, HEART OF BR HEALTH DISTRICT

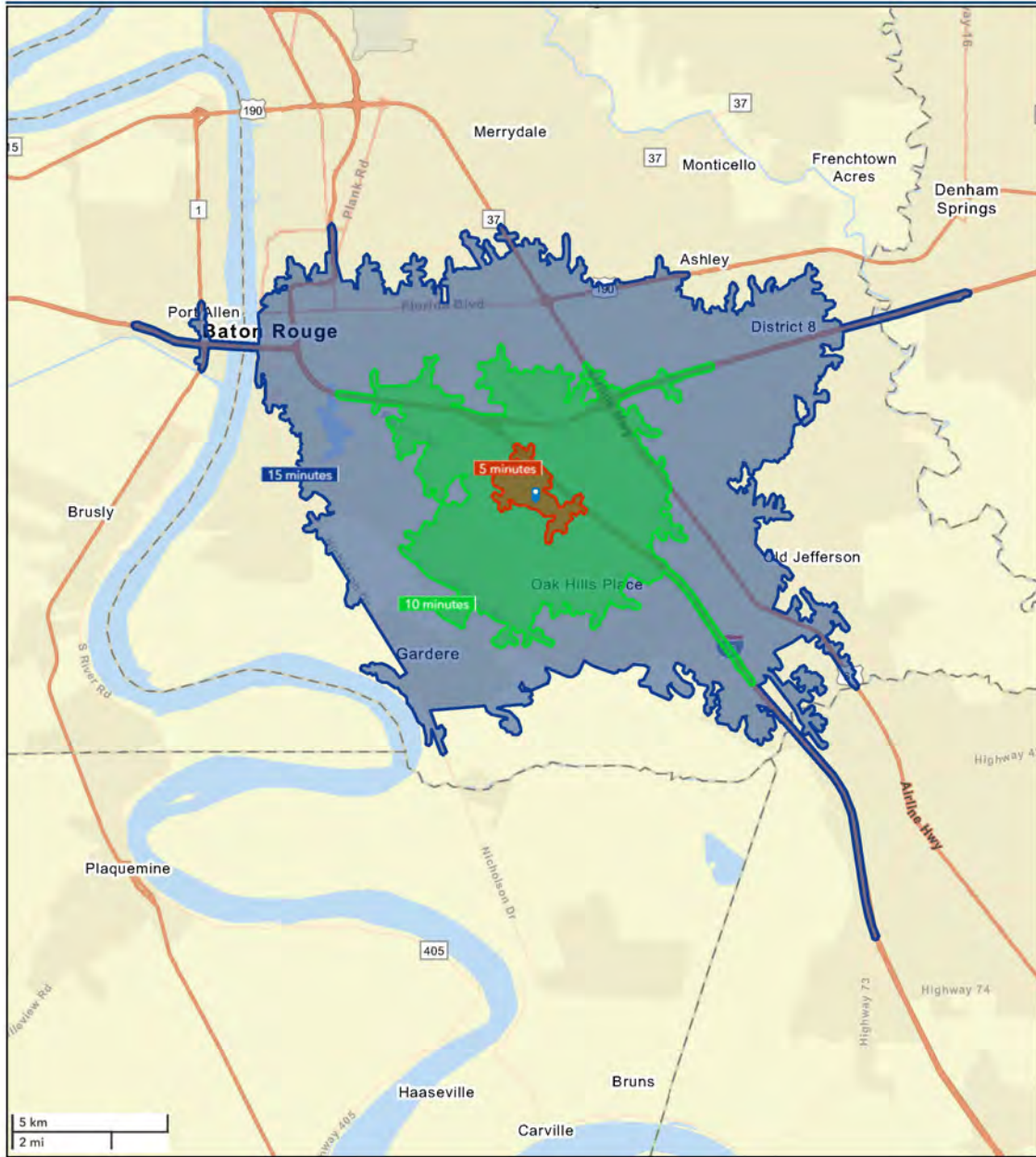
8377 PICARDY AVENUE, BATON ROUGE, LA 70809

**12,513 SF**



Drive Time Map: 5, 10, 15 Minutes

8377 Picardy Ave., Baton Rouge, LA 70816



**MIKE STINSON, CCIM**  
Commercial Sales & Leasing  
(D)225.907.7793  
mike@sr-cre.com

**SAURAGE ROTENBERG COMMERCIAL REAL ESTATE, LLC**  
5135 Bluebonnet Boulevard  
Baton Rouge, LA 70809  
225.766.0000 | sauragerotenberg.com

The information contained herein has either been given to us by property owners or is from sources deemed reliable and is believed to be correct, it is not in any way warranted or guaranteed by Saurage Rotenberg Commercial Real Estate. This information is submitted subject to errors, omissions, changes in price, rental or other conditions, withdrawal without notice, and to any special listing conditions imposed by the principals. Licensed in Louisiana & Mississippi.



**SAURAGE ROTENBERG™**  
COMMERCIAL REAL ESTATE

# TRAFFIC COUNT MAP

## OFFICE/WAREHOUSE, HEART OF BR HEALTH DISTRICT

8377 PICARDY AVENUE, BATON ROUGE, LA 70809

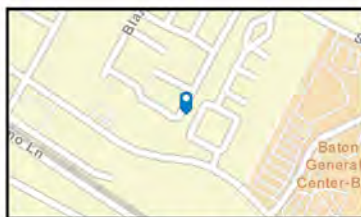
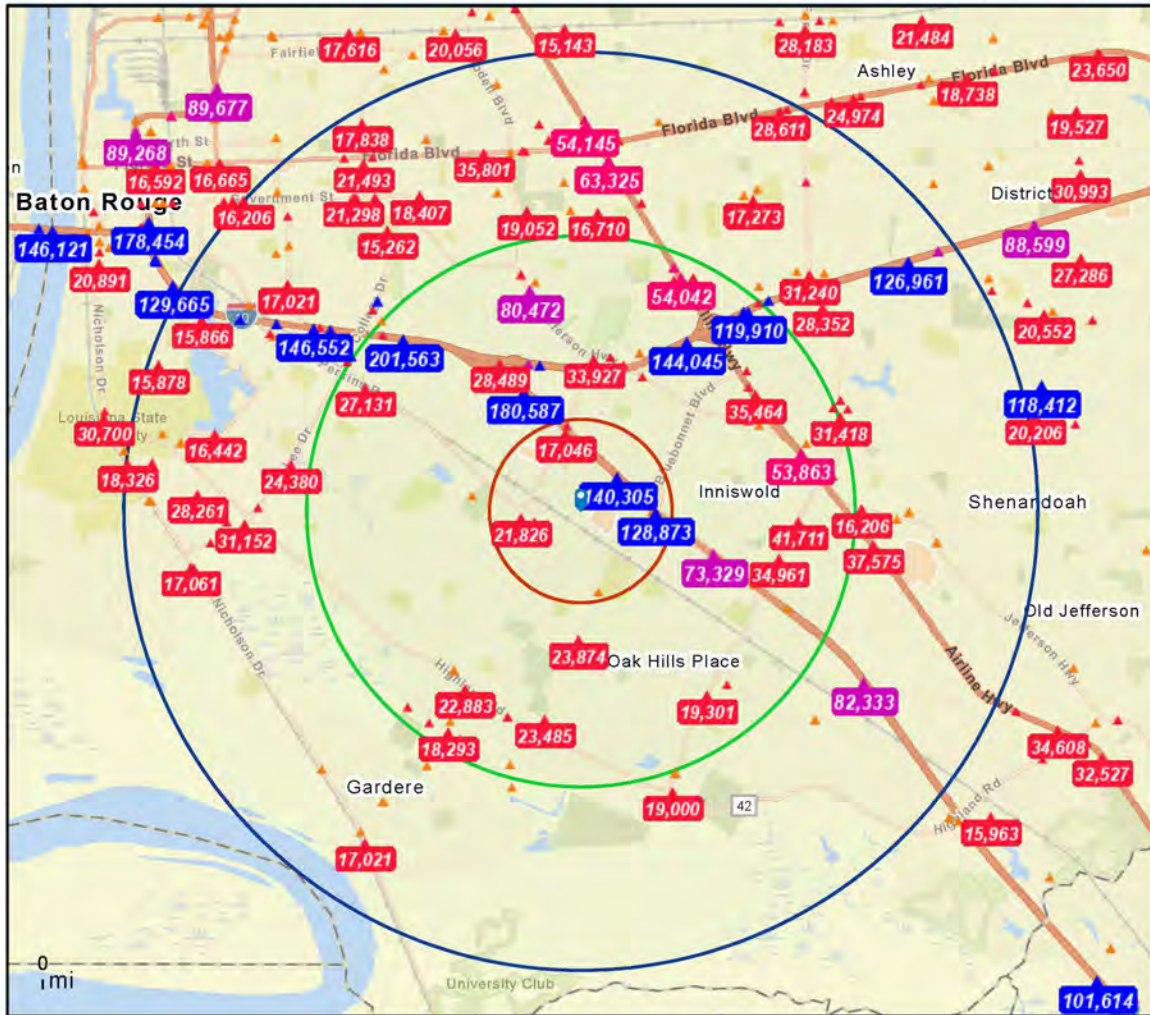
**12,513 SF**



### Traffic Count Map

8377 Picardy Ave, Baton Rouge, Louisiana, 70809  
Rings: 1, 3, 5 mile radii

Prepared by Esri  
Latitude: 30.39492  
Longitude: -91.09911



**Average Daily Traffic Volume**  
▲ Up to 6,000 vehicles per day  
▲ 6,001 - 15,000  
▲ 15,001 - 30,000  
▲ 30,001 - 50,000  
▲ 50,001 - 100,000  
▲ More than 100,000 per day



**MIKE STINSON, CCIM**  
Commercial Sales & Leasing  
(D)225.907.7793  
mike@sr-cre.com

**SAURAGE ROTENBERG COMMERCIAL REAL ESTATE, LLC**  
5135 Bluebonnet Boulevard  
Baton Rouge, LA 70809  
225.766.0000 | sauragerotenberg.com

The information contained herein has either been given to us by property owners or is from sources deemed reliable and is believed to be correct, it is not in any way warranted or guaranteed by Saurage Rotenberg Commercial Real Estate. This information is submitted subject to errors, omissions, changes in price, rental or other conditions, withdrawal without notice, and to any special listing conditions imposed by the principals. Licensed in Louisiana & Mississippi.



**SAURAGE ROTENBERG™**  
COMMERCIAL REAL ESTATE

**FLOOR PLAN**  
**OFFICE/WAREHOUSE, HEART OF BR HEALTH DISTRICT**  
8377 PICARDY AVENUE, BATON ROUGE, LA 70809

**12,513 SF**



**MIKE STINSON, CCIM**  
Commercial Sales & Leasing  
(D)225.907.7793  
mike@sr-cre.com

**SAURAGE ROTENBERG COMMERCIAL REAL ESTATE, LLC**  
5135 Bluebonnet Boulevard  
Baton Rouge, LA 70809  
225.766.0000 | sauragerotenberg.com

The information contained herein has either been given to us by property owners or is from sources deemed reliable and is believed to be correct, it is not in any way warranted or guaranteed by Saurage Rotenberg Commercial Real Estate. This information is submitted subject to errors, omissions, changes in price, rental or other conditions, withdrawal without notice, and to any special listing conditions imposed by the principals. Licensed in Louisiana & Mississippi.