

SUMMARY

AERIAL

CLOSE-UP AERIAL

DEMOGRAPHICS

FOR SALE

PROPERTY OVERVIEW

The St Landry Cinema is currently operating and has long been a free-standing theatre since its original construction. This building is located just off of the I-49 Service road and would offer a great opportunity for multiples business', including Retail, and or an Industrial/Distribution business. The location, building configuration and positioned site plan offers a multitude of expansion and retrofit options.

******The building is still currently operated as a movie theatre so please contact the listing agent for showing details.***

BUILDING DETAILS

- 1.286 Acres
- 1st Floor - Approx. 9,000 SF
- 2nd Floor - Approx. 1,800 SF

PRICING

- \$675,000

NEARBY RETAILERS

- St Landry Plaza Shopping Center
- Louisiana Family Fitness Center
- Super 1 Foods
- Walmart
- Cash Saver

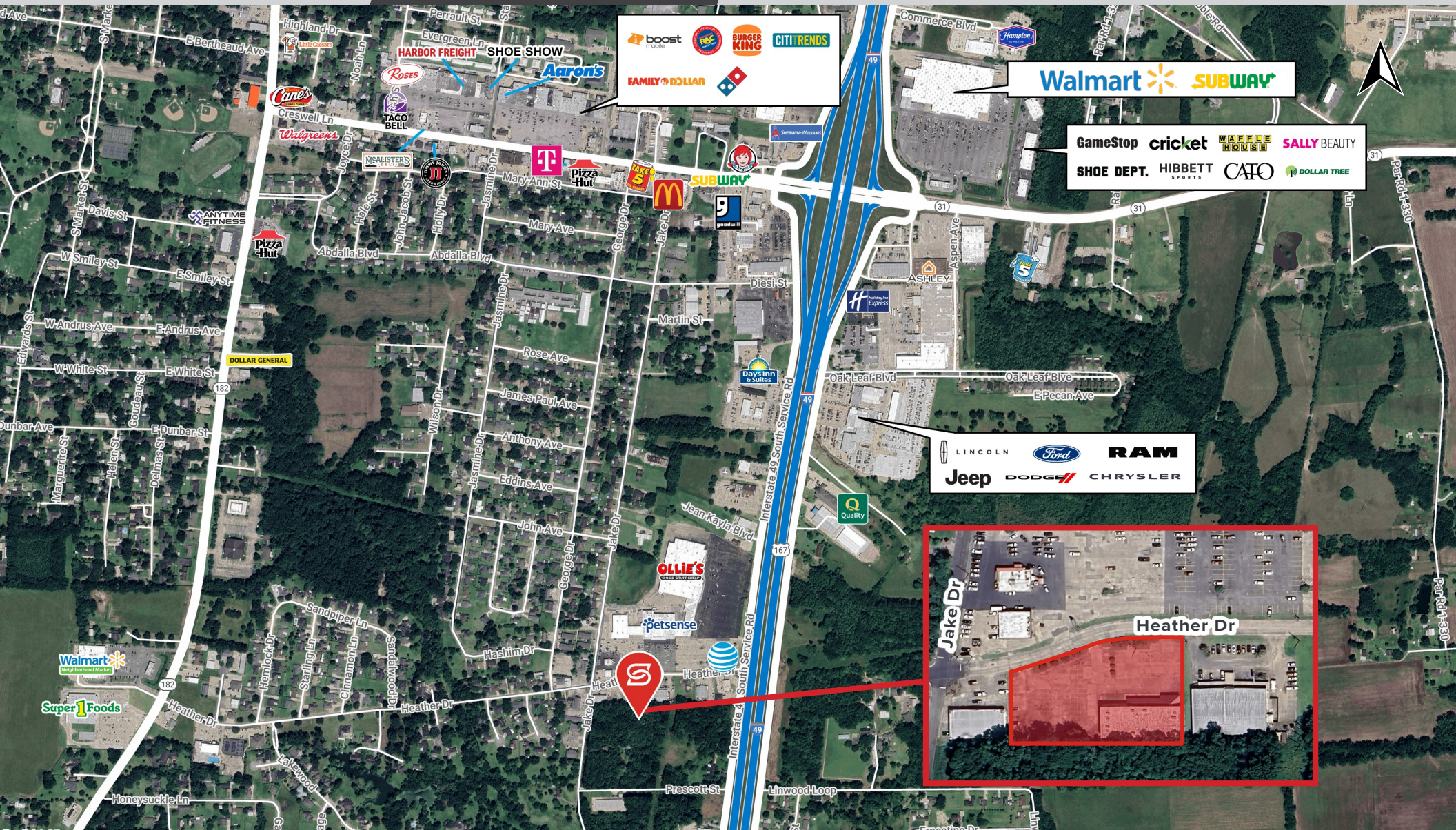


SUMMARY

AERIAL

CLOSE-UP AERIAL

DEMOGRAPHICS



stirling

SETH CITRON
Office: 337-234-4481
Direct: 337-572-0273
scitron@stirlingprop.com

ST. LANDRY CINEMA

1234 Heather Drive, Opelousas, LA

SUMMARY

AERIAL

CLOSE-UP AERIAL

DEMOGRAPHICS

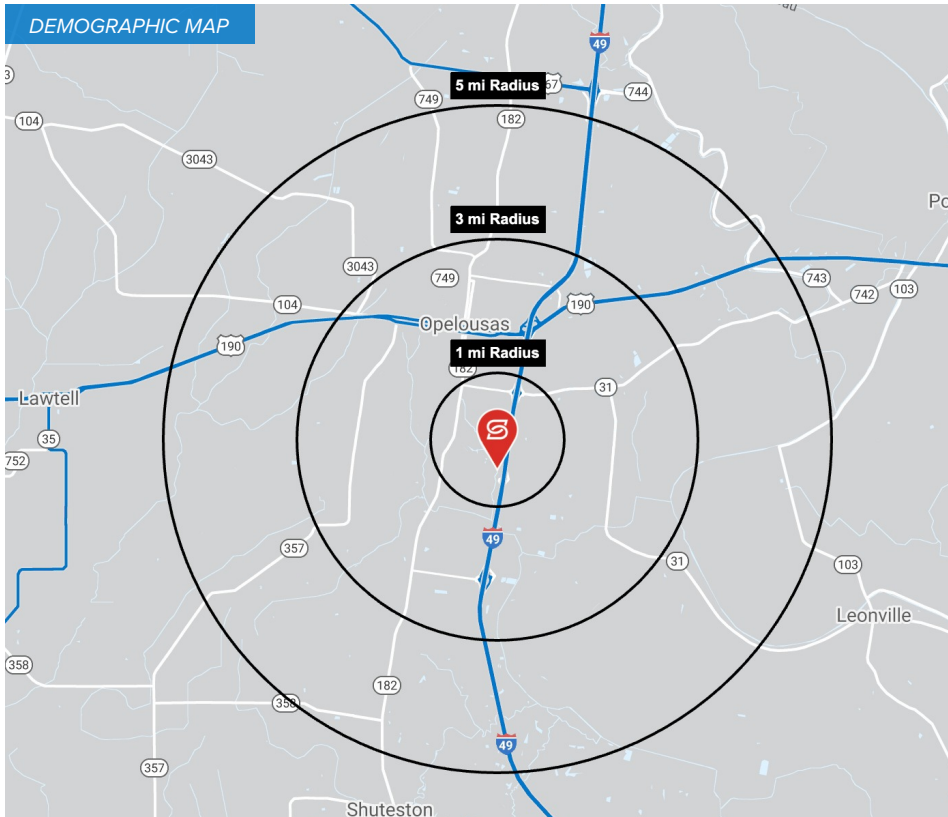


SUMMARY

AERIAL

CLOSE-UP AERIAL

DEMOGRAPHICS



2024 DEMOGRAPHICS

1 MILE

3 MILE

5 MILE



2,979

19,903

29,243

1 MILE

3 MILE

5 MILE



\$97,695

\$63,369

\$67,003

1 MILE

3 MILE

5 MILE



1,229

7,646

11,155