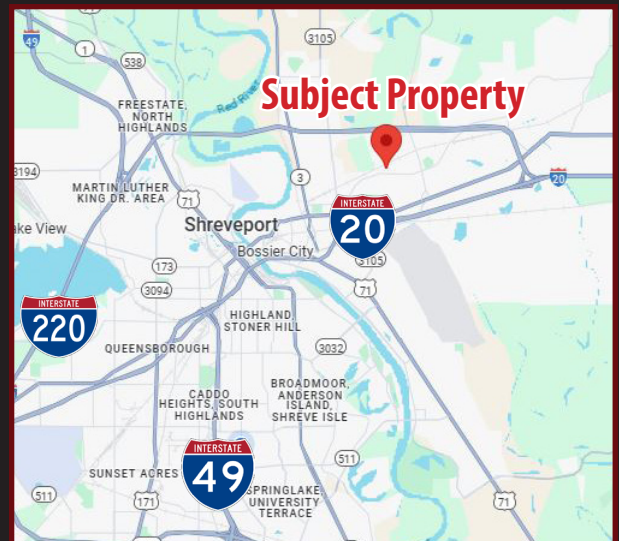




INDUSTRIAL WAREHOUSE/OFFICE FOR LEASE

1406 ALPINE BOULEVARD, BOSSIER CITY, LA 71111

- 5,000 SF Industrial Office/Flex/Warehouse Building
- Entire Building is Climate Controlled
- Building includes Open Work/Service Area with Plumbing, 2 Individual Offices, Restroom
- One (1) Overhead Door
- Located in Industrial Park
- Zoned A-1
- \$12/SF Modified Gross plus Utilities



For more information, contact:

Hilary Bransford | 318.222.2244

hbransford@vintagerealty.com | vintagerealty.com

ALL INFORMATION CONTAINED HEREIN IS BELIEVED TO BE ACCURATE, BUT IS NOT WARRANTED AND NO LIABILITY OF ERRORS OR OMISSIONS IS ASSURED BY EITHER THE PROPERTY OWNER OR VINTAGE REALTY COMPANY OR ITS AGENTS AND EMPLOYEES. PRICES AS STATED HEREIN AND PRODUCT AVAILABILITY IS SUBJECT TO CHANGE AND/OR SALE OR LEASE WITHOUT PRIOR NOTICE, AND ALL SIZES AND DIMENSIONS ARE SUBJECT TO CORRECTION. REV 8/2025



INDUSTRIAL WAREHOUSE/OFFICE FOR LEASE

1406 ALPINE BOULEVARD
BOSSIER CITY, LA 71111



For More Information Contact:

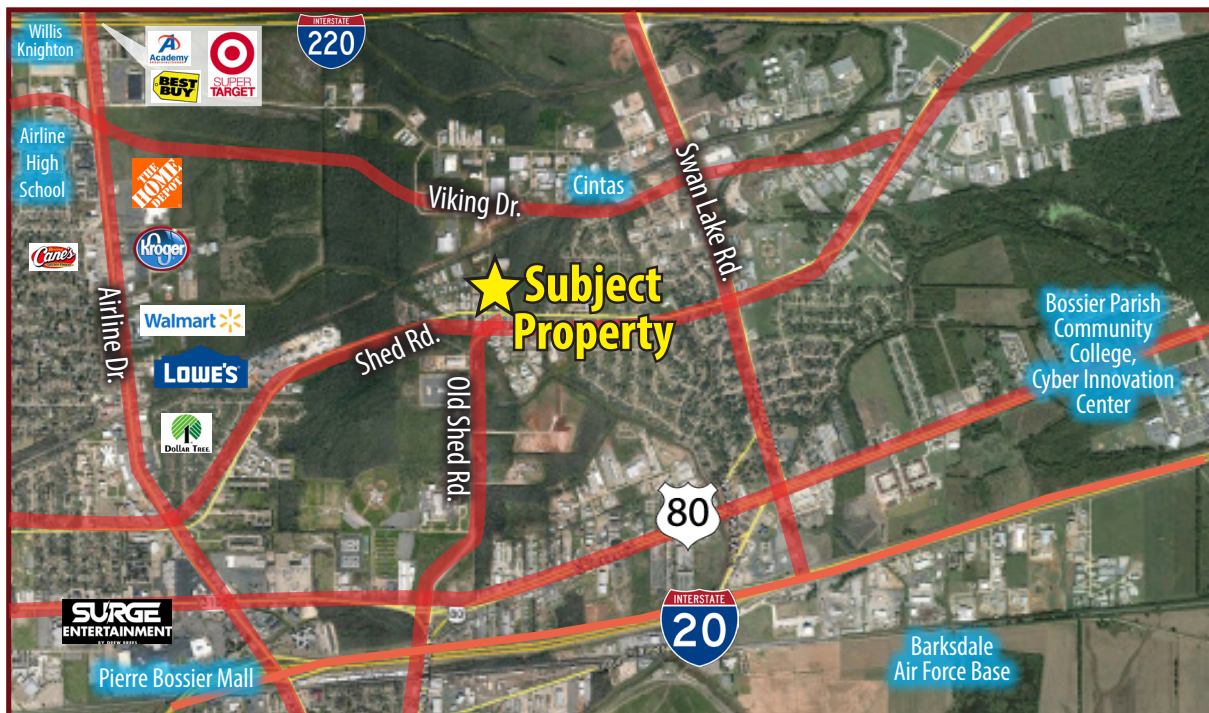
Hilary Bransford | 318.222.2244

hbransford@vintagerealty.com | vintagerealty.com

ALL INFORMATION CONTAINED HEREIN IS BELIEVED TO BE ACCURATE, BUT IS NOT WARRANTED AND NO LIABILITY OF ERRORS OR OMISSIONS IS ASSURED BY EITHER THE PROPERTY OWNER OR VINTAGE REALTY COMPANY OR ITS AGENTS AND EMPLOYEES. PRICES AS STATED HEREIN AND PRODUCT AVAILABILITY IS SUBJECT TO CHANGE AND/OR SALE OR LEASE WITHOUT PRIOR NOTICE, AND ALL SIZES AND DIMENSIONS ARE SUBJECT TO CORRECTION. 8/2025

INDUSTRIAL WAREHOUSE/OFFICE FOR LEASE

1406 ALPINE BOULEVARD
BOSSIER CITY, LA 71111



For More Information Contact:

Hilary Bransford | 318.222.2244

hbransford@vintagerealty.com | vintagerealty.com

ALL INFORMATION CONTAINED HEREIN IS BELIEVED TO BE ACCURATE, BUT IS NOT WARRANTED AND NO LIABILITY OF ERRORS OR OMISSIONS IS ASSURED BY EITHER THE PROPERTY OWNER OR VINTAGE REALTY COMPANY OR ITS AGENTS AND EMPLOYEES. PRICES AS STATED HEREIN AND PRODUCT AVAILABILITY IS SUBJECT TO CHANGE AND/OR SALE OR LEASE WITHOUT PRIOR NOTICE, AND ALL SIZES AND DIMENSIONS ARE SUBJECT TO CORRECTION. 8/2025