

For Sale

VACANT LAND FOR SALE

15801 GEORGE O'NEAL, BATON ROUGE, LA 70817

\$8.50/SF



PROPERTY INFO:

- Prime vacant land tract for sale on George O'Neal near the corner of O'Neal and George O'Neal
- 210 feet of frontage on George O'Neal Road
- Property has access to both O'Neal Ln and George O'Neal
- Located near Shenandoah, a densely populated subdivision
- Site can be a build to suit for the right user

CLAY FURR | c [225] 229-0753 | f [225] 408-9596 | clay@momentum-commercial.com

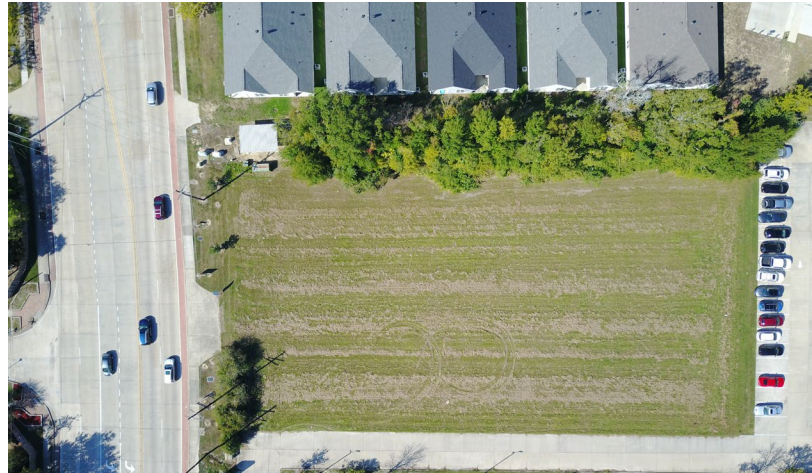
Broker of Record, Charles F. Colvin, Momentum Commercial Real Estate, LLC; Licensed by the Louisiana Real Estate Commission. This information has been secured from sources we believe to be reliable, but we make no representations or warranties, expressed or implied, as to the accuracy of the information. References to square footage or age are approximate. Buyer must verify the information and bears all risk for any inaccuracies.

For Sale

VACANT LAND FOR SALE

15801 GEORGE O'NEAL, BATON ROUGE, LA 70817

\$8.50/SF



CLAY FURR | c [225] 229-0753 | f [225] 408-9596 | clay@momentum-commercial.com

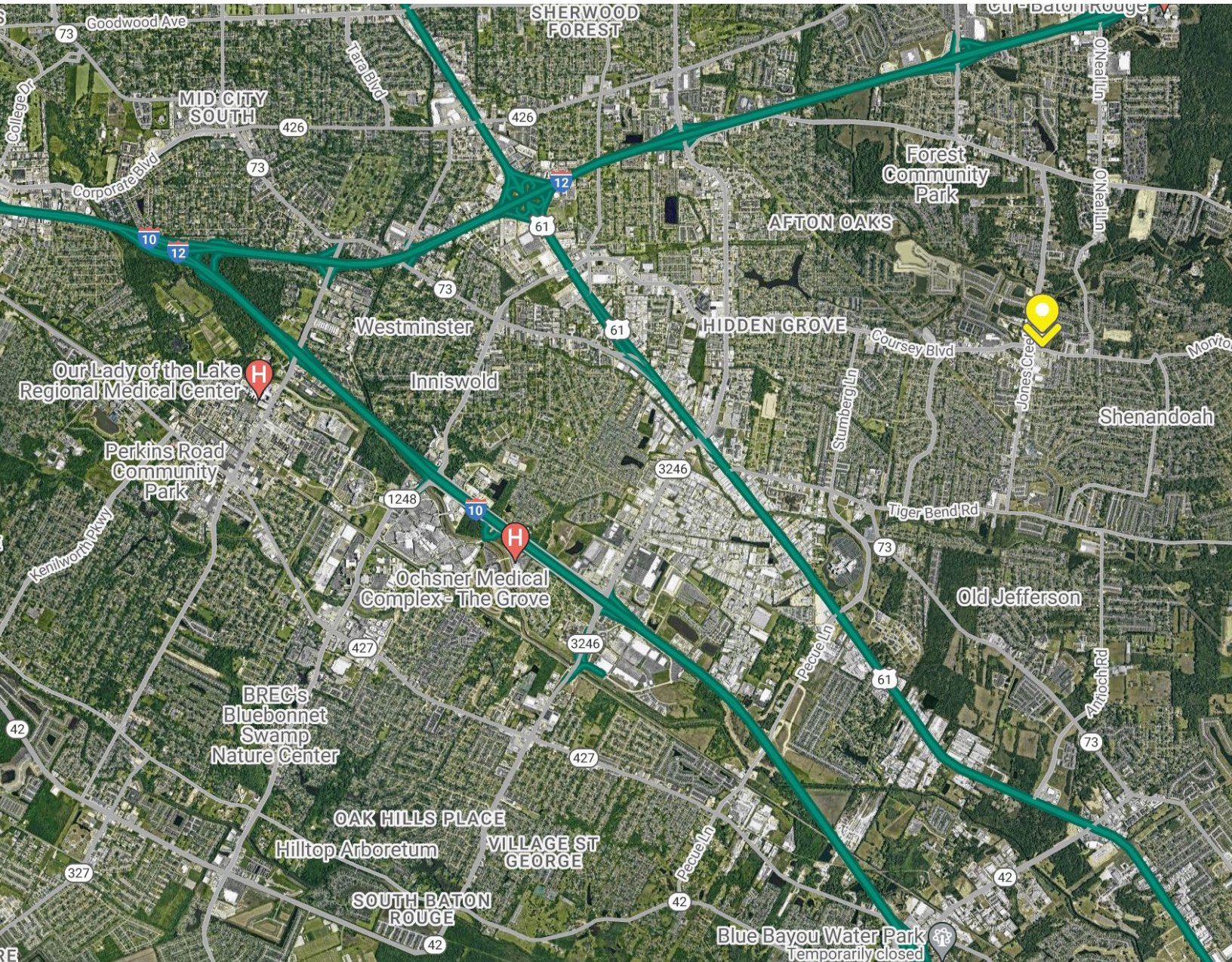
Broker of Record, Charles F. Colvin, Momentum Commercial Real Estate, LLC; Licensed by the Louisiana Real Estate Commission. This information has been secured from sources we believe to be reliable, but we make no representations or warranties, expressed or implied, as to the accuracy of the information. References to square footage or age are approximate. Buyer must verify the information and bears all risk for any inaccuracies.

For Sale

VACANT LAND FOR SALE

15801 GEORGE O'NEAL, BATON ROUGE, LA 70817

\$8.50/SF



CLAY FURR c [225] 229-0753 | f [225] 408-9596 | clay@momentum-commercial.com

Broker of Record, Charles F. Colvin, Momentum Commercial Real Estate, LLC; Licensed by the Louisiana Real Estate Commission. This information has been secured from sources we believe to be reliable, but we make no representations or warranties, expressed or implied, as to the accuracy of the information. References to square footage or age are approximate. Buyer must verify the information and bears all risk for any inaccuracies.

For Sale

VACANT LAND FOR SALE

15801 GEORGE O'NEAL, BATON ROUGE, LA 70817

\$8.50/SF

Shenandoah, LA 70817	1 mi radius	3 mi radius	5 mi radius
Population			
2023 Estimated Population	9,190	66,620	141,305
2028 Projected Population	8,970	65,620	139,465
2020 Census Population	9,306	67,071	142,632
2010 Census Population	8,688	65,681	138,106
Projected Annual Growth 2023 to 2028	-0.5%	-0.3%	-0.3%
Historical Annual Growth 2010 to 2023	0.4%	0.1%	0.2%
Households			
2023 Estimated Households	3,937	28,399	58,982
2028 Projected Households	3,771	27,416	57,112
2020 Census Households	3,945	28,265	58,926
2010 Census Households	3,522	26,991	55,707
Projected Annual Growth 2023 to 2028	-0.8%	-0.7%	-0.6%
Historical Annual Growth 2010 to 2023	0.9%	0.4%	0.5%
Age			
2023 Est. Population Under 10 Years	11.3%	13.6%	13.3%
2023 Est. Population 10 to 19 Years	11.4%	11.3%	11.4%
2023 Est. Population 20 to 29 Years	15.1%	17.2%	16.0%
2023 Est. Population 30 to 44 Years	21.1%	21.5%	21.1%
2023 Est. Population 45 to 59 Years	19.2%	16.9%	17.0%
2023 Est. Population 60 to 74 Years	17.1%	14.8%	15.3%
2023 Est. Population 75 Years or Over	4.8%	4.7%	5.8%
2023 Est. Median Age	37.7	35.0	36.0
Marital Status & Gender			
2023 Est. Male Population	48.1%	47.6%	47.7%
2023 Est. Female Population	51.9%	52.4%	52.3%
2023 Est. Never Married	28.6%	37.5%	36.8%
2023 Est. Now Married	52.1%	43.8%	43.7%
2023 Est. Separated or Divorced	13.4%	13.8%	14.2%
2023 Est. Widowed	5.9%	4.8%	5.3%
Income			
2023 Est. HH Income \$200,000 or More	11.8%	12.2%	14.6%
2023 Est. HH Income \$150,000 to \$199,999	13.2%	10.4%	9.5%
2023 Est. HH Income \$100,000 to \$149,999	20.0%	14.6%	15.1%
2023 Est. HH Income \$75,000 to \$99,999	13.3%	11.6%	10.9%
2023 Est. HH Income \$50,000 to \$74,999	18.0%	17.8%	16.7%
2023 Est. HH Income \$35,000 to \$49,999	9.3%	12.1%	11.1%
2023 Est. HH Income \$25,000 to \$34,999	3.8%	8.1%	7.7%
2023 Est. HH Income \$15,000 to \$24,999	5.0%	6.3%	7.0%
2023 Est. HH Income Under \$15,000	5.6%	7.0%	7.5%
2023 Est. Average Household Income	\$120,080	\$106,439	\$113,228
2023 Est. Median Household Income	\$96,486	\$86,431	\$88,314
2023 Est. Per Capita Income	\$51,452	\$45,423	\$47,363
2023 Est. Total Businesses	434	4,284	9,161
2023 Est. Total Employees	2,735	40,100	95,007

©2023, Sites USA, Chandler, Arizona, 480-491-1112 Demographic Source: Applied Geographic Solutions 4/2023, TIGER Geography - RF1

This report was produced using data from private and government sources deemed to be reliable. The information herein is provided without representation or warranty.

CLAY FURR c [225] 229-0753 | f [225] 408-9596 | clay@momentum-commercial.com

Broker of Record, Charles F. Colvin, Momentum Commercial Real Estate, LLC; Licensed by the Louisiana Real Estate Commission. This information has been secured from sources we believe to be reliable, but we make no representations or warranties, expressed or implied, as to the accuracy of the information. References to square footage or age are approximate. Buyer must verify the information and bears all risk for any inaccuracies.