

UP TO 29 ACRES

IOS YARD FOR LEASE

GEISMAR, LOUISIANA



CBRE

PROPERTY OVERVIEW

HIGHLIGHTS

- ±29 Acres of Stabilized Yard Available for Lease
- Divisible in 8, 1-21 and 29-Acre Parcels.
- Excellent Location with Private, Gated Access
- Proximity to a Variety of Major Petrochemical Facilities Along the Mississippi River
- Well Positioned to Serve as Staging Area, Drop Yard or Off-Site Storage for Local Industrial Service Providers
- Owner Agent(s)

Up to 29 Contiguous

ACREAGE

\$2,900 / ACRE / MONTH

LEASE RATE

FENCED & GATED

SECURITY

34544 E HWY 30

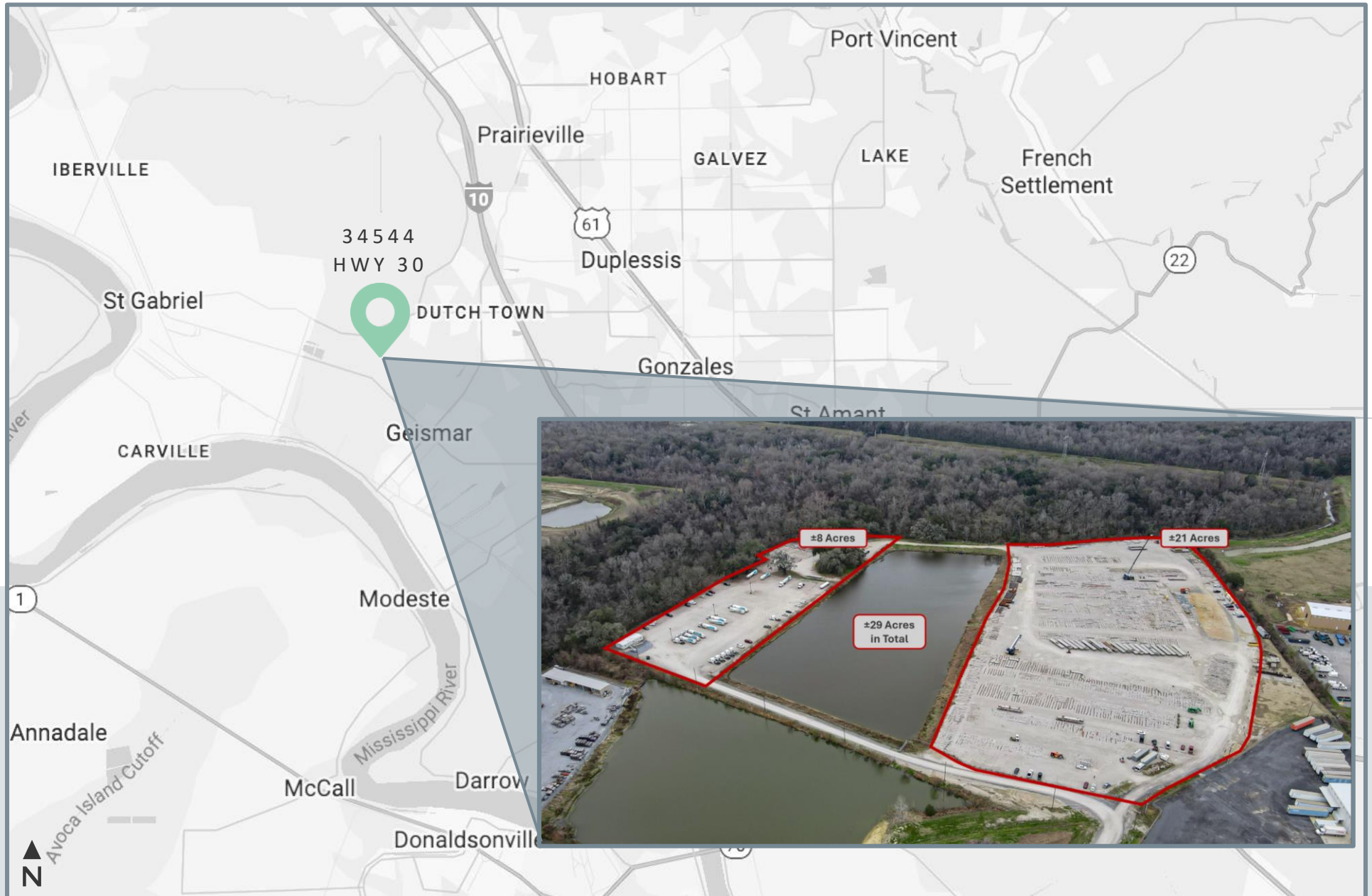
APPROXIMATE ADDRESS



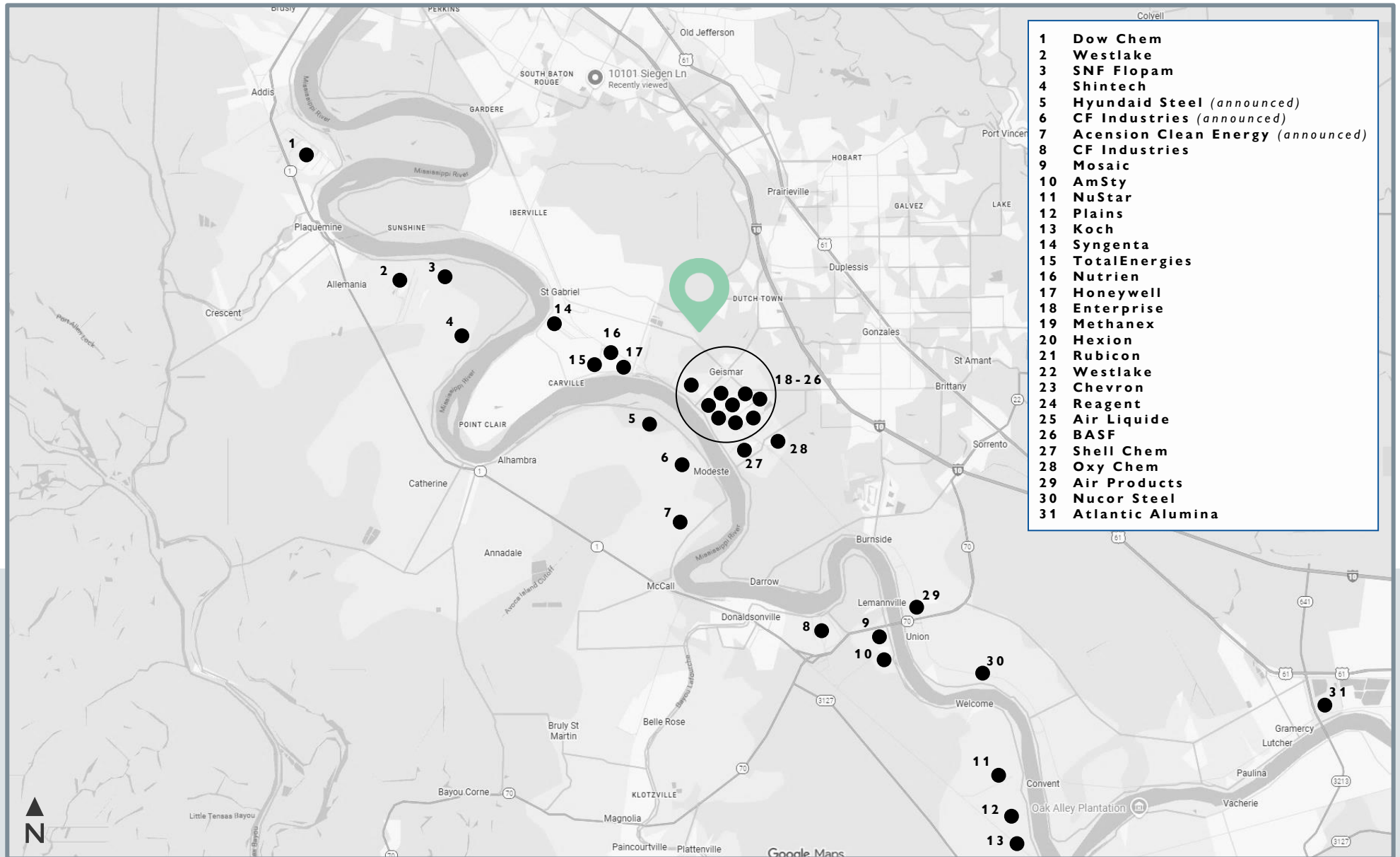
SITE AERIAL



LOCATION MAP



INDUSTRY MAP





IOS YARD FOR LEASE

UP TO 29 ACRES

GEISMAR, LOUISIANA

MICHAEL CASHIO, SIOR, CCIM
Senior Vice President

+1 225 247 9812
michael.cashio@cbre.com

ALEX MCCOLLAM
Associate

+1 832 584 9162
alex.mccollam@cbre.com



© 2025 CBRE, Inc. All rights reserved. This information has been obtained from sources believed reliable but has not been verified for accuracy or completeness. CBRE, Inc. makes no guarantee, representation or warranty and accepts no responsibility or liability as to the accuracy, completeness, or reliability of the information contained herein. You should conduct a careful, independent investigation of the property and verify all information. Any reliance on this information is solely at your own risk. CBRE and the CBRE logo are service marks of CBRE, Inc. All other marks displayed on this document are the property of their respective owners, and the use of such marks does not imply any affiliation with or endorsement of CBRE. Photos herein are the property of their respective owners. Use of these images without the express written consent of the owner is prohibited.