



stirling

UNITED PLAZA I, II, IV, & VIII

BATON ROUGE, LA

SCOTT MACDONALD, SIOR

Direct: 225-201-0142

smacdonald@stirlingprop.com

8550 United Plaza Blvd., Ste. 101,
Baton Rouge, LA, 70809



CLASS-A OFFICE SPACE FOR LEASE

PROPERTY HIGHLIGHTS

- Four-building Class “A” Office Project totaling 420,909 SF
- Prominent Baton Rouge location with excellent identity
- Highly visible buildings with monument signage available
- Buildings are home to some of the finest tech companies in both the region and the nation
- Available spaces ranging between 1,000 SF – 15,000 SF
- Conveniently located to retail and restaurants
- On-site property management with 24-hour security
- Excellent access to Interstate 10 and Interstate 12
- Covered and Surfaced Parking

SCOTT MACDONALD, SIOR

Direct: 225-201-0142 | smacdonald@stirlingprop.com
8550 United Plaza Blvd., Ste. 101, Baton Rouge, LA, 70809

The foregoing is solely for information purposes and is subject to change without notice. Stirling Properties makes no representations or warranties regarding the properties or information herein including but not limited to any and all images pertaining to these properties. It is the obligation of each purchaser/lessee to investigate the condition and attributes of the properties and to verify the accuracy of the foregoing information to the extent such purchaser/lessee deems necessary. Also subject to errors, omissions, changes in terms and conditions, prior sale, lease or withdrawal, without notice. 10/25

CLASS-A OFFICE SPACE FOR LEASE



United Plaza I - 4041 Essen Ln.

- Total Square Feet: 94,863
- Year Built: 1980
- Floors: 5
- Parking Ratio: 3.14 per 1,000
- 24-Hour Access System
- On-Site Security Cameras



United Plaza II - 8550 United Plaza Blvd.

- Total Square Feet: 198,696
- Year Built: 1983
- Floors: 10
- Parking Ratio: 3.14 per 1,000
- 1 Restaurant Inside Building: Rouge Rabbit
- Back-Up Generator on 8th Floor
- Freight Elevator & Loading Dock Available
- 24-Hour Security System
- On-Site Security Cameras



United Plaza IV - 8555 United Plaza Blvd.

- Total Square Feet: 71,460
- Year Built: 1986; Renovated 2011
- Floors: 5
- Parking Ratio: 3 per 1,000
- Common area plaza with waterfront view
- 24-Hour Access System



United Plaza VIII - 8641 United Plaza Blvd.

- Total Square Feet: 55,905
- Year Built: 1993
- Floors: 3
- Parking Ratio: 3 per 1,000
- Back-Up Generator
- 24-Hour Access System

SCOTT MACDONALD, SIOR

Direct: 225-201-0142 | smacdonald@stirlingprop.com
8550 United Plaza Blvd., Ste. 101, Baton Rouge, LA, 70809

The foregoing is solely for information purposes and is subject to change without notice. Stirling Properties makes no representations or warranties regarding the properties or information herein including but not limited to any and all images pertaining to these properties. It is the obligation of each purchaser/lessee to investigate the condition and attributes of the properties and to verify the accuracy of the foregoing information to the extent such purchaser/lessee deems necessary. Also subject to errors, omissions, changes in terms and conditions, prior sale, lease or withdrawal, without notice. 10/25

CLASS-A OFFICE SPACE FOR LEASE



United Plaza I - 4041 Essen Ln.

- This building is 100% occupied.



United Plaza II - 8550 United Plaza Blvd.

Available

• Second Floor	Suite 210	3,774 SF	Jan. 2026
• Third Floor	Suite 309	1,238 SF	Now
• Fourth Floor	Suite 402	4,015 SF	Now
• Sixth Floor	Suite 605	3,183 SF	Now
• Nienth Floor	Suite 901	5,533 SF	Now



United Plaza IV - 8555 United Plaza Blvd.

- This building is 100% occupied.



United Plaza VIII - 8641 United Plaza Blvd.

- This building is 100% occupied.

SCOTT MACDONALD, SIOR

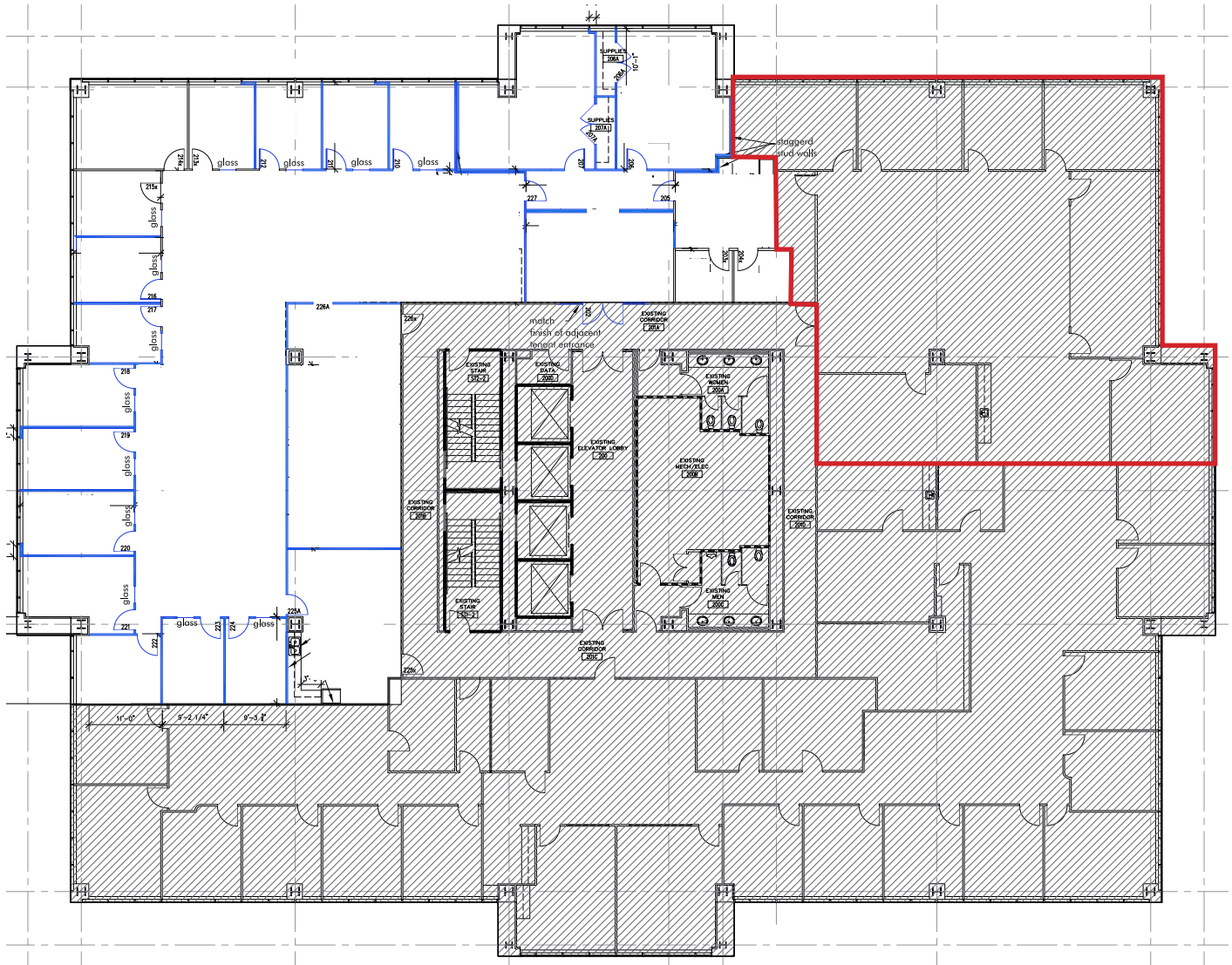
Direct: 225-201-0142 | smacdonald@stirlingprop.com

8550 United Plaza Blvd., Ste. 101, Baton Rouge, LA, 70809

The foregoing is solely for information purposes and is subject to change without notice. Stirling Properties makes no representations or warranties regarding the properties or information herein including but not limited to any and all images pertaining to these properties. It is the obligation of each purchaser/lessee to investigate the condition and attributes of the properties and to verify the accuracy of the foregoing information to the extent such purchaser/lessee deems necessary. Also subject to errors, omissions, changes in terms and conditions, prior sale, lease or withdrawal, without notice. 10/25

Available For Lease - Second Floor

Suite 210 - 3,774 SF



SCOTT MACDONALD

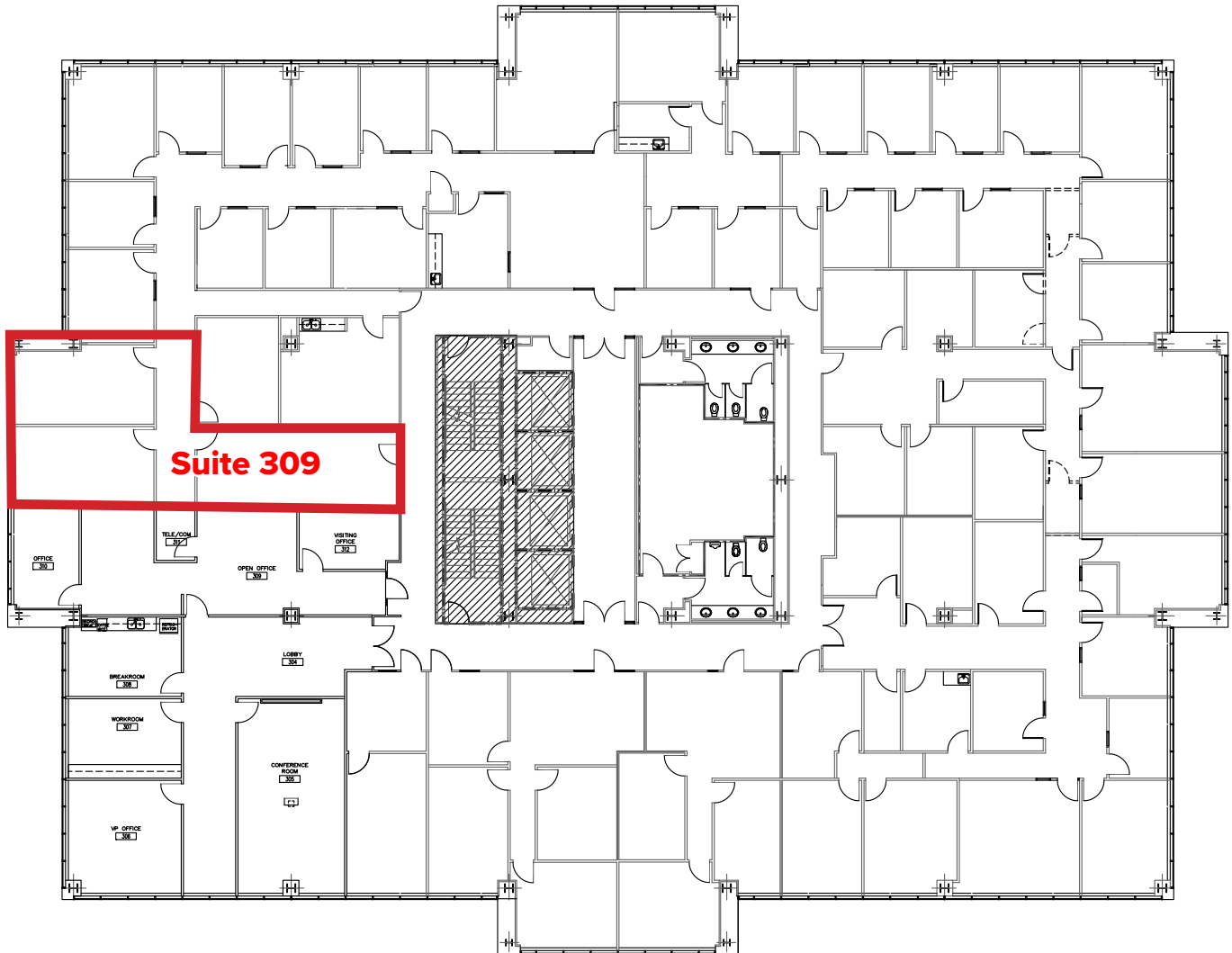
Direct: 225-201-0142 | smacdonald@stirlingprop.com

8550 United Plaza Blvd., Ste. 101, Baton Rouge, LA, 70809

The foregoing is solely for information purposes and is subject to change without notice. Stirling Properties makes no representations or warranties regarding the properties or information herein including but not limited to any and all images pertaining to these properties. It is the obligation of each purchaser/lessee to investigate the condition and attributes of the properties and to verify the accuracy of the foregoing information to the extent such purchaser/lessee deems necessary. Also subject to errors, omissions, changes in terms and conditions, prior sale, lease or withdrawal, without notice. 10/25

Available For Lease - Third Floor

Suite 309 - 1,238 SF



SCOTT MACDONALD, SIOR

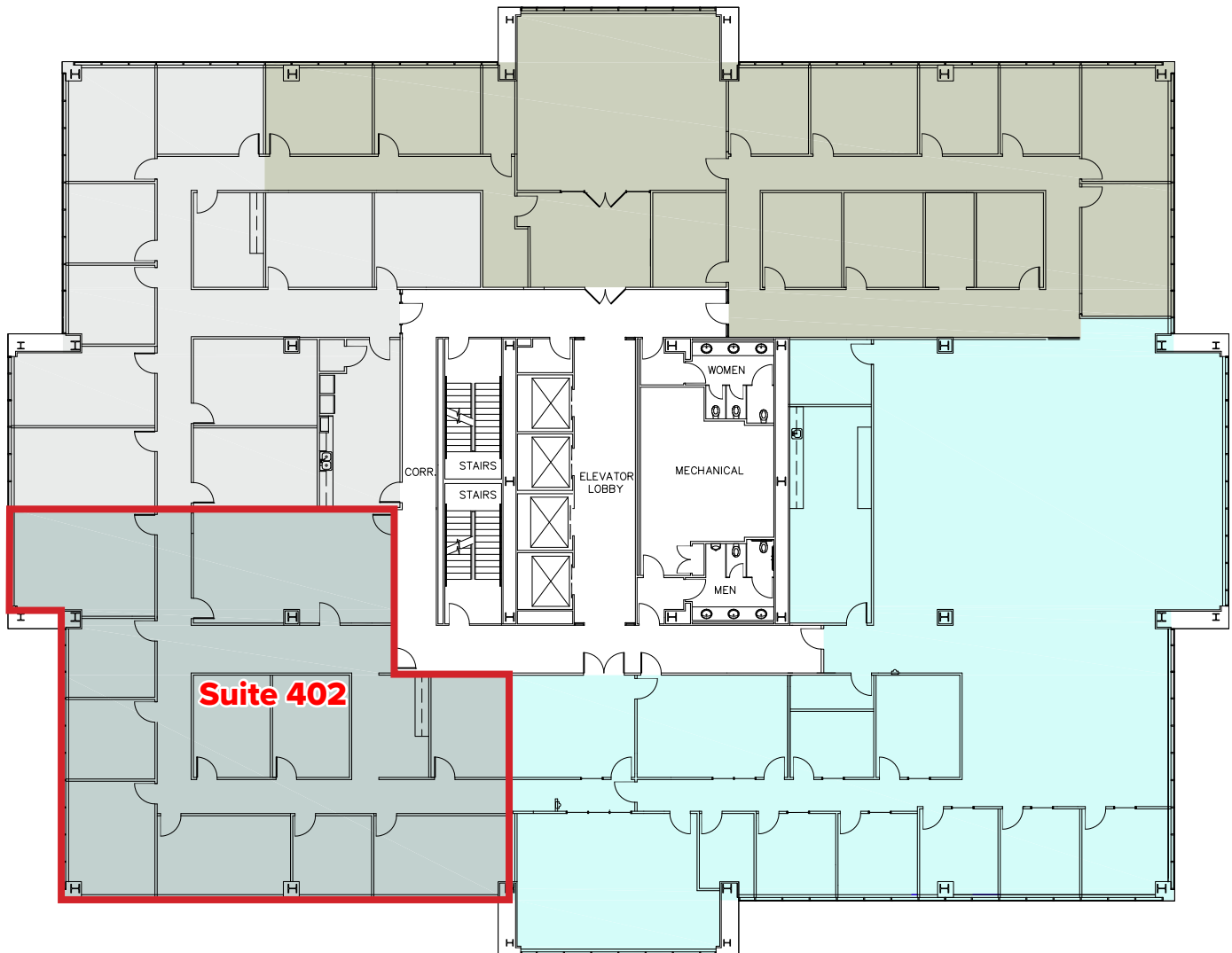
Direct: 225-201-0142 | smacdonald@stirlingprop.com

8550 United Plaza Blvd., Ste. 101, Baton Rouge, LA, 70809

The foregoing is solely for information purposes and is subject to change without notice. Stirling Properties makes no representations or warranties regarding the properties or information herein including but not limited to any and all images pertaining to these properties. It is the obligation of each purchaser/lessee to investigate the condition and attributes of the properties and to verify the accuracy of the foregoing information to the extent such purchaser/lessee deems necessary. Also subject to errors, omissions, changes in terms and conditions, prior sale, lease or withdrawal, without notice. 10/25

Available For Lease - Fourth Floor

Suite 402 - 4,015 SF



SCOTT MACDONALD

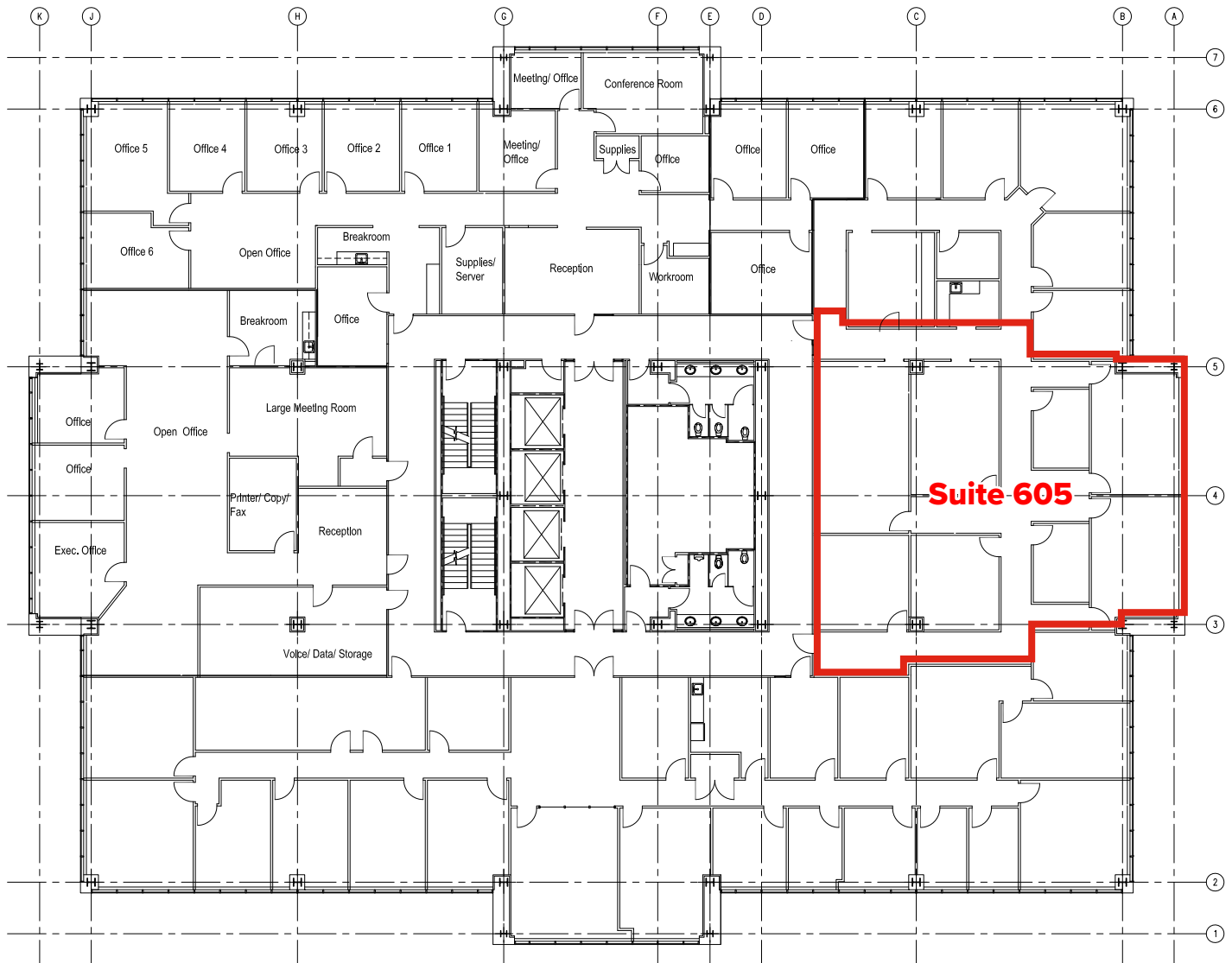
Direct: 225-201-0142 | smacdonald@stirlingprop.com

8550 United Plaza Blvd., Ste. 101, Baton Rouge, LA, 70809

The foregoing is solely for information purposes and is subject to change without notice. Stirling Properties makes no representations or warranties regarding the properties or information herein including but not limited to any and all images pertaining to these properties. It is the obligation of each purchaser/lessee to investigate the condition and attributes of the properties and to verify the accuracy of the foregoing information to the extent such purchaser/lessee deems necessary. Also subject to errors, omissions, changes in terms and conditions, prior sale, lease or withdrawal, without notice. 10/25

Available For Lease - Sixth Floor

Suite 605 - 3,183 SF



SCOTT MACDONALD, SIOR

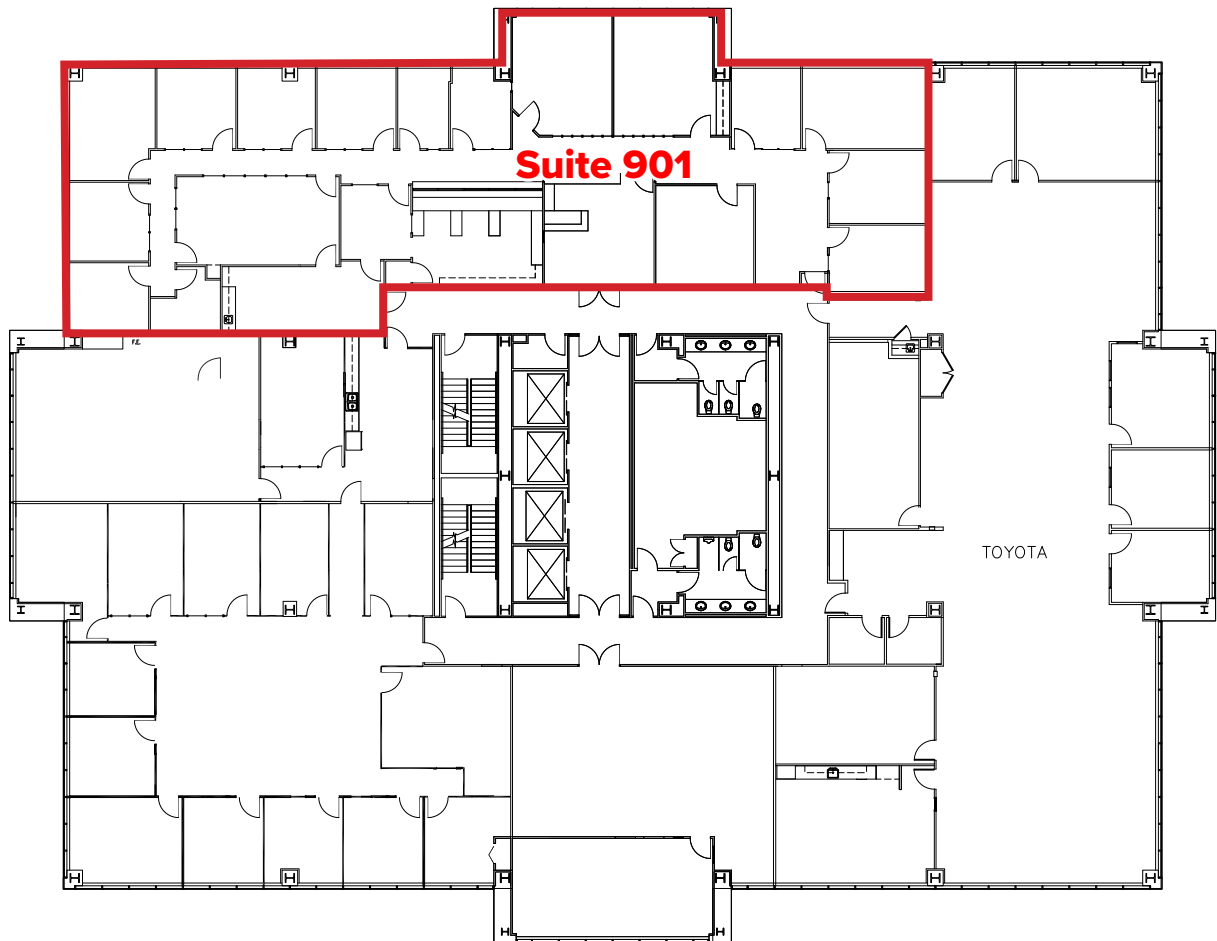
Direct: 225-201-0142 | smacdonald@stirlingprop.com

8550 United Plaza Blvd., Ste. 101, Baton Rouge, LA, 70809

The foregoing is solely for information purposes and is subject to change without notice. Stirling Properties makes no representations or warranties regarding the properties or information herein including but not limited to any and all images pertaining to these properties. It is the obligation of each purchaser/lessee to investigate the condition and attributes of the properties and to verify the accuracy of the foregoing information to the extent such purchaser/lessee deems necessary. Also subject to errors, omissions, changes in terms and conditions, prior sale, lease or withdrawal, without notice. 10/25

Available For Lease - Ninth Floor

Suite 901 - 5,533 SF



SCOTT MACDONALD, SIOR

Direct: 225-201-0142 | smacdonald@stirlingprop.com

8550 United Plaza Blvd., Ste. 101, Baton Rouge, LA, 70809

The foregoing is solely for information purposes and is subject to change without notice. Stirling Properties makes no representations or warranties regarding the properties or information herein including but not limited to any and all images pertaining to these properties. It is the obligation of each purchaser/lessee to investigate the condition and attributes of the properties and to verify the accuracy of the foregoing information to the extent such purchaser/lessee deems necessary. Also subject to errors, omissions, changes in terms and conditions, prior sale, lease or withdrawal, without notice. 10/25