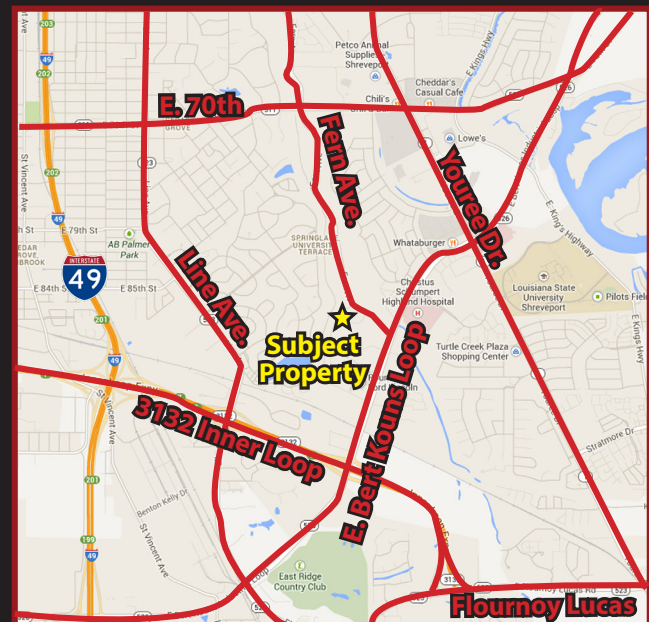




SOUTHEAST SHREVEPORT OFFICE FOR SALE OR LEASE

8654 BUSINESS PARK DRIVE, SHREVEPORT, LA 71105

- 3,478 SF two-story office building
- Built in 2007
- Located in the Pierre Place subdivision on Business Park Drive
- Can be demised for multiple tenants w/ two separate entrances
- HOA maintains landscaping, parking/common areas
- Located between Bert Kouns Industrial Loop and E. 70th Street in a highly desirable area consisting of retail, professional and medical offices
- Offered at \$625,000 or \$17.50 NNN



For more information, contact:

Claire Childs, CCIM | 318.222.2244 | cchilds@vintagerealty.com

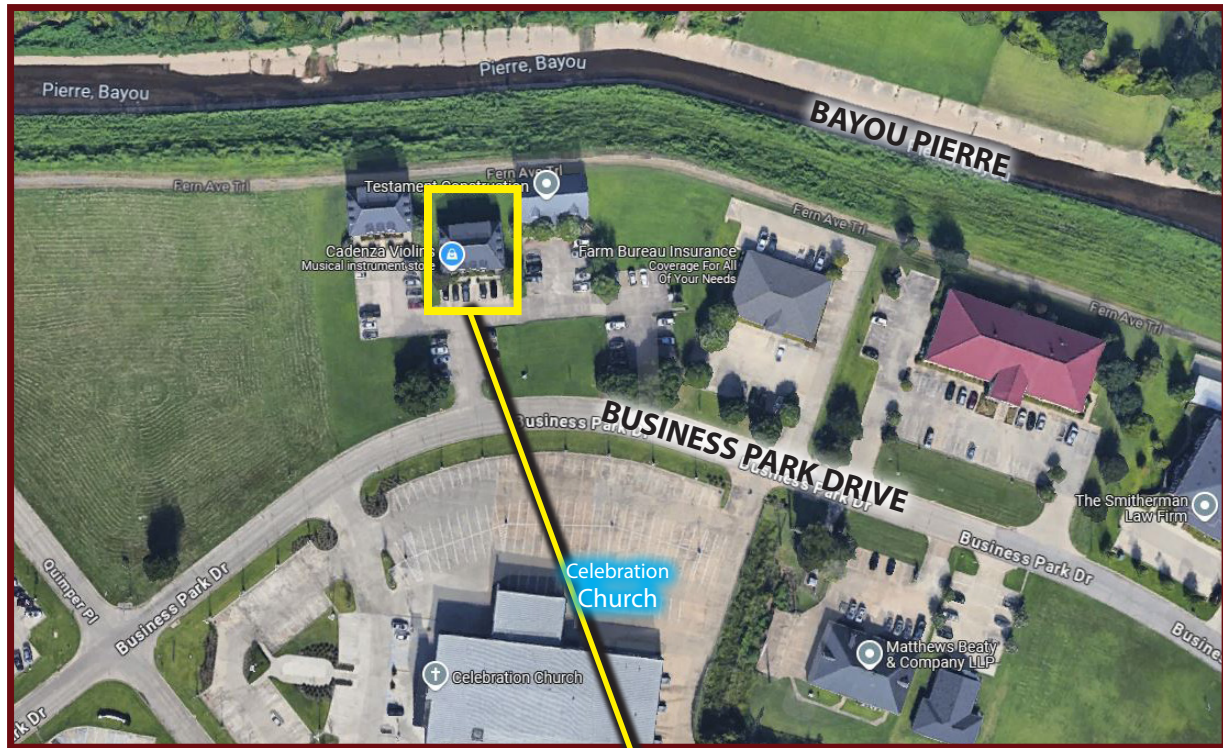
G. Archer Frierson III, CCIM, SIOR | 318.222.2244 | gfrierson@vintagerealty.com

ALL INFORMATION CONTAINED HEREIN IS BELIEVED TO BE ACCURATE, BUT IS NOT WARRANTED AND NO LIABILITY OF ERRORS OR OMISSIONS IS ASSURED BY EITHER THE PROPERTY OWNER OR VINTAGE REALTY COMPANY OR ITS AGENTS AND EMPLOYEES. PRICES AS STATED HEREIN AND PRODUCT AVAILABILITY IS SUBJECT TO CHANGE AND/OR SALE OR LEASE WITHOUT PRIOR NOTICE, AND ALL SIZES AND DIMENSIONS ARE SUBJECT TO CORRECTION. REV 9/2025



SE SHREVEPORT OFFICE FOR SALE OR LEASE

8654 BUSINESS PARK DRIVE
SHREVEPORT, LA 71105



For More Information Contact:

Claire Childs, CCIM | 318.222.2244 | cchilds@vintagerealty.com

G. Archer Frierson III, CCIM, SIOR | 318.222.2244 | gfrierson@vintagerealty.com

ALL INFORMATION CONTAINED HEREIN IS BELIEVED TO BE ACCURATE, BUT IS NOT WARRANTED AND NO LIABILITY OF ERRORS OR OMISSIONS IS ASSURED BY EITHER THE PROPERTY OWNER OR VINTAGE REALTY COMPANY OR ITS AGENTS AND EMPLOYEES. PRICES AS STATED HEREIN AND PRODUCT AVAILABILITY IS SUBJECT TO CHANGE AND/OR SALE OR LEASE WITHOUT PRIOR NOTICE, AND ALL SIZES AND DIMENSIONS ARE SUBJECT TO CORRECTION. 9/2025

SE SHREVEPORT OFFICE FOR SALE OR LEASE

8654 BUSINESS PARK DRIVE
SHREVEPORT, LA 71105



For More Information Contact:

Claire Childs, CCIM | 318.222.2244 | cchilds@vintagerealty.com

G. Archer Frierson III, CCIM, SIOR | 318.222.2244 | gfrierson@vintagerealty.com

ALL INFORMATION CONTAINED HEREIN IS BELIEVED TO BE ACCURATE, BUT IS NOT WARRANTED AND NO LIABILITY OF ERRORS OR OMISSIONS IS ASSURED BY EITHER THE PROPERTY OWNER OR VINTAGE REALTY COMPANY OR ITS AGENTS AND EMPLOYEES. PRICES AS STATED HEREIN AND PRODUCT AVAILABILITY IS SUBJECT TO CHANGE AND/OR SALE OR LEASE WITHOUT PRIOR NOTICE, AND ALL SIZES AND DIMENSIONS ARE SUBJECT TO CORRECTION. 9/2025