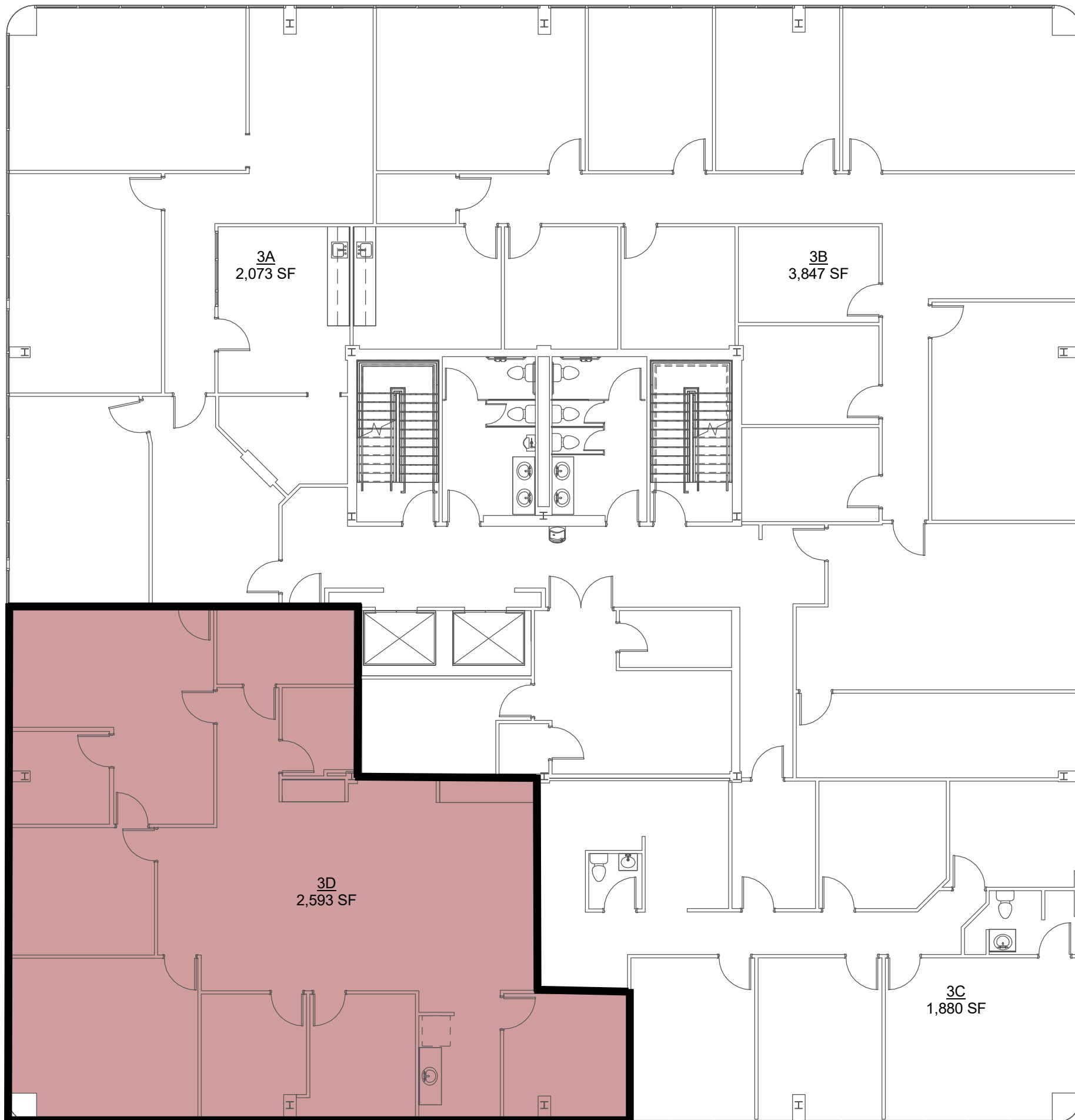


| NAME | USABLE | COMMON (16%) | RENTABLE SF |
|----------------|----------|--------------|-------------|
| Suite 300 (3A) | 1,787 SF | 286 SF | 2,073 SF |
| 3B | 3,316 SF | 531 SF | 3,847 SF |
| Suite 304 (3C) | 1,621 SF | 259 SF | 1,880 SF |
| Suite 310 (3D) | 2,236 SF | 358 SF | 2,593 SF |



1 THIRD FLOOR PLAN

SCALE: 3/32" = 1'-0"

ZILER ARCHITECTS
A PROFESSIONAL ARCHITECTURAL CORPORATION
JAMES O. ZILER, ARCHITECT
SEAN R. PRIMEAUX, ARCHITECT
101 Calco Boulevard
Lafayette, Louisiana 70503
Ph: 337-269-6326
10610 Florida Boulevard
Walker, Louisiana 70785
Ph: 225-424-6990
www.zilerarchitects.net

DOCUMENTS PREPARED BY ZILER ARCHITECTS ARE INSTRUMENTS OF THE ARCHITECT'S SERVICE FOR USE SOLELY WITH RESPECT TO THIS PROJECT. THE ARCHITECT SHALL RETAIN ALL COMMON LAW, STATUTORY AND OTHER RESERVED RIGHTS, INCLUDING THE COPYRIGHT. THEY ARE NOT TO BE USED BY THE CONTRACTOR OR ANY SUBCONTRACTOR, MATERIAL OR EQUIPMENT SUPPLIERS OR ANYONE FOR OTHER PROJECTS OR FOR ADDITIONS TO THIS PROJECT OUTSIDE THE SCOPE OF THE WORK WITHOUT THE SPECIFIC WRITTEN CONSENT OF ZILER ARCHITECTS.

RENOVATIONS FOR:
LAHAYE CENTER
201 RUE IBERVILLE
LAFAYETTE, LOUISIANA 70508

NOT FOR CONSTRUCTION

| | |
|-------------|---------------------|
| DATE ISSUED | 09/29/25 |
| REVISED | - |
| PLOT DATE | 09/29/25 9:18:38 AM |
| DRAWN BY | GMB |
| CHECKED BY | SRP |
| PROJECT NO. | 2506 |
| SHEET NO. | AC03.1 |
| | OF 16 |