

# 2.68 ACRES NEXT TO BUFFALO WILD WINGS

Pont Des Mouton Avenue, Lafayette, LA

# FOR SALE



## Available

- 2.68 Acres

## Price

- \$1,167,408

## Traffic Count (ADT 2015)

- Pont Des Mouton - 6K
- Interstate 49 - 56K

## Property Information

- Type: Vacant Land
- Zoning: Light Industrial
- Utilities: Available

## 2016 Demographics

### Population:

3,828 (1 mile)  
36,337 (3 mile)  
87,718 (5 mile)

### Est. Household:

1,646 (1 mile)  
14,306 (3 mile)  
34,977 (5 mile)

### Average HH Income:

\$50,788 (1 mile)  
\$48,968 (3 mile)  
\$55,091 (5 mile)

Excellent I-49 frontage at the intersection of Pont Des Mouton Avenue. The site is directly adjacent to a Buffalo Wild Wings restaurant in an area of steady growth. This is a great opportunity for local and national retailers. All Utilities are at the site.



**Charles Cornay**

direct: 337-572-0234 / ccornay@stirlingprop.com

RETAIL BROKERS NETWORK



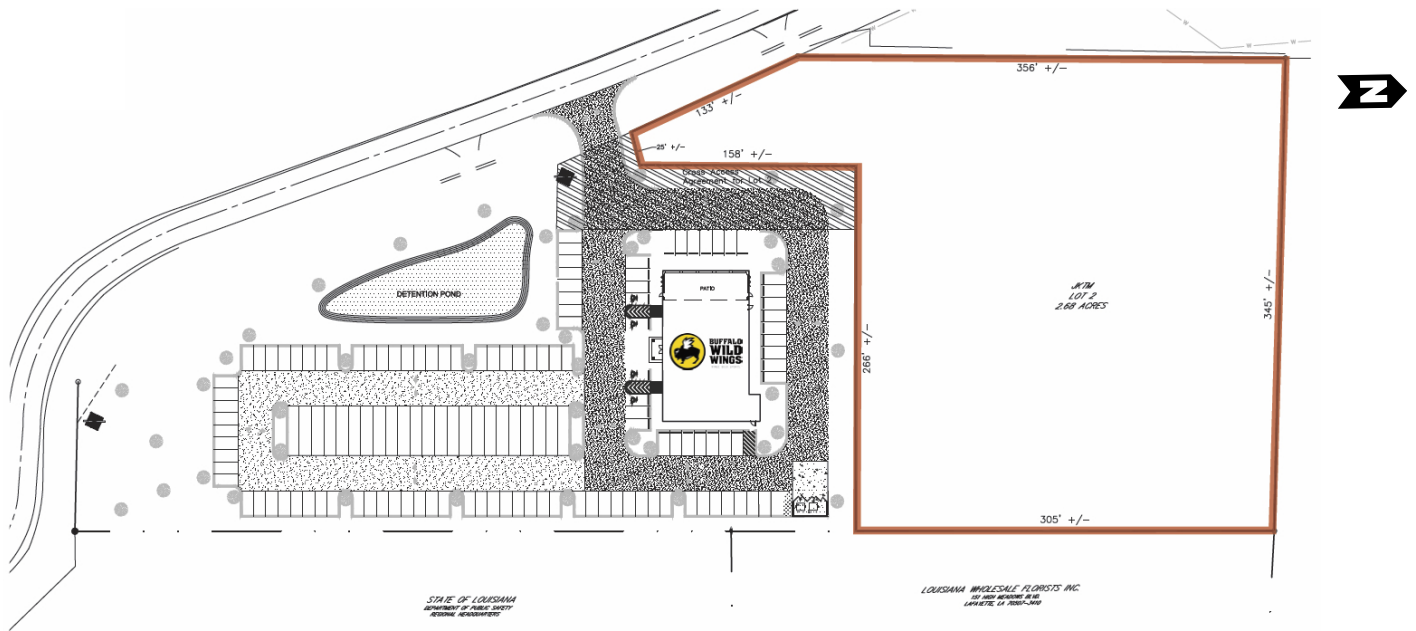
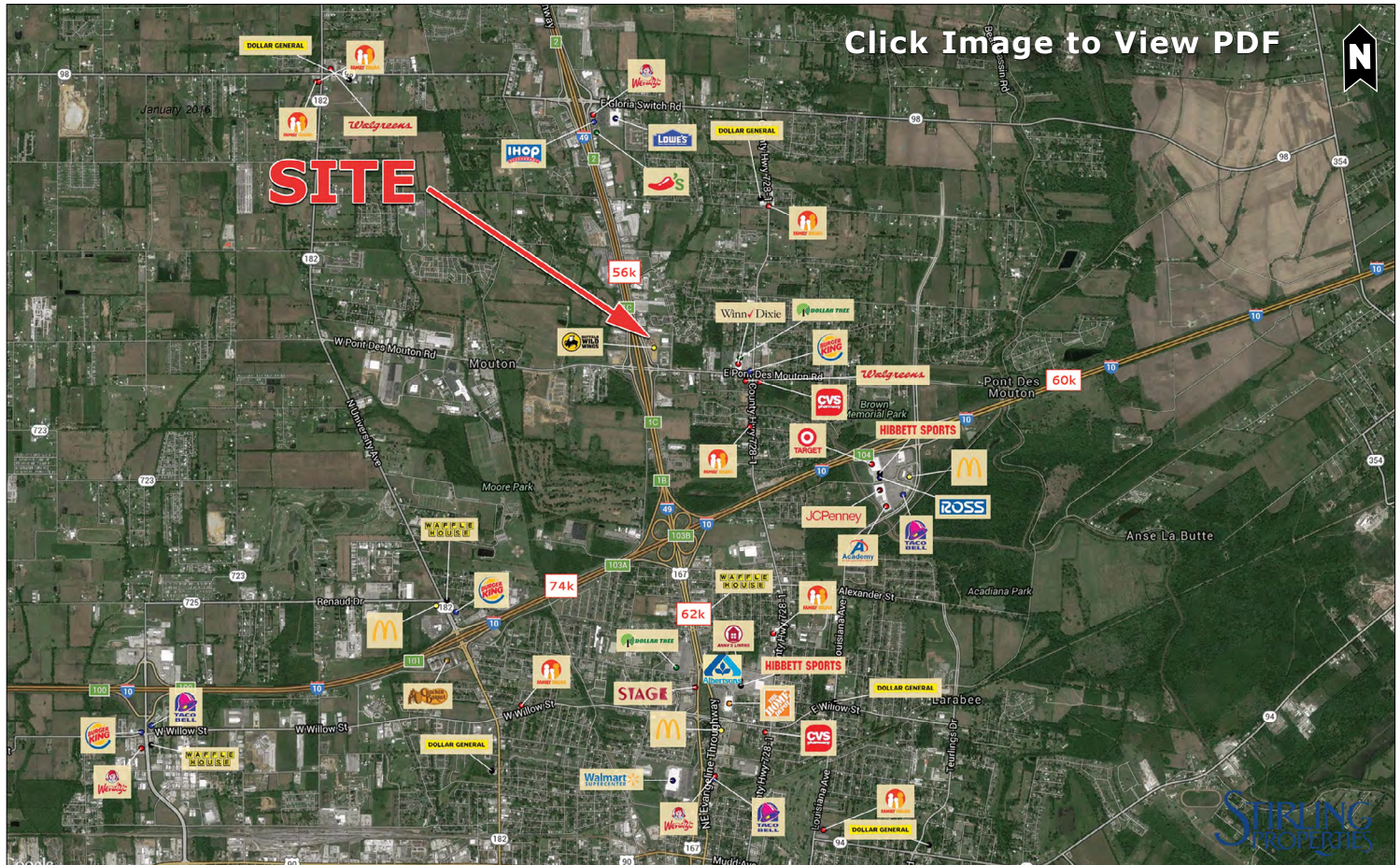
www.StirlingProperties.com



# 2.68 ACRES NEXT TO BUFFALO WILD WINGS

Pont Des Mouton Avenue, Lafayette, LA

## FOR SALE



RETAIL BROKERS NETWORK



www.StirlingProperties.com

The foregoing is solely for information purposes and is subject to change without notice. Stirling Properties makes no representations or warranties regarding the properties or information herein including but not limited to any and all images pertaining to these properties. It is the obligation of each purchaser/lessee to investigate the condition and attributes of the properties and to verify the accuracy of the foregoing information to the extent such purchaser/lessee deems necessary. Also subject to errors, omissions, changes in terms and conditions, prior sale, lease or withdrawal, without notice. 4/16