

Location Map



Contact
Melissa Harrington

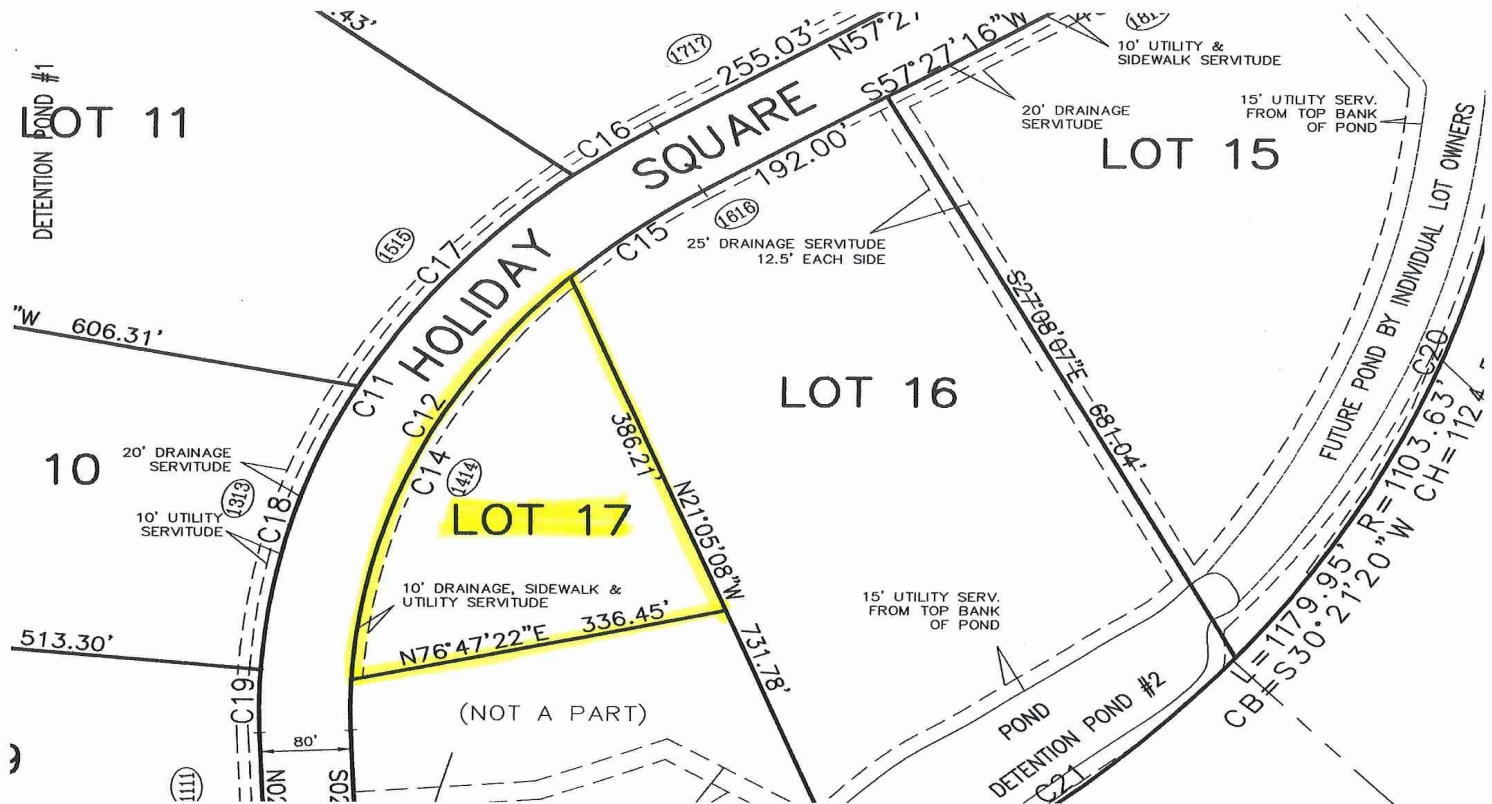


Office – 985.626.5695
Direct - 504.782.0808
mglass@latterblum.com

Compass
1151 N Causeway Blvd
Mandeville, LA 70471

COMPASS

The information contained herein was obtained from sources deemed reliable, but Latter Blum Inc does not guarantee its accuracy



Contact
Melissa Harrington

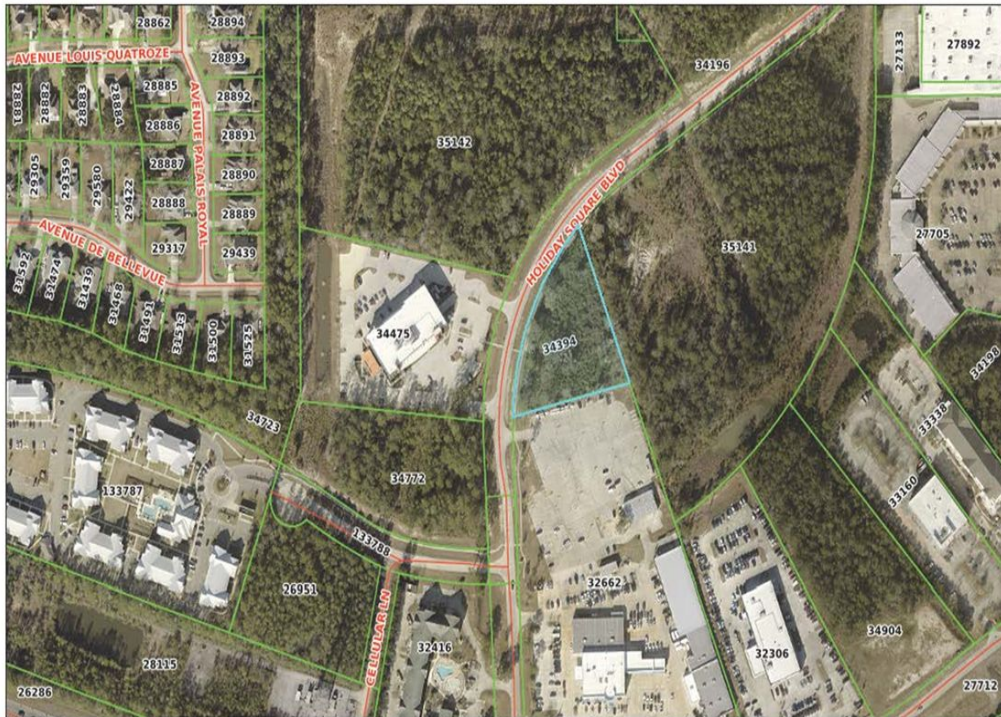


Office – 985.626.5695
 Direct - 504.782.0808
mglass@latterblum.com

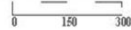
Compass
 1151 N Causeway Blvd
 Mandeville, LA 70471

COMPASS

Geoportal Map



DISCLAIMER: Every reasonable effort has been made to assure the accuracy of the parcel and base map data presented. The St. Tammany Parish Assessor makes no warranties, express or implied, regarding the completeness, reliability or suitability of the site data and assumes no liability associated with the use or misuse of said data. The parcel data on the base map is used to locate, identify and inventory parcels of land in St. Tammany Parish for assessment purposes only and is not to be used or interpreted as a legal survey or legal document. Additional data layers not originating in the Assessor's Office are also presented for informational purposes only. Before proceeding in any legal matter, all data should be verified by contacting the appropriate county or municipal office.



1.8 Acre Parcel on Holiday Square Blvd

PUD Zoning. Please call for complete list of uses available.

Easy access to I12, Hwy 190, The Causeway. Located next to Globalstar Corp., Honda of Covington, Hotels, Shopping, The Collins Apartments.

Listing Price \$667,000

Contact
Melissa Harrington

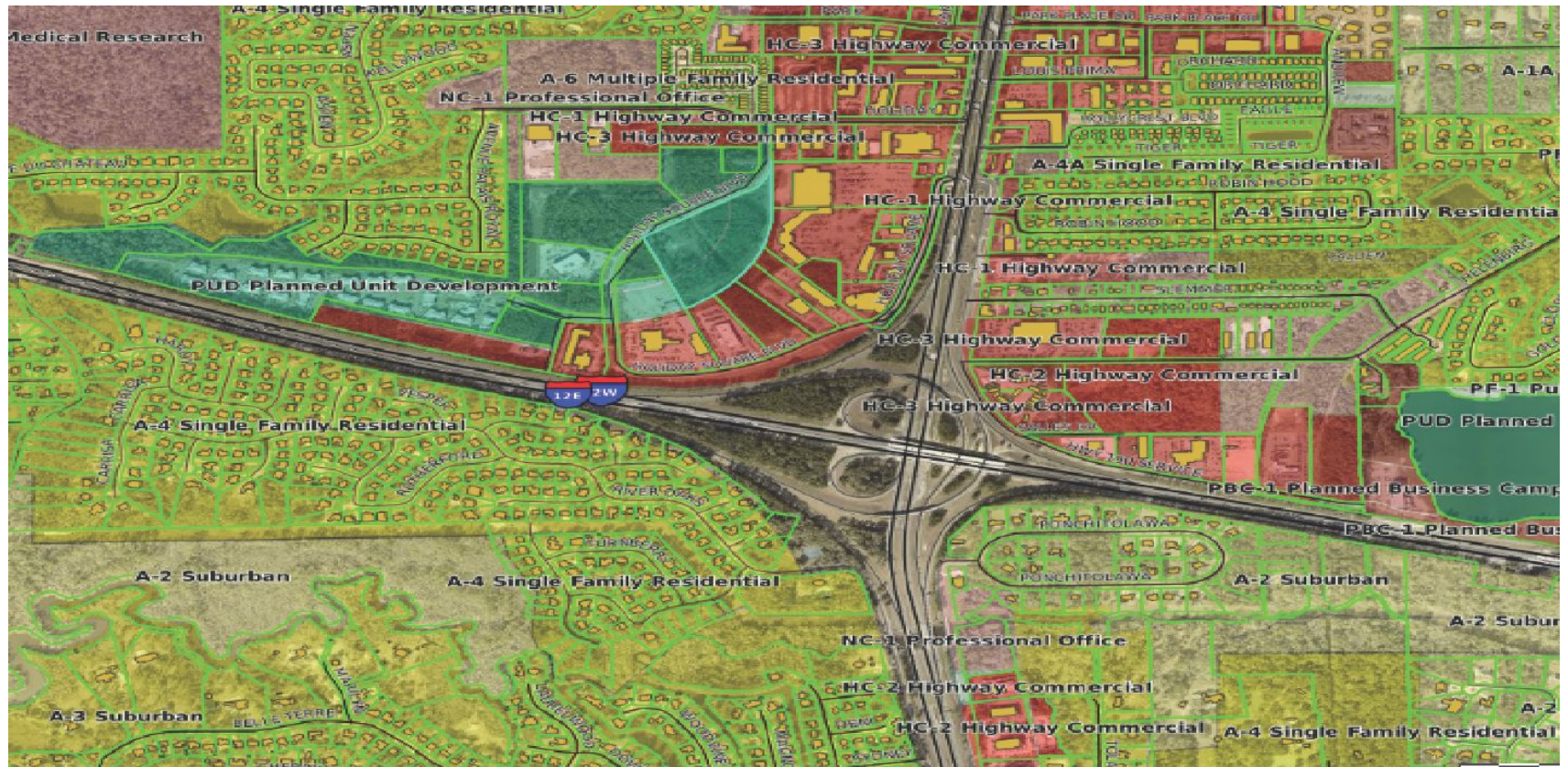


Office – 985.626.5695
Direct - 504.782.0808
mglass@latterblum.com

Compass
1151 N Causeway Blvd
Mandeville, LA 70471

COMPASS

Zoning Map - PUD



Contact
Melissa Harrington



Office – 985.626.5695
Direct - 504.782.0808
mglass@latterblum.com

Compass
1151 N Causeway Blvd
Mandeville, LA 70471

COMPASS

The information contained herein was obtained from sources deemed reliable, but Latter Blum Inc does not guarantee its accuracy