

1.8 Acre Versailles Business Park

FOR SALE

Property Information

- ♦ Development Opportunity Available!! 1.80 acre Parcel located in Versailles Business Park. Zoned Planned Unit Development. Convenient and Easy Access for Hwy 190 and I1, I 12 and The Causeway. Located close to Globalstar Corp., Hotels, The Collins Apt. Complex, Honda and Shopping. Minutes from Causeway Bridge.



LOCATION

- ♦ Versaille Business Park, Covington

LAND SIZE

- 1.8 Acre (78,408sqft)

TRAFFIC COUNT (2015)

- 61,490 (Hwy 190)

PRICE

- \$667,000



Melissa Harrington

Direct 504.782.0808

Fax—985.246.3447

Office—985.626.5687

Email—harringtonmelissa23@gmail.com

www. <https://www.latter-blum.com/agent-bio/>

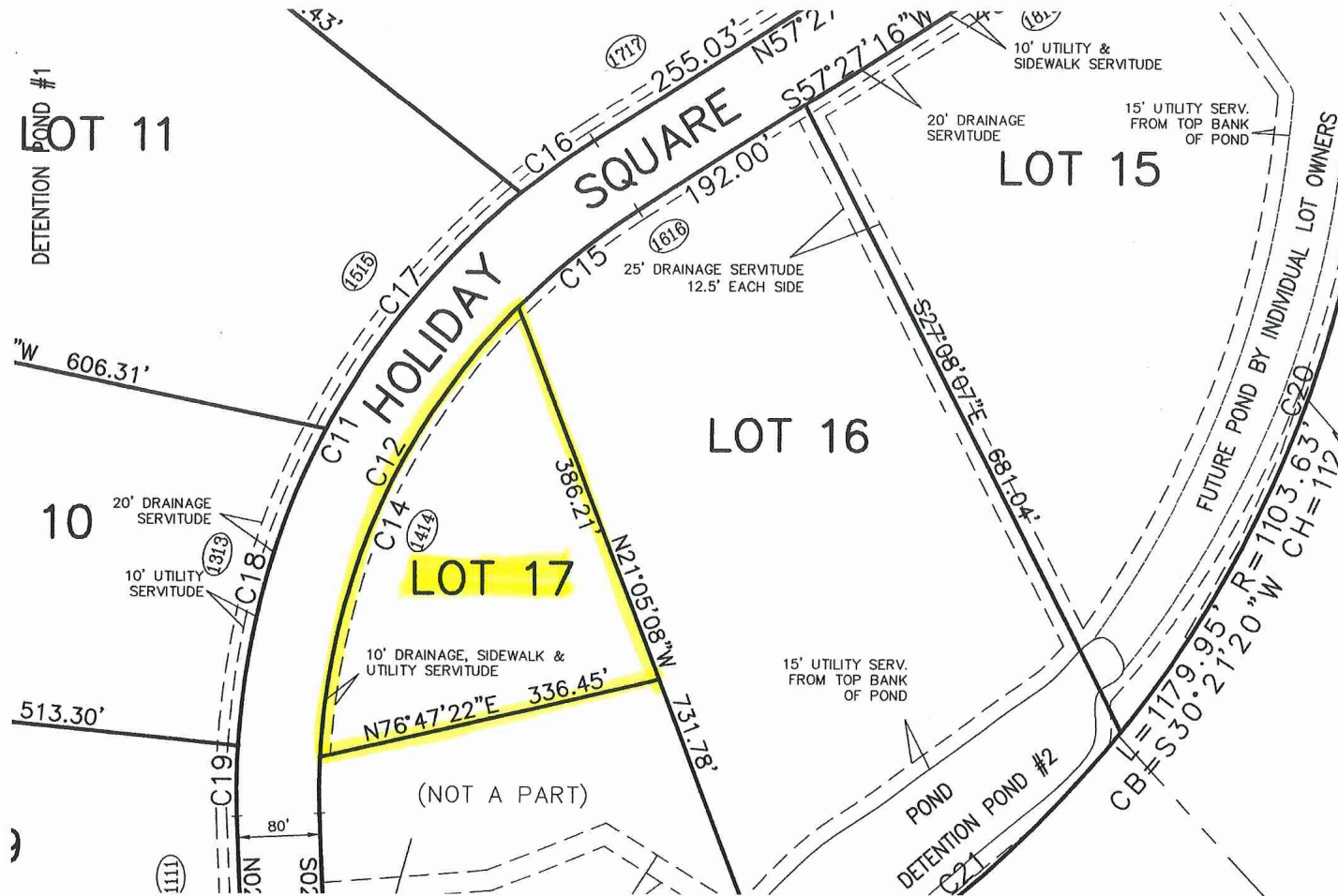
LATTER & BLUM
Since 1916 INC/REALTORS®



Licensed in Louisiana. Latter Blum Inc, ERA powered makes no representations or warranties regarding the properties discussed herein. This information is subject to errors, omissions, changes, on terms and conditions, prior sale, lease, or withdrawal, without notice. Each ERA powered company is independently owned and operated. Mandeville La 11/2015.

1.8 Acre Parcel

Survey



1.8 Acre Parcel

Aerial

