

Development For Sale Vacant Land

79 Acres | \$5/SF



Frontage Rd S & LA 101

Iowa, LA 70647

Property Highlights

- Multiple property uses available offering a wide range of possibilities. Some Permitted uses Include: Small Commercial, Light Industrial, Lay Down Yards, Businesses including Retail and Wholesale, Restaurants, Retail Manufacturing, and Business Park
- Parish approval for Mobile Home Park, Apartment Complex, or Residential Subdivision
- Will subdivide
- Shovel ready
- Water Retention Ponds in place
- Jeff Davis Parish is located between Lake Charles and Lafayette. Near several major highway networks, airports, railways and waterways, making distribution in and out of the area convenient.

For more information

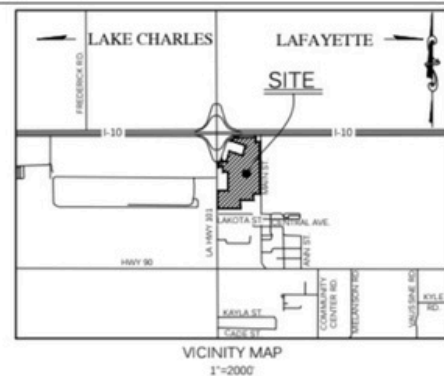
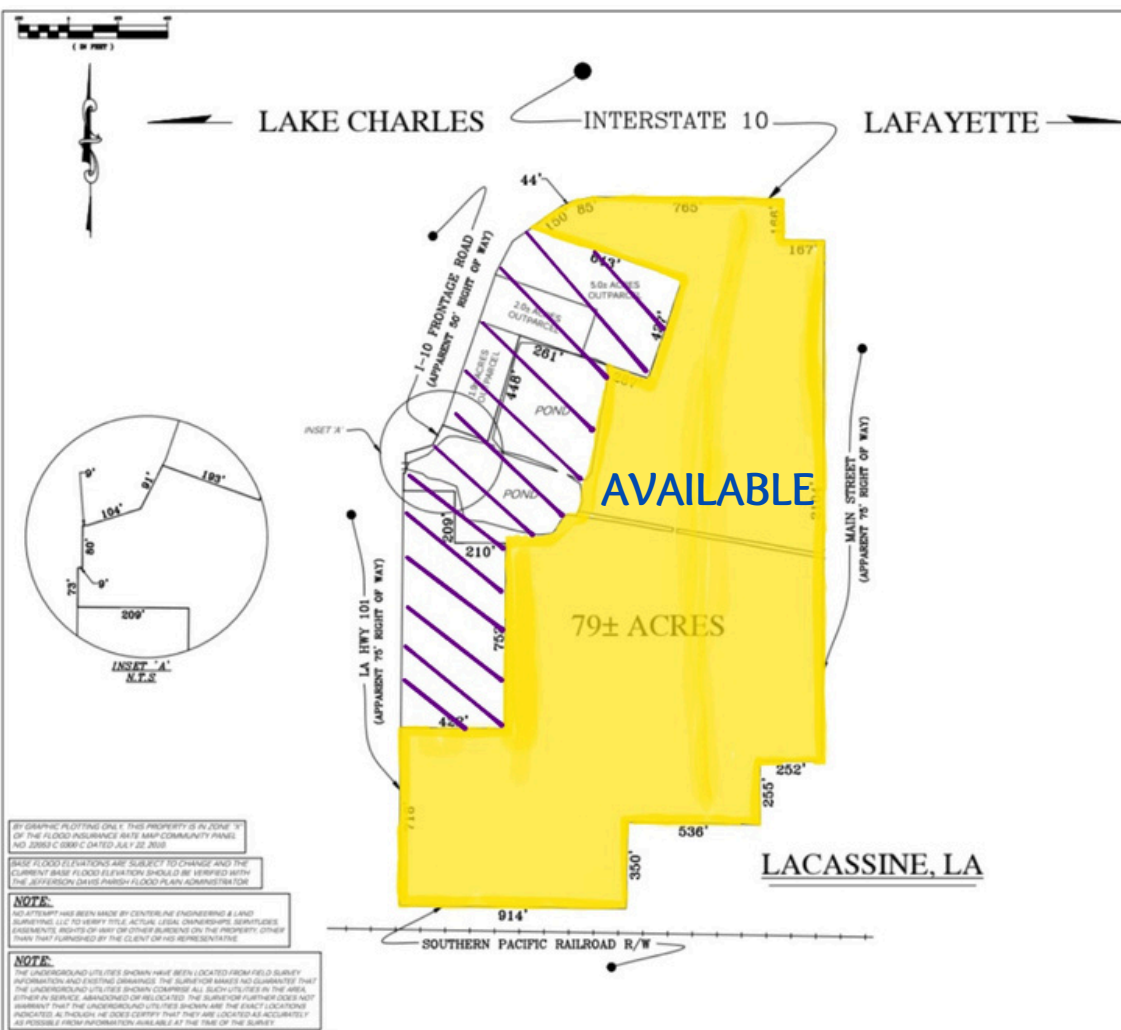
Matt Redd, CCIM, SIOR, CRE

O: 337 310 0605 C: 337 489 9666

mattredd@reddproperties.com

NO WARRANTY OR REPRESENTATION, EXPRESS OR IMPLIED, IS MADE AS TO THE ACCURACY OF THE INFORMATION CONTAINED HEREIN, AND THE SAME IS SUBMITTED SUBJECT TO ERRORS, OMISSIONS, CHANGE OF PRICE, RENTAL OR OTHER CONDITIONS, PRIOR SALE, LEASE OR FINANCING, OR WITHDRAWAL WITHOUT NOTICE, AND OF ANY SPECIAL LISTING CONDITIONS IMPOSED BY OUR PRINCIPALS NO WARRANTIES OR REPRESENTATIONS ARE MADE AS TO THE CONDITION OF THE PROPERTY OR ANY HAZARDS CONTAINED THEREIN ARE ANY TO BE IMPLIED. LICENSED IN LOUISIANA.

1424 Ryan Street
Lake Charles, LA 70601
337 310 0605
reddproperties.com



SALES MAP OF 79± ACRES

LOCATED IN SECTION 30, T9S-R5W
SOUTHWESTERN LAND DISTRICT,
JEFFERSON DAVIS PARISH, LOUISIANA
FOR
BILLWOOD SMITH, III

CENTERLINE
ENGINEERING & LAND SURVEYING, LLC
200 Government St., Ste. 200 Baton Rouge, LA 70802
(225) 432-8848 centerlineusa.com

