



CLASS A OFFICE
FOR LEASE

CitiPlace

CENTRE I

*2600 CITIPLACE COURT
BATON ROUGE, LA 70808*

CBRE

CITIPLACE CENTRE

2600 CITIPLACE COURT
BATON ROUGE, LA 70808

CitiPlace Centre I is a five-story, Class A office building prominently located at 2600 Citiplace Court in the heart of Baton Rouge's highly desirable Acadian/College corridor. Constructed in 2001, the building totals 82,023 square feet of net rentable area, with a strong tenant mix led by long-term federal and national tenants. CitiPlace Centre offers excellent visibility from I-10, monument and façade signage options.

Rental Rate: \$23 PSF



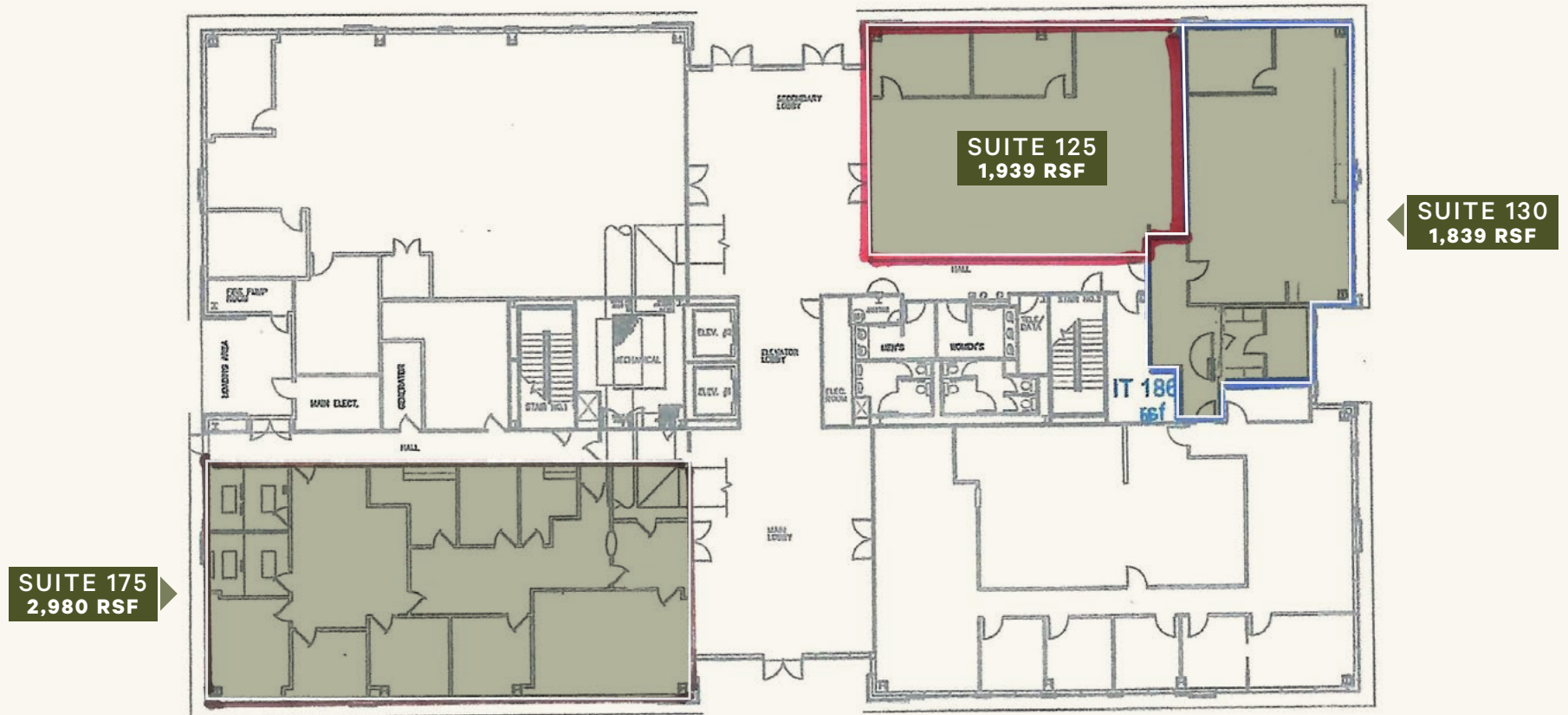
82,023 SFR
Net Rentable Area

2001
Year Built

4 per 1,000
Parking (as part of a PUD)

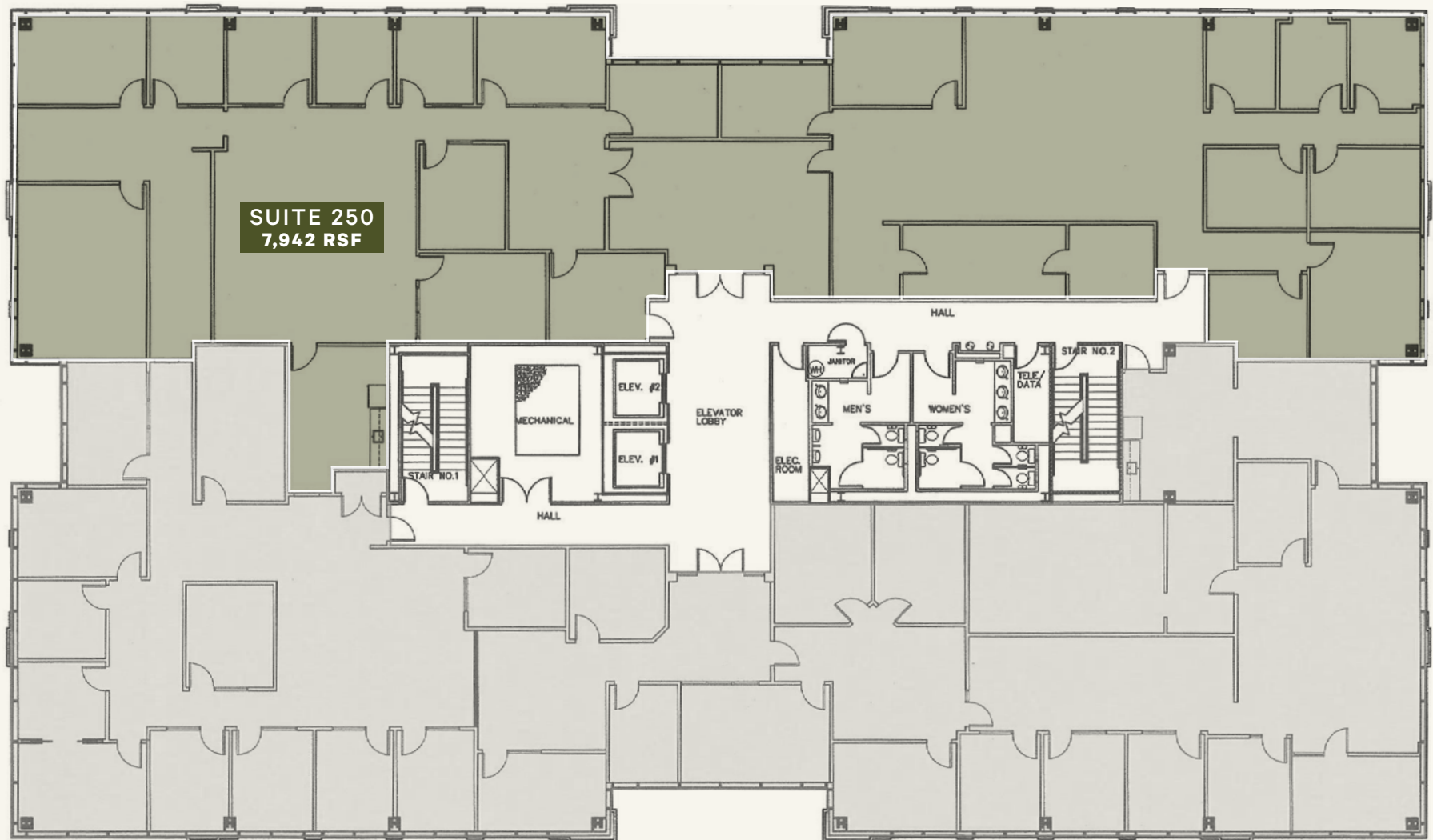
1ST FLOOR

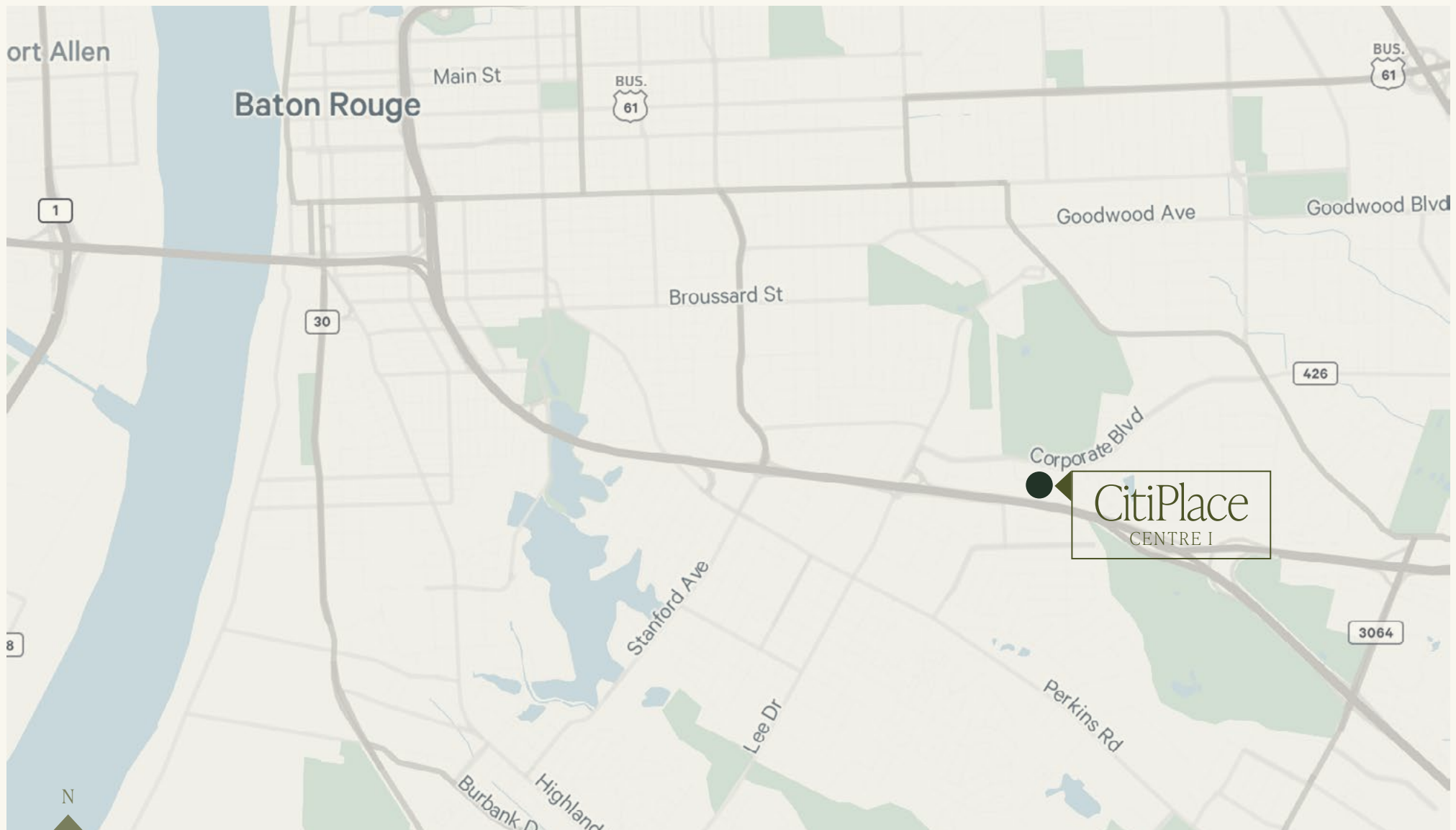
FLOOR PLAN



2ND FLOOR

FLOOR PLAN





WITHIN 1-MILE

29
restaurants & grocery

14
hotels

2
fitness

CITYPLACE CENTRE I

CLASS A OFFICE
FOR LEASE

CitiPlace

CENTRE I

*2600 CITIPLACE COURT
BATON ROUGE, LA 70808*



JONANN STUTZMAN
Vice President
C 225 445 0473
jonann.stutzman@cbre.com

CBRE

www.cbre.com
Office: 225-952-1255
10101 Siegen Lane, Bldg 1
Baton Rouge, LA 70810

© 2025 CBRE, Inc. All rights reserved. This information has been obtained from sources believed reliable but has not been verified for accuracy or completeness. CBRE, Inc. makes no guarantee, representation or warranty and accepts no responsibility or liability as to the accuracy, completeness, or reliability of the information contained herein. You should conduct a careful, independent investigation of the property and verify all information. Any reliance on this information is solely at your own risk. CBRE and the CBRE logo are service marks of CBRE, Inc. All other marks displayed on this document are the property of their respective owners, and the use of such marks does not imply any affiliation with or endorsement of CBRE. Photos herein are the property of their respective owners. Use of these images without the express written consent of the owner is prohibited.