

9405 Burbank Dr
Baton Rouge, LA 70810

PROPERTY SUMMARY



Property Highlights:

- 1.45 Acres on Burbank Drive
- Located near the intersection of Burbank and Gardere Lane
- Less than a quarter mile from the Burbank and Staring Lane intersection and less than a mile from the Burbank and Bluebonnet Blvd. intersection
- Traffic counts exceeding 18,000 vehicles per day
- 200' of frontage on Burbank
- Near national retailers and quick-service restaurants such as Walmart, Albertsons, Dollar General, Smoothie King, O'Reilly Auto Parts, McDonalds, Burger King, and Wendy's
- Flood Zone X

Offering Summary

Sale Price:	\$999,999
Lot Size:	1.45 Acres

Demographics	0.3 Miles	0.5 Miles	1 Mile
Total Households	674	1,573	5,155
Total Population	1,702	4,017	13,229
Average HH Income	\$63,887	\$60,641	\$68,095

Jessie Babcock
225.772.8090
jbabcock@beaubox.com

Hayden Clark
225.223.7990
hclark@beaubox.com

Broker of Record, Beau J. Box; Licensed by the Louisiana Real Estate Commission, Mississippi Real Estate Commission, Alabama Real Estate Commission and Florida Real Estate Commission, USA. This information has been secured from sources we believe to be reliable, but we make no representations or warranties, expressed or implied, as to the accuracy of the information. References to square footage or age are approximate. Buyer must verify the information and bears all risk for any inaccuracies. © Beau Box Commercial Real Estate. 5500 Bankers Avenue, Baton Rouge, LA 70808 | 225-237-3343. | February 27, 2025



9405 Burbank Dr
Baton Rouge, LA 70810

RETAILER MAP



Jessie Babcock

225.772.8090

jbabcock@beaubox.com

Hayden Clark

225.223.7990

hclark@beaubox.com

Broker of Record, Beau J. Box; Licensed by the Louisiana Real Estate Commission, Mississippi Real Estate Commission, Alabama Real Estate Commission and Florida Real Estate Commission, USA. This information has been secured from sources we believe to be reliable, but we make no representations or warranties, expressed or implied, as to the accuracy of the information. References to square footage or age are approximate. Buyer must verify the information and bears all risk for any inaccuracies. © Beau Box Commercial Real Estate. 5500 Bankers Avenue, Baton Rouge, LA 70808 | 225-237-3343. | February 27, 2025



9405 Burbank Dr
Baton Rouge, LA 70810

ADDITIONAL PHOTOS



Jessie Babcock
225.772.8090
jbabcock@beaubox.com

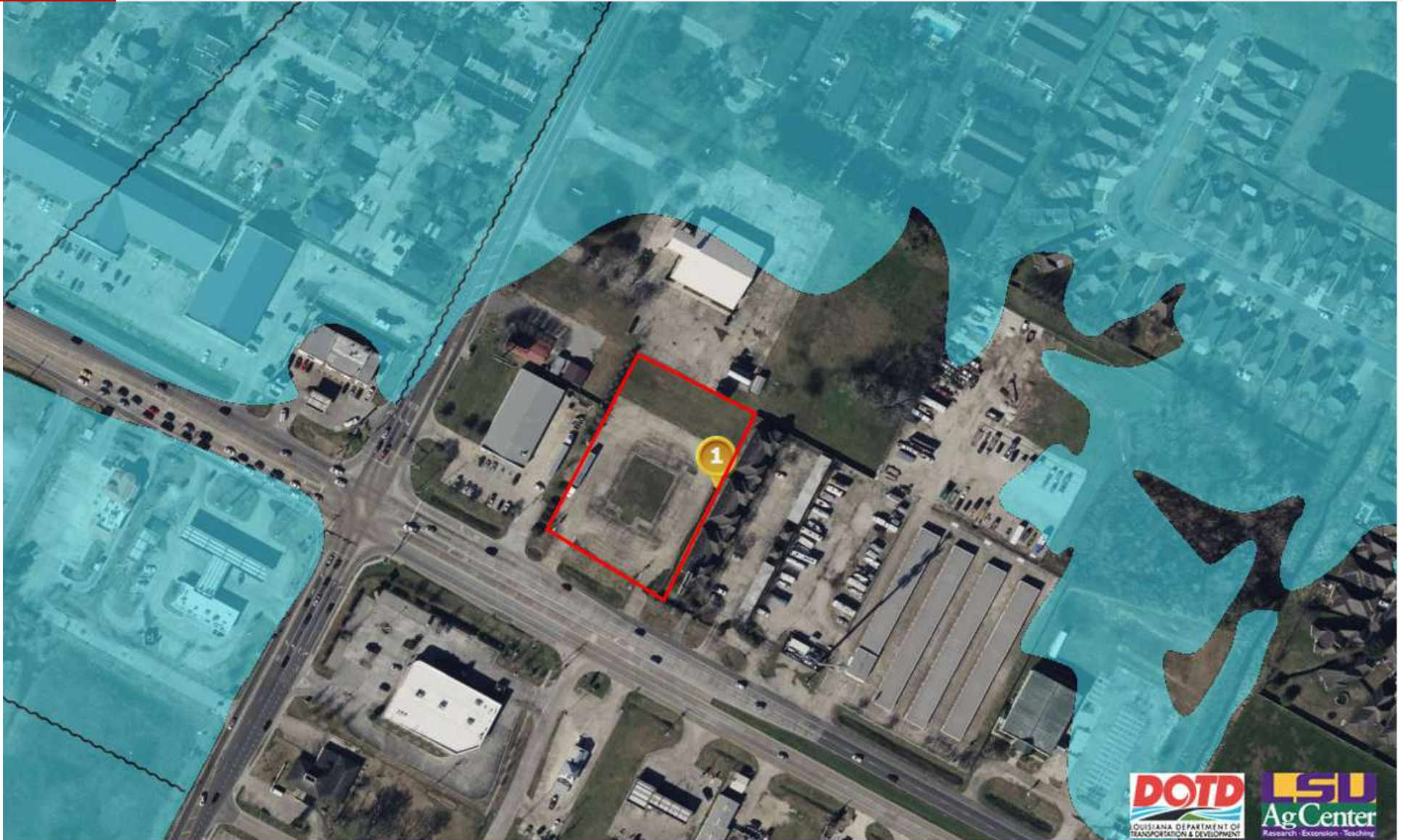
Hayden Clark
225.223.7990
hclark@beaubox.com

Broker of Record, Beau J. Box; Licensed by the Louisiana Real Estate Commission, Mississippi Real Estate Commission, Alabama Real Estate Commission and Florida Real Estate Commission, USA. This information has been secured from sources we believe to be reliable, but we make no representations or warranties, expressed or implied, as to the accuracy of the information. References to square footage or age are approximate. Buyer must verify the information and bears all risk for any inaccuracies. © Beau Box Commercial Real Estate. 5500 Bankers Avenue, Baton Rouge, LA 70808 | 225-237-3343. | February 27, 2025



9405 Burbank Dr
Baton Rouge, LA 70810

FLOOD MAP



Jessie Babcock

225.772.8090

jbabcock@beaubox.com

Hayden Clark

225.223.7990

hclark@beaubox.com

Broker of Record, Beau J. Box; Licensed by the Louisiana Real Estate Commission, Mississippi Real Estate Commission, Alabama Real Estate Commission and Florida Real Estate Commission, USA. This information has been secured from sources we believe to be reliable, but we make no representations or warranties, expressed or implied, as to the accuracy of the information. References to square footage or age are approximate. Buyer must verify the information and bears all risk for any inaccuracies. © Beau Box Commercial Real Estate. 5500 Bankers Avenue, Baton Rouge, LA 70808 | 225-237-3343. | February 27, 2025

