

FOR SALE, LEASE, OR BUILD TO SUIT 1-12 ACRES



12 ACRES WITH INTERSTATE VISIBILITY!

- Great location at the intersection of I-10 and Oak Harbor Blvd
- Adjacent to the New Middendorf's and Bayou Country Village
- Part of PUD and Zoned for Interstate Commercial
- Uses include Retail, Multi-Family, Hotel, Medical, Food Store, Convenience Store, and Service Stations

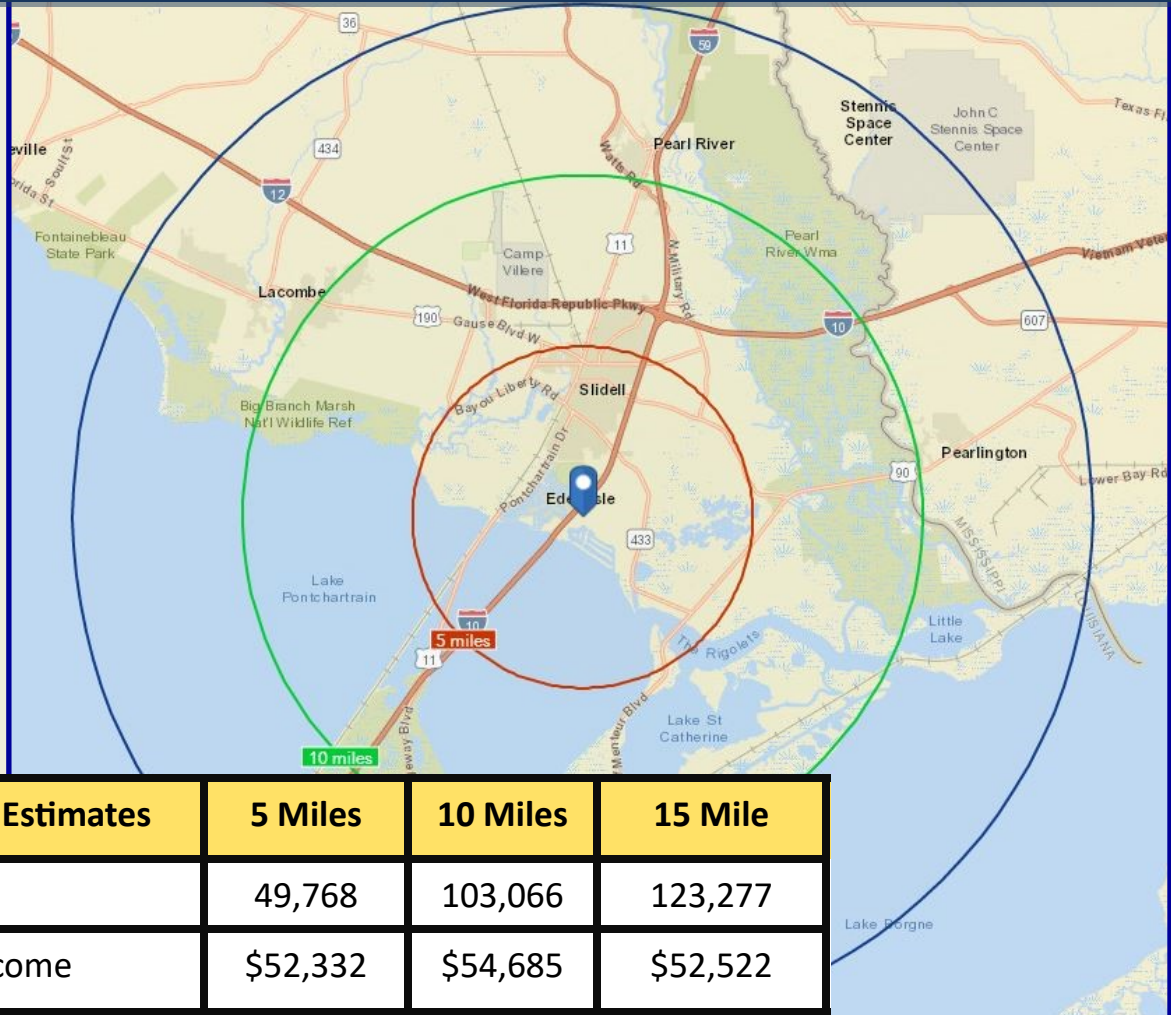
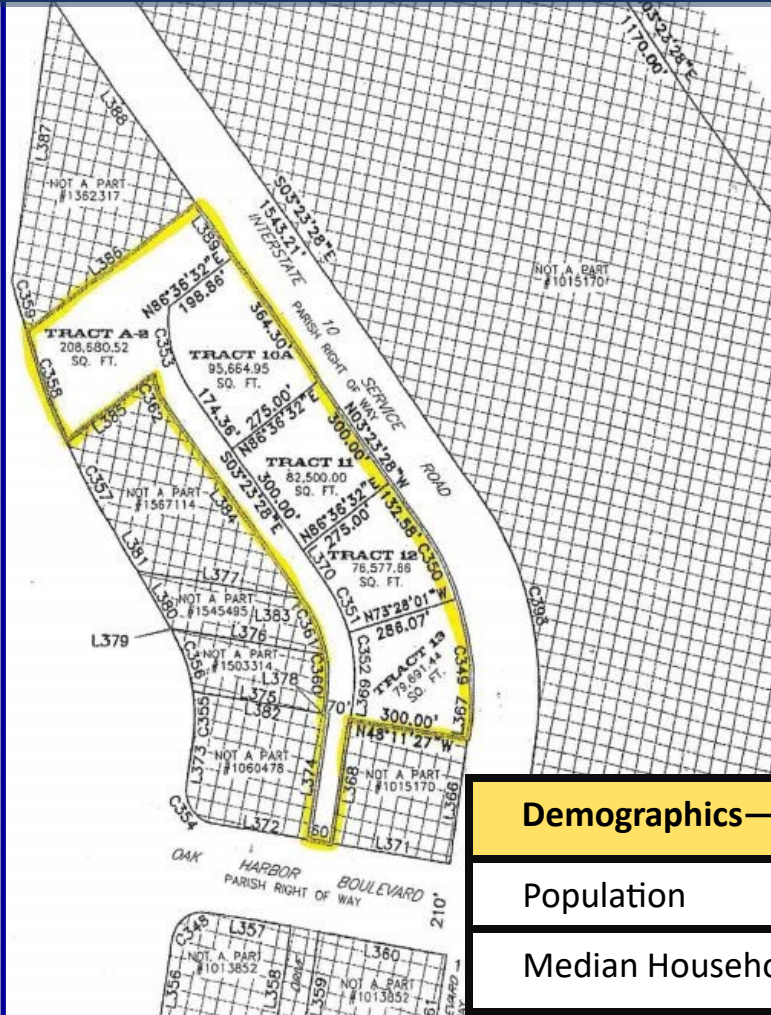
WWW.GSRES.COM



Beth Lemonier
blemonier@gsres.com
Cell: 985-259-5199
Office: 985-792-4385

- ◆ **PROJECT MANAGEMENT**
- ◆ **BROKERAGE**
- ◆ **PROPERTY MANAGEMENT**

FOR SALE, LEASE, OR BUILD TO SUIT 1-12 ACRES



Demographics—2018 Estimates	5 Miles	10 Miles	15 Mile
Population	49,768	103,066	123,277
Median Household Income	\$52,332	\$54,685	\$52,522

Beth Lemonier

Cell: 985-259-5199

Office: 985-792-4385

blemonier@gsres.com

Gulf States Real Estate Services, LLC makes no representations or warranties regarding the properties discussed herein. This information is subject to errors, omissions, changes in terms and conditions, prior sales, lease or withdrawal, without notice.
2/2019

- ◆ **PROJECT MANAGEMENT**
- ◆ **BROKERAGE**
- ◆ **PROPERTY MANAGEMENT**