

SPECIAL PURPOSE PROPERTY FOR
SALE
JANUARY 2026

1255 CAMELIA AVENUE

BAKER, LA

stirling





PROPERTY DESCRIPTION

1255 Camelia Avenue in Baker, Louisiana offers an excellent opportunity for a church, school, or community-focused organization seeking a large, well-maintained facility in a highly visible location. The 14,804 SF building is situated on approximately 1.49 acres and benefits from strong frontage along both Camelia Avenue and Texas Avenue, making it easy to access and within the Baker market.

The interior includes a spacious sanctuary/ assembly area, multiple classrooms and offices, a full commercial kitchen, and an on-site gymnasium. This combination of space allows for continued religious use or potential conversion to a variety of other institutional or community-oriented purposes such as private school, daycare, event space, or nonprofit center.

PROPERTY HIGHLIGHTS

- 14,804 SF versatile facility featuring a large sanctuary/assembly space along with multiple supporting areas throughout the building
- Includes a strong mix of interior improvements such as classrooms, offices, and meeting rooms, ideal for continued church use or community-oriented occupancy
- Equipped with a full commercial kitchen, offering functionality for events, gatherings, or institutional use
- Features on-site gymnasium/multi-purpose recreation space, providing flexibility for youth programs, sports, or large group activities

OFFERING SUMMARY

Sale Price:	\$820,000
Lot Size:	1.488 Acres
Building Size:	14,804 SF

stirling

1255 CAMELIA AVE

BAKER, LA 70714

Special Purpose Property For Sale



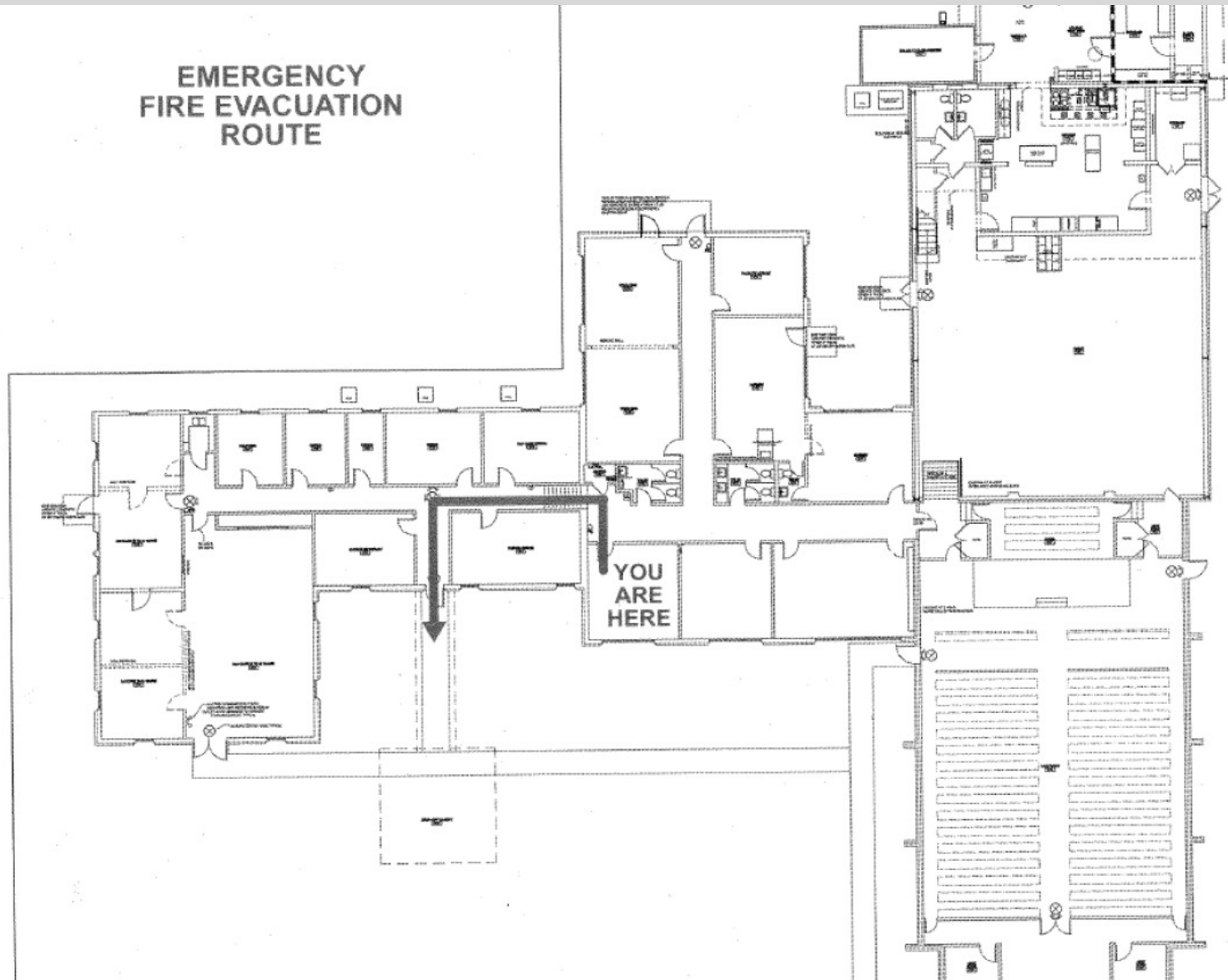
STIRLINGPROPERTIES.COM / f t i n

JOHN DEARMOND
Licensed in LA
225.202.4649
jdearmond@stirlingprop.com

JUSTIN LANGLOIS, CCIM, SIOR
Licensed in LA
225.329.0287
jlanglois@stirlingprop.com

Member of  /3
RETAIL BROKERS NETWORK

The foregoing is solely for information purposes and is subject to change without notice. Stirling Properties makes no representations or warranties regarding the properties or information herein including but not limited to any and all images pertaining to these properties. It is the obligation of each purchaser/lessee to investigate the condition and attributes of the properties and to verify the accuracy of the foregoing information to the extent such purchaser/lessee deems necessary. Also subject to errors, omissions, changes in terms and conditions, prior sale, lease or withdrawal, without notice.





JOHN DEARMOND

Licensed in LA

225.202.4649

jdearmond@stirlingprop.com

JUSTIN LANGLOIS, CCIM, SIOR

Licensed in LA

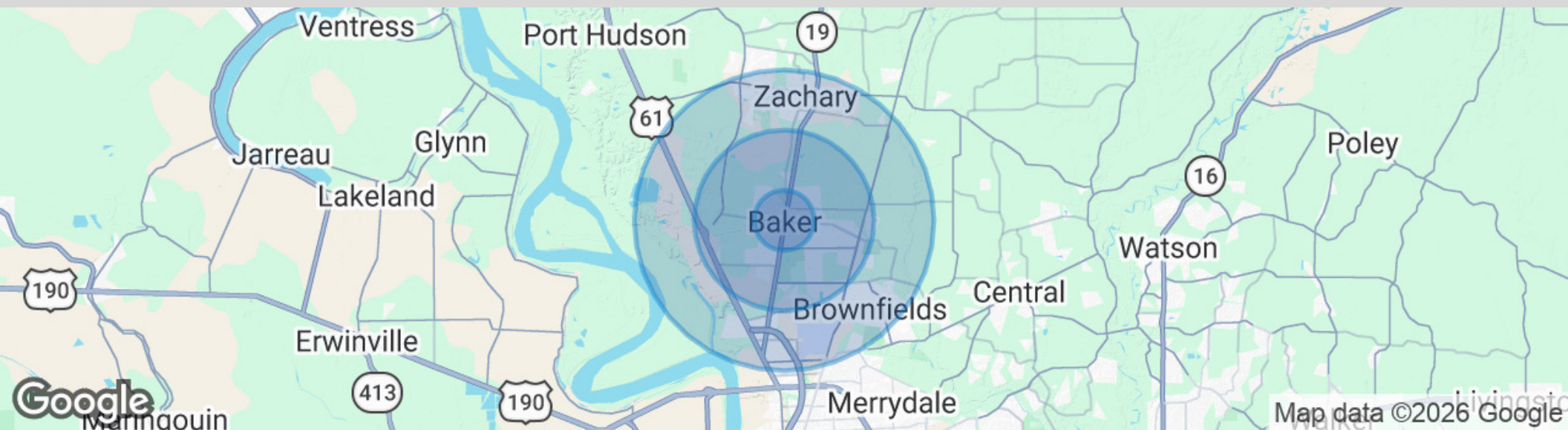
225.329.0287

jlanglois@stirlingprop.com

STIRLINGPROPERTIES.COM / f t i n

Member of /5
RETAIL BROKERS NETWORK

The foregoing is solely for information purposes and is subject to change without notice. Stirling Properties makes no representations or warranties regarding the properties or information herein including but not limited to any and all images pertaining to these properties. It is the obligation of each purchaser/lessee to investigate the condition and attributes of the properties and to verify the accuracy of the foregoing information to the extent such purchaser/lessee deems necessary. Also subject to errors, omissions, changes in terms and conditions, prior sale, lease or withdrawal, without notice.



POPULATION

	1 MILE	3 MILES	5 MILES
Total Population	4,307	18,309	50,939
Average Age	40	40	39
Average Age (Male)	39	38	37
Average Age (Female)	41	41	40

HOUSEHOLDS & INCOME

	1 MILE	3 MILES	5 MILES
Total Households	1,653	6,820	18,249
# of Persons per HH	2.6	2.7	2.8
Average HH Income	\$65,293	\$65,714	\$71,740
Average House Value	\$168,787	\$188,171	\$215,027

Demographics data derived from AlphaMap