



OFFICE SPACE FOR LEASE

# Sherwood OAKS

*4314, 4324, 4334 & 4354 S Sherwood Forest Blvd,  
Baton Rouge, LA 70816*

**CBRE**

# SHERWOOD OAKS

4314, 4324, 4334 & 4354  
S SHERWOOD FOREST BLVD,  
BATON ROUGE, LA 70816

Sherwood Oaks Office Park is located on S Sherwood Forest near the Coursey intersection. Multiple Shops and Restaurants in close proximity. Easy access to I-12, Coursey Blvd, and Airline Hwy.

*Rental Rate: \$16 PSF*

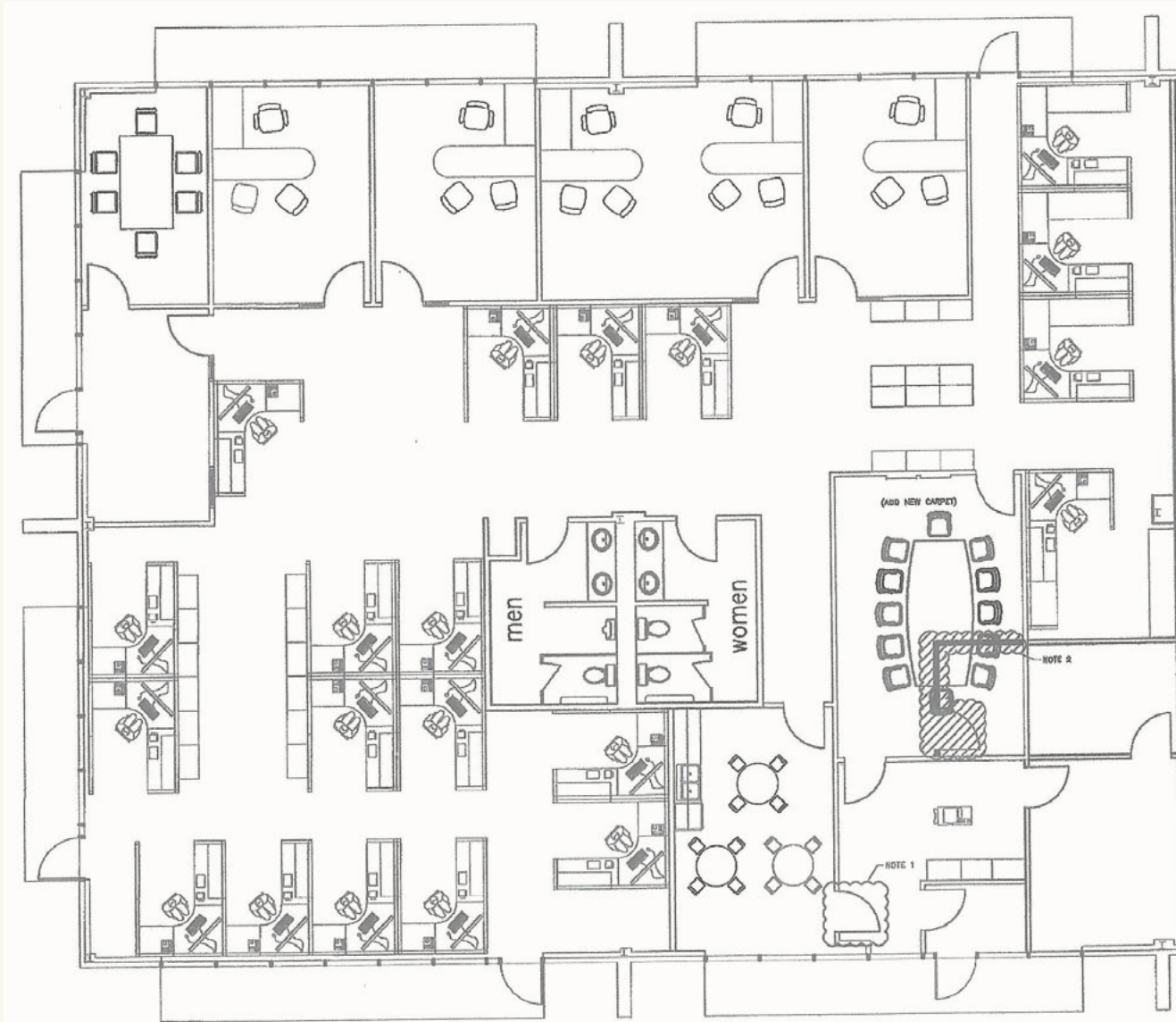


101,00 SFR  
*Net Rentable Area*

4/1,000  
*Parking (as part of a PUD)*

# BUILDING C

FLOOR PLAN



**SUITE 100F**  
**6,042 RSF**

# BUILDING D

FLOOR PLAN



**SUITE 145D**  
2,147 RSF

**SUITE 155D**  
803 RSF

**TOTAL**  
2,950 RSF

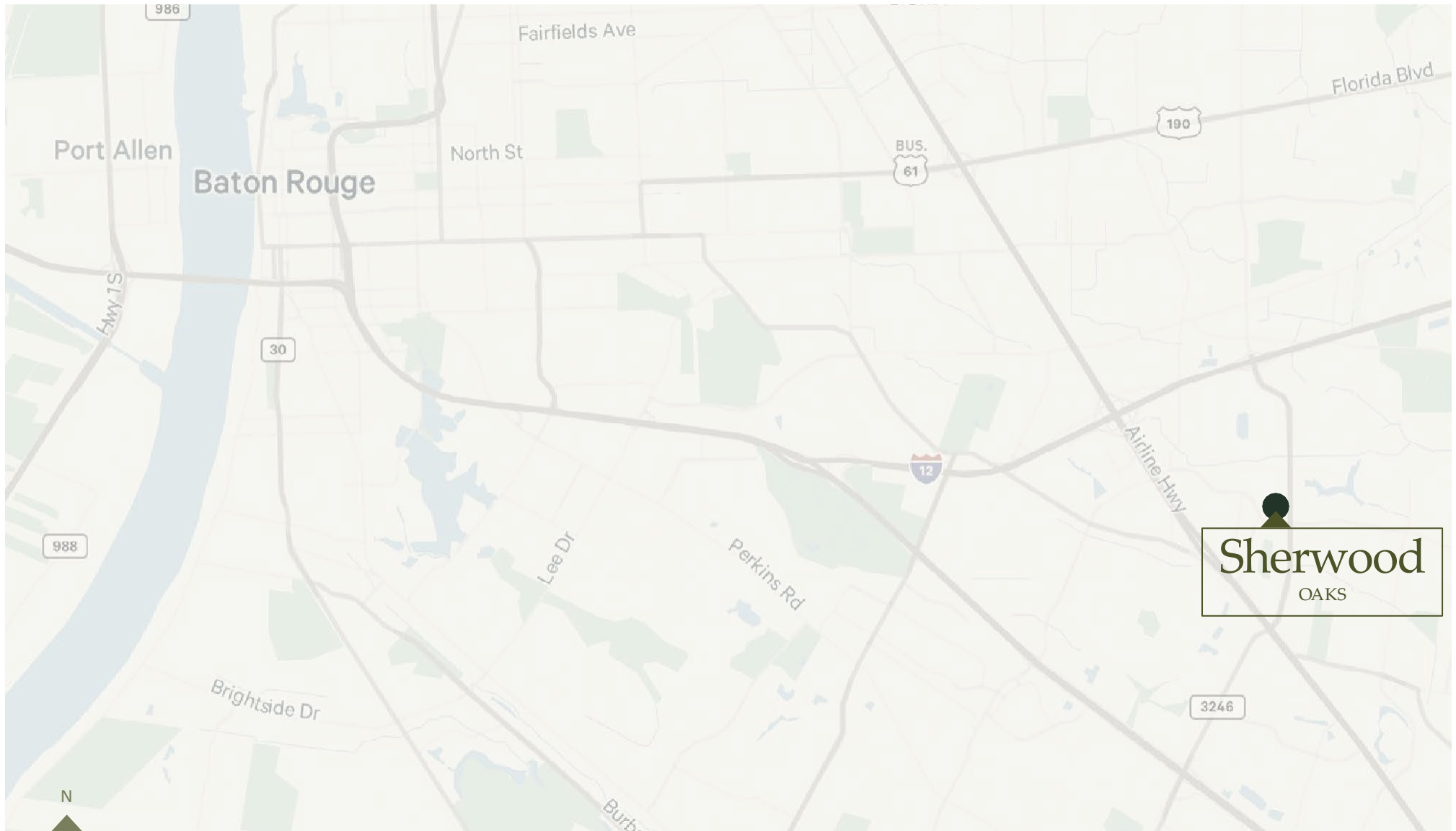
# BUILDING D

FLOOR PLAN



Leased

SUITE 260  
2,430 RSF



WITHIN 1-MILE

---

**22**  
restaurants & grocery

**2**  
hotels

**3**  
fitness



OFFICE SPACE FOR LEASE

# Sherwood OAKS

*4314, 4324, 4334 & 4354 S Sherwood Forest Blvd,  
Baton Rouge, LA 70816*

JONANN STUTZMAN

Vice President

C 225 445 0473

[jonann.stutzman@cbre.com](mailto:jonann.stutzman@cbre.com)

**CBRE**

[www.cbre.com](http://www.cbre.com)

Office: 225-952-1255

10101 Siegen Lane, Blding 1

Baton Rouge, LA 70810

© 2025 CBRE, Inc. All rights reserved. This information has been obtained from sources believed reliable but has not been verified for accuracy or completeness. CBRE, Inc. makes no guarantee, representation or warranty and accepts no responsibility or liability as to the accuracy, completeness, or reliability of the information contained herein. You should conduct a careful, independent investigation of the property and verify all information. Any reliance on this information is solely at your own risk. CBRE and the CBRE logo are service marks of CBRE, Inc. All other marks displayed on this document are the property of their respective owners, and the use of such marks does not imply any affiliation with or endorsement of CBRE. Photos herein are the property of their respective owners. Use of these images without the express written consent of the owner is prohibited.