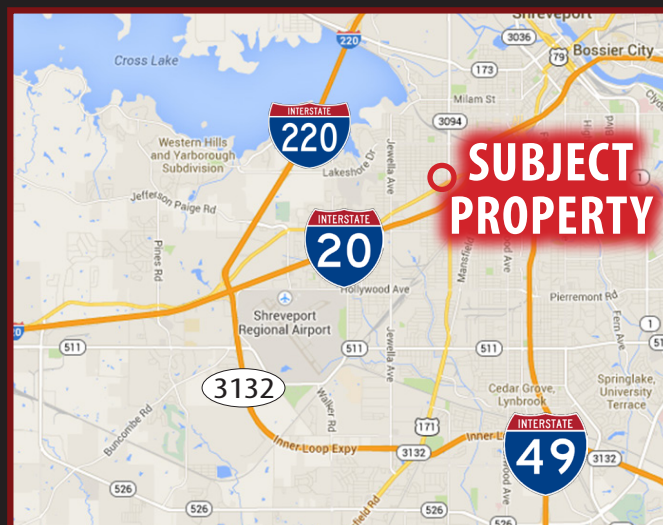


1.3 ACRES FOR SALE

3406 HEARNE AVE., SHREVEPORT, LA 71103

- 1.3 acres available for sale at 3406 Hearne Ave
- Entire city block on Hearne Ave and Kings Hwy
- 350 Feet from I-20 on ramp
- Good visibility
- 8,000 SF building
- Sale price \$1,100,000.00
- Zoned C-3 along Hearne Ave.
- Zoned R-2 along Velva Ave.
- Approx. 22,632 vehicles per day



For more information, contact:

Claire Childs | 318.222.2244

cchilds@vintagerealty.com | vintagerealty.com

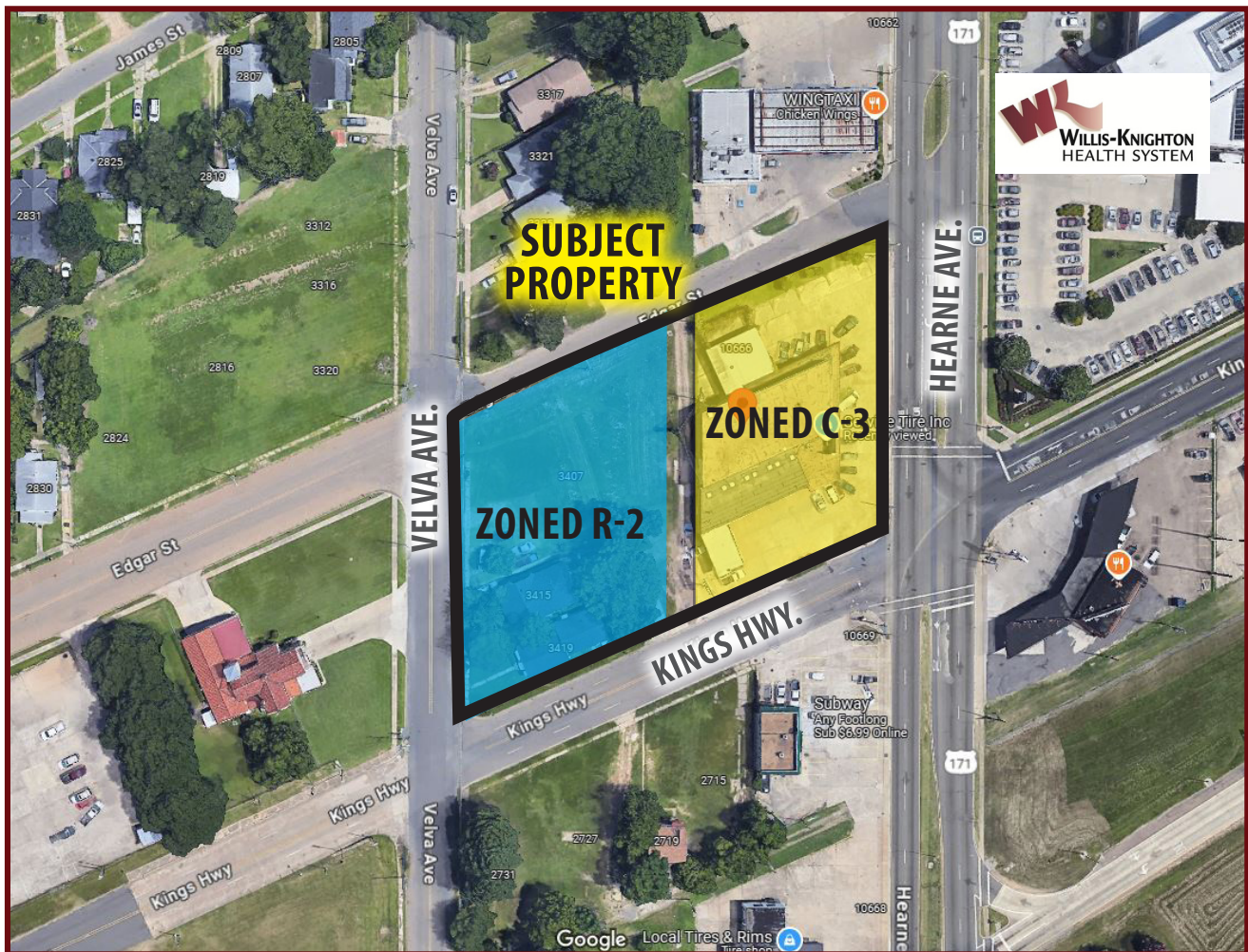
ALL INFORMATION CONTAINED HEREIN IS BELIEVED TO BE ACCURATE, BUT IS NOT WARRANTED AND NO LIABILITY OF ERRORS OR OMISSIONS IS ASSURED BY EITHER THE PROPERTY OWNER OR VINTAGE REALTY COMPANY OR ITS AGENTS AND EMPLOYEES. PRICES AS STATED HEREIN AND PRODUCT AVAILABILITY IS SUBJECT TO CHANGE AND/OR SALE OR LEASE WITHOUT PRIOR NOTICE, AND ALL SIZES AND DIMENSIONS ARE SUBJECT TO CORRECTION. REV 3/2025



1.3 ACRES AVAILABLE FOR SALE

3406 HEARNE AVE.,
SHREVEPORT, LA 71103

ZONING MAP



For information, please contact:

Claire Childs | 318.222.2244

cchilds@vintagerealty.com | vintagerealty.com

ALL INFORMATION CONTAINED HEREIN IS BELIEVED TO BE ACCURATE, BUT IS NOT WARRANTED AND NO LIABILITY OF ERRORS OR OMISSIONS IS ASSURED BY EITHER THE PROPERTY OWNER OR VINTAGE REALTY COMPANY OR ITS AGENTS AND EMPLOYEES. PRICES AS STATED HEREIN AND PRODUCT AVAILABILITY IS SUBJECT TO CHANGE AND/OR SALE OR LEASE WITHOUT PRIOR NOTICE, AND ALL SIZES AND DIMENSIONS ARE SUBJECT TO CORRECTION. 3/2025

1.3 ACRES AVAILABLE FOR SALE

3406 HEARNE AVE.,
SHREVEPORT, LA 71103

NEIGHBORHOOD AERIAL



For information, please contact:

Claire Childs | 318.222.2244

cchilds@vintagerealty.com | vintagerealty.com

ALL INFORMATION CONTAINED HEREIN IS BELIEVED TO BE ACCURATE, BUT IS NOT WARRANTED AND NO LIABILITY OF ERRORS OR OMISSIONS IS ASSURED BY EITHER THE PROPERTY OWNER OR VINTAGE REALTY COMPANY OR ITS AGENTS AND EMPLOYEES. PRICES AS STATED HEREIN AND PRODUCT AVAILABILITY IS SUBJECT TO CHANGE AND/OR SALE OR LEASE WITHOUT PRIOR NOTICE, AND ALL SIZES AND DIMENSIONS ARE SUBJECT TO CORRECTION. 3/2025

1.3 ACRES AVAILABLE FOR SALE

3406 HEARNE AVE.,
SHREVEPORT, LA 71103



For information, please contact:

Claire Childs | 318.222.2244

cchilds@vintagerealty.com | vintagerealty.com

ALL INFORMATION CONTAINED HEREIN IS BELIEVED TO BE ACCURATE, BUT IS NOT WARRANTED AND NO LIABILITY OF ERRORS OR OMISSIONS IS ASSURED BY EITHER THE PROPERTY OWNER OR VINTAGE REALTY COMPANY OR ITS AGENTS AND EMPLOYEES. PRICES AS STATED HEREIN AND PRODUCT AVAILABILITY IS SUBJECT TO CHANGE AND/OR SALE OR LEASE WITHOUT PRIOR NOTICE, AND ALL SIZES AND DIMENSIONS ARE SUBJECT TO CORRECTION. 3/2025