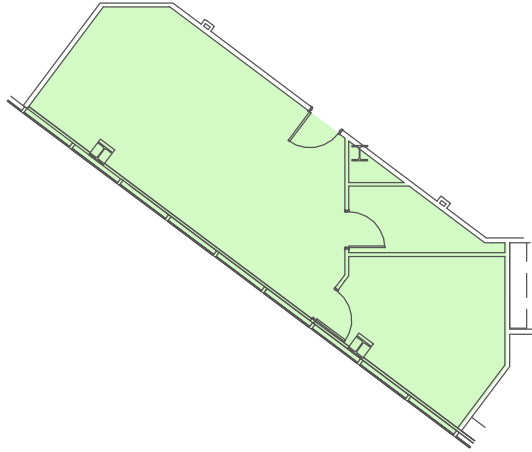


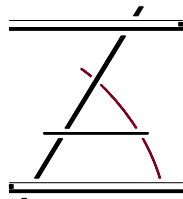
FIRST FLOOR
SUITE 105



1/16" = 1'-0" 0 5' 10' 15' 20'

PARKWAY PLAZA

201 ENERGY PARKWAY
LAFAYETTE, LOUISIANA 70508

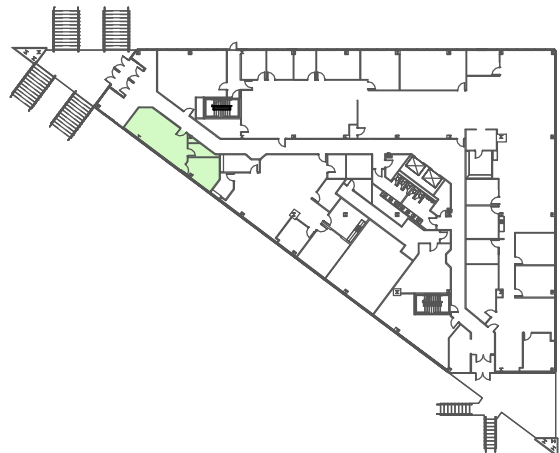


ZILER
ARCHITECTS

A PROFESSIONAL
ARCHITECTURAL
CORPORATION
JAMES O. ZILER, ARCHITECT
SEAN R. PRIMEAUX, ARCHITECT

101 Calco Boulevard
Lafayette, Louisiana 70503
Ph: 337-269-6326

1ST FLOOR



02/05/25