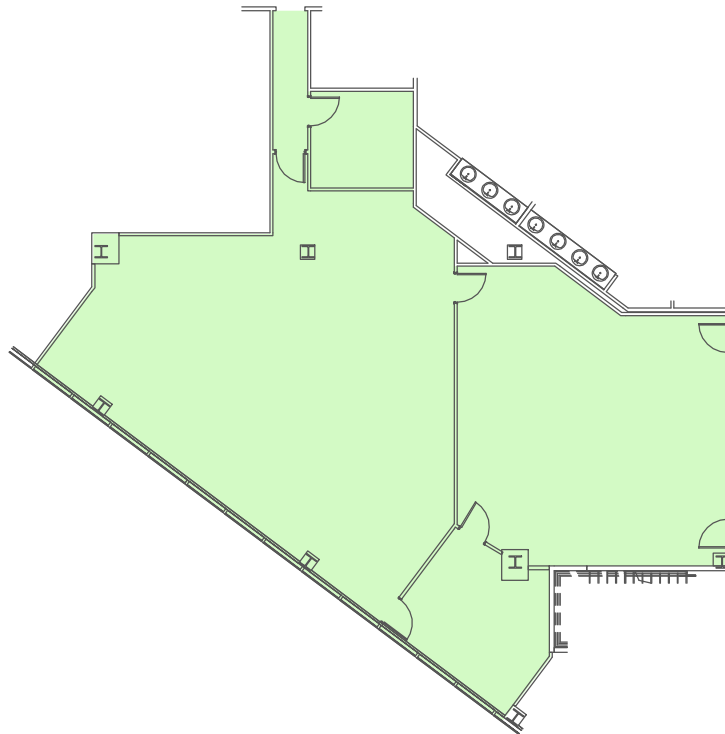


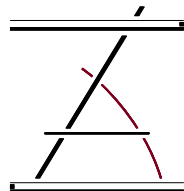
SECOND FLOOR  
SUITE 270



1" = 20'-0" 0 5' 10' 15' 20' 25'

**PARKWAY PLAZA**

201 ENERGY PARKWAY  
LAFAYETTE, LOUISIANA 70508



**ZILER**  
**ARCHITECTS**

A PROFESSIONAL  
ARCHITECTURAL  
CORPORATION

JAMES O. ZILER, ARCHITECT  
SEAN R. PRIMEAUX, ARCHITECT

101 Calco Boulevard  
Lafayette, Louisiana 70503  
Ph: 337-269-6326

2ND FLOOR



02/05/25