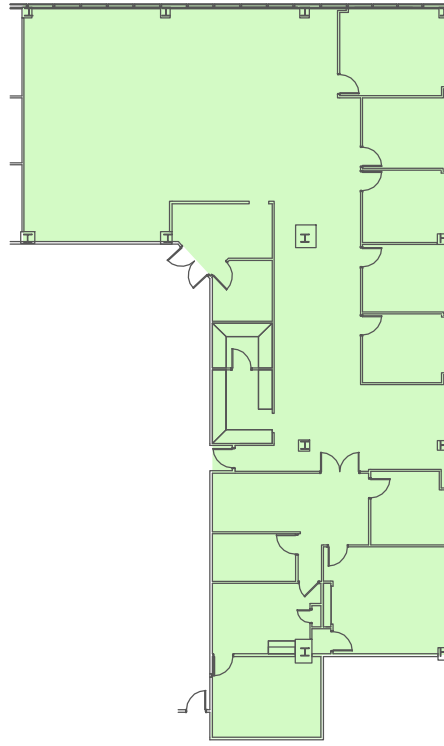


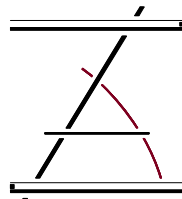
THIRD FLOOR SUITE 300



1" = 30'-0" 0 10' 20' 30' 40'

PARKWAY PLAZA

201 ENERGY PARKWAY
LAFAYETTE, LOUISIANA 70508



ZILER
ARCHITECTS

A PROFESSIONAL
ARCHITECTURAL
CORPORATION

JAMES O. ZILER, ARCHITECT
SEAN R. PRIMEAUX, ARCHITECT

101 Calco Boulevard
Lafayette, Louisiana 70503
Ph: 337-269-6326

3RD FLOOR



11/27/24