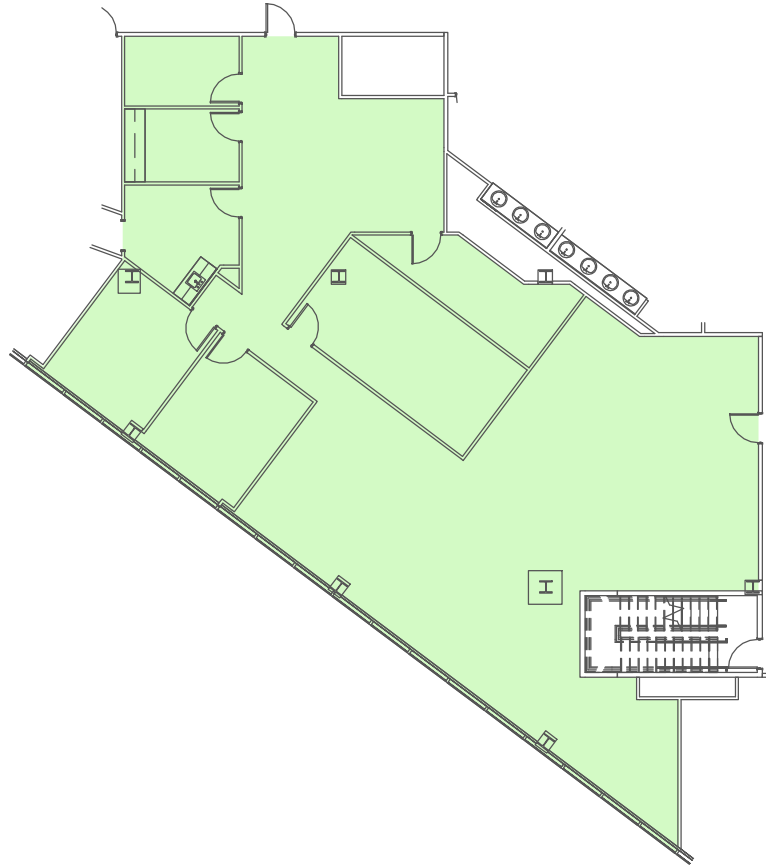


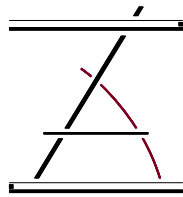
THIRD FLOOR SUITE 305



1" = 20'-0" 0 5' 10' 15' 20' 25'

PARKWAY PLAZA

201 ENERGY PARKWAY
LAFAYETTE, LOUISIANA 70508



ZILER
ARCHITECTS

A PROFESSIONAL
ARCHITECTURAL
CORPORATION

JAMES O. ZILER, ARCHITECT
SEAN R. PRIMEAUX, ARCHITECT

101 Calco Boulevard
Lafayette, Louisiana 70503
Ph: 337-269-6326

3RD FLOOR



05/06/25