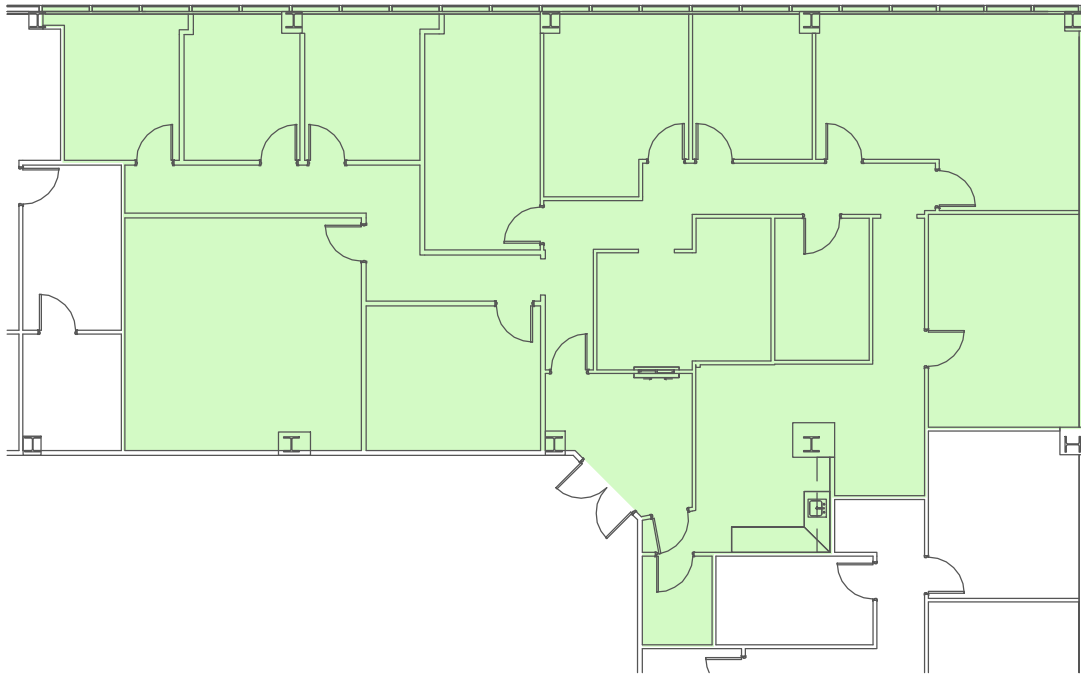


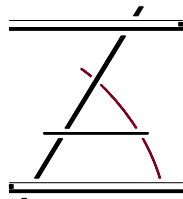
FOURTH FLOOR
SUITE 400



1/16" = 1'-0" 0 5' 10' 15' 20'

PARKWAY PLAZA

201 ENERGY PARKWAY
LAFAYETTE, LOUISIANA 70508



ZILER
ARCHITECTS
A PROFESSIONAL
ARCHITECTURAL
CORPORATION

JAMES O. ZILER, ARCHITECT
SEAN R. PRIMEAUX, ARCHITECT

101 Calco Boulevard
Lafayette, Louisiana 70503
Ph: 337-269-6326

4TH FLOOR



11/27/24