

FOR LEASE

5 Creekside Park Court Greenville, SC 29615

NAI Earle Furman



Office | 3,800 SF

- Suite A: 3,800 SF (main level)
- Outside the City limits
- Each suite has separate power, heating & cooling
- Centrally located office building in the heart of Greenville, less than 1/2 mile from Patewood Memorial Hospital, St. Francis Hospital and Greenville University Medical Center
- Great access to I-85 and I-385
- Zoned S-1
- Ample Parking
- Lease rate: \$10.00/SF NNN



✉ **Keith Jones, CCIM, SIOR**
O: +1 864 232 9040
keith@naiearlefurman.com

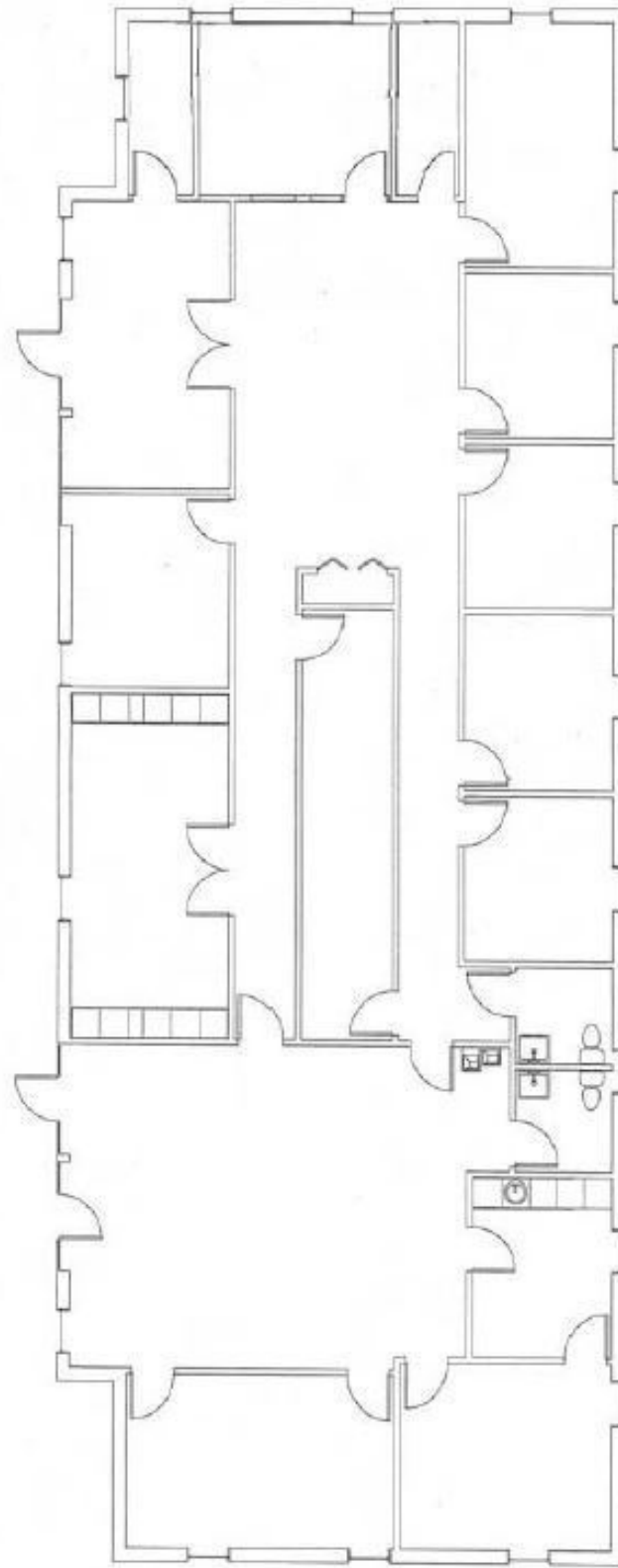
✉ **McNeil Epps**
O: +1 864 232 9040 x5956
C: +1 803 473 0179
mepps@naiearlefurman.com

No Warranty, Or Representation, Express Or Implied, Is Made As To The Accuracy Of The Information Contained Herein, And The Same Is Submitted Subject To Errors, Omissions, Change Of Price, Partial Or Other Conditions, Prior Sale, Lease Or Financing, Or Withdrawal Without Notice And Of Any Special Listing Conditions Imposed By Our Principals. No Warranties Or Representations Are Made As To The Condition Of The Property Or Any Hazards Contained Therein Are Any To Be Implied.

📍 **101 E Washington St**
Greenville, SC 29601
naief.com

FOR LEASE

5 Creekside Park Court Greenville, SC 29615



Main Level

✉ **Keith Jones, CCIM, SIOR** ✉
O: +1 864 232 9040
keith@naiearlefurman.com

✉ **McNeil Epps**
O: +1 864 232 9040 x5956
C: +1 803 473 0179
mepps@naiearlefurman.com

No Warranty Or Representation, Express Or Implied, Is Made As To The Accuracy Of The Information Contained Herein, And The Same Is Submitted Subject To Errors, Omissions, Change Of Price, Rental Or Other Conditions, Prior Sale, Lease Or Financing, Or Withdrawal Without Notice And Of Any Special Listing Conditions Imposed By Our Principals No Warranties Or Representations Are Made As To The Condition Of The Property Or Any Hazards Contained Therein Are Any To Be Implied.

NAI Earle Furman