

SITE 18 • BRACKEN & OLD GROVE ROADS
PIEDMONT, SOUTH CAROLINA

- ▶ ±27 Total acres
- ▶ Multiple park entrances / exits
- ▶ Progressive surrounding community with a skilled workforce
- ▶ Multi-lane parkway road system in place
- ▶ Ideal location along the I-85 corridor between Atlanta & Charlotte
- ▶ Contact brokers for pricing

- ▶ Utilities Available
 - Power - Duke Energy
 - Water - Greenville Water
 - Gas - Piedmont Natural Gas
 - Sewer - Gantt Sewer Department & Metropolitan Sewer District

[CLICK HERE TO VIEW VIDEO](#)

FOR MORE INFORMATION

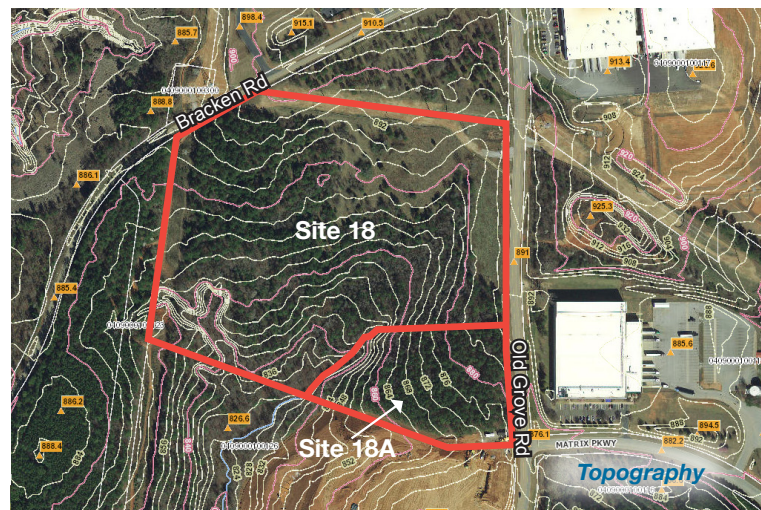
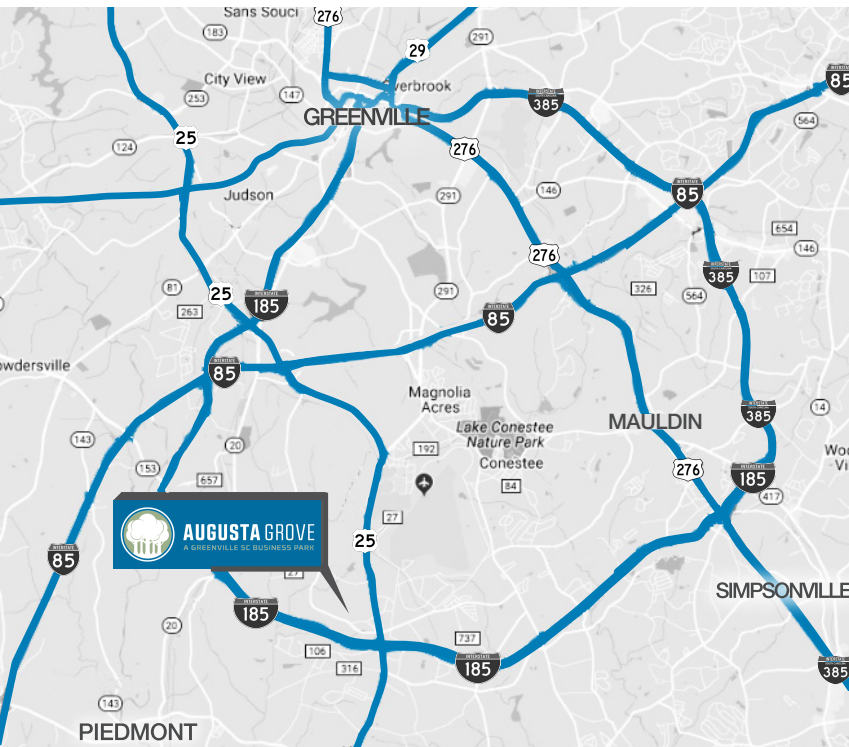
Grice Hunt, SIOR

864 678 5935 | grice@naief.com

Clay Williams

864 678 5938 | clay@naief.com

NA Earle Furman
101 E. WASHINGTON ST, STE 400
GREENVILLE, SC 29601
NAIEARLEFURMAN.COM



Driving Distances

I-85	±4 miles	SC Inland Port	±22 miles
Greenville, SC	±9 miles	I-26	±39 miles
I-385	±11 miles	Charlotte, NC	±106 miles
GSP Airport	±16 miles	Atlanta, GA	±148 miles
BMW Facility	±18 miles		

Augusta Grove is the premier industrial and business park in Upstate, South Carolina. Strategically located in southern Greenville County's "Hub of Industry" along the I-85 corridor halfway between Atlanta and Charlotte, Augusta Grove offers world-class industry leaders like GE Aviation, KI Logistics, Magna and JTEKT all the advantages of a master-planned business park with convenient proximity to major interstates.



FOR MORE INFORMATION

Grice Hunt, SIOR

864 678 5935 | grice@naief.com

Clay Williams

864 678 5938 | clay@naief.com

NA Earle Furman
 101 E. WASHINGTON ST, STE 400
 GREENVILLE, SC 29601
 NAIEARLEFURMAN.COM