

- Subject Property
- Available Sites
- Park Entrance
- Main Entrance

SITE 20 • BRACKEN ROAD
PIEDMONT, SOUTH CAROLINA

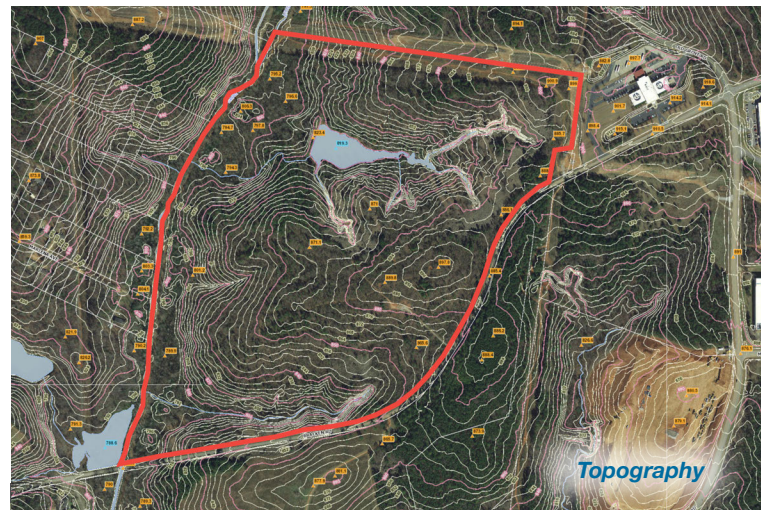
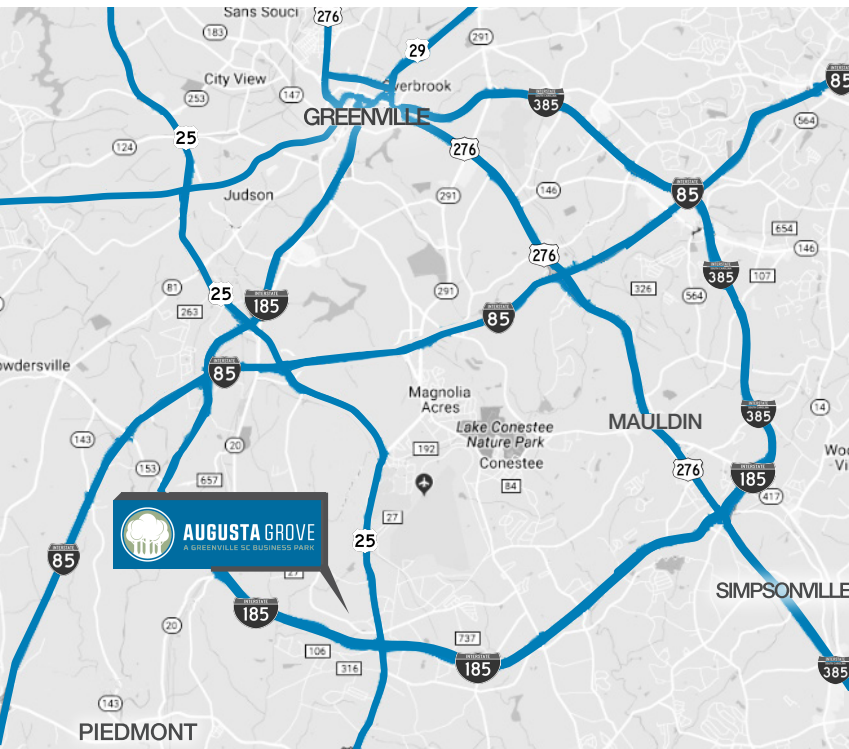
- ▶ ±140 Total acres
- ▶ Multiple park entrances / exits
- ▶ Progressive surrounding community with a skilled workforce
- ▶ Multi-lane parkway road system in place
- ▶ Ideal location along the I-85 corridor between Atlanta & Charlotte
- ▶ Contact brokers for pricing
- ▶ Utilities Available
 - Power - Duke Energy
 - Water - Greenville Water
 - Gas - Piedmont Natural Gas
 - Sewer - Gantt Sewer Department & Metropolitan Sewer District

[CLICK HERE TO VIEW VIDEO](#)

FOR MORE INFORMATION

Grice Hunt, SIOR **Clay Williams**
 864 678 5935 | grice@naief.com 864 678 5938 | clay@naief.com

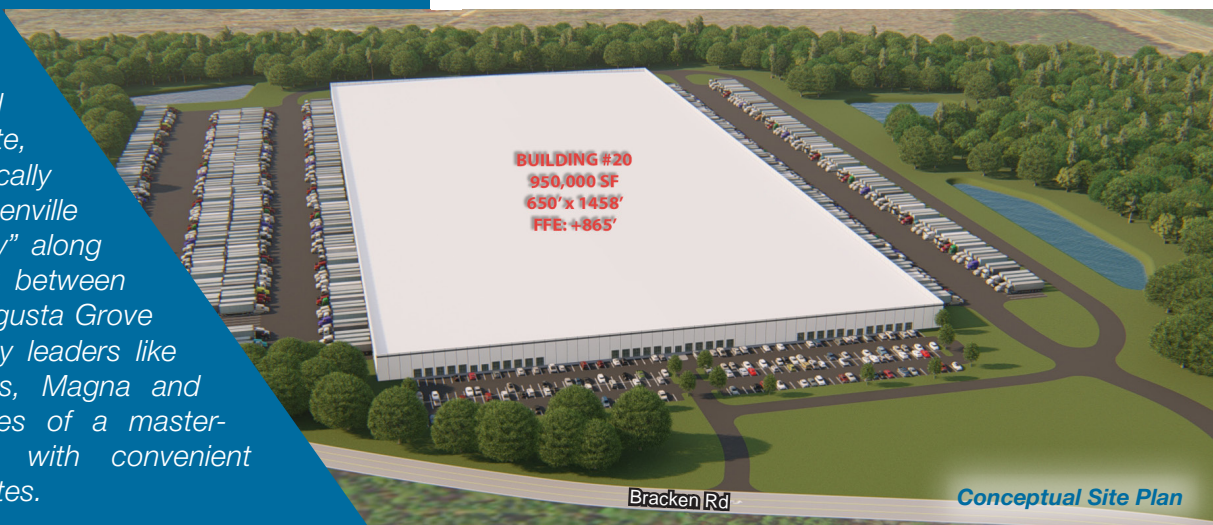
NA Earle Furman
 101 E. WASHINGTON ST, STE 400
 GREENVILLE, SC 29601
 NAIEARLEFURMAN.COM



Driving Distances

| | | | |
|----------------|-----------|----------------|------------|
| I-85 | ±4 miles | SC Inland Port | ±22 miles |
| Greenville, SC | ±9 miles | I-26 | ±39 miles |
| I-385 | ±11 miles | Charlotte, NC | ±106 miles |
| GSP Airport | ±16 miles | Atlanta, GA | ±148 miles |
| BMW Facility | ±18 miles | | |

Augusta Grove is the premier industrial and business park in Upstate, South Carolina. Strategically located in southern Greenville County's "Hub of Industry" along the I-85 corridor halfway between Atlanta and Charlotte, Augusta Grove offers world-class industry leaders like GE Aviation, KI Logistics, Magna and JTEKT all the advantages of a master-planned business park with convenient proximity to major interstates.



FOR MORE INFORMATION

Grice Hunt, SIOR

864 678 5935 | grice@naief.com

Clay Williams

864 678 5938 | clay@naief.com

NAI Earle Furman
 101 E. WASHINGTON ST., STE 400
 GREENVILLE, SC 29601
 NAIEARLEFURMAN.COM