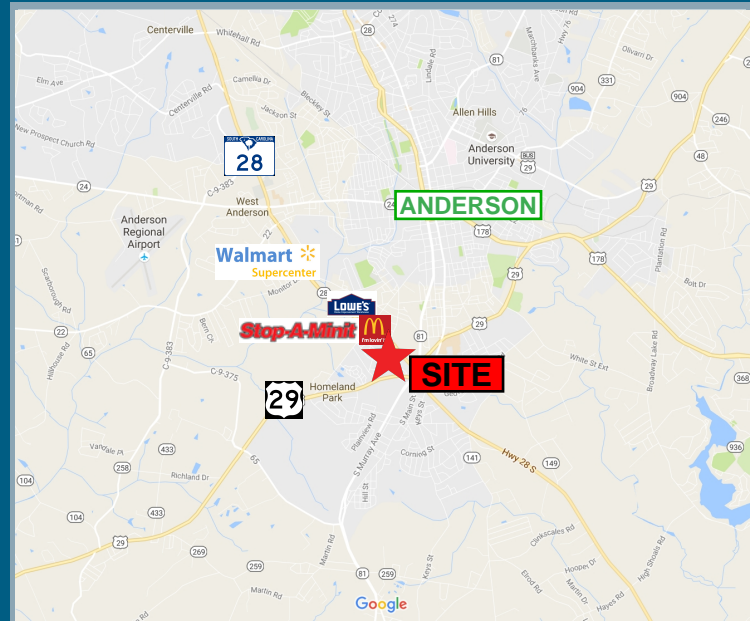




PROPERTY DETAILS

- » Zoning - Commercial
- » Utilities - All available
- » Road Frontage:
Hwy. 28 - 1,500+/- feet & Hwy. 29 - 600+/- feet
- » Ideal Uses - Retail, office, flex
- » Pricing:
 Lot A - \$149,500 / 1.42 AC
 Lot B - \$167,500 / 1.60 AC
 Lot C - \$199,900 / 2.00 AC
 Lot D - \$199,900 / 2.00 AC
 Lot E - \$179,500 / 1.70 AC
 Lot F - \$199,500 / 2.45 AC
 Lot G - \$295,000 / 8.4 AC (includes 5.17 AC flood plain)
 Sold as one tract \$975,000 / 24.74 AC



Contact

Andy Parnell

864-679-3638
 aparnell@windsoraughtry.com

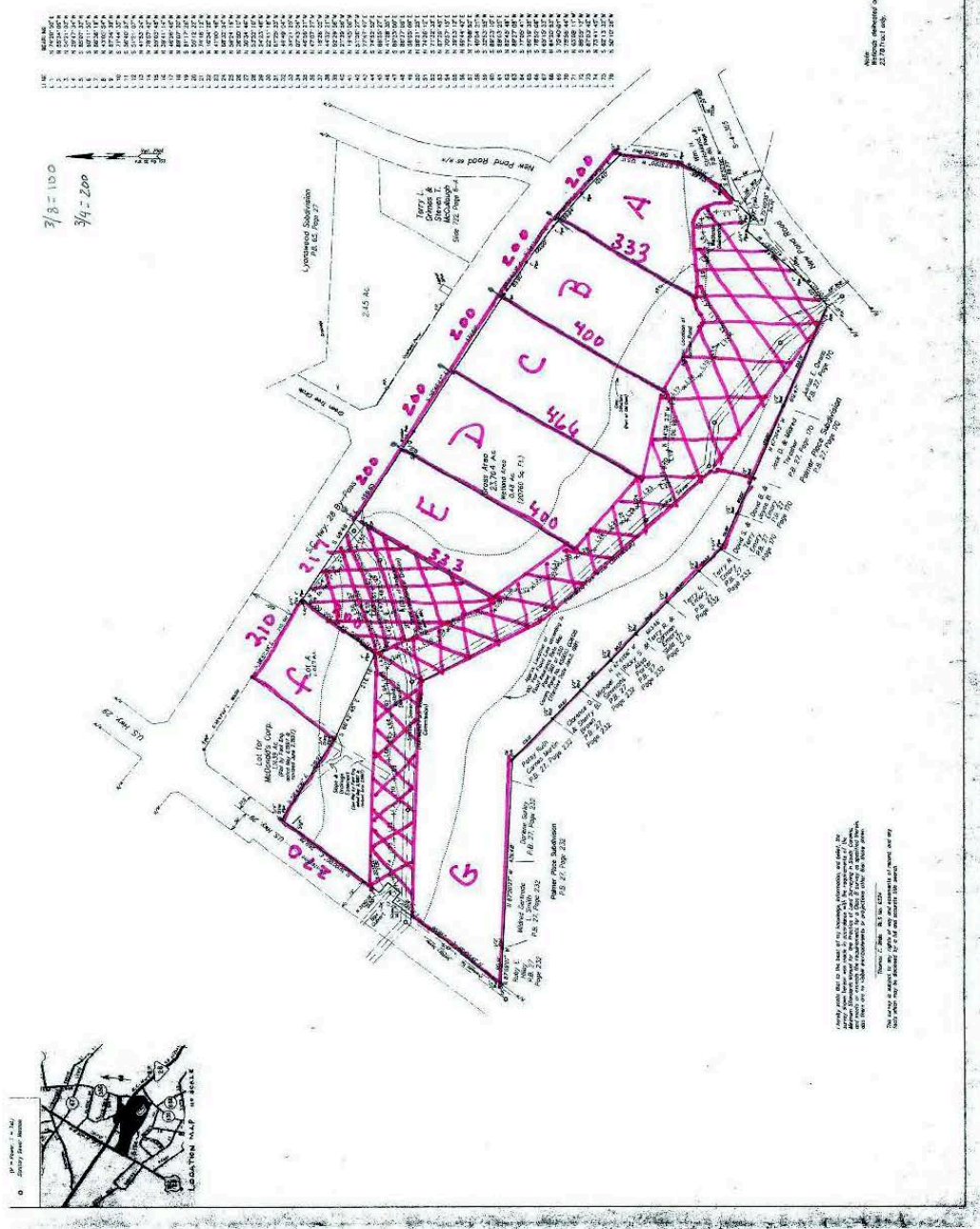
Bill Fayssoux, CCIM

864-679-3632
 bfayssoux@windsoraughtry.com

Lot Break down

A	± 1.42 ACRES
B	± 1.60 AC
C	± 2.00 AC
D	± 2.00 AC
E	± 1.70 AC
F	± 2.45 AC
G	± 8.40 AC
± 19.57 AC	
TOTAL ± 24.79 AC	

undevelopable



State of South Carolina
 Registered Professional Engineer
 William J. Alexander, IV
 License No. 10000
 Date: 12/15/2011