

MODERN LUXURY
OCEAN DRIVE

March Issue



MODERN LUXURY
OCEAN DRIVE

space SURREAL ESTATE



The Standard Residences, Midtown Miami
 One and a half miles of Miami's most dramatic neighborhoods, The Standard Residences bring a high-tech through design and culture along the 1,600 square foot of thoughtful design space to a new building in midtown. Complete with a pickleball court with glass balls and music, residents can get into the world's fastest growing and healthiest sport in an air conditioned setting. The residences will also offer custom-designed pickleball gear, including sweaters, jackets, hats and more. 1100 NE First Ave., Miami. @thestandardresidences

The Ritz-Carlton Residences, Pompano Beach
 Comprising both a Beach Tower and Marina Tower, The Ritz-Carlton Residences, Pompano Beach comes with amenities galore. Envyable features include a beach club, marina, wellness center, his and her spas, treatment rooms and wellness-conscious nutrition services. The property also holds a new pickleball court on the Marina Tower's sunset deck over the Intracoastal. Redefining luxurious living with over 3,000 square feet of amenities, The Ritz-Carlton perfectly aligns with the lifestyle of residents. 1380 S. Ocean Blvd., Pompano Beach, @theresidencespompanobeach

Pickle Playground
 PICKLEBALL IS SWEEPING THE NATION WITH NEW COURTS POPPING UP IN LIGHT RAIL ESTATE DEVELOPMENTS. FIND THE LATEST VMAA PROPERTIES SHINING LIGHT ON THE SPORT HERE.
 BY CHRIS SCOTT



One Park Tower by Terberry
 With panoramic views of One River State Park, the new One Atlantic Ocean and Miami's bold skyline, the new luxury condominium One Park Tower by Terberry offers the most thoughtfully designed lifestyle amenities. The 25-story tower overlooks the beautiful 7-acre Crystal Lagoon and includes 37 acres of green space. Located a short walk through the lush landscaped garden, the expansive outdoor amenity deck features a private pickleball court, one of the many wellness amenities available for residents, including a quickly growing sport to help shape 2023. Lagoon Club, South Miami, @terberrydevelopment

Cypress Residences
 Cypress Residences is located in the heart of downtown Miami, offering residents the best of both worlds. The property is a prime location for those who want to be close to the city's vibrant culture and amenities, while also enjoying the tranquility of a lush, landscaped garden. The property offers a variety of amenities, including a private pickleball court, a wellness center, and a pool. 1400 S. Miami Ave., Miami. @cypressresidences

St. Regis Residences, Miami
 Offering panoramic views of the water views, the St. Regis Residences, developed by the iconic Conrad and Hilton luxury brands, features more than 1,000 square feet of indoor and outdoor amenities. St. Regis provides an unbeatable list of amenities, including a 10,000 sq. ft. fitness and spa, a full-service outdoor pickleball court and more. For fans of the game, you can enjoy the court's sunset deck, which offers the most scenic view of the city. 1400 S. Miami Ave., Miami. @stregisresidences



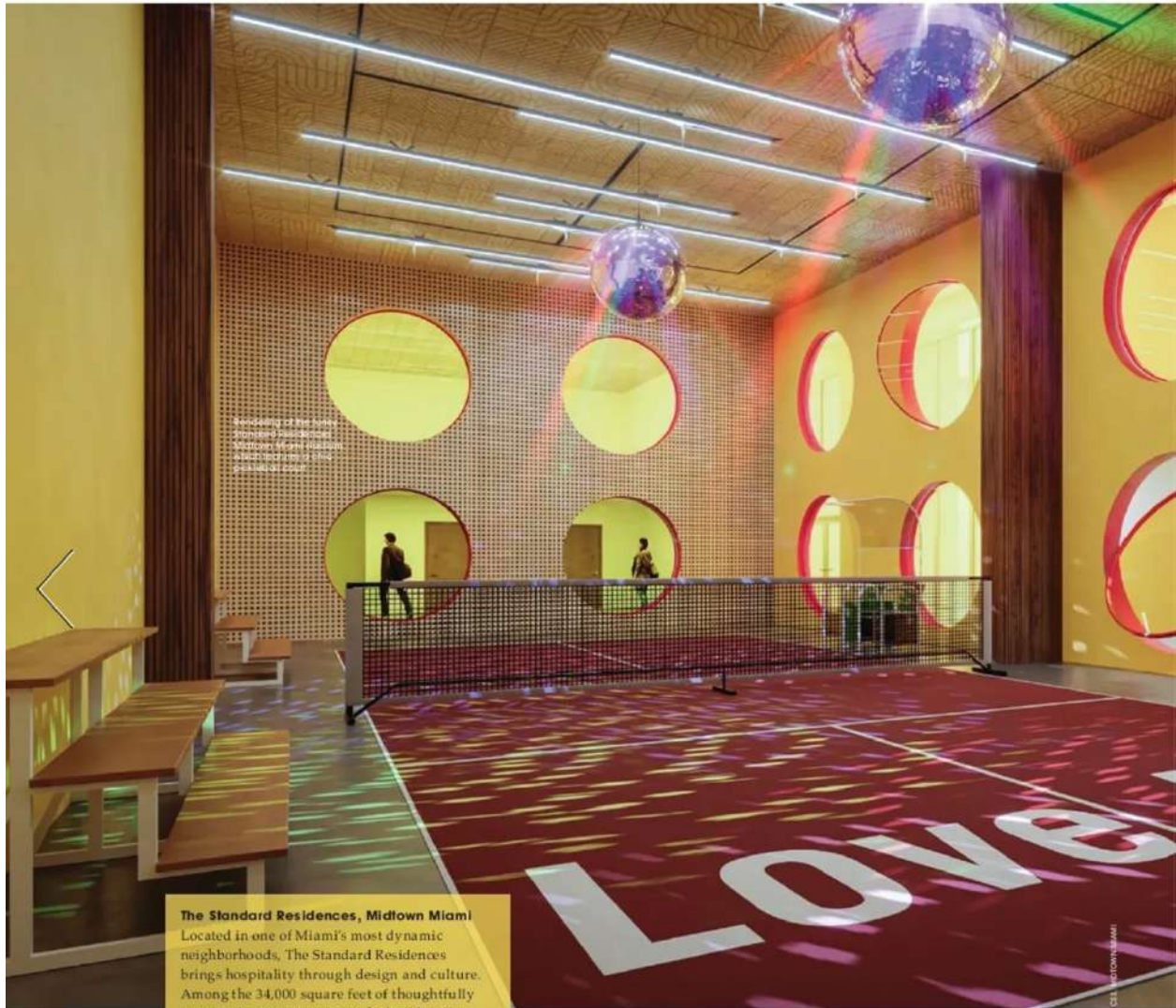
Photo: St. Regis Residences Miami

The Ritz-Carlton Residences, Pompano Beach

Comprising both a Beach Tower and Marina Tower, The Ritz-Carlton Residences, Pompano Beach comes with amenities galore. Envyable features include a beach club, marina, wellness center, his and her spas, treatment rooms and wellness-conscious nutrition services. The property also holds a new pickleball court on the Marina Tower's sunset deck over the Intracoastal. Redefining luxurious living with over 35,000 square feet of amenities, The Ritz-Carlton perfectly aligns with the lifestyle of residents. 1380 S. Ocean Blvd., Pompano Beach, @theresidencespompanobeach

MODERN LUXURY
OCEAN DRIVE

space SURREAL ESTATE



The Standard Residences, Midtown Miami
Located in one of Miami's most dynamic neighborhoods, The Standard Residences brings hospitality through design and culture. Among the 34,000 square feet of thoughtfully imagined amenity spaces is the building's stadium. Complete with a pickleball court with disco balls and music, residents can partake in the world's fastest-growing and incredibly social sport in an air-conditioned setting. The residences will also offer custom-designed pickleball gear, including uniforms, paddles, balls and sweatbands. 3100 NE First Ave., Miami, @thestandardmiamiresidences

The Ritz-Carlton Residences, Pompano Beach
Comprising both a Beach Tower and Marina Tower, The Ritz-Carlton Residences, Pompano Beach comes with amenities galore. Envious features include a beach club, marina, wellness center, his and her spas, treatment rooms and wellness-conscious nutrition services. The property also holds a new pickleball court on the Marina Tower's sunset deck over the Intracoastal. Redefining luxurious living with over 35,000 square feet of amenities, The Ritz-Carlton perfectly aligns with the lifestyle of residents. 1380 S. Ocean Blvd., Pompano Beach, @theresidencespompanobeach

PHOTO COURTESY OF THE STANDARD RESIDENCES AND RITZ-CARLTON RESIDENCES