

## WASH BASIN

PRODUCT ID : ELI7013(RB.ELN.01G107.01.05)

Fine fire clay above counter wash basin (vessel basin) without tap hole. Designed for wall mounted taps and to be installed on a cantilevered wooden base or any chosen surface



### FEATURES

- Fine fire clay wash basin without overflow hole
- Contemporary design
- Deep bowl for comfortable use
- Designed for wall mounted taps
- Fulfills high design and quality expectations

### INCLUDED COMPONENTS

- Faucets not included

### COLOUR

- White

### WARRANTY

- 5 year written warranty against crazing and dunting

### STANDARDS APPLICABLE

Specified model meets or exceeds the following:

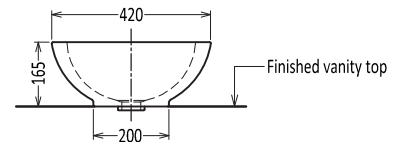
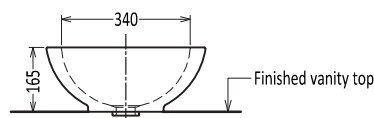
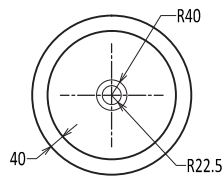
- BS EN 14688 : 2006

\*\* Approximate measurements for comparison only

CONFIGURATION	ABOVE COUNTER WASH BASIN
Weight	9 kg
Basin Area	340 X 340 X 140 mm
Height - Floor to Rim	850 mm
Nominal Dimensions	420 X 420 X 165 mm
Waste Hole	45 mm
Water Depth	137 mm

## TECHNICAL DRAWINGS

All drawings contain the necessary measurements, which are subject to standard tolerances. They are stated in mm, are drawn on a scale of 1:20 and are non-binding. Exact measurements, in particular for customized installation scenarios, can only be taken from the finished ceramic piece.



## INSTALLATION NOTES

- Install this product according to the installation guide



Rocell Bathware Limited.  
 No. 10, R. A. De Mel Mawatha, Colombo 03, Sri Lanka.  
 T: +94 11 4 799 400 F: +94 11 4 720 077 E: info@rcl.lk W: www.rocellbathware.com