

CATALOG 2021

RefrigiWear®  
refrigiwear.com



# TABLE OF CONTENTS

LIKE YOUR TOOLBOX, KNOW WHERE TO FIND ALL THE GOOD STUFF....

04 NEW PRODUCTS

06 OUTERWEAR

46 RAINWEAR

48 HIVIS

50 SWEATS & FLEECES

57 LAYERS

58 WOMEN'S

64 GLOVES

76 FOOTWEAR

84 HEADWEAR











## NEW PRODUCTS TO FIGHT THE COLD

Our new products are designed with work in mind. They have incredible features to keep you warmer, make you more productive, fight fatigue and more.

**WITH REFRIGIWEAR® YOU CAN OWN THE COLD.**

**8750 EXTREME HOODED JACKET | PAGE 06**



**0420 WOMEN'S QUILTED PANTS | PAGE 60**



**1285 IRON-TUFF® HIKER | PAGE 79**



**8220 TWO-TONE HIVIS INSULATED JACKET | PAGE 32**

**7496 HIVIS INSULATED SOFTSHELL PANTS | PAGE 35**



**7440 POLARFORCE® HYBRID SWEATPANTS | PAGE 52**



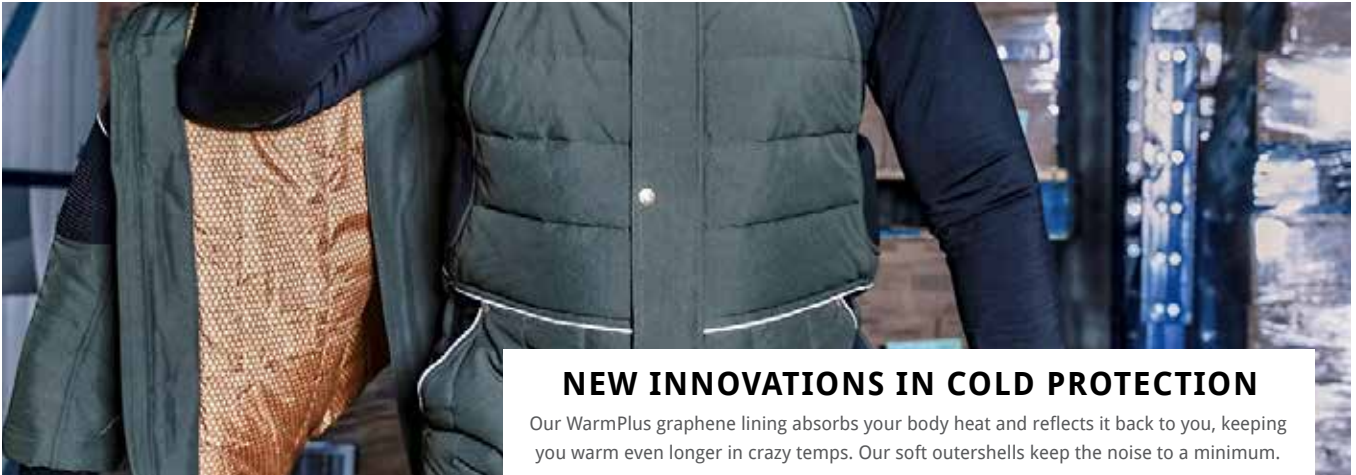


## WORK COMFORTABLY IN ANY TEMPERATURE

Our new products give you more options for different environments. ChillShield™ protects great in 10° to 40°F, while 54 Gold will keep you protected all the way down to -50°F.

**7354 54 GOLD BIB OVERALLS** | [PAGE 15](#)

**8650 CHILLSHIELD™ JACKET & 7750 CHILLSHIELD™ PANTS** | [PAGE 40 & 41](#)



## NEW INNOVATIONS IN COLD PROTECTION

Our WarmPlus graphene lining absorbs your body heat and reflects it back to you, keeping you warm even longer in crazy temps. Our soft outershells keep the noise to a minimum.



**2795 EXTREME ULTRA GRIP GLOVE**  
[PAGE 65](#)



**2960 54 GOLD GLOVE** | [PAGE 66](#)



**2890 HEATED GLOVE WITH RECHARGEABLE BATTERY** | [PAGE 65](#)



**2800 FREEZER EDGE® GLOVE**  
[PAGE 67](#)



EXTREME



## TAKE IT TO THE EXTREME

Don't let the cold tell you to stay at home. RefrigiWear®

Extreme is warmth like you've never experienced, with a comfort rating down to -60°F. You won't find anything warmer than this full collection of gear that handles tough jobs as well as the cold. No matter what extremes the day holds, you can handle it.



a.

### a. **NEW** Extreme Hooded Jacket

Get durable yet flexible protection from extreme cold in a snap. Attach the removable hood for work in colder temps. Open the zippered under-arm vents to let in a little air when work starts heating up.



Black | S-5XL | 8750 | Starting at \$218



b.



### b. **NEW** Extreme Ultra Grip Glove

Offering extreme protection and durability, these gloves have impact protection for safety and Insulate® for warmth. M, L, XL | 2795 | \$68



Pre-curved, ergonomic fit

#### CUT RESISTANT & DURABLE

The palm has a cut-resistant patch and silicone dots, giving you protection from punctures, added grip and making the glove extra durable.





### a. Extreme Pac Boot

Labanbar  
-60% to 10%  
comfort rating  
-51° to -12°  
celsius

Fight foot fatigue and the cold while staying safe with the Extreme Pac Boot. You never want to waste time on discomfort or unreliable tools – that's why these boots feature the BOA® Fit System for lacing. Comes with 1 pair of 1700L liners. See page 77 for details.

Full 7-14 | 1700 | \$236

Featuring VitaComfort®, see page 76 for details.



### b. Extreme Hiker

Labanbar  
-40% to 10%  
comfort rating  
-40° to -12°  
celsius

Bring on tough days in harsh conditions with these boots built for extremes. The BOA® Fit System gives you a perfect fit all day. See page 77 for details.

Full 7-14 Half 8½-11½ | 1250 | \$196

Featuring VitaComfort®, see page 76 for details.



### c. NEW Extreme Hooded Balaclava

Get flexible protection in this 3-in-1 balaclava. Wear as a gaiter when it's chilly. Add the cap for more warmth. Wear as full balaclava for the ultimate defense from the cold.



Black | S/M, L/XL | 6750 | \$41





## EXTREME

## EXTREME COMFORT

Extreme warmth? You bet. Tough as nails? It's a given. But we didn't stop there. We made these warm, durable garments extremely comfortable.

With a soft inner liner and wind-resistant, water-repellent outershell to keep you protected from the elements and in temps down to -60°F, there's nothing holding you back.

a.



### a. Extreme Softshell Jacket

One of the toughest jackets out there that can keep you protected down to -60°F. Features flexible softshell, draft protections and waterproof zippers. The ultimate protection for extreme conditions. Meets EN 342:2017 Protective Clothing - Protection Against Cold: 0.455(B) | 3 | X



Black | S-5XL | 0790 | Starting at \$203



a.



b.



### b. Extreme Freezer

Freezer boots that handle temps down to -45°F, with puncture resistant plates and anti-slip soles to keep you protected, safe and focused on work.

Full 7-14, Half 8½-11½ | 190 | \$196

Featuring **VitoComfort**®, see page 76 for details.





**-60°F**  
comfort rating  
**-51°C**

**EXTREME**



a.



a.

### a. Extreme Softshell Bib Overalls

These bibs can handle whatever abuse the day holds. They feature abrasion-resistant patches, high torso coverage and protection from the harshest temps. There's a reason we named them Extreme.

Meets EN 342:2017 Protective Clothing - Protection Against Cold: 0.455(B) | 3 | X



Black | S-5XL | 0795 | Starting at \$203



**-30°F**  
comfort rating  
**-34°C**

### b. Extreme Freezer Glove

Offering extreme protection and durability, these gloves have impact protection for safety and Thinsulate® for warmth.

M, L, XL, 2XL | 0679 | \$59

Available with Key-Rite and Touch-Rite Nib.

See pg. 64 for details.

b.



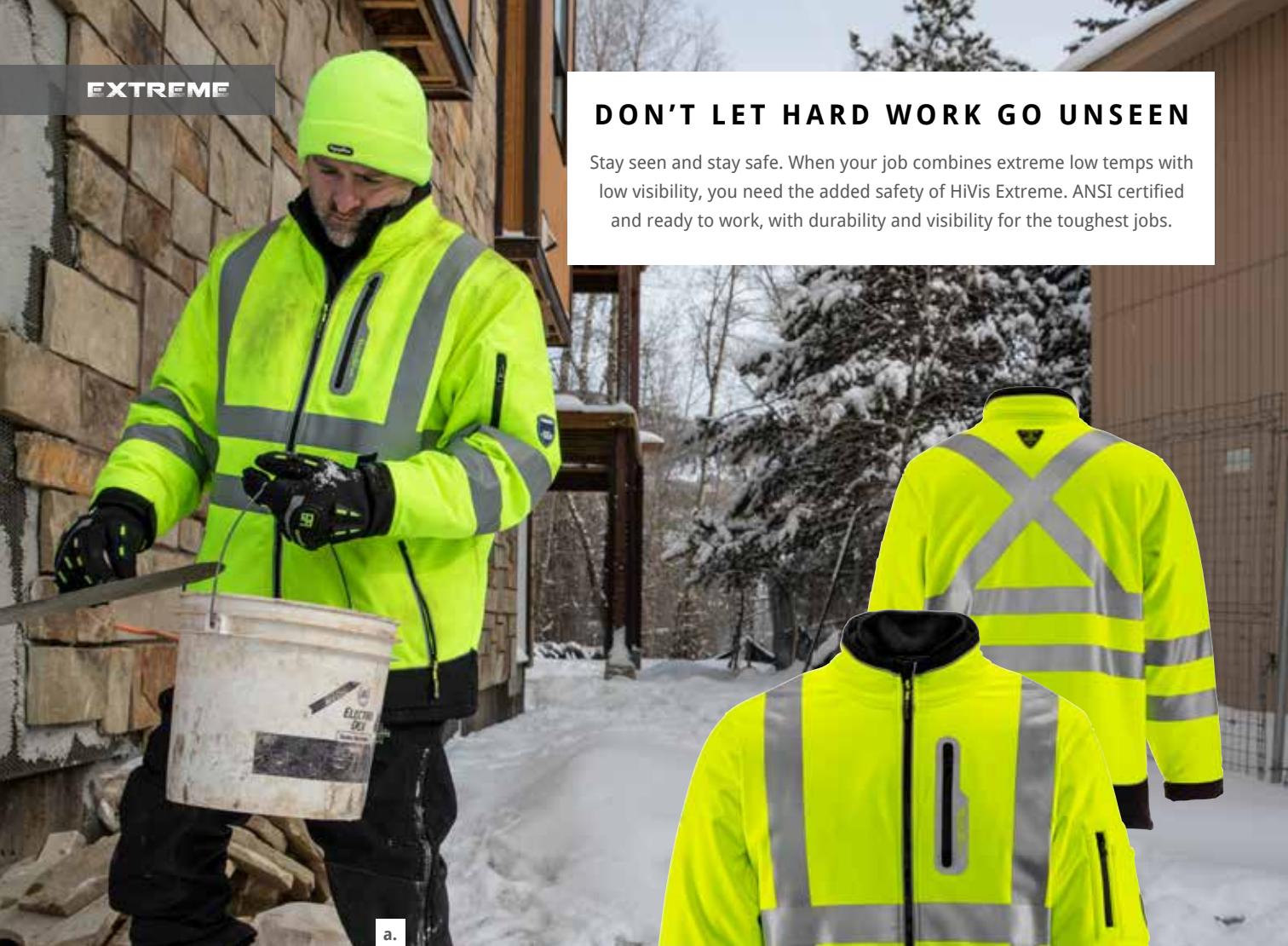
Pre-curved, ergonomic fit



EXTREME

## DON'T LET HARD WORK GO UNSEEN

Stay seen and stay safe. When your job combines extreme low temps with low visibility, you need the added safety of HiVis Extreme. ANSI certified and ready to work, with durability and visibility for the toughest jobs.



-60°F  
comfort rating  
-51°C

### a. HiVis Extreme Softshell Jacket

The ultimate protection for extreme conditions with the added safety of ANSI certified HiVis features. Reflective tape is bonded, not sewn, so it won't peel off with day-after-day use.



Lime | S-5XL | 0796 | Starting at \$218



a.



b.

-50°F to 0°F  
comfort rating  
-46°F to -17°F  
extreme

### b. Extreme Freezer Pull-On

Protection down to -50°F paired with extreme comfort make these the ultimate work boots. Easy to kick off after a long day on the job.

Full 7-14 | 192 | \$207

Featuring VitaComfort<sup>®</sup>, see page 76 for details.







EXTREME



a.

### a. HiVis Extreme Softshell Bib Overalls

These ANSI Class E bibs offer protection down to -60°F. Take your protection to the extreme with abrasion-resistant knee patches, high torso coverage, and adjustable waist and suspenders.



Lime/Black | S-5XL | 0797 | Starting at \$218



### b. Extreme Freezer Mitt

With the added warmth of a mitt design, these gloves still offer impact protection, Thinsulate® and durable construction so you get extreme comfort and warmth.

M, L, XL | 0617 | \$59



**You're Up for Any Challenge.**  
We've got the gear to help you conquer anything.



Performance-Flex innovates the way you move in insulated clothing with a ribbed design fabric that expands with your body's movements.

a.



### a. Extreme Hybrid Sweatshirt

The Extreme Hybrid Sweatshirt is ready to work and tough—we're talking "give us your best shot" tough. With Performance-Flex on the elbows for greater freedom of movement, the warmest sweatshirt out there allows you to tackle any job, even in frigid temperatures.



Black | S-5XL | 8480 | Starting at \$135



Stretch



Breathable



Water-Repellent



Performance-Flex

b.



### b. Extreme Dual-Layer Clava

Your face, head and neck deserve the best protection. With dual-layer Polartec® fleece, you get extreme warmth and full protection.



Black | S/M, L/XL | 6480 | \$37



Dual-Layer



Recycled Materials



c.

### c. Extreme Sock

Step into your day with extreme confidence. Breathable, durable, thick, warm and moisture-wicking – these socks have it all.

S/M, L/XL | 1030 | \$25



Breathable



Stretch



Moisture-wicking



# EXTREME COMFORT PROTECTION & STYLE

Whether you're a ranch hand or warehouse manager, you want protection that you can wear no matter what you're doing. Extreme can handle the wear and tear of the job while still looking good. The Extreme Collection offers complete head-to-toe protection, from headwear down to socks and boots.

EXTREME

a.

a.



## a. Extreme Sweater Jacket

Just because it's work doesn't mean you can't look good. Tough but comfortable, with protection against freezing temps. This good-looking jacket's day doesn't have to end when the shift does.



Gray | S-5XL | 0780 | Starting at \$128



## b. Women's Extreme Sweater Jacket

Stylish enough for date night, strong enough for your day job. With a cozy inner lining, removable hood and a wind-tight, water-repellent outershell, you'll stay warm all day and all night.



Gray | S-3XL | 9480 | Starting at \$128



b.



## THE GOLD STANDARD

Get the gold standard in cold protection. The 54 Gold Collection combines over 65 years of cold gear know-how with high-performance designs to give you the ultimate protection from cold temps down to -50°F. Lightweight AirBlaze™ insulation and Performance-Flex team up to help you move freely while you crush your to-do list. The stylish gold WarmPlus graphene honeycomb lining traps extra body heat, so you stay warm and productive, no matter the brutal conditions.



a.

### a. NEW 54 Gold Jacket

It's no ordinary jacket because you don't face ordinary conditions. The combination of our lightweight insulation with our new WarmPlus graphene lining extends your protection against the cold without the bulk—so you're warm, comfortable and able to move freely to tackle your day.

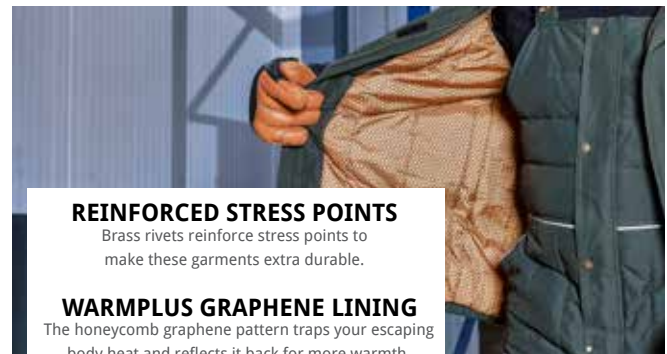


Dark Green | S-5XL | 8354 | Starting at \$240



#### AIRBLAZE™ INSULATION

All the warmth but 40% lighter. AirBlaze™ lets you work without the weight.



#### REINFORCED STRESS POINTS

Brass rivets reinforce stress points to make these garments extra durable.

#### WARMPLUS GRAPHENE LINING

The honeycomb graphene pattern traps your escaping body heat and reflects it back for more warmth.





#### WARMPLUS GRAPHENE LINING

Our WarmPlus graphene lining cuts to the chase. It warms up 4x faster and keeps you 24% warmer than traditional linings.

#### b. NEW 54 Gold Bib Overalls

These overalls raised the bar for comfort with a super warm lining and lightweight insulation—a combination that protects well below zero without being bulky. With Performance-Flex at the knees for better movement, you're set to tackle your to-do list all in one warm, durable pair of overalls.



Dark Green | S-SXL | 7354 | Starting at \$240



#### c. NEW 54 Gold Gloves

Built from classic designs, updated with high-performance innovation for getting it done, job after job.

M, L, XL | 2960 | \$81



Waterproof



AirBlaze®



Performance Flex



Recycled Materials



Pre-curved, ergonomic fit



c.

IRON-TUFF®

## PROVEN IN THE COLD FOR OVER 60 YEARS

Since 1954, hard-working people have trusted Iron-Tuff® garments to protect them in subzero temps. From the Alaska Pipeline to every step of getting food to America's tables, Iron-Tuff® has been there. Extreme durability, legendary warmth – it's the original way to Master the Cold®.



Bound seams seal out cold air and drafts plus add crazy-strong durability for years of use.



Your jacket, bibs or coveralls won't snap under the pressure of the day thanks to reinforced brass rivets at key stress points.



The tough outer layer is wind-tight and water-repellent so you have added protection from whatever the day throws at you.

a.

### a. Iron-Tuff® Polar

Durable, warm and ready to work, the Polar jacket's got your back. Heavy-duty zippers will stand up to repeated use. Keep the mobility without losing the warmth with the waist-length Iron-Tuff® Polar.

Meets EN 342:2017 Protective Clothing - Protection Against Cold: 0.382(B) | 3 | X



Navy | S-5XL | 0322 Regular and Tall | Starting at \$88



b.



### b. Iron-Tuff® Winterseal™

Seal out the cold no matter how low the temperature drops. The WinterSeal™ offers industrial strength protection with abrasion resistance, bound seams, brass rivet reinforcements and more.



Navy | S-5XL | 0361 | Starting at \$150

### VITACOMFORT® BOUNCE MIDSOLE

Our new VitaComfort® Bounce midsole in the Iron-Tuff® Hiker helps you keep that bounce in your step, even after a long day on your feet. The advanced material absorbs shock, cushioning your foot as it makes contact with the floor. Your feet will thank you.



c.



### c. NEW Iron-Tuff® Hiker

Get a heavy-duty work boot that's tougher than a \$2 steak but as comfortable as your favorite recliner on a Sunday afternoon watching football.

Full 7-14, Half 8½-11½ | 1285 | \$179

Featuring VitaComfort®, see page 76 for details.







IRON-TUFF®



### a. Iron-Tuff® Ice Parka

The only Iron-Tuff® jacket with a sewn-on hood, the Ice Parka is ready to shield you from tough, cold conditions. Brave the day with heavy-duty warmth and durability.



Navy, Sage | S-5XL | 0360 | Starting at \$152



### b. Iron-Tuff® Siberian™

Tougher than the job you're doing, the Siberian™ can handle subzero temps and daily wear and tear.

Meets EN 342:2017 Protective Clothing - Protection Against Cold: 0.387 (B) | 3 | X



Navy | S-5XL | 0358 Regular and Tall | Starting at \$121



### c. Women's Iron-Tuff® Coat

Anything they can do, you can do warmer. The same toughness and warmth as the rest of Iron-Tuff® but cut for women. The best fit means more comfort, and more comfort means you can focus on the job and get more done.



Navy | XS-3XL | 0323 | Starting at \$108



### d. Iron-Tuff® Sock

Naturally warm and moisture wicking, these socks are also extra durable. Tough days are no match for this level of comfort and protection.

S/M, L/XL | 1040 | \$19





## Tough it Out With Iron-Tuff®

Proven in the cold for over 65 years.



### a. **NEW** Iron-Tuff® Pants

The cold has met its match. These tough pants are built to last and keep you comfortable in subzero temps so you can take care of business. [See our suspenders on page 35.](#)



Navy | S-5XL | 7322 Regular, Short and Tall | Starting at \$108

b. **Iron-Tuff® Bib Overalls** | Navy, Sage | S-5XL | 0385 Regular, Short and Tall | Starting at \$129 | [See HiVis version on page 49](#)

c. **Iron-Tuff® Low Bib Overalls** | Navy, Sage | S-5XL | 0345 Regular, Short and Tall | Starting at \$115

d. **Iron-Tuff® Women's Bib Overalls** | Navy | S-3XL | 0355 | Starting at \$115



IRON-TUFF®



a.

## COMFORT ALL OVER

Complete protection, supreme durability. Iron-Tuff® Coveralls give you all-over warmth in one tough garment. You can search, but you're not going to find such tough, long-lasting coveralls that will protect down to -50°F. Work in confidence, comfort and warmth in any frigid environment.



c.



### c. Iron-Tuff® Insulated Glove

With 4 times the strength of natural leather, these gloves can take on even the toughest tasks no matter how low the temperature drops.

M, L, XL | 2860 | \$44



Pre-curved, ergonomic fit

- a. Iron-Tuff® Coveralls | Navy, Sage | S-5XL | 0344 Regular, Short and Tall | Starting at \$210  
b. Iron-Tuff® Coveralls with Hood | Navy, Sage | S-5XL | 0381 Regular, Short and Tall | Starting at \$233

POLARFORCE™

## OUTLAST AND OUTPERFORM

Working in the cold you have to worry about two things – staying warm and getting the job done. If your gear doesn't let you bend, reach and move, you won't get it done on time. PolarForce® with Performance-Flex – comfort rated down to -40°F – gives you freedom of movement to perform at the highest levels, earn the MVP award and get home safe – all while being protected from the cold and looking good to boot.

a.



### a. PolarForce® Jacket

Performance-Flex at key flex points. Grip Assist on the sleeves. -40°F protection throughout. The PolarForce™ Jacket makes you unstoppable. Meets EN 342:2017 Protective Clothing - Protection Against Cold: 0.430(B) | 3 | X



Charcoal/Black | S-5XL | 8140 Regular and Tall | Starting at \$188



Performance-Flex innovates the way you move in insulated clothing with a ribbed design fabric that expands with your body's movements.





### b. PolarForce® Bib Overalls

These bibs were made for moving. Kneel, bend, twist, reach, stretch – with Performance-Flex to enhance freedom of movement and abrasion-resistant features, you won't be held back from peak performance. Prevent plumber's crack.

Meets EN 342:2017 Protective Clothing - Protection Against Cold: 0.430(B) | 3 | X



Charcoal/Black | S-5XL | 7140 Regular and Tall | Starting at \$188



### c. NEW PolarForce® Pants

You don't compromise when it comes to hard work. Neither do these pants. Get ultimate comfort and performance all in one durable garment with Performance-Flex on the knees for greater mobility and a built-in belt for the perfect fit. [See our suspenders on page 35.](#)



Charcoal/Black | S-5XL | 7340 | Starting at \$180



POLARFORCE™

## POLARFORCE® PERFORMANCE

Dig a ditch. Manage inventory. Unload a shipment. Mend the fence. Whatever items are on your to-do list, you can check them off with PolarForce®. Get the job done quickly, safely and right so you don't miss the important things at home.

### SPECIAL FEATURES



Grip Assist on sleeves prevents objects from slipping as you handle them.



Customize your protection with the detachable hood.



Add the fur trim when you want added warmth.



Featured on both Men & Women's Hooded Parka

a.



### a. PolarForce® Hooded Parka

The detachable hood with removable fur trim means you can customize your protection to match the conditions. Make the cold fear you with the lasting warmth and style, plus more protection with the longer style of a parka.



Charcoal/Black | S-5XL | 8340 | Starting at \$225



b.



### b. PolarForce® Glove

You have maximum warmth and control with these gloves featuring Performance-Flex for flexibility and even touchscreen capabilities on the thumb and forefinger. M, L, XL | 0518 | \$44



Pre-curved, ergonomic fit

c.



### c. PolarForce® Balaclava

Wear as a full mask, gaiter or open face for maximum flexibility as you go throughout your daily activities. Made from Polartec® fleece for great comfort and warmth.



Black | S/M, L/XL | 6440 | \$29







### a. Women's PolarForce® Hooded Parka

Get warmth that can change with the conditions.

Doesn't matter if you're a floor supervisor or heading a construction crew, you'll have the protection you need.



Charcoal/Black | S-3XL | 8540 | Starting at \$225



a.

### c. NEW PolarForce® Insulated Reflective Cap

Protect your noggin from the cold that comes with icy outdoor projects or long, freezer shifts. Thinsulate™ insulation keeps you seriously warm while reflective accents help you stand out in low visibility conditions.



Black | One Size Fits All | 6340 | \$27

c.



b.



### b. PolarForce® Mitt

High performance in a mitt? Oh yeah. With Performance-Flex, touchscreen capability on the thumb, and Grip Assist on the palms, you're ready to work.

S, M, L, XL | 2830 | \$37



d.



### d. PolarForce® Sock

Wrap your feet in comfort thanks to advanced construction that allows a cushioned sole paired with a breathable top. High merino wool content controls moisture and provides warmth.

S/M, L/XL | 1020 | \$24



## Don't Sweat the Small Stuff.

Nothing can throw a wrench in your day when you've got the right protection.



### a. NEW PolarForce® Hybrid Sweatpants

Serious comfort paired with a hard-working attitude, these sweats take performance to the next level. Prevent plumber's crack. [See our suspenders on page 35.](#)



Black | S-5XL | 7440 | Starting at \$108



### b. PolarForce® Sweatshirt

3 Layers of cold protection combined with Performance-Flex and Grip Assist give you a secret weapon. Fight the cold and be a rock star at work with the PolarForce® Sweatshirt. HiVis version available for added safety in high traffic or low light areas. Soil-resistant Teflon® coating available on HiVis sweatshirt only.



Black, Lime/Black | S-5XL | 8440 | Starting at \$108



The special ribbed design of Performance-Flex in the PolarForce® Sweatshirt expands as you bend or extend your elbows, giving you more flexibility and freedom of movement.





a.



### a. PolarForce® Hybrid Fleece Jacket

All fleece isn't created equal. We prove it with the PolarForce® Hybrid Fleece Jacket. It's going to keep you warm and take whatever abuse you throw at it. It won't get worn out and fray like those run-of-the mill fleece jackets that always disappoint.



Black | S-5XL | 9740 | Starting at \$87



### b. PolarForce® Max

Finally, work boots that don't skimp on comfort! Waterproof and armed to protect against the cold with Thinsulate® and a DRI-BLAZE® lining.

Full 7-14, Half 8½-11½ | 1140 | \$184

Featuring VitaComfort®, see page 76 for details.



b.



c.



### c. PolarForce® Hiker

Get protection against the cold and against injury with this waterproof hiker-style boot featuring ultra-slip-resistant soles for maximum protection.

Full 5-13, Half 5½-11½ | 1240 | \$173

Featuring VitaComfort®, see page 76 for details.





a.



b.



**a. NEW ErgoForce® Waterproof Low Bib Overalls**

When you're knee deep in the cold mud, there's no going back. These tough bib overalls are designed for maximum comfort on rough jobs with a better fit and range of motion. Stay warm and dry with 100% waterproof protection.



Black | S-5XL | 8086 | Starting at \$128

**b. NEW ErgoForce® Waterproof Jacket**

Cold and wet? Not in this jacket. It's tough, warm and 100% waterproof so it holds its own against pop-up showers during long motorcycle rides or miserable job sites.



Black | S-5XL | 8043 | Starting at \$128





@refrigiwear



@refrigiwearusa

Follow us on Instagram & Facebook  
to see our tough gear in action with  
posts like these.



# GET THE EDGE AT WORK

Push your performance over the top with RefrigiWear's® Freezer Edge® Collection. Harsh conditions and subzero temperatures won't stop you from juggling every task the boss throws at you or you take on yourself. Freezer Edge® keeps you in action and won't fall apart after heavy use like other wannabe brands.



## a. Freezer Edge® Jacket

Your job is tough enough even without the cold you face every day. But when the cold can't bother you, you can't be stopped. Features a comfortable, lined collar, HiVis coloring and reflective tape, plus a Teflon® coating to fight staining.



Lime/Gray | S-5XL | 8250 | Starting at \$150



## b. NEW Freezer Edge® Hooded Sweatshirt

Fight the cold with three layers of heat-trapping power to keep you warm. HiVis panels, reflective piping and a RefrigiWear® logo on the left sleeve help you stand out when it matters most. Plus, Grip Assist on sleeves helps prevent anything from falling from your grasp. Finally, a sweatshirt that works as hard as you do.



Black/Lime | S-5XL | 8450 | Starting at \$115



## c. NEW Freezer Edge® Glove

Use your touchscreen devices and stay warm at the same time in these bad boys with tough, durable palm and finger pads that prevent injury while you work. Productivity: 1, Cold: 0. M, L, XL | 2800 | Starting at \$38







a.

FREEZER EDGE®



b.



### a. Freezer Edge® Bib Overalls

You still need to get the job done—for the boss, for yourself or for whoever needs you today—even when it's frigid. Get lasting protection with the Freezer Edge® Bib Overalls, featuring draft protections and heavy-duty durability.



Gray/Lime | S-5XL | 7250 | Starting at \$150



### b. NEW Freezer Edge® Coveralls

At this level of full-body protection, even subzero temps won't make you flinch. With ANSI Class 3 compliance for safety, a soil-resistant Teflon® coating, plenty of pockets and serious warmth, you'll have ultimate protection and functionality that's unmatched.



Gray/Lime | S-5XL | 7550 | Starting at \$240



c.



### c. Tungsten Hiker

Strong like tungsten, this durable crossover with a stylish design features lightweight construction to reduce foot fatigue.

Full 7-15, Half 8½-11½ | 122 | \$167

Featuring VitoComfort®, see page 76 for details.



## DON'T GET WEIGHED DOWN THE BY COLD

When workers aren't weighed down they accomplish amazing things. Our innovative **AirBlaze™ insulation** is eco-friendly, incredibly light and supremely warm. Pairing AirBlaze™ with a tough outershell, we've created lightweight gear that protects in extreme temperatures. Durable, flexible and crazy warm, Frostline® is the future of protection from freezing temps.



a.



There is nothing tougher, lighter or warmer than our AirBlaze™ insulation. This eco-friendly insulation, made from sustainable materials, provides all the warmth at half the weight – so you can work harder in colder conditions.

### Performance-Flex

More mobility and flexibility thanks to the ribbed design on side and knees that expands as you stretch, extend, bend and move.

b.



### a. Frostline® Jacket

You've never seen a puffer jacket like this before. So lightweight, you'll forget you're wearing it. So durable, you can tackle any job. So warm, you'll make the cold shiver in fear. Features Performance-Flex in key areas to give you more flexibility.



Navy/Black | S-5XL | 8120 | Starting at \$135



### b. Frostline® Bib Overalls

When you have to do precision work in subzero temps, protection can make that hard. Luckily, you can reach for these bibs and get to work without being weighed down or without restricted movement because of Performance-Flex.



Navy/Black | S-5XL | 7120 | Starting at \$135



c.



### c. Frostline® Cap

We paired the safety of reflective yarn with the warmth of a Polartec® fleece lining to give you the ultimate knit cap. One Size | 6320 | \$17





## Lighten the Load.

Don't let the stress of the day drag you down. Stay protected with Frostline®.



a.



### a. Frostline® Hooded Sweatshirt

High-impact jobs won't stop you. This tough sweatshirt offers 3 layers of protection against the cold. It also protects against the heavy-duty wear and tear of your day with abrasion-resistant panels on shoulders and kangaroo front pocket.



Navy/Black | 5-5XL | 8420 | Starting at \$102



b.



### b. Frostline® Glove

Get full protection in a super durable glove. Insulation extends through the cuff for added warmth and the waterproof outershell keeps your hands dry.

M, L, XL | 0291 | \$44



c.



### c. Frostline® Hiker

Get safety and style in one hard working boot. This waterproof hiker will keep you comfortable and protected.

Full 7-14, Half 8½-11½ | 1160 | \$167

Featuring VitaComfort®, see page 76 for details.



## SOFTSHELL



## TOUGHNESS LIKE NO OTHER

Get a modern, athletic style and industrial strength durability with the RefrigiWear® Softshell Collection. Softshell is breathable, flexible and less bulky than other materials – so you can do whatever needs doing. Our softshell garments let you work hard without weighing you down or restricting movement and come with plenty of practical functionality.



### a. Insulated Softshell Enhanced Visibility Jacket

Knowing you're safe at work means you can focus on what you're doing. Our Enhanced Visibility Softshell has the addition of segmented reflective tape for added protection and to make sure you get home safe.



Black/Charcoal | S-5XL | 8490 | Starting at \$122

### b. **NEW** Two-Tone HiVis Insulated Softshell Jacket

You battle tough jobs, but your gear doesn't have to show it. Fight off dirt and grime after a long day in this two-tone design. With serious heat-trapping power and HiVis accents to help you stand out, you'll get it all done in serious comfort and safety.



Black/Lime | S-5XL | 8220 | Starting at \$135

### c. Insulated Softshell Jacket

Softshell lets you move so you can stay warm no matter what you're doing: chopping wood, loading pallets or anything in between. Tough enough to handle the job every day, but flexible enough to let you move as much as you need. Protection down to -20°F so you can get to work even when the thermometer is below 0.



Black/Charcoal, Navy/Charcoal | S-5XL | 0490 | Starting at \$108

[See HiVis versions on page 48](#)





### a. Lightweight Softshell Jacket with Hood

Rated to 30°F, this jacket is perfect for temps hovering around freezing or when conditions call for extra head protection. Just as tough as our other softshell, ready for less extreme temps.



Black | S-5XL | 9151 | Starting at \$72



### b. Softshell Jacket

The same great features of the Insulated Softshell Jacket with a little less insulation. Rated down to 20°F, this jacket offers lightweight comfort and warmth plus superb flexibility and durability.



Black | S-5XL | 0491 | Starting at \$91



### c. Insulated Softshell Glove

Dexterity. Grip. Warmth. Durability. Comfort. We combined them to give you superior performance in a great looking style.

M, L, XL | 2631 | \$37



d.



### d. Softshell Vests

Vests are the perfect way to keep your core warm while keeping a full range of motion for your arms. Our softshell vests are tough and work ready.

Insulated Softshell Vest rated to -20°F.

Softshell Vest rated to 20°F.



**Insulated Softshell Vest** | Black | S-5XL | 0492 | Starting at \$73

**Softshell Vest** | Black | S-5XL | 0494 | Starting at \$64



d.

## SOFTSHELL

### SOFTSHELL BIB OVERALLS

Flexible but tough, Insulated Softshell Bibs offer high torso coverage for extra protection. Heavy-duty features to fight everyday wear and tear paired with warmth down to -20°F mean you are ready for the whole shift – and then some.

Available with and without enhanced visibility tape.



b.



a.

a. Insulated Softshell Bib Overalls | Black | S-5XL | 0495 | Starting at \$108

b. Insulated Softshell Enhanced Visibility Bib Overalls | Black | S-5XL | 7495 | Starting at \$122



# Stop Freezing Your Butt Off.

Softshell pants for tough defense against the cold.



## a. NEW HiVis Insulated Softshell Pants

Our hardest working softshell pants are ANSI Class E compliant to keep you warm, comfortable and safe, even in low visibility conditions. The two-tone outershell and soil-resistant Teflon® coating work together to prevent staining and resist grime from the toughest jobs.



Lime/Black | S-5XL | 7496 | Starting at \$135



## b & c. Softshell Pants

With abrasion-resistant knee and heel patches, plus protection when it's below freezing, Softshell Pants are perfect when you want to protect your lower body in cold conditions.

Insulated Softshell rated to -20°F.

Softshell rated to 20°F.



**b. Insulated Softshell Pants** | Black | S-5XL | 9440 | Starting at \$101

**c. Softshell Pants** | Black | S-5XL | 9441 | Starting at \$87

d. NEW RefrigiWear® Suspenders | Keep your pants up for the best fit. No one likes a plumber's crack. | Black | One Size Fits All | 0600 | Starting at \$22

COMFORTGUARD™



a.

a.

### a. ComfortGuard™ Utility Jacket

As trustworthy as Batman's utility belt, the ComfortGuard™ Utility Jacket gives you ultimate functionality in the field. With an extended back for extra protection from the cold, 8 pockets and heavy-duty construction, this jacket has everything you need for work.



Black | S-4XL | 0630 | Starting at \$106

### b. ComfortGuard™ Service Jacket

You can take the hits and keep on working. So can this rough-n-tough Service Jacket. The waist-length design is great for sitting if you operate heavy equipment all day while the drawstring hood protects against the elements.



Black | S-4XL | 0620 | Starting at \$106

b.







### a. ComfortGuard™ Coveralls

Cold. Grime. Wind. Nothing can get to you when you have the protection of the ComfortGuard™ Coveralls. With a tool loop, brass rivet reinforcements, 6 pockets, plus hip-length zippers for easy on/off, you've got full, comfortable coverage for any job.



Black | S-5XL | 0640 | Starting at \$180

### b. ComfortGuard™ Bib Overalls

Get ComfortGuard™ durability in bibs that were designed for maximum coverage without sacrificing mobility. Pair with the Service Jacket for the ultimate protection and you're ready to shrug off the cold and get to it.



Black | S-4XL | 0685 | Starting at \$122

## CHILLBREAKER™ PLUS



b.



a.

### a. ChillBreaker™ Plus Jacket

Who needs a tool box? With 16 pockets, you can carry everything you need. Plus, a ripstop outershell, protection to 0°F and a wind-tight finish mean you don't have to slow down when the temps go way...way down.



Royal Blue/Black | S-5XL | 8050 | Starting at \$115

### b. ChillBreaker™ Plus Bib Overalls

You don't stand still when you work. That's why these bibs offer articulated knees, stretch side gussets and abrasion patches on the knees and heels. Don't worry about wear and tear – they're built to last.



Royal Blue/Black | S-5XL | 7050 | Starting at \$128

c.



### c. ChillBreaker™ Plus Cap

Comfortable fit with reflective stripe woven directly into the fabric for added safety and durability.



Blue/Black | One Size | 6060 | \$15



# DON'T GET THE CHILLS

It doesn't matter if you're handling thousands of frozen pizzas or working through a frost. You need gear that can keep you warm. ChillBreaker™ offers lots of convenient pockets, protection down to 0°F and a surprisingly lightweight yet durable construction that helps you stay in motion.

CHILLBREAKER™



## ChillBreaker™ Jackets

The chill can't get to you with ChillBreaker™ on your side. Fleece-lined collars, durable, wind-tight and water-repellent outershells plus protection to 0°F make the ChillBreaker™ Jackets a great choice. Available in two styles.



**a. ChillBreaker™ Parka** | Navy | XS-5XL | 0442 | Starting at \$94

**b. ChillBreaker™ Jacket** | Navy, Black | S-5XL | 0450 | Starting at \$61



a.



b.



c.

d.

## c. ChillBreaker™ Bib Overalls

Perfect to pair with a sweatshirt and still have movement, the ChillBreaker™ Bib Overalls are ready to jump into the thick of it with you, even when temps drop below freezing.



Navy | XS-5XL | 0485 | Starting at \$102

## d. ChillBreaker™ Coveralls

The temperatures don't need to be extreme for you to need complete coverage. The ChillBreaker™ Coveralls keep the abuse of the day out while keeping warmth and comfort in.



Navy | XS-5XL | 0440 | Starting at \$135

## CHILLSHIELD™

10°F  
comfort rating  
-12°C



### NEW ChillShield™ Jacket

A tough, lightweight jacket that packs a warm, heavy-duty punch? Yup, and this one does the job without all the extra bulk and has bonus features like abrasion-resistant panels for added durability and Performance-Flex for freedom of movement. Warm, tough and comfortable never looked so good.



Gray | S-5XL | 8650 | Starting at \$108

### AIRBLAZE™ INSULATION

All the warmth but 40% lighter. AirBlaze™ lets you work without the weight.





## THE STRONG & SILENT TYPE OF GEAR

Above freezing temps are still dang cold! ChillShield™ protects in chilly temps from 40°F down to 10°F with lightweight AirBlaze™ insulation that keeps you warm without the bulk. It's tough enough to take on rough work around the farm, shop or on the job site – your gear shouldn't make it harder. Best of all, the strong, durable outershell is made of soft material so you won't be annoyed by your gear making so much noise as you work! It will just be you and your warm, hardworking thoughts.



### NEW ChillShield™ Pants

Warm and comfortable? There's no doubt. But these pants are off the charts when it comes to performance. With abrasion-resistant panels on the pockets, knees and inner leg for increased durability plus an elastic waist band for a comfy fit, you'll have the best—and most comfortable—defense for the tough jobs you tackle. Prevent plumber's crack. [See our suspenders on page 35.](#)



Gray | S-5XL | 7750 | Starting at \$108

CHILLSHIELD™

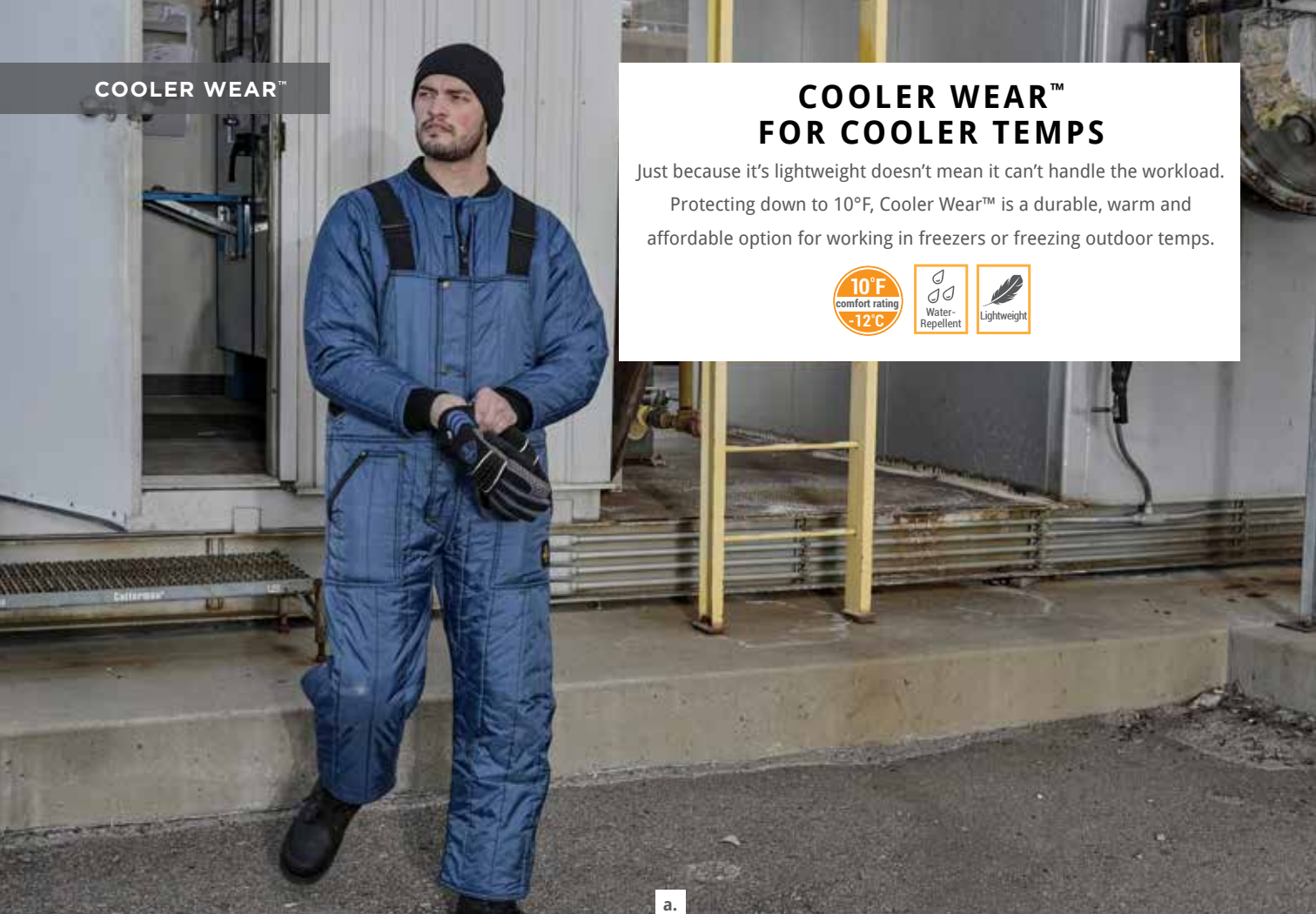


## COOLER WEAR™

## COOLER WEAR™ FOR COOLER TEMPS

Just because it's lightweight doesn't mean it can't handle the workload.

Protecting down to 10°F, Cooler Wear™ is a durable, warm and affordable option for working in freezers or freezing outdoor temps.



a.

### a. Cooler Wear™ Bib Overalls

Cut for comfort so you can get the job done without distraction. Bend, kneel, reach and more in total comfort. Lightweight protection that can handle heavy-duty jobs.



Blue | S-5XL | 0585 | Starting at \$95

### b. Cooler Wear™ Pullover Jacket

This pullover combines the best of sweatshirts and jackets into the ultimate option for comfort and warmth on the job. With a ½ zip front closure and side seam zippers, it's the perfect fit for cool conditions.



Blue | S-5XL | 0580 | Starting at \$30



**CLEARANCE**  
GRAB IT WHILE IT LASTS



Side zippers make it easier to get this pullover on and off.





## COOLER WEAR™



a.

b.



c.



d.



a. **Cooler Wear™ Jacket** | Blue | S-5XL | 0525 | Starting at \$60

b. **Cooler Wear™ Frock Liner** | Blue | S-5XL | 0534 | Starting at \$75

c. **Cooler Wear™ Vest** | Blue | S-5XL | 0599 | Starting at \$44

d. **Cooler Wear™ Trousers** | Blue | S-5XL | 0526 | Starting at \$53 | Prevent plumber's crack. [See our suspenders on page 35.](#)

ECONO-TUFF®



## DON'T GIVE UP - GET TUFF

Lightweight, warm, durable and a great value — Econo-Tuff® garments provide the best of all worlds. The tough denier outershell and fiberfill insulation give you lasting protection down to 15°F. Stands up to drafts and abrasions so you can power through your day.



- a. **Econo-Tuff® Frock Liner** | Navy | S-5XL | 0934 | Starting at \$58
- b. **Econo-Tuff® Jacket** | Navy | S-5XL | 0925 | Starting at \$48
- c. **Econo-Tuff® Vest** | Navy | S-5XL | 0912 | Starting at \$39
- d. **Econo-Tuff® Bib Overalls** | Navy | S-5XL | 0985 | Starting at \$72





# A TOUGHER WAY TO PUFFER

Puffer jackets are a popular style, but aren't ideal for work because of their bulk and thin outershell. Not so with our Quilted Jackets. More durable than standard puffers, these jackets aren't just stylish – they're hard workers.

## DIAMOND QUILTED



### a. Diamond Quilted Jacket

This isn't a wimpy puffer. Made with RefrigiWear's® signature toughness, the Diamond Quilted Jacket doesn't just look good – it works hard. The chest pocket can fit any smart phone, and the fleece-lined collar seals out drafts.



Black | S-5XL | 0444 | Starting at \$79



### b. Lightweight Diamond Quilted Jacket

The Lightweight Diamond Quilted Jacket offers great style and dependable strength at a higher temperature comfort rating. Work hard then relax in this awesome looking and more durable upgrade on a traditional style.



Black | S-5XL | 8705 | Starting at \$60



## Tell Mother Nature to Take a Hike.

From fierce winds to raging rains – you’ve got it covered.



### 3-in-1 Rainwear

Weather changes in a flash – get protection that rolls with the punches. Our 3-in-1 Jackets let you customize your protection. The outer jacket is lightweight and 100% waterproof, with a roll-in hood you can zip into the collar when not in use. The inner jacket gives you warmth in a puffer style. Wear just the outer when it is wet, just the inner when it is cold and combine the two for those unbearable frigid, rainy conditions.



**a. HiVis 3-in-1 Rainwear Jacket** | Lime/Black | S-5XL | 9178 | Starting at \$177



**b. 3-in-1 Rainwear Jacket** | Black | S-5XL | 9188 | Starting at \$162

### Inner jackets

This jacket doesn't need to hide. With a great fit, stylish design and lots of warmth, the quilted inner jackets are ready to be worn on their own.







**CLEARANCE**  
GRAB IT WHILE IT LASTS

a.

### a. Lightweight Rainwear Jacket

Temps don't have to be below freezing for you to be uncomfortable. Fight off Mother Nature with the Lightweight Rainwear Jacket. Waterproof but breathable, with detachable hood, this jacket is perfect for hard rain in mild temps.



Black | S-5XL | 9190 | Starting at \$50



b.

### b. Midweight Rainwear Set

Rain can't get the best of you with the RefrigiWear® Rainwear Set. The waterproof pants and jacket come in a storage bag so you can always have protection ready – even when the weatherman was wrong.



Lime | S-5XL | 0195 | Starting at \$41



Folds easily into compact bag for storage



The American National Standards Institute (ANSI) establishes classifications for HiVis garments that can be used to enhance safety. Classifications are determined by the amount of background material (HiVis Orange or Lime) plus the amount of reflective material and its placement.



- a. **HiVis Extreme Softshell Jacket** | Details pg. 10 | Lime | S-5XL | 0796 | Starting at \$218
- b. **HiVis Insulated Softshell Bib Overalls** | Orange/Black, Lime/Black | S-5XL | 0497 | Starting at \$143
- c. **HiVis Extreme Softshell Bib Overalls** | Details pg. 11 | Lime/Black | S-5XL | 0797 | Starting at \$218
- d. **NEW Freezer Edge® Coveralls** | Details pg. 29 | Gray/Lime | S-5XL | 7550 | Starting at \$240
- e. **HiVis Insulated Softshell Jacket** | Lime | S-5XL | 0496 | Starting at \$143
- f. **HiVis Softshell Jacket** | Lime/Black | S-5XL | 9291 | Starting at \$112



See our entire line of HiVis items, designed so you can stay safe while you work.  
Visit [refrigiwear.com/HiVis](http://refrigiwear.com/HiVis)

-50°F  
comfort rating  
-46°C



a.

-20°F  
comfort rating  
-29°C



b.

-50°F  
comfort rating  
-46°C



c.



d.



e.



f.

a. HiVis Iron-Tuff® Jackcoat™ | Orange, Lime | S-5XL | 0342HV Regular & Tall | Starting at \$189

b. NEW HiVis Insulated Softshell Pants | Orange, Lime | S-5XL | 7496 | Starting at \$135 | Prevent plumber's crack. [See our suspenders on page 35.](#)

c. HiVis Iron-Tuff® Bib Overalls | Orange, Lime | S-5XL | 0385HV Regular, Tall & Short | Starting at \$196

d. PolarForce® HiVis Sweatshirt | Lime | S-5XL | 8440HV | Starting at \$122

e. HiVis Reversible Softshell Vest | Orange/Black Reversible, Lime/Black Reversible | S-5XL | 9449 | Starting at \$73

f. Midweight Rainwear Set | Lime | S-5XL | 0195 | Starting at \$40



### a. Extreme Hybrid Sweatshirt

The Extreme Hybrid Sweatshirt is ready to work, no matter the job. With Performance-Flex on the elbows for greater freedom of movement, the warmest sweatshirt out there allows you to tackle any job, even in frigid temperatures.



Black | S-5XL | 8480 | Starting at \$135



b.



### b. Extreme Sweater Jacket

Just because it's work doesn't mean you can't look good. Tough but comfortable, with protection against freezing temps, this jacket's tough for all day work and stylish enough for just everyday wear.



Gray | S-5XL | 0780 | Starting at \$128







a.



Follow Us on Instagram & Facebook  
See the gear in action with posts  
like this from @kschurrphoto

10°F  
comfort rating  
-12°C

### a. Women's Extreme Sweater Jacket

Looks great, feels even better and is tough enough to last season after season. Checks all boxes! With a cozy inner lining, removable hood and a wind-tight, water-repellent outershell, you'll stay warm all day and all night.



Gray | S-3XL | 9480 | Starting at \$128



b.

20°F  
comfort rating  
-7°C

### b. Women's Hybrid Fleece

This isn't some thin fleece that falls apart at the mere mention of "winter's coming." Comfort and warmth that can stand up to harsh conditions and rough days. Everyday protection that will last for years.



Black | S-3XL | 9720 | Starting at \$87





a.

20°F  
comfort rating  
-7°C

### a. PolarForce® Hybrid Fleece Jacket

All fleece isn't created equal. We prove it with the PolarForce® Hybrid Fleece Jacket. It's going to keep you warm and take whatever abuse you throw at it. It won't get worn out and fray like those run-of-the-mill fleece jackets that always disappoint.



Black | S-5XL | 9740 | Starting at \$87



b.



### b. NEW PolarForce® Hybrid Sweatpants

Serious comfort paired with a hard-working attitude, these sweats take performance to the next level.

Prevent plumber's crack. [See our suspenders on page 35.](#)



Black | S-5XL | 7440 | Starting at \$108





## You're a Force of Nature.

PolarForce® can keep up with the roughest and toughest.



Grip Assist on sleeves helps prevent slipping while handling large items.



Performance-Flex innovates the way you move in insulated clothing with a ribbed design fabric that expands with your body's movements.

### PolarForce® Sweatshirt

3 Layers of cold protection combined with Performance-Flex and Grip Assist give you secret weapons for mobility and grip. Fight the cold and be a rock star at work with the PolarForce® Sweatshirt. HiVis version available for added safety in high traffic or low light areas. Soil-resistant Teflon® coating available on HiVis sweatshirt only.

HiVis version available for added safety in high traffic or low light areas.



**c.** Black | S-5XL | 8440 | Starting at \$108

**d.** Lime/Black | S-5XL | 8440HV | Starting at \$122



## SHOW THE COLD WHO'S BOSS

Sweatshirts make it easy to fight the cold. Wear over a shirt, under a vest or jacket or even pair with bibs. With so many ways to wear them, they are always the right choice for the job.



a.

### a. **NEW** Freezer Edge® Hooded Sweatshirt

Fight the cold with three layers of heat-trapping power to keep you warm. HiVis panels on the shoulders, reflective piping and a RefrigiWear® logo on the left sleeve help you stand out when it matters most. Plus, Grip Assist on sleeves helps you keep your hold on items. Finally, a sweatshirt that works as hard as you do.



Black/Lime | S-5XL | 8450 | Starting at \$115



b.



### b. **Frostline®** Hooded Sweatshirt

High-impact jobs won't stop you. This tough sweatshirt offers 3 layers of protection against the cold. It also protects against the heavy-duty wear and tear of your day with abrasion-resistant panels on shoulders and kangaroo front pocket.



Navy/Black | S-5XL | 8420 | Starting at \$102





a.



### a. Insulated Quilted Sweatshirt

The best fit with the triple protection of 3 layers. Won't shrink in the wash, so you get warmth you can rely on and that will last. Soil-resistant Teflon® coating (on Lime only).



Black, Navy, Lime | S-5XL | 0488 | Starting at \$69



b.



### b. Thermal Lined Sweatshirt

Sometimes, a generic sweatshirt just won't make the grade. That's when you reach for our Thermal Sweatshirt with 2 layers of protection for when the temperature turns nasty.



Black, Navy | S-5XL | 0487 | Starting at \$58





a.

### a. Hoodie

Warmer and heavier than a standard sweatshirt, the RefrigiWear® Hoodie is a pre-shrunk pullover ready to tackle the day with you.



Black, Navy, Gray | S-3XL | 0486 | Starting at \$41



### b. HiVis Hooded Sweatshirt

When you need to be safe from more than just the cold, you need the ANSI Class 2 compliant HiVis Hooded Sweatshirt. With durable stitchless bonded tape, this sweatshirt is ready for the toughest jobs.



Lime | S-5XL | 0484 | Starting at \$64



b.



Made to Multitask.  
Perfect for any job, year round.



### Flex-Wear Base Layers

Build a foundation of warmth with high-performing base layers. 4-way stretch Flex-Wear material keeps you warm and allows you to move. It's the perfect option for when you need full mobility for work or even if you just need extra warmth. Available in shirt and pants.



**a. Flex-Wear Bottom** | Black | S-4XL | 088B | Starting at \$20

**FLEX-WEAR** Extremely comfortable, lightweight and flexible

**b. Flex-Wear Top** | Black | S-6XL | 088T | Starting at \$20

**FLEX-WEAR** Extremely comfortable, lightweight and flexible



### c. Flex-Wear Heavyweight Top

Our heaviest and warmest base layer, the Heavyweight Flex-Wear Top offers maximum cold protection. The 4-way stretch Flex-Wear material is paired with a brushed inner lining to keep you warm without sacrificing mobility.



Navy | S-5XL | 8180 | Starting at \$22

**FLEX-WEAR** Extremely comfortable, lightweight and flexible



### d. Snag-Proof Short Sleeve Polo

Fight sweat and everyday wear and tear. The Snag-Proof Short Sleeve Polo is moisture-wicking to keep you dry and made of tough material that won't tear from normal everyday grind.



Black | S-5XL | 9016 | Starting at \$23

## BUILT FOR WOMEN, BUILT FOR WORK

Whether you're working on a ranch, a construction site or freezing warehouse, the cold doesn't mean you get a day off. Poorly fitting clothes don't protect and they distract from the job at hand. Skip the frustration and get protection and fit designed just for you.



### a. Women's Pure-Soft Jacket

Soft to the touch but ready to work, the durable Pure-Soft Jacket has a detachable hood that can add protection when needed. Look good and handle harsh conditions on and off the job.



Black/Charcoal | S-3XL | 0473 | Starting at \$110



### b. Women's Extreme Sweater Jacket

Looks great, feels even better and is tough enough to last season after season. Checks all boxes! With a cozy inner lining, removable hood and a wind-tight, water-repellent outershell, you'll stay warm all day and all night.



Gray | S-3XL | 9480 | Starting at \$128



c.



### c. Women's Softshell Insulated Glove

You don't work as well if your gear doesn't fit. Get the fit designed just for you, plus enhanced grip on the palm, dexterity and warmth to up your performance.

S, M, L | 2630 | \$37





Customize your protection with the detachable hood. Add the fur trim when you want added warmth.



### a. Women's PolarForce® Hooded Parka

Get warmth that can change with the conditions. Doesn't matter if you're a floor supervisor or heading a construction crew in the frigid cold, you'll have the protection you need with this parka. Featuring Performance-Flex at key flex points for easy mobility and Grip Assist on the inner forearms to give you a firm grasp, the PolarForce® Hooded Parka is an on-the-job game-changer!



Charcoal/Black | S-3XL | 8540 | Starting at \$225



### b. Women's Insulated Softshell Jacket

Get the flexibility and toughness of RefrigiWear® Softshell in a jacket cut to fit you. With protection down to -20°F, you can knock out your task list, even in below-zero temps.



Black | S-3XL | 0493 | Starting at \$108





a.

**-50°F**  
comfort rating  
**-46°C**

### a. Women's Iron-Tuff® Coat

Anything they can do, you can do warmer. The same toughness and warmth as the rest of Iron-Tuff® but cut for women. The best fit means more comfort, and more comfort means you can focus on the job and get more done.



Navy | XS-3XL | 0323 | Starting at \$108



**20°F**  
comfort rating  
**-7°C**

### b. Women's Quilted Jacket

Industrial strength protection. Modern style. Comfortable fit. Stay warm in freezing temperatures so you can handle everything from driving a forklift and loading trucks to working on the farm or camping.



Black | S-3XL | 0423 | Starting at \$95



**20°F**  
comfort rating  
**-7°C**

### c. **NEW** Women's Quilted Pants

Get a leg up with our high-performance pants that help you stay warm and mobile. Climb or crouch your way to a job done right with Performance-Flex on knees for better freedom of movement and fit.



Black | S-3XL | 0420 | Starting at \$95



b.

c.

d.

d. **NEW RefrigiWear® Suspenders** | Keep your pants up for the best fit. No one likes a plumber's crack. | Black | One Size Fits All | 0600 | Starting at \$22





a.



### a. Women's Hybrid Fleece

This isn't some thin fleece that falls apart at the mere mention of "winter's coming." Comfort and warmth that can stand up to harsh conditions and rough days. Everyday protection that will last for years.



Black | S-3XL | 9720 | Starting at \$87



### b. Women's Softshell Jacket

Lightweight, breathable protection down to 20°F. Whether you are shoveling snow or packing pallets, this jacket will keep you protected in freezing temperatures.



Black | S-3XL | 0498 | Starting at \$85



b.



### a. Women's Iron-Tuff® Bib Overalls

Bend without breaking in these super durable bib overalls, cut to fit your shape. With the right fit, you can bend, kneel, reach and do whatever else needs doing. Pair with a sweatshirt or the Women's Iron-Tuff® Jacket, and you'll be protected no matter the temperature.



Navy | S-3XL | 0355 | Starting at \$115



### b. Women's Insulated Softshell Bib Overalls

Stop fighting with uncomfortable clothes all day. These bib overalls were designed specifically for women, with a square back and side gussets to provide a better fit. Warm, comfortable and perfect for whatever tasks you have to handle in the cold.



Black | S-3XL | 7123 | Starting at \$120



### c. Women's Quilted Bib Overalls

There's no one tougher than you out there. Get bib overalls that can handle what you face every day. They don't just handle the cold, they handle the wear and tear you'll put them through daily thanks to reinforced hems and Performance-Flex on the side and knees.



Black | S-3XL | 0425 | Starting at \$102





## PUT THE BEST FOOT FORWARD

In addition to products designed specifically for women, we offer a number of other products in women's sizes. Find the best gear, with the best fit for you, so you can get to work. Below are boots available in women's sizes.

### WOMEN'S FOOTWEAR



- a. **Women's Black Widow™** | Full 6-10, Half 6½-9½ | [VitoComfort®](#) | 136 | \$133
- b. **EnduraMax™** | Full 7-10, Half 6½-9½ | [VitoComfort®](#) | 129 | \$144
- c. **Ice Logger™** | Full 7-10, Half 6½-9½ | [VitoComfort®](#) | 132 | \$144
- d. **Crossover Hiker** | Full 7-10, Half 6½-9½ | [VitoComfort®](#) | 145 | \$133

## INNOVATIVE SOLUTIONS

Keypads and touchscreens are all too common now, but when you have to remove your gloves to use them, it defeats the purpose of even wearing them.

RefrigiWear® offers two solutions:

### TOUCHSCREEN SOLUTION TOUCH-RITE NIB



RefrigiWear's® exclusive Touch-Rite Nib works on both touchscreens and keypads, allowing employees to remain productive without removing their gloves.

### KEYPAD SOLUTION KEY-RITE NIB



RefrigiWear's® exclusive Key-Rite Nib works on keypads and pressure sensitive screens to help employees stay productive and protected while they work. Can be placed on any and as many fingers as needed.

#### AVAILABLE IN STYLES:

**T679** (Page 65)    **T282** (Page 67)



Located on the right index finger. Easy to unscrew and replace.



A pocket on the left glove allows for secure storage and easy access to replacement nibs.

#### AVAILABLE IN STYLES:

**K679** (Page 65)    **K353** (Page 66)

**K319**(Page 66)    **K282** (Page 67)

**K379** (Page 68)    **K279** (Page 69)



**-30°F**  
comfort rating  
**-34°C**

**GLOVES**



a.

### a. **NEW** Heated Glove with Rechargeable Battery

Kick up the heat with these lithium battery-powered heated gloves. Built for maximum comfort and performance with Performance-Flex on knuckles for better flexibility.

M, L, XL | 2890 | \$237



### b. **NEW** Extreme Ultra Grip Glove

What happens when an ultra-grip, cut resistant palm and touchscreen capabilities meet Performance-Flex for better dexterity? One heck of a hardworking glove that's built to last.

M, L, XL | 2795 | \$68



Pre-curved, ergonomic fit



Pre-curved, ergonomic fit

### c. **Extreme Freezer Glove**

Offering extreme protection and durability, these gloves have impact protection for safety and Thinsulate® for warmth.

M, L, XL, 2XL | 0679 | \$59

Available with Touch or Key-Rite Nib.  
See pg. 64 for details.



### d. **Extreme Freezer Mitt**

With the added warmth of a mitt design, these gloves still offer impact protection, Thinsulate® and durable construction so you get extreme comfort and warmth.

M, L, XL | 0617 | \$59



### e. **PolarForce® Glove**

You have maximum warmth and control with these gloves featuring Performance-Flex for flexibility and even touchscreen capabilities on the thumb and forefinger.

M, L, XL | 0518 | \$44



Pre-curved, ergonomic fit

### f. **PolarForce® Mitt**

High performance in a mitt? Oh yeah. With Performance-Flex, touchscreen capability on the thumb and Grip Assist on the palms, you're ready to work.

S, M, L, XL | 2830 | \$37



Pre-curved, ergonomic fit

### g. **Iron-Tuff® Insulated Glove**

With 4 times the strength of natural leather, these gloves can take on even the toughest tasks no matter how low the temperature drops.

M, L, XL | 2860 | \$44



### h. **Double Insulated Cowhide Leather**

Durable and warm so you can work in the cold day in and day out without having to constantly change gloves.

L, XL | 0419 | \$27



a.



#### a. NEW 54 Gold Glove

Built from classic designs, but updated with high-performance innovations like Performance-Flex and Kevlar® thread for getting it done, job after job.  
M, L, XL | 2960 | \$81



Pre-curved, ergonomic fit



Pre-curved, ergonomic fit

#### b. ArcticFit™ Max

Knuckle and wrist impact protection for additional safety, plus full silicone grip to prevent slipping and neoprene cuff for snug fit.  
S, M, L, XL | 2790 | \$37



Pre-curved, ergonomic fit

#### c. Ergo Goatskin

Soft, durable goatskin with triple insulation so the cold can't stop you. Impact protection and Ergo Fit to guard against injury.  
L, XL | 0353 | \$43

Available with Key-Rite Nib. See pg. 64 for details.



#### d. Insulated Cowhide Leather

Durable, naturally warm leather paired with a fleece liner for extra comfort and warmth. Perfect work gloves for tough jobs, especially when it's cold.  
M, L, XL | 0319 | \$25

Available with Key-Rite Nib. See pg. 64 for details.



#### e. Frostline® Glove

Get full protection in a super durable glove. Insulation extends through the cuff for added warmth and the waterproof outer keeps your hands dry.

M, L, XL | 0291 | \$44



#### Dipped Leather Mitt

More grip. Water-repellent protection. Added warmth of mitt design. Upgrade to the benefits of a dipped mitt.

S, M, L, XL | D317 | \$33





-20°F  
comfort rating  
-29°C

GLOVES

PFC Beef Broccoli  
4 / 22 oz  
Net Wt. 5.50 lbs  
5006 008520 1200:15  
BEST BY  
MAR 20 2021



KEEP FROZEN

### a. NEW Freezer Edge® Glove

Use your touchscreen devices and stay warm at the same time in these bad boys with tough, durable palm and finger pads that prevent injury while you work. Productivity: 1, Cold: 0.  
M, L, XL | 2800 | \$38



### b. Insulated Softshell Glove

Dexterity. Grip. Warmth. Durability. Comfort. We combined them to give you superior performance in a great looking style.  
M, L, XL | 2631 | \$37



### c. Women's Softshell Insulated Glove

You don't work as well if your gear doesn't fit. Get the fit designed just for you, plus enhanced grip on the palm, dexterity and warmth to up your performance.  
S, M, L | 2630 | \$37



### d. Insulated High Dexterity

Form-fitting with grip pads on fingers and palm, these gloves let you focus on the details without the frustration.  
M, L, XL, 2XL | 0282 | \$25  
Available with Touch or Key-Rite Nib.  
See pg. 64 for details.



### e. Insulated Impact Pro

Stay safe with impact protection, stay warm with Thinsulate®, and get the job done with silicone dot grip on palms.  
Black, Orange | M, L, XL | 0579 | \$41



### f. Waterproof High Dexterity

Moisture-wicking lining keeps sweat from causing discomfort, while the waterproof barrier keeps moisture from seeping in and making you cold.  
S, M, L, XL, 2XL | 0283 | \$33



### g. Cowhide Freezer

Split cowhide and a heavy-duty knit wrist spell "bad news" for any cold-weather job that's looking to ruin your gloves. Warm tricot lining adds comfort.  
S, M, L, XL | 0250 | \$25



### h. Latex Coated Cowhide Freezer

Latex coating adds a water-repellent barrier plus gives added grip so you don't have to worry about tools or boxes slipping out of your hands.  
M, L, XL | 0251 | \$34



### i. Insulated Goatskin

Durable protection is extended to the wrist with an added safety cuff. Warm, soft, comfortable and durable goatskin with a fleece liner.  
L, XL | 0253 | \$30



a.

a.



#### a. Insulated HiVis Super Grip

Form-fitting but insulated, so you get control and warmth. Get super grip with the patterned silicone on palms and fingers.



Black, Lime | S, M, L, XL | 0379 | \$31

Available with Key-Rite Nib. See pg. 64 for details.



#### b. Insulated Goatskin Leather

Breathable and extremely abrasion resistant, goatskin is the perfect leather for the roughest jobs. S, M, L, XL | 0313 | \$22



#### c. Chillbreaker™ Glove

Durable, flexible and warm, the Chillbreaker™ glove keeps you protected while you handle whatever the day demands. L, XL | 0318 | \$19



#### d. Nylon & Goatskin

Nylon and goatskin combine for a flexible, comfortable glove that offers lasting protection in subzero temps. L, XL | 0243 | \$24



Pre-curved, ergonomic fit







## GLOVES



a.



### a. Ultra Dex

The super durable Ultra Dex gloves can take a beating every day, while staying flexible so you can handle every detail of the job.

S, M, L, XL | 2330 | \$23



### b. Cowhide & Canvas

Durable canvas and cowhide construction means these gloves never need a day off. Gauntlet cuff extends protection.

L, XL | 0314 | \$12



### c. HiVis Super Grip

Keep your hold on boxes, tools and everything else with dot silicone grip. Neoprene, spandex and mesh back keep the gloves flexible.

M, L, XL | 0279 | \$22

Available with Key-Rite Nib. See pg. 64 for details.



### d. Grip Gladiator

Maximum gripping power with a full-palm silicone coating makes these the perfect gloves for cold jobs where precision and grip matters.

M, L, XL, 2XL | 2430 | \$27

Super Grip Coating on Palm and Fingers



## MITTS



a.



**-25°F**  
comfort rating  
**-32°C**

### a. Dipped Cowhide Mitt

More grip. Water-repellent protection. Added warmth of mitt design. Upgrade to all of these benefits of a dipped mitt.  
S, M, L, XL | D317 | \$33



**-30°F**  
comfort rating  
**-34°C**

### b. Extreme Freezer Mitt

With the added warmth of a mitt design, these gloves still offer impact protection, Thinsulate® and durable construction so you get extreme comfort and warmth.  
M, L, XL | 0617 | \$59



**-30°F**  
comfort rating  
**-34°C**

### c. PolarForce® Mitt

High performance in a mitt? Oh yeah. With Performance-Flex, touchscreen capability on the thumb, and Grip Assist on the palms, you're ready to work.  
S, M, L, XL | 2830 | \$37



**-25°F**  
comfort rating  
**-32°C**

### d. Insulated Leather Mitt

Durable leather gets an added shield against abrasion with reinforced palms and thumb. Mitt design provides more warmth.  
S, M, L, XL | 0317 | \$23



**-10°F**  
comfort rating  
**-23°C**

### e. Softshell Convertible Mitt

Warmth + versatility + durability: everything you need to get to work. Convert from mitt to open-finger glove for more dexterity.  
L, XL, 2XL | 0504 | \$24



**0°F**  
comfort rating  
**-18°C**

### f. Pocketed Convertible Mitt

There's no getting away from the warmth of these gloves. Converts from mitt to full-fingered glove, plus has a pocket for HotHands® hand warmers.  
L, XL | 0404 | \$28



**0°F**  
comfort rating  
**-18°C**

### g. 3-Finger Leather Mitt

Get the warmth of a mitt with a little more control thanks to the unique design of these mitts. Durable and warm.  
L, XL | 0216 | \$16



**a. Insulated Wool Leather Palm**

Natural wicking and warmth of Ragg wool with the durability and abrasion-resistance of leather.  
L, XL | 0521 | \$15

**b. Insulated Wool Grip**

Wool is great for warmth but not for grip. Herringbone style silicone grip performs better in cold – without cracking or getting slick.  
M, L, XL | 0421 | \$13

**c. Insulated Wool**

These gloves offer triple warmth with wool outershell, Thinsulate® and a comfortable fleece lining. Extended cuff for more warmth.  
L, XL | 0321 | \$10

**d. Premium Wool Convertible Mitt**

Maximum warmth even in the coldest conditions. Natural warmth of Ragg wool, plus leather palm to give you better grip.  
L, XL | 0304 | \$17

**e. Wool Liner**

Pre-launched for softness, these wool liners are great for added warmth under other gloves or alone for better dexterity.  
S/M, L/XL | 0221 | \$4

**f. Stretch Wool Liner**

Premium Merino wool blended with spandex for warmth that stretches to fit. Comfortable alone and as a liner under other gloves.  
L | 0231 | Dozen \$53

**g. Ragg Wool Dot Liner**

Combines the warmth of wool with a popular dot-grip design that makes it easier to handle tools or other items.  
M, L, XL | 0222 | \$5



WARNING: This product may contain chemicals known to the State of California to cause cancer, birth defects, or other reproductive harm.



## A GLOVE WITHIN A GLOVE

Get extra protection and better dexterity with dual-layer gloves. Gloves with our unique dual-layer system feature a built-in lining, providing extra warmth and comfort.

Visit [refrigiwear.com](https://refrigiwear.com) to see all dual-layer styles: 0507, 0408, 0509, 0410, 0237, & 2030



a.

Pre-curved, ergonomic fit



b.

Pre-curved, ergonomic fit



a. **Dual-Layer Thermal Ergo** | The double-nitrile sandy finish coating provides extreme grip capabilities. | M, L, XL | 0507 | \$10 ⚠️

b. **Dual-Layer HiVis Ergo** | Tear-resistant glove with a double-nitrile sandy finish coating means you can handle tough jobs every single day. | M, L, XL | 0408 | \$10 ⚠️

## PALM COATED GLOVES

Comfort of knit with added grip and protection. See more at [refrigiwear.com/coated](https://refrigiwear.com/coated)



c.

Pre-curved, ergonomic fit



d.

Pre-curved, ergonomic fit



e.

Pre-curved, ergonomic fit



f.

Pre-curved, ergonomic fit



c. **HiVis Ergo** | Lightweight, tear-resistant string-knit glove with a crinkle-finish latex coating for lasting durability and added grip. | M, L, XL | 0208 | Dozen \$47

d. **Full Dip Ergo** | The crinkle latex finish over the string-knit extends to the upper wrist for more waterproof protection and grip assistance. | M, L, XL | 2100 | Dozen \$39

e. **Thermal Ergo** | Ergo fit reduces fatigue while the crinkle-finish latex coating guards against moisture and prevents slipping. | M, L, XL | 0307 | \$7

f. **ProWeight Thermal Ergo** | ProWeight, tear-resistant terry glove with a crinkle-finish latex coating. More warmth without sacrificing grip. | M, L, XL | 0407 | \$8







#### a. HiVis Thermal Ergo Cut Resistant

You've got deadlines or a boss that needs you to deliver. Protect your hands from the cold and the job with these cut resistant gloves that are great for handling boxes and packaging all day.

M, L, XL | 2237 | \$10



Pre-curved, ergonomic fit



#### b. ShrinkMax

Don't get frustrated with gloves that get torn to shreds. Perfect for abrasive, repetitive jobs like manual shrink-wrapping.

M, L, XL | 2260 | \$13



#### c. Cut Resistant Permaknit Glove

Ideal for food processing work, these gloves have been accepted for food contact application by the FDA.

S, M, L, XL | 1207 | Dozen \$67



WARNING: This product may contain chemicals known to the State of California to cause cancer, birth defects, or other reproductive harm.



Midweight Dot Grip

Get the most out of your knit gloves - PVC dot grip covers the entire glove so you can reverse them for extended wear.

Natural, Lime, Orange  
M, L, XL | 0310 | Dozen \$31



Brushed Acrylic Double Dot

These gloves will last to the end of the job thanks to the double-sided dot pattern that gives you extra gripping power.

Black/Lime | S, M, L, XL | 2010 | Dozen \$47



Herringbone Grip

Warmth and breathability of knit with the grip assistance of a PVC coating in a herringbone design.

M, L, XL | 0409 | Dozen \$43



Dual-Layer Herringbone Grip

Warm and functional dual-layer design for added warmth. The herringbone silicone grip performs better in cold—without cracking or getting slick.

M, L, XL | 0509 | Dozen \$76



a.



b.



c.

- a. **Poly Honeycomb Grip** | Gloves that last as long as you do, thanks to the full coverage honeycomb design that lets you reverse for extended wear. | M, L, XL | 0212 | Dozen \$21 ⚠️
- b. **Acrylic Honeycomb Grip** | Breathable, warm and long-lasting thanks to the all-over honeycomb grip that allows you to use both sides of the glove. | S, M, L, XL | 0312 | Dozen \$26 ⚠️
- c. **Glacier Grip™** | Heavyweight glove for more warmth and protection, plus an all-over zig-zag design that makes these gloves last to the end of the to-do list. | M, L, XL | 0412 | Dozen \$44 ⚠️



## A BARRIER AGAINST COLD

Liners are like layers – they can be used in many ways. Worn alone for mild temps or to protect the skin against abrasion. As an added boost of warmth and padding under other gloves. Paired with fingerless gloves to make them last longer. Pick a size that will provide a snug fit, but not too tight, for maximum dexterity and warmth.

GLOVES | LINERS - SOLD BY THE DOZEN



a.



b.



c.



d.

- a. **Wool Liner** | Pre-laundered for softness, these wool liners are great for added warmth under gloves or alone for better dexterity. | S/M, L/XL | 0221 | Dozen \$38
- b. **Stretch Wool Liner** | Premium Merino wool blended with spandex for warmth that stretches to fit. Comfortable alone and under other gloves. | L | 0231 | Dozen \$52
- c. **Lightweight String Liner** | These lightweight, poly/cotton liners add a layer of comfort and warmth to your favorite RefrigiWear® gloves. | XS, S, L | 0211 | Dozen \$9
- d. **Polypropylene Liner** | This moisture-wicking liner stretches easily to fit any hand size without damaging the fibers. Superior comfort and fit. | M, L | 0223 | Dozen \$38

### e. Touchscreen Glove

Touchscreen thread on all 5 fingers. PVC dots on the palm so you can keep your grip on metal and glass devices.

S/M, L/XL | 0227 | \$6



e.

### f. Dual-Layer Thermal Touchscreen Glove

Double the warmth with dual-layer design. Touchscreen thread on all 5 fingers makes it perfect for using touchscreen without exposing your hands to the cold.

S/M, L/XL | 0237 | \$9



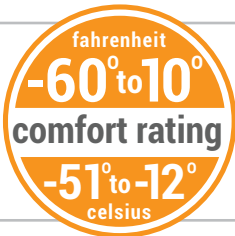
f.



# FOOTWEAR FEATURES

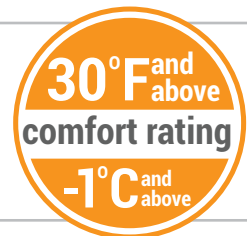
Most work boots are not made for long days in cold, harsh conditions. They can't keep you warm, they're uncomfortable or they crack from the cold temps.

At RefrigiWear®, we design all of our footwear for maximum **comfort, durability, safety** and especially **warmth** when you really need it. So you can kick the cold to the curb in total comfort and get back to work.



## COMFORT RANGES

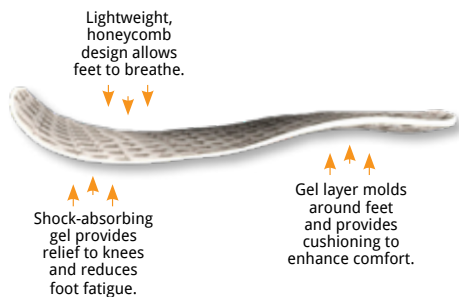
RefrigiWear® developed our temperature Comfort Ranges to help guide you to the right level of insulation for your activity level and environment.



## VITACOMFORT® SYSTEM

VitaComfort® provides needed relief from foot fatigue, pain and injury so you can stay on your feet all day and get the job done.

VitaComfort® takes care of your feet so you can concentrate on what's most important—your work and safety.



- 1 OUTSOLE**
  - Slip resistant and durable
  - Athletic and streamlined
- 2 MIDSOLE**
  - Lightweight and superior support
  - Shock absorbing
- 3 COMFORT GEL LAYER**
  - Max comfort and breathable
  - Moisture wicking for dryer feet
- 4 PREMIUM INSOLE**
  - Added cushioning arch support
  - Stability and pulls moisture away
- 5 360 DEGREE PADDING**
  - Extra comfort



**BOA®**  
BOA® Fit  
System

# BOA®

The BOA® Fit System gives you a fast, effortless, snug fit all day, all at the turn of a dial. It's perfect for cold environments because you don't have to remove your gloves to make adjustments. Once you've dialed it in for your preferred tightness, it won't come loose.

**THE BOA®  
GUARANTEE**

**FIT FOR LIFE WITH BOA®.**  
The BOA® Fit System dials and laces are guaranteed for the lifetime of the product on which they are integrated.

[www.boafit.com/support](http://www.boafit.com/support)



## HOW IT WORKS

Ideal for cold environments because you don't have to remove your gloves if you need to make adjustments.  
Get the perfect fit at the turn of a dial.



**PUSH TO ENGAGE**



**TURN TO TIGHTEN**



**PULL OUT FOR QUICK RELEASE**



**comfort rating**  
Fahrenheit  
-60° to 10°  
Celsius  
-51° to -12°



Max Comfort



Lightweight



Ultra Slip Resistant



Waterproof



BOA  
BOA Fit System



**comfort rating**  
Fahrenheit  
-40° to 10°  
Celsius  
-40° to -12°



Max Comfort



Waterproof



BOA  
BOA Fit System

**a. Extreme Pac Boot** | Fight foot fatigue and the cold while staying safe with the Extreme Pac Boot. | Full 7-14 | [VitaComfort®](#) | 1700 | \$236

**b. Extreme Hiker** | Bring on tough days in harsh conditions with these boots built for extremes. | Full 7-14, Half 8½-11½ | [VitaComfort®](#) | 1250 | \$196

## FOOTWEAR



a.



a.



b.



a. **Extreme Freezer Pull-On** | Protection down to -50°F paired with extreme comfort make these the ultimate work boots. Easy to kick off after a long day on the job.

Full 7-14 | [VitaComfort®](#) | 192 | \$207

b. **Extreme Freezer** | Freezer boots that handle temps down to -45°F, with puncture resistant plate and anti-slip soles to keep you protected, safe and focused on work.

Full 7-14, Half 8½-11½ | [VitaComfort®](#) | 190 | \$196



a.



b.



NEW



c.



d.



e.



f.



NEW



- a. **Pedigree™** | A slim-profile pac boot with removable liner, seam-sealed waterproof protection and supporting steel shank. | Full 7-14 | [VitoComfort®](#) | 113SR | \$156
- b. **NEW Iron-Tuff® Hiker** | Get a heavy-duty work boot that's tougher than a \$2 steak but as comfortable as your favorite recliner on a Sunday afternoon watching football.  
Full 7-14, Half 8½-11½ | [VitoComfort®](#) | 1285 | \$179
- c. **PolarForce® Max** | Finally, work boots that don't skimp on comfort! Waterproof and armed to protect against the cold with Thinsulate® and a DRI-BLAZE® lining.  
Full 7-14, Half 8½-11½ | [VitoComfort®](#) | 1140 | \$184
- d. **Platinum** | Don't let foot fatigue, discomfort or injury keep you from getting the job done with these full grain leather boots.  
Full 7-16, Half 8½-11½ | [VitoComfort®](#) | 123 | \$180
- e. **PolarForce® Hiker** | Get protection against the cold and against injury with this waterproof hiker-style boot featuring ultra-slip-resistant soles for maximum protection.  
Full 5-13, Half 5½-11½ | [VitoComfort®](#) | 1240 | \$173
- f. **NEW Ice Viking** | It takes a warrior to slay the cold – get the right armor. Stay safe and comfortable battling the temps with enhanced visibility accents and premium leather that locks in warmth. | Full 7-14, Half 8½-11½ | [VitoComfort®](#) | 1230 | \$156

## FOOTWEAR

a.



b.



c.



d.



e.



**a. Tungsten Hiker** | Strong like tungsten, this durable crossover with a stylish design features lightweight construction to reduce foot fatigue.

Full 7-15, Half 8½-11½ | [VitaComfort®](#) | 122 | \$167

**b. Classic** | It's called a Classic for a reason. These leather work boots will help you get the job done safely and comfortably.

Full 5-15, Half 8½-11½ | [VitaComfort®](#) | 120 | \$133

**c. Ice Logger™** | Great for construction, DIY projects, dock/receiving employees, and much more. Stay safe, warm and comfortable.

Full 5-15, Half 8½-11½ | [VitaComfort®](#) | 132 | \$144

**d. Barrier** | Keep the cold at bay and get the job done. Self-locking zipper and secure closure for a comfortable fit and easy on/off.

Full 7-14, Half 8½-11½ | [VitaComfort®](#) | 1210 | \$144

**e. Frostline® Hiker** | Get safety and style in one hard working boot. This waterproof hiker will keep your feet safe and warm.

Full 7-14, Half 8½-11½ | [VitaComfort®](#) | 1160CR | \$167



a.



b.



a. **EnduraMax™** | Great for everyday wear, with waterproof protection and a sleek hiker profile.

Full 5-15, Half 5½-11½ | **VitaComfort®** | 129CR | \$144

b. **Crossover Hiker** | Lighter, safer and easier to get on and off. Perfect when temperatures are hovering around freezing or above.

Full 5-13, Half 5½-11½ | **VitaComfort®** | 145 | \$133

c. **Women's Black Widow™** | Full 6-10, Half 6½-9½ | **VitaComfort®** | 136 | \$133

c.



c.

## WOMEN'S BOOTS – FIT FOR DUTY

Ladies, get the right fit so you can focus on the job, not discomfort.

See page 63 for boots in women's sizes.



## SOCKS



### Iron-Tuff® Sock

Naturally warm and moisture-wicking, these socks are also extra durable. Tough days are no match for this level of comfort and protection.

S/M, L/XL | 1040 | \$19



### SOCK SIZING

Size S/M fits shoe sizes 7-10

Size L/XL fits shoe sizes 11-14



### Extreme Sock

Step into your day with extreme confidence. Breathable, durable, thick, warm and moisture-wicking – these socks have it all.

S/M, L/XL | 1030 | \$25



### PolarForce® Sock

Wrap your feet in comfort thanks to advanced construction that allows a cushioned sole paired with a breathable top. High merino wool content controls moisture and provides warmth.

S/M, L/XL | 1020 | \$24



### RefrigiWear® Travel Bag

Fits everything you need to stay warm and then some. With a MOLLE loop system on the outside, several pockets and a large interior, getting your gear to work has never been easier.

0999 | \$94







### Wick Socks

Superior moisture control and odor fighting materials so you can stay comfortable even if your feet sweat. White, Black | S/M, L/XL | 0033 | \$13



### Performance Socks

Stay comfortable and dry with moisture-wicking materials. Ankle and calf support bands add comfort. M, L, XL | 0031 | \$9



### Leather Boot Socks

Heavier weight construction offers more durability, so you don't end up with holes and worn areas. S/M, L/XL | 0032 | \$11



### Brushed Thermal Socks

The brushed inner lining adds a soft feel and more warmth so you can work in comfort. S/M, L/XL | 0039 | \$13



### Super Socks

Knee high socks shaped to naturally hug your legs for the best fit and ultimate comfort. L/XL | 0036 | \$15



### NEW ErgoShield™ Arch Support Insoles

Firm and flexible arch support provides cushioning and stability for all-day comfort when the job keeps you on your toes. 7-14 | 0810 | \$55



### NEW ErgoShield™ Anti-Fatigue Insoles

Say goodbye to tired feet. Shock-absorbing gel under arch and heel eliminates impacts of heel strikes so you can stay on your feet till the job's done. 0805R 7-14½ | 0805 | \$50



## KEEP YOUR HEAD IN THE GAME

Don't leave yourself exposed to drafts and heat loss. Headwear helps protect vulnerable areas such as ears, nose and mouth from frostbite. RefrigiWear® offers a wide range of headwear, from caps to full masks, so you can choose the right protection and stay warm.



### a. Extreme Dual-Layer Clava

Your face, head and neck deserve the best protection. With dual-layer Polartec® fleece, you get extreme warmth and full protection.

Black | S/M, L/XL | 6480 | \$37



### b. PolarForce® Balaclava

Wear as a full mask, gaiter or open face, for maximum flexibility as you go throughout your daily activities. Made from Polartec® fleece for great comfort and warmth.

Black | S/M, L/XL | 6440 | \$29



### c. NEW Extreme Hooded Balaclava

Get flexible protection in this 3-in-1 balaclava. Wear as a gaiter when it's chilly. Add the cap for more warmth. Wear as full balaclava for the ultimate defense from the cold.

Black | S/M, L/XL | 6750 | \$41



d.



### d. NEW RefrigiWear® Face Covering

Complete your protection with a RefrigiWear® Face Covering. Machine washable and follows current non-medical face mask guidelines.

Navy | One Size Fits All | 0019 | Pack of 2 \$13

### Flex-Wear Open-Hole Mask

Fits great under hats, has an extended neck to provide protection against drafts and a brushed inner lining to provide added comfort.

Black, Navy, Lime | One Size Fits All | 6047 | \$13

**FLEX-WEAR** Extremely comfortable, lightweight and flexible



### Arctic Clava

Breathing holes on the mouthpiece and moisture-wicking Polartec® fleece make this a perfect choice for those that work up a sweat out in the cold.

Black | S/M, L/XL | 0092 | \$31

### Performance Balaclava

Wear as a full mask, open-hole mask or gaiter. Mouthpiece has holes for breathing. Moisture-wicking lining fights sweat.

Black | M/L, XL | 0098 | \$33







a.



b.



c.



d.



NEW

e.



f.



g.



h.



i.



a. **Open-Hole Mask** | Double-layer knit provides extra protection. | Navy, Sage, Lime, Orange | One Size | 0047 | \$11

b. **Fleece-Lined Mask** | Fleece lining for added warmth. | Black | One Size | 0055 | \$17

c. **Silver Magic™ Open-Hole Mask** | Antimicrobial and form-fitting for the best performance. | Black | One Size | 0057 | \$18

d. **NEW Thermal Mask** | Snug fit seals out drafts. Add mouthpiece for more protection. | Black | One Size | 6042 | \$15

e. **3-Hole Mask** | Long neck offers added draft protection. | Black | One Size | 0051 | \$13

f. **Balaclava** | Soft fleece face with contoured nose for the most comfortable fit. | Black | One Size | 0048 | \$16

g. **Hard Hat Balaclava** | Seals around hard hats to keep out the cold. | Black | One Size | 0067 | \$12

h. **Silver Magic™ 3-Hole Mask** | Open mouth for easy breathing and antimicrobial to fight odor. | Black | One Size | 0058 | \$17

i. **Stretch Open-Hole Mask** | Laminated wind protection and extended neck fight the cold. | Black | One Size | 0068 | \$13

## HEADWEAR



a.

a.



b.



c.



d.



e.



f.



g.



h.



i.



j.



a. **NEW PolarForce® Insulated Reflective Cap** | Protect your noggin with Thinsulate® insulation for warmth. Reflective accents for safety in low visibility. | Black | One Size | 6340 | \$27

b. **Frostline® Cap** | We paired the safety of reflective yarn with the warmth of a Polartec® fleece lining to give you the ultimate knit cap. | Black/Gray | One Size | 6320 | \$17

c. **RefrigiWear® Watch Cap** | Orange RefrigiWear logo on a wide-band cap that offers vital head and ear protection. | Black | One Size | 0045PRO | \$10

d. **Watch Cap with Logo** | Moisture-wicking acrylic knit for lasting comfort. Gold Reggie Dog logo. | Black | One Size | 0045RG | \$10

e. **Wool Blend Watch Cap** | Wool and acrylic blend for added comfort and warmth. | Black | One Size | 0045BLK | \$12

f. **Skinny Cap** | Slim profile with no band so it fits under hard hats or your favorite cap. | Black | One Size | 0045SKL | \$9

g. **ChillBreaker™ Plus Cap** | Comfortable fit with reflective stripe woven directly into the fabric for added safety and durability. | Blue/Black | One Size | 6060 | \$15

h. **Fat Cap** | Soft and thick for superior warmth. | Black, Lime, Orange | One Size | 0063 | \$15

i. **Flex-Wear Unisex Skull Cap** | Snug, stretchy fit with a brushed lining for extra warmth. | Black, Navy, Lime | One Size | FLEX-WEAR | 0044 | \$12

j. **Watch Cap** | Soft, solid color acrylic knit cap for maximum comfort. | Navy, Royal Blue, Charcoal, Lime, Orange | One Size | 0045 | \$10





**a. Fleece Headband** | Double thick Polartec® fleece with an enlarged area to cover ears for lasting cold protection. | Black | One Size | 0053 | \$6

**b. Knit Headband** | Great protection against the cold for your ears, which are extra vulnerable to low temperatures. | Navy | One Size | 0052 | \$9

**c. Flex-Wear Headband** | Fits over or under hard hats for more protection. Wide band for extra coverage. | Black, Navy, Lime | One Size | [FLEX-WEAR](#) | 6052 | \$8

**d. Knit Neck Gaiter** | Double-layer acrylic knit protects the nose, mouth, ears and neck from the cold. | Black | One Size | 0050 | \$9

**e. Flex-Wear Neck Gaiter** | Coverage from ears to neck. Stretch fabric means easy on-off and less bulk. | Black, Navy, Lime | One Size | [FLEX-WEAR](#) | 6050 | \$11

**f. Silver Magic™ Gaiter** | Form-fitting and antimicrobial for better performance. | Black | One Size | 0059 | \$17

**g. Merino Wool Neck Gaiter** | Made of premium, soft-not-scratchy Merino wool. Provides warmth and comfort from ears to shoulders. | Black | One Size | 0049 | \$15

**h. Fleece Neck Gaiter** | Adjustable neck cord offers custom fit for more comfort. | Black | One Size | 0064 | \$17

RefrigiWear®

**SAVE** **15% OFF**  
YOUR ENTIRE ORDER

Go to **refrigiwear.com/promo2021** and sign up for emails to receive special offers, VIP benefits and a code for **15% off** your first order.

**refrigiwear.com/promo2021**

#### FRIENDLY BILINGUAL CUSTOMER SERVICE

Real, live customer service from Dahlonge, Georgia. Call toll free, 800.645.3744 or email [keepmewarm@refrigiwear.com](mailto:keepmewarm@refrigiwear.com). Live customer support (all Eastern time):

**Monday – Friday | 7:00a.m. to 6:00p.m.**

\*Nosotros hablamos español.

---

#### GUARANTEE

Your total satisfaction with your RefrigiWear® purchase is important to us. If for any reason you are not pleased with your selection, contact our Customer Service Team at 800.645.3744.

---

#### INTERNATIONAL CUSTOMERS

Visit [refrigiwear.com/international](http://refrigiwear.com/international) or call 706.864.5757 to be connected with an authorized Sales Representative or Distributor in your country. A Spanish version of a catalog is available via PDF at [www.refrigiwear.com/Spanish](http://www.refrigiwear.com/Spanish), or by mail by request only.

La versión en Español de este catálogo está disponible en archivo PDF en [www.refrigiwear.com/Spanish](http://www.refrigiwear.com/Spanish), o por correo regular por medio de pedido solamente.

54 Breakstone Drive  
Dahlonge, GA 30533  
[keepmewarm@refrigiwear.com](mailto:keepmewarm@refrigiwear.com)  
Phone: 800.645.3744  
Fax: 800.377.0520 · 706.864.5898

©2020 RefrigiWear®, Inc. The REFRIGIWEAR® name and logos and all related product and service names, design marks and slogans are the trademarks or service marks of RefrigiWear®. All other marks are the property of their respective owners.

