

Ring Power®



Ring Power®
AIR COMPRESSOR GROUP



SPECIAL USED LISTINGS

April 2024

Offerings:
Diesel Air Compressors
Industrial Electric Air Compressors
Air Dryer Packages
Air Tools
New Aged Inventory

DIESEL AIR COMPRESSORS

1800 CFM / 100 & 150 PSI iT4 "AF"

ATLAS COPCO XAS1800 DUAL FUNCTION DIESEL DRIVEN ROTARY SCREW AIR COMPRESSOR. CAT C-15 IT4 ENGINE, 1600 CFM @ 150 PSI OR 1800 CFM @ 100 PSI AFTERCOOLER, WATER SEPARATOR, PD & DD FILTRATION, ELECTRIC BLOCK HEATER, COLD WEATHER PACKAGE, FUEL XPERT, ELECTRIC BRAKES, TANDEM AXLE, PINTLE HITCH
 2014 YEAR 3,087 HOURS S/N: HOP090654 \$190,000

1800 CFM / 100-200 PSI T4F "AF"

ATLAS COPCO XAS 1800 1400-1800 CFM @ 100-200PSI DIESEL PORTABLE AIR COMPRESSOR W/CAT C13 (T4F) DIESEL ENGINE, 223 GALLON FUEL TANK (18.5 DEF FLUID), XC4004 CONTROLLER, PFF SYSTEM (AFTER COOLER & FILTERS), CONDENSATE FLASH SYSTEM, REMOTE FUEL CONNECTIONS, TANDEM AXLE TRAILER W/ PINTLE HOOK, FORKLIFT POCKETS.
 2020 YEAR 157 HOURS S/N: HOP091582 \$250,000



1550 CFM / 365-508 PSI HIGH PRESSURE & AFTERCOOLED

ATLAS COPCO XRVS 1550 T4F HIGH PRESSURE DIESEL PORTABLE AIR COMPRESSOR. RATED FOR 1550 CFM @ 365 PSI, 1350 CFM @ 508 PSI WITH CAT C18 T4F ENGINE AFTERCOOLED, MOISTURE SEPARATOR 7" XC4004 CONTROLLER, COLD WEATHER PACKAGE, WITH 240 GALLON FUEL TANK (NO DEF REQUIRED), 2-2" OUTLETS. EXTERNAL FUEL CONNECTIONS. TANDEM AXLE TRAILER WITH ELECTRIC BRAKES.

2021 YEAR	2,583 HOURS	S/N: HOP091717	\$299,500
2020 YEAR	1,308 HOURS	S/N: HOP091474	\$299,500
2020 YEAR	743 HOURS	S/N: HOP091476	\$307,500



1550 CFM / 135 PSI 100% OIL FREE

SULLAIR DE18 RATED 1550 CFM @ 135 PSI, CATERPILLAR DIESEL ENGINE, AIR COOLED AFTERCOOLER, COLD WEATHER PACKAGE, PREMIUM INSTRUMENT PANEL, SAFETY SHUTDOWNS, 245 GALLON FUEL TANK, SKID MOUNTED WITH 115% FLUID CONTAINMENT, SOUND ATTENUATED ENCLOSURE, **NEW COUPLING, NEW EXHAUST ASSEMBLY, COMPLETE PAINT AND EQUIPCOAT FULL UNIT.**
COMPLETE SERVICE, LOAD TESTED, LIMITED WARRANTY.

2011 YEAR	1,704 HOURS	S/N: 107140098	\$120,000
2008 YEAR	7,120 HOURS	S/N: 805090046	\$110,000
2006 YEAR	6,683 HOURS	S/N: 612160032	\$100,000



1020 CFM / 150 PSI IT4 "AF"

ATLAS COPCO XATS1050 CD7 RATED: 1020 CFM @ 150 PSI, AIR COOLED AFTERCOOLER, WATER SEPARATOR, PD & QD FILTRATION TO 0.01 MICRON, CATERPILLAR C-9 **IT4** ENGINE, 142 GALLON FUEL TANK, TANDEM AXLE TRAILER W/ ELECTRIC BREAKS.

2013 YEAR	5,674 HOURS	S/N: APP232479	\$73,000
-----------	-------------	----------------	----------



1000 CFM / 365/508 PSI - Dual Pressure

ATLAS COPCO XRVS1000+AF PORTABLE AIR COMPRESSOR, RATED 1000 CFM @ 365 PSI or 875 CFM @ 508 PSI, CAT C13 **IT4** DIESEL ENGINE, **AFTERCOOLER** WITH WATER SEPARATOR, INSTRUMENT QUALITY AIR, TANDEM AXLE TRAILER, PINTLE HITCH, COLD WEATHER PACKAGE.

2015 YEAR	51,783 HOURS	S/N: HOP090826	\$272,000
2014 YEAR	2,103 HOURS	S/N: HOP090633	\$205,000

900 CFM / 500 PSI -OR- 1150 CFM / 350 PSI - HIGH PRESSURE & AFTERCOOLED

SULLAIR 900XHH/1150XH DTQ RATED 900 CFM @ 500 PSI -or- 1150 CFM @ 350 PSI, DUAL PRESSURE / DUAL CAPACITY COMBO UNIT, CATERPILLAR C-15 DIESEL ENGINE, AFTERCOOLED, PREMIUM INSTRUMENT PANEL, * **COLD WEATHER PACKAGE (ENGINE BLOCK HEATERS/LOUVERS)**, SAFETY SHUTDOWNS, 190 GALLON FUEL TANK, TRIPLE AXLE TRAILER.

2013 YEAR	1,834 HOURS	S/N: 311270043	\$165,000	<i>IT4</i>
2011 YEAR	2,900 HOURS	S/N: 106130087	\$138,000	<i>TIER 3 ENGINE</i>

900 CFM / 150 PSI

SULLAIR 900HAF DTQ RATED 900 CFM @ 150 PSI, INSTRUMENT QUALITY, AIR COOLED AFTER COOLER, WATER SEPARATOR, FILTRATION TO 0.01 MICRON, CATERPILLAR C-9 DIESEL ENGINE, PREMIUM INSTRUMENT PANEL WITH DIGITAL & MECHANICAL GAUGE PACKAGE, SAFETY SHUTDOWNS, HIGH / LOW PRESSURE SWITCH, 120 GALLON FUEL TANK, TANDEM AXLE TRAILER W/ ELECTRIC BRAKES & PINTLE HITCH.

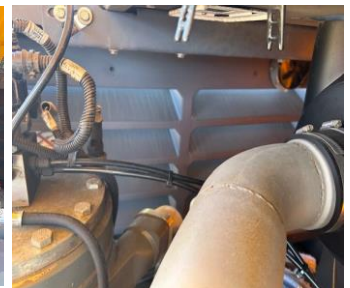
2010 YEAR 6,964 HOURS S/N: 010120085 \$63,000



400 CFM / 150 PSI

ATLAS COPCO XATS400 RATED 398 CFM @ 150 PSI, INSTRUMENT QUALITY, **NON AFTERCOOLED/FILTERED**, WATER SEPARATOR, FILTRATION TO 0.01 MICRON, CATERPILLAR 4.4 T4F DIESEL ENGINE, XC2003 PREMIUM INSTRUMENT PANEL, SAFETY SHUTDOWNS, 52 GALLON FUEL TANK, SINGLE AXLE TRAILER WITH ELECTRIC BRAKES & PINTLE HITCH.

2018 YEAR 1,084 HOURS S/N: HOP077321 \$ 21,500
 2018 YEAR 2,105 HOURS S/N: HOP077480 \$ 21,500



189 CFM / 100 PSI

ATLAS COPCO XAS188 RATED 189 CFM @ 100 PSI, INSTRUMENT QUALITY, AIR COOLED AFTERCOOLER, WATER SEPARATOR, FILTRATION TO 0.01 MICRON, 49HP CATERPILLAR C2.2 DIESEL ENGINE. 27 GALLON FUEL TANK. SINGLE AXLE TRAILER WITH ELECTRIC BRAKES & PINTLE HITCH.

2021 YEAR 40 HOURS S/N: HOP031233 \$17,900
 2021 YEAR 9 HOURS S/N: HOP031238 \$17,900
 2021 YEAR 20 HOURS S/N: HOP031357 \$17,900
 2021 YEAR 15 HOURS S/N: HOP030998 \$17,900
 2019 YEAR 64 HOURS S/N: HOP059430 \$17,900



SULLAIR ELECTRIC INDUSTRIAL RENTAL PACKAGES

250HP-300HP VARIABLE SPEED AIR COMPRESSOR

SULLAIR MODEL TSR32 RATED 250 - 300 HP, 1500 CFM, 125-175 PSI, 480 VOLT, 3 PHASE, 60 HZ, TEFC MOTOR, TOSHIBA VARIABLE SPEED DRIVE, SUPERVISOR II, MICROPROCESSOR, Y-DELTA STARTER, AIR COOLED HERESITE COATED AFTER COOLER, SOUND ATTENUATED ENCLOSURE, HEAVY DUTY SKID WITH FORKLIFT POCKETS.

2014 YEAR	32,460 HOURS	S/N: 406240089	\$185,000
2011 YEAR	43,255 HOURS	S/N: 112210073	\$75,000

100HP-200HP VARIABLE SPEED AIR COMPRESSOR

SULLAIR MODEL TSR20 RATED 100-200 HP, 380-970 CFM, 100-175 PSI, 480 VOLT, 3 PHASE, 60 HZ, TEFC MOTOR, TOSHIBA VARIABLE SPEED DRIVE, SUPERVISOR II, MICROPROCESSOR, Y-DELTA STARTER, AIR COOLED HERESITE COATED AFTER COOLER, SOUND ATTENUATED ENCLOSURE, HEAVY DUTY SKID WITH FORKLIFT POCKETS.

2011 YEAR	33,370 HOURS	S/N: 102170086	\$97,000
2011 YEAR	42,950 HOURS	S/N: 105250004	\$94,000
2008 YEAR	24,195 HOURS	S/N: 812120038	\$92,000



100HP-200HP 100% OIL FREE AIR COMPRESSOR

SULLAIR MODEL DR-13 RATED 100-200 HP, 428-785 CFM, 70-125 PSI, CLASS "0", 480 VOLT, 3 PHASE, 60 HZ, TEFC MOTOR, SUPERVISOR MICROPROCESSOR CONTROLLER, SOLID-STATE STARTER, AIR COOLED HERESITE COATED AFTER COOLER, SOUND ATTENUATED ENCLOSURE, HEAVY DUTY SKID WITH FORKLIFT POCKETS.

2017 YEAR	12,481 HOURS	S/N: 710310063	\$117,000
2017 YEAR	9,378 HOURS	S/N: 711300079	\$112,000
2017 YEAR	18,892 HOURS	S/N: 711300082	\$119,000





SULLAIR INDUSTRIAL PACKAGES

30HP ELECTRIC AIR COMPRESSOR

SULLAIR MODEL 2209 RATED 30HP, 127CFM, 125PSI, 230 VOLT, 3 PHASE, 60 HZ, FULL VOLTAGE STARTER, AIR COOLED AFTERCOOLER, MOISTURE SEPARATOR, CONDENSATE DRAIN, WS CONTROLLER, SKID MOUNTED, ENCLOSURE
 2012 YEAR 20,608 HOURS S/N: 210220031 \$4,000

15HP ELECTRIC AIR COMPRESSOR

SULLAIR MODEL ST1109RD, RATED 15HP, 64CFM, 125PSI, 230 VOLT, 3 PHASE, ENCLOSED, FULL VOLTAGE STARTER, INLET FILTER, 120 GALLON ASME HORIZONTAL RECEIVER TANK, MOUNTED REFRIGERATED DRYER WITH PRE-FILTER
 2016 YEAR 16,843 HOURS S/N: 605100004 \$7,280

10HP ELECTRIC AIR COMPRESSOR

SULLAIR MODEL ST709RD, RATED 10HP, 37.5CFM, 125PSI, 230 VOLT, 3 PHASE, ENCLOSED, FULL VOLTAGE STARTER, INLET FILTER, 80 GALLON ASME HORIZONTAL RECEIVER TANK, MOUNTED REFRIGERATED DRYER WITH PRE-FILTER
2012 YEAR 25,684 HOURS S/N: 210250061 \$3,000
 2014 YEAR 3,513 HOURS S/N: 405130079 \$10,500
 2015 YEAR 32,320 HOURS S/N: 504160024 \$9,500

7.5HP ELECTRIC AIR COMPRESSOR

SULLAIR MODEL ST510RD, RATED 7.5HP, 26.5CFM, 150PSI, 230 VOLT, 3 PHASE, ENCLOSED, FULL VOLTAGE STARTER, INLET FILTER, 80 GALLON ASME HORIZONTAL RECEIVER TANK, MOUNTED REFRIGERATED DRYER WITH PRE-FILTER
 2018 YEAR 8,219 HOURS S/N: 812110043 \$6,500
 2016 YEAR 10,332 HOURS S/N: 605050043 \$5,000

5HP ELECTRIC AIR COMPRESSOR

SULLAIR MODEL ST410RD, RATED 5HP, 16CFM, 150PSI, 230 VOLT, 3 PHASE, ENCLOSED, FULL VOLTAGE STARTER, INLET FILTER, 80 GALLON ASME HORIZONTAL RECEIVER TANK, MOUNTED REFRIGERATED DRYER WITH PRE-FILTER
 2020 YEAR 2,653 HOURS S/N: 009020020 \$8,050
 2019 YEAR 9,999 HOURS S/N: 907160041 \$5,000

AIR DRYER PACKAGES

1600CFM DELIQUESCENT AIR DRYER

VANAIR MODEL FD-1600 BLAST PAK AIR DRYER SYSTEM. RATED: 1600 CFM @ 175 PSI. INCLUDES AFTERCOOLER DELI DRYER AND SEPARATOR.
 2021 YEAR N/A HOURS S/N: 21-10-8426 \$19,900
 2021 YEAR N/A HOURS S/N: 21-10-8425 \$19,900

100CFM REFRIGERATED AIR DRYER

AIRCEL MODEL VF-100, RATED 100CFM, 200 PSI MAXIMUM PRESSURE, 115 VOLT, SINGLE PHASE, 60 HZ, +34 - +39 DEW POINT, PRE AND AFTER FILTRATION (SHIPPED LOOSE), ENCLOSED
 2015 YEAR N/A HOURS S/N: V1CEVC1104 \$2,000

AIR TOOLS — BRAND NEW!



SULLAIR 60LB PAVING BREAKER

MODEL MPB60A, 1 1/4 IN X 6 IN CHUCK.
\$850 ONLY 4 LEFT!

BRAND NEW AGED INVENTORY

SULLAIR DESICCANT HEATER BLOWER PURGE DRYER

2017 YEAR	0 HOURS	S/N: 809012017	\$29,500	MODEL ATDBP1000 (460V)
-----------	---------	----------------	----------	------------------------

SULLAIR OIL-FREE SCROLL COMPRESSOR

2021 YEAR	0 HOURS	S/N: 110110007	\$17,336	MODEL SRL 7.5HP (230V)
-----------	---------	----------------	----------	------------------------

SULLAIR ELECTRIC AIR COMPRESSOR

SULLAIR MODEL ST1808, RATED FOR 25HP, 103 CFM, 115 PSI, 230/460VOLT, 3 PHASE, 60 HZ. FULL VOLTAGE STARTER, AIR COOLED AFTERCOOLER, MOISTURE SEPARATOR, CONDENSATE DRAIN, WS CONTROLLER, SKID MOUNTED, ENCLOSURE UNIT CRATED READY FOR SHIPPING

2022 YEAR	0 HOURS	S/N: 122080305	\$14,462	
-----------	---------	----------------	----------	--



SULLAIR SHOPTEK AIR COMPRESSOR

2022 YEAR	0 HOURS	S/N: 122061004	\$37,620	MODEL ST7509 100HP (460V)
2022 YEAR	0 HOURS	S/N: 122120244	\$37,620	MODEL ST7509 100HP (460V)

GARDNER DENVER HONDA GAS COMPRESSOR 30GAL TANK MOUNTED

2022 YEAR	0 HOURS	S/N: D231377	\$3,050	MODEL HGR-7-3H 13HP
-----------	---------	--------------	---------	---------------------



*******ALL UNITS SUBJECT TO PRIOR SALE AND PRICE CHANGE*******

All units are sold as is. No warranty unless stated in the equipment description.
Hour meter readings are subject to change.

ALL PRICES ARE QUOTED EX-WORKS ST. AUGUSTINE, FL

» Click Here for Used Generator Inventory «

Contact Us Today!

Cat® Dealers: Hunter Hendrix | 904-494-1264
 Outside Florida: Chris Kaczmarczyk | 904-494-1285

Florida Territories Listed Below

