

Release Notes



TRIMBLE ELECTRICAL DESIGNER 2D

This short document summarises the latest improvements, bug fixes and new features that are included in the latest version of the Trimble Electrical Designer 2D Suite of products incorporating ProDesign, Protect, SingleCable and PowerNet.

ProDesign

This release incorporates a number of behind-the-scenes performance, reliability and security Improvements in addition to the following.

For more information on ProDesign, please go to:

<https://mep.trimble.com/en-GB/products/prodesign>.

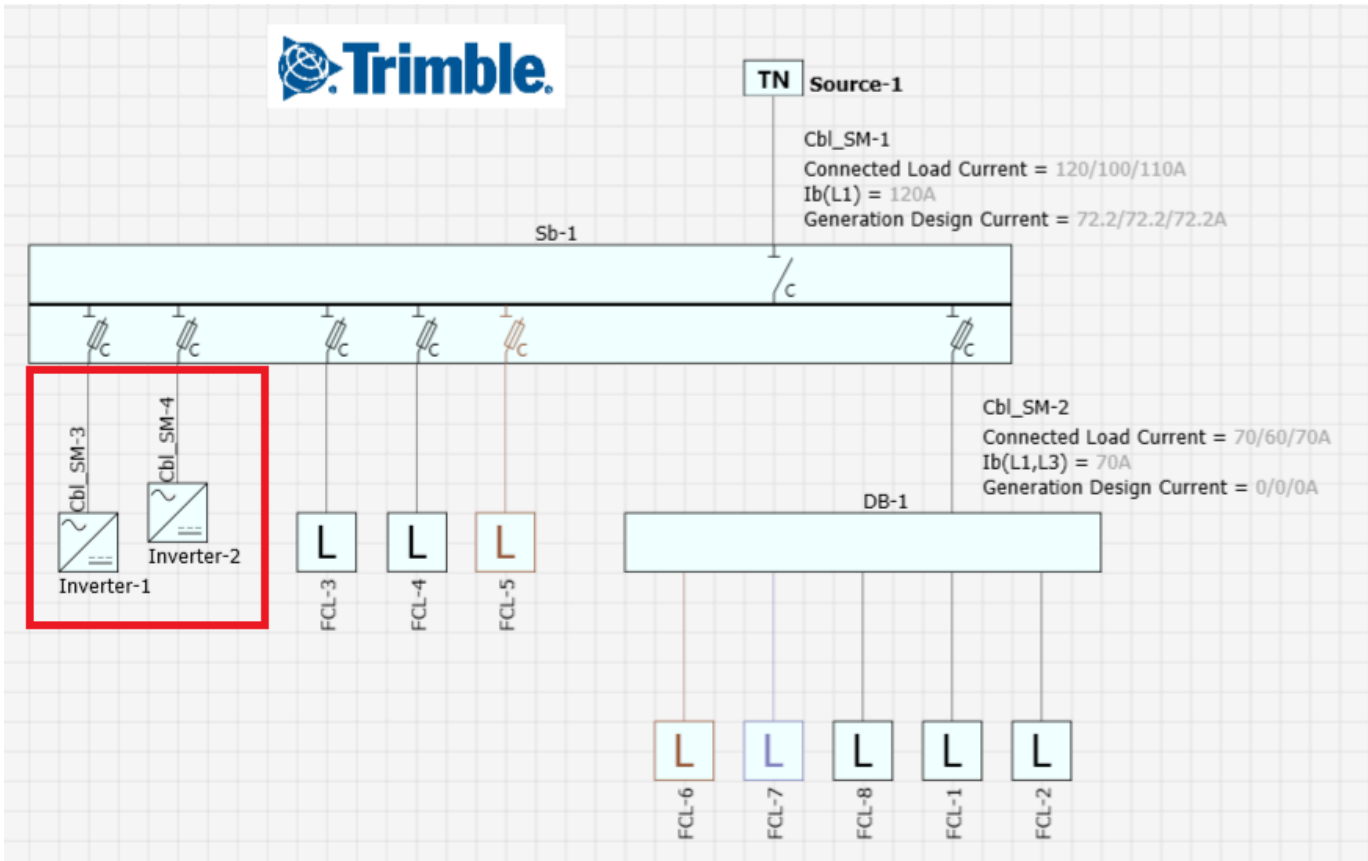
New Inverter Component!

ProDesign introduces the Inverter component. This new feature allows users to add Inverters to their projects for calculations and reports. The accumulated current of Inverters is calculated at the board level to determine the sizing of sub-main cables against current carrying capacity and voltage drop.

Key Features:

- New Inverter component (shown on Schematic)
- New inverter Report
- New Display Parameters for Cables/Boards
- Updated Reports
- Updated Board Diversity page to include Inverter Summary

Example of Inverters shown on the Schematic:



Example of the Inverter settings:

Inverter Settings

ID Inverter-1 **Connections** FROM Cbl_SM-3

Name **Displayed**

Template < No Template > **Apply** **Save As...**

Inverter Details

Voltage

Inverter Parameters

SPD

Display Results

Comments

Attachments

Output Rating 25 kW

Output Rated Current 36.084 A

Circuit Cable Sizing Limit maximum cable size to No Limit

RCD Protection Suitability

- ☐ The inverter provides at least simple separation between the AC side and the DC side.
- ☐ The installation provides at least simple separation between the inverter and the RCD by means of separate windings of a transformer or, the inverter cannot feed DC fault currents into the electrical installation.
- ☐ The inverter does not require a Type B RCD as stated by the manufacturer of the inverter.
- ☐ RCD Selection based on manufacturer's instructions.
- ☐ Built in Protection on AC Side of Inverter.

OK **Cancel**

Improvements

- [MEPEL-9730]: Updated Dutch translation for 'Arc Flash Calculation'.

Protect

This release incorporates a number of behind-the-scenes performance, reliability and security improvements.

For more information on Protect, please go to:

<https://mep.trimble.com/en-GB/products/protect>.

SingleCable

This release incorporates a number of behind-the-scenes performance, reliability and security improvements.

For more information on SingleCable, please go to:

<https://mep.trimble.com/en-GB/products/singlecable>

PowerNet

This release incorporates a number of behind-the-scenes performance, reliability and security improvements.

For more information on PowerNet, please go to:

<https://mep.trimble.com/en-GB/products/powernet>

Upgrade procedure

In order to upgrade your software to this new version, you need a Trimble ID as well as the Named User Licence. For further support, please see the following Technical Assistance section.

Software Update Notifications

The Trimble Electrical Designer suite of applications will notify you when an application update is available for download. You will be able to download the updates from the notification centre itself.

In case your software has received any calculation updates, you will be notified with a "Calculation Service Version Update" during the first instance of calculation.

Named User Licensing

All our products within the Trimble Electrical Designer Suite namely ProDesign, Protect, SingleCable and PowerNet are now powered through named user licensing. This means that a user of our products must have a named user licence assigned to their own Trimble ID and each licence is meant to be used by a single user.

Please contact our support team if you have any questions regarding the licence management and accessing the product. For further support, please see the following Technical Assistance section.

Technical Assistance

Our Technical Support team uses a support tool which allows them to view and control users' machines remotely. This is only ever undertaken with the user's permission – and while being supervised by the user.

Our applications have a menu option link to the [support web page](#) containing details of this assistance should it be required. For more information, please contact our support team via Amtech-Support@Trimble.com or call +44 (0)1908 608833 and then choose Option 1.

UK Customer Portal

If you are a registered customer, please login to the [Trimble community portal](#) for downloading the software and to access other related information. If you are not registered yet, please contact our support team as mentioned in the Technical Assistance section.