

Release Notes

TRIMBLE ELECTRICAL DESIGNER 2D

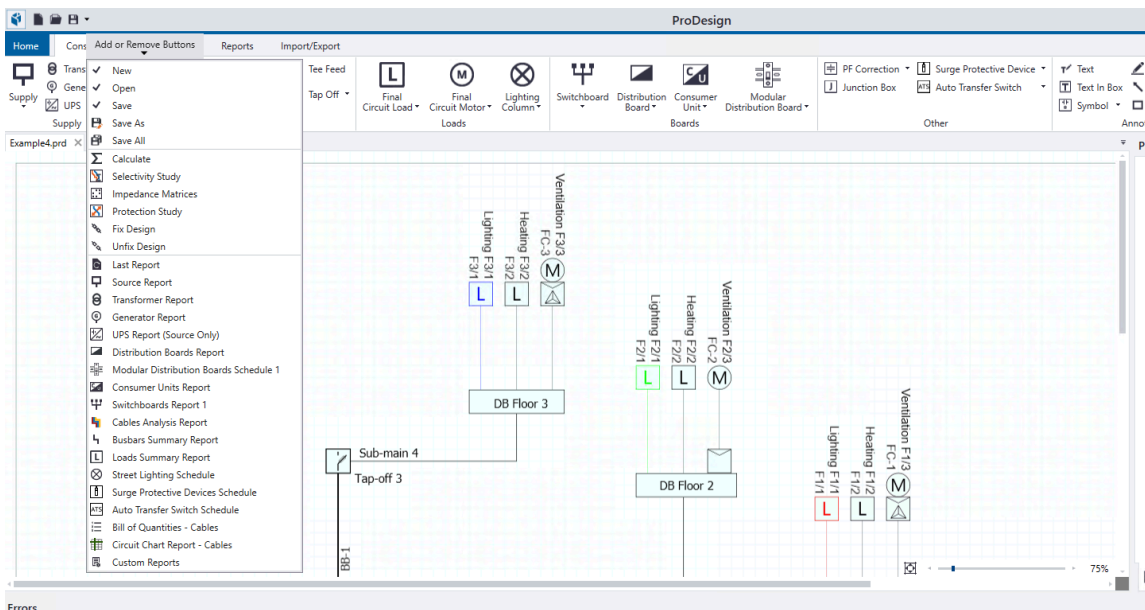
This short document summarises the latest improvements, bug fixes and new features that are included in the latest version of the Trimble Electrical Designer 2D Suite of products incorporating ProDesign, Protect, SingleCable and PowerNet.

ProDesign

This release notes section describes the features and enhancements that are new in version 22.0.4 of the ProDesign. For more information on ProDesign, please go to <https://mep.trimble.com/en-GB/products/prodesign>.

Improvements

- [MEPEL-7016] - Our quick access toolbar has now become a **Dynamic Toolbar**, so users can now customise it by adding or removing the buttons of their choice in the toolbar.



© 2022, Trimble Inc. All rights reserved. Trimble and the Globe & Triangle logo are trademarks of Trimble Inc., registered in the United States and in other countries. All other trademarks are the property of their respective owners. This is the September 2022 Release Notes. It applies to version 2022 of the Trimble Electrical Designer Suite 2D.

Resolved Bugs

- [MEPEL-6687] - Resolved issues related to the usage of specific protective devices on view graph functionality
- [MEPEL-7240] - Resolved calculation issues when Junction Box was included in the UPS connectivity.
- [MEPEL-7495] - Resolved the error report which appeared during the launch of the application

As part of our commitment to the ongoing evolution of ProDesign, we have also included a number of behind-the-scenes performance, reliability and security improvements.

Protect

This latest version 22.0.4 includes the following updates specific to Protect. For more information on Protect, please go to: <https://mep.trimble.com/en-GB/products/protect>.

Improvements

- [MEPEL-7016] - Protect has also got the **Dynamic Toolbar** so users can now customise it by adding or removing the buttons of their choice in the toolbar.

SingleCable

This release notes section describes the features and enhancements that are new in version 22.0.4 of the SingleCable. For more information on SingleCable, please go to: <https://mep.trimble.com/en-GB/products/singlecable>.

Improvements

- [MEPEL-7016] - SingleCable has also got the **Dynamic Toolbar** so users can now customize it by adding or removing the buttons of their choice in the toolbar.

PowerNet

This latest version 22.0.4 does not include any improvements or bug fixes specific to PowerNet. For more information on PowerNet, please go to: <https://mep.trimble.com/en-GB/products/powernet>

Upgrade procedure

In order to upgrade your software to this new version, you need a Trimble ID as well as the Named User Licence. For further support, please see the following Technical Assistance section.

Software Update Notifications

The ProDesign suite of applications will notify you when an application update is available for download. You will be able to download the updates from the notification centre itself.

In case your software has received any calculation updates, you will be notified with a "Calculation Service Version Update" during the first instance of calculation.

Named User Licensing

All our products within the Trimble Electrical Designer Suite namely ProDesign, Protect, SingleCable and PowerNet are now powered through named user licensing. This means that a user of our products must have a named user licence assigned to their own Trimble ID and each licence is meant to be used by a single user.

Please contact our support team if you have any questions regarding the licence management and accessing the product. For further support, please see the following Technical Assistance section.

Technical Assistance

Our Technical Support team uses a support tool which allows them to view and control users' machines remotely. This is only ever undertaken with the user's permission – and while being supervised by the user.

Our applications have a menu option link to the [support web page](#) containing details of this assistance should it be required. For more information, please contact our support team via Amtech-Support@Trimble.com or call +44 (0)1908 608833 and then choose Option 1.

UK Customer Portal

If you are a registered customer, please login to the [Trimble community portal](#) for downloading the software and to access other related information. If you are not registered yet, please contact our support team as mentioned in the Technical Assistance section.