



TERRAZAS DE CORTESÍN  
*Seaviews*



Floor Plans



TERRAZAS DE CORTESÍN  
*Seaviews*



APARTMENTS

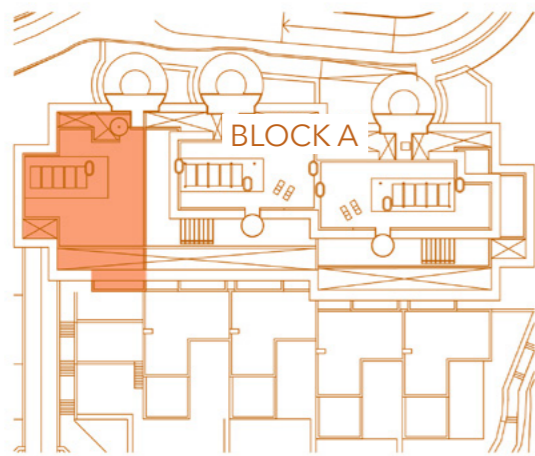




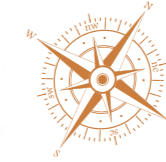
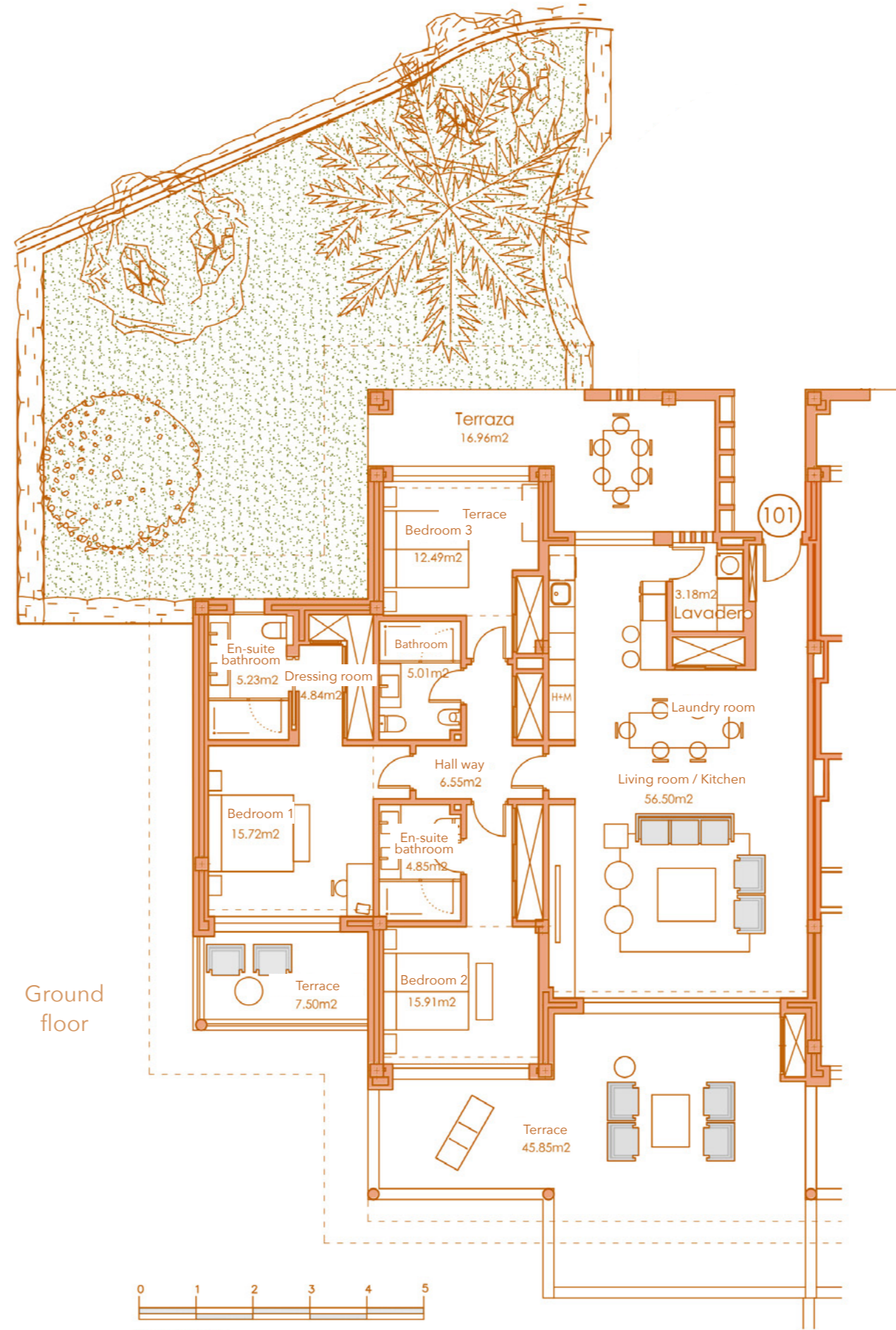
**APARTMENT 101**  
 3 BEDROOMS  
 BLOCK A. STAIRCASE 1 GROUND FLOOR



**TERRAZAS DE CORTESÍN**  
*Seaviews*



Block A



SECTOR UR-10A "FINCA EL CORTESÍN" CASARES, MÁLAGA  
 Information given is subject to modification for technical, construction or legal reasons

SURFACES	
Surface of constructed area	154,52 m <sup>2</sup>
Surface of communal area	6,59 m <sup>2</sup>
Surface of terrace area	78,77 m <sup>2</sup>
<b>TOTAL SURFACE</b>	<b>239,88 m<sup>2</sup></b>
Surface of utilised area	130,31 m <sup>2</sup>
Surface of utilised terrace area	70,31 m <sup>2</sup>
Surface of utilised garden area	152,42 m <sup>2</sup>



BAR SCALE



# PENTHOUSE 111.1

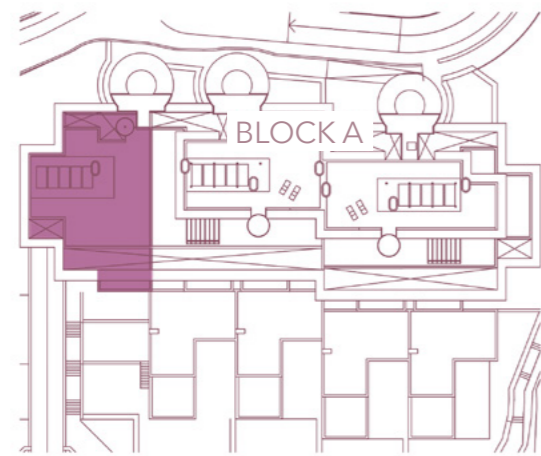
3 BEDROOMS

BLOCK A. STAIRCASE 1 PENTHOUSE FLOOR



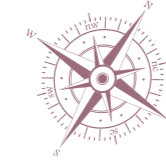
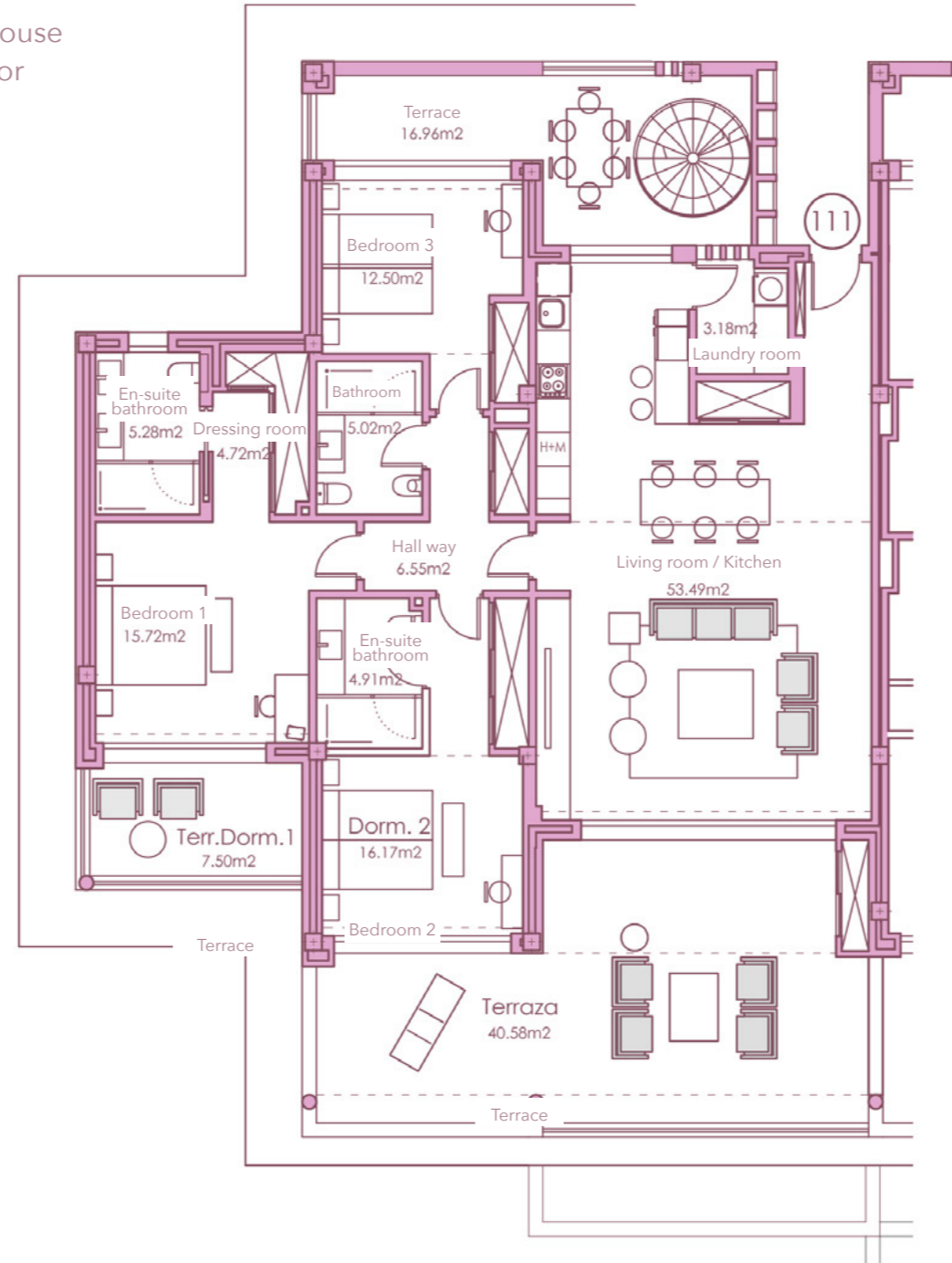
## TERRAZAS DE CORTESÍN

*Seaviews*



Block A

Penthouse floor



SECTOR UR-10A "FINCA EL CORTESÍN" CASARES, MÁLAGA  
Information given is subject to modification for technical, construction or legal reasons

SURFACES	
Surface of constructed area	151,28 m <sup>2</sup>
Surface of communal area	6,47 m <sup>2</sup>
Surface of terrace area	74,24 m <sup>2</sup>
<b>TOTAL SURFACE</b>	<b>227,92 m<sup>2</sup></b>
Surface of utilised area	127,54 m <sup>2</sup>
Surface of utilised terrace area	65,04 m <sup>2</sup>
Surface of utilised solarium area	155,22 m <sup>2</sup>



BAR SCALE



# PENTHOUSE 111.2

3 BEDROOMS

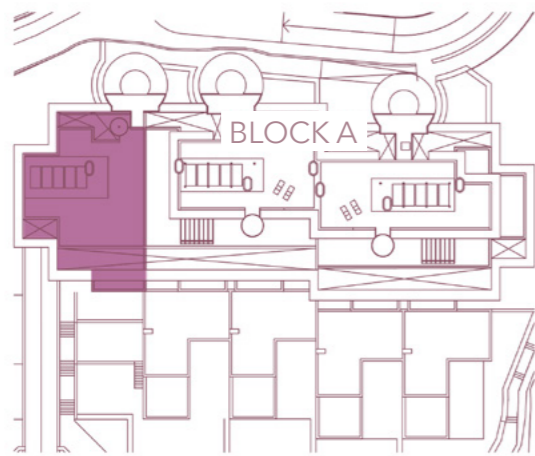
BLOCK A. STAIRCASE 1 PENTHOUSE FLOOR



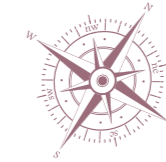
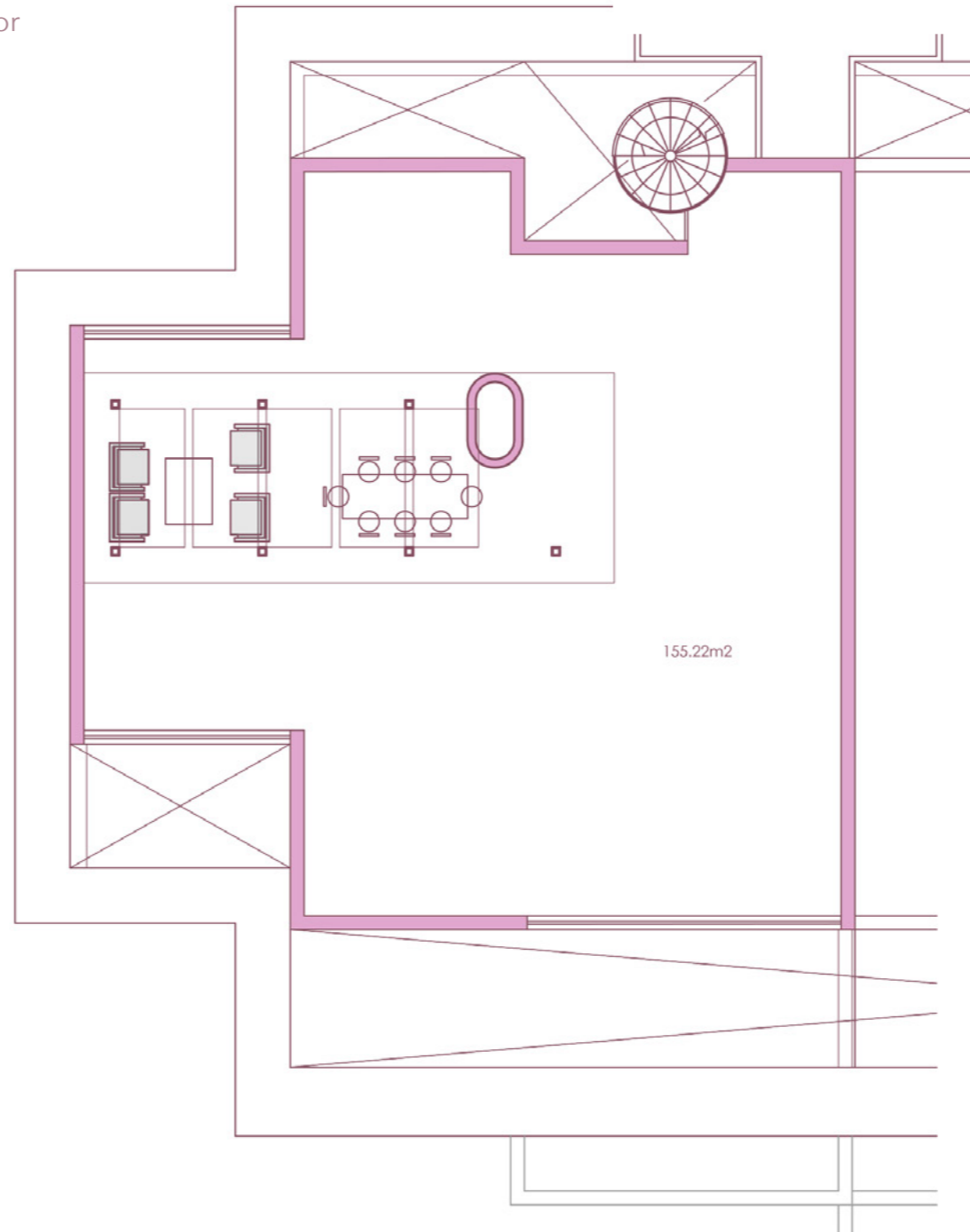
## TERRAZAS DE CORTESÍN

*Seaviews*

Penthouse floor



Block A



SECTOR UR-10A "FINCA EL CORTESÍN" CASARES, MÁLAGA  
Information given is subject to modification for technical, construction or legal reasons

### SURFACES

Surface of constructed area	151,28 m <sup>2</sup>
Surface of communal area	6,47 m <sup>2</sup>
Surface of terrace area	74,24 m <sup>2</sup>

TOTAL SURFACE 227,92 m<sup>2</sup>

Surface of utilised area	127,54 m <sup>2</sup>
Surface of utilised terrace area	65,04 m <sup>2</sup>
Surface of utilised solarium area	155,22 m <sup>2</sup>



BAR SCALE

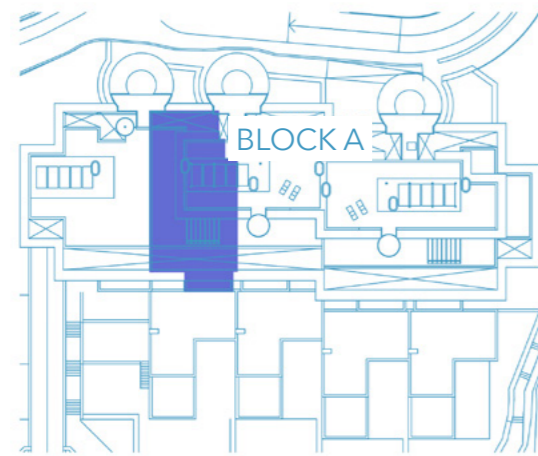


**APARTMENT 211**  
2 BEDROOMS  
BLOCK A. STAIRCASE 2 FIRST FLOOR

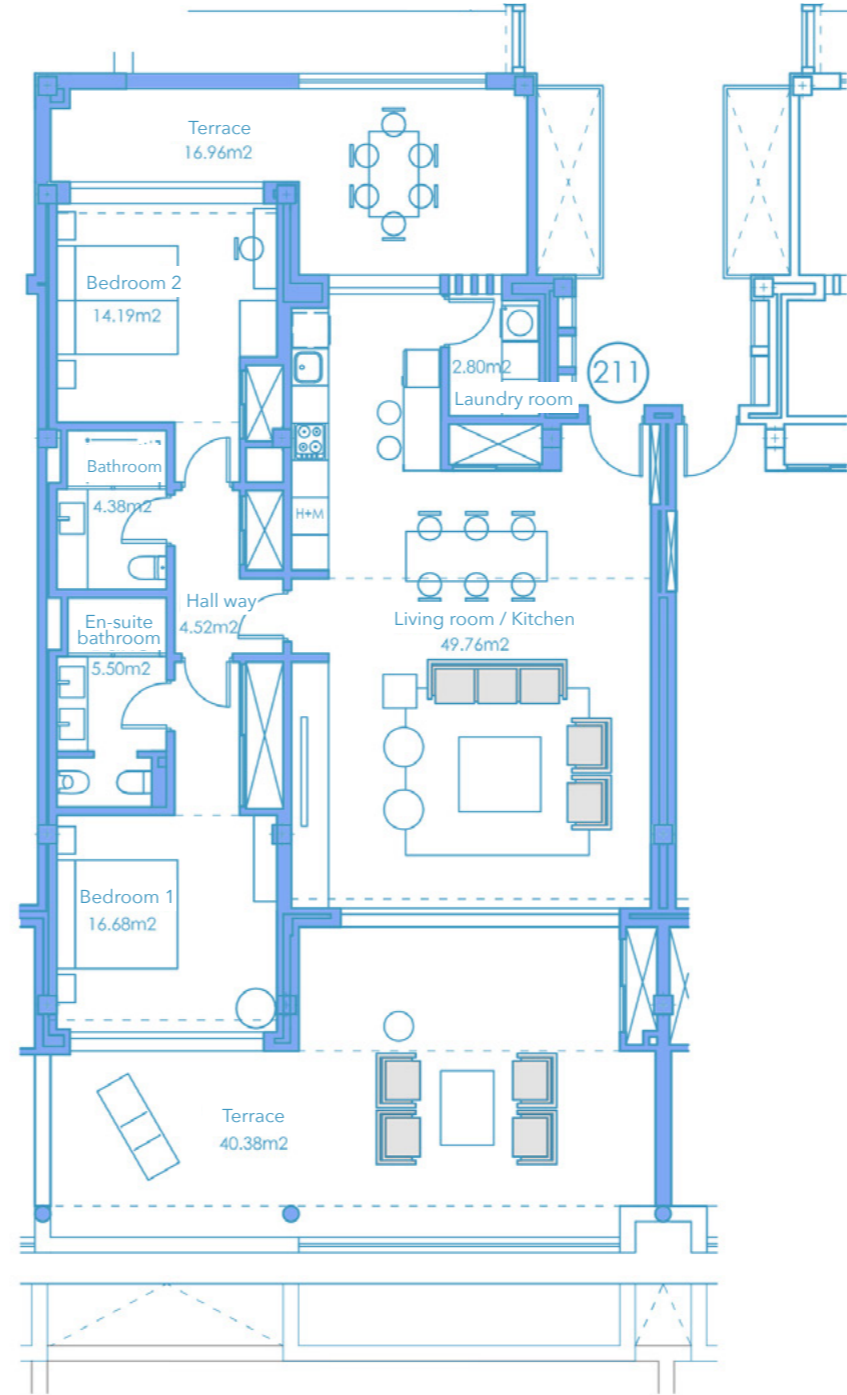


**TERRAZAS DE CORTESÍN**  
*Seaviews*

First floor



Block A



SECTOR UR-10A "FINCA EL CORTESÍN" CASARES, MÁLAGA  
Information given is subject to modification for technical, construction or legal reasons

**SURFACES**

Surface of constructed area	116,46 m <sup>2</sup>
Surface of communal area	4,97 m <sup>2</sup>
Surface of terrace area	68,16 m <sup>2</sup>

**TOTAL SURFACE**

	189,59 m <sup>2</sup>
Surface of utilised area	97,86 m <sup>2</sup>
Surface of utilised terrace area	57,34 m <sup>2</sup>



BAR SCALE



# PENTHOUSE 321.1

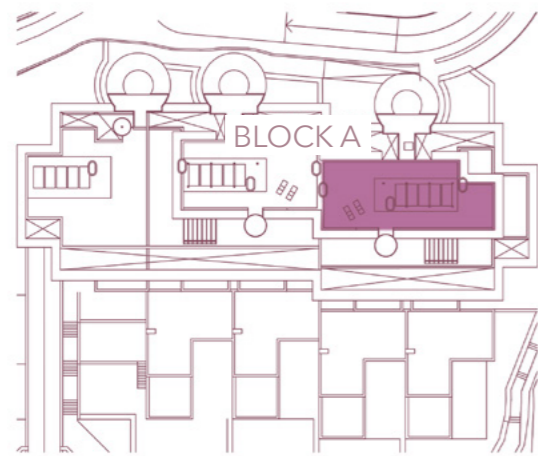
3 BEDROOMS

BLOCK A. STAIRCASE 3 PENTHOUSE FLOOR



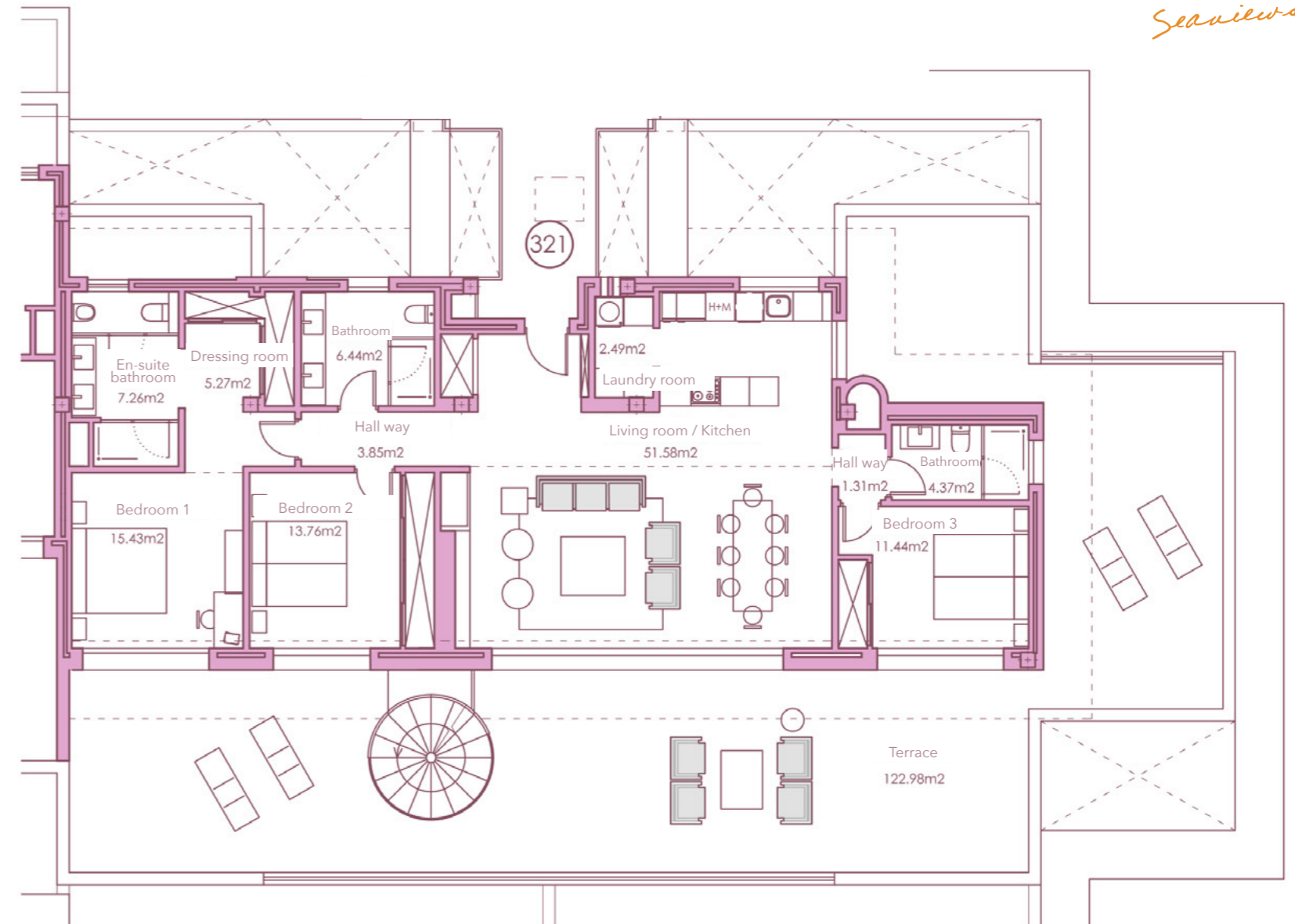
TERRAZAS DE CORTESÍN

*Seaviews*



Block A

Penthouse floor



SECTOR UR-10A "FINCA EL CORTESÍN" CASARES, MÁLAGA

Information given is subject to modification for technical, construction or legal reasons

### SURFACES

Surface of constructed area 153,64 m<sup>2</sup>  
 Surface of communal area 6,56 m<sup>2</sup>  
 Surface of terrace area 127,56 m<sup>2</sup>

TOTAL SURFACE 287,76 m<sup>2</sup>

Surface of utilised area 123,23 m<sup>2</sup>  
 Surface of utilised terrace area 122,98 m<sup>2</sup>  
 Surface of utilised solarium area 136,14 m<sup>2</sup>



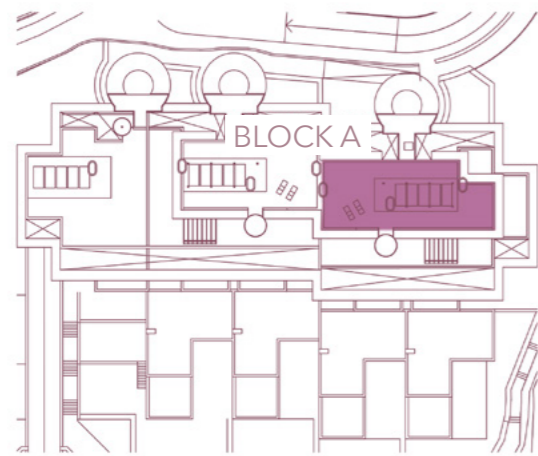
# PENTHOUSE 321.2

3 BEDROOMS

BLOCK A. STAIRCASE 3 PENTHOUSE FLOOR

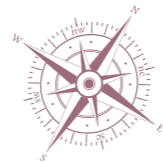
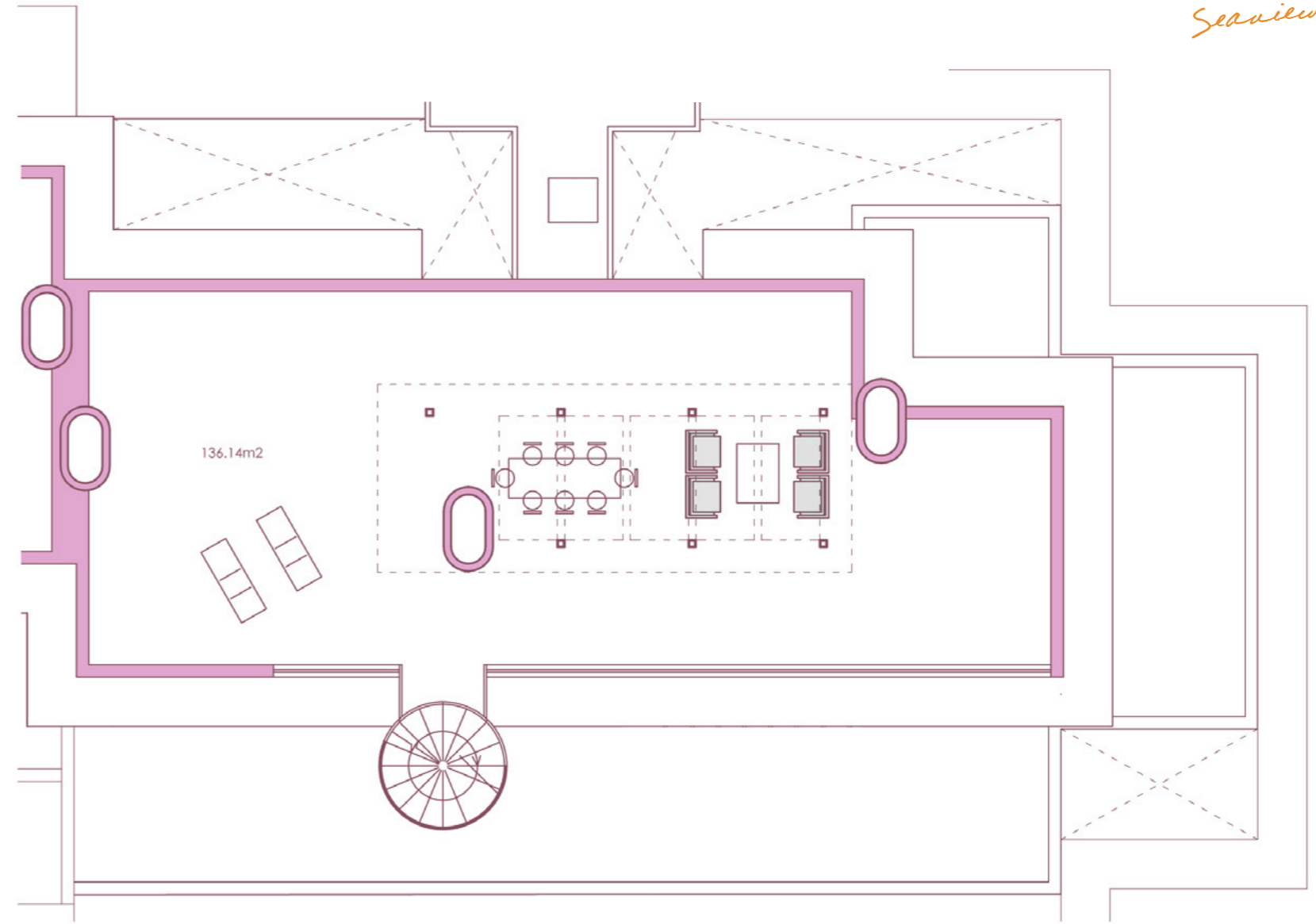


TERRAZAS DE CORTESÍN  
*Seaviews*



Block A

Penthouse floor



SECTOR UR-10A "FINCA EL CORTESÍN" CASARES, MÁLAGA

Information given is subject to modification for technical, construction or legal reasons

### SURFACES

Surface of constructed area	153,64 m <sup>2</sup>	Surface of utilised area	123,23 m <sup>2</sup>
Surface of communal area	6,56 m <sup>2</sup>	Surface of utilised terrace area	122,98 m <sup>2</sup>
Surface of terrace area	127,56 m <sup>2</sup>	Surface of utilised solarium area	136,14 m <sup>2</sup>
<b>TOTAL SURFACE</b>	<b>287,76 m<sup>2</sup></b>		

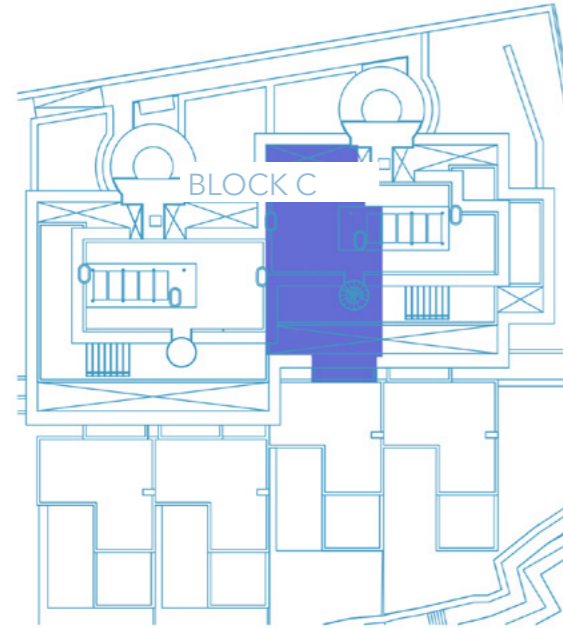




**APARTMENT 701**  
2 BEDROOMS  
BLOCK C. STAIRCASE 7 FIRST FLOOR

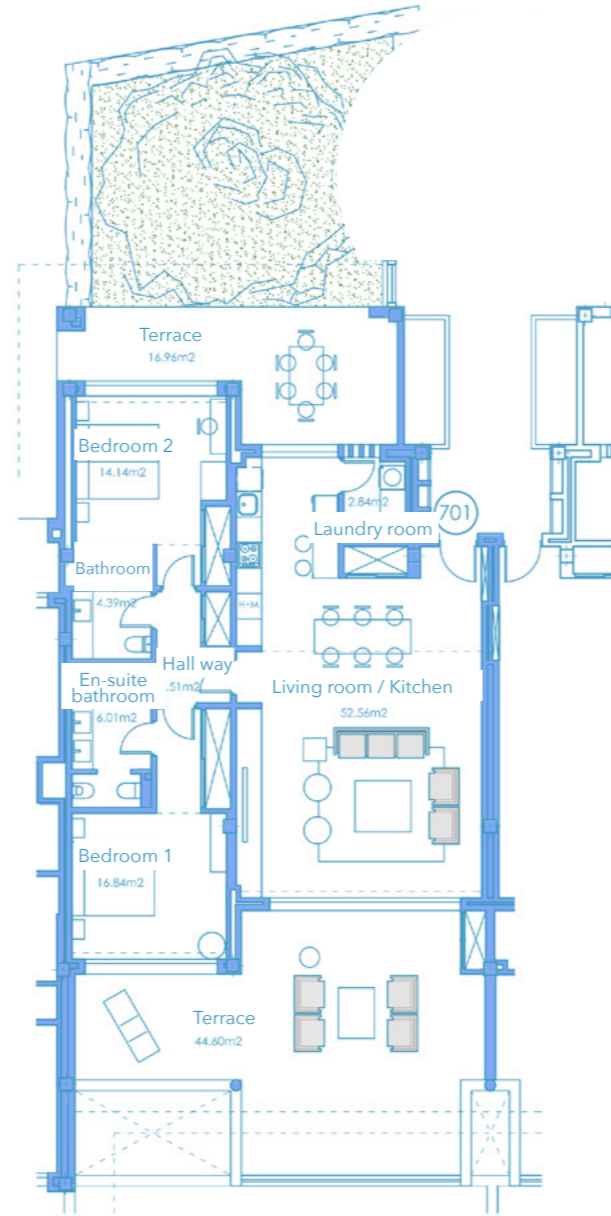


**TERRAZAS DE CORTESÍN**  
*Seaviews*



Block C

First floor



SECTOR UR-10A "FINCA EL CORTESÍN" CASARES, MÁLAGA  
Information given is subject to modification for technical, construction or legal reasons

**SURFACES**

Surface of constructed area	119,40 m <sup>2</sup>
Surface of communal area	5,09 m <sup>2</sup>
Surface of terrace area	68,29 m <sup>2</sup>

**TOTAL SURFACE**

192,78 m<sup>2</sup>

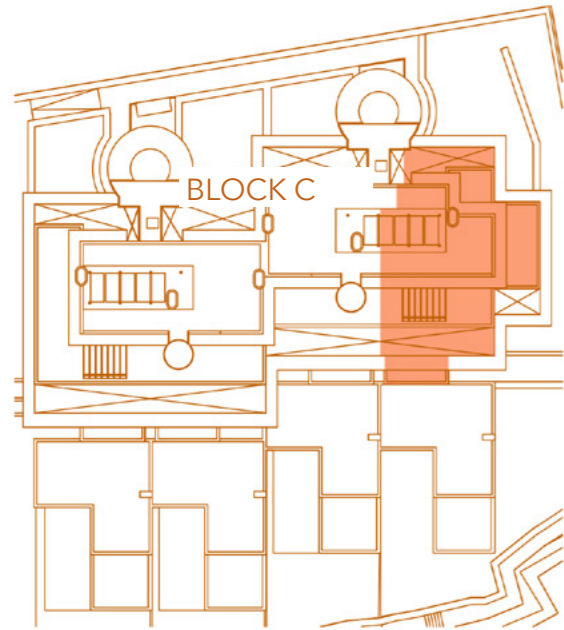
Surface of utilised area	100,30 m <sup>2</sup>
Surface of utilised terrace area	61,56 m <sup>2</sup>
Surface of utilised garden area	47,43 m <sup>2</sup>



**APARTMENT 702**  
 2 BEDROOMS  
 BLOCK C. STAIRCASE 7 FIRST FLOOR

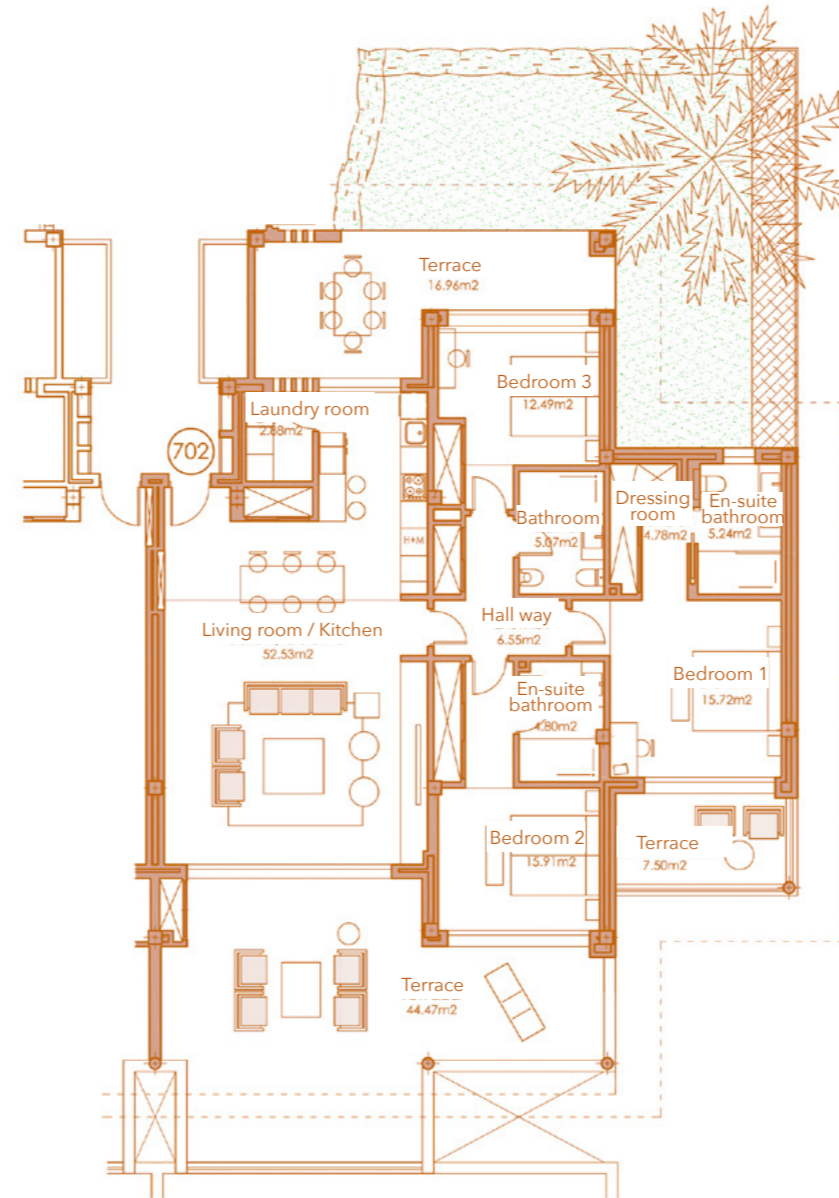


**TERRAZAS DE CORTESÍN**  
*Seaviews*



Block C

Ground floor



SECTOR UR-10A "FINCA EL CORTESÍN" CASARES, MÁLAGA  
 Information given is subject to modification for technical, construction or legal reasons

<b>SURFACES</b>	
Surface of constructed area	151,55 m <sup>2</sup>
Surface of communal area	6,47 m <sup>2</sup>
Surface of terrace area	77,84 m <sup>2</sup>
<b>TOTAL SURFACE</b>	<b>235,86 m<sup>2</sup></b>
Surface of utilised area	126,01 m <sup>2</sup>
Surface of utilised terrace area	68,93 m <sup>2</sup>
Surface of utilised garden area	148,37 m <sup>2</sup>



BAR SCALE



TERRAZAS DE CORTESÍN  
*Seaviews*



## LUXURY DUPLEX APARTMENTS

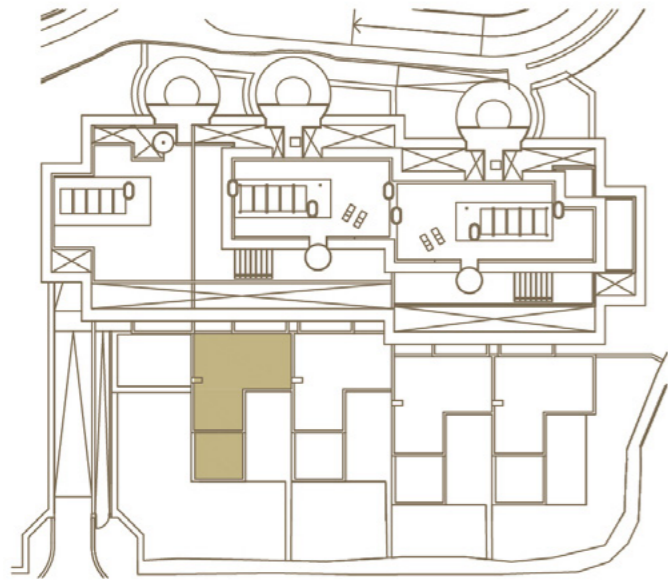




LUXURY DUPLEX APARTMENT 1  
3 BEDROOMS  
BLOCK A. STAIRCASE 2 GROUND FLOOR - GARDEN

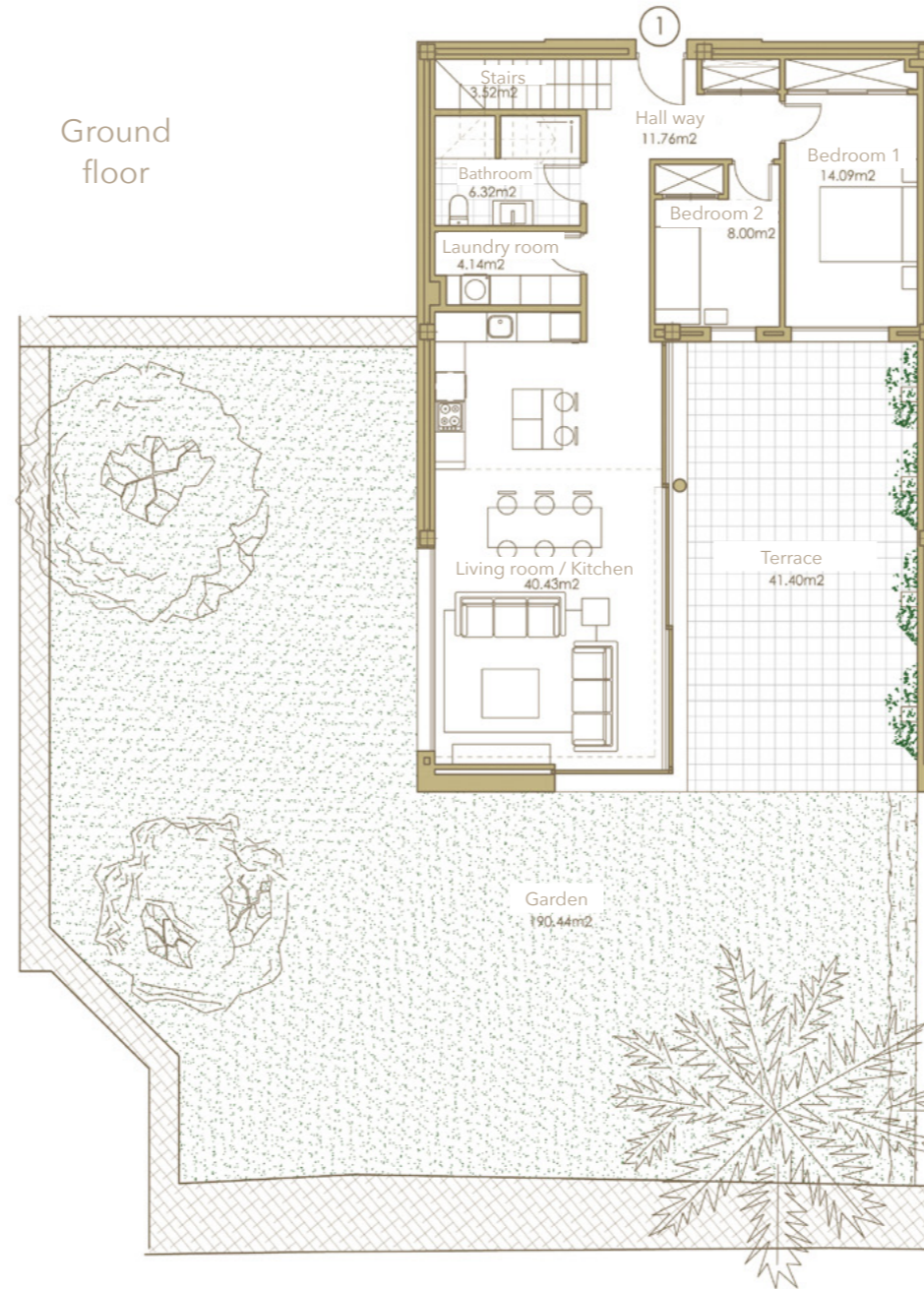


TERRAZAS DE CORTESÍN  
*Seaviews*

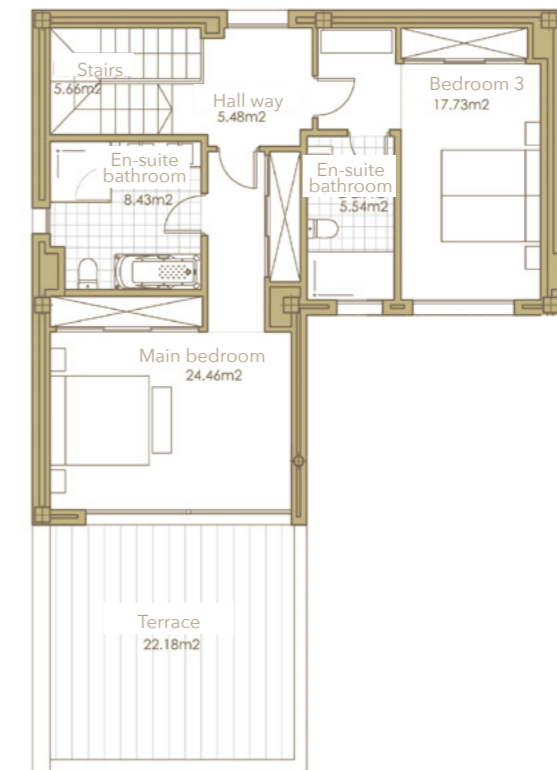


Block A

Ground floor



First floor



SECTOR UR-10A "FINCA EL CORTESÍN" CASARES, MÁLAGA  
Information given is subject to modification for technical, construction or legal reasons

SURFACES

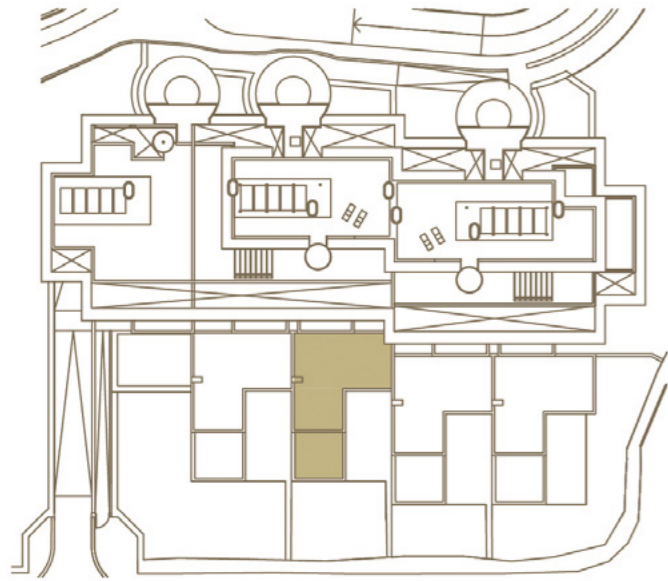
Surface of constructed area	184,56 m <sup>2</sup>	Surface of utilised area	155,56 m <sup>2</sup>
Surface of communal area	7,88 m <sup>2</sup>	Surface of utilised terrace area	63,58 m <sup>2</sup>
Surface of terrace area	69,43 m <sup>2</sup>	Surface of utilised garden area	190,44 m <sup>2</sup>
<b>TOTAL SURFACE</b>	<b>261,87 m<sup>2</sup></b>		



LUXURY DUPLEX APARTMENT 2  
3 BEDROOMS  
BLOCK A. STAIRCASE 2 GROUND FLOOR - GARDEN

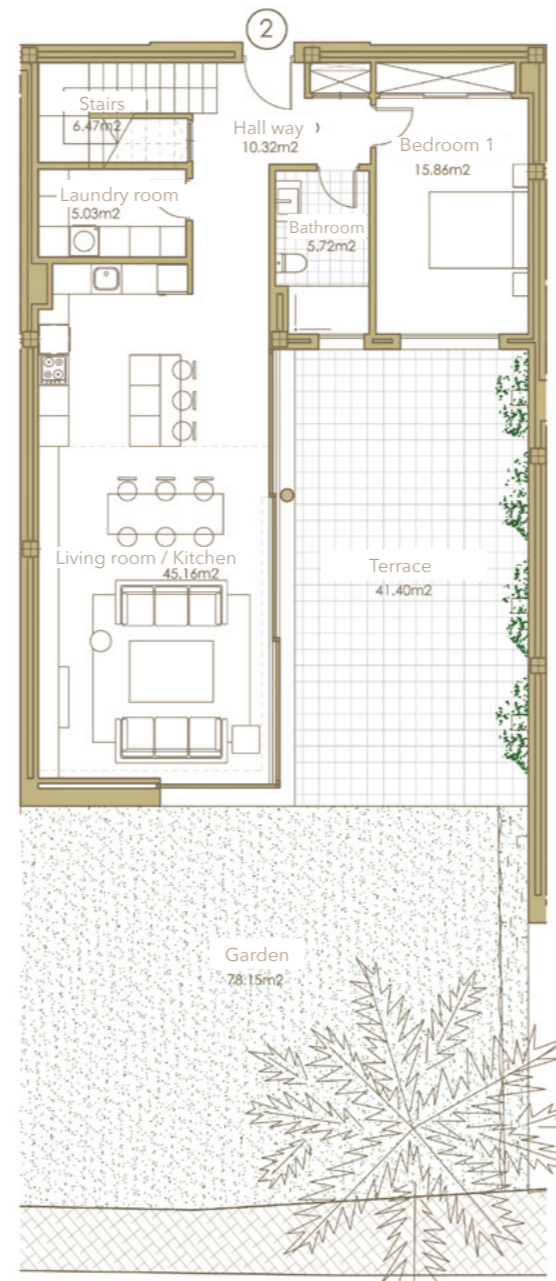


TERRAZAS DE CORTESÍN  
*Seaviews*



Block A

Ground floor



First floor



SECTOR UR-10A "FINCA EL CORTESÍN" CASARES, MÁLAGA  
Information given is subject to modification for technical, construction or legal reasons

SURFACES			
Surface of constructed area	184,56 m <sup>2</sup>	Surface of utilised area	155,84 m <sup>2</sup>
Surface of communal area	7,88 m <sup>2</sup>	Surface of utilised terrace area	63,58 m <sup>2</sup>
Surface of terrace area	69,43 m <sup>2</sup>	Surface of utilised garden area	78,10 m <sup>2</sup>
<b>TOTAL SURFACE</b>	<b>261,87 m<sup>2</sup></b>		



# LUXURY DUPLEX APARTMENT 3

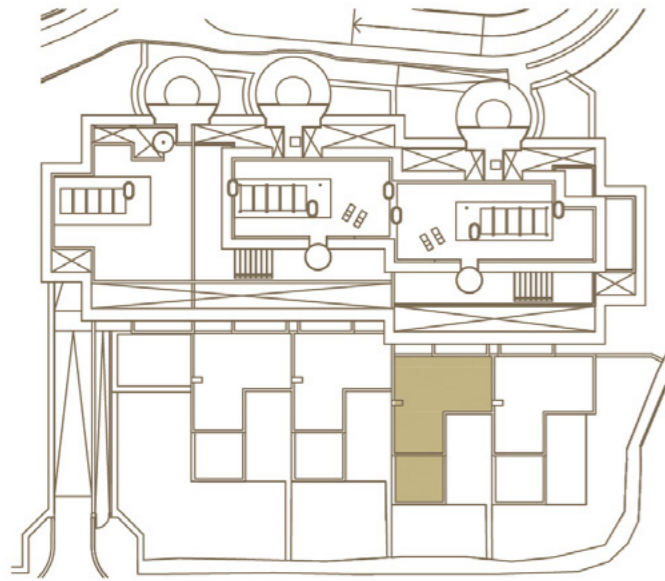
3 BEDROOMS

BLOCK A. STAIRCASE 3 GROUND FLOOR - GARDEN



TERRAZAS DE CORTESÍN

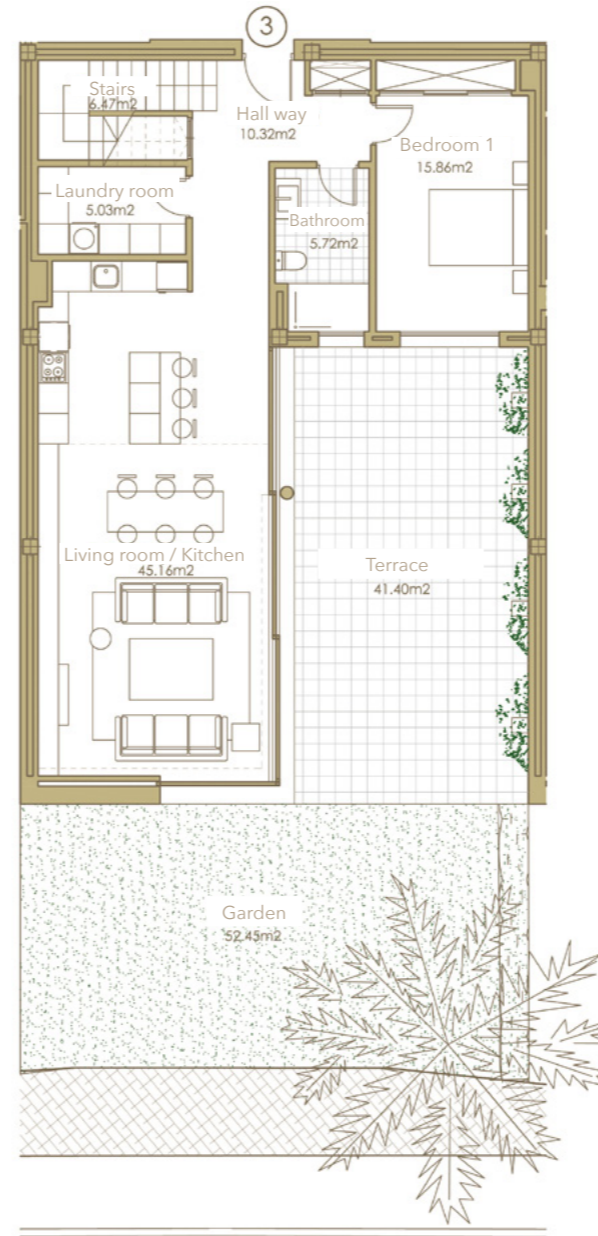
*Seaviews*



Block A



Ground floor



First floor



SECTOR UR-10A "FINCA EL CORTESÍN" CASARES, MÁLAGA  
 Information given is subject to modification for technical, construction or legal reasons

SURFACES			
Surface of constructed area	184,56 m <sup>2</sup>	Surface of utilised area	155,84 m <sup>2</sup>
Surface of communal area	7,88 m <sup>2</sup>	Surface of utilised terrace area	63,58 m <sup>2</sup>
Surface of terrace area	69,43 m <sup>2</sup>	Surface of utilised garden area	52,45 m <sup>2</sup>
<b>TOTAL SURFACE</b>	<b>261,87 m<sup>2</sup></b>		



# LUXURY DUPLEX APARTMENT 4

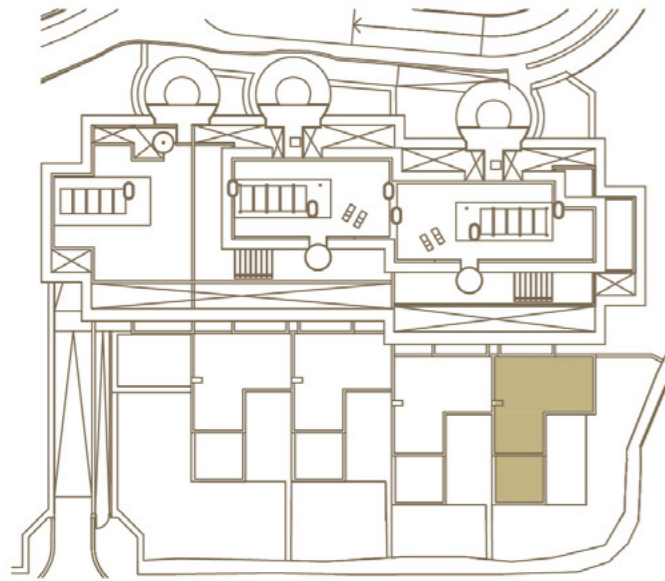
3 BEDROOMS

BLOCK A. STAIRCASE 3 GROUND FLOOR - GARDEN



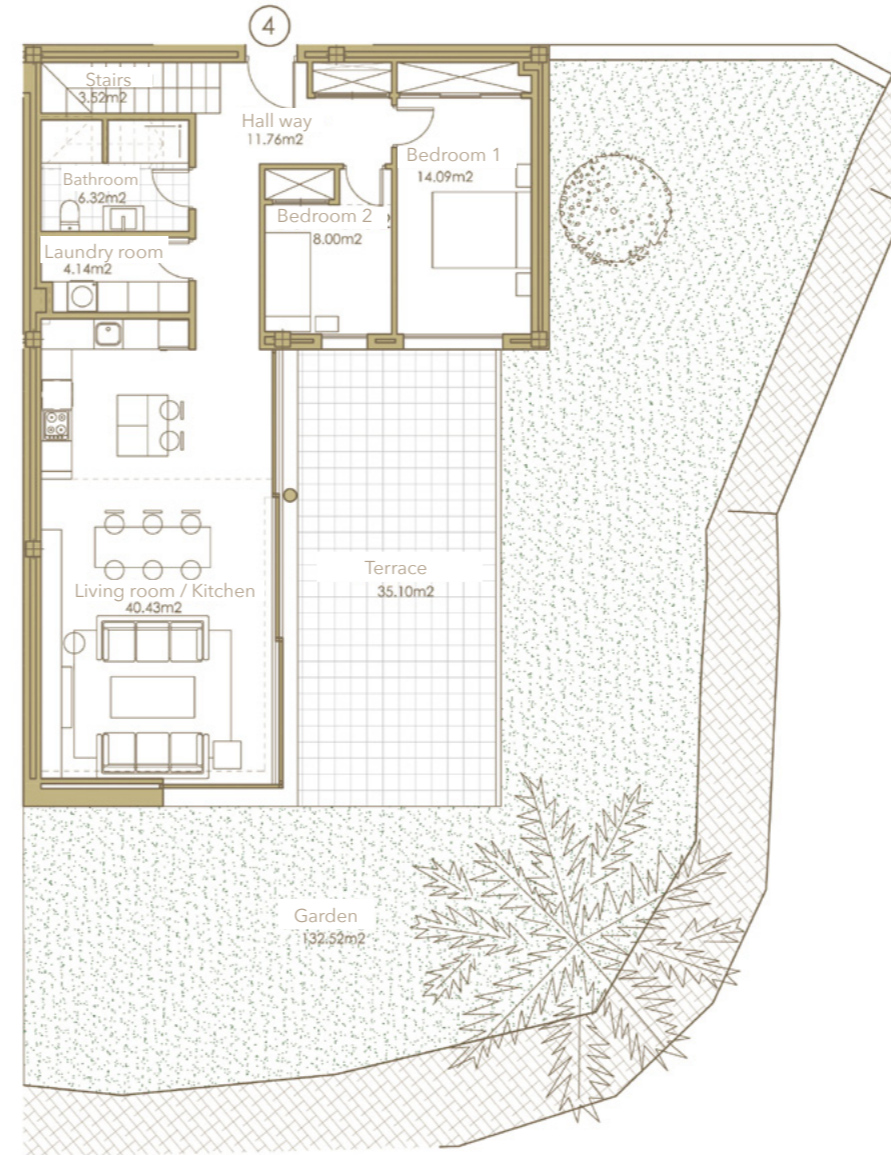
TERRAZAS DE CORTESÍN

*Seaviews*

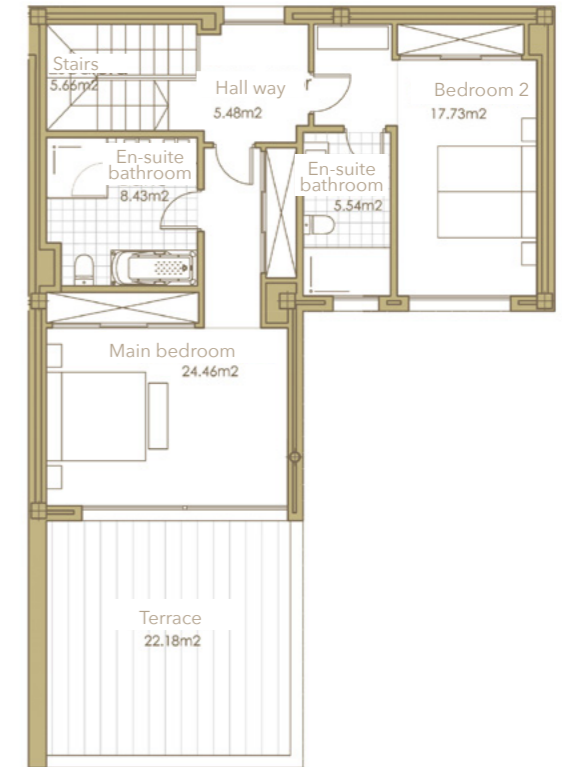


Block A

Ground floor



First floor



SECTOR UR-10A "FINCA EL CORTESÍN" CASARES, MÁLAGA  
 Information given is subject to modification for technical, construction or legal reasons

SURFACES			
Surface of constructed area	184,56 m <sup>2</sup>	Surface of utilised area	155,56 m <sup>2</sup>
Surface of communal area	7,88 m <sup>2</sup>	Surface of utilised terrace area	57,28 m <sup>2</sup>
Surface of terrace area	62,30 m <sup>2</sup>	Surface of utilised garden area	132,52 m <sup>2</sup>
<b>TOTAL SURFACE</b>	<b>254,74 m<sup>2</sup></b>		



# LUXURY DUPLEX APARTMENT 5

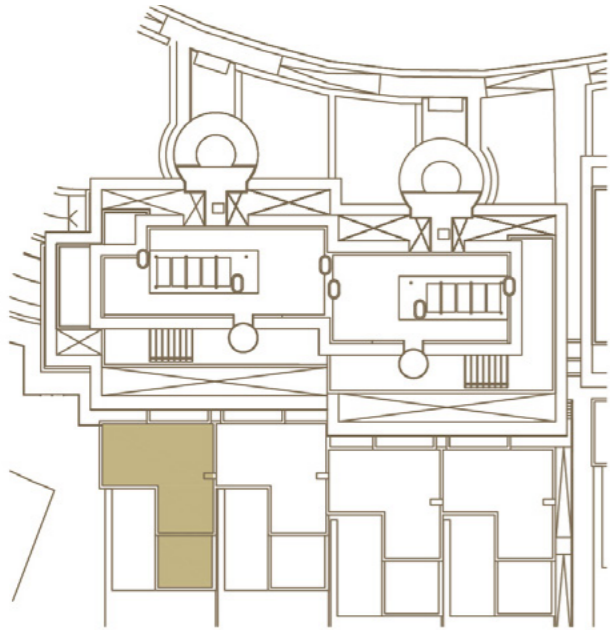
3 BEDROOMS

BLOCK A. STAIRCASE 4 GROUND FLOOR - GARDEN



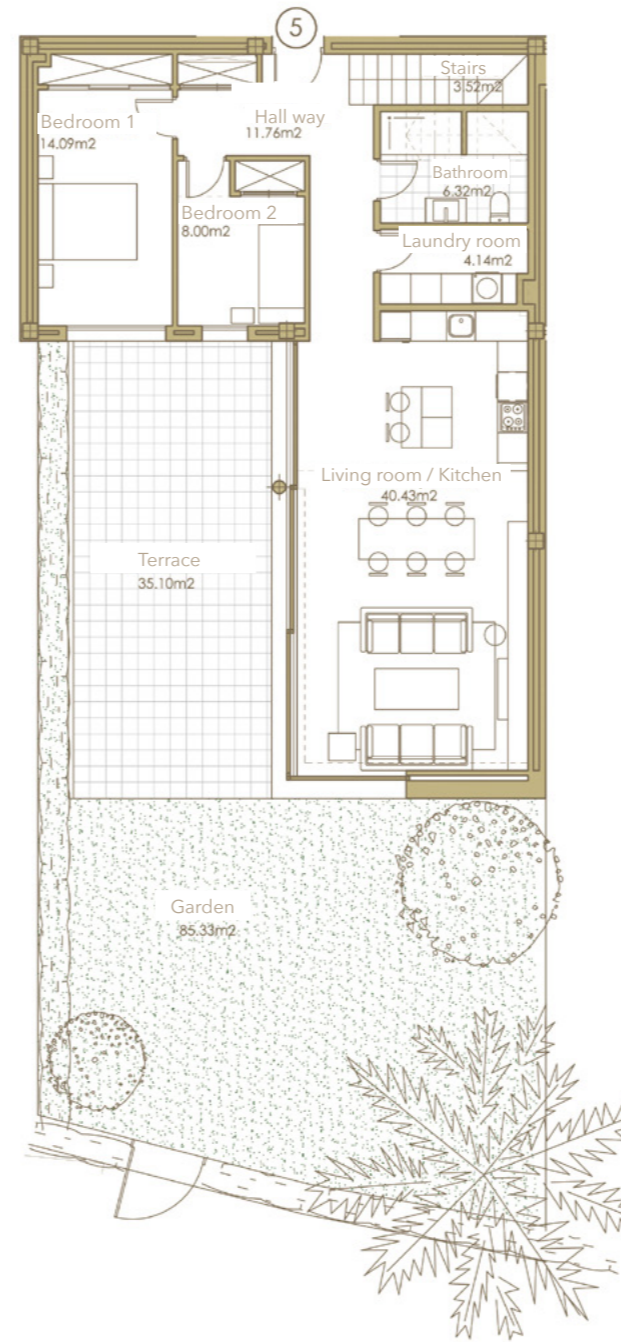
TERRAZAS DE CORTESÍN

*Seaviews*

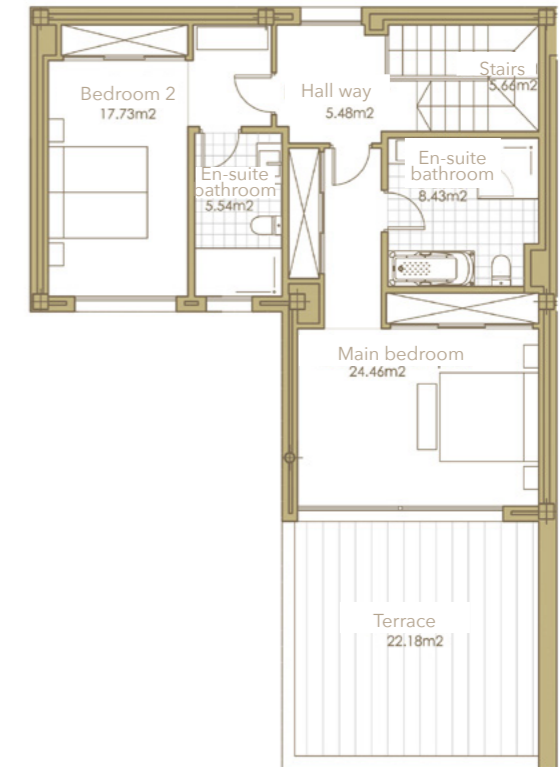


Block B

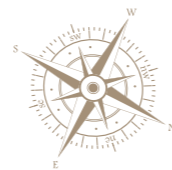
Ground floor



First floor



BAR SCALE



SECTOR UR-10A "FINCA EL CORTESÍN" CASARES, MÁLAGA

Information given is subject to modification for technical, construction or legal reasons

### SURFACES

Surface of constructed area	184,56 m <sup>2</sup>	Surface of utilised area	155,56 m <sup>2</sup>
Surface of communal area	7,88 m <sup>2</sup>	Surface of utilised terrace area	57,28 m <sup>2</sup>
Surface of terrace area	62,30 m <sup>2</sup>	Surface of utilised garden area	85,33 m <sup>2</sup>
<b>TOTAL SURFACE</b>	<b>254,74 m<sup>2</sup></b>		





# LUXURY DUPLEX APARTMENT 6

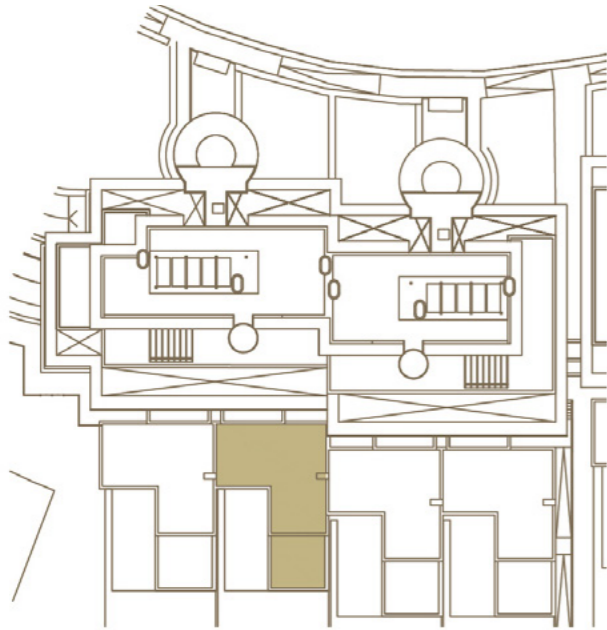
3 BEDROOMS

BLOCK B. STAIRCASE 4 GROUND FLOOR - GARDEN



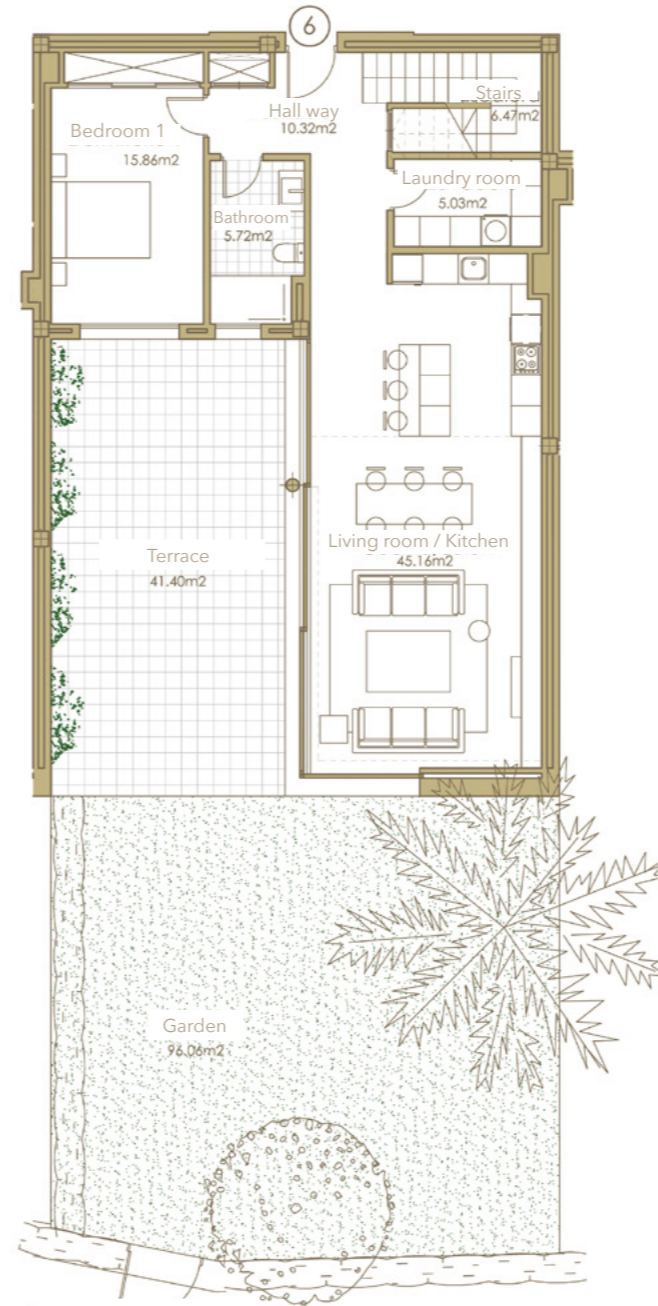
TERRAZAS DE CORTESÍN

*Seaviews*

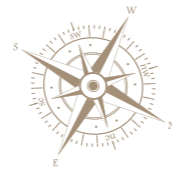
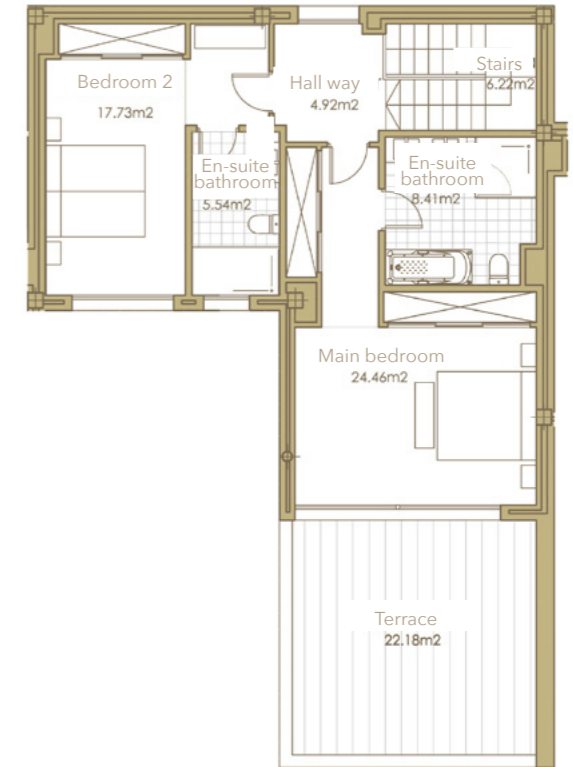


Block B

Ground floor



First floor



SECTOR UR-10A "FINCA EL CORTESÍN" CASARES, MÁLAGA

Information given is subject to modification for technical, construction or legal reasons

### SURFACES

Surface of constructed area	184,56 m <sup>2</sup>	Surface of utilised area	155,84 m <sup>2</sup>
Surface of communal area	7,88 m <sup>2</sup>	Surface of utilised terrace area	63,58 m <sup>2</sup>
Surface of terrace area	69,43 m <sup>2</sup>	Surface of utilised garden area	96,06 m <sup>2</sup>
<b>TOTAL SURFACE</b>	<b>261,87 m<sup>2</sup></b>		



# LUXURY DUPLEX APARTMENT 7

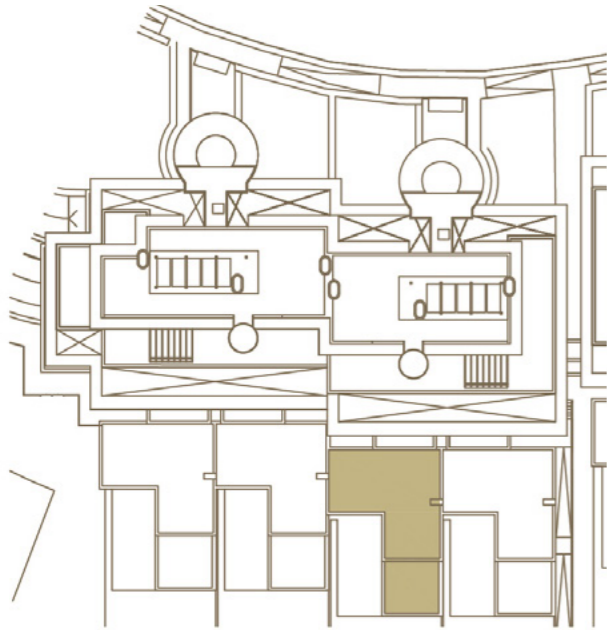
3 BEDROOMS

BLOCK B. STAIRCASE 5 GROUND FLOOR - GARDEN

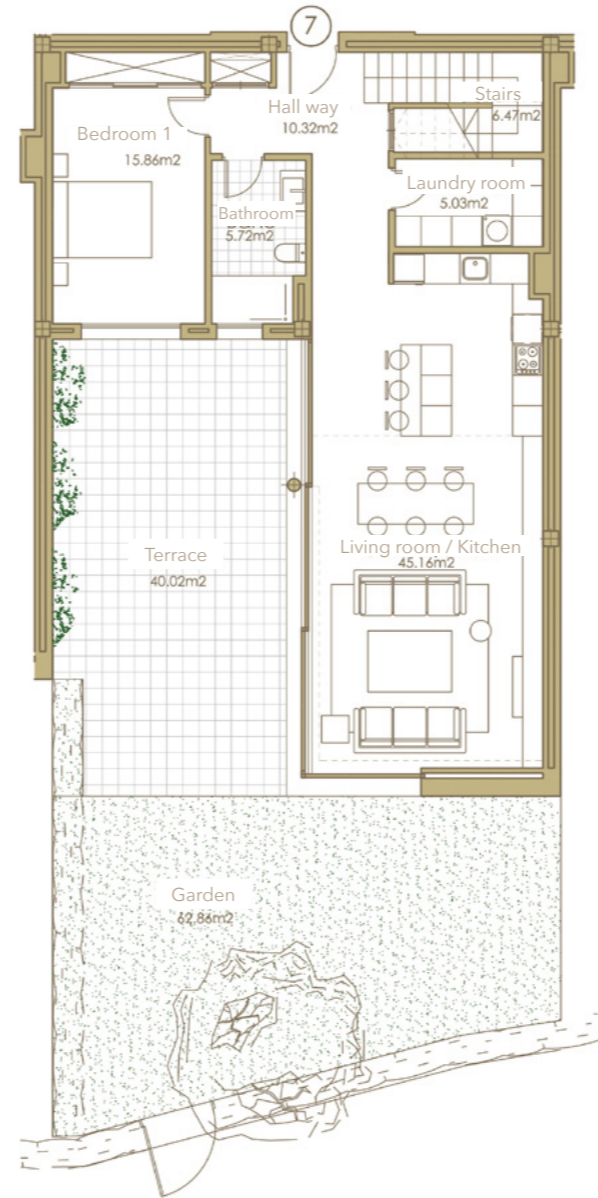


TERRAZAS DE CORTESÍN

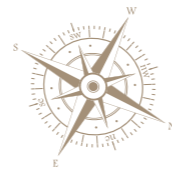
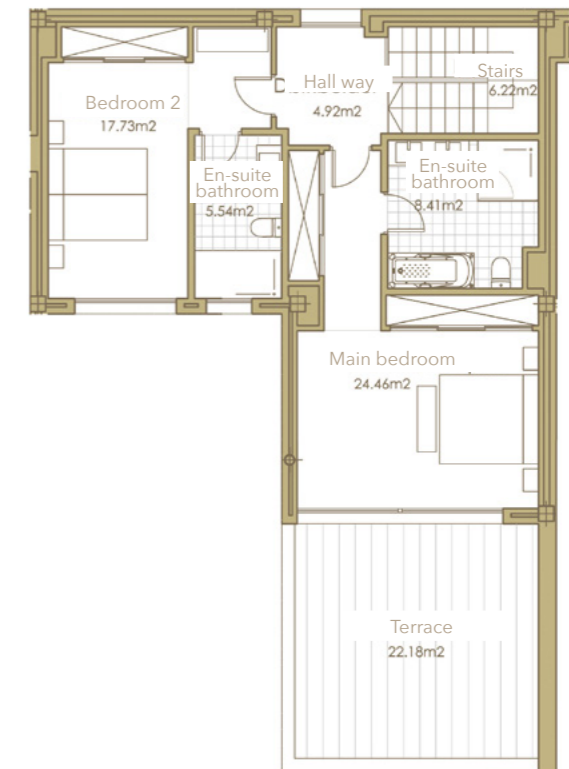
*Seaviews*



Block B



First floor



SECTOR UR-10A "FINCA EL CORTESÍN" CASARES, MÁLAGA

Information given is subject to modification for technical, construction or legal reasons

### SURFACES

Surface of constructed area	184,56 m <sup>2</sup>	Surface of utilised area	155,84 m <sup>2</sup>
Surface of communal area	7,88 m <sup>2</sup>	Surface of utilised terrace area	62,20 m <sup>2</sup>
Surface of terrace area	67,69 m <sup>2</sup>	Surface of utilised garden area	62,86 m <sup>2</sup>
<b>TOTAL SURFACE</b>	<b>260,13 m<sup>2</sup></b>		



# LUXURY DUPLEX APARTMENT 8

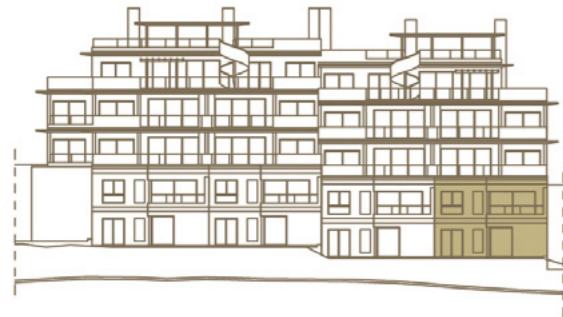
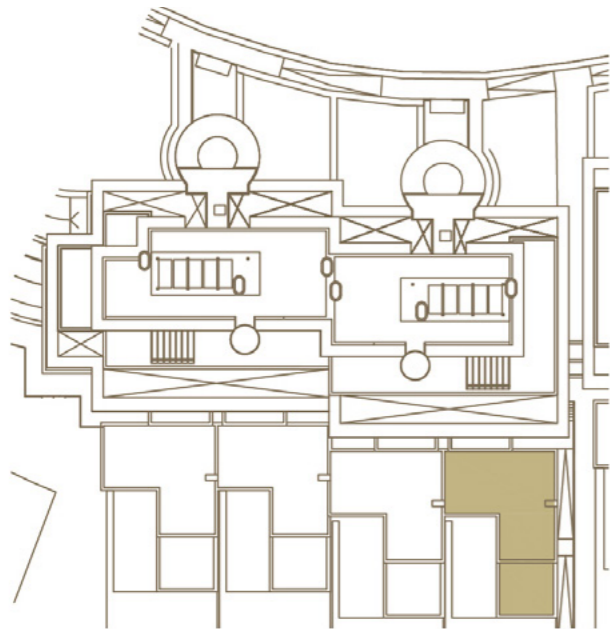
3 BEDROOMS

BLOCK B. STAIRCASE 5 GROUND FLOOR - GARDEN



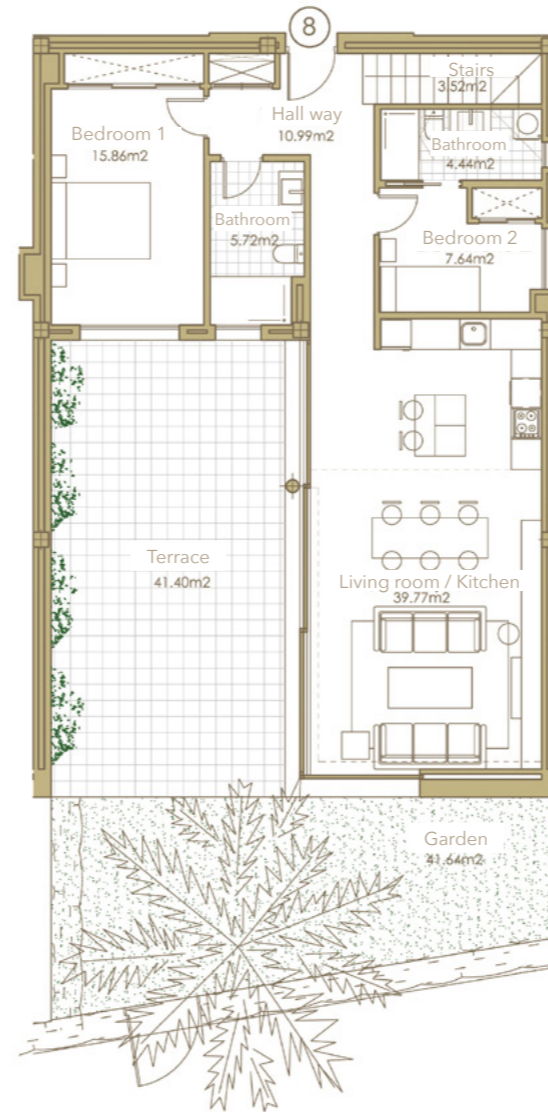
TERRAZAS DE CORTESÍN

*Seaviews*

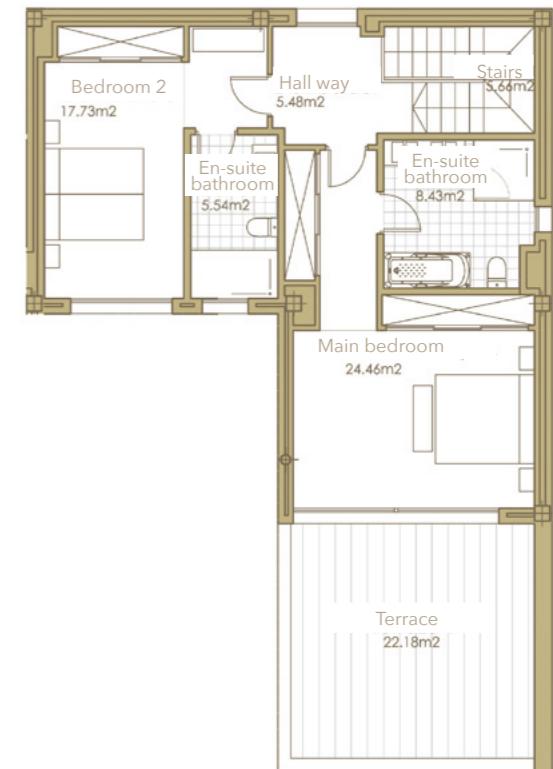


Block B

Ground floor



First floor



SECTOR UR-10A "FINCA EL CORTESÍN" CASARES, MÁLAGA

Information given is subject to modification for technical, construction or legal reasons

### SURFACES

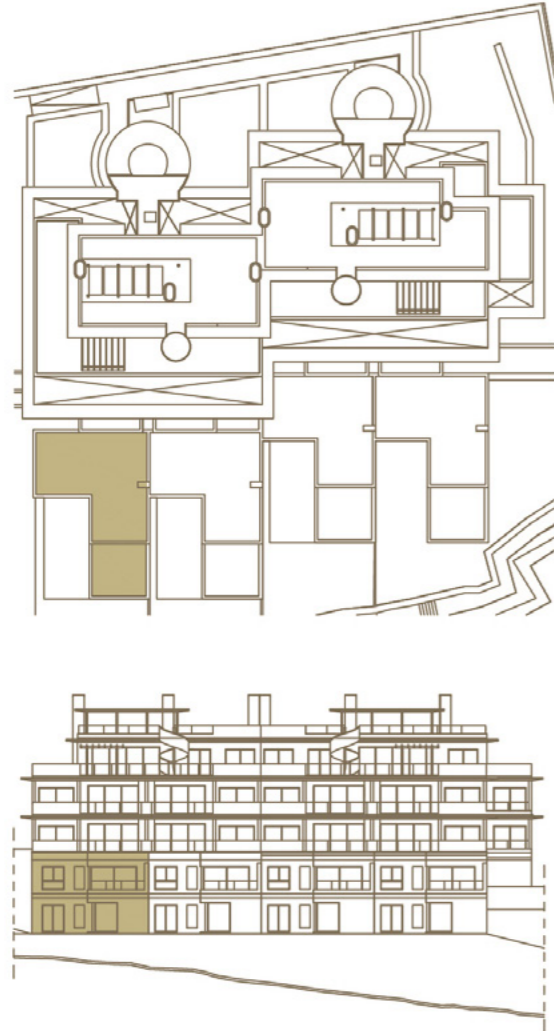
Surface of constructed area	184,56 m <sup>2</sup>	Surface of utilised area	155,24 m <sup>2</sup>
Surface of communal area	7,88 m <sup>2</sup>	Surface of utilised terrace area	63,58 m <sup>2</sup>
Surface of terrace area	69,43 m <sup>2</sup>	Surface of utilised garden area	41,64 m <sup>2</sup>
<b>TOTAL SURFACE</b>	<b>218,74 m<sup>2</sup></b>		



LUXURY DUPLEX APARMENT 9  
3 BEDROOMS  
BLOCK C. STAIRCASE 6 GROUND FLOOR - GARDEN

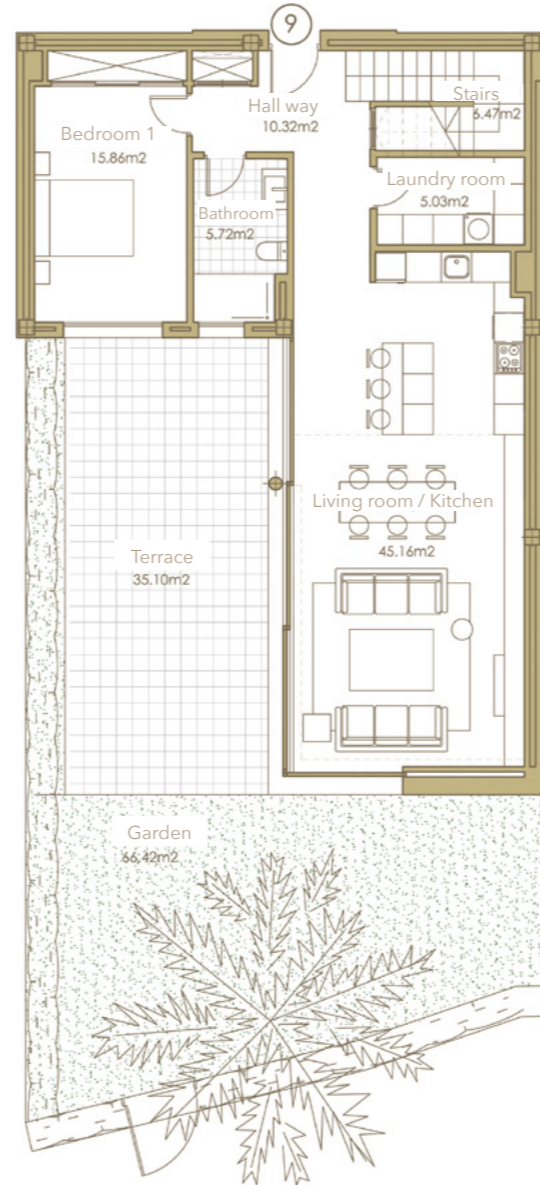


TERRAZAS DE CORTESÍN  
*Seaviews*

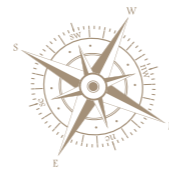
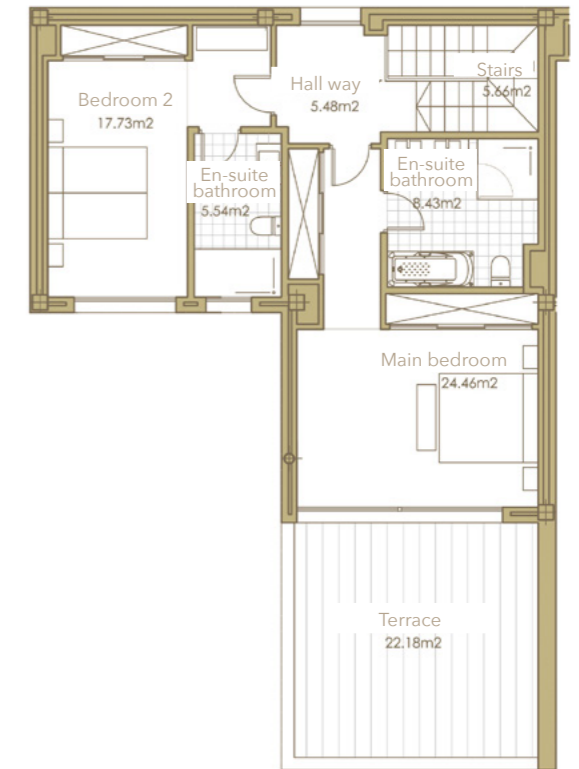


Block C

Ground floor



First floor



SECTOR UR-10A "FINCA EL CORTESÍN" CASARES, MÁLAGA  
Information given is subject to modification for technical, construction or legal reasons

SURFACES

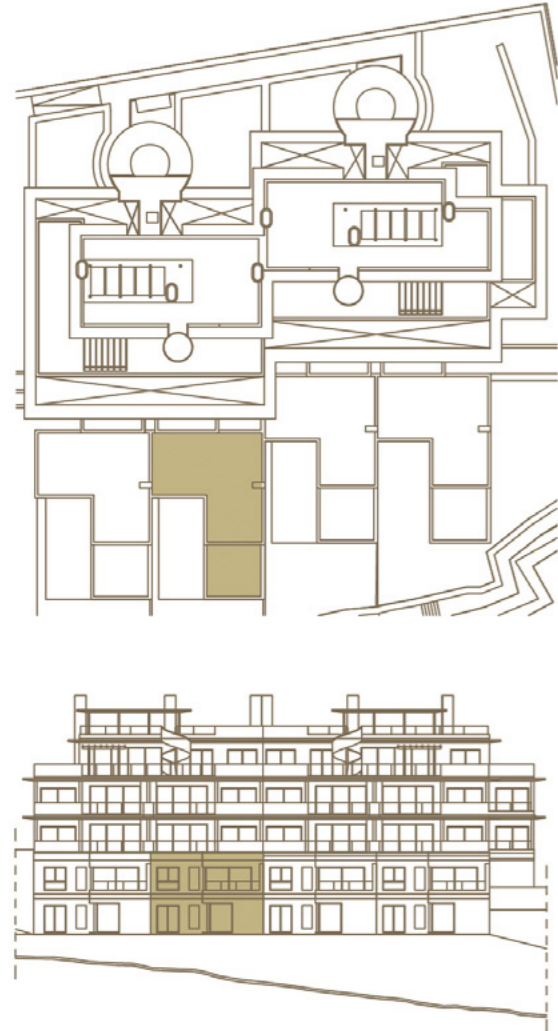
Surface of constructed area	184,56 m <sup>2</sup>	Surface of utilised area	155,86 m <sup>2</sup>
Surface of communal area	7,88 m <sup>2</sup>	Surface of utilised terrace area	57,28 m <sup>2</sup>
Surface of terrace area	62,30 m <sup>2</sup>	Surface of utilised garden area	66,42 m <sup>2</sup>
<b>TOTAL SURFACE</b>	<b>254,74 m<sup>2</sup></b>		



LUXURY DUPLEX APARMENT 10  
3 BEDROOMS  
BLOCK C. STAIRCASE 6 GROUND FLOOR - GARDEN

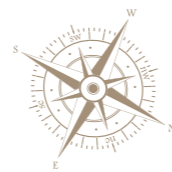
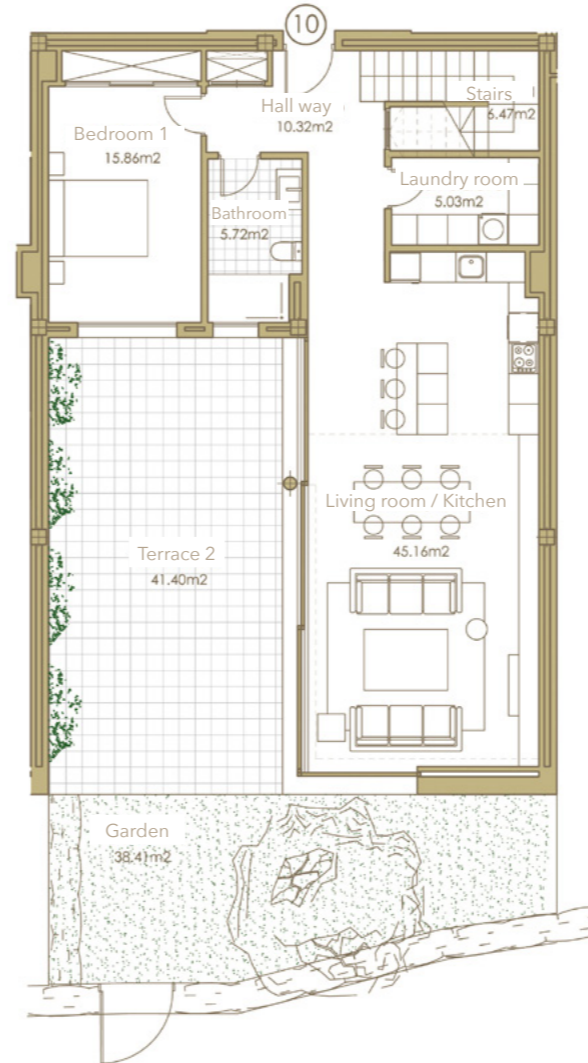


TERRAZAS DE CORTESÍN  
*Seaviews*



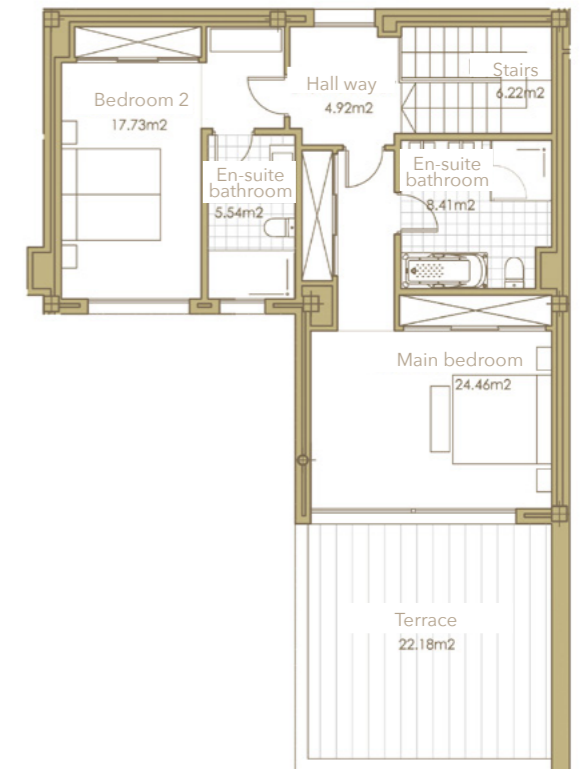
Block C

Ground floor



SECTOR UR-10A "FINCA EL CORTESÍN" CASARES, MÁLAGA  
Information given is subject to modification for technical, construction or legal reasons

First floor



SURFACES	
Surface of constructed area	184,56 m <sup>2</sup>
Surface of communal area	7,88 m <sup>2</sup>
Surface of terrace area	69,43 m <sup>2</sup>
<b>TOTAL SURFACE</b>	<b>261,87 m<sup>2</sup></b>

Surface of utilised area	155,84 m <sup>2</sup>
Surface of utilised terrace area	63,58 m <sup>2</sup>
Surface of utilised garden area	38,41 m <sup>2</sup>



# LUXURY DUPLEX APARTMENT

## 11

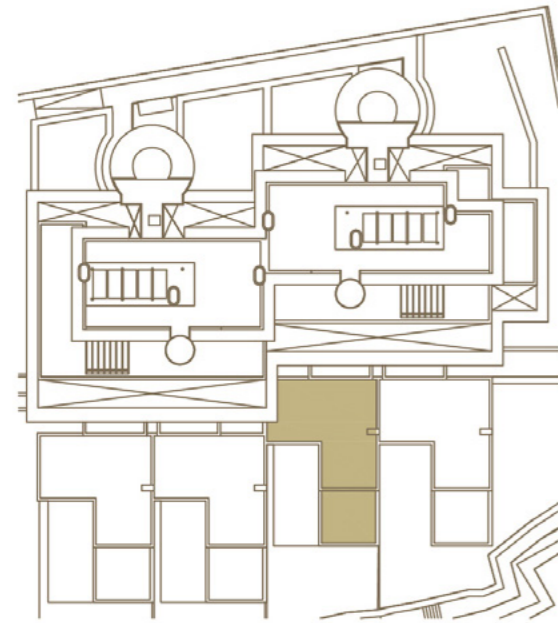
3 BEDROOMS

BLOCK C. STAIRCASE 7 GROUND FLOOR - GARDEN



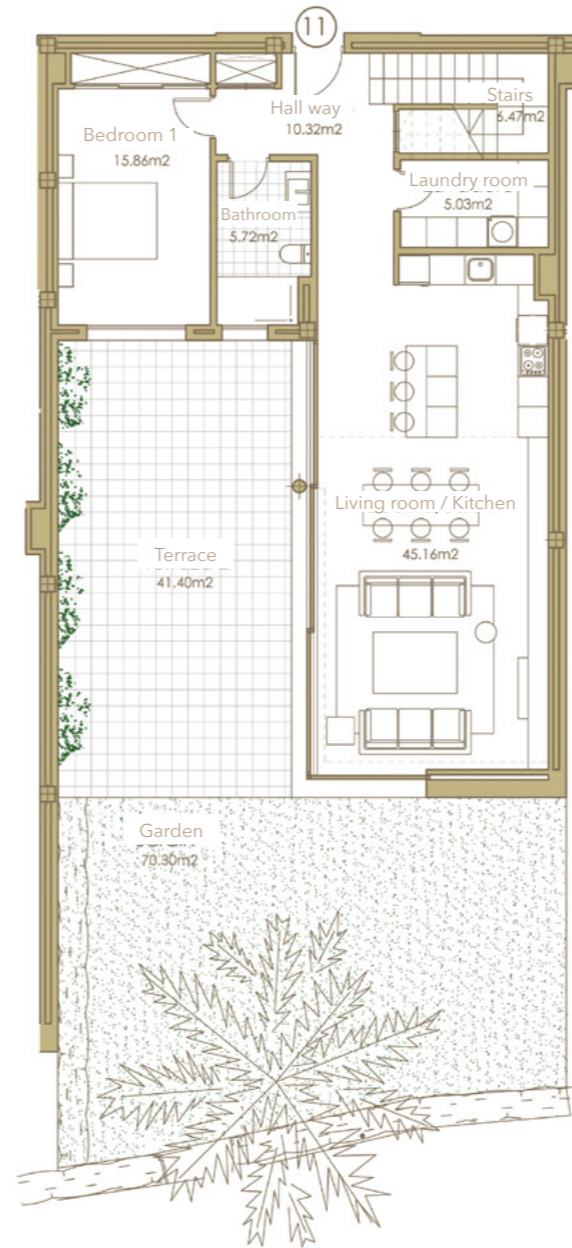
TERRAZAS DE CORTESÍN

*Seaview*

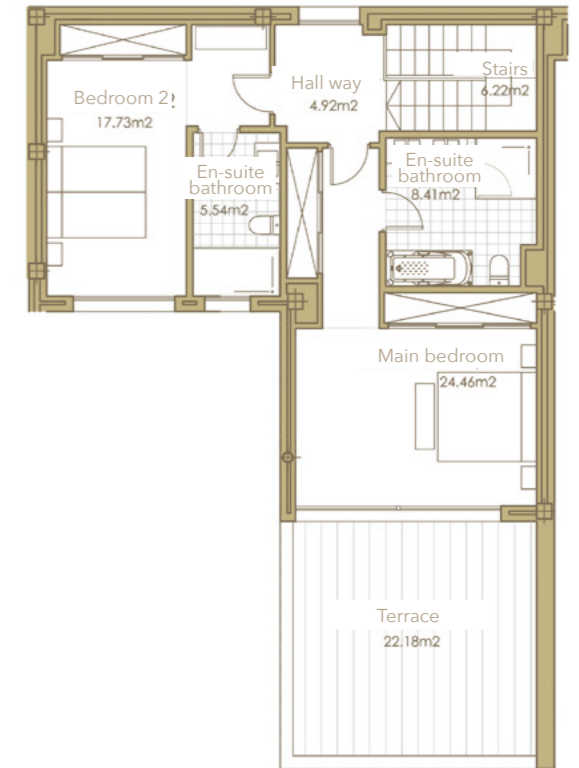


Block C

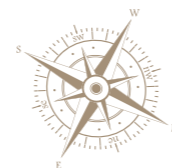
Ground floor



First floor



BAR SCALE



SECTOR UR-10A "FINCA EL CORTESÍN" CASARES, MÁLAGA

Information given is subject to modification for technical, construction or legal reasons

### SURFACES

Surface of constructed area	184,56 m <sup>2</sup>	Surface of utilised area	155,84 m <sup>2</sup>
Surface of communal area	7,88 m <sup>2</sup>	Surface of utilised terrace area	63,58 m <sup>2</sup>
Surface of terrace area	69,43 m <sup>2</sup>	Surface of utilised garden area	70,30 m <sup>2</sup>
<b>TOTAL SURFACE</b>	<b>261,87 m<sup>2</sup></b>		



# LUXURY DUPLEX APARTMENT

## 12

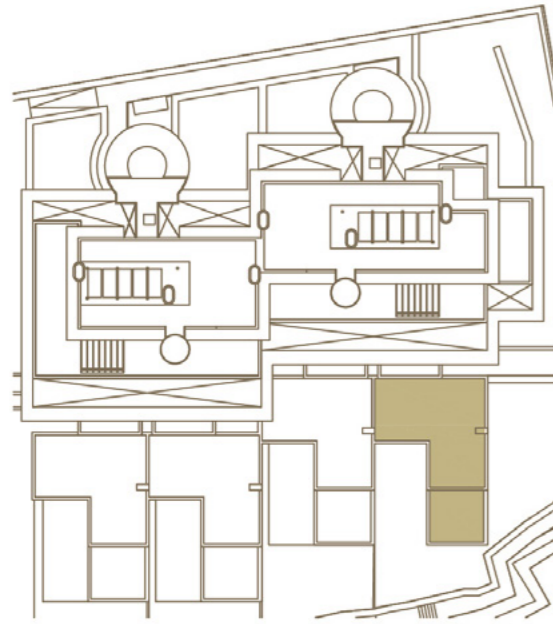
4 BEDROOMS

BLOCK C. STAIRCASE 7 GROUND FLOOR - GARDEN



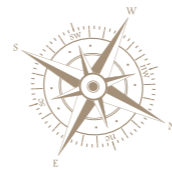
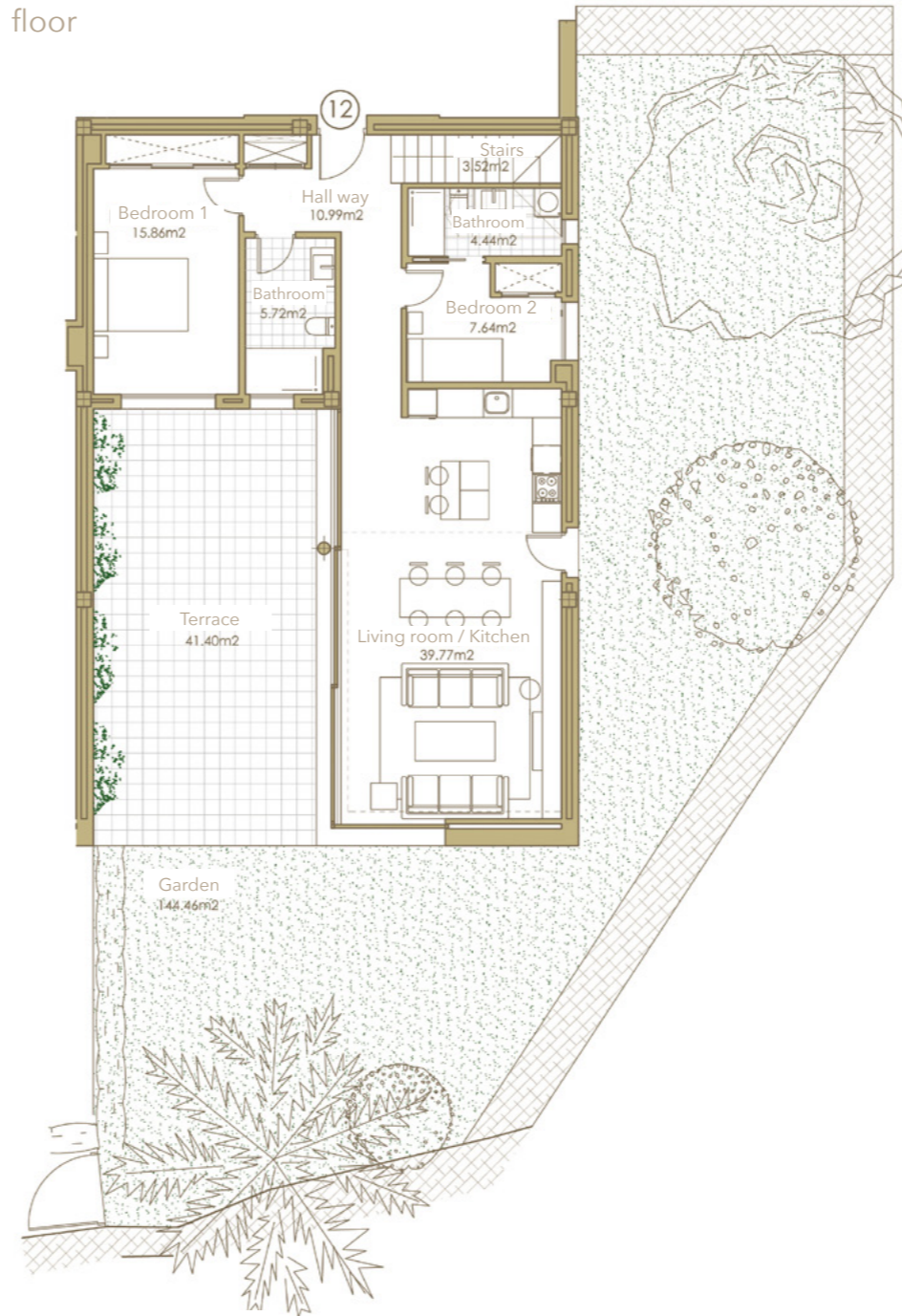
TERRAZAS DE CORTESÍN

*Seaviews*



Block C

Ground floor



SECTOR UR-10A "FINCA EL CORTESÍN" CASARES, MÁLAGA  
Information given is subject to modification for technical, construction or legal reasons

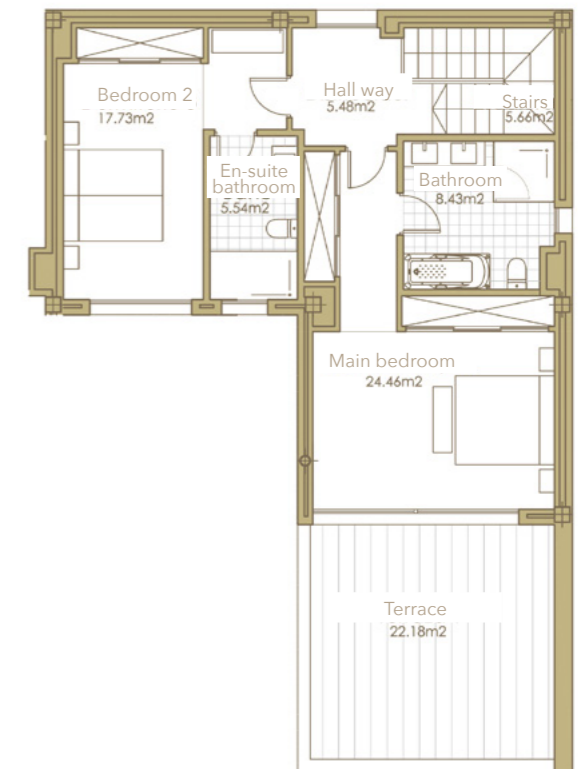
**SURFACES**

Surface of constructed area 184,56 m<sup>2</sup>  
Surface of communal area 7,88 m<sup>2</sup>  
Surface of terrace area 69,43 m<sup>2</sup>

TOTAL SURFACE 261,87 m<sup>2</sup>

Surface of utilised area 155,24 m<sup>2</sup>  
Surface of utilised terrace area 63,58 m<sup>2</sup>  
Surface of utilised garden area 144,46 m<sup>2</sup>

First floor





TERRAZAS DE CORTESÍN  
*Sea views*

In compliance with the DECREE of the Junta de Andalucía 218/2005, the useful surface of exterior floor spaces which are for the private use of the dwellings means 50% of the actual surface to a maximum of 10% the useful enclosed surface.

Information, computer graphics and graphic documentation that appear in this brochure are indicative, finishes may include extras not included are subject to changes arising from final project and its construction. All the furniture is merely decorative. The other information referred to in R.D.218/2005 of the Government of Andalusia, is available in our offices for consultation.

---





TERRAZAS DE CORTESÍN  
*Seaviews*

TERRAZAS DE CORTESIN-SEAVIEWS.

---