

Port Survey: Innovation in Architecture & Design



Port Publishing, London

Welcome to *Port's* first annual architecture and design survey, chaired by Brett Steele, Director of the Architectural Association in London. *Port* is one of the world's leading men's lifestyle magazines, covering a range of interests including style, culture, business, architecture and design. This survey aims to illuminate what consensus there may be in the industry regarding innovations in architecture, design and commissioning bodies. The results starting on page 2 are a direct reflection of three questions posed to the industry:

In 2013, who was most influential in these categories:

Architect / Architectural Practice

Designer / Design Practice

Client / Commissioning Body

The Jury

Adam Khan

Founder, Adam Khan Architects

Anders Byriel

CEO, Kvadrat

Andreas Ruby

Cofounder, Ruby Press

Andrew Yang

CEO and Creative Director, Roll & Hill

Arianna Lelli Mami

and Chiara Di Pinto

Cofounders, Studiopepe

Seyhan Özdemir

and Sefer Çağlar

Cofounders, AutoBan

Barnaba Fornasetti

Creative Director, Fornasetti

Carol Patterson

Project Director, OMA

Corin Mellor

Creative Director, David Mellor Design

David Kohn

Director, David Kohn Architects

Faye Toogood

Designer

Frank Barkow

Cofounder, Barkow Leibinger

Greg Lynn

Director, Greg Lynn FORM

Holger Struck

PR and Cultural Communications Director, Dornbracht

Ingerid Helsing Almaas

Architect and Editor

Jake Dyson

Founder, Jake Dyson Products

Jasper Morrison

Designer

Jürgen Mayer Hermann

Principal and Founder, J. Mayer H.

Kim Colin

Cofounder, Industrial Facility

Ligia Nobre

Architect

Lindsey Adelman

Founder, Lindsey Adelman Studio

Lowie Vermeersch

Founder and Design Director, Granstudio

Luke Pearson

Cofounder, PearsonLloyd

Martin Evans

Founder, Martin Evans Architects

Piero Gandini

CEO, Flos

Mattias Ståhlbom

Cofounder, TAF

Michaël Verheyden

Designer

Moritz Waldemeyer

Designer

Oliver Holy

CEO, ClassiCon

Paul Nakazawa

Associate Professor in Practice of Architecture, Harvard

Paul Priestman

Cofounder, Priestmangoode

Peter Ferretto

Founder, PWFERRETTO

Rab Bennetts

Cofounder, Bennetts Associates

Regine Leibinger

Cofounder, Barkow Leibinger

Robert Thiemann

Editor-in-Chief, Frame magazine

Roger Hawkins

Cofounder

Hawkins\Brown

Ron Gilad

Designer

Rossana Orlandi

Founder, Spazio Rossana Orlandi

Sarah Whiting

Cofounder, WW Architecture and Dean of the Rice School of Architecture

Simon Allford

Director, AHMM

Stefano Giovannoni

Director, Giovannoni Design

Takero Shimazaki

Director, Toh Shimazaki Architecture

Tej Chauhan

Founder, ChauhanStudio

Tom Llyod

Cofounder, PearsonLloyd

Wilfried Hackenbroich

Founder, Hackenbroich Architekten

Wolf D. Prix

Cofounder, COOP HIMMELB(L)AU

Zeev Aram

Founder, Aram

Port is published four times a year by Port Publishing Limited, Ground Floor 43-44 Hoxton Square London N1 6PB port-magazine.com
Chair Brett Steele **Editors** Dan Crowe, Alyn Griffiths, Kuchar Swara **Words** Alyn Griffiths **Design Research Assistant** Chloe Ashby
Art Director Kuchar Swara **Senior Designer** Ling Ko **Illustration** Alexander Wells **Sub-Editor** Kerry Patterson **Production** Nick Rainsford

With special thanks to Taylor Bloxham, Leicester

tb taylorbloxham

fa fastant

is instore

This first-ever annual worldwide survey by *Port* provides a rare glimpse into what you might call architecture's collective global consciousness: the opinions, beliefs and attitudes of architects, designers, clients, educators and collaborators about who and what, over the past year, have had the greatest impact within architecture and design. ¶ Some regular annual surveys rank professional output according to familiar (often commercial) criteria. Other tired annual award schemes are well-known registers of sector or industry-wide polling, intended to yield singular accolades and exceptionalism. Yet others try to take the temperature of architecture or design by means of widespread (at times even random) public opinion. This new annual *Portal* into the mind of architecture and design today seeks something entirely different: to find out what leading figures in architecture, design and culture *themselves* think matters the most in the world of architecture and design. The ambition is as elegant as the idea is empowering. Ultimately, what matters here is the recording of influence, of the most elusive kind, allowing the reader to glimpse how new ideas, careers and projects end up influencing other architects and designers. ¶ Because *Port* has deliberately reached beyond strict disciplinary borders and professional limits, we are left, not only with a unique, lively and truly global view of where architecture and design are now, but also this: a culture of ideas, projects and personalities, more than a profession of services, interests and identities. We wouldn't want it any other way. ¶ Many thanks to everyone, across many continents, who took part.

Brett Steele
Director, AA School of Architecture
London

Architect / Architectural Practice

1

"BIG's architecture is consistently inventive, intelligent and, perhaps most importantly, fun."
Alyn Griffiths, *Port*
Design Editor



BIG's Telus Sky Tower will transform the skyline of downtown Calgary with its typically innovative stacked façade.

BIG

Since it was founded in 2005, Bjarke Ingels Group (BIG) has gained a reputation for its programmatic approach to the relationship between urbanism and contemporary living. ¶ The Danish firm headed by Bjarke Ingels continues to grow in influence and its recent commissions reflect the regard in which it is now held worldwide. BIG's highest profile project of 2013 was the completion of the Danish National Maritime Museum in Helsingør, which is constructed inside a historic dry dock. A series of bridges crisscrossing the dock connect the museum's various facilities. ¶ The firm designed a 58-storey skyscraper in Calgary, Canada, and won several important competitions in 2013, including the master plan for a shopping and leisure facility near Paris, with a park on its roof. It will also redesign the campus of the Smithsonian Institution in Washington DC and create a visitor centre for Danish toy brand, Lego.



The Basel office founded by Jacques Herzog and Pierre de Meuron in 1978 has grown into an international team of 38 associates and around 362 global collaborators.

"Herzog & de Meuron - innovation at large"
Jürgen Mayer
Hermann,
J. Mayer H.

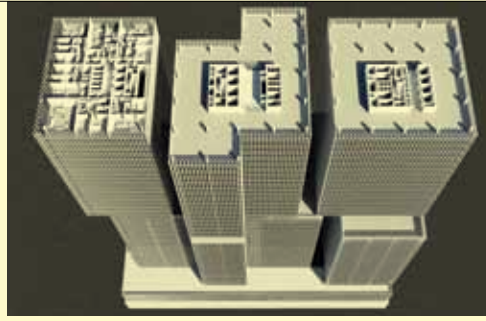
Herzog & de Meuron

Swiss firm Herzog & de Meuron has completed several major projects in the past year, including the Pérez Art Museum Miami and the addition of three new halls at the Messe Basel exhibition centre in the firm's home city. Renowned for its innovative and experimental approach to architecture, the office founded by Jacques Herzog and Pierre de Meuron in 1978 regularly engages in the design of large-scale private projects and major public buildings. ¶ Herzog & de Meuron also unveiled plans for numerous other important projects in 2013, including its successful bid to design the new M+ museum of visual culture in Hong Kong's Victoria Harbour. The firm's first station development will be the redesign of Flinders Street Station in the Australian city of Melbourne, and it was also selected to design a new building for the National Library of Israel.

2

OMA

Last year, the Netherlands' most celebrated architect, Rem Koolhaas, finally completed the country's largest building in the city where he cofounded his practice, OMA, in 1975. The De Rotterdam complex is described as a 'vertical city' and resembles a misaligned stack of gleaming glass boxes, looming over the waterfront of Rotterdam's Wilhelminapier. ¶ OMA's analytical and inventive methodologies have been applied to projects ranging from architecture to urbanism, furniture and interior design. It completed the towering Shenzhen Stock Exchange building in October and succeeded in competitions to design a major bridge in Bordeaux and a new convention centre in Miami. At the Milan Furniture Fair, OMA's research studio AMO presented a motorised furniture collection for Knoll, and 2013 also saw Koolhaas installed as the director of this year's Venice Architecture Biennale.



OMA's gargantuan De Rotterdam complex has a gross floor area of 162,000 square metres.

SANAA

Last year, Japanese studio SANAA completed a circular production facility with a façade wrapped in wavy white panels at design brand Vitra's campus in Weil am Rhein. The Tokyo office, headed by Kazuyo Sejima and Ryue Nishizawa also won a competition to design the Taichung Cultural Centre in Taiwan. Its proposal for a stack of warped boxes enveloped in a translucent mesh is typical of the Pritzker Prize-winning firm's mastery of lightness and transparency.



SANAA completed its factory building at the Vitra Campus in 2013.

Sketch of Sou Fujimoto's Serpentine Pavilion, which was constructed from a lattice of white steel poles.



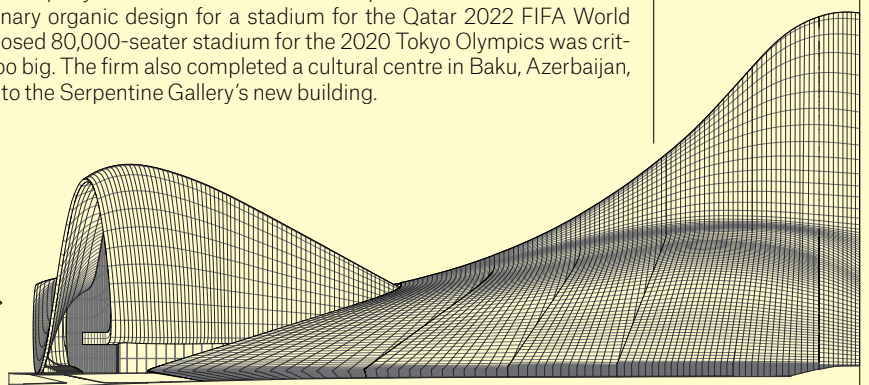
Sou Fujimoto Architects

The commission to design the summer pavilion at London's Serpentine Gallery is an honour handed to an architect at the top of their profession but yet to complete a permanent building in the UK, and 2013 saw 41-year-old Japanese architect Sou Fujimoto become the youngest to accept the gallery's invitation. Fujimoto created an ethereal structure comprising a lattice of white steel poles that visitors could walk under or sit on top of. ¶ Renowned for producing buildings that encourage unusual forms of interaction, Fujimoto's Tokyo office was also invited to design one of a collection of holiday homes created by famous architects in Spain and unveiled its proposals for an extension to Philip Johnson's 1968 modern art museum in Bielefeld, Germany.

3

Zaha Hadid Architects

It's been another bumper year for Zaha Hadid's London practice. It hit the headlines with its extraordinary organic design for a stadium for the Qatar 2022 FIFA World Cup, while a proposed 80,000-seater stadium for the 2020 Tokyo Olympics was criticised for being too big. The firm also completed a cultural centre in Baku, Azerbaijan, and an extension to the Serpentine Gallery's new building.



The swooping shape of the Heydar Aliyev Centre in Baku is typical of Zaha Hadid Architects' futuristic aesthetic.

4

6a Architects

London practice 6a Architects rose to prominence last year with its designs for a façade covered in decorative cast bronze panels for Paul Smith's boutique in Mayfair, and a timber-clad extension to the London home of architecture critic, Rowan Moore.



6a Architects designed a cast iron façade for Paul Smith's Mayfair boutique.

Thomas Heatherwick

In June, Transport for London awarded British designer Thomas Heatherwick a tender to develop a pedestrian river crossing to connect North and South London. Heatherwick's Garden Bridge proposal is a walkway planted with grass, trees and wild flowers that will create a new green space in the city centre.

Thomas Heatherwick's Garden Bridge will connect London's South Bank with the Strand.



5

51N4E

Belgian studio 51N4E's renovation and expansion of a derelict power plant in the city of Genk won the 2013 edition of the Flemish Heritage Award. It also made the shortlist for the prestigious Mies van der Rohe Award with its BUDA Art Centre in Kortrijk.



Staircases traverse a pentagonal chamber inside the BUDA Art Centre by 51N4E.

Carmody Groarke

Last year saw London studio Carmody Groarke win competitions to design a boat museum on the shores of Lake Windermere in Cumbria and a new exhibition space as part of a renovation of the Royal Horticultural Society's headquarters in London.



Carmody Groarke's recent renovation projects include a new gallery at the RIBA's headquarters.

Caruso St John

London firm Caruso St John has been lauded for its sympathetic renovation of some of the oldest parts of Tate Britain's Millbank building. Education and events rooms can now be accessed via a spiral staircase from the entrance and a café has been installed on the circular balcony inside the domed Rotunda.



The renovation of Tate Britain by Caruso St John was a big hit with our survey.



Architecten De Vylder Vinck Taillieu

Ghent studio Architecten De Vylder Vinck Taillieu is known for its clever, material-driven renovations of vernacular buildings. Its Twiggy clothes store renovation and Rot-Ellen-Berg house, built in the shell of a former inn, were both nominated for the 2013 Mies van der Rohe Award.

The Rot-Ellen-Berg house retains the original masonry walls of the former inn and introduces contrasting modern materials.



David Adjaye aims to give Hackney a shopping destination to rival London's West End.

David Adjaye

David Adjaye, Wall Street Journal Magazine's Architecture Innovator of 2013, presented to a packed audience as one of the keynote speakers at last year's Design Indaba conference in Cape Town, South Africa. He also unveiled plans for a fashion hub in East London and designed a furniture collection for Knoll.

Peter Zumthor

February 2013 saw Swiss architect Peter Zumthor pick up the RIBA Royal Gold Medal for a lifetime's work including the famous Thermal Baths at Vals, Switzerland. It was also announced that he is designing a house in Devon for the Living Architecture initiative.



Peter Zumthor was awarded the RIBA's Royal Gold Medal 2013.

Rogers Stirk Harbour + Partners

The global firm completed 8 Chifley, a 34-storey office tower in Sydney, Australia, which features red crisscrossing braces on its sides and an elevated terrace at its core, while construction of the Leadenhall Building in the City of London is due to be finished this summer.



A five-storey void creates a public plaza at the base of RSHP's 8 Chifley building in Sydney.

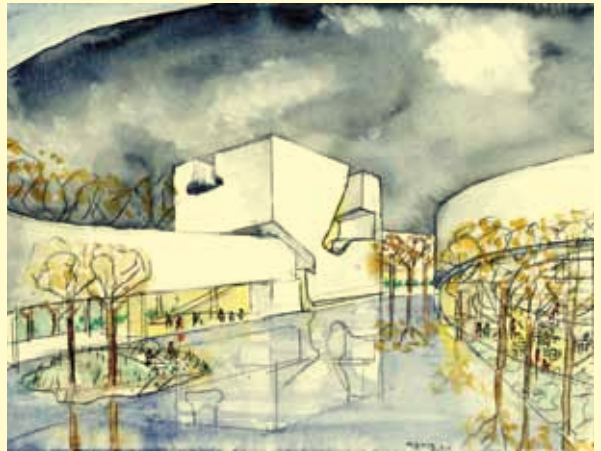


Snøhetta

Award-winning architecture, landscape and interior design firm Snøhetta has been commissioned by the National 9/11 Memorial to create the only building that will sit on the memorial grounds of the World Trade Center site. Currently under construction, the project is expected to be completed later this year.

Snøhetta's museum pavilion at the World Trade Center site.

Steven Holl



New York architect Steven Holl proved his architectural prowess in 2013 by winning a competition to design the new Culture and Art Centre in Qingdao, China. Holl's concept is a series of gallery spaces dedicated to modern, public and classical art, connected by a meandering raised corridor.

Sculpted cubes will house artworks at Steven Holl's Qingdao Culture and Art Centre.

UNStudio

Global architecture firm UNStudio won a competition to design a residential and office complex in Munich, Germany. The Baumkirchen Mitte development will feature a 60-metre tower wrapped in a metal and wood façade.

UNStudio's Baumkirchen Mitte residential and office development will be built in the east of Munich.



Designer / Design Practice

1

Konstantin Grcic



Konstantin Grcic's Medici chair for Mattiazzi won the furniture category at last year's Designs of the Year.

"Konstantin's work is compelling and has an unusual originality and disrespect for what is fashionable, coupled with a curious blend of invention and rigorous process."

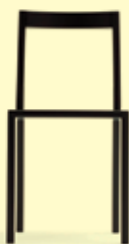
Luke Pearson,
PearsonLloyd

German industrial designer Konstantin Grcic is the man every furniture and lighting brand wants to work with at the moment, as evidenced by his ubiquity and the awards he accumulated in the past year. At the Milan Furniture Fair in April, companies including Magis, Mattiazzi, Emeco and Flos presented new products designed by Grcic, while BD Barcelona launched his Bench B at the IMM Cologne trade fair earlier in the year. ¶ Grcic founded his Munich studio in 1991 and quickly established a reputation for creating simple but intelligent products that make the most of materials and manufacturing processes while consistently challenging existing typologies. One of his standout products from last year was the OK Lamp for Flos, a reinterpretation of Achille Castiglioni's iconic Parentesi lamp, which applies the latest LED light sources to create a flat disc of light that slides up and down a tensile cable. In April, his Medici chair, for Italian brand Mattiazzi, topped the furniture category at the Designs of the Year awards. A wooden lounge chair with an angular frame, it combines the designer's knowledge of traditional joinery with Mattiazzi's modern fabrication methods. Grcic also won prestigious awards for his Palio chair for Plank, Tom & Jerry stools for Magis and Bench B system.

2

Nendo

The Tokyo studio led by Japanese designer Oki Sato had a prolific 2013, completing over 50 projects. As guest of honour at the Stockholm Furniture Fair in February 2013, Nendo devised an installation for the fair's entrance made from sheets of polystyrene that were cut and stretched to create a series of delicate partitions resembling a mountainous landscape. It also collaborated with Italian designer Luca Nichetto on a collection presented at the Milan Furniture Fair and fitted out two shops for footwear brand Camper, by covering walls in white resin replicas of one of its most popular shoes.



The angled back legs of the Heel chair by Nendo

profile resembling a stiletto shoe.

Designer / Design Practice

Ronan and Erwan Bouroullec's Gabriel Chandelier became the first permanent installation at the Palace of Versailles.



Ronan and Erwan Bouroullec

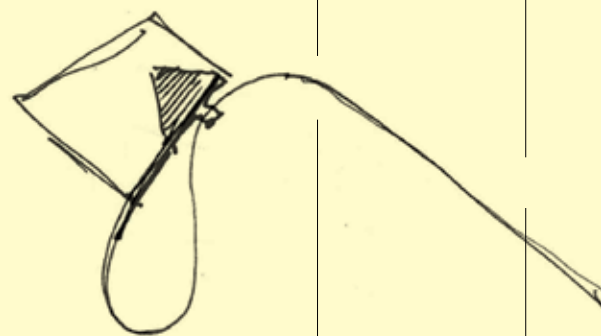
Paris designers Ronan and Erwan Bouroullec turned heads in Milan with their installation for BMW, which featured a group of slowly rotating platforms surrounded by suspended strips of blue fabric that aimed to evoke the quiet motion of the German firm's electric cars. The brothers' Gabriel Chandelier, comprising 800 crystal modules attached to a flexible stainless steel skeleton and illuminated by LED bulbs, became the first permanent piece to be installed in the Palace of Versailles. Italian lighting brand Flos launched the Bouroullecs' Aim lamp, and the pair were the subject of a retrospective exhibition at Paris institution, Les Arts Décoratifs.

Sagmeister & Walsh



The New York City design studio led by Stefan Sagmeister and Jessica Walsh pushes the boundaries of art direction and visual identity design. Last year, its *Happy Show* exhibition, featuring visual and interactive exhibits based on scientific analysis of happiness, attracted record crowds to the Chicago Cultural Center. Walsh's experiment '40 Days of Dating' also grabbed the attention of the public and global press. Tired of the typical dating scene, the designer spent 40 days hanging out with a similarly unattached male friend and posted the outcomes of their serial dates on a daily blog.

The *Happy Show* was Stefan Sagmeister's first museum exhibition in the United States.



The translucent shade of the Rope Trick Light slides along a fabric-covered stem.

Stefan Diez

German designer Stefan Diez unveiled his This That Other collection for German furniture brand e15 at the Milan Furniture Fair last April. The trio of chairs named after a card trick consists of a dining chair, a low lounge chair and a high stool. Diez, who is known for developing innovative responses to everyday problems by experimenting with materials and technologies, also created a lamp for the Wrong for HAY design label's debut collection. The Rope Trick Light features a translucent shade that slides up and down a fabric-covered stem to alter the direction of the light.

Designer / Design Practice



Tokujin Yoshioka's Sparkle stool for Kartell resembles cut crystal.



Tokujin Yoshioka

Last year saw the Museum of Contemporary Art Tokyo host the largest solo exhibition dedicated to the work of Japanese designer, Tokujin Yoshioka. Featuring an array of Yoshioka's pieces that explore the properties of crystal, the main spectacle was provided by the Rainbow Church installation, a 12-metre-high arrangement of crystal prisms that refracted natural light into a kaleidoscopic pattern on the gallery walls. ¶ Yoshioka also created a crystal-inspired stool that was launched by Italian brand Kartell in Milan. The aptly named Sparkle stool is made from clear polycarbonate and resembles cut crystal glass.

3

Barber & Osgerby

Internationally acclaimed designers Edward Barber and Jay Osgerby were both awarded OBEs last year for their services to the design industry. The pair were also invited to curate an exhibition about the materials and methods used to produce everyday objects at London's Design Museum, which opened in January this year. ¶ With their sofa collection for American furniture brand Knoll, Barber and Osgerby aimed to design something that they themselves would want in their home, and the result is a collection that is both soft and architectural.



Cast aluminium feet poke out from the bases of Edward Barber and Jay Osgerby's Sofa Collection for Knoll.

Studio Formafantasma

Studio Formafantasma was established by Italian designers Andrea Trimarchi and Simone Farresin in Eindhoven in 2009, and the pair have since built a reputation for inventive projects that explore craft processes and unusual materials. In 2013, the studio's Botanica



collection of vessels, made from organic matter including insect excrement, wood dust and animal blood, entered the permanent collection of the V&A.

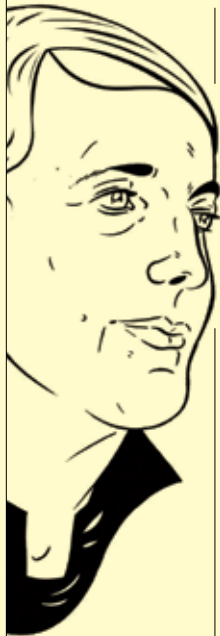
Muller Van Severen

Belgian design duo Fien Muller and Hannes Van Severen create furniture that encourages different ways of living. Their Future Primitives collection, which was nominated for the Design Museum's Designs of the Year 2013, integrates seating, shelving and desktop surfaces to create approachable pieces that are deliberately ambiguous and sculptural.

Studio Formafantasma's Craftica collection combined fashion brand Fendi's leather offcuts with materials including marble and oxidised metal.

Muller Van Severen's Future Primitives furniture is influenced by the duo's artistic backgrounds.





Patricia Urquiola launched several pieces with Moroso in Milan.

Patricia Urquiola

Spanish-born, Milan-based designer Patricia Urquiola continued her allegiance with Italian furniture brand Moroso last year, launching several new pieces with the firm. Encapsulating Urquiola's aptitude for manipulating materials to create practical yet characterful products, the Mafalda armchairs featured curving backs made from rigid felt. Earlier in the year, at the Maison&Objet design fair in Paris, Spanish textile brand Gan presented Urquiola's Lana Mangas collection featuring colourful rugs and pouf-like seats that can be arranged in a variety of configurations.

Paul Cockledge

British designer Paul Cockledge's first solo exhibition took place at Friedman Benda gallery in New York from September to October last year. It



Paul Cockledge's first solo exhibition featured his Poised table.

included a series of robust steel tables designed to resemble delicately curving sheets of paper. At the London Design Festival in September, Cockledge launched a device that turns redundant speakers into portable wireless speakers after successfully raising £100,000 through online crowdfunding. The designer was also commissioned to create a central feature for a new office development in London's Soho.



Thomas Heatherwick appears in both the design and architecture categories of our survey.

Thomas Heatherwick

Thomas Heatherwick has already appeared in this survey's architecture section (see page 4), demonstrating the breadth of his work and the high regard in which he is held within both disciplines. Heatherwick was awarded a CBE for

his services to the design industry in 2013, following several significant recent projects including his cauldron for the 2012 London Olympics, the redesign of the iconic Routemaster bus and an exhibition at London's Victoria and Albert museum that chronicled his career and the output of the studio he founded in 1994.

Yves Béhar

Working at the confluence of industrial design and technology, Yves Béhar's San Francisco design agency Fuseproject unveiled several innovative products in 2013, including a smartphone app that replaces traditional locks, a TV interface controlled by a touchpad remote and a tablet designed to be an easy-to-use learning tool for children. Fuseproject also developed a mini version of its popular Jambox wireless speaker for Jawbone, and launched an office furniture system with American brand Herman Miller.



Yves Béhar's Fuseproject consultancy consistently creates innovative technological products, such as the Jambox wireless speaker for Jawbone (above) and the XO tablet.



Client / Commissioning Body

1

“HAY are entering the market with a massive energy and creating a new space in the market between the premium brands and Ikea.”

Anders Byriel, CEO, Kvadrat

“We love to work with passionate people like Rolf and Mette Hay. They’re the sort of people who phone you in the middle of the night to discuss a micro detail.”

Ronan and Erwan Bouroullec, Designers

“What impressed me most about Caruso St John’s design was how their vocabulary enhanced the late Victorian design of Sidney Smith, removing later accretions and enriching the touch and feel of the building by using traditional materials such as terrazzo, wood and glass in new ways.”

Sir Nicholas Serota, Director, Tate



Rolf and Mette Hay launched a new satellite label called Wrong for HAY with designer Sebastian Wrong.

HAY

Danish design brand HAY was established in 2002 and launched its debut furniture collection at the IMM Cologne trade fair in 2003. Since then, it has challenged the autarchy of the established Italian labels by attracting leading designers such as Louise Campbell, KiBiSi and Scholten & Baijings to develop innovative collaborative projects. With a remit to produce good design at affordable prices, the company, established by designers Rolf and Mette Hay, draws on the heritage of quality Scandinavian design, but is dedicated to supporting new international talent. ¶ Last year marked HAY’s first collaboration with French designers Ronan and Erwan Bouroullec. The brothers designed a furniture collection based on the familiar bentwood chair commonly found in schools and universities, which combines solid wooden legs with moulded plywood surfaces. ¶ At the London Design Festival in September, HAY launched a satellite label in collaboration with British designer Sebastian Wrong. The first collection from Wrong for HAY featured pieces developed in-house, alongside work by emerging designers and well-known names including Stefan Diez and Bertjan Pot.

Tate

The Tate galleries in London, Liverpool and St Ives have always employed the best international architects to create buildings that contribute to the visual and economic landscape of their local communities. Last year saw London architects Caruso St John complete the first stage of an update to the oldest site at London’s Millbank. ¶



The renovation of Tate Britain by Caruso St John features a stunning Art Deco-influenced staircase.

The architects carried out a series of restorations on the southern part of the original building, which dates from 1897, and added a dramatic spiral staircase from the entrance down to the basement. Their interventions were greeted with widespread critical acclaim and mark the first stage in a development process that will continue over the next 20 years. Meanwhile, Herzog & de Meuron's extension of its Tate Modern gallery on London's South Bank is scheduled for completion in 2016, as is an extension to Tate St Ives by Jamie Fobert Architects.

A new extension to Tate St Ives by Jamie Fobert Architects includes galleries sunk into the hillside with a public terrace on the roof.



2

Google

As one of the world's leading technology firms, promoting design and innovation is key to Google's business model. As well as the core team of engineers who keep its ubiquitous search engine firing on all cylinders, Google regularly employs graphic designers to manage its visual identity and create its famous Google doodles. Last year saw Google make a bold foray into the realm of industrial design with the Google Glass concept for a wearable computer with a heads-up display. Its Google X research lab took the idea of wearable technology a step further with a proposal for contact lenses that could monitor the glucose levels of diabetes sufferers. Google also works with leading architects and interior designers on its global offices and unveiled plans for a vast new campus in San Francisco designed by NBBJ, a London headquarters by AHMM and quirky new interiors in Tel Aviv, Madrid, Dublin and Tokyo.

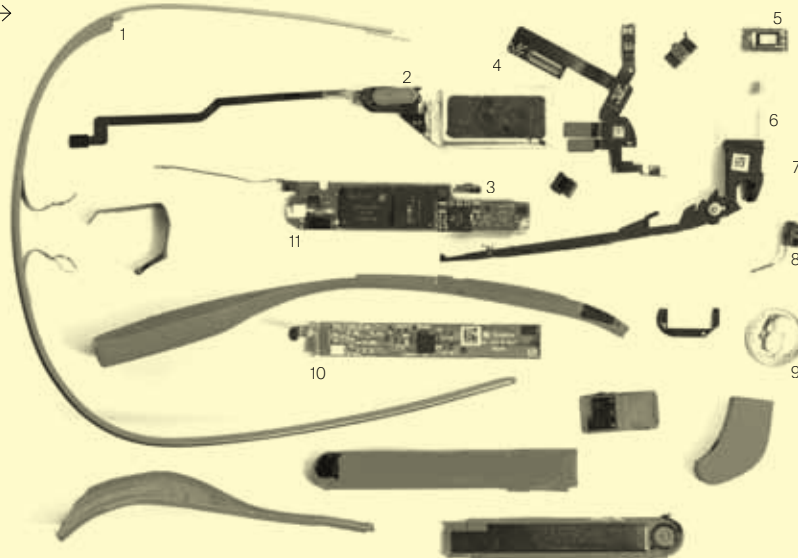
Google

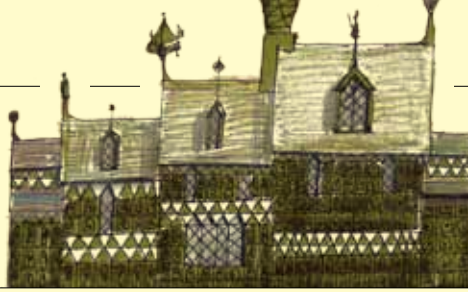


From top: Brazilian designer Ruth Kedar based Google's new logo on the Catull typeface. Google Glass eyewear. The company commissioned AHMM to design its new London headquarters.

Google Glass headset components

- 1 Frame
- 2 Speaker
- 3 Battery
- 4 Display Flex PCB
- 5 Display
- 6-7 Optics
- 8 Camera
- 9 US Dime
- 10 Touchpad
- 11 Logic Board





Architects FAT collaborated with artist Grayson Perry on the whimsical design of A House for Essex.

3

Audi

Automotive brand Audi operates an independent charity to promote design called the Audi Design Foundation, as well as working closely with designers on its presentations at international motor shows and other events. Its stand at last year's edition of the IAA motor show in Frankfurt featured a spectacular animated LED chandelier by London-based designer Moritz Waldemeyer.



Moritz Waldemeyer's Downtown Supernova chandelier illuminated Audi's stand at the 2013 IAA motor show.

Living Architecture

Living Architecture is a social enterprise that commissions celebrated architects to design contemporary houses for UK holiday rentals. It is currently working with London architecture office FAT and artist Grayson Perry to build a unique property in Essex that evokes a history of fairytales and follies, while houses designed by Peter Zumthor and John Pawson are scheduled for completion in 2015.

London School of Economics



LSE's new social sciences centre has been designed by Rogers Stirk Harbour + Partners.

Last year the London School of Economics announced that Rogers Stirk Harbour + Partners had won a competition to build a new £90 million centre for social sciences at its Bloomsbury campus. "RSHP grasped that this would be a building at once for the university and for the city, an enhancement to public as well as academic space," explained LSE director, Professor Craig Calhoun.



Derwent London's collaborations with leading architects include the Angel Building by AHMM.

Derwent London

Property development group Derwent London consistently collaborates with top architects to regenerate office buildings across the capital. Among several projects currently under development is a mixed-use scheme on Oxford Street designed by AHMM, the architects behind the group's award-winning Angel Building.

Flos

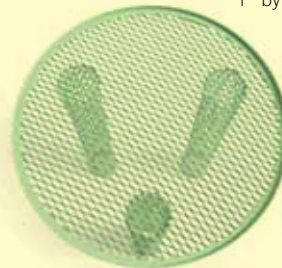
Italian lighting brand Flos impressed the industry at Euroluca during Milan Design Week with an intriguing collection of new products by designers including Konstantin Grcic, Ron Gilad and Philippe Starck. Its first collaboration with Cypriot designer Michael Anastassiades produced the String Lights, a range of spherical and conical pendants hung from black electrical cords.

Flos CEO Piero Gandini worked with designers including Michael Anastassiades and Ron Gilad last year.



Moroso

The Italian design brand headed by Patrizia Moroso consistently commissions the world's leading designers to create cutting-edge furniture, and last year saw it launch pieces by Benjamin Hubert, Patricia Urquiola, Nendo, Werner Aisslinger and Raw Edges, among others.



Benjamin Hubert's expanded steel mesh Net table was one of several products launched by Moroso in April.

Serpentine Gallery

As well as the commission of the annual Serpentine Pavilion – designed this year by Sou Fujimoto (see page 3) – London's Serpentine Gallery expanded into a nearby 19th century gunpowder store. Zaha Hadid Architects renovated the existing brick building and added an extension that features a swooping tensile fabric roof.

The fluid shape of the new Serpentine Gallery extension contrasts with the existing brick building.



Client / Commissioning Body

Transport for London invests heavily in architecture, infrastructure and transportation design.

Transport for London

TfL manages the British capital's transport infrastructure and often goes the extra mile to commission quality architecture and design, such as Thomas Heatherwick's redesign of the classic Routemaster bus. Our survey participants also nominated TfL for some of its less conspicuous projects, including the upgrade of bus stops, stations and major transport interchanges.



V&A

As the hub of the annual London Design Festival, the V&A museum again hosted a range of specially commissioned



Wind Portal by Najla El Zein was installed at the V&A for the London Design Festival.

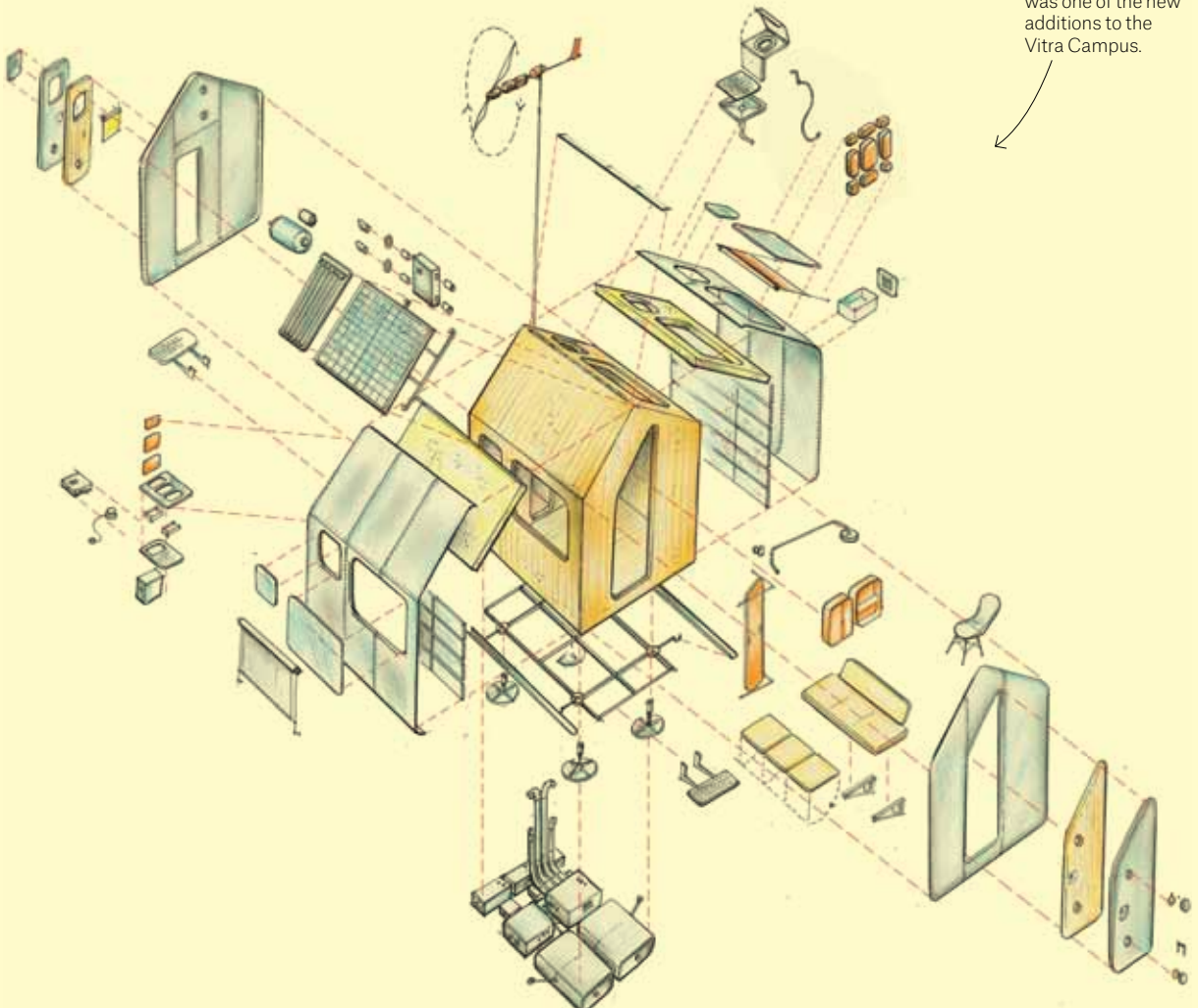
installations. Canadian lighting brand Bocci lit up the museum's entrance with a giant chandelier of colourful glass spheres and Lebanese designer Najla El Zein filled a doorway with 5000 spinning paper windmills.

Vitra

As well as launching new products by Ronan and Erwan Bouroullec and Hella Jongerius in Milan, 2013 saw Swiss design firm Vitra add several new buildings to its manufacturing and museum campus in Weil am Rhein, including a factory by SANAA and a small wooden cabin by Renzo Piano. It also acquired Finnish furniture brand Artek, which is famous for producing Alvar Aalto's classic designs.



Renzo Piano's tiny Diogene living unit was one of the new additions to the Vitra Campus.





Architect / Architectural Practice

00./
 Adamo-Faiden
 Al Borde Arquitectos
 Alison Brooks
 Andra Matin
 Andrade Morettin Arquitetos
 Annabelle Selldorf
 Antonino Cardillo
 Architecture Studio
 Asif Khan
 BozarthFornell Architects
 BWArchitects
 Christian Kerez
 David Chipperfield Architects
 Eric Owen Moss Architects
 FAT Architecture
 Feilden Clegg Bradley Studios
 Frank Gehry
 Gigon / Guyer Architekten
 Gollifer Langston Architects
 GRAS (Groves-Raines Architects Studio)
 H Arquitectes
 Hawkins\Brown
 Haworth Tompkins
 Johnston Marklee
 Juhani Pallasmaa
 Jun Igarashi
 LEAD (Laboratory for Explorative
 Architecture and Design LTD)
 LOT-EK
 M.A.R.U. Network (Metropolitan
 Architecture Research Unit)
 MA Style Architects
 Made in Sàrl
 MASS Design Group
 Mass Studios
 Micheletti + Partners
 Michael Maltzan Architecture
 Morphosis Architects
 Niall McLaughlin Architects
 NLÉ
 NORM.Architects
 Pezo Von Ellrichshausen
 Robbrecht & Daem
 Shigeru Ban Architects
 Stanton Williams Architects
 Studio Egret West
 Studio Weave
 SUH Architects
 Tatiana Bilbao
 Toyo Ito & Associates
 Vincent Van Duysen Architects
 Wang Shu

Designer / Design Practice

2x4
 AeroVelo
 Alabama Chanin
 Apple
 Atelier Domino
 Atelier Marko Brajovic
 BassamFellows
 BMW Design
 Brian Eno
 Bruce Mau
 Carl de Smet
 Dan Pearson Studio
 DESIS Lab, The New School
 Doshi Levien
 Doug Aitken
 Dries Van Noten
 El Ultimo Grito
 Faye Toogood
 François Azambourg
 Fraser Muggeridge Studio
 Guillaume Delvigne

Hayon Studio
 Heath Ceramics
 Hella Jongerius
 Industrial Facility
 Inga Sempé
 Jacopo Foggini
 Jasper Morrison
 Kia Motors
 KiBiSi
 LCLA (Luis Callejas)
 MAP Projects
 Martino Gamper
 Maurizio Cattelan
 Max Lamb
 Michael Anastassiades
 Michaël Verheyden
 Minä Perhonen
 Neri Oxman
 Nika Zupanc
 OFFICE (Kersten Geers and
 David Van Severen)
 Patrick Blanc
 Paul Smith
 Petra Blaisse
 Philippe Malouin
 POOL
 Priestmangoode
 Rafael de Cárdenas
 Realise Creative
 Ron Gilad
 Ross Lovegrove
 ROTOR
 Selgas Cano Architects
 Sevil Peach
 Simon Heijdens
 Simon Pengelly
 Snarkitecture
 Something Fantastic
 Studio Myerscough
 Studio Roosegaarde
 Tobias Rehberger
 Tom Dixon
 Van Bo Le-Mentzel
 Vincenzo De Cottis Architects
 Vitamins
 Wonmin Park

Client / Commissioning Body & Tradition

Acne Studios
 Amanda Burden (Director of the New York
 City Planning Department)
 Apple
 Artek
 Arumjigi
 Axel Springer SE
 BBC
 Behar Male (Director of Banka Societe
 Generale Albania)
 Benesse Art Site Naoshima
 Biennale Interieur
 China
 China Vanke
 Credit Suisse Group AG
 Clinton Global Initiative
 Design Museum London
 Dia Art Foundation
 Discipline
 Dries Van Noten
 Edi Rama (Prime Minister of Albania)
 Fabrica
 Friends of The High Line
 Gerald D. Hines
 Hermès
 James B Hunt - Former governor of
 North Carolina
 Julie Vandenbroucke and Michel Espeel

Kenzo
 Kingdom of Saudi Arabia
 La Rinascente
 LACMA (Los Angeles County
 Museum of Art)
 LLDC (London Legacy Development
 Commission)
 Maggie's Cancer Caring Centres
 March, San Francisco
 MAK Vienna (Museum of Applied Arts)
 Marina Abramovic Institute
 Michael Bloomberg
 Menu
 Mikheil Saakashvili (Former President
 of Georgia)
 Missoni
 Muuto
 Naomi Campbell and Vladislav Doronin
 National Trust
 Nike
 Parasol unit foundation for contemporary art
 Prada
 PragueKabinet
 MoMA PS1
 Regula Lüscher
 Robert Wennett
 RSA (Royal Society for the encouragement
 of Arts, Manufactures and Commerce)
 Saint Laurent
 SESC Sao Paulo
 Sheikha Mozah bint Nasser (Qatar
 Foundation)
 Shaikha Mai Al Khalifa (Bahrain Minister of
 Culture)
 Skid Row Housing Trust
 Soho House Group
 Spotti Milano
 Taichung City Government, Taiwan
 TDIC (Tourism Development & Investment
 Company Abu Dhabi)
 The Crown Estate
 The Menil Collection
 The Republic of Azerbaijan Government
 The Sorrell Foundation
 Trumpf GmbH
 UCL (University College London)
 Vionnet
 Wallpaper Magazine/Handmade
 West Kowloon Cultural District Authority
 Zeev Aram

Image Credits

Portrait illustrations
 by Alexander Wells

| | | |
|---|---|---|
| 6a Architects - Paul Smith 51N4E: 51N4E / Piovone Fabi Architecten De Vylder Vinck Taillieu: Filip Dujardin BIG - BIG Bjarke Ingels Group Caruso St John - Hélène Binet David Adjaye: Manhattan Loft Corporation and Chatham Works OMA - courtesy of OMA Rogers Stirk Harbour + Partners - Brett Boardman Sou Fujimoto - Sou Fujimoto Architects Thomas Heatherwick - Arup UN Studio - UNStudio | Snohetta: National 9/11 Memorial & Museum Zaha Hadid - Zaha Hadid Architects Steven Holl - Steven Holl Architects Nendo - Nendo/ Hiroshi Iwasaki Ronan and Erwan Bouroullec - Studio Bouroullec Sagmeister & Walsh: Stefan Sagmeister and Jessica Walsh Stefan Diez: SDO / Jonathan Mauloubie Barber & Osgerby: Barber & Osgerby and Knoll Paul Cockledge: Mark Cockledge FormaFantasma: Luisa Zanzani Muller Van Severen: Fien Muller Audi: courtesy of Moritz Waldemeyer | Derwent - courtesy of AHMM Google: www. catwig.com/ google-glass- teardown/Scott Torborg and Star Simpson: Building images by AHMM Tate Britain - courtesy of Caruso St John Tate St Ives: courtesy of Jamie Fobert Architects LSE: courtesy of Rogers Stirk Harbour + Partners Serpentine Sackler Gallery: Luke Hayes 2013 TFL: Transport for London Press V&A: courtesy of London Design Festival Vitru: Jointly developed by Renzo Piano and Vitra |
|---|---|---|