



**WARNING • KEEP OUT OF REACH OF CHILDREN**  
Ecotoxic.



**Key Industries**

Protecting people, crops and native species

# Strike Out™ Insecticide

with Zeta-Sized™ Technology

## GENERAL INFORMATION

A residual insecticide for the control of ants, cockroaches, fleas, flies, mosquitoes and spiders in domestic, industrial and public health areas.

## ACTIVE INGREDIENT

Contains 200g/litre cypermethrin in the form of an oil in water emulsion.

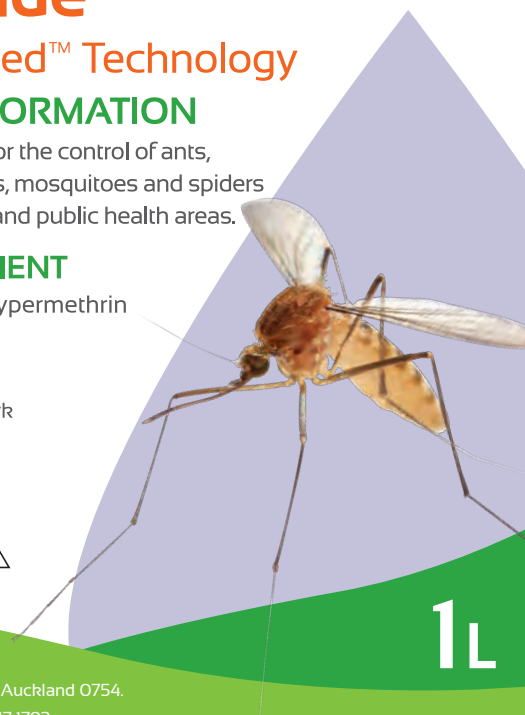
Strike Out™ is a trademark of Key Industries Ltd



Distributed by  
**Key Industries Ltd**  
15D Paul Matthews Road  
PO Box 65-070, Mairangi Bay, Auckland 0754.

Tel 0800 539 463 Fax 09 917 1793

Web [www.keyindustries.co.nz](http://www.keyindustries.co.nz) Email [sales@keyindustries.co.nz](mailto:sales@keyindustries.co.nz)



**1L**

# Strike Out™

PEEL HERE

**Read label before use. Do not handle until all safety precautions have been read and understood.**

**HAZARD CLASSIFICATIONS:** 6.1D, 6.3B, 6.4A, 6.5B, 6.8B, 6.9A, 9.1A, 9.3C, 9.4A



## APPROVED HANDLER:

This product must be secured or under the personal control of an approved handler when:

- applied in a wide dispersive manner; or
- used by a commercial contractor

## RECORD KEEPING

A person in charge of this substance must ensure that a written record is kept of each application or discharge of the substance if more than 200 ml is applied or discharged within 24 hours in a place where—

- members of the public may lawfully be present; or
- the substance is likely to enter air or water and leave the place.

**TOXICITY WARNING:** THIS SUBSTANCE MAY BE HARMFUL IF SWALLOWED. Repeated minor exposures may have cumulative effects. Do not inhale the vapour or spray mist. Do not eat, drink or smoke while using. Remove protective clothing immediately after handling this product and wash hands and face before meals and after work. Wash contaminated clothing before reuse. SUSPECTED OF DAMAGING FERTILITY from repeated oral exposure. MAY CAUSE ORGAN DAMAGE from repeated oral exposure at high doses.

MAY CAUSE MILD SKIN AND SERIOUS EYE IRRITATION. Avoid contact with eyes and skin. Facial skin contact may cause temporary facial numbness

MAY CAUSE AN ALLERGIC SKIN REACTION THROUGH PROLONGED OR REPEATED CONTACT

## ECOTOXICITY:

VERY TOXIC TO AQUATIC ORGANISMS WITH LONG LASTING EFFECTS. DO NOT contaminate any water supply with chemical or empty container. DO NOT spray over or allow to drift over an aquatic environment.

HARMFUL TO TERRESTRIAL VERTEBRATES SUCH AS BIRDS AND REPTILES.

VERY TOXIC TO TERRESTRIAL INVERTEBRATES. Do not spray over bees or apply to plants in flower. Do not spray over beneficial predators.

## HANDLING PRECAUTIONS

**STORAGE:** Store in the original container tightly closed and in a locked, dry, cool and well ventilated area – well away from ignition sources and foodstuffs. Storage must be generally in accordance with NZS8409.

## PERSONAL PROTECTION

When mixing or applying, wear eye protection, face protection, chemical resistant gloves (e.g. nitrile), chemical resistant boots, waterproof hat and chemically resistant overalls buttoned to the neck and wrist.

## DISPOSAL

Triple rinse empty container and add rinsate to spray tank. Do not burn empty container that has not been rinsed. Recycle triple rinsed containers through an approved recovery scheme, eg Agrecovery. Otherwise, crush or puncture and bury in a suitably approved landfill. Dispose of this product only by using according to the label, with an approved waste disposal company or treat so that it is no longer hazardous and then dispose of safely in a managed landfill. Do not burn the product.

Dispose of equipment cleaning water onto ground away from susceptible crops and plants.

## SPILLAGE

Exclude all bystanders, prevent material entering waterways and

coming into contact with other products. Wear appropriate protective clothing to clean up spills. Absorb spills with an inert (such as vermiculite, earth, sand or synthetic absorbent substance) material and place in waste containers. Wash area with a bleach solution (sodium hypochlorite) then absorb any remaining liquid with further inert material. Dispose of waste with an approved waste disposal company.

## FIRST AID

If medical advice is needed, have product container or label at hand. If swallowed do not induce vomiting. For advice contact the National Poisons Centre 0800 POISON (0800 764 766) or a doctor immediately. If splashed in eyes, remove contact lenses if present and easy to do, flush eyes with water for at least 15 minutes and see a doctor. If inhaled, move victim to fresh air immediately. If breathing has stopped, begin artificial respiration. Use mouth-to-nose rather than mouth-to-mouth. If skin or hair contact occurs, remove contaminated clothing and flush skin and hair with running water and soap.

## NOTICE

**Important:** You must read the warning and conditions given on this label. If they are not acceptable, or if you are in doubt as to the proper handling of this product (including its transport, storage, use, disposal, and requirements for approved handlers) then return the unopened product to the supplier at once.

**Warning:** This product is subject to controls and could be hazardous if handled incorrectly. The user is responsible for ensuring that the handling of this product is in accordance with the law (including the **Hazardous Substances and New Organisms Act 1996**) and with the directions provided. Key Industries Limited declines all liability whether in contract, tort (including but not limited to negligence), (or otherwise), to the maximum extent permitted by law in relation to the handling of this product in a manner which is contrary to the directions given or to any applicable Acts, Regulations or Guidelines.

**Further information** regarding the applicable Acts, Regulations and Guidelines for the proper handling of this product may be obtained by contacting EPA New Zealand ([www.epa.govt.nz](http://www.epa.govt.nz)).

This product is warranted to contain the specified active ingredient within accepted analytical tolerance when packed.

NZFSA Approved type B (all animal products except dairy) AssureQuality approved Category B & C Food/beverage/dairy factory and storage areas (Category B & C point apply)

**HSNO Approval Code:** HSR100346

**UN Number:** UN3082, Environmentally Hazardous Substance, Liquid, NOS

**Packing Group:** III



**AGRECOVERY**

[www.agrecovery.co.nz](http://www.agrecovery.co.nz)



## DIRECTIONS FOR USE

Situations	Insect Pests	Rates	Critical Comments
Houses, flats, factories, shops, warehouses, restaurants, meat and dairy processing plants.	ants, cockroaches, fleas, flies, mosquitoes and spiders.	50ml per 100m <sup>2</sup> in up to 5 litres of water	Apply as a fine spray at 50mls per 100 square metres with up to 5 litres of water or to the point of run-off. NOTE: the water rate will vary depending on the surface that you treat, eg porous or non porous. The correct use rate of Strike Out per square metre is critically important for performance. Strike Out can be applied with a knapsack sprayer or other conventional spray equipment used to control public health pests, eg B&G 2600 or Hurricane Ultra Mister. If lower water rates or if conventional misting equipment is used, the dilution rate should be adjusted so that 50 ml Strike Out is applied per 100 square metres.
Thermal fogging warehouses and silos. Limited residual control	Flying insects and crawling insects in harbourages	Apply 50-100ml Strike Out per 1000 cubic metres with a suitable fogging agent	Mix Strike Out at a rate of 100 ml in 100-200 ml of Fog-It fogging agent. Water may be partly substituted for fogging agent if a wetter fog is desired. Apply 200-300mls of diluted product per 1000 cubic metres.

Residual control for up to 6 weeks may be obtained, depending on the insect pest, application rate and the nature of the treated surface.

Surface spray only - do not spray into the air.

### Where to apply:

**Ants** - nests, runs, walls, drains and resting places wherever ants are seen.

**Cockroaches** - walls, skirting boards, cupboards, behind sinks, stoves and pipes. In particular, cracks and crevices.

**Fleas** - floors, carpets, skirting boards, kennels, bedding and adjacent wall area.

**Flies and Mosquitoes** - walls, skirting boards and all exposed surfaces where these flying insects may rest.

**Spiders** - nests and known hiding places, and exposed surfaces where spiders are seen.

### Important - Food contamination

- Do not allow spray to contact food, food preparation surfaces or food utensils.
- Remove or cover all foodstuffs before application.
- Do not use in areas where edible dairy or meat products are processed, packed or stored.
- Do not use where food-packaging materials (cartons, liners etc) are stored or assembled.
- Do not use near air vents or ducts in food stores or processing plants while they are in operation.
- Wash all food contact surfaces thoroughly before reintroducing any foodstuffs.