



San José State

WOMEN'S BASKETBALL

Athletics Media Relations Department
 Contact: Connor Pelton
 office: 408-924-1229 cell: 503-998-7686
 email: connor.pelton@sjsu.edu
 website: www.sjsuspartans.com

UNLV Lady Rebels at San Jose State Spartans

Wednesday, January 15, 2019 - 7:00 p.m. - San Jose, Calif. (Provident Credit Union Event Center - 5,000)



San José State 11-6 (5-1 MW)
Last Game W, 58-53 at Colorado State
Head Coach Jamie Craighead



UNLV 8-8 (4-1 MW)
Last Game W, 65-53 vs. Wyoming
Head Coach Kathy Olivier

2019-20 Individual Leaders

Points Per Game.....Ayzhiana Basallo (20.8)
Rebounds Per Game.....Tyra Whitehead (10.1)
Assists.....Ayzhiana Basallo (80)
Steals.....Tyra Whitehead (43)
Blocks.....Cydni Lewis (13)

Broadcast Information

Video: Mountain West Network
On The Call: Daniel Barrera
Live Stats: www.SJSUSpartans.com

@SanJoseStateWBB

2019-20 Team Stat Comparison

San Jose State	UNLV
78.6.....	Points/Game..... 60.9
72.7.....	Points Allowed/Game..... 59.8
36.5.....	Rebounds/Game..... 39.1
.418.....	FG Percentage..... .376
.767.....	FT Percentage..... .701
.372.....	3-PT FG Percentage..... .262
54.....	Blocks..... 31
202.....	Steals..... 149
304.....	Assists..... 186
261.....	Turnovers..... 265

Series History

ALL-TIME RECORD: 6-33
Current Win Streak: UNLV - W5
Last San José State Win: 76-65, January 28, 2017
Last UNLV Win: 74-70, February 16, 2019
San José State at Home: 4-15
San José State at UNLV: 2-16
Neutral: 0-2

Last Meeting: Megan Anderson paced the Spartans with 16 points but UNLV was able to escape with a 74-70 victory at Cox Pavilion.

Possible Starters

No.	Name	Pos.	Ht.	Yr.	Hometown	2019-20 Statistics	Notes
0	Raziya Potter	G	6-0	So.	Tracy, Calif.	10.2 ppg, 3.2 apg.	Had career-high 19 points at Colorado State
3	Ayzhiana Basallo	G	5-5	So.	San Francisco, Calif.	20.8 ppg, 5.3 apg.	Leads MW in scoring and free throw %
4	Fieme'a Hafoka	G	5-9	Sr.	Kihei, Hawaii	9.4 ppg, 4.9 rpg.	Had game-winning field goal at Nevada
15	Tyra Whitehead	F	6-3	Jr.	Richmond, Va.	13.7 ppg, 10.1 rpg.	Has seven double-doubles on the season
30	Megan Anderson	G	6-0	Jr.	Fresno, Calif.	8.8 ppg, 2.9 rpg.	Made six three-pointers in win at UNM

Off The Bench

No.	Name	Pos.	Ht.	Yr.	Hometown	2019-20 Statistics	Notes
13	Kalina Obrey	G/F	5-10	Fr.	Honolulu, Hawaii	1.3 ppg, 0.7 rpg.	One of two true freshmen on the team
22	Danae Marquez	G	5-5	Jr.	Fresno, Calif.	8.5 ppg, 3.8 apg.	Had 14 points and 4 steals in win at UNM
23	Miyah Lewis-Hampton	F	5-11	Fr.	San Francisco, Calif.	1.2 ppg, 1.3 rpg.	Had 5 points and 5 rebounds in La Verne win
24	Alexis Harris	C	6-3	Sr.	Palo Alto, Calif.	0.9 rpg, 0.1 bpg.	Grabbed 5 rebounds in 9 minutes vs. EWU
33	Courtesy Clark	G	5-10	Jr.	Sacramento, Calif.	1.9 ppg, 2.6 rpg.	Had 14 points and 8 steals in La Verne win
35	Cydni Lewis	F	6-0	Jr.	Long Beach, Calif.	6.4 ppg, 4.1 rpg.	Named SJSU Athlete of the Month for Dec.

Schedule/Results

11-6, 5-1 MW

November

5	at UC Irvine	L, 79-77
8	Eastern Washington	W, 84-66
12	at Santa Clara	L, 89-81
15	at UC Santa Barbara	W, 73-70
17	Sacramento State	W, 73-67
21	Buffalo	W, 95-88
23	San Diego	W, 88-82
29	at CSU Bakersfield	L, 75-71

December

4	at Utah State*	W, 76-61
7	San Diego State*	W, 84-67
14	La Verne	W, 128-62
18	vs. BYU#	L, 75-56
19	vs. Northern Arizona#	L, 67-64

January

1	at New Mexico*	W, 81-80
4	Fresno State*	L, 85-76 (OT)
8	at Nevada*	W, 72-70 (OT)
11	at Colorado State*	W, 58-53
15	UNLV*	7:00 p.m.
22	New Mexico*	11:00 a.m.
25	at Air Force*	2:00 p.m.
29	Boise State*	7:00 p.m.

February

1	at Wyoming*	1:00 p.m.
8	Nevada*	2:00 p.m.
12	at Fresno State*	6:00 p.m.
15	Air Force*	2:00 p.m.
19	at Boise State*	7:00 p.m.
22	Colorado State*	2:00 p.m.
24	Utah State*	7:00 p.m.
27	at UNLV*	6:00 p.m.

Mountain West Tournament

1-4 TBD Las Vegas, Nev.

All times local to the site

Home Games In **Bold**

* - Mountain West Game

- Maui Jim Maui Classic in Lahaina, Hawaii



UNDERSTANDING UNLV

Wednesday's meeting will serve as the 17th game of the season for UNLV. The team currently owns an 8-8 record and has won five straight games. The Lady Rebels are off to a 4-1 start to Mountain West play this season and sit just a half game back of San José State in the conference standings.

It's senior Rodjanae Wade who paces the UNLV offense with an average of 14.3 points per game. Wade also tops the team on the glass, pulling down an average of 9.8 rebounds per game.

The Lady Rebels are 3-3 on the road this season and have won two straight away from home, taking down both Utah State (60-46) and Air Force (67-60).

SJSU VS. THE MOUNTAIN WEST

Overall, San José State is 116-221 against the current make up of schools in the Mountain West. The Spartans enter having won nine of their last 12 conference games, the most recent victory coming at Colorado State on Saturday.

Sophomore **Ayzhiana Basallo** led her team in the 58-53 victory at Moby Arena, tallying 26 points in the winning effort. After Wednesday's tilt, San José State's next Mountain West game will come back at home against New Mexico on Jan. 22.

ROAD WARRIORS (OR SPARTANS)

San José State has won its first four road games of conference play for the first time since the 1978-79 campaign, when the Spartans won at San Francisco, Santa Clara, Stanford and Fresno State in NorPac action. Its four-game road winning streak is tied for the 14th longest in Division I and is the best in the Mountain West.

SJSU already has five road wins on the 2019-20 campaign. The program has not had a season with more than five road victories since winning eight in the 2004-05 season. Finally, last week's wins at Nevada and Colorado State marked the program's first road sweep since the 2015-16 campaign (won at Air Force and Fresno State).

IT'S BEEN A WHILE

San José State is off to a 5-1 start to conference play, marking the program's best six-game start to conference play in 38 years. The 1981-82 Spartans opened that league season with a 5-1 mark in NorPac action.

CALL IT A COMEBACK

The Spartans now own six victories on the year after trailing at halftime: *at UC Santa Barbara* (down four at half, win by three); *Buffalo* (down seven, win by seven); *San Diego* (down seven, win by six); *at New Mexico* (down 10, win by one); *at Nevada* (down six, win by two); *at Colorado State* (down nine, win by five).

BASALLO BREAKDOWN

Sophomore **Ayzhiana Basallo** is playing as well as any guard in the country, ranking 10th nationally in points per game (20.8) and No. 23 in assists with 5.3 per game. Basallo currently has an assist on 34% of her teammates' baskets while on the floor. She is also one of the nation's top free throw shooters, slotted fifth in Division I with a 92.3% clip at the charity stripe.

Basallo is one of just two players nationally averaging 20+ points and 5+ assists per game. She has scored in double figures in each of her 14 games against Division I opponents and has reached the 20-point plateau in nine of those.

AYZHIANA'S AWARDS

Sophomore **Ayzhiana Basallo** has already garnered five weekly awards this season. The guard was named the College Sports Madness High-Major Player of the Week (and Mountain West Player of the Week, her second of the year from CSM) back on Dec. 9 after leading her team to a pair of victories to tip-off conference play. Basallo had previously earned back-to-back Mountain West Player of the Week awards from the conference office in November.

2019-20 Miscellaneous Stats

Double-Figure Scoring Games (61)

Megan Anderson (6), Ayzhiana Basallo (14), Courtesy Clark (1)
Fieme'a Hafoka (7), Cydni Lewis (4), Danae Marquez (7),
Raziya Potter (9), Tyra Whitehead (13)

Double-Figure Rebounding Games (9)

Raziya Potter (1), Tyra Whitehead (8)

Double-Doubles (12)

Ayzhiana Basallo (2), Danae Marquez (1), Raziya Potter (2),
Tyra Whitehead (7)

Led Team In Scoring

Megan Anderson (2), Ayzhiana Basallo (8), Cydni Lewis (1),
Danae Marquez (2), Tyra Whitehead (4)

Mountain West Standings (As of 1/13)

	MW Games			All Games		
	W	L	PCT.	W	L	PCT.
Fresno State	5	0	1.000	12	4	.750
San Jose State	5	1	.833	11	6	.647
UNLV	4	1	.800	8	8	.500
Boise State	4	2	.667	12	6	.667
Wyoming	3	3	.500	7	8	.467
San Diego State	3	3	.500	8	10	.444
Colorado State	2	3	.400	8	8	.500
Air Force	2	3	.400	4	12	.250
New Mexico	1	4	.200	10	8	.556
Nevada	1	4	.200	8	8	.500
Utah State	0	6	.000	5	12	.294

SJSU 2019-20 Record When

Playing at home (6-1)
Playing on the road (5-3)
Playing at night (6-3)
Playing in the afternoon (5-3)
Leading at halftime (5-1)
Leading at end of 3rd quarter (10-2)
Scoring more points than their opponent (11-0)

AN SJSU WIN WOULD

- > Give the program its best seven-game start to conference play since 1978-79 (went 12-0 overall in NorCal play)
- > Improve record to 7-1 at home this season
- > Be better than a loss

Pronunciation Guide

AYZHIANA BASALLO (AYE-zhee-ON-ah BUS-all-OH)

ANALYSS BENALLY (anna-LEASE ben-OLLIE)

FIEME'A HAFOKA (FEE-aye-meh-ah HA-foe-ka)

CYDNI Lewis (Sydney, like the city in Australia)

MIYAH Lewis-Hampton (MY-ah)

DANAE Marquez (dah-NAY)

SHAILA Mays (SHY-luh)

KALINA Obrey (CUH-lean-UH)

RAZIYA Potter (rah-ZEE-ah)

CARLOTTA KLOPPENBURG (CAR-lot-UH KLOPP-in-BERG)

ALLE Moreno (AL-ee)



Quick Facts

Location San Jose, Calif.
 Enrollment 32,828
 Founded 1857
 Conference Mountain West
 Nickname Spartans
 Colors Gold, White & Blue
 President Mary A. Papazian
 Director of Athletics Marie Tuite
 WBB Administrator Steve O'Brien

Coaching Staff

Head Coach Jamie Craighead
 Oregon, 2002 (seventh year)
 Career Record (entering 2019-20) 115-191, 10 seasons
 Record at SJSU (entering 2019-20) 64-121, six seasons
 Assistant Coaches Alle Moreno (Sacramento State, 2014)
 Carlotta Kloppenburg (Point Loma, 2014)
 Arielle Wideman (Nevada, 2014)
 Director of Operations Carolyn Ruffino (UC Santa Barbara, 2018)
 Women's Basketball Office Phone 408-924-1659

Team Information

2018-19 Overall/MW Record/Finish 6-24/5-13/9th
 Letterwinners (Returning/Lost) 8/3
 Starters (Returning/Lost) 4/1
 Newcomers 6

Communication

Asst. Media Relations Director/WBB Contact Connor Pelton
 E-Mail connor.pelton@sjsu.edu
 Office Phone 408-924-1229
 Cell Phone 503-998-7686
 Website sjsuspartans.com

Facility

Home Court Provident Credit Union Event Center (5,000)
 Press Table Phone 408-924-6470

20/20 CLUB

Grad transfer **Tyra Whitehead** became just the second player in program history to join the 20/20 Club on Jan. 4, tallying 22 points and 20 rebounds against Fresno State. Whitehead was just the 13th player in all of Division I to accomplish the feat this season and is the first to do so at San José State since Lora Alexander poured in 27 points and grabbed 20 rebounds against UC Santa Barbara on February 23, 1989.

MORE WHITEHEAD

Forward **Tyra Whitehead** has been producing all year in her first season on-campus at San José State. The Wake Forest transfer ranks No. 12 in all of Division I and is first in the Mountain West with 172 rebounds. Her seven double-doubles on the season slots her at second in the conference and 27th nationally in that category.

ACTUALLY, STEALING IS GOOD

San José State is ranked No. 6 nationally with 202 steals in 17 games. Forward **Tyra Whitehead** is slotted 24th in the country in that category with 43 thievery on the year. **Fieme'a Hafoka** (30 steals) and **Cyndi Lewis** (26) are also stealing the ball at a high rate as the month of January rolls on.

THIRD QUARTER SUCCESS

The Spartans have been one of the nation's top third quarter teams this season, outscoring its opponents to the tune of a 366-290 (+76) margin. They posted a pair of 35-point third quarters in an 18 day span earlier in the year, coming out of the locker rooms red hot against La Verne and New Mexico.

MAKING SOME HISTORY

San José State set multiple school records in its Dec. 14 victory over La Verne. The 128 points scored by the Spartans set a program record for scoring in a single game, topping its previous high of 119 (vs. Columbia, 2014). Its 66-point win broke a record for margin of victory that had stood since 1979 (65 vs. Cal Poly, 1979). In addition, SJSU's 44 made field goals matched the school record for makes in a single game (44 vs. Arizona on Jan. 4, 1979).

Series Scores vs. UNLV (Since 1990-91)

1990-91	L	84-55	1995-96	W	78-66	2015-16	W	61-69
		L 79-46			L 80-73	2016-17	W	76-65
1991-92	L	95-55	1996-97	L	66-60			L 63-55
		L 72-60			W 70-60	2017-18	L	79-60
1992-93	L	84-69	2010-11	L	80-48			L 80-53
		L 95-52	2011-12	L	78-41	2018-19	L	53-43
1993-94	L	84-59	2013-14	L	90-76			L 74-70
		W 78-70			L 78-75			
1994-95	L	75-59	2014-15	L	72-68 (OT)			
		L 86-56			W 99-97			

School & Team Identification

University:

We ask to be referred to as **San José State**

To achieve the accent over the e in José:

On a Mac - select the following keys "option" "e" and "e" again

On a PC - hold the "ctrl", the apostrophe and the "e"

Graphics or Abbreviations:

Please use **SJSU**, never SJSt., SJS, SJ or San Jose

Nickname:

Teams of both gender are referred to as **Spartans**

The women's teams are never referred to as the Lady Spartans



The Last Time

A SPARTAN SCORED 30 OR MORE POINTS

33, Ayzhiana Basallo vs. USD - November 23, 2019

A SPARTAN GRABBED 14 OR MORE REBOUNDS

14, Tyra Whitehead at Nevada - January 8, 2020

A SPARTAN DISHED OUT 12 OR MORE ASSISTS

12, Danae Marquez vs. La Verne - December 14, 2019

A SPARTAN HAD 5 OR MORE STEALS

8, Courtesy Clark vs. La Verne - December 14, 2019

A SPARTAN HAD 5 OR MORE BLOCKED SHOTS

5, Riana Byrd at Air Force - January 30, 2016

A PLAYER MADE 10 OR MORE FIELD GOALS

10, Tyra Whitehead at Santa Clara - November 12, 2019

A SPARTAN MADE 10 OR MORE FREE THROWS

12, Ayzhiana Basallo at CSUB - November 29, 2019

A SPARTAN MADE 5 OR MORE 3-POINTERS

5, Ayzhiana Basallo vs. Fresno State - January 4, 2020

THE SPARTANS SCORED 100 OR MORE POINTS

128, vs. La Verne (128-62) - December 14, 2019

THE SPARTANS GAVE UP 100 POINTS

110, at New Mexico - February 27, 2019

THE SPARTANS WON BY 30 OR MORE POINTS

66, vs. La Verne (128-62) - December 14, 2019

THE SPARTANS LOST BY 30 OR MORE POINTS

38, at New Mexico (110-72) - February 27, 2019

Furious Comeback Falls Short At UNLV

Las Vegas, Nev. – Trailing by 12 points late in the fourth quarter, the San José State women's basketball team went on an 11-0 run over two minutes and 30 seconds to close to within one point, but could get no closer and fell to the UNLV Rebels 74-70 on Saturday afternoon.

"I was really happy with our effort tonight," head coach Jamie Craighead said. "We got it down to a one-possession game and gave ourselves a chance to win, but we didn't get a few calls which could have made it a different outcome."

The Spartans (2-21, 1-11 MW) were down by as many as 13 points in the second half and trailed 71-59 with 2:48 to play. Fieme'a Hafoka hit a three and 20 seconds later Megan Anderson hit another to make it a six-point game with 2:09 on the clock. Three straight free throws, two by Anderson with 1:36 left and another from Raziya Potter at the 1:27 mark made it 71-68.

Mikaylah Wilson hit a jumper with 18 seconds to go to bring San José State to within a point, 71-70. With no timeouts left, the Spartans were forced to foul. UNLV hit three of their last four to secure the 74-70 victory.

The Spartans were led by a season-high 16 points from Anderson, who also equaled her career-high with nine rebounds. Danae Marquez had 12 points, including a pair of threes, five rebounds and four assists. She moved into a tie with Natalie St. Mary for 17th place on the program's career-assists list with 188 and moved into a 22nd-place tie on the career three-point list with Andrea Kohlhaas with 53 threes.

The other Spartan in double figure scoring was Cydni Lewis. She had 11 points, four rebounds, one assist, two steals and a block.

Alexis Harris added six points and blocked a pair of Rebels shots. She has 44 blocks in her career and ranks 24th on the career-blocks list. Wilson scored four points, grabbed four boards and with her one block, the 45th of her career, is 23rd on the SJSU blocks list.

The Spartans struggled out of the gate. They were getting the shots they wanted but couldn't knock them down. Twice they found themselves down by 10 points; 12-2 with 4:11 into the game and 18-8 with 4:07 left in the period. But then they caught fire from long distance.

Fieme'a Hafoka started the rally with a three. Marquez then hit one on the next possession and Hafoka made her second right after Marquez. With 1:13 to go in the quarter Lewis hit the team's fourth trey of the period, which pulled SJSU to within four at 24-20.

Lewis made the teams next two buckets to tie the game at 24-24 inside 10 seconds to play. UNLV hit a bucket with a second to go and the score was 26-24 after one.

Five straight points from Megan Anderson to open the second gave SJSU its first lead of the game, 29-26. A Potter layup with 7:18 to go before half put the Spartans up 31-29, but in the last 5:21, UNLV (9-15, 7-6) outscored San Jose State 11-4 and took a seven-point lead into the locker room, 44-37.

Coming out of halftime, the Rebels extended its lead to as many as 12 points in the third before SJSU got it down to eight, 59-51, heading into the final 10 minutes.

UNLV pressed its advantage back to double digits early in the fourth and had its largest lead 69-56 with 4:46. The Spartans comeback commenced a few minutes later, but UNLV held on for the four-point victory.

Welcome to San José State University. The following information is presented to assist the working media in its coverage of the 2019-20 season. The SJSU Athletics Media Relations Office will be available throughout the year to assist you.

SPARTANS IN THE NEWS

Be sure to bookmark our clips and links page (<http://bit.ly/ClipsandLinks>) for all of the latest San José State women's basketball coverage.

CREDENTIAL REQUESTS

Requests for the media area credentials and photo credentials should be directed to Connor Pelton, Assistant Athletics Media Relations Director, at connor.pelton@sjsu.edu. Requests must be made at least 24 hours prior to game time. Credentials will either be mailed or held at the Will Call window, located at the west side of the Provident Credit Union Event Center or at the Athletics Ticket Office.

THE PROVIDENT CREDIT UNION EVENT CENTER

The Provident Credit Union Event Center is located on the San José State campus where Seventh Street dead ends on the south side of campus. Parking is located in the Seventh Street Garage located on the corner of Seventh and San Salvador Streets.

POSTGAME PROCEDURES

Approximately 10 minutes after the team leaves the court, head coach Jamie Craighead and a minimum of two players will come to the Provident Credit Union Event Center's Green Room for a post game press conference. The Green Room is located under the south side of the seating bowl. Opponent coach and players may be interviewed outside their locker room with the consent of the visiting Media Relations Director.

COACH CRAIGHEAD AND PLAYER INTERVIEWS

All interview requests for head coach Jamie Craighead or any players should be made through the San José State Athletics Media Relations Office at least 24 hours in advance. Players are available as their class schedules, practices and meetings permit. Players will not be available until after the contest on game days. Media members are also required to make prior arrangements with the SJSU Media Relations Office to attend any practice session.

SPARTAN BROADCASTS

San José State women's basketball will be broadcast on multiple platforms during the 2019-20 season. All home and all Mountain West contests will be broadcast on the Mountain West Network. Broadcasts of home games will begin approximately 15 minutes prior to tip. Handling the play-by-play is Daniel Barrera. Broadcasts of non-conference road contests will be handled by those institutions and will be linked to the team's schedule page.

MOUNTAIN WEST CONFERENCE MEDIA INFORMATION

For any information concerning Mountain West basketball, contact Melissa Katz, Assistant Director of Strategic Communications. Mountain West basketball information is also available on-line at <http://www.themw.com>.



	Guard	Guard	Guard	Guard/Forward	Forward
at UC Irvine	Ayzhiana Basallo	Megan Anderson	Fieme'a Hafoka	Raziya Potter	Tyra Whitehead
EASTERN WASHINGTON	Ayzhiana Basallo	Megan Anderson	Fieme'a Hafoka	Raziya Potter	Tyra Whitehead
at Santa Clara	Ayzhiana Basallo	Megan Anderson	Fieme'a Hafoka	Raziya Potter	Tyra Whitehead
at UC Santa Barbara	Ayzhiana Basallo	Megan Anderson	Fieme'a Hafoka	Raziya Potter	Tyra Whitehead
SACRAMENTO STATE	Ayzhiana Basallo	Megan Anderson	Fieme'a Hafoka	Raziya Potter	Tyra Whitehead
BUFFALO	Ayzhiana Basallo	Megan Anderson	Fieme'a Hafoka	Raziya Potter	Tyra Whitehead
SAN DIEGO	Ayzhiana Basallo	Megan Anderson	Fieme'a Hafoka	Raziya Potter	Tyra Whitehead
at CSU Bakersfield	Ayzhiana Basallo	Megan Anderson	Fieme'a Hafoka	Raziya Potter	Tyra Whitehead
at Utah State	Ayzhiana Basallo	Megan Anderson	Fieme'a Hafoka	Raziya Potter	Tyra Whitehead
SAN DIEGO STATE	Ayzhiana Basallo	Megan Anderson	Fieme'a Hafoka	Raziya Potter	Tyra Whitehead
LA VERNE	Ayzhiana Basallo	Megan Anderson	Fieme'a Hafoka	Raziya Potter	Tyra Whitehead
vs. BYU	Danae Marquez	Megan Anderson	Fieme'a Hafoka	Raziya Potter	Tyra Whitehead
vs. Northern Arizona	Danae Marquez	Megan Anderson	Fieme'a Hafoka	Raziya Potter	Tyra Whitehead
at New Mexico	Ayzhiana Basallo	Megan Anderson	Fieme'a Hafoka	Raziya Potter	Tyra Whitehead
FRESNO STATE	Ayzhiana Basallo	Megan Anderson	Fieme'a Hafoka	Raziya Potter	Tyra Whitehead
at Nevada	Ayzhiana Basallo	Megan Anderson	Fieme'a Hafoka	Raziya Potter	Tyra Whitehead
at Colorado State	Ayzhiana Basallo	Megan Anderson	Fieme'a Hafoka	Raziya Potter	Tyra Whitehead
UNLV					
NEW MEXICO					
at Air Force					
BOISE STATE					
at Wyoming					
NEVADA					
at Fresno State					
AIR FORCE					
at Boise State					
COLORADO STATE					
UTAH STATE					
at UNLV					





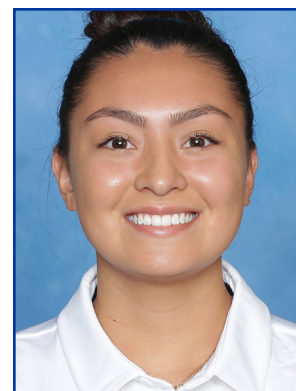
#0 Raziya Potter



#3 Ayzhiana Basallo



#4 Fieme'a Hafoka



#5 Analyss Benally



#12 Shaila Mays



#13 Kalina Obrey



#15 Tyra Whitehead



#21 Irene Chukwudi



#22 Danae Marquez



#23 Miyah Lewis-Hampton



#24 Alexis Harris



#30 Megan Anderson



#33 Courtesy Clark



#35 Cydni Lewis





2019-20 San José State Women's Basketball Roster

No.	Name	Pos.	Ht.	Yr.	Hometown	Last School
0	Raziya Potter	G	6-0	So.	Tracy, Calif.	Kimball HS
3	Ayzhiana Basallo	G	5-5	So.	San Francisco, Calif.	Cal Poly
4	Fieme'a Hafaoka	G	5-9	Jr.	Kihei, Hawaii	Lahainaluna HS
5	Analyss Benally	G	5-8	Sr.	Shiprock, N.M.	Wichita-Heights HS
12	Shaila Mays	G	5-9	Fr.	Phoenix, Ariz.	Pinnacle HS
13	Kalina Obrey	G/F	5-10	Fr.	Honolulu, Hawaii	Kamehameha Kapalama HS
15	Tyra Whitehead	F	6-3	Jr.	Richmond, Va.	Wake Forest
21	Irene Chukwudi	F	6-2	Jr.	Port Harcourt, Nigeria	Barton CC
22	Danae Marquez	G	5-5	Jr.	Fresno, Calif.	Clovis West HS
23	Miyah Lewis-Hampton	F	5-11	RS-Fr.	San Francisco, Calif.	Leadership HS
24	Alexis Harris	C	6-3	Sr.	Palo Alto, Calif.	Palo Alto HS
30	Megan Anderson	G	6-0	Jr.	Fresno, Calif.	Clovis West HS
33	Courtesy Clark	G	5-10	Jr.	Sacramento, Calif.	McClatchy HS
35	Cydni Lewis	F	6-0	Jr.	Long Beach, Calif.	Mater Dei HS

Staff

Head Coach: Jamie Craighead (Oregon, 2002) - Seventh Season

Assistant Coaches: Alle Moreno (Sacramento State, 2014) - Fifth Season
 Carlotta Kloppenburg (Point Loma Nazarene, 2014) - Second Season
 Arielle Wideman (Nevada, 2014) - Second Season

Director of Operations: Carolyn Ruffino (UC Santa Barbara, 2018) - First Season

Athletic Trainer: Carter Pruitt (Eastern Illinois, 2014) - Second Season





Head Coach
Jamie Craighead
Oregon (2002)
Seventh Year

Craighead's Coaching Record

	<u>Overall</u>	<u>Conf.</u>
2009-10	15-15	10-6
2010-11	4-25	1-15
2011-12	13-18	7-9
2012-13	19-12	13-7
2013-14	11-19	5-13
2014-15	15-17	7-11
2015-16	13-19	11-7
2016-17	11-21	7-11
2017-18	7-23	4-14
2018-19	6-24	5-13
2019-20	11-6	5-1
Total	119-175	70-94

Jamie Craighead was named the eighth head women's basketball coach at San José State University on September 16, 2013.

Entering 2019-20, her seventh season leading the Spartans, Craighead's teams have set and then broken the program's record for points scored in a season, and in 2014-15 set a San José State and Mountain West Conference single-game record when the Spartans scored 119 points in a win over Columbia.

Under Craighead's guidance the Spartans reached the semifinals of the 2015 Mountain West Championship Tournament. It marked just the second time in the 42-year history of the program that the team advanced that far in its conference championship tournament. In addition, the team's 15 wins were the most since the 2004-05 team won 18 games.

The 2013-14 squad established single-season marks for free throws attempted (726) and made (493) as well as three-pointers attempted (793) and made (245). In 2014-15, the Spartans set new marks for three-pointers attempted (872) and made (271), assists (501) and total field goal attempts (2,262).

In her six seasons, Craighead's players have earned nine conference post-season awards for their play on the court. In addition, they have earned 32 Academic All-Mountain West (3.0+ GPA), 13 Mountain West Scholar-Athlete honors (3.5+ GPA), five Dean's Scholar (3.65+ GPA) and three President's Scholar designation (4.0 GPA+) as well as nine Arthur Ashe, Jr. Sport-Scholar Award and a first-team Capital One Academic All-District VIII honor. Finally student athletes, Ta'Rea Cunnigan, the school's all-time leader in scoring, and Emily Vann graduated Magna Cum Laude in 2015 and 2016, respectively.

Craighead came to San José State after spending four seasons at Sacramento State (2010-13), where she was the winningest women's head basketball coach in 20 years and the only coach to post a winning conference record at Sacramento State since they entered the Big Sky Conference in the 1996-97 season. Under her guidance the Hornets reached the Big Sky Conference Tournament for just the fifth (2012) and sixth (2013) times in program history. In those appearances, Sacramento State earned its first tournament wins and reached the semi-final round both years.

The youngest head coach in Division I when she took over the Hornets, Craighead's teams, playing a fast-break type offense, led the Big Sky Conference in scoring in each of her four seasons. Sacramento State set several program records in 2012-13 including field goals made, assists, blocked shots and fewest turnovers committed. In addition, the team's 19 wins equaled the program's single-season record, which was set in the 1990-91 season. The Hornets led the Big Sky in points, 3-pointers, and assists and on the defensive end, topped the league in steals and blocks.

Also in 2012-13, Craighead coached Kylie Kuhns and Megan Kritscher, two of the top post players in the Big Sky Conference. Kuhns, at only six feet tall, broke the school and Big Sky career rebounding records during the year, while also leading the team in scoring.

In four seasons, nine of her players garnered All-Big Sky honors. She coached 2011-12 Big Sky Freshman of the Year Fantasia Hilliard, and 23 of her athletes received Academic All-Big Sky Conference honors for their work in the classroom.

Prior to accepting the top job at Sacramento State, Craighead spent the 2007-08 season as an assistant for the Hornets before being promoted to Associate Head Coach the following year.

Craighead started her coaching career in 2002 under two-time NCAA Division II Coach of the Year Gordy Presnell at Seattle Pacific University. In her three years at SPU, the team posted an 89-5 record, won three PacWest Conference titles, qualified for the NCAA Division II Tournament each year and reached the championship game in 2005. After her success in Seattle, she spent two seasons as an assistant at Portland State University before taking a position at Sacramento State.





#0
Raziya
Potter
 (rah-ZEE-ah)
6-0, G, So.
 Tracy, Calif.

Season Highs

19, at Colorado State (1/11/20)	Points	Same
7, two times	FG Made	7, three times
13, two times	FG Attempts	17, vs. UCI (12/2/18)
2, at Utah State (12/4/19)	3-pt. Made	3, at CU (12/6/18)
5, at Colorado State (1/11/20)	3-pt. Attempts	6, vs. UCI (12/2/18)
7, vs. La Verne (12/14/19)	FT Made	Same
9, two times	FT Attempts	Same
10, at Colorado State (1/11/20)	Rebounds	Same
10, vs. La Verne (12/14/19)	Assists	Same
3, two times	Blocks	Same
4, vs. BYU (12/18/19)	Steals	Same
37, at Nevada (1/8/20)	Minutes	Same

SJSU Career Highs

SJSU Career Notes

Double Figure Scoring Games - 23

Double Figure Rebounding Games - 1

Double Doubles - 2

In her second season as a Spartan
 Led team in scoring as a freshman

MW Rankings - All Games

Free Throw Percentage (10th)644
 Assists (12th) 3.2/g

2019-20 Game-by-Game Statistics

Opponent	PTS	MIN	FGM-FGA	3PM-3PA	FTM-FTA	REB	AST	BLK	STL
UC Irvine	9	23	3-8	0-1	3-4	3	5	0	0
EWU	7	20	1-6	0-1	5-6	3	3	0	2
Santa Clara	9	15	3-12	1-4	2-5	1	3	0	0
UCSB	0	17	0-5	0-2	0-0	2	1	0	0
Sac State	17	24	7-13	0-2	3-7	2	1	1	2
Buffalo	10	18	3-7	0-1	4-4	1	2	0	0
San Diego	10	20	3-7	0-0	4-5	3	4	0	0
CSUB	8	18	2-6	0-2	4-6	5	4	1	1
Utah State	13	19	4-9	2-2	3-6	2	3	1	2
SDSU	5	28	1-3	0-0	3-5	1	3	3	1
La Verne	13	28	3-10	0-3	7-9	3	10	1	1
BYU	11	25	3-9	0-3	5-9	2	3	0	4
NAU	9	30	3-12	0-0	3-4	4	3	0	2
UNM	12	30	3-7	1-2	5-6	4	4	0	0
Fresno St.	7	23	3-7	0-0	1-4	4	2	3	1
Nevada	15	37	6-12	1-2	2-4	2	1	0	2
Colorado St.	19	27	7-13	1-5	4-6	10	3	1	1

NCAA Rankings - All Games

Free Throw Attempts (37th) 90
 Free Throw Makes (69th) 58

Career Statistics (Through 2018-19)

POTTER, Raziya																
Season	gp-gs	min/avg	Total fg-fga pct	3-Point fg-fga pct	F-Throws ft-fta pct	Rebounds				pf	fo	ast	to	blk	stl	Scoring pts avg
2018-1	30-17	609/20.3	98-255 .384	13-50 .260	61-99 .616	15	79	94	3.1	96	7	62	109	13	27	270 9.0
TOTAL	30-17	609/20.3	98-255 .384	13-50 .260	61-99 .616	15	79	94	3.1	96	7	62	109	13	27	270 9.0

Season Notes

Scored 13 points in just 19 minutes in conference opener victory at Utah State (12/4).

Set a career high in blocks (3) in victory over San Diego State (12/7).

Tallied first career double-double in record-setting victory over La Verne (12/14).

Recorded second career double-double in road victory over Colorado State (1/11).





#3 Ayzhiana Basallo

(AYE-zhee-ON-ah BUS-all-OH)

5-5, G, So.

San Francisco, Calif.

Season Highs

33, vs. USD (11/23/19)	Points	Same
9, at Colorado State (1/11/20)	FG Made	Same
22, at Nevada (1/8/20)	FG Attempts	Same
5, vs. Fresno State (1/4/20)	3-pt. Made	Same
8, at SCU (11/12/19)	3-pt. Attempts	Same
16, vs. USD (11/23/19)	FT Made	Same
18, vs. USD (11/23/19)	FT Attempts	Same
5, at CSUB (11/29/19)	Rebounds	Same
11, vs. Sac State (11/17/19)	Assists	Same
	Blocks	
4, at Nevada (1/8/20)	Steals	Same
40, vs. Fresno State (1/4/20)	Minutes	Same

SJSU Career Highs

SJSU Career Notes

Double Figure Scoring Games - 14

Double Figure Rebounding Games - 0

Double Doubles - 2

In her first season as a Spartan
Transferred to SJSU after earning Big West Sixth Player
of the Year honors at Cal Poly

MW Rankings - All Games

Scoring (1st)	20.8/g
Field Goal Percentage (6th)	.470
Assists (2nd)	5.3/g
Free Throw Percentage (1st)	.923

NCAA Rankings - All Games

Points (10th)	20.8/g
Free Throw Percentage (5th)	.923
Assists (23rd)	5.3/g
Assist/Turnover Ratio (91st)	1.86

2019-20 Game-by-Game Statistics

Opponent	PTS	MIN	FGM-FGA	3PM-3PA	FTM-FTA	REB	AST	BLK	STL
UC Irvine	20	26	6-12	2-3	6-6	2	3	0	1
EWU	15	29	7-15	1-4	0-0	0	4	0	2
Santa Clara	29	35	8-15	4-8	9-9	1	6	0	3
UCSB	26	36	7-12	0-0	12-16	2	6	0	0
Sac State	21	34	7-9	3-4	4-4	2	11	0	1
Buffalo	18	34	7-15	1-2	3-3	4	10	0	2
San Diego	33	35	8-13	1-2	16-18	1	9	0	0
CSUB	24	35	6-19	0-3	12-12	2	2	0	2
Utah State	20	35	8-18	1-2	3-3	2	4	0	2
SDSU	20	35	6-14	1-4	7-8	3	5	0	2
La Verne	8	13	2-6	2-2	2-2	3	2	0	1
BYU	-	-	-	-	-	-	-	-	-
NAU	-	-	-	-	-	-	-	-	-
UNM	19	35	7-12	3-4	2-2	3	5	0	1
Fresno St.	17	40	5-13	5-6	2-2	3	7	0	0
Nevada	16	39	8-22	0-5	0-0	3	5	0	4
Colorado St.	26	35	9-20	2-7	6-6	2	1	0	1

Career Statistics (Through 2018-19)

Season Notes

Tallied 20 points in her first career game with the Spartans (at UC Irvine, 11/5).

Set a career-high with 29 points at Santa Clara (11/12)

Tallied double-doubles in back-to-back games (vs. Sacramento State and Buffalo).

Earned consecutive Mountain West Player of the Week awards for weeks of Nov. 11-17 and 18-24.





#4 Fieme'a Hafoka

(FEE-aye-meh-ah ha-FOE-ka)

5-9, G, Sr.

Kihei, Hawaii

Season Highs

17, vs. La Verne (12/14/19)	Points	17, two times
8, two times	FG Made	8, three times
15, three times	FG Attempts	13, two times
3, vs. EWU (11/8/19)	3-pt. Made	3, five times
6, vs. La Verne (12/14/19)	3-pt. Attempts	7, at UNLV (2/16/19)
5, vs. Sac State (11/17/19)	FT Made	Same
6, vs. Sac State (11/17/19)	FT Attempts	Same
8, four times	Rebounds	9, vs. BSU (2/9/19)
7, vs. New Mexico (1/4/20)	Assists	Same
1, eight times	Blocks	2, two times
4, two times	Steals	6, at UNLV (2/16/19)
35, two times	Minutes	35, three times

SJSU Career Highs

SJSU Career Notes

Double Figure Scoring Games - 24

Double Figure Rebounding Games - 0

Double Doubles - 0

In her fourth season as a Spartan

Lost in fifth game of 2017-18 due to injury

MW Rankings - All Games

Steals (9th)1.8/g

Assists (13th)2.8/g

2019-20 Game-by-Game Statistics

Opponent	PTS	MIN	FGM-FGA	3PM-3PA	FTM-FTA	REB	AST	BLK	STL
UC Irvine	8	26	4-8	0-2	0-0	8	1	1	2
EWU	13	29	4-7	3-4	2-2	2	4	0	4
Santa Clara	2	30	1-7	0-3	0-0	3	2	0	0
UCSB	13	32	5-11	1-3	2-2	4	5	0	2
Sac State	7	27	1-7	0-3	5-6	2	1	0	2
Buffalo	9	25	2-9	1-3	4-4	7	5	0	1
San Diego	10	29	4-5	2-3	0-0	6	1	1	0
CSUB	12	31	5-11	2-5	0-0	5	0	1	1
Utah State	9	30	4-11	1-3	0-0	8	4	1	1
SDSU	7	30	1-8	1-2	4-4	8	5	1	1
La Verne	17	22	8-15	1-6	0-1	8	6	1	3
BYU	7	23	2-8	0-3	3-4	4	1	0	2
NAU	9	35	2-9	2-5	3-4	5	3	1	3
UNM	13	30	6-13	0-3	1-1	2	2	0	4
Fresno St.	8	33	4-13	0-3	0-1	6	7	0	1
Nevada	11	35	4-10	0-1	3-4	4	1	1	2
Colorado St.	4	30	1-3	0-2	2-2	1	0	0	1

NCAA Rankings - All Games

Career Statistics (Through 2018-19)

HAFOKA, Fieme'a																
Season	gp-gs	min/avg	Total fg-fga	pct	3-Point fg-fga	pct	F-Throws ft-fta	pct	Rebounds off def tot	avg	pf	fo	ast	to	blk	stl
2016-1	30-0	245/8.2	15-51	.294	3-10	.300	2-3	.667	10	21	31	1.0	23	0	14	15
2017-1	30-20	679/22.6	78-220	.355	17-70	.243	9-15	.600	35	65	100	3.3	56	0	55	70
2018-1	30-30	838/27.9	100-241	.415	34-92	.370	24-30	.800	33	77	110	3.7	43	0	82	66
TOTAL	90-50	1762/19.6	193-512	.377	54-172	.314	35-48	.729	78	163	241	2.7	122	0	151	151

Season Notes

Scored a season-high 13 points in 84-66 victory over Eastern Washington (11/8).

Matched a career high for minutes played (35) in homecoming game against Northern Arizona in Lahaina (12/19).

Set a career high for assists (7) against Fresno State (1/4).

Made game-winning field goal in overtime at Nevada (1/8).





#5 Analyss Benally

(anna-LEASE BEN-olley)

5-8, G, Sr.

Shiprock, N.M.

Season Highs

6, vs. Buffalo (11/21/19)	Points	31, vs. SDSU (3/2/19)
2, vs. Buffalo (11/21/19)	FG Made	10, vs. SDSU (3/2/19)
3, vs. Buffalo (11/21/19)	FG Attempts	17, vs. SDSU (3/2/19)
2, vs. Buffalo (11/21/19)	3-pt. Made	7, vs. SDSU (3/2/19)
3, vs. Buffalo (11/21/19)	3-pt. Attempts	12, vs. SDSU (3/2/19)
	FT Made	5, vs. BSU (2/9/19)
	FT Attempts	5, vs. BSU (2/9/19)
	Rebounds	5, at PSU (11/11/18)
1, at UCSB (11/15/19)	Assists	4, vs. SFSU (11/6/18)
	Blocks	1, five times
	Steals	3, vs. UNM (2/13/19)
11, vs. Buffalo (11/21/19)	Minutes	32, two times

SJSU Career Notes

Double Figure Scoring Games - 15

Double Figure Rebounding Games - 0

Double Doubles - 0

In her fourth season as a Spartan

60 threes in 2017-18 set an SJSU sophomore record

MW Rankings - All Games

2019-20 Game-by-Game Statistics

Opponent	PTS	MIN	FGM-FGA	3PM-3PA	FTM-FTA	REB	AST	BLK	STL
UC Irvine	-	-	-	-	-	-	-	-	-
EWU	-	-	-	-	-	-	-	-	-
Santa Clara	0	3	0-2	0-2	0-0	0	0	0	0
UCSB	0	2	0-0	0-0	0-0	0	1	0	0
Sac State	0	2	0-0	0-0	0-0	0	0	0	0
Buffalo	6	11	2-3	2-3	0-0	0	0	0	0
San Diego	-	-	-	-	-	-	-	-	-
CSUB	-	-	-	-	-	-	-	-	-
Utah State	-	-	-	-	-	-	-	-	-
SDSU	-	-	-	-	-	-	-	-	-
La Verne	-	-	-	-	-	-	-	-	-
BYU	-	-	-	-	-	-	-	-	-
NAU	-	-	-	-	-	-	-	-	-
UNM	-	-	-	-	-	-	-	-	-
Fresno St.	-	-	-	-	-	-	-	-	-
Nevada	-	-	-	-	-	-	-	-	-
Colorado St.	-	-	-	-	-	-	-	-	-

NCAA Rankings - All Games

Career Statistics (Through 2018-19)

BENALLY, Analyss

Season	gp-gs	min/avg	Total fg-fga pct	3-Point fg-fga pct	F-Throws ft-fga pct	Rebounds off def tot avg	pf	fo	ast	to	blk	stl	pts	avg
2016-1	17-0	55/3.2	1-15 .067	1-15 .067	0-0 .000	0 1 1 0.1	4	0	1	1	0	2	3	0.2
2017-1	30-14	606/20.2	69-195 .354	60-176 .341	10-11 .909	4 46 50 1.7	34	1	24	22	2	11	208	6.9
2018-1	30-10	677/22.6	83-243 .342	57-178 .320	25-30 .833	11 38 49 1.6	45	0	30	39	6	13	248	8.3
TOTAL	77-24	1338/17.1	153-453 .338	118-369 .320	35-41 .854	15 85 100 1.3	83	1	55	62	8	26	459	6.0

Season Notes

Scored first points of the season in victory over Buffalo (11/21).





#12 Shaila Mays (SHY-luh) 5-9, G, Fr. Phoenix, Ariz.

Season Highs

SJSU Career Highs

.....	Points
.....	FG Made
2, vs. EWU (11/8/19)	FG Attempts	Same
.....	3-pt. Made
1, vs. EWU (11/8/19)	3-pt. Attempts	Same
.....	FT Made
.....	FT Attempts
.....	Rebounds
.....	Assists
.....	Blocks
.....	Steals
10, vs. EWU (11/8/19)	Minutes	Same

SJSU Career Notes

Double Figure Scoring Games - 0

Double Figure Rebounding Games - 0

Double Doubles - 0

In her first season as a Spartan

Made collegiate debut vs. Eastern Washington (11/8/19)

MW Rankings - All Games

2019-20 Game-by-Game Statistics

Opponent	PTS	MIN	FGM-FGA	3PM-3PA	FTM-FTA	REB	AST	BLK	STL
UC Irvine	-	-	-	-	-	-	-	-	-
EWU	0	10	0-2	0-1	0-0	0	0	0	0
Santa Clara	0	1	0-0	0-0	0-0	0	0	0	0
UCSB	0	0+	0	0	0	0	0	0	0
Sac State	-	-	-	-	-	-	-	-	-
Buffalo	-	-	-	-	-	-	-	-	-
San Diego	-	-	-	-	-	-	-	-	-
CSUB	-	-	-	-	-	-	-	-	-
Utah State	-	-	-	-	-	-	-	-	-
SDSU	-	-	-	-	-	-	-	-	-
La Verne	-	-	-	-	-	-	-	-	-
BYU	-	-	-	-	-	-	-	-	-
NAU	-	-	-	-	-	-	-	-	-
UNM	-	-	-	-	-	-	-	-	-
Fresno St.	-	-	-	-	-	-	-	-	-
Nevada	-	-	-	-	-	-	-	-	-
Colorado St.	-	-	-	-	-	-	-	-	-

NCAA Rankings - All Games

Career Statistics (Through 2018-19)

Season Notes

Made collegiate debut vs. Eastern Washington (11/8).





#13 Kalina Obrey

(CUH-lean-UH OH-brey)

5-10, G/F, Fr.

Honolulu, Hawaii

Season Highs

SJSU Career Highs

9, vs. La Verne (12/14/19)	Points	Same
3, vs. La Verne (12/14/19)	FG Made	Same
4, vs. La Verne (12/14/19)	FG Attempts	Same
3, vs. La Verne (12/14/19)	3-pt. Made	Same
3, vs. La Verne (12/14/19)	3-pt. Attempts	Same
	FT Made	
	FT Attempts	
3, vs. La Verne (12/14/19)	Rebounds	Same
1, two times	Assists	Same
	Blocks	
1, vs. BYU (12/18/19)	Steals	Same
17, vs. La Verne (12/14/19)	Minutes	Same

SJSU Career Notes

Double Figure Scoring Games - 0

Double Figure Rebounding Games - 0

Double Doubles - 0

In her first season as a Spartan

Made collegiate debut vs. Eastern Wash. (11/8/19)

Scored first-career points vs. La Verne (12/14/19)

MW Rankings - All Games

2019-20 Game-by-Game Statistics

Opponent	PTS	MIN	FGM-FGA	3PM-3PA	FTM-FTA	REB	AST	BLK	STL
UC Irvine	-	-	-	-	-	-	-	-	-
EWU	0	3	0-0	0-0	0-0	0	0	0	0
Santa Clara	-	-	-	-	-	-	-	-	-
UCSB	0	1	0-0	0-0	0-0	0	0	0	0
Sac State	-	-	-	-	-	-	-	-	-
Buffalo	0	2	0-0	0-0	0-0	0	0	0	0
San Diego	-	-	-	-	-	-	-	-	-
CSUB	-	-	-	-	-	-	-	-	-
Utah State	0	2	0-0	0-0	0-0	0	0	0	0
SDSU	-	-	-	-	-	-	-	-	-
La Verne	9	17	3-4	3-3	0-0	3	1	0	0
BYU	3	9	1-2	1-2	0-0	2	1	0	1
NAU	0	4	0-0	0-0	0-0	0	0	0	0
UNM	0	2	0-0	0-0	0-0	1	0	0	0
Fresno St.	-	-	-	-	-	-	-	-	-
Nevada	-	-	-	-	-	-	-	-	-
Colorado St.	0	0+	0-0	0-0	0-0	0	0	0	0

NCAA Rankings - All Games

Career Statistics (Through 2018-19)

Season Notes

Made collegiate debut vs. Eastern Washington (11/8).

Went three-for-three from three-point range and scored first-career points in record-setting victory over La Verne (12/14).





#15 Tyra Whitehead 6-3, F, Jr. Richmond, Va.

Season Highs	SJSU Career Highs
22, vs. Fresno State (1/4/20)	Points Same
10, at SCU (11/12/19)	FG Made Same
19, two times	FG Attempts Same
.....	3-pt. Made
.....	3-pt. Attempts
4, three times	FT Made Same
5, vs. Fresno State (1/4/20)	FT Attempts Same
20, vs. Fresno State (1/4/20)	Rebounds Same
4, at New Mexico (1/1/20)	Assists Same
2, four times	Blocks Same
5, vs. Sac State (11/17/19)	Steals Same
37, at Nevada (1/8/20)	Minutes Same

SJSU Career Notes

Double Figure Scoring Games - 13

Double Figure Rebounding Games - 8

Double Doubles - 7

In her first season as a Spartan

Arrives at SJSU after transferring in from Wake Forest

Recorded double-double in first game as a Spartan

MW Rankings - All Games

Scoring (10th) 13.7/g

Rebounds (1st) 10.1/g

Steals (2nd) 2.5/g

Field Goal Percentage (3rd)505

NCAA Rankings - All Games

Total Steals (24th) 43

Made Field Goals (47th) 103

Field Goal Percentage (80th)505

2019-20 Game-by-Game Statistics

Opponent	PTS	MIN	FGM-FGA	3PM-3PA	FTM-FTA	REB	AST	BLK	STL
UC Irvine	21	32	9-19	0-0	3-3	12	1	0	4
EWU	10	19	3-7	0-0	4-4	6	2	2	1
Santa Clara	21	30	10-19	0-0	1-1	11	2	1	4
UCSB	16	31	6-13	0-0	4-4	6	0	0	3
Sac State	15	30	7-11	0-0	1-3	14	1	1	5
Buffalo	18	30	9-15	0-0	0-0	8	1	0	4
San Diego	15	31	7-9	0-0	1-1	7	0	2	4
CSUB	15	30	6-9	0-0	3-4	7	0	0	1
Utah State	2	20	1-4	0-0	0-0	8	0	1	2
SDSU	16	26	8-16	0-0	0-0	9	0	1	0
La Verne	19	15	8-14	0-0	3-4	13	1	2	2
BYU	8	27	4-9	0-0	0-2	7	1	0	1
NAU	12	26	5-16	0-0	2-3	11	1	0	3
UNM	3	30	1-7	0-0	1-2	9	4	0	2
Fresno St.	22	32	9-15	0-0	4-5	20	0	0	0
Nevada	18	37	9-15	0-0	0-0	14	1	2	3
Colorado St.	2	23	1-6	0-0	0-0	10	1	0	4

Career Statistics (Through 2018-19)

Season Notes

Tallied a double-double (21 points, 12 rebounds) in season-opener at UC Irvine (11/5).

Recorded second double-double (21 points, 11 rebounds) at Santa Clara (11/12).

Notched third double-double (15 points, 14 rebounds) in victory over Sacramento State (11/17).

Tallied second 20/20 game (22 points, 20 rebounds) in program history against Fresno State (1/4).





#21 **Irene** **Chukwudi** 6-2, F, Jr.

Port Harcourt, Nigeria

Season Highs

SJSU Career Highs

.....Points
.....FG Made
.....FG Attempts
.....3-pt. Made
.....3-pt. Attempts
.....FT Made
.....FT Attempts
.....Rebounds
.....Assists
.....Blocks
.....Steals
.....Minutes

SJSU Career Notes

Double Figure Scoring Games - 0
 Double Figure Rebounding Games - 0
 Double Doubles - 0

In her first season as a Spartan

2019-20 Game-by-Game Statistics

Opponent	PTS	MIN	FGM-FGA	3PM-3PA	FTM-FTA	REB	AST	BLK	STL
----------	-----	-----	---------	---------	---------	-----	-----	-----	-----

MW Rankings - All Games

NCAA Rankings - All Games

Career Statistics (Through 2018-19)

Season Notes





#22 Danae Marquez (dah-NAY) 5-5, G, Jr. Fresno, Calif.

Season Highs

20, vs. EWU (11/8/19)	Points	21, two times
7, vs. EWU (11/8/19)	FG Made	7, two times
17, vs. NAU (12/19/19)	FG Attempts	17, two times
6, vs. EWU (11/8/19)	3-pt. Made	Same
8, two times	3-pt. Attempts	11, two times
2, four times	FT Made	6, vs. USU (1/30/19)
4, vs. USD (11/23/19)	FT Attempts	8, vs. FS (3/7/19)
4, three times	Rebounds	8, two times
12, vs. La Verne (12/14/19)	Assists	15, vs. SDSU (3/2/19)
1, vs. Buffalo (11/21/19)	Blocks	1, three times
4, two times	Steals	5, two times
36, vs. NAU (12/19/19)	Minutes	Same

SJSU Career Highs

SJSU Career Notes

Double Figure Scoring Games - 23

Double Figure Rebounding Games - 0

Double Doubles - 1

In her third season as a Spartan

Passed 300 career-point mark in 2018-19 season

MW Rankings - All Games

Assists (5th) 3.8/g

Three-Point Field Goals (6th) 2.1/g

Assist/Turnover Ratio (4th) 2.1

2019-20 Game-by-Game Statistics

Opponent	PTS	MIN	FGM-FGA	3PM-3PA	FTM-FTA	REB	AST	BLK	STL
UC Irvine	5	30	2-9	1-5	0-0	1	7	0	2
EWU	20	24	7-11	6-7	0-0	0	3	0	1
Santa Clara	3	24	1-2	1-1	0-0	1	4	0	0
UCSB	9	24	3-6	3-6	0-0	2	2	0	3
Sac State	4	22	2-5	0-3	0-0	0	3	0	0
Buffalo	12	24	4-6	3-4	1-2	4	3	1	0
San Diego	10	22	3-7	2-4	2-4	2	3	0	1
CSUB	7	22	2-9	1-5	2-2	1	2	0	1
Utah State	7	26	2-11	1-8	2-2	4	3	0	2
SDSU	10	24	4-9	2-6	0-0	2	5	0	4
La Verne	15	27	5-8	3-5	2-2	3	12	0	1
BYU	5	33	2-10	1-7	0-0	2	4	0	3
NAU	15	36	5-17	5-8	0-0	2	4	0	3
UNM	14	25	5-9	4-7	0-0	4	3	0	4
Fresno St.	5	28	2-6	1-4	0-0	0	3	0	0
Nevada	3	27	1-7	1-4	0-0	3	3	0	0
Colorado St.	0	21	0-1	0-1	0-0	0	1	0	0

NCAA Rankings - All Games

Three-Point Field Goal Percentage (47th) 41.2

Career Statistics (Through 2018-19)

MARQUEZ, Danae																				
Season	gp-gs	min/avg	Total		3-Point		F-Throws		Rebounds			pf	fo	ast	to	blk	stl	Scoring		
			fg-fga	pct	fg-fga	pct	ft-fta	pct	off	def	tot	avg						pts	avg	
2017-1	30-2	507/16.9	57-152	.375	28-87	.322	13-22	.591	13	45	58	1.9	47	0	98	66	1	35	155	5.2
2018-1	29-26	825/28.4	87-243	.358	44-133	.331	33-41	.805	16	77	93	3.2	57	2	137	90	2	53	251	8.7
TOTAL	59-28	1332/22.2	144-395	.365	72-220	.327	46-63	.730	29	122	151	2.6	104	2	235	156	3	88	406	6.9

Season Notes

Scored 20 points on her 20th birthday vs. Eastern Washington (11/8).

Came off the bench to record first-career double-double in record-setting victory over La Verne (12/14).

Made first start of season against BYU (12/18).

Matched a season-high with four steals in win at New Mexico (1/1).





#23
Miyah
Lewis-Hampton
5-11, F, RS-Fr.
San Francisco, Calif.

Season Highs		SJSU Career Highs
5, vs. La Verne (12/14/19)	Points	Same
1, two times	FG Made	Same
3, vs. NAU (12/19/19)	FG Attempts	Same
	3-pt. Made	
	3-pt. Attempts	
3, vs. La Verne (12/14/19)	FT Made	Same
4, vs. La Verne (12/14/19)	FT Attempts	Same
5, vs. La Verne (12/14/19)	Rebounds	Same
	Assists	
1, two times	Blocks	Same
1, vs. La Verne (12/14/19)	Steals	Same
13, vs. La Verne (12/14/19)	Minutes	Same

SJSU Career Notes

Double Figure Scoring Games - 0

Double Figure Rebounding Games - 0

Double Doubles - 0

In her first season as a Spartan after redshirting last year

MW Rankings - All Games

2019-20 Game-by-Game Statistics

Opponent	PTS	MIN	FGM-FGA	3PM-3PA	FTM-FTA	REB	AST	BLK	STL
UC Irvine	0	1	0-0	0-0	0-0	1	0	0	0
EWU	0	2	0-0	0-0	0-0	0	0	0	0
Santa Clara	-	-	-	-	-	-	-	-	-
UCSB	-	-	-	-	-	-	-	-	-
Sac State	-	-	-	-	-	-	-	-	-
Buffalo	-	-	-	-	-	-	-	-	-
San Diego	-	-	-	-	-	-	-	-	-
CSUB	-	-	-	-	-	-	-	-	-
Utah State	-	-	-	-	-	-	-	-	-
SDSU	-	-	-	-	-	-	-	-	-
La Verne	5	13	1-1	0-0	3-4	5	0	1	1
BYU	0	2	0-0	0-0	0-0	0	0	0	0
NAU	2	1	1-3	0-0	0-0	1	0	1	0
UNM	0	1	0-0	0-0	0-0	1	0	0	0
Fresno St.	-	-	-	-	-	-	-	-	-
Nevada	-	-	-	-	-	-	-	-	-
Colorado St.	-	-	-	-	-	-	-	-	-

NCAA Rankings - All Games

Career Statistics (Through 2018-19)

Season Notes

Made first appearance as a Spartan at UC Irvine (11/5) and grabbed a rebound.

Scored first career points in record-setting victory over La Verne (12/14).





#24 Alexis Harris

(A-lex-HIS)
6-3, C, Sr.
Palo Alto, Calif.

Season Highs

SJSU Career Highs

Points	8, vs. CSUN (12/7/17)
FG Made	3, two times
1, two times	FG Attempts
	9, vs. CSUB (11/7/17)
	3-pt. Made
	3-pt. Attempts
	FT Made
	3, vs. AFA (2/23/19)
1, vs. La Verne (12/14/19)	FT Attempts
	5, vs. CSUN (12/7/17)
5, vs. EWU (11/8/19)	Rebounds
	9, vs. SOU (12/20/17)
	Assists
	1, nine times
1, vs. EWU (11/8/19)	Blocks
	4, vs. SOU (12/20/17)
1, vs. EWU (11/8/19)	Steals
	1, 18 times
9, vs. EWU (11/8/19)	Minutes
	20, at NEB (12/8/18)

SJSU Career Notes

Double Figure Scoring Games - 0

Double Figure Rebounding Games - 0

Double Doubles - 0

In her fourth season as a Spartan

MW Rankings - All Games

2019-20 Game-by-Game Statistics

Opponent	PTS	MIN	FGM-FGA	3PM-3PA	FTM-FTA	REB	AST	BLK	STL
UC Irvine	0	5	0-0	0-0	0-0	3	0	0	0
EWU	0	9	0-1	0-0	0-0	5	0	1	1
Santa Clara	0	2	0-1	0-0	0-0	0	0	0	0
UCSB	-	-	-	-	-	-	-	-	-
Sac State	0	2	0-2	0-0	0-0	1	0	0	0
Buffalo	0	3	0-0	0-0	0-0	1	0	0	0
San Diego	0	5	0-0	0-0	0-0	0	0	0	0
CSUB	0	4	0-0	0-0	0-0	0	0	0	0
Utah State	0	4	0-0	0-0	0-0	1	0	0	0
SDSU	0	1	0-0	0-0	0-0	0	0	0	0
La Verne	0	8	0-0	0-0	0-1	0	0	0	0
BYU	0	7	0-0	0-0	0-0	0	0	0	0
NAU	-	-	-	-	-	-	-	-	-
UNM	-	-	-	-	-	-	-	-	-
Fresno St.	0	1	0-0	0-0	0-0	0	0	0	0
Nevada	-	-	-	-	-	-	-	-	-
Colorado St.	-	-	-	-	-	-	-	-	-

NCAA Rankings - All Games

Career Statistics (Through 2018-19)

HARRIS, Alexis														
Season	gp-gs	min/avg	Total fg-fga	pct	3-Point fg-fga	pct	F-Throws ft-fga	pct	off	def	tot	avg	pf	pts
2016-1	23-0	170/7.4	10-37	.270	0-0	.000	3-10	.300	6	16	22	1.0	25	0
2017-1	28-1	211/7.5	11-39	.282	0-0	.000	8-17	.471	22	26	48	1.7	48	0
2018-1	30-0	274/9.1	21-37	.568	0-0	.000	12-26	.462	30	21	51	1.7	37	0
TOTAL	81-1	655/8.1	42-113	.372	0-0	.000	23-53	.434	58	63	121	1.5	110	0

Season Notes





#30 Megan Anderson

(MAY-gan)
6-0, G, Jr.
Fresno, Calif.

Season Highs

20, at UNM (1/1/20).....	Points.....	22, at UNM (2/27/19)
7, at UNM (1/1/20).....	FG Made.....	8, at UNM (2/27/19)
13, vs. La Verne (12/14/19).....	FG Attempts.....	Same
6, at UNM (1/1/20).....	3-pt. Made.....	6, four times
12, vs. La Verne (12/14/19).....	3-pt. Attempts.....	Same
3, at Utah State (12/4/19).....	FT Made.....	3, five times
4, at Utah State (12/4/19).....	FT Attempts.....	4, five times
6, at Colorado State (1/11/20).....	Rebounds.....	9, two times
2, three times.....	Assists.....	2, 13 times
1, four times.....	Blocks.....	2, two times
4, at Utah State.....	Steals.....	4, two times
35, vs. Fresno State (1/4/20).....	Minutes.....	34, four times

SJSU Career Notes

Double Figure Scoring Games - 23
Double Figure Rebounding Games - 0
Double Doubles - 0

In her third season as a Spartan
Entered 2019-20 as program's all-time leader in three-point percentage

MW Rankings - All Games

Three-Point Field Goal Percentage (1st) 40.2

2019-20 Game-by-Game Statistics

Opponent	PTS	MIN	FGM-FGA	3PM-3PA	FTM-FTA	REB	AST	BLK	STL
UC Irvine	14	32	5-7	4-5	0-0	4	1	0	2
EWU	8	29	2-3	2-3	2-2	3	1	1	1
Santa Clara	9	33	3-10	3-9	0-0	4	1	0	0
UCSB	1	24	0-2	0-2	1-2	1	0	0	1
Sac State	9	31	3-11	3-10	0-0	2	0	0	2
Buffalo	19	34	6-11	5-9	2-2	3	1	0	0
San Diego	6	33	2-6	2-5	0-0	3	1	1	2
CSUB	3	32	1-4	1-3	0-0	2	1	1	1
Utah State	15	31	4-8	4-8	3-4	3	0	0	4
SDSU	17	32	5-8	5-7	2-2	2	1	0	1
La Verne	14	23	5-13	4-12	0-0	2	0	0	3
BYU	3	32	1-2	1-2	0-0	1	2	0	0
NAU	5	28	2-8	1-6	0-0	2	2	0	2
UNM	20	32	7-12	6-11	0-0	5	0	0	1
Fresno St.	3	35	1-10	1-10	0-0	3	1	1	0
Nevada	0	29	0-1	0-1	0-0	3	2	0	0
Colorado St.	3	32	1-7	1-4	0-0	6	0	0	0

NCAA Rankings - All Games

Made Three-Point Field Goals (35th) 43

Career Statistics (Through 2018-19)

ANDERSON, Megan																				
Season	gp-gs	min/avg	Total		3-Point		F-Throws		Rebounds				Scoring							
			fg-fga	pct	fg-fga	pct	ft-fa	pct	off	def	tot	avg	pf	fo	ast	to	blk	stl	pts	avg
2017-1	30-14	545/18.2	51-120	.425	46-105	.438	11-16	.688	6	68	74	2.5	17	0	17	27	2	8	159	5.3
2018-1	30-30	818/27.3	88-221	.398	63-166	.380	28-32	.875	10	86	96	3.2	35	0	21	25	10	21	267	8.9
TOTAL	60-44	1363/22.2	139-341	.408	109-271	.402	39-48	.813	16	154	170	2.8	52	0	38	52	12	29	426	7.1

Season Notes

Went 4-of-5 from three-point range in season opener at UC Irvine (11/5).

Made five three-pointers and led team with 19 points in win over Buffalo (11/21).

Matched career highs in made free throws, free throw attempts and steals in conference opener victory at Utah State (12/4).

Matched career-high for made three-pointers with six makes in win at New Mexico (1/1).





#33 Courtney Clark

(CURT-uh-SEE)

5-10, G, Jr.

Sacramento, Calif.

Season Highs

14, vs. La Verne (12/14/19)	Points	Same
6, vs. La Verne (12/14/19)	FG Made	Same
9, vs. La Verne (12/14/19)	FG Attempts	Same
2, two times	3-pt. Made	2, three times
5, vs. La Verne (12/14/19)	3-pt. Attempts	Same
1, vs. BYU (12/18/19)	FT Made	4, two times
2, three times	FT Attempts	6, two times
7, vs. EWU (11/8/19)	Rebounds	8, vs. UNM (3/5/18)
4, vs. La Verne (12/14/19)	Assists	Same
	Blocks	2, vs. UNM (3/5/18)
8, vs. La Verne (12/14/19)	Steals	Same
19, vs. La Verne (12/14/19)	Minutes	19, two times

SJSU Career Highs

SJSU Career Notes

Double Figure Scoring Games - 1

Double Figure Rebounding Games - 0

Double Doubles - 0

In her third season as a Spartan

MW Rankings - All Games

2019-20 Game-by-Game Statistics

Opponent	PTS	MIN	FGM-FGA	3PM-3PA	FTM-FTA	REB	AST	BLK	STL
UC Irvine	0	12	0-3	0-1	0-0	2	1	0	0
EWU	3	14	1-3	1-2	0-0	7	3	0	1
Santa Clara	0	7	0-1	0-0	0-2	2	1	0	1
UCSB	0	10	0-1	0-0	0-0	0	0	0	0
Sac State	0	14	0-2	0-0	0-0	5	0	0	0
Buffalo	0	5	0-1	0-1	0-0	2	0	0	0
San Diego	0	12	0-1	0-0	0-0	2	1	0	0
CSUB	0	10	0-3	0-1	0-2	1	1	0	1
Utah State	6	12	2-4	2-4	0-0	1	0	0	1
SDSU	3	13	1-4	1-1	0-0	4	1	0	0
La Verne	14	19	6-9	2-5	0-0	5	4	0	8
BYU	1	18	0-3	0-2	1-2	1	0	0	0
NAU	2	17	1-3	0-1	0-0	4	1	0	0
UNM	0	11	0-2	0-1	0-0	3	1	1	1
Fresno St.	3	9	1-2	1-1	0-0	3	0	0	1
Nevada	0	5	0-0	0-0	0-0	1	0	0	0
Colorado St.	0	10	0-0	0-0	0-0	1	0	0	0

NCAA Rankings - All Games

Career Statistics (Through 2018-19)

CLARK, Courtney

Season	gp-gs	min/avg	Total fg-fga pct	3-Point fg-fga pct	F-Throws ft-fta pct	Rebounds off def tot avg	pf	fo	ast	to	blk	stl	Scoring pts avg
2017-1	25-0	156/6.2	12-36 .333	1-5 .200	7-12 .583	14 32 46 1.8	28	0	8	13	4	11	32 1.3
2018-1	28-0	340/12.1	19-76 .250	4-22 .182	14-31 .452	17 41 58 2.1	50	0	25	28	4	25	56 2.0
TOTAL	53-0	496/9.4	31-112 .277	5-27 .185	21-43 .488	31 73 104 2.0	78	0	33	41	8	36	88 1.7

Season Notes

Set a career-high in assists (3) against Eastern Washington (11/8).

Made a pair of three-pointers in conference opener victory at Utah State (12/4).

Set career-highs in points (14), made field goals (6), assists (4), steals (8) and minutes (19) in record-setting victory over La Verne (12/14).





#35 Cydni Lewis

(SID-knee)

6-0, F, Jr.

Long Beach, Calif.

Season Highs

18, vs. BYU (12/18/19)	Points	22, at SDSU (2/24/18)
8, vs. BYU (12/18/19)	FG Made	8, two times
13, vs. Fresno State (1/4/20)	FG Attempts	16, vs. UCI (12/2/18)
2, vs. BYU (12/18/19)	3-pt. Made	4, at CU (12/6/18)
4, at Nevada (1/8/20)	3-pt. Attempts	5, two times
8, vs. La Verne (12/14/19)	FT Made	Same
9, vs. La Verne (12/14/19)	FT Attempts	12, vs. SFSU (11/6/18)
9, at Colorado State (1/11/20)	Rebounds	11, vs. UCI (12/2/18)
2, two times	Assists	3, two times
4, vs. BYU (12/18/19)	Blocks	4, three times
4, two times	Steals	Same
24, two times	Minutes	33, vs. UCI (12/2/18)

SJSU Career Highs

SJSU Career Notes

Double Figure Scoring Games - 19

Double Figure Rebounding Games - 2

Double Doubles - 0

In her third season as a Spartan

Is 11th all-time on the program's career blocks list entering the 2019-20 season.

MW Rankings - All Games

Steals (14th)	1.5/g
Blocks (10th)	0.7/g

2019-20 Game-by-Game Statistics

Opponent	PTS	MIN	FGM-FGA	3PM-3PA	FTM-FTA	REB	AST	BLK	STL
UC Irvine	0	13	0-2	0-1	0-0	2	0	0	0
EWU	8	12	3-5	1-1	1-1	3	0	0	0
Santa Clara	8	20	4-8	0-2	0-2	6	0	3	3
UCSB	8	23	3-6	0-1	2-2	0	0	0	2
Sac State	0	14	0-6	0-1	0-0	8	1	1	1
Buffalo	3	14	0-6	0-1	3-4	5	1	0	0
San Diego	4	13	2-3	0-1	0-0	3	2	0	4
CSUB	2	18	1-5	0-1	0-0	5	0	0	1
Utah State	4	21	2-3	0-1	0-0	5	1	1	2
SDSU	6	11	3-8	0-0	0-0	3	0	0	1
La Verne	14	15	3-8	0-1	8-9	8	0	1	2
BYU	18	24	8-12	2-3	0-0	3	1	0	3
NAU	10	23	4-9	0-0	2-4	4	0	4	4
UNM	0	15	0-2	0-1	0-0	0	1	0	1
Fresno St.	11	24	5-13	1-2	0-0	1	2	1	0
Nevada	9	16	4-6	1-1	0-0	4	0	1	1
Colorado St.	4	22	2-5	0-1	0-0	9	0	1	1

NCAA Rankings - All Games

Career Statistics (Through 2018-19)

LEWIS, Cydni

Season	gp-gs	min/avg	Total fg-fga pct	3-Point fg-fga pct	F-Throws ft-fta pct	Rebounds off def tot avg	pf	fo	ast	to	blk	stl	pts	avg
2017-1	30-22	612/20.4	81-160 .506	0-0 .000	29-46 .630	36 93 129 4.3	57	1	13	34	33	20	191	6.4
2018-1	30-12	692/23.1	84-223 .377	21-52 .404	52-79 .658	27 110 137 4.6	69	1	21	57	28	23	241	8.0
TOTAL	60-34	1304/21.1	165-383 .431	21-52 .404	81-125 .648	63 203 266 4.4	126	2	34	91	61	43	432	7.2

Season Notes

Notched a career-high four steals against San Diego (11/23).

Had a season-high 18 points against BYU (12/18).

Set a career-high with eight made free throws in record-setting victory over La Verne (12/14).



2019-20 San José State Team Game-by-Game Statistics

	Date	Score	W/L	FG	FGA	Pct	3FG	3FGA	Pct	FT	FTA	Pct	Off	Def	Tot	Avg	PF	A	TO	Blk	Stl	Pts	Avg
at UC Irvine	11/5/19	77-79	L	29	68	.426	7	18	.389	12	13	.923	10	32	42	42	23	19	18	1	11	77	77
Eastern Washington	11/8/19	84-66	W	28	60	.467	14	23	.609	14	15	.933	6	23	29	29	14	20	13	4	13	84	84
at Santa Clara	11/12/19	81-89	L	30	77	.390	9	29	.390	12	19	.632	9	24	33	33	22	19	13	4	11	81	81
at UC Santa Barbara	11/15/19	73-70	W	24	56	.429	4	14	.286	21	26	.808	5	19	24	24	21	15	17	0	11	73	73
Sacramento State	11/17/19	73-67	W	27	66	.409	6	23	.261	13	20	.650	9	27	36	36	14	18	22	3	13	73	73
Buffalo	11/21/19	95-88	W	33	73	.452	12	24	.500	17	19	.895	11	24	35	35	22	23	7	1	7	95	95
San Diego	11/23/19	88-82	W	29	51	.569	7	15	.467	23	28	.821	4	28	32	32	20	21	24	4	11	88	88
at CSU Bakersfield	11/29/19	75-71	L	23	66	.348	4	20	.200	21	26	.808	13	23	36	36	19	10	10	3	9	71	71
at Utah State	12/4/19	76-61	W	27	68	.397	11	28	.393	11	15	.733	10	29	39	39	16	15	12	4	16	76	76
San Diego State	12/7/19	84-67	W	29	70	.414	10	20	.500	16	19	.842	13	23	36	36	16	20	13	5	10	84	84
La Verne	12/14/19	128-62	W	44	88	.500	15	37	.405	25	32	.781	19	38	57	57	22	36	19	6	22	128	128
BYU	12/18/19	56-75	L	21	55	.382	5	22	.227	9	17	.529	7	19	26	26	18	13	15	0	14	56	56
Northern Arizona	12/19/19	64-67	L	23	77	.299	8	20	.400	10	15	.667	13	23	36	36	16	14	10	6	17	64	64
at New Mexico	1/1/20	81-80	W	29	64	.453	14	29	.483	9	11	.818	10	26	36	36	15	20	21	2	14	81	81
Fresno State	1/4/20	85-76 (OT)	L	30	79	.380	9	26	.346	7	12	.583	11	32	43	43	21	22	12	5	3	76	76
at Nevada	1/8/20	72-70 (OT)	W	32	73	.438	3	14	.214	5	8	.625	11	28	39	39	14	13	17	4	12	72	72
at Colorado State	1/11/20	58-53	W	21	44	.382	4	20	.200	12	14	.857	5	37	42	42	17	6	17	2	8	58	58
San José State				479	1146	.418	142	382	.372	237	309	.767	166	455	621	36.5	309	304	261	54	202	1337	78.7
Opponents				454	1156	.393	120	413	.291	208	304	.684	245	499	744	43.8	292	290	327	45	127	1236	72.7

Games played: 17
 Points/game: 78.7
 FG Pct: 41.8
 3FG Pct: 37.2
 FT Pct: 76.7
 Rebounds/game: 36.5
 Assists/game: 17.9
 Turnovers/game: 15.4
 Assist/turnover ratio: 1.2
 Steals/game: 11.9
 Blocks/game: 3.2



1

San José State at UC Irvine

11/5/19 at Irvine, Calif.



Official Basketball Box Score - Final
San Jose St. at UC Irvine
11/05/19 Brien Events Center, Irvine, CA
2019-20 Women's Basketball

Officials: Charles Gonzalez, Scott Osborne, Rick Thorne

San Jose St. - 77

Record: 0-1

NO. Name	FG	3P	FT	Rebounds	Fouls	TP	AS	TO	ST	Blocks	+	-
Min	M.A.	M.A.	M.A.	OR DR TOT	PF PD					BS BA		
15 Tyra Whitehead	F 30:52	9-19	0-0	3-3	1 11 12	3 4	21	1	2	4	0	1
0 Raziya Potter	G 23:24	3-8	0-1	3-4	0 3 3	3 5	9	5	2	0	0	2
3 Ayzhana Basallo	G 27:09	6-12	2-3	6-6	1 1 2	4 5	20	3	3	1	0	1
4 Fiemela Haloka	G 26:11	4-8	0-2	0-0	3 5 8	4 1	8	1	4	2	1	1
30 Megan Anderson	G 31:36	5-7	4-5	0-0	0 4 4	0 1	14	1	0	2	0	1
22 Danae Marquez	G 29:26	2-9	1-5	0-0	0 1 1	4 0	5	7	5	2	0	0
35 Cyndi Lewis	12:45	0-2	0-1	0-0	0 2 2	0 1	0	0	0	0	0	0
24 Alexis Harris	05:23	0-0	0-0	0-0	0 3 3	2 0	0	0	2	0	0	0
33 Courtney Clark	12:06	0-3	0-1	0-0	1 1 2	3 1	0	1	0	0	0	0
23 Miyah Lewis-Hampton	01:08	0-0	0-0	0-0	1 0 1	0 1	0	0	0	0	0	0
Team					3 1 4	0	0	0	0	0	0	0
Totals		29-66	7-18	12-13	10 32 42	23 19	77	19	18	11	1	8

Technical Fouls: NONE

Shooting By Period			
1 st	FG%	8-20	40.0%
	3PT%	3-7	42.9%
	FT%	0-0	0%
2 nd	FG%	7-15	46.7%
	3PT%	2-3	66.7%
	FT%	3-4	75%
3 rd	FG%	8-16	50.0%
	3PT%	2-4	50.0%
	FT%	4-4	100%
4 th	FG%	6-17	35.3%
	3PT%	0-4	0.0%
	FT%	5-5	100%
GM	FG%	29-68	42.6%
	3PT%	7-18	38.9%
	FT%	12-13	92.3%

Dead Ball Rebounds: 2, 0

UC Irvine - 79

Record: 1-0

NO. Name	FG	3P	FT	Rebounds	Fouls	TP	AS	TO	ST	Blocks	+	-
Min	M.A.	M.A.	M.A.	OR DR TOT	PF PD					BS BA		
34 Jordan Sanders	F 32:04	9-19	0-3	0-2	1 7 8	2 3	16	1	3	1	1	1
11 Tahila Garza	C 17:42	2-4	0-0	0-2	1 4 5	3 1	4	0	1	0	2	0
3 Lauren Salki	G 31:10	6-13	3-6	1-2	0 1 1	1 3	16	7	4	3	1	0
14 Yazy Sa'Dullah	G 16:54	0-3	0-3	0-0	0 1 1	1 0	0	1	1	0	0	0
15 Alexis Seaton	G 33:25	6-9	0-1	5-8	2 5 7	2 7	17	5	0	2	1	0
21 Haleigh Talbert	19:35	2-4	1-2	0-0	1 4 5	1 3	5	2	2	2	0	0
30 Joy Akagbu-Cleveland	07:35	0-2	0-0	0-0	0 0 0	2 0	0	0	0	1	0	0
22 Chloe Webb	11:01	2-2	0-0	3-6	0 2 2	2 4	7	2	2	1	1	0
35 Sophia Locandro	16:32	5-7	0-0	1-2	1 2 3	3 2	11	0	0	0	1	0
20 Dani Guglielmo	12:55	1-4	1-3	0-0	0 1 1	2 0	3	0	1	1	0	0
10 Jayde Cadee	01:07	0-0	0-0	0-0	0 0 0	0 0	0	0	0	0	0	0
Team					4 1 5	0	0	0	0	0	0	2
Totals		32-67	5-18	10-22	10 28 38	19 23	79	18	14	10	8	1

Technical Fouls: NONE

Shooting By Period		
1 st	FG%	7-15 46.7%
	3PT%	2-6 33.3%
	FT%	1-4 25%
2 nd	FG%	10-15 66.7%
	3PT%	2-5 40.0%
	FT%	3-6 50%
3 rd	FG%	6-19 31.6%
	3PT%	0-4 0.0%
	FT%	5-8 62.5%
4 th	FG%	9-18 50.0%
	3PT%	1-3 33.3%
	FT%	1-4 25%
GM	FG%	32-67 47.8%
	3PT%	5-18 27.8%
	FT%	10-22 45.5%

Dead Ball Rebounds: 5, 0

Biggest lead	SJSU	UCI
6 (1st 1:28)	7 (2nd 4:27)	
Best Scoring Run	9 (1st 1:28)	7 (1st 3:14)
Lead Changes	8	2
Times Tied	4	0
Time with Lead	11:55	25:11

2

Eastern Washington at San José State

11/8/19 at San José, Calif.



Official Basketball Box Score - Final
Eastern Wash. at San Jose St.
11/08/19 Provident Credit Union Event Center, San Jose
2019-20 Women's Basketball

Officials: Michael Price, Benny Luna, Lorena Ahumada

Eastern Wash. - 66

Record: 0-2

NO. Name	FG	3P	FT	Rebounds	Fouls	TP	AS	TO	ST	Blocks	+	-
Min	M.A.	M.A.	M.A.	OR DR TOT	PF PD					BS BA		
12 Kennedy Dickie	F 29:33	4-17	2-10	0-0	1 2 3	1	2	10	1	4	0	0
21 Milly Knowles	F 18:35	2-3	0-0	0-0	0 1 1	2	0	4	2	1	0	0
14 Bella Cravens	C 27:29	4-9	0-0	0-0	4 10 14	1 4	8	3	5	0	1	0
4 Jessica McDowell-White	G 36:14	6-11	4-9	0-0	3 6 9	1	1	18	4	2	2	1
22 Brittany Klamen	G 28:43	2-8	2-5	0-0	2 2 2	3 6	3	2	1	0	1	0
33 Grace Kirscher	G 19:26	3-9	1-4	2-2	2 2 4	2 1	9	1	1	1	0	0
44 Leya DePriest	12:31	3-4	0-0	0-2	3 0 3	4 1	6	0	1	1	0	0
00 Tatianna Reese	03:15	0-1	0-1	0-0	0 0 0	0 2	1	0	1	0	0	0
1 Alexys Newman	06:55	1-5	0-1	0-0	0 0 0	0 0	2	0	0	0	0	0
5 Jenna Dick	17:19	1-3	1-3	2-2	1 1 2	0 0	5	2	1	1	0	0
Team					0 0 0	0	0	0	0	0	0	0
Totals		26-70	10-33	4-6	14 24 38	15 13	66	17	18	6	2	4

Technical Fouls: NONE

Shooting By Period			
1 st	FG%	5-17	29.4%
	3PT%	2-8	25.0%
	FT%	0-0	0%
2 nd	FG%	7-16	43.8%
	3PT%	1-6	16.7%
	FT%	0-0	0%
3 rd	FG%	6-17	35.3%
	3PT%	2-7	28.6%
	FT%	2-4	50%
4 th	FG%	8-20	40.0%
	3PT%	5-12	41.7%
	FT%	2-2	100%
GM	FG%	26-70	37.1%
	3PT%	10-33	30.3%
	FT%	4-6	66.7%

Dead Ball Rebounds: 3, 1

San Jose St. - 84

Record: 1-1

NO. Name	FG	3P	FT	Rebounds	Fouls	TP	AS	TO	ST	Blocks	+	-
Min	M.A.	M.A.	M.A.	OR DR TOT	PF PD					BS BA		
15 Tyra Whitehead	F 18:51	3-7	0-0	4-4	2 4 6	4 4	10	2	3	1	2	0
0 Raziya Potter	G 21:13	1-6	0-1	5-6	1 2 3	2 4	7	3	1	2	0	0
3 Ayzhana Basallo	G 29:27	7-15	1-4	0-0	0 0 0	1 0	15	4	2	2	0	0
4 Fiemela Haloka	G 27:47	4-7	3-4	2-2	0 2 2	1 1	13	4	3	4	0	0
30 Megan Anderson	G 30:29	2-3	2-3	2-2	0 3 3	2 1	8	1	0	1	1	0
22 Danae Marquez	24:12	7-11	6-7	0-0	0 0 0	1 1	20	3	3	1	0	0
24 Alexis Harris	08:00	0-1	0-0	0-0	1 4 5	0 2	0	0	0	1	1	0
33 Courtney Clark	14:58	1-3	1-2	0-0	1 6 7	1 0	3	3	1	1	0	0
12 Shalia Mays	09:08	0-2	0-1	0-0	0 0 0	0 2	1	0	0	0	0	0
35 Cyndi Lewis	11:39	3-5	1-1	1-1	1 2 3	0 1	8	0	0	0	0	0
13 Kalina Obrey	02:40	0-0	0-0	0-0	0 0 0	0 0	0	0	0	0	0	0
23 Miyah Lewis-Hampton	01:30	0-0	0-0	0-0	0 0 0	0 0	0	0	0	0	0	0
Team					0 0 0	0	0	0	0	0	0	0
Totals		28-60	14-23	14-15	6 23 29	14 15	84	20	13	13	4	2

Technical Fouls: Marquez 4th 1:17

Shooting By Period		
1 st	FG%	5-16 31.3%
	3PT%	1-2 50.0%
	FT%	7-8 87.5%
2 nd	FG%	8-17 47.1%
	3PT%	4-6 66.7%
	FT%	1-1 100%
3 rd	FG%	8-12 66.7%
	3PT%	5-7 71.4%
	FT%	4-4 100%
4 th	FG%	7-15 46.7%
	3PT%	4-8 50.0%
	FT%	2-2 100%
GM	FG%	28-60 46.7%
	3PT%	14-23 60.9%
	FT%	14-15 93.3%

Dead Ball Rebounds: 2, 6

Biggest lead	EWU	SJSU
1 (1st 8:21)	23 (3rd 0:32)	
Best Scoring Run	8 (4th 4:29)	10 (3rd 0:32)
Lead Changes	2	2
Times Tied	3	0
Time with Lead	00:25	37:50

3

San José State at Santa Clara

11/12/19 at Santa Clara, Calif.



Official Basketball Box Score - Final
San Jose St. at Santa Clara
11/12/19 Leavin' Center, Santa Clara
2019-20 Women's Basketball

Officials: Cheryl Flores, Kenneth Nash, Gordon Tongue

San Jose St. - 81

Record: 1-2

NO. Name	FG	3P	FT	Rebounds	Fouls	TP	AS	TO	ST	Blocks	+	-
Min	M.A.	M.A.	M.A.	OR DR TOT	PF PD					BS BA		
15 Tyra Whitehead	F 29:50	10-19	0-0	1-1	4 7 11	5 3	21	2	4	4	1	0
0 Raziya Potter	G 14:27	3-12	1-4	2-5	1 0 1	3 4	9	3	1	0	0	1
3 Ayzhana Basallo	G 35:49	8-15	4-8	9-9	0 1 1	1 7	29	6	2	3	0	1
4 Fiemela Haloka	G 29:31	1-7	0-3	0-0	0 2 3	4 1	2	2	3	0	0	0
30 Megan Anderson	G 32:40	3-10	3-9	0-0	0 4 4	1 0	9	1	0	0	0	1
22 Danae Marquez	23:32	1-2	1-1	0-0	0 1 1	4 0	3	4	2	0	0	0
35 Cyndi Lewis	20:42	4-8	0-2	0-2	0 6 6	3 2	8	0	1	3	3	1
5 Analysis Benally	03:09	0-2	0-2	0-0	0 0 0	0 0	0	0	0	0	0	0
33 Courtney Clark	08:11	0-1	0-0	0-2	1 1 2	0 1	0	1	0	1	0	1
24 Alexis Harris	01:35	0-1	0-0	0-0	0 0 0	0 0	0	0	0	0	0	0
12 Shalia Mays	00:34	0-0	0-0	0-0	0 0 0	1 0	0	0	0	0	0	0
Team					2 2 4	0	0	0	0	0	0	0
Totals		30-77	9-29	12-19	9 24 33	22 18	81	19	13	11	4	5

Technical Fouls: NONE

Shooting By Period		
1 st	FG	5-20 25.0%
	3PT	3-9 33.3%
	FT	0-2 0%
2 nd	FG	11-21 52.4%
	3PT	3-5 60.0%
	FT	4-8 50%
3 rd	FG	4-18 22.2%
	3PT	2-7 28.6%
	FT	2-2 100%
4 th	FG	10-18 55.6%
	3PT	1-8 12.5%
	FT	6-7 85.7%
GM FG	30-77 39.0%	
	3PT	9-29 31.0%
	FT	12-19 63.2%
Dead Ball Rebounds: 3, 2		

9

San José State at Utah State

12/4/19 at Logan, Utah

10

San Diego State at San José State

12/7/19 at San José, Calif.

Official Basketball Box Score -- Game Totals -- Final Statistics

San Jose State vs Utah State

12/4/19 7 p.m. at Logan, Utah (Dee Glen Smith Spectrum)

San Jose State 76 • 6-3, 1-0 MW

#	Player	Total	3-FTA	3-Ptr	Rebounds	PF	TP	A	TO	Blk	Stl	Min				
		FG	FGA	FT	FTA	Off	Def	Tot								
15	Tyra Whitehead	f	1-4	0-0	0-0	3	5	8	5	2	1	2	20			
00	Raziya Potter		4-9	2-2	3-6	2	0	2	13	3	5	1	19			
03	Ayzhiana Basallo	g	8-18	1-2	3-3	1	1	2	20	4	1	0	35			
04	Fieme'a Hafoka	g	4-11	1-3	0-0	1	7	8	0	9	4	0	1	30		
30	Megan Anderson	g	4-8	4-8	3-4	0	3	3	1	15	0	1	0	31		
13	Kalina Obrey		0-0	0-0	0-0	0	0	0	0	0	0	0	2			
22	Danae Marquez		2-11	1-8	2-2	0	4	4	3	7	3	1	0	26		
24	Alexis Harris		0-0	0-0	0-0	1	0	1	0	0	0	1	0	4		
33	Courtney Clark		2-4	2-4	0-0	0	1	1	6	0	0	1	12			
35	Cyndi Lewis		2-3	0-1	0-0	0	5	2	4	1	0	1	21			
	Team					2	3	5			1					
	Totals		27-68	11-28	11-15	10	29	39	16	76	15	12	4	16	200	
1st	FG %:	7-20	35.0%	2nd:	5-17	29.4%	3rd:	6-14	42.9%	4th:	9-17	52.9%	5th:	11-26	39.7%	Deadball
	3FG %:	4-9	44.4%		3-10	30.0%		2-4	50.0%		2-5	40.0%		11-21	52.4%	Rebounds
	FT %:	1-2	50.0%		1-2	50.0%		6-8	75.0%		3-3	100.0%		27-38	71.1%	

1st FG %:	3-14	21.4%	2nd:	5-15	33.3%	3rd:	5-14	35.7%	4th:	5-15	33.3%	Game:	24-64	37.5%	Deadball	3
3FG %:	2-6	33.3%	1-5	20.0%	3-4	75.0%	1-4	25.0%	2-3	66.7%	11-28	39.3%	Rebounds	3		
FT %:	1-2	50.0%	1-2	50.0%	6-8	75.0%	3-5	60.0%	2-4	50.0%	11-15	73.3%	Blocks	3		

Utah State 61 • 3-5, 0-1 MW

#	Player		Total		3-Ptr		Rebounds				PF	TP	A	TO	Blk	Stl	Min
			FG	FGA	FG	FGA	FT	FTA	OR	Def Tot							
12	BASSETT, Hailey	f	6-10	0-1	0-0		1	7	8	2	12	1	1	1	1	32	
24	ANIAMBOSSOU, M.	f	3-9	0-0	0-0		3	4	7	4	6	1	4	0	1	21	
00	BRANTLEY, Faith	g	1-1	0-0	0-0		0	2	2	2	2	2	3	0	1	34	
04	GORMAN, Steph	g	5-19	3-11	2-2		0	7	7	1	15	5	7	1	7	39	
11	JENSEN-BAKER, L.	g	7-14	3-6	3-7		4	3	7	20	1	4	0	0	0	33	
01	KAMAKAWIWO'OLE, K.	g	1-5	1-1	0-0		1	1	2	0	3	0	0	1	0	10	
03	EMRICH, Eli		0-0	0-0	0-0		0	0	0	0	0	0	0	0	0	2	
10	HARRIS, Emmie		0-1	0-0	0-0		0	0	0	1	0	0	1	0	1	5	
14	DUDLEY, Emma		1-4	0-0	1-2		1	6	7	2	3	1	1	0	0	14	
15	DAULTON, Laura		0-0	0-0	0-0		0	0	0	0	0	0	0	0	0	2	
22	POLANSKY, Jocelyn		0-0	0-0	0-0		0	0	0	0	0	0	0	0	0	6	
42	FRANSON, Taylor		0-1	0-0	0-0		1	0	1	0	0	0	0	0	0	2	
	Team						2	2	4								
Totals			24-64	7-19	6-11		13	32	45	15	61	11	25	3	5	200	

1st FG %:	3-14	21.4%	2nd:	5-15	33.3%	3rd:	5-14	35.7%	4th:	5-15	33.3%	Game:	24-64	37.5%	Deadball	3
3FG %:	2-6	33.3%	1-5	20.0%	3-4	75.0%	1-4	25.0%	2-3	66.7%	11-28	39.3%	Rebounds	3		
FT %:	1-2	50.0%	1-2	50.0%	6-8	75.0%	3-5	60.0%	2-4	50.0%	11-15	73.3%	Blocks	3		

Officials: R:Bob Scofield, U1:In'Fini Robinson, U2:Ken Nash
 Technical fouls: San Jose State-None. Utah State-None.
 Attendance: 423

Score by periods	1st	2nd	3rd	4th	Total
San Jose State	19	14	20	23	76
Utah State	8	13	26	14	61

1st FG - SJSU 4th-00:31, US 4th-04:45.
 Largest lead - SJSU by 17 4th-00:31, US None.
 SJSU led for 39:34, US led for 00:00. Game was tied for 00:26.

Score tied - 0 times.
 Lead changed - 0 times.



Official Basketball Box Score - Final

San Diego State at San Jose State

12/07/19 President Credit Union Event Center, San Jose

2019-20 Women's Basketball

Game Time: 10:00 PM
 Game Duration: 1:46
 Attendance: 322

Officials: Lisa Jones, Melissa Barlow, Clarke Stevens

San Diego State - 67

														Shooting By Period			
NO. Name		Min	FG	3P	FT	Reb	OR	DR	Fouls	TP	AS	TO	ST	Blocks	BS	BA	+
4 Monique Terry	F	16:27	1-2	0-0	0-0	1	1	2	1	2	1	2	0	0	0	0	-5
34 Baylee Vanderloes	F	23:11	4-5	1-1	1-2	4	6	10	2	1	20	2	2	0	0	0	-12
2 Sophia Ramos	G	38:55	6-14	0-2	8-10	2	8	10	3	6	2	0	0	0	0	1	-9
5 Tea Adams	G	30:38	1-7	0-2	0-0	0	2	2	1	1	2	3	2	0	1	0	-16
25 Taylor Kalmer	G	40:00	9-21	3-8	1-2	1	3	4	1	1	22	0	4	0	0	2	-17
10 Isabella Hernandez		19:25	2-6	1-3	1-2	0	1	1	0	1	6	1	1	0	0	0	1
22 Zayn Donastauder		12:50	0-1	0-0	3-3	0	4	4	4	4	3	0	0	0	0	0	-7
00 Kennedy Villa		13:52	1-1	0-0	0-0	0	1	1	2	1	2	1	1	2	0	1	0
15 Jayden Perez		01:05	0-0	0-0	0-0	0	0	0	0	0	0	1	0	0	0	0	-8
24 Kiana Edwards		03:36	0-1	0-0	0-0	0	2	2	1	0	1	1	0	0	0	1	1
Team						4	1	5	0								
Totals		24:08	5-16	14-19	12	29	41	15	16	67	14	21	6	2	5	-17	
Technical Fouls:NONE																	

Technical Fouls: NONE

Dead Ball Rebounds: 4.0

San Jose State - 84

Shooting By Period																	
NO. Name	Min	FG	3P	FT	Rebounds	Fouls	TP	AS	TO	ST	Blocks	BS	BA	1st FG	2nd FG	3rd FG	4th FG
		M-A	M-A	M-A	OR DR	PF	PF	PF	PF	PF	PF	PF	PF				
15 Tyra Whitehead	F 25:25	8-16	0-0	0-0	2 7	9 3	2 16	0 1	0 1	0 1	0 19			3PT% 3-4	50.0%		
00 Raziya Potter	G 27:47	1-3	0-0	3-5	1 0	1 1	5 9	1 1	1 3	0 7	11			3PT% 0-0	0.0%		
3 Ayzhiana Basallo	G 34:53	6-14	1-4	7-8	0 3	4 5	20 5	2 2	0 1	3 0	16			2nd FG 3-6	50.0%		
4 Fieme'a Hafoka	G 29:45	1-8	1-2	4-4	3 5	8 2	7 5	5 1	1 0	1 0	2			3PT% 1-3	33.3%		
30 Megan Anderson	G 32:19	5-8	5-7	2-2	0 2	2 1	17 1	0 1	0 1	0 1	16			FT% 5-6	83.3%		
22 Danae Marquez	24:55	4-9	2-6	0-0	1 1	2 1	0 10	5 0	4 0	1 1	17			3rd FG 7-22	31.8%		
33 Courtney Clark	12:28	1-4	1-1	0-0	3 1	4 1	0 3	1 1	0 0	0 0	9			3PT% 4-7	57.1%		
35 Cyndi Lewis	11:36	3-8	0-0	0-0	1 2	3 0	6 0	0 1	1 0	0 0	-1			FT% 0-0	0%		
24 Alexis Harris	00:52	0-0	0-0	0-0	0 0	0 0	2 0	0 1	1 0	0 0	0			4th FG 8-13	61.5%		
Team														3PT% 2-4	50.0%		
Totals		29:70	10-20	16-19	13 23	36 16	15 84	20 13	10 5	2 17				FT% 6-9	75.0%		
Technical Fouls:NONE														GM FG% 29:70	41.4%		
														3PT% 10-20	50.0%		
														FT% 16-19	84.2%		

Technical Fouls: NONE

Dead Ball Rebounds: 2.0

Biggest lead	SDSU	SJSU	Points from Turnovers	SDSU	SJSU	Period by Period Scoring
	6 (1st 6:53)	17 (4th 0:53)	Paint	15	26	1st 2nd 3rd 4th TOT
Best Scoring Run	8 (1st 6:53)	11 (1st 4:25)	Second Chance	10	12	SDSU 24 18 18 24 84
Lead Changes	3	0	Fast Breaks	10	23	
Times Tied	3	0	Bench	11	19	
Time with Lead	03:22	35:14				

11

La Verne at San José State

12/14/18 at San José, Calif.

12

San José State vs. BYU

12/18/19 at Lahaina, Hawaii



Official Basketball Box Score - Final

La Verne at San Jose St.

12/14/19 President Credit Union Event Center, San Jose, CA

2019-20 Women's Basketball

Game Time: 9:00 PM
 Game Duration: 1:53

Officials: Julie Kromerhook, Peter Contreras, Gator Parish

La Verne - 62

NO.	Name	Min	FG		3P		FT		OR		DR		PF		Fouls		AS	TO	ST	Blocks		BS	BA	+/-	Shooting By Period																																																																																																																																																																																																																																																																																																																																																																																																																																																																																																																																																																																																																																																																																																																																																																																																																																																																																																																																																																																																																																																																																										
			M/A	P/A	M/A	P/A	OR	DR	PF	PF	Fouls	Fouls	PF	PF	PF	PF				PF	PF				PF	PF	PF	PF	PF	PF	PF	PF	PF	PF	PF	PF	PF	PF	PF	PF	PF	PF	PF	PF	PF	PF	PF	PF	PF	PF	PF	PF	PF	PF	PF	PF	PF	PF	PF	PF	PF	PF	PF	PF	PF	PF	PF	PF	PF	PF	PF	PF	PF	PF	PF	PF	PF	PF	PF	PF	PF	PF	PF	PF	PF	PF	PF	PF	PF	PF	PF	PF	PF	PF	PF	PF	PF	PF	PF	PF	PF	PF	PF	PF	PF	PF	PF	PF	PF	PF	PF	PF	PF	PF	PF	PF	PF	PF	PF	PF	PF	PF	PF	PF	PF	PF	PF	PF	PF	PF	PF	PF	PF	PF	PF	PF	PF	PF	PF	PF	PF	PF	PF	PF	PF	PF	PF	PF	PF	PF	PF	PF	PF	PF	PF	PF	PF	PF	PF	PF	PF	PF	PF	PF	PF	PF	PF	PF	PF	PF	PF	PF	PF	PF	PF	PF	PF	PF	PF	PF	PF	PF	PF	PF	PF	PF	PF	PF	PF	PF	PF	PF	PF	PF	PF	PF	PF	PF	PF	PF	PF	PF	PF	PF	PF	PF	PF	PF	PF	PF	PF	PF	PF	PF	PF	PF	PF	PF	PF	PF	PF	PF	PF	PF	PF	PF	PF	PF	PF	PF	PF	PF	PF	PF	PF	PF	PF	PF	PF	PF	PF	PF	PF	PF	PF	PF	PF	PF	PF	PF	PF	PF	PF	PF	PF	PF	PF	PF	PF	PF	PF	PF	PF	PF	PF	PF	PF	PF	PF	PF	PF	PF	PF	PF	PF	PF	PF	PF	PF	PF	PF	PF	PF	PF	PF	PF	PF	PF	PF	PF	PF	PF	PF	PF	PF	PF	PF	PF	PF	PF	PF	PF	PF	PF	PF	PF	PF	PF	PF	PF	PF	PF	PF	PF	PF	PF	PF	PF	PF	PF	PF	PF	PF	PF	PF	PF	PF	PF	PF	PF	PF	PF	PF	PF	PF	PF	PF	PF	PF	PF	PF	PF	PF	PF	PF	PF	PF	PF	PF	PF	PF	PF	PF	PF	PF	PF	PF	PF	PF	PF	PF	PF	PF	PF	PF	PF	PF	PF	PF	PF	PF	PF	PF	PF	PF	PF	PF	PF	PF	PF	PF	PF	PF	PF	PF	PF	PF	PF	PF	PF	PF	PF	PF	PF	PF	PF	PF	PF	PF	PF	PF	PF	PF	PF	PF	PF	PF	PF	PF	PF	PF	PF	PF	PF	PF	PF	PF	PF	PF	PF	PF	PF	PF	PF	PF	PF	PF	PF	PF	PF	PF	PF	PF	PF	PF	PF	PF	PF	PF	PF	PF	PF	PF	PF	PF	PF	PF	PF	PF	PF	PF	PF	PF	PF	PF	PF	PF	PF	PF	PF	PF	PF	PF	PF	PF	PF	PF	PF	PF	PF	PF	PF	PF	PF	PF	PF	PF	PF	PF	PF	PF	PF	PF	PF	PF	PF	PF	PF	PF	PF	PF	PF	PF	PF	PF	PF	PF	PF	PF	PF	PF	PF	PF	PF	PF	PF	PF	PF	PF	PF	PF	PF	PF	PF	PF	PF	PF	PF	PF	PF	PF	PF	PF	PF	PF	PF	PF	PF	PF	PF	PF	PF	PF	PF	PF	PF	PF	PF	PF	PF	PF	PF	PF	PF	PF	PF	PF	PF	PF	PF	PF	PF	PF	PF	PF	PF	PF	PF	PF	PF	PF	PF	PF	PF	PF	PF	PF	PF	PF	PF	PF	PF	PF	PF	PF	PF	PF	PF	PF	PF	PF	PF	PF	PF	PF	PF	PF	PF	PF	PF	PF	PF	PF	PF	PF	PF	PF	PF	PF	PF	PF	PF	PF	PF	PF	PF	PF	PF	PF	PF	PF	PF	PF	PF	PF	PF	PF	PF	PF	PF	PF	PF	PF	PF	PF	PF	PF	PF	PF	PF	PF	PF	PF	PF	PF	PF	PF	PF	PF	PF	PF	PF	PF	PF	PF	PF	PF	PF	PF	PF	PF	PF	PF	PF	PF	PF	PF	PF	PF	PF	PF	PF	PF	PF	PF	PF	PF	PF	PF	PF	PF	PF	PF	PF	PF	PF	PF	PF	PF	PF	PF	PF	PF	PF	PF	PF	PF	PF	PF	PF	PF	PF	PF	PF	PF	PF	PF	PF	PF	PF	PF	PF	PF	PF	PF	PF	PF	PF	PF	PF	PF	PF	PF	PF	PF	PF	PF	PF	PF	PF	PF	PF	PF	PF	PF	PF	PF	PF	PF	PF	PF	PF	PF	PF	PF	PF	PF	PF	PF	PF	PF	PF	PF	PF	PF	PF	PF	PF	PF	PF	PF	PF	PF	PF	PF	PF	PF	PF	PF	PF	PF	PF	PF	PF	PF	PF	PF	PF	PF	PF	PF	PF	PF	PF	PF	PF	PF	PF	PF	PF	PF	PF	PF	PF	PF	PF	PF	PF	PF	PF	PF	PF	PF	PF	PF	PF	PF	PF	PF	PF	PF	PF	PF	PF	PF	PF	PF	PF	PF	PF	PF	PF	PF	PF	PF	PF	PF	PF	PF	PF	PF	PF	PF	PF	PF	PF	PF	PF	PF	PF	PF	PF	PF	PF	PF	PF	PF	PF	PF	PF	PF	PF	PF	PF	PF	PF	PF	PF	PF	PF	PF	PF	PF	PF	PF	PF	PF	PF	PF	PF	PF	PF	PF	PF	PF	PF	PF	PF	PF	PF	PF	PF	PF	PF	PF	PF	PF	PF	PF	PF	PF	PF	PF	PF	PF	PF	PF	PF	PF	PF	PF	PF	PF	PF	PF	PF	PF	PF	PF	PF	PF	PF	PF	PF	PF	PF	PF	PF	PF	PF	PF	PF	PF	PF	PF	PF	PF	PF	PF	PF	PF	PF	PF	PF	PF	PF	PF	PF	PF	PF	PF	PF	PF	PF	PF	PF	PF	PF	PF	PF	PF	PF	PF	PF	PF	PF	PF	PF	PF	PF	PF	PF	PF	PF	PF	PF	PF	PF	PF	PF	PF	PF	PF	PF	PF	PF	PF	PF	PF	PF	PF	PF	PF	PF	PF	PF	PF	PF	PF	PF	PF	PF	PF	PF	PF	PF	PF	PF	PF	PF	PF	PF	PF	PF	PF	PF	PF	PF	PF	PF	PF	PF	PF	PF	PF	PF	PF	PF	PF	PF	PF	PF	PF	PF	PF	PF	PF	PF	PF	PF	PF	PF	PF	PF	PF	PF	PF	PF	PF	PF	PF	PF	PF	PF	PF	PF	PF	PF	PF	PF	PF	PF	PF	PF	PF	PF	PF	PF	PF	PF	PF	PF	PF	PF	PF	PF	PF	PF	PF	PF	PF	PF	PF	PF	PF	PF	PF	PF	PF	PF	PF	PF	PF	PF	PF

Dead Ball Rebounds: 6.1

San Jose St. - 128

NO.	Name		Min	Shooting By Period														
				FG	3P	FT	OR	DR	TO	Fouls	PF	AS	TS	ST	Blocks	BS	BA	
15	Tyria Whitehead	F	15:42	8-14	0-0	3-4	5	8	13	0	4	19	1	0	2	2	37	
0	Raziya Potter	G	27:07	3-10	0-3	7-9	2	1	3	4	4	13	10	5	1	1	45	
3	Ayzhiana Basallo	G	12:47	2-6	2-2	2-2	0	3	3	1	2	8	2	5	1	0	17	
4	Fieme'a Hafoka	G	21:55	8-15	1-6	0	2	6	8	0	1	16	6	0	3	1	51	
39	Myah Anderson	G	24:01	5-13	4-12	0-0	1	2	3	0	1	12	10	1	0	0	47	
22	Dance Marquez	5-9	3-5	2-2	1-2	3-4	5	10	15	12	2	1	0	0	0	32		
35	Cyodi Lewis	17:19	5-8	0-1	8-9	3	5	8	3	6	14	0	1	2	1	0	5	
33	Courtney Clark	18:30	6-9	2-5	0-0	2	3	5	4	0	14	4	1	8	0	0	36	
24	Alexis Harris	07:38	0-0	0-0	0-1	0-0	0	0	0	2	2	0	0	0	0	0	17	
13	Kalina Obrey	17:52	3-4	3-3	0-0	0	3	3	0	0	9	1	0	0	0	0	36	
23	Miyah Lewis-Hampton	12:40	1-1	0-0	3-4	1	4	5	2	2	5	0	0	1	1	0	23	
Team				3 1 4 0 0 1 1														
Totals				44-88	15-37	25-32	19-37	22	21	128	36	0	121	6	2	6	66	
															GM FG	44-88	50.50	
															3PT	15-37	40.54	

13

San José State vs. Northern Arizona

12/19/19 at Lahaina, Hawaii



Official Basketball Box Score - Final
San Jose St. at Northern Ariz.
 12/19/19 Lahaina Civic Center, Lahaina, Maui
 2019-20 Women's Basketball

Game Time: 2:30 AM
 Game Duration: 1:49

Officials: Melissa Barlow, Teresa Turner, Corey Long

San Jose St. - 64

Record: 6-4

NO.	Name	Min	FG	3P	FT	Rebounds	Fouls	TP	AS	TO	ST	Blocks	+/-				
			M	M	M	OR	DR	FF									
15	Tyra Whitehead	26:21	5-16	0-0	2-3	4	7	11	7	12	1	2	0	-2			
00	Raziya Potter	G 30:06	3-12	0-0	3-4	3	1	4	3	2	9	3	2	0	-2		
4	Fiem'e'a Haka	G 35:29	2-9	2-5	3-4	1	4	5	2	3	9	3	2	1	0	-7	
22	Danae Marquez	G 36:01	5-17	5-8	0-0	0	2	2	3	15	4	2	3	0	0	-2	
30	Megan Anderson	G 27:40	2-8	1-6	0-0	2	2	4	0	5	2	1	2	0	0	-7	
35	Cyndi Lewis	G 22:29	4-9	0-0	2-4	1	3	4	3	10	0	4	4	0	0	5	
33	Courtney Clark	16:43	1-3	0-0	0-0	2	2	4	1	2	1	0	0	0	0	4	
13	Kalina Obrey	03:40	0-0	0-0	0-0	0	0	0	0	0	0	0	0	0	0	-1	
23	Miyah Lewis-Hampton	01:31	1-3	0-0	0-0	1	0	1	0	0	0	2	0	0	1	1	-3
Team						1	2	3				0					
Totals		23:77	8-20	10-15	13	23	36	16	17	64	14	10	17	6	1	-3	

Technical Fouls: NONE

Shooting By Period	1st FG%	2nd FG%	3rd FG%	4th FG%	GM FG%
1st FG%	4-20 20.0%				
2nd FG%	1-6 16.7%				
3rd FG%	1-2 50%				
4th FG%	4-6 66.7%				
GM FG%	1-2 50%				
3PT%	1-2 50%				
FT%	1-2 50%				
GM FG%	23-77 29.9%				
3PT%	10-15 66.7%				
FT%	10-15 66.7%				

Dead Ball Rebounds: 8, 0

Northern Ariz. - 67

Record: 3-5

NO. Name	Min	FG	3P	FT	OR	REB	TO	FOUL	PTS	TP	AS	TO	ST	Blocks	B+/-	
15 Khari'ca Rasheed	F 20:43	3-8	0-0	0-0	2	6	8	4	1	6	0	3	1	3	0	2
30 Nina Radford	26:15	5-7	2-3	8-8	2	4	1	4	20	1	3	0	1	1	7	
3 Caitlin Malvar	G 35:24	0-5	0-2	2-2	1	9	10	2	1	2	3	2	1	0	0	-3
11 Jacey Bailey	G 35:53	4-11	1-5	3-4	1	6	7	1	3	12	1	3	1	0	0	4
20 Lauren Orndoff	G 26:35	6-10	0-2	3-4	2	2	4	1	4	15	1	4	0	0	9	
1 Regan Schenck	25:26	0-2	0-0	2-4	0	6	6	3	2	3	6	1	0	0	-3	
33 Peyton Carroll	15:48	4-8	0-0	0-2	1	2	3	1	8	0	1	0	0	1	-10	
4 Morgan Gary	06:17	1-3	0-0	0-0	0	2	2	2	2	1	0	0	0	2	1	
25 Brianna Lahew	04:35	0-0	0-0	0-0	0	1	1	0	0	0	0	0	0	0	-1	
42 Molly Rohrer	02:54	0-1	0-0	0-0	0	0	0	1	0	0	0	0	0	0	-5	
Team					3	2	5				0					
Totals	23:55	3-12	1-2	12-24	12	38	50	17	16	67	11	21	6	1	6	3

Technical Fouls: NONE

Shooting By Period	1st FG%	2nd FG%	3rd FG%	4th FG%	GM FG%
1st FG%	11-18 61.1%				
2nd FG%	3-12 25.0%				
3rd FG%	6-14 42.9%				
4th FG%	0-0 0%				
GM FG%	5-15 33.3%				
3PT%	1-5 20.0%				
FT%	7-8 87.5%				
GM FG%	18-24 75.0%				
3PT%	3-12 25.0%				
FT%	18-24 75.0%				

Dead Ball Rebounds: 3, 0

	SJS	NAU
Biggest lead	7 (1st 9:47)	18 (1st 6:40)
Best Scoring Run	3 (2nd 5:21)	15 (1st 6:40)
Lead Changes	1	
Times Tied	1	
Time with Lead	00:51	38:56

Points from	SJS	NAU
Turnovers	19	17
Paint	24	36
Second Chance	8	17
Fast Breaks	15	11
Bench	14	12

Period by Period Scoring	1st	2nd	3rd	4th	TOT
SJS	10	21	16	17	64
NAU	26	12	18	11	67

14

San José State at New Mexico

1/1/20 at Albuquerque, N.M.



Official Basketball Box Score - Final
San Jose St. at New Mexico
 01/02/20 Dreamstyle Arena (The Pit), Albuquerque, N.M.
 2019-20 Women's Basketball

Game Time: 2:00 AM
 Game Duration: 1:40
 Attendance: 4,918

Officials: Michel Murray, Lisa Jones, InFire Robinson

San Jose St. - 81

Record: 9-5 (3-0)

NO.	Name	Min	FG	3P	FT	Rebounds	Fouls	TP	AS	TO	ST	Blocks	+/-				
15	Tyra Whitehead	F 30:07	1-7	0-0	1-2	2	7	9	4	3	3	4	2	0	0	4	
0	Raziya Potter	G 18:12	3-7	1-2	5-6	2	2	4	4	3	12	4	2	0	0	3	
3	Ayzhana Basallo	G 35:06	7-12	3-4	2-2	1	3	1	2	19	5	6	1	0	1	4	
4	Fiem'e'a Haka	G 29:33	6-13	0-3	1-1	1	1	2	1	3	13	2	5	4	0	1	3
30	Megan Anderson	G 32:14	7-12	6-11	0-0	1	4	5	2	1	20	0	2	1	0	0	4
22	Danae Marquez	24:40	5-9	4-7	0-0	4	4	0	0	14	3	2	4	0	0	0	4
35	Cyndi Lewis	14:42	0-2	0-1	0-0	0	0	0	1	1	0	1	0	1	0	1	-8
23	Miyah Lewis-Hampton	01:28	0-0	0-0	0-0	0	1	1	0	0	0	0	1	0	1	0	1
33	Courtney Clark	11:38	0-2	0-1	0-0	3	3	2	0	0	0	1	1	1	0	0	4
13	Kalina Obrey	02:20	0-0	0-0	0-0	1	1	0	0	0	0	0	0	0	0	0	-2
Team						2	2	4				0					
Totals		29:64	14-29	9-11	10	26	36	15	13	81	20	21	14	2	3	1	

Technical Fouls: NONE

Shooting By Period	1st FG%	2nd FG%	3rd FG%	4th FG%	GM FG%
1st FG%	6-13 46.2%				
2nd FG%	5-15 33.3%				
3rd FG%	1-1 100%				
4th FG%	12-19 63.2%				
GM FG%	5-11 45.5%				
3PT%	6-8 75%				
FT%	6-17 35.3%				
GM FG%	3-5 60.0%				
3PT%	2-2 100%				
FT%	29-64 45.3%				
GM FG%	14-29 48.3%				
FT%	9-11 81.8%				

Dead Ball Rebounds: 1, 1

New Mexico - 80

Record: 9-7 (3-3)

NO. Name	Min	FG	3P	FT	Reb	Ass	PF	TP	AS	TO	ST	Blocks	+/-			
5 Jordan Hosey	F 25:20	6-8	0-0	4-5	4	7	11	3	6	16	2	0	1	1	0	15
32 Antonia Anderson	F 36:06	9-15	2-3	3-3	1	3	4	2	2	23	2	2	1	2	1	-4
3 Alise Hurst	G 34:00	6-19	5-17	0-0	0	2	2	1	1	17	3	1	3	0	0	4
4 Jayla Everett	G 30:51	3-14	2-7	3-4	2	4	6	4	3	11	4	2	0	1	-4	0
15 Alisa Roberts	G 31:09	1-5	0-1	0-0	0	2	2	0	0	2	13	6	4	0	0	5
23 Jazdyn De La Cerdia	19:42	2-6	1-4	0-0	0	0	0	1	1	5	1	1	0	0	-6	0
24 Autumn Watts	12:47	1-4	0-0	0-0	4	3	7	1	0	2	1	1	0	0	-7	0
1 Corina Carter	04:18	0-0	0-0	0-0	0	1	1	1	0	1	1	0	0	0	-2	0
13 Shaquell McGruder	05:47	2-2	0-0	0-0	0	2	2	0	1	4	0	1	0	0	-6	0
Team					5	1	6	0				0				
Totals		30-73	10-32	10-12	16	25	41	13	15	80	27	16	12	3	2	1

Technical Fouls: NONE

Shooting By Period	1st FG%	2nd FG%	3rd FG%	4th FG%	GM FG%
1st FG%	9-22 40.9%				
2nd FG%	3-6 50.0%				
3rd FG%	7-20 35.0%				
4th FG%	1-9 11.1%				
GM FG%	1-9 11.1%				
3PT%	1-6 16.7%				
FT%	4-8 50.0%				
GM FG%	7-16 43.8%				
3PT%	1-6 16.7%				
FT%	4-8 50.0%				
GM FG%	5-15 33.3%				
3PT%	3-4 75%				
FT%	30-73 41.1%				
GM FG%	10-32 31.3%				
FT%	10-12 83.3%				

Dead Ball Rebounds: 2, 1

	SJSU	UNM
Biggest lead	6 (3rd 0:00)	15 (2nd 3:18)
Best Scoring Run	9 (3rd 3:17)	8 (1st 5:20)
Lead Changes	5	
Times Tied	7	
Time with Lead	10:14	26:37

Points from	SJSU	UNM
Turnovers	17	31
Paint	22	36
Second Chance	6	17
Fast Breaks	14	17
Bench	14	11

Period by Period Scoring	1st	2nd	3rd	4th	TOT
SJSU	16	13	35	17	81
UNM	24	15	19	22	80

15

Fresno State at San José State

1/4/20 at San José, Calif.



Official Basketball Box Score - Final
Fresno State at San Jose State
 01/04/20 Providence Credit Union Event Center, San Jose, CA
 2019-20 Women's Basketball

Game Time: 10:00 PM
 Game Duration: 2:38
 Attendance: 522

Officials: Michael Price, Jerry Outley, Janetta Graham

Fresno State - 85

Record: 11-4 (4-0)

NO.	NAME	MIN	FG	3P	FT	REBOUNDS	FOULS	TP	AS	TO	ST	BLOCKS	+/-				
						OR	TR										
11	Maddi Uiti	F 45:00	8-19	0-2	2-4	6	9	15	1	5	18	6	3	3	0	9	
24	Wryllia Motta	F 20:10	2-8	0-0	3-4	3	2	5	4	3	7	0	0	0	1	0	
0	Hanna Cavinder	G 43:06	9-14	2-4	4-5	0	1	1	1	3	24	3	4	1	0	19	
1	Haley Cavinder	G 42:50	5-18	0-8	2-2	0	15	15	2	9	12	3	0	1	0	7	
14	Jacey Bailey	G 38:13	4-9	1-3	7-8	1	4	5	1	5	16	5	2	0	0	1	10
22	Jordanna Porter	02:26	0-2	0-0	0-0	0	0	0	0	0	0	0	0	0	0	-10	
15	Brooke Walling	13:08	1-3	0-0	1-1	4	3	7	2	3	1	0	0	1	0	2	1
3	Kennedy Kinzer	17:31	1-5	0-2	0-0	0	4	4	0	0	2	0	0	0	1	5	5
12	Jenna Ogier	03:25	1-2	0-0	1-1	0	0	0	1	3	0	0	0	0	0	2	0
20	Bree Delaney	00:01	0-0	0-0	0-0	0	0	0	0	0	0	0	0	0	0	0	0
Totals			31-80	3-21	20-25	17	40	57	12	23	85	18	11	5	2	5	9

17

San José State at Colorado State
1/11/20 at Fort Collins, Colo.

18

UNLV at San José State
1/15/20 at San José, Calif.



Official Basketball Box Score - Final
San Jose State at Colorado State
01/11/20 Moby Arena, Fort Collins
2019-20 Women's Basketball

Game Time: 5:00 PM
Game Duration: 1:46
Attendance: 1,066

Officials: Randy Campbell, Tiffany Jump, Rick Thorne

San Jose State - 58

Record: 11-6 (5-1)

NO. Name	Min	FG M-A	3P M-A	FT M-A	Rebounds OR DR TOT	Fouls PF FD	TP	AS	TO	ST	Blocks BS BA	+/-
15 Tyra Whitehead	F 22:25	1-6	0-0	0-0	2 8 10	4 1 2	1	3	4	0	0	-2
00 Raziyra Potter	G 27:10	7-13	1-5	4-6	0 10 10	3 3 19	3	7	1	1	0	4
3 Ayzhiana Basallo	G 34:20	9-20	2-7	6-6	1 1 2	3 4 26	1	2	1	0	0	11
4 Fiem'e'a Hafoka	G 29:48	1-3	0-2	2-2	0 1 1	3 3 4	0	2	1	0	1	1
30 Megan Anderson	G 31:40	1-7	1-4	0-0	0 6 6	1 0 3	0	0	0	0	0	4
35 Cydni Lewis	22:29	2-5	0-1	0-0	1 8 9	2 2 4	0	1	1	1	0	12
22 Danae Marquez	21:15	0-1	0-1	0-0	0 0 0	1 1 0	1	1	0	0	0	2
33 Courtney Clark	10:36	0-0	0-0	0-0	0 1 1	0 0 0	0	1	0	0	0	-5
13 Kalina Obrey	00:17	0-0	0-0	0-0	0 0 0	0 0 0	0	0	0	0	0	2
Team					1 2 3		0					
Totals		21-55	4-20	12-14	5 37 42	17 14 58	6	17	8	2	1	5

Technical Fouls: NONE

Shooting By Period			
1st FG%	5-11	45.5%	
3PT%	2-4	50.0%	
FT%	0-0	0%	
2nd FG%	4-17	23.5%	
3PT%	0-6	0.0%	
FT%	2-2	100%	
3rd FG%	7-14	50.0%	
3PT%	2-5	40.0%	
FT%	2-4	50%	
4th FG%	5-13	38.5%	
3PT%	0-5	0.0%	
FT%	8-8	100%	
GM FG%	21-55	38.2%	
3PT%	4-20	20.0%	
FT%	12-14	85.7%	

Dead Ball Rebounds: 1, 2

Colorado State - 53

Record: 9-8 (2-3)

NO. Name	Min	FG M-A	3P M-A	FT M-A	Rebounds OR DR TOT	Fouls PF FD	TP	AS	TO	ST	Blocks BS BA	+/-
3 Megan Jacobs	F 35:16	1-4	0-2	0-0	0 5 5	1 0 2	1	1	1	0	0	-7
11 Makenzie Ellis	F 37:10	8-16	0-1	4-9	0 3 3	5 8 20	2	3	2	0	0	-5
12 Jamie Bonnarens	F 35:12	2-9	1-7	2-2	0 0 0	1 1 7	1	1	0	0	0	-5
32 Annie Brady	F 32:58	5-18	0-0	0-0	10 13 23	2 3 10	4	2	1	1	2	-4
2 Tori Williams	G 36:50	3-13	3-13	3-4	0 4 4	2 5 12	5	3	4	0	0	-3
21 Myanne Hamm	13:00	0-5	0-4	0-0	0 1 1	2 0 0	1	1	1	0	0	-2
35 Lore Devos	09:34	1-2	0-0	0-0	1 1 2	1 0 2	1	0	0	0	0	1
Team					1 3 4		0					
Totals		20-67	4-27	9-15	12 30 42	14 17 53	15	11	9	1	2	-5

Technical Fouls: NONE

Shooting By Period			
1st FG%	8-18	44.4%	
3PT%	1-7	14.3%	
FT%	1-2	50%	
2nd FG%	5-15	33.3%	
3PT%	0-7	0.0%	
FT%	3-4	75%	
3rd FG%	5-18	27.8%	
3PT%	3-7	42.9%	
FT%	0-0	0%	
4th FG%	2-16	12.5%	
3PT%	0-6	0.0%	
FT%	5-9	55.6%	
GM FG%	20-67	29.9%	
3PT%	4-27	14.8%	
FT%	9-15	60.0%	

Dead Ball Rebounds: 2, 0

	SJSU	CSU
Biggest lead	5 (4 th 0:14)	11 (2 nd 2:45)
Best Scoring Run	10 (4 th 5:09)	10 (2 nd 8:42)
Lead Changes	7	
Times Tied	6	
Time with Lead	08:02	25:29

	Points from	SJSU	CSU
Turnovers	8	12	
Paint	28	22	
Second Chance	0	4	
Fast Breaks	15	0	
Bench	4	2	

Period by Period Scoring					
	1st	2nd	3rd	4th	TOT
SJSU	12	10	18	18	58
CSU	18	13	13	9	53

19

New Mexico at San José State
1/22/20 at San José, Calif.

20

San José State at Air Force
1/25/20 at USAF Academy, Colo.

