



# San José State University Volleyball

Volleyball Contact: Amy Villa  
408-924-1216 - Office • 408-421-8604 Cell  
amy.villa@sjsu.edu • www.sjsuspartans.com  
For Immediate Release • November 1, 2023

## 2023 Schedule 12-13, 3-9 MW

|   |                          |            |
|---|--------------------------|------------|
| Aug. 25                                     | !CSUN                    | W, 3-2     |
| Aug 26                                      | !JACKSONVILLE            | W, 3-0     |
| Aug. 27                                     | !SANTA CLARA             | L, 3-0     |
| Sept. 1                                     | %Portland                | W, 3-1     |
| Sept. 1                                     | %at Sacramento State     | L, 3-1     |
| Sept. 2                                     | %Cal State Fullerton     | W 3-0      |
| Sept. 8                                     | &at Campbell             | W, 3-1     |
| Sept. 8                                     | &Georgia Southern        | L, 3-0     |
| Sept. 9                                     | &UTSA                    | W, 3-1     |
| Sept. 12                                    | at Saint Mary's          | W, 3-1     |
| Sept. 14                                    | ^at San Francisco        | L, 3-1     |
| Sept. 15                                    | ^CSUN                    | W, 3-0     |
| Sept. 16                                    | ^UTRGV                   | W, 3-2     |
| Sept. 21                                    | *at UNLV                 | L, 3-0     |
| Sept. 23                                    | *at San Diego State      | L, 3-1     |
| SEPT. 28                                    | *NEVADA                  | W, 3-1     |
| SEPT. 30                                    | *FRESNO STATE            | W, 3-1     |
| Oct. 5                                      | *at Wyoming              | L, 3-0     |
| Oct. 7                                      | *at Colorado State       | L, 3-0     |
| OCT. 12                                     | *BOISE STATE             | L, 3-0     |
| OCT. 14                                     | *UTAH STATE              | L, 3-0     |
| OCT. 19                                     | *NEW MEXICO              | L, 3-1     |
| Oct. 21                                     | *at Air Force            | L, 3-0     |
| Oct. 26                                     | *at Fresno State         | W, 3-2     |
| Oct. 28                                     | *at Nevada               | L, 3-2     |
| NOV. 2                                      | *COLORADO STATE          | 6 p.m.     |
| NOV. 4                                      | *WYOMING (NBCSBA)        | 12 p.m.    |
| Nov. 9                                      | *at Utah State           | 6 p.m. PT  |
| Nov. 11                                     | *at Boise State          | 11 a.m. PT |
| NOV. 14                                     | *UNLV                    | 6 p.m.     |
| NOV. 16                                     | *SAN DIEGO STATE         | 6 p.m.     |
| Nov. 22-24                                  | Mountain West Tournament |            |
| * - Mountain West match                     |                          |            |
| ! - SJSU/Santa Clara Tournament             |                          |            |
| % - Hornet Invitational, Sacramento, Calif. |                          |            |
| & - Campbell Invitational                   |                          |            |
| ^ - USF Challenge                           |                          |            |
| All home matches at Spartan Gym (1,000).    |                          |            |
| Facebook - /SJSUVolleyball                  |                          |            |
| X - @SanJoseStateVB                         |                          |            |
| Instagram - @sjsuvolleyball                 |                          |            |
| Tik Tok - @sanjosestatevb                   |                          |            |

### MATCHES 26 & 27

#### San José State (12-13, 3-9) vs. Colorado State (14-10, 8-5)



Spartan Gym, YUH Complex, San Jose, Calif.

Thursday, November 2

6:00 p.m. PT

Mountain West Network

Announcer - Ben Ross

#### San José State (12-13, 3-9) vs. Wyoming (16-8, 5-8)



Spartan Gym, YUH Complex, San Jose, Calif.

Saturday, November 4

12:00 p.m. PT

NBC Sports Bay Area/Mountain West Network

Announcers - Chris Sylvester & Jonah Malkin

Live Stats - <https://www.sjsustats.com>

Live Video - [MW Network](#)

**SPARTANS HOST RAMS & COWGIRLS:** The San José State volleyball team is looking to start November strong with home matches this week against Colorado State on Thursday and Wyoming on Saturday. This month, the team will play four of its six final regular-season matches at Spartan Gym, inside the YUH Complex on the corner of Fourth and San Carlos Streets.

San José State is currently 12-13 on the season and 3-9 in the Mountain West. The Spartans ended a six-match losing streak last week with a 3-2 win at Fresno State on October 26. The team then fell in five sets at Nevada, 3-2, on Saturday, battling back from a 2-1 deficit to send the match to a fifth set.

**LIVE STATS:** Live stats are available for all home Spartan matches and most road matches at [www.sjsustats.com](http://www.sjsustats.com).

**LIVE VIDEO:** Thursday's match will be broadcast on the Mountain West Network. Fans can access the stream on the San José State website at [www.sjsuspartans.com/watch](http://www.sjsuspartans.com/watch) or on the Mountain West App.

Saturday's match will be broadcast on NBC Sports Bay Area and streamed live on the Mountain West Network for those not in the Bay Area. Chris Sylvester handles the play-by-play duties with Jonah Malkin as the color analyst. Fans can access the stream on the Spartan website at [www.sjsuspartans.com/watch](http://www.sjsuspartans.com/watch).

### Possible Spartan Starters (as of 10/28)

|    |                    |    |      |      |          |          |           |
|----|--------------------|----|------|------|----------|----------|-----------|
| 1  | Jiana Lawson       | MB | 5-10 | SR   | 1.43 kps | 1.29 bps |           |
| 2  | Brooke Bryant      | RS | 5-11 | JR   | 2.14 kps | 0.62 bps |           |
| 5  | Laurel Barsocchini | L  |      | FR   | 1.93 dps | 0.52 aps |           |
| 6  | Nayeli Ti'a        | OH | 5-11 | R-FR | 2.77 kps | 2.13 dps | 0.52 bps  |
| 9  | Selin Ozdemir      | OH |      | FR   | 0.65 kps | 0.74 dps |           |
| 10 | Brooke Slusser     | S  | 5-11 | JR   | 6.88 aps | 2.13 dps | 0.30 saps |
| 12 | Alyssa Bjork       | MB | 6-3  | JR   | 1.02 kps | 0.57 bps |           |

-CON.-

**TICKETS:** Admission is free to all San José State volleyball home matches.

**ABOUT COLORADO STATE:** The Rams enter Thursday’s match with a 14-10 overall record and 8-5 MW mark after defeating Wyoming, 3-1, at home Tuesday night. The team is in third place in the MW standings, half a game in front of Fresno State and Boise State. Head coach Emily Kohan is in her first season at the helm of the program but has been an assistant and associate head coach with the Rams since 2015.

**Colorado State’s Leaders**

|         |               |                  |
|---------|---------------|------------------|
| Hit %   | .423          | Naeemah Weathers |
| Kills   | 315, 3.35 ps  | Malaya Jones     |
| Assists | 976, 10.17 ps | Emery Herman     |
| Aces    | 26, 0.27 ps   | Emery Herman     |
| Digs    | 326, 3.40 ps  | Kate Yoshimoto   |
| Blocks  | 88, 0.92 ps   | Naeemah Weathers |

**Series Record** - Colorado State leads 19-9

**First Meeting** - W, 3-1, September 20, 1984, Spartan Gym

**Last Meeting** - L, 3-0, October 7, 2023, Fort Collins, Colo.

**Last SJSU Win** - 3-1, November 3, 2022, Spartan Gym

**Current Streak** - L1

**Last 10 meetings** -3-8

**Earlier Meeting:** The Spartans got 12 kills from **Nayeli Ti’a** in the team’s 3-0 loss to the Rams on October 7. **Alessia Buffagni** led the team with eight digs, while **Brooke Slusser** had 17 assists, five kills and seven digs in the match

**ABOUT WYOMING:** The Cowgirls enter Saturday’s match with a 16-8 overall record and 5-8 MW mark. The team is in eighth place in the MW standings, just one win from sixth place and a spot in the MW Tournament. Head coach Kaylee Prigge is in her first season at the helm of the Wyoming program after serving as the associate head coach the past two seasons.

**Wyoming’s Leaders**

|         |               |                                 |
|---------|---------------|---------------------------------|
| Hit %   | .382          | Tierney Barlow                  |
| Kills   | 286, 3.29 ps  | Rylee Schulz                    |
| Assists | 934, 10.74 ps | Kasia Partyka                   |
| Aces    | 25, 0.29 ps   | Skylar Erickson, Tierney Barlow |
| Digs    | 234, 2.69 ps  | Skylar Erickson                 |
| Blocks  | 99, 1.14 ps   | Tierney Barlow, Sarah Holcomb   |

**Series Record** - Wyoming leads 15-8

**First Meeting** - W, 3-0, October 1, 1983, Berkeley, Calif.

**Last Meeting** - L, 3-0, October 5, 2023, Laramie, Wyo.

**Last SJSU Win** - 3-1, November 5, 2022, Spartan Gym

**Current Streak** - L1

**Last 10 meetings** -4-6

**Earlier Meeting:** The Spartans fell 3-0 in Laramie to start the month of October. **Letizia Cammillucci** and **Nayeli Ti’a** each had 11 kills in the match.

**HEAD COACH TODD KRESS:** San José State head coach **Todd Kress** is in his first season at the helm of the program. He came to San José State after two coaching stints at Fairfield University where the program to five NCAA Tournament appearances.

Kress is in his 28th year as a head coach with a 529-327 coaching record. He is currently 24th in the NCAA among active head coaches with his 529 wins.



**2023 Mountain West Standings (through 10/31)**

| Team                  | Conference |          |             | Overall   |           |             |
|-----------------------|------------|----------|-------------|-----------|-----------|-------------|
|                       | W          | L        | PCT         | W         | L         | PCT         |
| Utah State            | 11         | 1        | .917        | 18        | 5         | .782        |
| New Mexico            | 8          | 4        | .667        | 16        | 7         | .696        |
| Colorado State        | 8          | 5        | .615        | 14        | 10        | .583        |
| Fresno State          | 7          | 5        | .583        | 13        | 10        | .565        |
| Boise State           | 7          | 5        | .583        | 11        | 11        | .500        |
| Air Force             | 6          | 6        | .500        | 14        | 9         | .609        |
| UNLV                  | 6          | 6        | .500        | 15        | 10        | .583        |
| Wyoming               | 5          | 8        | .384        | 16        | 8         | .667        |
| <b>San José State</b> | <b>3</b>   | <b>9</b> | <b>.250</b> | <b>12</b> | <b>13</b> | <b>.480</b> |
| San Diego State       | 3          | 9        | .250        | 8         | 15        | .348        |
| Nevada                | 3          | 9        | .250        | 7         | 16        | .304        |

**Upcoming Schedule**

**Tuesday, October 31**

at Colorado State\* def. Wyoming .....3-1

**Thursday, November 2**

Nevada at San Diego State\* (MWN)..... 6 p.m. PT  
 Colorado State at San José State\* (MWN) ..... 6 p.m. PT  
 New Mexico at Boise State\* (MWN).....7 p.m. MT  
 Air Force at Utah State\* (MWN).....7 p.m. MT  
 Fresno State at UNLV\* (MWN)..... 6:30 p.m. PT

**Saturday, November 4**

Air Force at Boise State\* (MWN).....Noon MT  
 New Mexico at Utah State\* (MWN).....1 p.m. MT  
 Wyoming at San José State\* (MWN)..... Noon PT  
 Fresno State at San Diego State\* (MWN)..... 12:30 p.m. PT  
 Nevada at UNLV\* (MWN) ..... 1 p.m. PT

**LAWSON AMONG NATIONAL LEADERS IN BLOCKING:** Senior **Jiana Lawson** continues to make her presence known along the net as she ranks 11th nationally in total blocks with 120. She is 32nd in blocks per set at 1.29 ps.

**NATIONAL RANKINGS:** The Spartans find themselves among the top-100 statistical leaders in five categories.

**Team (top-50 rankings)**

|                 |      |          |
|-----------------|------|----------|
| Team Blocks     | 52nd | 210.0    |
| Total Attacks   | 53rd | 3,273    |
| Team Kills      | 60th | 1,188    |
| Team Assists    | 60th | 1,006    |
| Attacks per set | 98th | 35.19 ps |

**WE LIKE EXTRA SETS:** This season, the Spartans have played 14 matches that have taken at least four sets. San Jose State is 6-4 in four-set matches and a 3-1 in five-set contests. The team played two five-set matches last week, winning at Fresno State on Thursday but falling at Nevada on Saturday.

**SCARY OCTOBER:** The Spartans did not collect many treats in October as the team finished the month 1-7 in Mountain West play. The only win of the month came on the 26th as the team won 3-2 at Fresno State.

**BARSOCCHINI MAKES LIBERO DEBUT:** After playing the final set as the team's libero at Air Force on October 21, freshman Laurel Barsocchini made her first libero start at Fresno State on October 26. In that match, she recorded 21 digs, six assists and an ace. She was also perfect in serve-receive in 24 attempts. At Nevada, she had 14 digs, six assists and a season-high three service aces.

**DOUBLE-DOUBLES:** Through 25 matches, five Spartans have recorded 17 double-doubles this season. **Brooke Slusser** and **Nayeli Ti'a** each have five double-doubles, followed by **Letizia Cammillucci** with four double-doubles, **Teya Nguyen** with two and **Alessia Buffagni** and with her first collegiate double-double.

**SLUSSER WITH NEAR TRIPLE-DOUBLE:** In the 3-1 win over Nevada on September 28, setter **Brooke Slusser** needed just one more dig to record a triple-double. She had a career-high 11 kills and added 35 assists for her second double-double of the season. She ended the night with nine digs, needing just one more to record the first Spartan triple-double since 2009.

**11 WILD: Jiana Lawson** recorded 11 blocks, one solo and 10 assists, in the four-set win over Portland on September 1. She became the 11th Spartan in school history to record 11 blocks in a match. It marked the 12th time that 11 blocks were recorded in school history.

**DOUBLE-DOUBLE BY WHO?!** Not the position player who usually gets a double-double, libero **Alessia Buffagni** recorded her first career double-double against Fresno State with 10 assists and 16 digs. She is the third consecutive Spartan libero to record a double-double in her career as Sarah Smevog did it during the 2022 season and Luiza Andrade had one against Long Beach State during the 2016 season.

**20+ DIGS A COMMON THEME:** Six times this season, a Spartan has recorded 20 or more digs in a match. **Alessia Buffagni** has recorded 20 or more digs in five matches, while **Laurel Barsocchini** did it for the first time with 21 at Fresno State on October 26.

Buffagni started the season with 25 digs at Campbell, followed by 22 digs against UTSA while playing at Campbell, 20 digs against UTRGV in San Francisco, 20 digs at San Diego State and 27 digs in a home match with New Mexico. She is just the seventh person in school history to record 27 digs in a match and just the eighth time it happened.

**FRESHMEN MAKING AN IMPACT ON SPARTAN SQUAD:** This year's Spartan squad features 10 freshmen or redshirt freshmen. Nine of them have played in at least one match this season. Leading the class has been **Nayeli Ti'a** who leads the team with 255 kills, 2.77 ps, and is third on the team in blocks with

### Double-Figure Club

| Player         | Kills | Digs | Blks | Pts |
|----------------|-------|------|------|-----|
| #1 Lawson      | 1     | --   | 1    | 9   |
| #2 Bryant      | 6     | --   | --   | 11  |
| #3 Fleming     | 11    | --   | --   | 12  |
| #4 Barsocchini | --    | 2    | --   | --  |
| #5 Cammillucci | 11    | 6    | --   | 15  |
| #6 Ti'a        | 10    | 8    | --   | 16  |
| #9 Ozdemir     | 1     | --   | --   | 1   |
| #10 Slusser    | --    | 4    | --   | 1   |
| #11 Lawton     | --    | --   | --   | --  |
| #12 Bjork      | --    | --   | --   | 1   |
| #13 Patterson  | --    | --   | --   | --  |
| #16 Buffagni   | --    | 18   | --   | --  |
| #20 Budak      | --    | --   | --   | --  |
| #21 Nguyen     | --    | 2    | --   | --  |

### Double-Doubles (17)

**#5 Letizia Cammillucci** **4/7 career**  
 10k, 10d, at Sacramento State, Sept. 1  
 12k, 10d, vs. UTRGV, Sept. 16  
 16k, 11d, at San Diego State, Sept. 23  
 13k, 13d, vs. New Mexico, Oct. 19

**#6 Nayeli Ti'a** **5/5 career**  
 24k, 11d, vs. CSUN, Aug. 25  
 16k, 18d, at Campbell, Sept. 8  
 18k, 13d, vs. New Mexico, Oct. 19  
 17k, 10d, at Fresno State, Oct. 26  
 15k, 11d, at Nevada, Oct. 28

**#16 Alessia Buffagni** **1/1 career**  
 10a, 16d, vs. Fresno State, Sept. 30

**#10 Brooke Slusser** **5/5 SJSU career/14 total career**  
 47a, 18d, vs. CSUN, Aug. 25  
 11k, 35a, vs. Nevada, Sept. 28  
 26a, 14d, vs. Fresno State, Sept. 30  
 26a, 10d, at Fresno State, Oct. 26  
 40a, 11 digs, at Nevada, Oct. 28

**#21 Teya Nguyen** **2/2 career**  
 13a, 11d, vs. Portland, Sept. 1  
 11a, 12d, at Fresno State, Oct. 26

### All-Tournament Team Honors

|   |                  |
|---|------------------|
| San José State/Santa Clara Invitational | Nayeli Ti'a      |
| San José State/Santa Clara Invitational | Blaire Fleming   |
| Hornet Invitational                     | Jiana Lawson     |
| Hornet Invitational                     | Blaire Fleming   |
| Campbell Invitational                   | Nayeli Ti'a      |
| Campbell Invitational                   | Alessia Buffagni |

48, 0.52 ps. She started the season with 24 kills in the win over CSUN and led the team in kills the past two matches. Twice this season, she has received MW Freshman of the Week honors.

**Teya Nguyen** has seen significant time at setter and defensive specialist. She is averaging 3.93 assists ps, 1.76 digs ps and 0.29 aces per set. Nguyen was named the MW Freshman of the Week after her performances in the three match at the Hornet Invitational.

**Laurel Barsocchini** was the team's libero the past two matches. She had 21 digs in the team's win at Fresno State and averaged 3.50 digs, 1.20 assists and 0.40 aces ps in her two matches as the starting libero.

**BROOKE & BROOKE SHOW:** The Brooke & Brooke show was in full effect in the team's 3-1 win over Nevada on September 28. **Brooke Bryant** led the team with a career-best 16 kills and hit a team-high .481 for th match. **Brooke Slusser** nearly recorded a triple-double with 11 kills on 23 attempts and 35 assists. She added nine digs in the win.

**20-KILL PLATEAU:** Three times this season, a Spartan hitter has recorded 20 or more kills in a match. **Nayeli Ti'a** the season by recording 24 in the win over CSUN. **Blaire Fleming** has the other two 20+ kill matches for SJSU.  
 24 - Nayeli Ti'a, vs. CSUN, 8/25  
 22 - Blaire Fleming, at Saint Marys, 9/12  
 21 - Blaire Fleming, vs UTRGV, 9/16

**MOUNTAIN WEST HONORS:** This season, three Spartans have earned four Mountain West of the Week honors. **Teya Nguyen** started award winning with her Freshman of the Week recognition on September 4. **Nayeli Ti'a** has won the Freshman of the Week honor twice - September 11 and October 2. **Alessia Buffagni** won her first MW Defensive Player of the Week honor on October 2.

**SPARTANS HONORED BY MW:** **Alessia Buffagni** and **Nayeli Ti'a** were honored on October 2 as the Mountain West Defensive and Freshman Player of the Week, respectively.

Buffagni averaged 4.25 digs and 1.63 assists per set and had her first collegiate double-double with 10 assists and 16 digs in the win over Fresno State.

Ti'a averaged 2.88 kills, 1.25 digs and 3.38 points per set in the team's two wins. She had 14 kills in the win over Fresno State.

**UP NEXT:** Next week, San José State goes on the road for the final two home matches of the year. The Spartans play at MW leader Utah State on Thursday the 9th at 7 p.m. MT/6 p.m. PT, followed by a Saturday match at Boise State beginning at 12 p.m. MT/11 a.m. PT.

**The Last Time San José State....**

|                                   |  |
|-----------------------------------|--|
| Won a match .....                 | at Fresno State, 10/26/23              |
| Lost a match .....                | at Nevada, 10/28/23                    |
| Won at home.....                  | vs. Fresno State, 9/30/23              |
| Lost at home .....                | vs. New Mexico, 10/19/23               |
| Won on the road .....             | at Fresno State, 10/26/23              |
| Lost on the road .....            | at Nevada, 10/28/23                    |
| Won 3-0.....                      | vs. CSUN, 9/15/23                      |
| Lost 3-0.....                     | at Air Force, 10/21/23                 |
| Won 3-0 at home .....             | vs. Jacksonville, 8/26/23              |
| Lost 3-0 at home.....             | vs. Utah State, 10/14/23               |
| Won 3-0 on the road .....         | vs. CSUN, 9/15/22                      |
| Lost 3-0 on the road .....        | at Air Force, 10/21/23                 |
| Won in four sets .....            | vs. Fresno State, 9/30/23              |
| Lost in four sets .....           | vs. New Mexico, 10/13/23               |
| Won in five sets .....            | at Fresno State, 10/26/23              |
| Lost in five sets .....           | at Nevada, 10/28/23                    |
| Defeated a MW opponent.....       | at Fresno State, 10/26/23              |
| Lost to a MW opponent .....       | at Nevada, 10/28/23                    |
| Defeated a nationally-ranked team |  |
| .....                             | vs. #19 Colorado State (3-2), 11/11/17 |
| Current Streak.....               | L1 (10/28)                             |



**The Spartans on Social Media  
Volleyball**

Facebook - /SJSUVolleyball  
 X - @SanJoseStateVB  
 Instagram - @sjsuvolleyball  
 Tik Tok - @sanjosestatevb

**Athletics Department**

Facebook - /SJSUspartans  
 X - @SJSUAthletics  
 Instagram - @sjsuspartans

**MW Offensive Player of the Week**

Aug. 28 Paige Bartsch, Jr., Opp, Boise State  
 Sept. 4 Kasia Partyka, Jr., S, Wyoming  
 Sept. 11 Uxue Guereca, Sr., OH, New Mexico  
 Sept. 18 Isabel Martin, Sr., OH, UNLV  
 Sept. 26 Paige Bartsch, Jr., Opp, Boise State  
 Oct. 2 Malaya Jones, Jr., OH/OPP, Colorado State  
 Oct. 9 Uxue Guereca, Sr., OH, New Mexico  
 Oct. 16 Malaya Jones, Jr., Opp, Colorado State  
 Oct. 23 Brooke Cowie, Jr., S, Fresno State  
 Oct. 30 Adna MEhmedovic, Jr., OH, Utah State  
 Nov. 6  
 Nov. 13  
 Nov. 20

**MW Defensive Player of the Week**

Aug. 28 Angela Crosetti, Gr., L, New Mexico  
 Sept. 4 Skylar Erickson, So., DS, Wyoming  
 Sept. 11 Jordan Suan, So., L, Air Force  
 Sept. 18 Breanna Mitchell, So., L, Boise State  
 Sept. 26 Kambree Rodriquez, Fr., L, Utah State  
**Oct. 2 Alessia Buffagni, Jr., L, San José State**  
 Oct. 9 Bella McGirr, So., L, Boise State  
 Oct. 16 Kambree Rodriquez, Fr., L, Utah State  
 Oct. 23 Shelby Capllonch, Gr., OH, Utah State  
 Oct. 30 Jordyn Freeman, Sr., MB, UNLV  
 Nov. 6  
 Nov. 13  
 Nov. 20

**MW Freshman of the Week**

Aug. 28 Tehya Maeva, L, Nevada  
**Sept. 4 Teya Nguyen, S/DS, San José State**  
**Sept. 11 Nayeli Ti'a, OH, San José State**  
 Sept. 18 Caleigh King, L, UNLV  
 Sept. 26 Kambree Rodriquez, L, Utah State  
**Oct. 2 Nayeli Ti'a, OH, San José State**  
 Oct. 9 Sierra Grizzle, L/DS, Wyoming  
 Oct. 16 Kambree Rodriquez, L, Utah State  
 Oct. 23 Dionii Fraga, L, Fresno State  
 Oct. 30 Kambree Rodriquez, L, Utah State  
 Nov. 6  
 Nov. 13  
 Nov. 20

**MW Statistics (All Matches)**

Kills - 3rd ..... Blaire Fleming, 3.86 ps  
 Assists - 9th ..... Brooke Slusser 6.88 ps  
 Digs - 6th ..... Alessia Buffagni, 3.66 ps  
 Blocks - 1st ..... Jiana Lawson, 1.29 ps  
 Points - 3rd ..... Blaire Fleming , 4.15 ps

**MW Statistics (MW Matches)**

Kills - 6th ..... Letizia Cammillucci, 3.39 ps  
 Assists - 8th ..... Brooke Slusser 7.23 ps  
 Digs - 5th ..... Alessia Buffagni, 3.46 ps  
 Blocks - 5th ..... Jiana Lawson, 1.16 ps  
 Points - 5th ..... Letizia Cammillucci , 3.93 ps

## 2023 San José State Volleyball Roster

| NO | NAME                | POS   | HT   | YR     | HOMETOWN/LAST SCHOOL                                      |
|----|---------------------|-------|------|--------|---|
| 1  | Jiana Lawson        | MB    | 5-10 | SR     | Tucson, Ariz./Portland/Southern Arizona VB Academy        |
| 2  | Brooke Bryant       | RS    | 5-11 | JR     | Irvine, Calif./Santa Margarita HS/A4Volley                |
| 3  | Blaire Fleming      | OH/RS | 6-1  | R-JR   | Aldie, Va./Coastal Carolina/Virginia Juniors              |
| 4  | Laurel Barsocchini  | DS/L  | 5-6  | FR     | Westlake Village, Calif./Agoura HS/Legacy VBC             |
| 5  | Letizia Cammillucci | OH/RS | 5-11 | SR     | Padova, Italy/Liceo Amedeo di Savoia Duca D'aosta         |
| 6  | Nayeli Ti'a         | OH    | 5-11 | R-FR   | Livermore, Calif./Granada HS/Vision VBC                   |
| 8  | Lauren Conroy       | DS/L  | 5-5  | SR     | Naperville, Ill./Neuqua Valley HS/Sports Performance      |
| 9  | Selin Özdemir       | OH    | 6-0  | FR     | Cankaya-Ankara, Turkey/TED Ankara Koleji                  |
| 10 | Brooke Slusser      | S     | 5-11 | JR     | Denton, Texas/Alabama/Texas Advantage VB                  |
| 11 | Mari Lawton         | MB    | 6-0  | FR     | Mililani, Hawaii/Iolani HS/Ku'ikahi VBC                   |
| 12 | Alyssa Bjork        | MB    | 6-3  | JR     | Huntington Beach, Calif./Huntington Beach HS/Unity VBC    |
| 13 | Elle Patterson      | L/OH  | 6-0  | FR     | Brownsburg, Ind./Tri-West HS/Rev Volleyball Academy       |
| 14 | Jade Middleborn     | MB    | 5-11 | FR     | San Diego, Calif./San Marcos HS/Rancho Valley VBC         |
| 16 | Alessia Buffagni    | L/DS  | 5-6  | JR     | Castelnuovo Rangone, Italy/Villa D'Oro Pallavolo Modena   |
| 19 | Ava Roodbol         | S     | 5-11 | FR     | Toronto, Ontario, Canada/Bayview Glen School/Mountain VBC |
| 20 | Sude Budak          | OH    | 6-1  | FR     | Istanbul, Turkey/Mustafa Kemal Anatolian HS               |
| 21 | Teya Nguyen         | S     | 5-9  | FR     | San Jose, Calif./Valley Christian HS/Vision VBC           |
| 25 | Halen Kiefer        | DS/L  | 5-9  | FR     | Placentia, Calif./El Dorado HS/Balboa Bay VBC             |
| 33 | Yazmin Pitpit       | MB    | 6-2  | 5th Yr | San Diego, Calif./Scripps Ranch HS/Wave VBC               |

**HEAD COACH:** Todd Kress (Cincinnati, 1992; 1st season)

**ASSOCIATE HEAD COACH:** Melissa Batie-Smoose (Southern Mississippi, 1991; 1st season)

**ASSISTANT COACH:** Alan Segal (Sacramento State; 1st season)

**ASSISTANT COACH:** Gary Hodge (Cal State Easy Bay; 1st season)

**VOLUNTEER ASSISTANT COACH:** Julian Abreu (San José State, 2022; 1st season)

### Pronunciation Guide

Laurel Barsocchini – BAR-soo-chee-nee

Alyssa Bjork – BEE-york

Sude Budak – SOO-dah BOO-dack

Alessia Buffagni – uh-LESS-ee-uh BOO-fawn-ye

Letizia Cammillucci – luh-TEE-zee-uh Cam-uh-LOO-chee

Jiana Lawson – GEE-on-ah

Mari Lawton – MAR-ee

Teya Nguyen – TAY-yuh NEW-win

Selin Özdemir – SAY-lin ohz-DAY-meersh

Elle Patterson -ELLE (like the magazine)

Ava Roodbol – ROAD-ball

Yazmin Pitpit – YAZZ-min

Nayeli Ti'a – NIGH-ah-lee TEE-uh



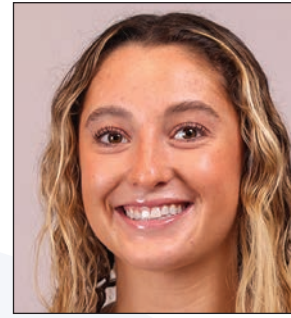
**1**  
**Jiana Lawson**  
MB • 5-10 • SR  
Tucson, Ariz.



**2**  
**Brooke Bryant**  
MB • 5-11 • JR  
Rancho Santa Margarita, Calif.



**3**  
**Blaire Fleming**  
OH/RS • 6-1 • R-JR  
Aldie, Va.



**4**  
**Laurel Barsocchini**  
DS/L • 5-6 • FR  
Westlake Village, Calif.



**5**  
**Letizia Cammillucci**  
OH • 5-11 • SR  
Padova, Italy



**6**  
**Nayeli Ti'a**  
OH • 5-11 • R-FR  
Livermore, Calif.



**8**  
**Lauren Conroy**  
L/DS • 5-5 • SR  
Naperville, Ill.



**9**  
**Selin Ozdemir**  
OH • 6-0 • FR  
Cankaya-Ankara, Turkey



**10**  
**Brooke Slusser**  
S • 5-11 • JR  
Denton, Texas



**11**  
**Mari Lawton**  
MB • 6-0 • FR  
Mililani, Hawaii



**12**  
**Alyssa Bjork**  
MB • 6-3 • JR  
Huntington Beach, Calif.



**13**  
**Elle Patterson**  
L/OH • 6-0 • FR  
Brownsburg, Ind.



**14**  
**Jade Middleborn**  
MB • 5-11 • FR  
San Diego, Calif.



**16**  
**Alessia Buffagni**  
L • 5-6 • JR  
Castelnuovo Rangone, Italy



**19**  
**Ava Roodbol**  
S • 5-11 • FR  
Toronto, Ontario



**20**  
**Sude Budak**  
OH • 6-1 • FR  
Istanbul, Turkey



**21**  
**Teya Nguyen**  
S • 5-9 • FR  
San Jose, Calif.



**25**  
**Halen Kiefer**  
DS/L • 5-9 • FR  
Placentia, Calif.



**33**  
**Yazmin Pitpit**  
MB • 6-2 • 5th Yr.  
San Diego, Calif.



**Todd Kress**  
Head Coach



## Todd Kress Head Coach

San José State volleyball head coach Todd Kress took over the Spartan volleyball program in February of 2023, becoming the ninth head coach in the program's history.

Kress came to San José State after his second stint at Fairfield University. During his time at the school, he led the Stags to five NCAA Tournament appearances (2015-17, 2019 and 2021) and two Metro Atlantic Athletic Conference (MAAC) tournament titles. The program won a league-best five championships during his final eight

seasons at Fairfield.

### Career Highlights

- Currently 24th in the NCAA among active coaches w/528 wins
- Began his head coaching career at Fairfield in 1995, leading the Stags to a 23-12 mark in his second year and a MAAC regular-season championship
- All-time winningest coach in MAAC history with 283 wins and 10 regular-season championships
- Most successful season was in 1998 when the team was 35-2 and made second consecutive NCAA Tournament appearance
- Coached three seasons at Northern Illinois – 1999-2001
- Led the Huskies to a 14-win improvement in year two
- The 2001 team played in the NCAA Tournament, and Kress was the MAC Coach of the Year
- Coached six seasons at Florida State – 2002-2007
- Guided the Seminoles to the ACC Championship match in 2002 and an at-large berth to the NCAA Tournament
- Four winning seasons
- Mentored the program's first three AVCA All-America honorees and five first team All-ACC selections
- Coached five years at Buffalo – 2009-13

### Personal

- Originally from Sidney, Ohio
- Graduated from Cincinnati in 1992
- Two sons – Trevor and Trajan

### Todd Kress Honors

- Nine-time MAAC Coach of the Year – 1996, 1997, 1998, 2015, 2016, 2016, 2019, 2021, 2022
- Seven-time MAAC Tournament Champion – 1997, 1998, 2015, 2016, 2017, 2019, 2019, 2021
- 1998 AVCA District II Coach of the Year
- Nine NCAA Tournament Appearances – 1997, 1998, 2001, 2002, 2015, 2016, 2017, 2019, 2021
- 2001 Mid-American Conference Coach of the Year
- 2001 MAC Champion (Northern Illinois)

## Kress' Coaching Record

| Year            | Overall        | Conference     | School                   |
|-----------------|----------------|----------------|--------------------------|
| 1995            | 11-21          | 1-6            | Fairfield                |
| 1996%           | 23-12          | 6-1            | Fairfield                |
| 1997^           | 25-10          | 9-0            | Fairfield                |
| 1998^           | 35-2           | 9-0            | Fairfield                |
| <b>4 years</b>  | <b>94-45</b>   | <b>25-7</b>    | <b>Fairfield</b>         |
| 1999            | 10-15          | 7-11           | Northern Illinois        |
| 2000            | 24-9           | 12-6           | Northern Illinois        |
| 2001\$          | 24-6           | 15-3           | Northern Illinois        |
| <b>3 years</b>  | <b>58-30</b>   | <b>34-30</b>   | <b>Northern Illinois</b> |
| 2002\$          | 21-13          | 10-6           | Florida State            |
| 2003            | 16-17          | 5-11           | Florida State            |
| 2004            | 18-11          | 9-7            | Florida State            |
| 2005            | 13-17          | 11-11          | Florida State            |
| 2006            | 19-12          | 13-9           | Florida State            |
| 2007            | 16-14          | 13-9           | Florida State            |
| <b>6 years</b>  | <b>103-84</b>  | <b>61-53</b>   | <b>Florida State</b>     |
| 2009            | 16-16          | 5-11           | Buffalo                  |
| 2010            | 18-16          | 5-11           | Buffalo                  |
| 2011            | 11-19          | 4-12           | Buffalo                  |
| 2012            | 10-18          | 4-12           | Buffalo                  |
| 2013            | 18-12          | 6-10           | Buffalo                  |
| <b>5 years</b>  | <b>73-81</b>   | <b>24-56</b>   | <b>Buffalo</b>           |
| 2014            | 19-12          | 13-5           | Fairfield                |
| 2015^           | 21-10          | 14-4           | Fairfield                |
| 2016^           | 28-6           | 18-0           | Fairfield                |
| 2017^           | 25-7           | 18-0           | Fairfield                |
| 2018            | 14-16          | 11-7           | Fairfield                |
| 2019^           | 24-6           | 17-1           | Fairfield                |
| 2020%           | 9-1            | 9-1            | Fairfield                |
| 2021^           | 24-9           | 16-2           | Fairfield                |
| 2022%           | 25-7           | 17-1           | Fairfield                |
| <b>9 years</b>  | <b>189-74</b>  | <b>133-21</b>  | <b>Fairfield</b>         |
| <b>13 years</b> | <b>283-119</b> | <b>158-28</b>  | <b>Fairfield</b>         |
| 2023            | 12-13          | 3-9            | San José State           |
| <b>1 year</b>   | <b>12-13</b>   | <b>3-9</b>     | <b>San José State</b>    |
| <b>28 years</b> | <b>529-327</b> | <b>280-176</b> | <b>Overall</b>           |

! - MAAC Reg. & Tourn. Champ

% - MAAC Regular Season Champion

^ - MAAC Reg. & Tourn. Champ/NCAA Tournament

\$ - NCAA Tournament





2023-24 San Jose St. Women's Volleyball  
 Combined Team Statistics  
 All games

Game Records

| Overall | Conference | Home  | Away  | Neutral |
|---------|------------|-------|-------|---------|
| 12 - 13 | 3 - 9      | 4 - 4 | 3 - 8 | 5 - 1   |

Team Box Score

| ##                  | Player               | SP        | Attack      |              |            |             | Set         |             | Serve        |            |            | RE          | Dig        |             | Blocking     |           |            |              | PTS         |           |           |                |
|---------------------|----------------------|-----------|-------------|--------------|------------|-------------|-------------|-------------|--------------|------------|------------|-------------|------------|-------------|--------------|-----------|------------|--------------|-------------|-----------|-----------|----------------|
|                     |                      |           | K           | K/S          | E          | TA          | PCT         | A           | A/S          | SA         | SE         |             | SA/S       | DIG         | DIG/S        | BS        | BA         | TOT/S        |             | BLK/S     | BE        | BHE            |
| 1                   | Lawson, Jiana        | 93        | 133         | 1.43         | 43         | 340         | .265        | 2           | 0.02         | 10         | 24         | 0.11        | 0          | 38          | 0.41         | 18        | 102        | 120          | 1.29        | 10        | 1         | 212.0          |
| 2                   | Bryant, Brooke       | 91        | 195         | 2.14         | 106        | 587         | .152        | 12          | 0.13         | 6          | 3          | 0.07        | 1          | 55          | 0.60         | 6         | 50         | 56           | 0.62        | 4         | 1         | 232.0          |
| 3                   | Fleming, Blaire      | 49        | 189         | 3.86         | 85         | 420         | .248        | 3           | 0.06         | 1          | 10         | 0.02        | 6          | 39          | 0.80         | 2         | 23         | 25           | 0.51        | 8         | 0         | 203.5          |
| 4                   | Barsocchini, Laurel  | 29        | 1           | 0.03         | 1          | 4           | .000        | 15          | 0.52         | 6          | 5          | 0.21        | 3          | 56          | 1.93         | 0         | 0          | 0            | 0.00        | 1         | 1         | 7.0            |
| 5                   | Cammillucci, Letizia | 85        | 220         | 2.59         | 119        | 639         | .158        | 20          | 0.24         | 27         | 34         | 0.32        | 29         | 179         | 2.11         | 6         | 26         | 32           | 0.38        | 0         | 0         | 266.0          |
| 6                   | Ti'a, Nayeli         | 92        | 255         | 2.77         | 171        | 693         | .121        | 16          | 0.17         | 24         | 27         | 0.26        | 35         | 196         | 2.13         | 7         | 41         | 48           | 0.52        | 2         | 1         | 306.5          |
| 8                   | Conroy, Lauren       | 6         | 0           | 0.00         | 0          | 0           | .000        | 2           | 0.33         | 0          | 2          | 0.00        | 0          | 3           | 0.50         | 0         | 0          | 0            | 0.00        | 0         | 0         | 0.0            |
| 9                   | Ozdemir, Selin       | 23        | 15          | 0.65         | 6          | 40          | .225        | 1           | 0.04         | 1          | 2          | 0.04        | 3          | 17          | 0.74         | 0         | 2          | 2            | 0.09        | 1         | 0         | 17.0           |
| 10                  | Slusser, Brooke      | 93        | 58          | 0.62         | 21         | 186         | .199        | 640         | 6.88         | 28         | 30         | 0.30        | 1          | 198         | 2.13         | 1         | 19         | 20           | 0.22        | 5         | 5         | 96.5           |
| 11                  | Lawton, Mari         | 52        | 53          | 1.02         | 23         | 127         | .236        | 5           | 0.10         | 0          | 1          | 0.00        | 1          | 10          | 0.19         | 3         | 36         | 39           | 0.75        | 3         | 0         | 74.0           |
| 12                  | Bjork, Alyssa        | 47        | 48          | 1.02         | 28         | 136         | .147        | 2           | 0.04         | 0          | 0          | 0.00        | 1          | 5           | 0.11         | 2         | 25         | 27           | 0.57        | 2         | 0         | 62.5           |
| 13                  | Patterson, Elle      | 38        | 3           | 0.08         | 4          | 23          | -.043       | 4           | 0.11         | 8          | 11         | 0.21        | 9          | 32          | 0.84         | 0         | 1          | 1            | 0.03        | 0         | 0         | 11.5           |
| 14                  | Middleborn, Jade     | 4         | 1           | 0.25         | 0          | 4           | .250        | 0           | 0.00         | 0          | 0          | 0.00        | 0          | 0           | 0.00         | 0         | 1          | 1            | 0.25        | 0         | 0         | 1.5            |
| 16                  | Buffagni, Alessia    | 88        | 0           | 0.00         | 0          | 10          | .000        | 102         | 1.16         | 8          | 24         | 0.09        | 26         | 322         | 3.66         | 0         | 0          | 0            | 0.00        | 0         | 0         | 8.0            |
| 20                  | Budak, Sude          | 5         | 1           | 0.20         | 4          | 10          | -.300       | 0           | 0.00         | 0          | 1          | 0.00        | 3          | 2           | 0.40         | 0         | 0          | 0            | 0.00        | 0         | 0         | 1.0            |
| 21                  | Nguyen, Teya         | 70        | 12          | 0.17         | 2          | 32          | .313        | 275         | 3.93         | 20         | 24         | 0.29        | 0          | 123         | 1.76         | 0         | 0          | 0            | 0.00        | 0         | 4         | 32.0           |
| 25                  | Kiefer, Halen        | 2         | 0           | 0.00         | 0          | 0           | .000        | 0           | 0.00         | 0          | 1          | 0.00        | 0          | 1           | 0.50         | 0         | 0          | 0            | 0.00        | 0         | 0         | 0.0            |
| 33                  | Pitpit, Yazmin       | 8         | 4           | 0.50         | 4          | 22          | .000        | 0           | 0.00         | 2          | 3          | 0.25        | 0          | 4           | 0.50         | 1         | 2          | 3            | 0.38        | 0         | 0         | 8.0            |
| <b>SAN JOSE ST.</b> |                      | <b>93</b> | <b>1188</b> | <b>12.77</b> | <b>617</b> | <b>3273</b> | <b>.174</b> | <b>1099</b> | <b>11.82</b> | <b>141</b> | <b>202</b> | <b>1.52</b> | <b>147</b> | <b>1280</b> | <b>13.76</b> | <b>46</b> | <b>328</b> | <b>210</b>   | <b>2.26</b> | <b>36</b> | <b>13</b> | <b>1,539.0</b> |
| <b>Opponents</b>    |                      | <b>93</b> | <b>1095</b> | <b>11.77</b> | <b>466</b> | <b>3108</b> | <b>.202</b> | <b>1003</b> | <b>10.78</b> | <b>147</b> | <b>226</b> | <b>1.58</b> | <b>141</b> | <b>1197</b> | <b>12.87</b> | <b>50</b> | <b>353</b> | <b>226.5</b> | <b>2.44</b> | <b>30</b> | <b>11</b> | <b>1,468.5</b> |

Team statistics

|                         | SJSU  | OPP    |
|-------------------------|-------|--------|
| <b>ATTACK</b>           |       |        |
| Kills                   | 1188  | 1095   |
| Errors                  | 617   | 466    |
| Total Attacks           | 3273  | 3108   |
| Attack Pct              | .174  | .202   |
| Kills/Set               | 12.77 | 11.77  |
| <b>SET</b>              |       |        |
| Assists                 | 1099  | 1003   |
| Attempts                | 3262  | 3078   |
| Assist Pct              | .337  | .326   |
| Assists/Set             | 11.82 | 10.78  |
| <b>SERVE</b>            |       |        |
| Aces                    | 141   | 147    |
| Errors                  | 202   | 226    |
| Attempts                | 2065  | 2103   |
| Serve Pct               | .902  | .893   |
| Aces/Set                | 1.52  | 1.58   |
| <b>SERVE RECEPTIONS</b> |       |        |
| Errors                  | 147   | 141    |
| Errors/Set              | 1.58  | 1.52   |
| Attempts                | 1877  | 1863   |
| Reception Pct           | .922  | .999   |
| <b>DEFENSE</b>          |       |        |
| Digs                    | 1280  | 1197   |
| Digs/Set                | 13.76 | 12.87  |
| <b>BLOCKING</b>         |       |        |
| Block solo              | 46    | 50     |
| Block Assist            | 328   | 353    |
| Total Blocks            | 210   | 226.5  |
| Blocks/Set              | 2.26  | 2.44   |
| Block Errors            | 36    | 30     |
| Ball handling errors    | 13    | 11     |
| <b>ATTENDANCE</b>       |       |        |
| Total                   | 2746  | 7354   |
| Dates/Avg Per Date      | 8/343 | 11/669 |
| Neutral Site #/Avg      | 6/99  | -      |
| Current win streak      | 0     | -      |
| Home win streak         | 0     | -      |

Team Results

| Date         | Opponent             | Score | Score-by-set                  | Att. |
|--------------|----------------------|-------|-------------------------------|------|
| 08/25/2023   | CSUN                 | W 3-2 | 24-26,25-21,25-10,24-26,15-6  | 313  |
| 08/26/2023   | Jacksonville         | W 3-0 | 25-17,25-21,25-19             | 275  |
| 08/27/2023   | Santa Clara          | L 0-3 | 22-25,16-25,18-25             | 678  |
| 09/01/2023   | vs Portland          | W 3-1 | 20-25,25-16,25-17,25-15       | 102  |
| 09/01/2023   | at Sacramento St.    | L 1-3 | 23-25,15-25,27-25,19-25       | 483  |
| 09/02/2023   | vs Cal St. Fullerton | W 3-0 | 25-23,25-23,25-21             | 111  |
| 09/08/2023   | at Campbell          | W 3-1 | 22-25,25-22,26-24,25-16       | 104  |
| 09/08/2023   | vs Ga. Southern      | L 0-3 | 19-25,22-25,17-25             | 107  |
| 09/09/2023   | vs UTSA              | W 3-1 | 25-23,25-21,16-25,25-19       | 78   |
| 09/12/2023   | at Saint Mary's (CA) | W 3-1 | 25-22,25-19,28-30,25-19       | 365  |
| 09/14/2023   | at San Francisco     | L 1-3 | 21-25,25-23,24-26,16-25       | 300  |
| 09/15/2023   | vs CSUN              | W 3-0 | 28-26,25-23,25-23             | 103  |
| 09/16/2023   | vs UTRGV             | W 3-2 | 25-18,17-25,20-25,25-20,15-12 | 95   |
| * 09/21/2023 | at UNLV              | L 0-3 | 25-27,23-25,25-27             | 897  |
| * 09/23/2023 | at San Diego St.     | L 1-3 | 25-14,24-26,18-25,23-25       | 388  |
| * 09/28/2023 | Nevada               | W 3-1 | 21-25,29-27,25-17,26-24       | 302  |
| * 09/30/2023 | Fresno St.           | W 3-1 | 27-25,12-25,25-22,25-16       | 345  |
| * 10/05/2023 | at Wyoming           | L 0-3 | 18-25,18-25,22-25             | 707  |
| * 10/07/2023 | at Colorado St.      | L 0-3 | 22-25,26-28,12-25             | 2528 |
| * 10/12/2023 | Boise St.            | L 0-3 | 23-25,19-25,23-25             | 262  |
| * 10/14/2023 | Utah St.             | L 0-3 | 18-25,20-25,19-25             | 255  |
| * 10/19/2023 | New Mexico           | L 1-3 | 23-25,26-24,24-26,20-25       | 316  |
| * 10/21/2023 | at Air Force         | L 0-3 | 21-25,14-25,22-25             | 426  |
| * 10/26/2023 | at Fresno St.        | W 3-2 | 25-22,25-21,16-25,20-25,15-13 | 581  |
| * 10/28/2023 | at Nevada            | L 2-3 | 25-20,18-25,23-25,25-20,9-15  | 575  |

Match Highs

| Match             | Kills                     | Assists              | Aces                     | Digs                   | Block Solo          | Block Assists           | Total Blocks        |
|-------------------|---------------------------|----------------------|--------------------------|------------------------|---------------------|-------------------------|---------------------|
| CSUN              | Ti'a - 24                 | Slusser - 47         | Cammillucci - 4          | Slusser - 18           | Three w/1           | Lawson - 7              | Lawson - 8          |
| JACKSONVILLE      | Fleming - 15              | Slusser - 35         | Slusser - 4              | Buffagni, Slusser - 11 | Fleming - 1         | Lawson - 2              | Fleming, Lawson - 2 |
| SANTA CLARA       | Fleming - 9               | Slusser - 20         | Slusser - 2              | Ti'a - 6               | Ti'a, Bjork - 1     | Four w/2                | Bjork - 3           |
| vs. Portland      | Fleming, Cammillucci - 13 | Slusser - 30         | Nguyen - 3               | Buffagni - 14          | Lawson - 1          | Lawson - 10             | Lawson - 11         |
| at Sacramento St. | Fleming - 16              | Slusser - 25         | Cammillucci, Slusser - 2 | Buffagni - 15          | Cammillucci - 1     | Lawson - 5              | Lawson - 5          |
| vs. CS Fullerton  | Fleming - 14              | Slusser - 26         | Cammillucci, Slusser - 3 | Buffagni - 15          | --                  | Lawson - 4              | Lawson - 4          |
| at Campbell       | Fleming, Ti'a - 16        | Nguyen - 25          | Ti'a - 3                 | Buffagni - 25          | Lawson, Bryant - 1  | Lawson - 4              | Lawson - 5          |
| vs. Ga. Southern  | Ti'a - 14                 | Slusser - 15         | Fleming, Slusser - 1     | Buffagni - 14          | --                  | Bryant - 4              | Bryant - 4          |
| vs. UTSA          | Fleming - 19              | Nguyen - 23          | Ti'a - 3                 | Buffagni - 22          | Lawson - 1          | Lawson - 5              | Lawson - 6          |
| at Saint Mary's   | Fleming - 22              | Nguyen - 27          | Patterson - 3            | Cammillucci - 14       | Lawson - 1          | Lawson, Cammillucci - 5 | Lawson - 6          |
| at San Fran.      | Fleming, Cammillucci - 16 | Slusser - 21         | Four w/1                 | Buffagni - 12          | Bryant - 1          | Three w/2               | Three w/2           |
| vs. CSUN          | Fleming - 13              | Slusser, Nguyen - 19 | Nguyen - 2               | Ti'a, Buffagni - 11    | Lawson - 2          | Lawson - 5              | Lawson - 7          |
| vs. UTRGV         | Fleming - 21              | Nguyen - 27          | Bryant - 2               | Buffagni - 20          | Ti'a - 1            | Lawson - 9              | Lawson - 9          |
| at UNLV           | Cammillucci - 13          | Slusser - 15         | Lawson, Ti'a - 2         | Buffagni - 12          | Three w/1           | Lawton - 6              | Lawton - 6          |
| at San Diego St.  | Cammillucci - 16          | Slusser - 37         | Cammillucci - 2          | Buffagni - 20          | Lawson - 1          | Lawson - 7              | Lawson - 8          |
| NEVADA            | Bryant - 16               | Slusser - 35         | Nayeli, Slusser - 3      | Buffagni - 18          | Lawson - 3          | Bryant - 3              | Lawson - 5          |
| FRESNO ST.        | Cammillucci, Ti'a - 14    | Slusser - 26         | Lawson - 2               | Buffagni - 16          | Bryant, Lawton - 1  | Lawson - 5              | Lawson - 5          |
| at Wyoming        | Cammillucci, Ti'a - 11    | Slusser - 28         | Camillucci - 1           | Three w/8              | Lawson - 1          | Lawson, Bryant - 2      | Lawson - 3          |
| at Colorado State | Ti'a - 12                 | Slusser - 17         | Pitpit - 2               | Three w/8              | Pitpit - 1          | Pitpit - 2              | Pitpit - 3          |
| BOISE STATE       | Cammillucci - 16          | Slusser - 30         | Slusser, Buffagni - 1    | Buffagni - 13          | Three w/1           | Three w/2               | Bryant - 3          |
| UTAH STATE        | Cammillucci - 10          | Slusser - 19         | Patterson - 2            | Cammillucci - 8        | Bryant, Slusser - 1 | Lawson - 4              | Lawson - 4          |
| NEW MEXICO        | Ti'a - 18                 | Slusser - 23         | Cammillucci, Slusser - 3 | Buffagni - 27          | Cammillucci - 2     | Lawton - 6              | Lawton - 7          |
| at Air Force      | Bryant, Ti'a - 9          | Slusser - 22         | --                       | Slusser, Buffagni - 6  | --                  | Lawson - 3              | Lawson - 3          |
| at Fresno State   | Ti'a - 17                 | Slusser - 26         | Ti'a - 3                 | Barsocchini - 21       | Lawson - 3          | Lawson - 5              | Lawson - 8          |
| at Nevada         | Ti'a - 15                 | Slusser - 40         | Ti'a - 5                 | Barsocchini - 14       | Lawson, Bjork - 1   | Bryant - 4              | Lawson, Bryant - 4  |
| COLORADO STATE    |                           |                      |                          |                        |                     |                         |                     |
| WYOMING           |                           |                      |                          |                        |                     |                         |                     |
| at Utah State     |                           |                      |                          |                        |                     |                         |                     |
| at Boise State    |                           |                      |                          |                        |                     |                         |                     |
| UNLV              |                           |                      |                          |                        |                     |                         |                     |
| SAN DIEGO STATE   |                           |                      |                          |                        |                     |                         |                     |

2023 Individual Match Highs

|               |      |  |
|---------------|------|--|
| KILLS         | 24   | Nayeli Ti'a, vs. CSUN, 8/25/23             |
| ATTEMPTS      | 50   | Nayeli Ti'a, at Fresno State, 10/26/23     |
| HITTING %     | .611 | Blair Fleming, vs. Portland, 9/1/23        |
| ASSISTS       | 47   | Brooke Slusser, vs. CSUN, 8/25/23          |
| ACES          | 5    | Nayeli Ti'a, at Nevada, 10/28/23           |
| DIGS          | 27   | Alessia Buffagni, vs. New Mexico, 10/19/23 |
| SOLO BLOCKS   | 3    | Jiana Lawson, vs. Nevada 9/28/23           |
|               | 3    | Jiana Lawson, at Fresno State, 10/26/23    |
| BLOCK ASSISTS | 10   | Jiana Lawson, vs. Portland, 9/1/23         |
| TOTAL BLOCKS  | 11   | Jiana Lawson, vs. Portland, 9/1/23         |
| POINTS        | 27.5 | Nayeli Ti'a, vs. CSUN, 8/25/23             |

2023 Team Match Highs

|               |      |                           |
|---------------|------|---------------------------|
| KILLS         | 64   | vs. UTRGV, 9/16/23        |
| ATTEMPTS      | 176  | at Fresno State, 10/26/23 |
| HITTING %     | .296 | vs. Jacksonville, 8/26/23 |
| ASSISTS       | 61   | vs. UTRGV, 9/16/23        |
| ACES          | 11   | vs. Nevada, 9/28/23       |
|               | 11   | at Fresno State, 10/26/23 |
| DIGS          | 78   | at Campbell, 9/8/23       |
| SOLO BLOCKS   | 6    | at Fresno State, 10/26/23 |
| BLOCK ASSISTS | 32   | vs. Portland, 9/1/23      |
| BLOCKS        | 17   | Portland, 9/1/23          |



2023-24 San Jose St. Women's Volleyball  
 Combined Team Statistics  
 In Conference games

Game Records

| Overall | Conference | Home  | Away  | Neutral |
|---------|------------|-------|-------|---------|
| 3 - 9   | 3 - 9      | 2 - 3 | 1 - 6 | 0 - 0   |

Team Box Score

| ##                  | Player               | SP        | Attack     |              |            |             | Set         |            | Serve        |           |            | Dig         |           | Blocking   |              |           |            |            | PTS         |           |          |              |
|---------------------|----------------------|-----------|------------|--------------|------------|-------------|-------------|------------|--------------|-----------|------------|-------------|-----------|------------|--------------|-----------|------------|------------|-------------|-----------|----------|--------------|
|                     |                      |           | K          | K/S          | E          | TA          | PCT         | A          | A/S          | SA        | SE         | SA/S        | RE        | DIG        | DIG/S        | BS        | BA         | TOT/S      |             | BLK/S     | BE       | BHE          |
| 1                   | Lawson, Jiana        | 44        | 52         | 1.18         | 28         | 162         | .148        | 0          | 0.00         | 8         | 16         | 0.18        | 0         | 20         | 0.45         | 11        | 40         | 51         | 1.16        | 9         | 1        | 91.0         |
| 2                   | Bryant, Brooke       | 44        | 111        | 2.52         | 52         | 326         | .181        | 7          | 0.16         | 2         | 2          | 0.05        | 0         | 32         | 0.73         | 4         | 26         | 30         | 0.68        | 3         | 1        | 130.0        |
| 4                   | Barsocchini, Laurel  | 24        | 1          | 0.04         | 1          | 4           | .000        | 15         | 0.63         | 5         | 5          | 0.21        | 3         | 56         | 2.33         | 0         | 0          | 0          | 0.00        | 1         | 1        | 6.0          |
| 5                   | Cammillucci, Letizia | 36        | 122        | 3.39         | 62         | 340         | .176        | 9          | 0.25         | 12        | 15         | 0.33        | 15        | 78         | 2.17         | 5         | 5          | 10         | 0.28        | 0         | 0        | 141.5        |
| 6                   | Ti'a, Nayeli         | 44        | 133        | 3.02         | 89         | 357         | .123        | 7          | 0.16         | 13        | 11         | 0.30        | 17        | 81         | 1.84         | 4         | 23         | 27         | 0.61        | 2         | 0        | 161.5        |
| 8                   | Conroy, Lauren       | 4         | 0          | 0.00         | 0          | 0           | .000        | 2          | 0.50         | 0         | 2          | 0.00        | 0         | 3          | 0.75         | 0         | 0          | 0          | 0.00        | 0         | 0        | 0.0          |
| 9                   | Ozdemir, Selin       | 17        | 14         | 0.82         | 6          | 35          | .229        | 1          | 0.06         | 1         | 2          | 0.06        | 2         | 12         | 0.71         | 0         | 1          | 1          | 0.06        | 1         | 0        | 15.5         |
| 10                  | Slusser, Brooke      | 44        | 44         | 1.00         | 17         | 142         | .190        | 318        | 7.23         | 11        | 17         | 0.25        | 1         | 97         | 2.20         | 1         | 12         | 13         | 0.30        | 5         | 2        | 62.0         |
| 11                  | Lawton, Mari         | 31        | 30         | 0.97         | 16         | 77          | .182        | 4          | 0.13         | 0         | 1          | 0.00        | 0         | 7          | 0.23         | 2         | 22         | 24         | 0.77        | 1         | 0        | 43.0         |
| 12                  | Bjork, Alyssa        | 16        | 10         | 0.63         | 9          | 40          | .025        | 1          | 0.06         | 0         | 0          | 0.00        | 0         | 2          | 0.13         | 1         | 9          | 10         | 0.63        | 0         | 0        | 15.5         |
| 13                  | Patterson, Elle      | 23        | 2          | 0.09         | 1          | 7           | .143        | 2          | 0.09         | 4         | 4          | 0.17        | 5         | 24         | 1.04         | 0         | 0          | 0          | 0.00        | 0         | 0        | 6.0          |
| 14                  | Middleborn, Jade     | 3         | 1          | 0.33         | 0          | 3           | .333        | 0          | 0.00         | 0         | 0          | 0.00        | 0         | 0          | 0.00         | 0         | 0          | 0          | 0.00        | 0         | 0        | 1.0          |
| 16                  | Buffagni, Alessia    | 39        | 0          | 0.00         | 0          | 3           | .000        | 46         | 1.18         | 2         | 12         | 0.05        | 17        | 135        | 3.46         | 0         | 0          | 0          | 0.00        | 0         | 0        | 2.0          |
| 20                  | Budak, Sude          | 1         | 1          | 1.00         | 1          | 3           | .000        | 0          | 0.00         | 0         | 0          | 0.00        | 2         | 0          | 0.00         | 0         | 0          | 0          | 0.00        | 0         | 0        | 1.0          |
| 21                  | Nguyen, Teya         | 22        | 2          | 0.09         | 1          | 11          | .091        | 79         | 3.59         | 5         | 8          | 0.23        | 0         | 40         | 1.82         | 0         | 0          | 0          | 0.00        | 0         | 1        | 7.0          |
| 25                  | Kiefer, Halen        | 1         | 0          | 0.00         | 0          | 0           | .000        | 0          | 0.00         | 0         | 0          | 0.00        | 0         | 0          | 0.00         | 0         | 0          | 0          | 0.00        | 0         | 0        | 0.0          |
| 33                  | Pitpit, Yazmin       | 8         | 4          | 0.50         | 4          | 22          | .000        | 0          | 0.00         | 2         | 3          | 0.25        | 0         | 4          | 0.50         | 1         | 2          | 3          | 0.38        | 0         | 0        | 8.0          |
| <b>SAN JOSE ST.</b> |                      | <b>44</b> | <b>527</b> | <b>11.98</b> | <b>287</b> | <b>1532</b> | <b>.157</b> | <b>491</b> | <b>11.16</b> | <b>65</b> | <b>98</b>  | <b>1.48</b> | <b>75</b> | <b>591</b> | <b>13.43</b> | <b>29</b> | <b>140</b> | <b>99</b>  | <b>2.25</b> | <b>22</b> | <b>6</b> | <b>691.0</b> |
| <b>Opponents</b>    |                      | <b>44</b> | <b>559</b> | <b>12.70</b> | <b>218</b> | <b>1498</b> | <b>.228</b> | <b>510</b> | <b>11.59</b> | <b>75</b> | <b>116</b> | <b>1.70</b> | <b>65</b> | <b>577</b> | <b>13.11</b> | <b>28</b> | <b>158</b> | <b>107</b> | <b>2.43</b> | <b>15</b> | <b>4</b> | <b>741.0</b> |

Team statistics

|                         | SJSU  | OPP   |
|-------------------------|-------|-------|
| <b>ATTACK</b>           |       |       |
| Kills                   | 527   | 559   |
| Errors                  | 287   | 218   |
| Total Attacks           | 1532  | 1498  |
| Attack Pct              | .157  | .228  |
| Kills/Set               | 11.98 | 12.70 |
| <b>SET</b>              |       |       |
| Assists                 | 491   | 510   |
| Attempts                | 1539  | 1466  |
| Assist Pct              | .319  | .348  |
| Assists/Set             | 11.16 | 11.59 |
| <b>SERVE</b>            |       |       |
| Aces                    | 65    | 75    |
| Errors                  | 98    | 116   |
| Attempts                | 955   | 1028  |
| Serve Pct               | .897  | .887  |
| Aces/Set                | 1.48  | 1.70  |
| <b>SERVE RECEPTIONS</b> |       |       |
| Errors                  | 75    | 65    |
| Errors/Set              | 1.70  | 1.48  |
| Attempts                | 912   | 857   |
| Reception Pct           | .918  | .998  |
| <b>DEFENSE</b>          |       |       |
| Digs                    | 591   | 577   |
| Digs/Set                | 13.43 | 13.11 |
| <b>BLOCKING</b>         |       |       |
| Block solo              | 29    | 28    |
| Block Assist            | 140   | 158   |
| Total Blocks            | 99    | 107   |
| Blocks/Set              | 2.25  | 2.43  |
| Block Errors            | 22    | 15    |
| Ball handling errors    | 6     | 4     |
| <b>ATTENDANCE</b>       |       |       |
| Total                   | 1480  | 6102  |
| Dates/Avg Per Date      | 5/296 | 7/872 |
| Neutral Site #/Avg      | 0/0   | -     |
| Current win streak      | 0     | -     |
| Home win streak         | 0     | -     |

Team Results

| Date         | Opponent         | Score | Score-by-set                  | Att. |
|--------------|------------------|-------|-------------------------------|------|
| * 09/21/2023 | at UNLV          | L 0-3 | 25-27,23-25,25-27             | 897  |
| * 09/23/2023 | at San Diego St. | L 1-3 | 25-14,24-26,18-25,23-25       | 388  |
| * 09/28/2023 | Nevada           | W 3-1 | 21-25,29-27,25-17,26-24       | 302  |
| * 09/30/2023 | Fresno St.       | W 3-1 | 27-25,12-25,25-22,25-16       | 345  |
| * 10/05/2023 | at Wyoming       | L 0-3 | 18-25,18-25,22-25             | 707  |
| * 10/07/2023 | at Colorado St.  | L 0-3 | 22-25,26-28,12-25             | 2528 |
| * 10/12/2023 | Boise St.        | L 0-3 | 23-25,19-25,23-25             | 262  |
| * 10/14/2023 | Utah St.         | L 0-3 | 18-25,20-25,19-25             | 255  |
| * 10/19/2023 | New Mexico       | L 1-3 | 23-25,26-24,24-26,20-25       | 316  |
| * 10/21/2023 | at Air Force     | L 0-3 | 21-25,14-25,22-25             | 426  |
| * 10/26/2023 | at Fresno St.    | W 3-2 | 25-22,25-21,16-25,20-25,15-13 | 581  |
| * 10/28/2023 | at Nevada        | L 2-3 | 25-20,18-25,23-25,25-20,9-15  | 575  |





# #1 Jiana Lawson MB • 5-10 • SR Tucson, Ariz./ Portland

| Lawson's Season Highs |    |                   |
|-----------------------|----|-------------------|
| <b>Kills</b>          | 10 | vs. CSUN, 8-25    |
| <b>Attempts</b>       | 22 | vs. CSUN, 8-25    |
| <b>Assists</b>        | 1  | Two opponents     |
| <b>Aces</b>           | 2  | Two opponents     |
| <b>Digs</b>           | 5  | at Nevada, 20-28  |
| <b>Block Solo</b>     | 3  | Two opponents     |
| <b>Block Assists</b>  | 10 | vs. Portland, 9-1 |
| <b>Total Blocks</b>   | 11 | vs. Portland, 9-1 |

| Lawson's Collegiate Career Highs |    |                           |
|----------------------------------|----|---------------------------|
| <b>Kills</b>                     | 14 | at Utah State, 11-10-22   |
| <b>Attempts</b>                  | 25 | at San Diego, 2-10-21     |
| <b>Assists</b>                   | 5  | at Fresno State, 9-24-22  |
| <b>Aces</b>                      | 5  | at Saint Mary's, 10-28-21 |
| <b>Digs</b>                      | 5  | Two opponents             |
| <b>Block Solo</b>                | 3  | Three opponents           |
| <b>Block Assists</b>             | 10 | Two opponents             |
| <b>Total Blocks</b>              | 11 | vs. Portland, 9-1-23      |

- Starting middle blocker
- Averaging 1.43 kills, 1.29 blocks and 0.41 digs per set
- 11th in the nation in blocks with 120
- 32nd in the country in blocks per set at 1.29
- 11 blocks (1-10) in the win over Portland, just the 11th player in school history to record 11 blocks in a match
- Five or more blocks in 13 matches
- Nine blocks against UTRGV and eight blocks versus CSUN and at Fresno State
- 10 kills in the first win of the year against CSUN
- Two aces at UNLV and versus Fresno State
- Five digs at Nevada

- Four digs versus Boise State and three digs against Jacksonville and UTRGV
- Hornet Invitational All-Tournament team

| Date          | Opponent             | SP | Attack    |            |           | Set        |             |          | Serve     |             |           | Receipt   |            |             | Blocking |           |              |           | Team      |            |           |              |          |              |       |  |
|---------------|----------------------|----|-----------|------------|-----------|------------|-------------|----------|-----------|-------------|-----------|-----------|------------|-------------|----------|-----------|--------------|-----------|-----------|------------|-----------|--------------|----------|--------------|-------|--|
|               |                      |    | K         | E          | TA        | PCT        | A           | TA       | PCT       | SA          | SE        | TA        | PCT        | RE          | TA       | PCT       | DIG          | BS        | BA        | BE         | TOTAL     | BHE          | POINTS   | HIT%         | SCORE |  |
| 08/25/2023    | CSUN                 | *5 | 10        | 2          | 22        | .364       | 0           | 0        | .000      | 0           | 3         | 9         | .667       | 0           | 0        | .000      | 2            | 1         | 7         | 0          | 8.0       | 0            | 14.5     | .203         | 3-2   |  |
| 08/26/2023    | Jacksonville         | *3 | 6         | 3          | 11        | .273       | 0           | 2        | .000      | 0           | 2         | 11        | .818       | 0           | 0        | .000      | 3            | 0         | 2         | 0          | 2.0       | 0            | 7.0      | .296         | 3-0   |  |
| 08/27/2023    | Santa Clara          | *3 | 2         | 2          | 12        | .000       | 0           | 0        | .000      | 0           | 1         | 9         | .889       | 0           | 1        | 1.000     | 0            | 0         | 2         | 0          | 2.0       | 0            | 3.0      | .035         | 0-3   |  |
| 09/01/2023    | vs Portland          | *4 | 3         | 1          | 9         | .222       | 0           | 0        | .000      | 1           | 0         | 8         | 1.000      | 0           | 1        | 1.000     | 2            | 1         | 10        | 0          | 11.0      | 0            | 10.0     | .181         | 3-1   |  |
| 09/01/2023    | at Sacramento St.    | *4 | 6         | 0          | 14        | .429       | 0           | 0        | .000      | 1           | 1         | 6         | .833       | 0           | 1        | 1.000     | 2            | 0         | 5         | 1          | 5.0       | 0            | 9.5      | .167         | 1-3   |  |
| 09/02/2023    | vs Cal St. Fullerton | *3 | 9         | 0          | 14        | .643       | 0           | 1        | .000      | 0           | 1         | 3         | .667       | 0           | 0        | .000      | 0            | 0         | 4         | 0          | 4.0       | 0            | 11.0     | .213         | 3-0   |  |
| 09/08/2023    | at Campbell          | *4 | 5         | 2          | 16        | .188       | 0           | 0        | .000      | 0           | 0         | 0         | .000       | 0           | 0        | .000      | 0            | 1         | 4         | 0          | 5.0       | 0            | 8.0      | .233         | 3-1   |  |
| 09/08/2023    | vs Ga. Southern      | 3  | 4         | 1          | 9         | .333       | 1           | 2        | .500      | 0           | 0         | 0         | .000       | 0           | 0        | .000      | 1            | 0         | 2         | 0          | 2.0       | 0            | 5.0      | .101         | 0-3   |  |
| 09/09/2023    | vs UTSA              | *4 | 7         | 2          | 13        | .385       | 0           | 1        | .000      | 0           | 0         | 0         | .000       | 0           | 3        | 1.000     | 1            | 1         | 5         | 0          | 6.0       | 0            | 10.5     | .151         | 3-1   |  |
| 09/12/2023    | at Saint Mary's (CA) | *4 | 7         | 0          | 15        | .467       | 0           | 2        | .000      | 0           | 0         | 0         | .000       | 0           | 1        | 1.000     | 2            | 1         | 5         | 0          | 6.0       | 0            | 10.5     | .221         | 3-1   |  |
| 09/14/2023    | at San Francisco     | *4 | 9         | 2          | 20        | .350       | 0           | 3        | .000      | 0           | 0         | 0         | .000       | 0           | 0        | .000      | 2            | 0         | 2         | 0          | 2.0       | 0            | 10.0     | .147         | 1-3   |  |
| 09/15/2023    | vs CSUN              | 3  | 9         | 0          | 11        | .818       | 0           | 0        | .000      | 0           | 0         | 0         | .000       | 0           | 1        | 1.000     | 0            | 2         | 5         | 0          | 7.0       | 0            | 13.5     | .252         | 3-0   |  |
| 09/16/2023    | vs UTRGV             | 5  | 4         | 0          | 12        | .333       | 1           | 2        | .500      | 0           | 0         | 0         | .000       | 0           | 0        | .000      | 3            | 0         | 9         | 0          | 9.0       | 0            | 8.5      | .234         | 3-2   |  |
| 09/21/2023    | at UNLV              | *3 | 4         | 2          | 13        | .154       | 0           | 2        | .000      | 2           | 1         | 12        | .917       | 0           | 1        | 1.000     | 1            | 1         | 4         | 2          | 5.0       | 0            | 9.0      | .181         | 0-3   |  |
| 09/23/2023    | at San Diego St.     | *4 | 5         | 4          | 16        | .063       | 0           | 1        | .000      | 1           | 4         | 10        | .600       | 0           | 0        | .000      | 1            | 1         | 7         | 0          | 8.0       | 0            | 10.5     | .194         | 1-3   |  |
| 09/28/2023    | Nevada               | 4  | 4         | 3          | 13        | .077       | 0           | 1        | .000      | 0           | 0         | 10        | 1.000      | 0           | 0        | .000      | 1            | 3         | 2         | 1          | 5.0       | 0            | 8.0      | .241         | 3-1   |  |
| 09/30/2023    | Fresno St.           | *4 | 2         | 3          | 14        | -.071      | 0           | 0        | .000      | 2           | 4         | 14        | .714       | 0           | 0        | .000      | 1            | 0         | 5         | 1          | 5.0       | 0            | 6.5      | .146         | 3-1   |  |
| 10/05/2023    | at Wyoming           | *3 | 3         | 1          | 12        | .167       | 0           | 0        | .000      | 0           | 1         | 9         | .889       | 0           | 4        | 1.000     | 1            | 1         | 2         | 1          | 3.0       | 0            | 5.0      | .086         | 0-3   |  |
| 10/07/2023    | at Colorado St.      | *3 | 3         | 1          | 6         | .333       | 0           | 1        | .000      | 0           | 0         | 0         | .000       | 0           | 0        | .000      | 0            | 0         | 0         | 0          | 0.0       | 0            | 3.0      | .186         | 0-3   |  |
| 10/12/2023    | Boise St.            | *3 | 5         | 2          | 11        | .273       | 0           | 1        | .000      | 0           | 0         | 11        | 1.000      | 0           | 0        | .000      | 4            | 0         | 2         | 0          | 2.0       | 0            | 6.0      | .202         | 0-3   |  |
| 10/14/2023    | Utah St.             | *3 | 2         | 2          | 9         | .000       | 0           | 1        | .000      | 1           | 1         | 8         | .875       | 0           | 0        | .000      | 3            | 0         | 4         | 0          | 4.0       | 0            | 5.0      | .052         | 0-3   |  |
| 10/19/2023    | New Mexico           | 4  | 7         | 4          | 24        | .125       | 0           | 1        | .000      | 0           | 0         | 0         | .000       | 0           | 0        | .000      | 1            | 1         | 3         | 0          | 4.0       | 0            | 9.5      | .155         | 1-3   |  |
| 10/21/2023    | at Air Force         | *3 | 7         | 2          | 12        | .417       | 0           | 2        | .000      | 0           | 0         | 5         | 1.000      | 0           | 1        | 1.000     | 0            | 0         | 3         | 1          | 3.0       | 0            | 8.5      | .169         | 0-3   |  |
| 10/26/2023    | at Fresno St.        | *5 | 4         | 2          | 18        | .111       | 0           | 1        | .000      | 1           | 3         | 13        | .769       | 0           | 0        | .000      | 2            | 3         | 5         | 3          | 8.0       | 0            | 10.5     | .102         | 3-2   |  |
| 10/28/2023    | at Nevada            | *5 | 6         | 2          | 14        | .286       | 0           | 2        | .000      | 1           | 2         | 28        | .929       | 0           | 0        | .000      | 5            | 1         | 3         | 0          | 4.0       | 1            | 9.5      | .164         | 2-3   |  |
| <b>Totals</b> |                      |    | <b>93</b> | <b>133</b> | <b>43</b> | <b>340</b> | <b>.265</b> | <b>2</b> | <b>26</b> | <b>.077</b> | <b>10</b> | <b>24</b> | <b>166</b> | <b>.855</b> | <b>0</b> | <b>14</b> | <b>1.000</b> | <b>38</b> | <b>18</b> | <b>102</b> | <b>10</b> | <b>120.0</b> | <b>1</b> | <b>212.0</b> |       |  |

**Player Averages**

| Sets Played | Kills per set | Assists per set | Service aces per set | Digs per set | Blocks per set | Points per set |
|-------------|---------------|-----------------|----------------------|--------------|----------------|----------------|
| 93          | 1.43          | 0.02            | 0.11                 | 0.41         | 1.29           | 2.28           |

| SEASON                | TEAM | SM-MP           | K          | K/S         | E          | TA          | PCT         | A         | A/S         | SA        | SA/S        | SE        | DIG       | D/S         | RE       | BS        | BA         | TB         | B/S         | BE        | BHE      | PTS          | PTS/S       |
|-----------------------|------|-----------------|------------|-------------|------------|-------------|-------------|-----------|-------------|-----------|-------------|-----------|-----------|-------------|----------|-----------|------------|------------|-------------|-----------|----------|--------------|-------------|
| 2020-21               | UP   | 46-13           | 60         | 1.30        | 36         | 192         | .125        | 0         | 0.00        | 1         | 0.02        | 0         | 10        | 0.22        | 1        | 0         | 23         | 23         | 0.50        | 4         | 2        | 72.5         | 1.58        |
| 2021-22               | UP   | 68-22           | 78         | 1.15        | 27         | 228         | .224        | 1         | 0.01        | 13        | 0.19        | 24        | 26        | 0.38        | 0        | 8         | 50         | 58         | 0.85        | 8         | 1        | 124.0        | 1.82        |
| 2022-23               | SJSU | 103-28          | 164        | 1.59        | 46         | 377         | .313        | 7         | 0.07        | 0         | 0.00        | 6         | 24        | 0.23        | 1        | 21        | 88         | 109        | 1.06        | 12        | 0        | 229.0        | 2.22        |
| 2023-24               | SJSU | 93-25           | 133        | 1.43        | 43         | 340         | .265        | 2         | 0.02        | 10        | 0.11        | 24        | 38        | 0.41        | 0        | 18        | 102        | 120        | 1.29        | 10        | 1        | 212.0        | 2.28        |
| <b>TOTAL FOR SJSU</b> |      | <b>196 - 53</b> | <b>297</b> | <b>1.52</b> | <b>89</b>  | <b>717</b>  | <b>.290</b> | <b>9</b>  | <b>0.05</b> | <b>10</b> | <b>0.05</b> | <b>30</b> | <b>62</b> | <b>0.32</b> | <b>1</b> | <b>39</b> | <b>190</b> | <b>229</b> | <b>1.17</b> | <b>22</b> | <b>1</b> | <b>441.0</b> | <b>2.25</b> |
| <b>TOTAL</b>          |      | <b>310 - 88</b> | <b>435</b> | <b>1.40</b> | <b>152</b> | <b>1137</b> | <b>.249</b> | <b>10</b> | <b>0.03</b> | <b>24</b> | <b>0.08</b> | <b>54</b> | <b>98</b> | <b>0.32</b> | <b>2</b> | <b>47</b> | <b>263</b> | <b>310</b> | <b>1.00</b> | <b>34</b> | <b>4</b> | <b>637.5</b> | <b>2.06</b> |



**#2**  
**Brooke**  
**Bryant**  
**MB • 5-11 • JR**  
**Rancho Santa**  
**Margarita, Calif./**  
**Santa Margarita HS**

| Bryant's Season Highs |    |                          |
|-----------------------|----|--------------------------|
| <b>Kills</b>          | 16 | vs. Nevada, 9-28         |
| <b>Attempts</b>       | 49 | at Nevada, 10-28         |
| <b>Assists</b>        | 3  | at Colorado State, 10-7  |
| <b>Aces</b>           | 2  | vs. UTRGV , 9-16         |
| <b>Digs</b>           | 8  | vs. UTRGV , 9-16         |
| <b>Block Solo</b>     | 1  | Six opponents            |
| <b>Block Assists</b>  | 6  | at San Diego State, 9-23 |
| <b>Total Blocks</b>   | 6  | at San Diego State, 9-23 |

| Bryant's Career Highs |    |                            |
|-----------------------|----|----------------------------|
| <b>Kills</b>          | 16 | vs. Nevada, 9-28-23        |
| <b>Attempts</b>       | 49 | at Nevada, 10-28-23        |
| <b>Assists</b>        | 3  | at Colorado State, 10-7-23 |
| <b>Aces</b>           | 2  | vs. UTRGV , 9-16-23        |
| <b>Digs</b>           | 8  | vs. UTRGV , 9-16-23        |
| <b>Block Solo</b>     | 1  | 10 opponents               |
| <b>Block Assists</b>  | 6  | Two opponents              |
| <b>Total Blocks</b>   | 7  | San Diego State, 11-19-22  |

- Played in all 25 matches
- Averaging 2.14 kills, 0.62 blocks and 0.60 digs per set
- 10+ kills in six matches
- 16 kills in a win over Nevada
- Three assists at Colorado State
- Two aces against UTRGV
- Eight digs versus UTRGV, seven digs versus Utah State and six digs at Nevada
- Six block assists at San Diego State
- Four blocks at Campbell (1-3), Georgia Southern (0-4) at UNLV (1-3), and at Nevada

| Date          | Opponent             | SP        | Attack     |            |            |             | Set       |           |             | Serve    |          |           |             | Recept   |           |             | Blocking  |          |           |          | Team        |          |              |      |       |
|---------------|----------------------|-----------|------------|------------|------------|-------------|-----------|-----------|-------------|----------|----------|-----------|-------------|----------|-----------|-------------|-----------|----------|-----------|----------|-------------|----------|--------------|------|-------|
|               |                      |           | K          | E          | TA         | PCT         | A         | TA        | PCT         | SA       | SE       | TA        | PCT         | RE       | TA        | PCT         | DIG       | BS       | BA        | BE       | TOTAL       | BHE      | POINTS       | HIT% | SCORE |
| 08/25/2023    | CSUN                 | *5        | 6          | 8          | 26         | .077        | 1         | 2         | .500        | 0        | 0        | 0         | .000        | 1        | 4         | .750        | 2         | 0        | 2         | 0        | 2.0         | 0        | 7.0          | .203 | 3-2   |
| 08/26/2023    | Jacksonville         | 3         | 7          | 2          | 14         | .357        | 0         | 0         | .000        | 0        | 0        | 0         | .000        | 0        | 0         | .000        | 0         | 0        | 0         | 0        | 0.0         | 0        | 7.0          | .296 | 3-0   |
| 08/27/2023    | Santa Clara          | 2         | 3          | 3          | 8          | .000        | 0         | 0         | .000        | 0        | 0        | 0         | .000        | 0        | 0         | .000        | 0         | 0        | 0         | 0        | 0.0         | 0        | 3.0          | .035 | 0-3   |
| 09/01/2023    | vs Portland          | 3         | 5          | 2          | 11         | .273        | 0         | 0         | .000        | 0        | 0        | 0         | .000        | 0        | 0         | .000        | 1         | 0        | 2         | 0        | 2.0         | 0        | 6.0          | .181 | 3-1   |
| 09/01/2023    | at Sacramento St.    | 4         | 7          | 5          | 25         | .080        | 1         | 3         | .333        | 0        | 0        | 0         | .000        | 0        | 0         | .000        | 2         | 0        | 2         | 0        | 2.0         | 0        | 8.0          | .167 | 1-3   |
| 09/02/2023    | vs Cal St. Fullerton | 3         | 5          | 3          | 17         | .118        | 1         | 1         | 1.000       | 0        | 0        | 0         | .000        | 0        | 0         | .000        | 0         | 0        | 3         | 0        | 3.0         | 0        | 6.5          | .213 | 3-0   |
| 09/08/2023    | at Campbell          | *4        | 8          | 4          | 33         | .121        | 1         | 1         | 1.000       | 0        | 0        | 0         | .000        | 0        | 1         | 1.000       | 2         | 1        | 3         | 0        | 4.0         | 0        | 10.5         | .233 | 3-1   |
| 09/08/2023    | vs Ga. Southern      | *3        | 4          | 6          | 18         | -.111       | 0         | 0         | .000        | 0        | 0        | 0         | .000        | 0        | 0         | .000        | 2         | 0        | 4         | 0        | 4.0         | 0        | 6.0          | .101 | 0-3   |
| 09/09/2023    | vs UTSA              | *4        | 7          | 4          | 22         | .136        | 0         | 0         | .000        | 0        | 0        | 0         | .000        | 4        | 1.000     | 0           | 0         | 0        | 1         | 0.0      | 0           | 7.0      | .151         | 3-1  |       |
| 09/12/2023    | at Saint Mary's (CA) | *4        | 10         | 6          | 23         | .174        | 1         | 2         | .500        | 0        | 0        | 1         | 1.000       | 0        | 2         | 1.000       | 3         | 0        | 3         | 0        | 3.0         | 0        | 11.5         | .221 | 3-1   |
| 09/14/2023    | at San Francisco     | *4        | 6          | 4          | 17         | .118        | 0         | 2         | .000        | 1        | 1        | 11        | .909        | 0        | 5         | 1.000       | 1         | 1        | 0         | 0        | 1.0         | 0        | 8.0          | .147 | 1-3   |
| 09/15/2023    | vs CSUN              | *3        | 6          | 2          | 17         | .235        | 0         | 1         | .000        | 1        | 0        | 15        | 1.000       | 0        | 1         | 1.000       | 2         | 0        | 3         | 0        | 3.0         | 0        | 8.5          | .252 | 3-0   |
| 09/16/2023    | vs UTRGV             | *5        | 10         | 5          | 30         | .167        | 0         | 2         | .000        | 2        | 0        | 19        | 1.000       | 0        | 5         | 1.000       | 8         | 0        | 2         | 0        | 2.0         | 0        | 13.0         | .234 | 3-2   |
| 09/21/2023    | at UNLV              | *3        | 3          | 2          | 17         | .059        | 0         | 4         | .000        | 0        | 0        | 0         | .000        | 0        | 0         | .000        | 1         | 1        | 3         | 0        | 4.0         | 1        | 5.5          | .181 | 0-3   |
| 09/23/2023    | at San Diego St.     | *4        | 11         | 3          | 28         | .286        | 1         | 2         | .500        | 0        | 0        | 0         | .000        | 0        | 0         | .000        | 5         | 0        | 6         | 1        | 6.0         | 0        | 14.0         | .194 | 1-3   |
| 09/28/2023    | Nevada               | 4         | 16         | 3          | 27         | .481        | 0         | 0         | .000        | 0        | 0        | 0         | .000        | 0        | 0         | .000        | 1         | 0        | 3         | 1        | 3.0         | 0        | 17.5         | .241 | 3-1   |
| 09/30/2023    | Fresno St.           | 4         | 9          | 6          | 25         | .120        | 0         | 1         | .000        | 0        | 0        | 0         | .000        | 0        | 0         | .000        | 1         | 1        | 1         | 0        | 2.0         | 0        | 10.5         | .146 | 3-1   |
| 10/05/2023    | at Wyoming           | 3         | 8          | 3          | 23         | .217        | 0         | 0         | .000        | 0        | 0        | 0         | .000        | 0        | 0         | .000        | 3         | 0        | 2         | 0        | 2.0         | 0        | 9.0          | .086 | 0-3   |
| 10/07/2023    | at Colorado St.      | *3        | 6          | 5          | 18         | .056        | 3         | 4         | .750        | 1        | 0        | 11        | 1.000       | 0        | 0         | .000        | 2         | 0        | 0         | 0        | 0.0         | 0        | 7.0          | .186 | 0-3   |
| 10/12/2023    | Boise St.            | *3        | 9          | 4          | 23         | .217        | 1         | 1         | 1.000       | 0        | 0        | 2         | 1.000       | 0        | 0         | .000        | 0         | 1        | 2         | 0        | 3.0         | 0        | 11.0         | .202 | 0-3   |
| 10/14/2023    | Utah St.             | 3         | 9          | 3          | 21         | .286        | 0         | 1         | .000        | 1        | 1        | 8         | .875        | 0        | 0         | .000        | 7         | 1        | 1         | 0        | 2.0         | 0        | 11.5         | .052 | 0-3   |
| 10/19/2023    | New Mexico           | *4        | 13         | 4          | 34         | .265        | 1         | 2         | .500        | 0        | 0        | 0         | .000        | 0        | 0         | .000        | 1         | 0        | 1         | 0        | 1.0         | 0        | 13.5         | .155 | 1-3   |
| 10/21/2023    | at Air Force         | *3        | 9          | 2          | 23         | .304        | 1         | 2         | .500        | 0        | 1        | 4         | .750        | 0        | 0         | .000        | 2         | 0        | 0         | 0        | 0.0         | 0        | 9.0          | .169 | 0-3   |
| 10/26/2023    | at Fresno St.        | *5        | 10         | 7          | 38         | .079        | 0         | 7         | .000        | 0        | 0        | 0         | .000        | 0        | 0         | .000        | 3         | 0        | 3         | 1        | 3.0         | 0        | 11.5         | .102 | 3-2   |
| 10/28/2023    | at Nevada            | *5        | 8          | 10         | 49         | -.041       | 0         | 0         | .000        | 0        | 0        | 0         | .000        | 0        | 0         | .000        | 6         | 0        | 4         | 0        | 4.0         | 0        | 10.0         | .164 | 2-3   |
| <b>Totals</b> |                      | <b>91</b> | <b>195</b> | <b>106</b> | <b>587</b> | <b>.152</b> | <b>12</b> | <b>38</b> | <b>.316</b> | <b>6</b> | <b>3</b> | <b>71</b> | <b>.958</b> | <b>1</b> | <b>22</b> | <b>.955</b> | <b>55</b> | <b>6</b> | <b>50</b> | <b>4</b> | <b>56.0</b> | <b>1</b> | <b>232.0</b> |      |       |

Player Averages

| Sets Played | Kills per set | Assists per set | Service aces per set | Digs per set | Blocks per set | Points per set |
|-------------|---------------|-----------------|----------------------|--------------|----------------|----------------|
| 91          | 2.14          | 0.13            | 0.07                 | 0.60         | 0.62           | 2.55           |

| SEASON       | TEAM | SM-MP           | K          | K/S         | E          | TA         | PCT         | A         | A/S         | SA       | SA/S        | SE       | DIG       | D/S         | RE       | BS        | BA        | TB        | B/S         | BE       | BHE      | PTS          | PTS/S       |
|--------------|------|-----------------|------------|-------------|------------|------------|-------------|-----------|-------------|----------|-------------|----------|-----------|-------------|----------|-----------|-----------|-----------|-------------|----------|----------|--------------|-------------|
| 2021-22      | SJSU | 31-18           | 18         | 0.58        | 8          | 60         | .167        | 0         | 0.00        | 0        | 0.00        | 0        | 4         | 0.13        | 0        | 2         | 11        | 13        | 0.42        | 1        | 0        | 25.5         | 0.82        |
| 2022-23      | SJSU | 56-27           | 51         | 0.91        | 34         | 153        | .111        | 2         | 0.04        | 0        | 0.00        | 5        | 14        | 0.25        | 0        | 2         | 23        | 25        | 0.45        | 4        | 1        | 64.5         | 1.15        |
| 2023-24      | SJSU | 91-25           | 195        | 2.14        | 106        | 587        | .152        | 12        | 0.13        | 6        | 0.07        | 3        | 55        | 0.60        | 1        | 6         | 50        | 56        | 0.62        | 4        | 1        | 232.0        | 2.55        |
| <b>TOTAL</b> |      | <b>178 - 70</b> | <b>264</b> | <b>1.48</b> | <b>148</b> | <b>800</b> | <b>.145</b> | <b>14</b> | <b>0.08</b> | <b>6</b> | <b>0.03</b> | <b>8</b> | <b>73</b> | <b>0.41</b> | <b>1</b> | <b>10</b> | <b>84</b> | <b>94</b> | <b>0.53</b> | <b>9</b> | <b>2</b> | <b>322.0</b> | <b>1.81</b> |



# #3 Blaire Fleming

OH/RS • 6-1 • R-JR  
Aldie, Va./  
Coastal Carolina

| Fleming's Season Highs |    |                           |
|------------------------|----|---------------------------|
| Kills                  | 22 | at Saint Mary's, 9-12     |
| Attempts               | 48 | vs. UTRGV, 9-16           |
| Assists                | 1  | Three opponents           |
| Aces                   | 1  | vs. Georgia Southern, 9-8 |
| Digs                   | 7  | at Campbell, 9-7          |
| Block Solo             | 1  | Two opponents             |
| Block Assists          | 7  | vs. Portland, 9-1         |
| Total Blocks           | 7  | vs. Portland, 9-1         |

| Fleming's Career Highs |    |                              |
|------------------------|----|------------------------------|
| Kills                  | 22 | at Saint Mary's, 9-12-23     |
| Attempts               | 48 | vs. UTRGV, 9-16-23           |
| Assists                | 3  | at Fresno State, 9-24-22     |
| Aces                   | 1  | vs. Georgia Southern, 9-8-23 |
| Digs                   | 7  | at Campbell, 9-7-23          |
| Block Solo             | 1  | Eight opponents              |
| Block Assists          | 7  | vs. Portland, 9-1-23         |
| Total Blocks           | 7  | vs. Portland, 9-1-23         |

- Played in 13 matches and 49 sets
- Averaging 3.86 kills, 0.80 digs and 0.51 blocks per set
- Double-figure kills in 11 match
- 20+ kills twice - 22 at Saint Mary's and 21 vs. UTRGV
- Seven digs at Campbell
- Seven blocks in a win over Portland
- Only service ace against Georgia Southern
- Named to two all-tournament teams
  - San José State/Santa Clara Invitational
  - Hornet Invitational

| Date          | Opponent             | SP        | Attack     |           |            |             | Set      |           |             | Serve    |           |           |             | Receipt  |           |             | Blocking  |          |           |          | Team        |          |              |      |       |
|---------------|----------------------|-----------|------------|-----------|------------|-------------|----------|-----------|-------------|----------|-----------|-----------|-------------|----------|-----------|-------------|-----------|----------|-----------|----------|-------------|----------|--------------|------|-------|
|               |                      |           | K          | E         | TA         | PCT         | A        | TA        | PCT         | SA       | SE        | TA        | PCT         | RE       | TA        | PCT         | DIG       | BS       | BA        | BE       | TOTAL       | BHE      | POINTS       | HIT% | SCORE |
| 08/25/2023    | CSUN                 | 5         | 10         | 8         | 29         | .069        | 0        | 0         | .000        | 0        | 0         | 0         | .000        | 0        | 8         | 1.000       | 2         | 1        | 1         | 1        | 2.0         | 0        | 11.5         | .203 | 3-2   |
| 08/26/2023    | Jacksonville         | *3        | 15         | 6         | 29         | .310        | 0        | 2         | .000        | 0        | 0         | 0         | .000        | 1        | 10        | .900        | 0         | 1        | 1         | 1        | 2.0         | 0        | 16.5         | .296 | 3-0   |
| 08/27/2023    | Santa Clara          | *3        | 9          | 5         | 22         | .182        | 0        | 0         | .000        | 0        | 0         | 0         | .000        | 3        | 11        | .727        | 2         | 0        | 2         | 0        | 2.0         | 0        | 10.0         | .035 | 0-3   |
| 09/01/2023    | vs Portland          | *4        | 13         | 2         | 18         | .611        | 0        | 0         | .000        | 0        | 0         | 0         | .000        | 0        | 1         | 1.000       | 2         | 0        | 7         | 2        | 7.0         | 0        | 16.5         | .181 | 3-1   |
| 09/01/2023    | at Sacramento St.    | *4        | 16         | 8         | 39         | .205        | 0        | 1         | .000        | 0        | 2         | 3         | .333        | 0        | 11        | 1.000       | 1         | 0        | 0         | 1        | 0.0         | 0        | 16.0         | .167 | 1-3   |
| 09/02/2023    | vs Cal St. Fullerton | *3        | 14         | 5         | 28         | .321        | 0        | 1         | .000        | 0        | 0         | 0         | .000        | 0        | 1         | 1.000       | 6         | 0        | 1         | 0        | 1.0         | 0        | 14.5         | .213 | 3-0   |
| 09/08/2023    | at Campbell          | *4        | 16         | 6         | 41         | .244        | 1        | 2         | .500        | 0        | 2         | 16        | .875        | 1        | 6         | .833        | 7         | 0        | 1         | 2        | 1.0         | 0        | 16.5         | .233 | 3-1   |
| 09/08/2023    | vs Ga. Southern      | *3        | 5          | 6         | 21         | -.048       | 1        | 2         | .500        | 1        | 4         | 12        | .667        | 0        | 2         | 1.000       | 2         | 0        | 0         | 0        | 0.0         | 0        | 6.0          | .101 | 0-3   |
| 09/09/2023    | vs UTSA              | *4        | 19         | 9         | 36         | .278        | 0        | 3         | .000        | 0        | 1         | 7         | .857        | 0        | 2         | 1.000       | 3         | 0        | 4         | 1        | 4.0         | 0        | 21.0         | .151 | 3-1   |
| 09/12/2023    | at Saint Mary's (CA) | *4        | 22         | 5         | 42         | .405        | 0        | 1         | .000        | 0        | 1         | 8         | .875        | 0        | 4         | 1.000       | 4         | 0        | 0         | 0        | 0.0         | 0        | 22.0         | .221 | 3-1   |
| 09/14/2023    | at San Francisco     | *4        | 16         | 11        | 39         | .128        | 1        | 2         | .500        | 0        | 0         | 0         | .000        | 0        | 1         | 1.000       | 5         | 0        | 2         | 0        | 2.0         | 0        | 17.0         | .147 | 1-3   |
| 09/15/2023    | vs CSUN              | *3        | 13         | 4         | 28         | .321        | 0        | 0         | .000        | 0        | 0         | 0         | .000        | 0        | 3         | 1.000       | 1         | 0        | 1         | 0        | 1.0         | 0        | 13.5         | .252 | 3-0   |
| 09/16/2023    | vs UTRGV             | *5        | 21         | 10        | 48         | .229        | 0        | 3         | .000        | 0        | 0         | 0         | .000        | 1        | 4         | .750        | 4         | 0        | 3         | 0        | 3.0         | 0        | 22.5         | .234 | 3-2   |
| <b>Totals</b> |                      | <b>49</b> | <b>189</b> | <b>85</b> | <b>420</b> | <b>.248</b> | <b>3</b> | <b>17</b> | <b>.176</b> | <b>1</b> | <b>10</b> | <b>46</b> | <b>.783</b> | <b>6</b> | <b>64</b> | <b>.906</b> | <b>39</b> | <b>2</b> | <b>23</b> | <b>8</b> | <b>25.0</b> | <b>0</b> | <b>203.5</b> |      |       |

**Player Averages**

| Sets Played | Kills per set | Assists per set | Service aces per set | Digs per set | Blocks per set | Points per set |
|-------------|---------------|-----------------|----------------------|--------------|----------------|----------------|
| 49          | 3.86          | 0.06            | 0.02                 | 0.80         | 0.51           | 4.15           |

| SEASON                | TEAM            | SM-MP      | K           | K/S        | E           | TA          | PCT       | A           | A/S      | SA          | SA/S      | SE        | DIG         | D/S      | RE       | BS        | BA        | TB          | B/S       | BE       | BHE          | PTS         | PTS/S |
|-----------------------|-----------------|------------|-------------|------------|-------------|-------------|-----------|-------------|----------|-------------|-----------|-----------|-------------|----------|----------|-----------|-----------|-------------|-----------|----------|--------------|-------------|-------|
| 2020-21               | CCU             | 22-10      | 41          | 1.86       | 23          | 91          | .198      | 0           | 0.00     | 0           | 0.00      | 4         | 5           | 0.23     | 3        | 2         | 3         | 5           | 0.23      | 1        | 0            | 44.5        | 2.02  |
| 2022-23               | SJSU            | 106-27     | 311         | 2.93       | 158         | 663         | .231      | 7           | 0.07     | 0           | 0.00      | 7         | 44          | 0.42     | 0        | 4         | 57        | 61          | 0.58      | 7        | 0            | 343.5       | 3.24  |
| 2023-24               | SJSU            | 49-13      | 189         | 3.86       | 85          | 420         | .248      | 3           | 0.06     | 1           | 0.02      | 10        | 39          | 0.80     | 6        | 2         | 23        | 25          | 0.51      | 8        | 0            | 203.5       | 4.15  |
| <b>TOTAL FOR SJSU</b> | <b>155 - 40</b> | <b>500</b> | <b>3.23</b> | <b>243</b> | <b>1083</b> | <b>.237</b> | <b>10</b> | <b>0.06</b> | <b>1</b> | <b>0.01</b> | <b>17</b> | <b>83</b> | <b>0.54</b> | <b>6</b> | <b>6</b> | <b>80</b> | <b>86</b> | <b>0.55</b> | <b>15</b> | <b>0</b> | <b>547.0</b> | <b>3.53</b> |       |
| <b>TOTAL</b>          | <b>177 - 50</b> | <b>541</b> | <b>3.06</b> | <b>266</b> | <b>1174</b> | <b>.234</b> | <b>10</b> | <b>0.06</b> | <b>1</b> | <b>0.01</b> | <b>21</b> | <b>88</b> | <b>0.50</b> | <b>9</b> | <b>8</b> | <b>83</b> | <b>91</b> | <b>0.51</b> | <b>16</b> | <b>0</b> | <b>591.5</b> | <b>3.34</b> |       |



**#4**  
**Laurel**  
**Barsocchini**  
**DS/L • 5-6 • FR**  
**Westlake Village**  
**Calif./Agoura HS**

| Barsocchini's Season Highs |                           |
|----------------------------|---------------------------|
| Kills                      | 1 at Air Force, 10-21     |
| Attempts                   | 2 at Fresno State, 10-26  |
| Assists                    | 6 Two opponents           |
| Aces                       | 3 at Nevada, 10-28        |
| Digs                       | 21 at Fresno State, 10-26 |
| Block Solo                 | -- --                     |
| Block Assists              | -- --                     |
| Total Blocks               | -- --                     |

- Played in 13 matches and 29 sets
- Starting libero the past two matches
- Season-high 21 digs at Fresno State
- Added 14 digs at Nevada
- Started at Wyoming where she had five digs
- Came of the bench against Boise State and had nine digs
- Served as the team's libero in the third set at Air Force on October 21
- Recorded three digs in the match
- Had her first collegiate kill as her dig went back over the net and fell for a kill
- Six assists at Fresno State and at Nevada
- Three aces at Nevada and one ace against CSUN and Nevada (home)

| Date          | Opponent          | SP        | Attack   |          |          |             | Set       |           |             | Serve    |          |           |             | Recept   |           |             | Blocking  |          |          |          | Team       |          |            |      |       |
|---------------|-------------------|-----------|----------|----------|----------|-------------|-----------|-----------|-------------|----------|----------|-----------|-------------|----------|-----------|-------------|-----------|----------|----------|----------|------------|----------|------------|------|-------|
|               |                   |           | K        | E        | TA       | PCT         | A         | TA        | PCT         | SA       | SE       | TA        | PCT         | RE       | TA        | PCT         | DIG       | BS       | BA       | BE       | TOTAL      | BHE      | POINTS     | HIT% | SCORE |
| 08/25/2023    | CSUN              | 2         | 0        | 0        | 0        | .000        | 0         | 0         | .000        | 1        | 0        | 4         | 1.000       | 0        | 0         | .000        | 0         | 0        | 0        | 0        | 0.0        | 0        | 1.0        | .203 | 3-2   |
| 08/26/2023    | Jacksonville      | 1         | 0        | 0        | 0        | .000        | 0         | 0         | .000        | 0        | 0        | 1         | 1.000       | 0        | 0         | .000        | 0         | 0        | 0        | 0        | 0.0        | 0        | 0.0        | .296 | 3-0   |
| 09/01/2023    | at Sacramento St. | 2         | 0        | 0        | 0        | .000        | 0         | 0         | .000        | 0        | 0        | 2         | 1.000       | 0        | 0         | .000        | 0         | 0        | 0        | 0        | 0.0        | 0        | 0.0        | .167 | 1-3   |
| 09/21/2023    | at UNLV           | 2         | 0        | 0        | 0        | .000        | 0         | 1         | .000        | 0        | 0        | 2         | 1.000       | 0        | 2         | 1.000       | 1         | 0        | 0        | 0        | 0.0        | 0        | 0.0        | .181 | 0-3   |
| 09/23/2023    | at San Diego St.  | 1         | 0        | 0        | 0        | .000        | 0         | 0         | .000        | 0        | 0        | 1         | 1.000       | 0        | 1         | 1.000       | 0         | 0        | 0        | 0        | 0.0        | 0        | 0.0        | .194 | 1-3   |
| 09/28/2023    | Nevada            | 1         | 0        | 0        | 0        | .000        | 1         | 2         | .500        | 1        | 0        | 2         | 1.000       | 0        | 1         | 1.000       | 1         | 0        | 0        | 0        | 0.0        | 0        | 1.0        | .241 | 3-1   |
| 09/30/2023    | Fresno St.        | 2         | 0        | 0        | 0        | .000        | 1         | 1         | 1.000       | 0        | 0        | 6         | 1.000       | 0        | 4         | 1.000       | 1         | 0        | 0        | 0        | 0.0        | 0        | 1.0        | .146 | 3-1   |
| 10/05/2023    | at Wyoming        | *2        | 0        | 0        | 0        | .000        | 0         | 0         | .000        | 0        | 0        | 5         | 1.000       | 0        | 1         | 1.000       | 5         | 0        | 0        | 0        | 0.0        | 0        | 0.0        | .086 | 0-3   |
| 10/12/2023    | Boise St.         | 3         | 0        | 0        | 0        | .000        | 0         | 1         | .000        | 0        | 2        | 8         | .750        | 0        | 3         | 1.000       | 9         | 0        | 0        | 0        | 0.0        | 0        | 0.0        | .202 | 0-3   |
| 10/14/2023    | Utah St.          | *2        | 0        | 0        | 0        | .000        | 0         | 0         | .000        | 0        | 0        | 0         | .000        | 1        | 1         | .000        | 1         | 0        | 0        | 0        | 0.0        | 0        | 0.0        | .052 | 0-3   |
| 10/21/2023    | at Air Force      | 1         | 1        | 0        | 1        | 1.000       | 1         | 5         | .200        | 0        | 0        | 2         | 1.000       | 0        | 6         | 1.000       | 3         | 0        | 0        | 0        | 0.0        | 1        | 1.0        | .169 | 0-3   |
| 10/26/2023    | at Fresno St.     | 5         | 0        | 0        | 2        | .000        | 6         | 21        | .286        | 1        | 2        | 13        | .846        | 0        | 24        | 1.000       | 21        | 0        | 0        | 0        | 0.0        | 0        | 1.0        | .102 | 3-2   |
| 10/28/2023    | at Nevada         | 5         | 0        | 1        | 1        | -1.000      | 6         | 16        | .375        | 3        | 1        | 14        | .929        | 2        | 22        | .909        | 14        | 0        | 0        | 1        | 0.0        | 0        | 3.0        | .164 | 2-3   |
| <b>Totals</b> |                   | <b>29</b> | <b>1</b> | <b>1</b> | <b>4</b> | <b>.000</b> | <b>15</b> | <b>47</b> | <b>.319</b> | <b>6</b> | <b>5</b> | <b>60</b> | <b>.917</b> | <b>3</b> | <b>65</b> | <b>.954</b> | <b>56</b> | <b>0</b> | <b>0</b> | <b>1</b> | <b>0.0</b> | <b>1</b> | <b>7.0</b> |      |       |

**Player Averages**

| Sets Played | Kills per set | Assists per set | Service aces per set | Digs per set | Blocks per set | Points per set |
|-------------|---------------|-----------------|----------------------|--------------|----------------|----------------|
| 29          | 0.03          | 0.52            | 0.21                 | 1.93         | 0.00           | 0.24           |

| SEASON       | TEAM | SM-MP          | K        | K/S         | E        | TA       | PCT         | A         | A/S         | SA       | SA/S        | SE       | DIG       | D/S         | RE       | BS       | BA       | TB       | B/S         | BE       | BHE      | PTS        | PTS/S       |
|--------------|------|----------------|----------|-------------|----------|----------|-------------|-----------|-------------|----------|-------------|----------|-----------|-------------|----------|----------|----------|----------|-------------|----------|----------|------------|-------------|
| 2023-24      | SJSU | 29-13          | 1        | 0.03        | 1        | 4        | .000        | 15        | 0.52        | 6        | 0.21        | 5        | 56        | 1.93        | 3        | 0        | 0        | 0        | 0.00        | 1        | 1        | 7.0        | 0.24        |
| <b>TOTAL</b> |      | <b>29 - 13</b> | <b>1</b> | <b>0.03</b> | <b>1</b> | <b>4</b> | <b>.000</b> | <b>15</b> | <b>0.52</b> | <b>6</b> | <b>0.21</b> | <b>5</b> | <b>56</b> | <b>1.93</b> | <b>3</b> | <b>0</b> | <b>0</b> | <b>0</b> | <b>0.00</b> | <b>1</b> | <b>1</b> | <b>7.0</b> | <b>0.24</b> |





**#5**  
**Letizia**  
**Cammillucci**  
**OH • 5-11 • SR**  
**Padova, Italy**

- Played in 24 matches
- Averaging 2.59 kills, 2.11 digs, 0.31 aces and 0.38 blocks per set
- 10+kills in 11 matches
- 16 kills at San Francisco, at San Diego State and versus Boise State
- Three assists at Sacramento State and versus UTRGV and New Mexico
- Four aces against CSUN and three aces versus CS Fullerton and New Mexico
- Four double-doubles on the season
- 10+ digs in six matches
- 14 digs at Campbell and at Saint Mary's
- Two solo blocks against New Mexico and one solo block in three matches
- Five block assists at Saint Mary's
- Four block assists versus UTRGV and three block assists versus Portland

| Cammillucci's Season Highs |    |                       |
|----------------------------|----|-----------------------|
| <b>Kills</b>               | 16 | Three opponents       |
| <b>Attempts</b>            | 44 | vs. New Mexico, 10-19 |
| <b>Assists</b>             | 3  | Three opponents       |
| <b>Aces</b>                | 4  | vs. CSUN, 8-25        |
| <b>Digs</b>                | 14 | Two opponents         |
| <b>Block Solo</b>          | 2  | vs. New Mexico, 10-19 |
| <b>Block Assists</b>       | 5  | at Saint Mary's, 9-12 |
| <b>Total Blocks</b>        | 5  | at Saint Mary's, 9-12 |
| Cammillucci's Career Highs |    |                       |
| <b>Kills</b>               | 20 | Boise State, 11-13-21 |
| <b>Attempts</b>            | 53 | Utah State, 11-11-21  |
| <b>Assists</b>             | 4  | Saint Mary's, 9-2-22  |
| <b>Aces</b>                | 6  | Saint Mary's, 9-2-22  |
| <b>Digs</b>                | 16 | Two opponents         |
| <b>Block Solo</b>          | 2  | New Mexico, 10-19-23  |
| <b>Block Assists</b>       | 5  | Two opponents         |
| <b>Total Blocks</b>        | 5  | Two opponents         |

| Date          | Opponent             | SP        | K          | E          | TA         | PCT         | A         | TA         | PCT         | SA        | SE        | TA         | PCT         | RE        | TA         | PCT         | DIG        | BS       | BA        | BE       | TOTAL       | BHE      | POINTS       | HIT% | SCORE |
|---------------|----------------------|-----------|------------|------------|------------|-------------|-----------|------------|-------------|-----------|-----------|------------|-------------|-----------|------------|-------------|------------|----------|-----------|----------|-------------|----------|--------------|------|-------|
| 08/25/2023    | CSUN                 | *5        | 1          | 1          | 8          | .000        | 1         | 3          | .333        | 4         | 2         | 27         | .926        | 0         | 18         | 1.000       | 5          | 0        | 0         | 0        | 0.0         | 0        | 5.0          | .203 | 3-2   |
| 08/26/2023    | Jacksonville         | 3         | 4          | 1          | 6          | .500        | 1         | 3          | .333        | 1         | 1         | 9          | .889        | 2         | 10         | .800        | 8          | 0        | 0         | 0        | 0.0         | 0        | 5.0          | .296 | 3-0   |
| 08/27/2023    | Santa Clara          | 3         | 1          | 1          | 3          | .000        | 0         | 3          | .000        | 1         | 3         | 13         | .769        | 1         | 13         | .923        | 5          | 0        | 0         | 0        | 0.0         | 0        | 2.0          | .035 | 0-3   |
| 09/01/2023    | vs Portland          | *4        | 13         | 6          | 34         | .206        | 0         | 3          | .000        | 0         | 0         | 11         | 1.000       | 3         | 33         | .909        | 8          | 0        | 3         | 0        | 3.0         | 0        | 14.5         | .181 | 3-1   |
| 09/01/2023    | at Sacramento St.    | *4        | 12         | 7          | 33         | .152        | 3         | 5          | .600        | 2         | 0         | 13         | 1.000       | 1         | 34         | .971        | 11         | 1        | 1         | 0        | 2.0         | 0        | 15.5         | .167 | 1-3   |
| 09/02/2023    | vs Cal St. Fullerton | *3        | 4          | 4          | 21         | .000        | 0         | 2          | .000        | 3         | 2         | 14         | .857        | 1         | 18         | .944        | 5          | 0        | 1         | 0        | 1.0         | 0        | 7.5          | .213 | 3-0   |
| 09/08/2023    | at Campbell          | *4        | 9          | 3          | 25         | .240        | 0         | 2          | .000        | 0         | 2         | 12         | .833        | 1         | 25         | .960        | 14         | 0        | 2         | 0        | 2.0         | 0        | 10.0         | .233 | 3-1   |
| 09/08/2023    | vs Ga. Southern      | *3        | 7          | 9          | 32         | -.063       | 0         | 1          | .000        | 0         | 0         | 7          | 1.000       | 1         | 12         | .917        | 2          | 0        | 1         | 0        | 1.0         | 0        | 7.5          | .101 | 0-3   |
| 09/09/2023    | vs UTSA              | *4        | 6          | 5          | 27         | .037        | 1         | 7          | .143        | 1         | 1         | 15         | .933        | 0         | 20         | 1.000       | 3          | 0        | 2         | 0        | 2.0         | 0        | 8.0          | .151 | 3-1   |
| 09/12/2023    | at Saint Mary's (CA) | *4        | 7          | 5          | 26         | .077        | 1         | 6          | .167        | 2         | 2         | 15         | .867        | 3         | 17         | .824        | 14         | 0        | 5         | 0        | 5.0         | 0        | 11.5         | .221 | 3-1   |
| 09/14/2023    | at San Francisco     | *4        | 16         | 6          | 35         | .286        | 1         | 7          | .143        | 1         | 3         | 11         | .727        | 0         | 16         | 1.000       | 7          | 0        | 1         | 0        | 1.0         | 0        | 17.5         | .147 | 1-3   |
| 09/15/2023    | vs CSUN              | *3        | 6          | 3          | 21         | .143        | 0         | 4          | .000        | 0         | 1         | 13         | .923        | 1         | 21         | .952        | 9          | 0        | 1         | 0        | 1.0         | 0        | 6.5          | .252 | 3-0   |
| 09/16/2023    | vs UTRGV             | *5        | 12         | 6          | 28         | .214        | 3         | 9          | .333        | 0         | 2         | 18         | .889        | 0         | 11         | 1.000       | 10         | 0        | 4         | 0        | 4.0         | 0        | 14.0         | .234 | 3-2   |
| 09/21/2023    | at UNLV              | *3        | 13         | 8          | 29         | .172        | 1         | 10         | .100        | 1         | 0         | 14         | 1.000       | 0         | 19         | 1.000       | 5          | 0        | 1         | 0        | 1.0         | 0        | 14.5         | .181 | 0-3   |
| 09/23/2023    | at San Diego St.     | *4        | 16         | 2          | 36         | .389        | 1         | 6          | .167        | 2         | 2         | 19         | .895        | 1         | 24         | .958        | 11         | 0        | 1         | 0        | 1.0         | 0        | 18.5         | .194 | 1-3   |
| 09/28/2023    | Nevada               | *4        | 9          | 9          | 33         | .000        | 1         | 4          | .250        | 2         | 1         | 19         | .947        | 3         | 27         | .889        | 9          | 0        | 0         | 0        | 0.0         | 0        | 11.0         | .241 | 3-1   |
| 09/30/2023    | Fresno St.           | *4        | 14         | 5          | 40         | .225        | 0         | 1          | .000        | 1         | 2         | 12         | .833        | 1         | 27         | .963        | 2          | 0        | 0         | 0        | 0.0         | 0        | 15.0         | .146 | 3-1   |
| 10/05/2023    | at Wyoming           | *3        | 11         | 10         | 35         | .029        | 1         | 2          | .500        | 1         | 2         | 14         | .857        | 1         | 25         | .960        | 8          | 1        | 0         | 0        | 1.0         | 0        | 13.0         | .086 | 0-3   |
| 10/07/2023    | at Colorado St.      | *3        | 9          | 3          | 25         | .240        | 1         | 3          | .333        | 1         | 1         | 14         | .929        | 2         | 12         | .833        | 4          | 0        | 1         | 0        | 1.0         | 0        | 10.5         | .186 | 0-3   |
| 10/12/2023    | Boise St.            | *3        | 16         | 2          | 32         | .438        | 0         | 5          | .000        | 0         | 2         | 10         | .800        | 1         | 6          | .833        | 8          | 1        | 0         | 0        | 1.0         | 0        | 17.0         | .202 | 0-3   |
| 10/14/2023    | Utah St.             | *3        | 10         | 8          | 31         | .065        | 1         | 4          | .250        | 0         | 2         | 11         | .818        | 1         | 1          | .000        | 8          | 0        | 0         | 0        | 0.0         | 0        | 10.0         | .052 | 0-3   |
| 10/19/2023    | New Mexico           | *4        | 13         | 6          | 44         | .159        | 3         | 11         | .273        | 3         | 1         | 17         | .941        | 3         | 38         | .921        | 13         | 2        | 1         | 0        | 3.0         | 0        | 18.5         | .155 | 1-3   |
| 10/21/2023    | at Air Force         | *3        | 6          | 7          | 21         | -.048       | 0         | 0          | .000        | 0         | 1         | 13         | .923        | 1         | 19         | .947        | 5          | 0        | 1         | 0        | 1.0         | 0        | 6.5          | .169 | 0-3   |
| 10/26/2023    | at Fresno St.        | *2        | 5          | 2          | 14         | .214        | 0         | 1          | .000        | 1         | 1         | 10         | .900        | 1         | 15         | .933        | 5          | 1        | 0         | 0        | 1.0         | 0        | 7.0          | .102 | 3-2   |
| <b>Totals</b> |                      | <b>85</b> | <b>220</b> | <b>119</b> | <b>639</b> | <b>.158</b> | <b>20</b> | <b>102</b> | <b>.196</b> | <b>27</b> | <b>34</b> | <b>331</b> | <b>.897</b> | <b>29</b> | <b>461</b> | <b>.937</b> | <b>179</b> | <b>6</b> | <b>26</b> | <b>0</b> | <b>32.0</b> | <b>0</b> | <b>266.0</b> |      |       |

Player Averages

| Sets Played | Kills per set | Assists per set | Service aces per set | Digs per set | Blocks per set | Points per set |
|-------------|---------------|-----------------|----------------------|--------------|----------------|----------------|
| 85          | 2.59          | 0.24            | 0.32                 | 2.11         | 0.38           | 3.13           |

| SEASON       | TEAM | SM-MP           | K          | K/S         | E          | TA          | PCT         | A         | A/S         | SA        | SA/S        | SE        | DIG        | D/S         | RE        | BS        | BA        | TB        | B/S         | BE       | BHE      | PTS          | PTS/S       |
|--------------|------|-----------------|------------|-------------|------------|-------------|-------------|-----------|-------------|-----------|-------------|-----------|------------|-------------|-----------|-----------|-----------|-----------|-------------|----------|----------|--------------|-------------|
| 2020-21      | SJSU | 17-7            | 9          | 0.53        | 4          | 31          | .161        | 0         | 0.00        | 0         | 0.00        | 3         | 21         | 1.24        | 2         | 1         | 3         | 4         | 0.24        | 0        | 0        | 11.5         | 0.68        |
| 2021-22      | SJSU | 93-27           | 129        | 1.39        | 71         | 380         | .153        | 22        | 0.24        | 20        | 0.22        | 16        | 183        | 1.97        | 28        | 3         | 10        | 13        | 0.14        | 0        | 0        | 157.0        | 1.69        |
| 2022-23      | SJSU | 109-29          | 172        | 1.58        | 94         | 491         | .159        | 18        | 0.17        | 37        | 0.34        | 38        | 140        | 1.28        | 14        | 7         | 30        | 37        | 0.34        | 3        | 0        | 231.0        | 2.12        |
| 2023-24      | SJSU | 85-24           | 220        | 2.59        | 119        | 639         | .158        | 20        | 0.24        | 27        | 0.32        | 34        | 179        | 2.11        | 29        | 6         | 26        | 32        | 0.38        | 0        | 0        | 266.0        | 3.13        |
| <b>TOTAL</b> |      | <b>304 - 87</b> | <b>530</b> | <b>1.74</b> | <b>288</b> | <b>1541</b> | <b>.157</b> | <b>60</b> | <b>0.20</b> | <b>84</b> | <b>0.28</b> | <b>91</b> | <b>523</b> | <b>1.72</b> | <b>73</b> | <b>17</b> | <b>69</b> | <b>86</b> | <b>0.28</b> | <b>3</b> | <b>0</b> | <b>665.5</b> | <b>2.19</b> |



# #6 Nayeli Ti'a

**NIGH-ah-lee**  
**OH • 5-11 • R-FR**  
**Livermore, Calif./**  
**Granada HS**

| Ti'a's Season Highs  |    |                        |
|----------------------|----|------------------------|
| <b>Kills</b>         | 24 | vs. CSUN, 8-25         |
| <b>Attempts</b>      | 50 | at Fresno State, 10-26 |
| <b>Assists</b>       | 3  | Two opponents          |
| <b>Aces</b>          | 5  | at Nevada, 10-28       |
| <b>Digs</b>          | 18 | at Campbell, 9-8       |
| <b>Block Solo</b>    | 2  | at Fresno State, 10-26 |
| <b>Block Assists</b> | 5  | Two matches            |
| <b>Total Blocks</b>  | 6  | vs. CSUN, 8-25         |

- Played in all 25 matches
- Averaging 2.77 kills, 2.13 digs and 0.52 blocks per set
- Season-high 24 kills in the win over CSUN
- 10+ kills in 10 matches
- Five aces at Nevada and three aces in four matches - at Campbell, vs. UTSA, against Nevada and at Fresno State
- Five double-doubles on the season
- 10+ digs in eight matches including 18 at Campbell and 13 versus New Mexico
- Six total blocks against CSUN (1-5)
- Five block assists versus CSUN and New Mexico
- Added five total blocks at UNLV (1-4)
- Mountain West Freshman of the Week twice
  - Sept. 11 and Oct. 2
- Named to two all-tournament teams
  - San José State/Santa Clara Invitational
  - Campbell Invitational

| Date          | Opponent             | SP        | Attack     |            |            |             | Set       |           |             | Serve     |           |            |             | Recept    |            |             | Blocking   |          |           |          |             | Team     |              |      |       |
|---------------|----------------------|-----------|------------|------------|------------|-------------|-----------|-----------|-------------|-----------|-----------|------------|-------------|-----------|------------|-------------|------------|----------|-----------|----------|-------------|----------|--------------|------|-------|
|               |                      |           | K          | E          | TA         | PCT         | A         | TA        | PCT         | SA        | SE        | TA         | PCT         | RE        | TA         | PCT         | DIG        | BS       | BA        | BE       | TOTAL       | BHE      | POINTS       | HIT% | SCORE |
| 08/25/2023    | CSUN                 | *5        | 24         | 9          | 47         | .319        | 0         | 2         | .000        | 0         | 2         | 16         | .875        | 0         | 24         | 1.000       | 11         | 1        | 5         | 0        | 6.0         | 0        | 27.5         | .203 | 3-2   |
| 08/26/2023    | Jacksonville         | *3        | 7          | 4          | 20         | .150        | 1         | 4         | .250        | 1         | 1         | 13         | .923        | 0         | 21         | 1.000       | 11         | 0        | 1         | 0        | 1.0         | 0        | 8.5          | .296 | 3-0   |
| 08/27/2023    | Santa Clara          | *3        | 6          | 7          | 23         | -.043       | 0         | 1         | .000        | 0         | 0         | 5          | 1.000       | 2         | 14         | .857        | 6          | 1        | 1         | 0        | 2.0         | 0        | 7.5          | .035 | 0-3   |
| 09/01/2023    | vs Portland          | *4        | 9          | 11         | 40         | -.050       | 0         | 2         | .000        | 1         | 2         | 16         | .875        | 0         | 15         | 1.000       | 9          | 0        | 3         | 0        | 3.0         | 0        | 11.5         | .181 | 3-1   |
| 09/01/2023    | at Sacramento St.    | *4        | 4          | 4          | 14         | .000        | 0         | 2         | .000        | 1         | 0         | 10         | 1.000       | 1         | 16         | .938        | 2          | 0        | 3         | 0        | 3.0         | 0        | 6.5          | .167 | 1-3   |
| 09/02/2023    | vs Cal St. Fullerton | *2        | 2          | 2          | 12         | .000        | 0         | 2         | .000        | 0         | 1         | 5          | .800        | 3         | 17         | .824        | 8          | 0        | 0         | 0        | 0.0         | 0        | 2.0          | .213 | 3-0   |
| 09/08/2023    | at Campbell          | *4        | 16         | 3          | 35         | .371        | 3         | 6         | .500        | 3         | 4         | 19         | .789        | 1         | 18         | .944        | 18         | 0        | 1         | 0        | 1.0         | 0        | 19.5         | .233 | 3-1   |
| 09/08/2023    | vs Ga. Southern      | *3        | 14         | 4          | 26         | .385        | 2         | 6         | .333        | 0         | 2         | 10         | .800        | 2         | 27         | .926        | 9          | 0        | 0         | 0        | 0.0         | 0        | 14.0         | .101 | 0-3   |
| 09/09/2023    | vs UTSA              | *4        | 9          | 9          | 30         | .000        | 0         | 5         | .000        | 3         | 1         | 21         | .952        | 2         | 29         | .931        | 11         | 0        | 1         | 0        | 1.0         | 1        | 12.5         | .151 | 3-1   |
| 09/12/2023    | at Saint Mary's (CA) | *4        | 9          | 7          | 23         | .087        | 0         | 6         | .000        | 1         | 0         | 18         | 1.000       | 1         | 39         | .974        | 9          | 0        | 0         | 0        | 0.0         | 0        | 10.0         | .221 | 3-1   |
| 09/14/2023    | at San Francisco     | *4        | 6          | 9          | 24         | -.125       | 0         | 3         | .000        | 1         | 0         | 13         | 1.000       | 0         | 37         | 1.000       | 5          | 0        | 2         | 0        | 2.0         | 0        | 8.0          | .147 | 1-3   |
| 09/15/2023    | vs CSUN              | *3        | 8          | 7          | 20         | .050        | 0         | 2         | .000        | 0         | 2         | 12         | .833        | 3         | 18         | .833        | 11         | 0        | 1         | 0        | 1.0         | 0        | 8.5          | .252 | 3-0   |
| 09/16/2023    | vs UTRGV             | *5        | 8          | 6          | 22         | .091        | 3         | 6         | .500        | 0         | 1         | 8          | .875        | 3         | 23         | .870        | 5          | 1        | 0         | 0        | 1.0         | 0        | 9.0          | .234 | 3-2   |
| 09/21/2023    | at UNLV              | *3        | 9          | 6          | 22         | .136        | 1         | 4         | .250        | 2         | 2         | 14         | .857        | 3         | 22         | .864        | 9          | 1        | 4         | 0        | 5.0         | 0        | 14.0         | .181 | 0-3   |
| 09/23/2023    | at San Diego St.     | *4        | 13         | 5          | 27         | .296        | 0         | 4         | .000        | 0         | 1         | 19         | .947        | 1         | 27         | .963        | 5          | 0        | 3         | 0        | 3.0         | 0        | 14.5         | .194 | 1-3   |
| 09/28/2023    | Nevada               | *4        | 9          | 6          | 21         | .143        | 1         | 3         | .333        | 3         | 1         | 13         | .923        | 3         | 39         | .923        | 8          | 0        | 1         | 0        | 1.0         | 0        | 12.5         | .241 | 3-1   |
| 09/30/2023    | Fresno St.           | *4        | 14         | 7          | 33         | .212        | 0         | 1         | .000        | 0         | 0         | 5          | 1.000       | 0         | 7          | 1.000       | 2          | 0        | 1         | 0        | 1.0         | 0        | 14.5         | .146 | 3-1   |
| 10/05/2023    | at Wyoming           | *3        | 11         | 6          | 26         | .192        | 1         | 4         | .250        | 0         | 0         | 3          | 1.000       | 1         | 11         | .909        | 4          | 0        | 0         | 0        | 0.0         | 0        | 11.0         | .086 | 0-3   |
| 10/07/2023    | at Colorado St.      | 3         | 12         | 6          | 26         | .231        | 0         | 0         | .000        | 0         | 0         | 0          | .000        | 1         | 22         | .955        | 4          | 0        | 1         | 0        | 1.0         | 0        | 12.5         | .186 | 0-3   |
| 10/12/2023    | Boise St.            | *3        | 4          | 4          | 23         | .000        | 1         | 3         | .333        | 0         | 0         | 6          | 1.000       | 0         | 23         | 1.000       | 7          | 1        | 1         | 0        | 2.0         | 0        | 5.5          | .202 | 0-3   |
| 10/14/2023    | Utah St.             | *3        | 2          | 9          | 21         | -.333       | 1         | 2         | .500        | 0         | 0         | 6          | 1.000       | 4         | 10         | .600        | 6          | 0        | 2         | 0        | 2.0         | 0        | 3.0          | .052 | 0-3   |
| 10/19/2023    | New Mexico           | *4        | 18         | 14         | 47         | .085        | 1         | 4         | .250        | 0         | 3         | 18         | .833        | 2         | 26         | .923        | 13         | 0        | 5         | 0        | 5.0         | 0        | 20.5         | .155 | 1-3   |
| 10/21/2023    | at Air Force         | *3        | 9          | 2          | 18         | .389        | 0         | 1         | .000        | 0         | 0         | 6          | 1.000       | 0         | 15         | 1.000       | 2          | 0        | 2         | 0        | 2.0         | 0        | 10.0         | .169 | 0-3   |
| 10/26/2023    | at Fresno St.        | *5        | 17         | 12         | 50         | .100        | 1         | 7         | .143        | 3         | 3         | 15         | .800        | 1         | 22         | .955        | 10         | 2        | 2         | 1        | 4.0         | 0        | 23.0         | .102 | 3-2   |
| 10/28/2023    | at Nevada            | *5        | 15         | 12         | 43         | .070        | 0         | 5         | .000        | 5         | 1         | 19         | .947        | 1         | 26         | .962        | 11         | 0        | 1         | 1        | 1.0         | 0        | 20.5         | .164 | 2-3   |
| <b>Totals</b> |                      | <b>92</b> | <b>255</b> | <b>171</b> | <b>693</b> | <b>.121</b> | <b>16</b> | <b>85</b> | <b>.188</b> | <b>24</b> | <b>27</b> | <b>290</b> | <b>.907</b> | <b>35</b> | <b>548</b> | <b>.936</b> | <b>196</b> | <b>7</b> | <b>41</b> | <b>2</b> | <b>48.0</b> | <b>1</b> | <b>306.5</b> |      |       |

**Player Averages**

| Sets Played | Kills per set | Assists per set | Service aces per set | Digs per set | Blocks per set | Points per set |
|-------------|---------------|-----------------|----------------------|--------------|----------------|----------------|
| 92          | 2.77          | 0.17            | 0.26                 | 2.13         | 0.52           | 3.33           |

| SEASON       | TEAM | SM-MP          | K          | K/S         | E          | TA         | PCT         | A         | A/S         | SA        | SA/S        | SE        | DIG        | D/S         | RE        | BS       | BA        | TB        | B/S         | BE       | BHE      | PTS          | PTS/S       |
|--------------|------|----------------|------------|-------------|------------|------------|-------------|-----------|-------------|-----------|-------------|-----------|------------|-------------|-----------|----------|-----------|-----------|-------------|----------|----------|--------------|-------------|
| 2023-24      | SJSU | 92-25          | 255        | 2.77        | 171        | 693        | .121        | 16        | 0.17        | 24        | 0.26        | 27        | 196        | 2.13        | 35        | 7        | 41        | 48        | 0.52        | 2        | 1        | 306.5        | 3.33        |
| <b>TOTAL</b> |      | <b>92 - 25</b> | <b>255</b> | <b>2.77</b> | <b>171</b> | <b>693</b> | <b>.121</b> | <b>16</b> | <b>0.17</b> | <b>24</b> | <b>0.26</b> | <b>27</b> | <b>196</b> | <b>2.13</b> | <b>35</b> | <b>7</b> | <b>41</b> | <b>48</b> | <b>0.52</b> | <b>2</b> | <b>1</b> | <b>306.5</b> | <b>3.33</b> |



**#8**  
**Lauren**  
**Conroy**  
**DS/L • 5-5 • SR**  
**Naperville, Ill./**  
**Neuqua Valley HS**

- Played in six matches
- Two assists and one dig in a win against Nevada
- Two digs at Air Force

| Conroy's Season Highs |                       |
|-----------------------|-----------------------|
| Kills                 | -- --                 |
| Attempts              | -- --                 |
| Assists               | 2 vs. Nevada, 9-28    |
| Aces                  | -- --                 |
| Digs                  | 1 at Air Force, 10-21 |
| Block Solo            | -- --                 |
| Block Assists         | -- --                 |
| Total Blocks          | -- --                 |

| Conroy's Career Highs |                          |
|-----------------------|--------------------------|
| Kills                 | -- --                    |
| Attempts              | -- --                    |
| Assists               | 2 vs. Nevada, 9-28-23    |
| Aces                  | -- --                    |
| Digs                  | 2 at Air Force, 10-21-23 |
| Block Solo            | -- --                    |
| Block Assists         | -- --                    |
| Total Blocks          | -- --                    |

| Date          | Opponent          | SP       | Attack   |          |          |             | Set      |          |             | Serve    |          |           |             | Recept   |          |              | Blocking |          |          |          | Team     |          |          |          |            |          |            |      |      |     |
|---------------|-------------------|----------|----------|----------|----------|-------------|----------|----------|-------------|----------|----------|-----------|-------------|----------|----------|--------------|----------|----------|----------|----------|----------|----------|----------|----------|------------|----------|------------|------|------|-----|
|               |                   |          | K        | E        | TA       | PCT         | A        | TA       | PCT         | SA       | SE       | TA        | PCT         | RE       | TA       | PCT          | DIG      | BS       | BA       | BE       | TOTAL    | BHE      | POINTS   | HIT%     | SCORE      |          |            |      |      |     |
| 08/25/2023    | CSUN              | 1        | 0        | 0        | 0        | .000        | 0        | 0        | .000        | 0        | 0        | 1         | 1.000       | 0        | 0        | .000         | 0        | 0        | 0        | 0        | 0        | 0        | 0        | 0        | 0          | 0.0      | 0          | 0.0  | .203 | 3-2 |
| 09/01/2023    | at Sacramento St. | 1        | 0        | 0        | 0        | .000        | 0        | 0        | .000        | 0        | 0        | 1         | 1.000       | 0        | 0        | .000         | 0        | 0        | 0        | 0        | 0        | 0        | 0        | 0        | 0          | 0.0      | 0          | 0.0  | .167 | 1-3 |
| 09/23/2023    | at San Diego St.  | 1        | 0        | 0        | 0        | .000        | 0        | 0        | .000        | 0        | 1        | 2         | .500        | 0        | 3        | 1.000        | 0        | 0        | 0        | 0        | 0        | 0        | 0        | 0        | 0.0        | 0        | 0.0        | .194 | 1-3  |     |
| 09/28/2023    | Nevada            | *1       | 0        | 0        | 0        | .000        | 2        | 4        | .500        | 0        | 0        | 2         | 1.000       | 0        | 0        | .000         | 1        | 0        | 0        | 0        | 0        | 0        | 0        | 0        | 0.0        | 0        | 0.0        | .241 | 3-1  |     |
| 10/14/2023    | Utah St.          | 1        | 0        | 0        | 0        | .000        | 0        | 0        | .000        | 0        | 1        | 1         | .000        | 0        | 0        | .000         | 0        | 0        | 0        | 0        | 0        | 0        | 0        | 0        | 0.0        | 0        | 0.0        | .052 | 0-3  |     |
| 10/21/2023    | at Air Force      | 1        | 0        | 0        | 0        | .000        | 0        | 1        | .000        | 0        | 0        | 3         | 1.000       | 0        | 1        | 1.000        | 2        | 0        | 0        | 0        | 0        | 0        | 0        | 0        | 0.0        | 0        | 0.0        | .169 | 0-3  |     |
| <b>Totals</b> |                   | <b>6</b> | <b>0</b> | <b>0</b> | <b>0</b> | <b>.000</b> | <b>2</b> | <b>5</b> | <b>.400</b> | <b>0</b> | <b>2</b> | <b>10</b> | <b>.800</b> | <b>0</b> | <b>4</b> | <b>1.000</b> | <b>3</b> | <b>0</b> | <b>0</b> | <b>0</b> | <b>0</b> | <b>0</b> | <b>0</b> | <b>0</b> | <b>0.0</b> | <b>0</b> | <b>0.0</b> |      |      |     |

Player Averages

| Sets Played | Kills per set | Assists per set | Service aces per set | Digs per set | Blocks per set | Points per set |
|-------------|---------------|-----------------|----------------------|--------------|----------------|----------------|
| 6           | 0.00          | 0.33            | 0.00                 | 0.50         | 0.00           | 0.00           |

| SEASON       | TEAM | SM-MP        | K        | K/S         | E        | TA       | PCT         | A        | A/S         | SA       | SA/S        | SE       | DIG      | D/S         | RE       | BS       | BA       | TB       | B/S         | BE       | BHE      | PTS        | PTS/S       |
|--------------|------|--------------|----------|-------------|----------|----------|-------------|----------|-------------|----------|-------------|----------|----------|-------------|----------|----------|----------|----------|-------------|----------|----------|------------|-------------|
| 2021-22      | SJSU | 2-1          | 0        | 0.00        | 0        | 0        | .000        | 0        | 0.00        | 0        | 0.00        | 0        | 0        | 0.00        | 0        | 0        | 0        | 0        | 0.00        | 0        | 0        | 0.0        | 0.00        |
| 2023-24      | SJSU | 6-6          | 0        | 0.00        | 0        | 0        | .000        | 2        | 0.33        | 0        | 0.00        | 2        | 3        | 0.50        | 0        | 0        | 0        | 0        | 0.00        | 0        | 0        | 0.0        | 0.00        |
| <b>TOTAL</b> |      | <b>8 - 7</b> | <b>0</b> | <b>0.00</b> | <b>0</b> | <b>0</b> | <b>.000</b> | <b>2</b> | <b>0.25</b> | <b>0</b> | <b>0.00</b> | <b>2</b> | <b>3</b> | <b>0.38</b> | <b>0</b> | <b>0</b> | <b>0</b> | <b>0</b> | <b>0.00</b> | <b>0</b> | <b>0</b> | <b>0.0</b> | <b>0.00</b> |



**#9**  
**Selin**  
**Ozdemir**  
**OH • 6-0 • FR**  
**Cankaya-Ankara**  
**Turkey/**  
**TED Ankara Koleji**

| Ozdemir's Season Highs |    |                          |
|------------------------|----|--------------------------|
| Kills                  | 10 | at Nevada, 10-28         |
| Attempts               | 18 | at Nevada, 10-28         |
| Assists                | 1  | at Air Force, 10-21      |
| Aces                   | 1  | at San Diego State, 9-23 |
| Digs                   | 9  | at Nevada, 10-28         |
| Block Solo             | -- | --                       |
| Block Assists          | 1  | Two opponents            |
| Total Blocks           | 1  | Two opponents            |

- Played in 12 matches and 23 sets
- Best match of season at Nevada where she hit .389
- Had 10 kills on 18 attempts and only three errors
- Added nine digs and a block at Nevada
- Two kills at Fresno State and one kill against UTRGV, Nevada and Fresno State
- One assist at Air Force
- Only ace at San Diego State
- Two digs at Saint Mary's and versus UTRGV
- One block assist against UTRGV and at Nevada

| Date          | Opponent             | SP        | Attack    |          |           |             | Set      |          | Serve       |          |          |           | Receipt     |          |           | Blocking    |           |          |          | Team     |          |          |          |          |          |          |          |          |          |             |      |      |     |
|---------------|----------------------|-----------|-----------|----------|-----------|-------------|----------|----------|-------------|----------|----------|-----------|-------------|----------|-----------|-------------|-----------|----------|----------|----------|----------|----------|----------|----------|----------|----------|----------|----------|----------|-------------|------|------|-----|
|               |                      |           | K         | E        | TA        | PCT         | A        | TA       | PCT         | SA       | SE       | TA        | PCT         | RE       | TA        | PCT         | DIG       | BS       | BA       | BE       | TOTAL    | BHE      | POINTS   | HIT%     | SCORE    |          |          |          |          |             |      |      |     |
| 09/01/2023    | at Sacramento St.    | 1         | 0         | 0        | 1         | .000        | 0        | 0        | .000        | 0        | 0        | 0         | .000        | 0        | 0         | .000        | 0         | 0        | 0        | 0        | 0        | 0        | 0        | 0        | 0        | 0        | 0        | 0        | 0        | 0           | 0    | .167 | 1-3 |
| 09/12/2023    | at Saint Mary's (CA) | 1         | 0         | 0        | 1         | .000        | 0        | 0        | .000        | 0        | 0        | 0         | .000        | 0        | 1         | 1.000       | 2         | 0        | 0        | 0        | 0        | 0        | 0        | 0        | 0        | 0        | 0        | 0        | 0        | 0           | 0    | .221 | 3-1 |
| 09/14/2023    | at San Francisco     | 2         | 0         | 0        | 0         | .000        | 0        | 1        | .000        | 0        | 0        | 1         | 1.000       | 0        | 4         | 1.000       | 1         | 0        | 0        | 0        | 0        | 0        | 0        | 0        | 0        | 0        | 0        | 0        | 0        | 0           | 0    | .147 | 1-3 |
| 09/16/2023    | vs UTRGV             | 2         | 1         | 0        | 3         | .333        | 0        | 0        | .000        | 0        | 0        | 3         | 1.000       | 1        | 5         | .800        | 2         | 0        | 1        | 0        | 1        | 0        | 0        | 0        | 0        | 0        | 0        | 0        | 0        | 0           | 1.5  | .234 | 3-2 |
| 09/23/2023    | at San Diego St.     | 2         | 0         | 1        | 2         | -.500       | 0        | 1        | .000        | 1        | 0        | 2         | 1.000       | 0        | 2         | 1.000       | 0         | 0        | 0        | 0        | 0        | 0        | 0        | 0        | 0        | 0        | 0        | 0        | 0        | 0           | 1.0  | .194 | 1-3 |
| 09/28/2023    | Nevada               | 1         | 1         | 0        | 1         | 1.000       | 0        | 0        | .000        | 0        | 0        | 1         | 1.000       | 0        | 1         | 1.000       | 1         | 0        | 0        | 0        | 0        | 0        | 0        | 0        | 0        | 0        | 0        | 0        | 0        | 1.0         | .241 | 3-1  |     |
| 09/30/2023    | Fresno St.           | 1         | 1         | 0        | 1         | 1.000       | 0        | 1        | .000        | 0        | 0        | 1         | 1.000       | 0        | 3         | 1.000       | 0         | 0        | 0        | 0        | 0        | 0        | 0        | 0        | 0        | 0        | 0        | 0        | 0        | 1.0         | .146 | 3-1  |     |
| 10/12/2023    | Boise St.            | 1         | 0         | 0        | 1         | .000        | 0        | 0        | .000        | 0        | 0        | 0         | .000        | 2        | 7         | .714        | 0         | 0        | 0        | 0        | 0        | 0        | 0        | 0        | 0        | 0        | 0        | 0        | 0        | 0           | 0    | .202 | 0-3 |
| 10/14/2023    | Utah St.             | 2         | 0         | 0        | 1         | .000        | 0        | 0        | .000        | 0        | 0        | 0         | .000        | 0        | 0         | .000        | 0         | 0        | 0        | 0        | 0        | 0        | 0        | 0        | 0        | 0        | 0        | 0        | 0        | 0           | 0    | .052 | 0-3 |
| 10/21/2023    | at Air Force         | 1         | 0         | 1        | 3         | -.333       | 1        | 1        | 1.000       | 0        | 0        | 0         | .000        | 0        | 4         | 1.000       | 1         | 0        | 0        | 0        | 0        | 0        | 0        | 0        | 0        | 0        | 0        | 0        | 0        | 0           | 0    | .169 | 0-3 |
| 10/26/2023    | at Fresno St.        | 4         | 2         | 1        | 8         | .125        | 0        | 1        | .000        | 0        | 1        | 2         | .500        | 0        | 13        | 1.000       | 1         | 0        | 0        | 0        | 0        | 0        | 0        | 0        | 0        | 0        | 0        | 0        | 0        | 2.0         | .102 | 3-2  |     |
| 10/28/2023    | at Nevada            | 5         | 10        | 3        | 18        | .389        | 0        | 2        | .000        | 0        | 1        | 9         | .889        | 0        | 18        | 1.000       | 9         | 0        | 1        | 1        | 1        | 0        | 0        | 0        | 0        | 0        | 0        | 0        | 0        | 10.5        | .164 | 2-3  |     |
| <b>Totals</b> |                      | <b>23</b> | <b>15</b> | <b>6</b> | <b>40</b> | <b>.225</b> | <b>1</b> | <b>7</b> | <b>.143</b> | <b>1</b> | <b>2</b> | <b>19</b> | <b>.895</b> | <b>3</b> | <b>58</b> | <b>.948</b> | <b>17</b> | <b>0</b> | <b>2</b> | <b>1</b> | <b>2</b> | <b>0</b> | <b>0</b> | <b>0</b> | <b>0</b> | <b>0</b> | <b>0</b> | <b>0</b> | <b>0</b> | <b>17.0</b> |      |      |     |

**Player Averages**

| Sets Played | Kills per set | Assists per set | Service aces per set | Digs per set | Blocks per set | Points per set |
|-------------|---------------|-----------------|----------------------|--------------|----------------|----------------|
| 23          | 0.65          | 0.04            | 0.04                 | 0.74         | 0.09           | 0.74           |

| SEASON       | TEAM | SM-MP          | K         | K/S         | E        | TA        | PCT         | A        | A/S         | SA       | SA/S        | SE       | DIG       | D/S         | RE       | BS       | BA       | TB       | B/S         | BE       | BHE      | PTS         | PTS/S       |
|--------------|------|----------------|-----------|-------------|----------|-----------|-------------|----------|-------------|----------|-------------|----------|-----------|-------------|----------|----------|----------|----------|-------------|----------|----------|-------------|-------------|
| 2023-24      | SJSU | 23-12          | 15        | 0.65        | 6        | 40        | .225        | 1        | 0.04        | 1        | 0.04        | 2        | 17        | 0.74        | 3        | 0        | 2        | 2        | 0.09        | 1        | 0        | 17.0        | 0.74        |
| <b>TOTAL</b> |      | <b>23 - 12</b> | <b>15</b> | <b>0.65</b> | <b>6</b> | <b>40</b> | <b>.225</b> | <b>1</b> | <b>0.04</b> | <b>1</b> | <b>0.04</b> | <b>2</b> | <b>17</b> | <b>0.74</b> | <b>3</b> | <b>0</b> | <b>2</b> | <b>2</b> | <b>0.09</b> | <b>1</b> | <b>0</b> | <b>17.0</b> | <b>0.74</b> |



# #10 Brooke Slusser S • 5-11 • JR Denton, Texas/ Alabama

| Slusser's Season Highs |    |                        |
|------------------------|----|------------------------|
| Kills                  | 11 | vs. Nevada, 9-28       |
| Attempts               | 25 | at Fresno State, 10-26 |
| Assists                | 47 | vs. CSUN, 8-25         |
| Aces                   | 4  | vs. Jacksonville, 8-26 |
| Digs                   | 18 | vs. CSUN, 8-25         |
| Block Solo             | 1  | vs. Utah State, 10-14  |
| Block Assists          | 3  | Two opponents          |
| Total Blocks           | 3  | Two opponents          |

| Slusser's Collegiate Career Highs |    |                          |
|-----------------------------------|----|--------------------------|
| Kills                             | 11 | vs. Nevada, 9-28-23      |
| Attempts                          | 23 | vs. Nevada, 9-28-23      |
| Assists                           | 49 | at Missouri, 10-13-21    |
| Aces                              | 4  | Three opponents          |
| Digs                              | 18 | vs. CSUN, 8-25-23        |
| Block Solo                        | 1  | Two opponents            |
| Block Assists                     | 5  | vs. Texas State, 9-17-22 |
| Total Blocks                      | 5  | vs. Texas State, 9-17-22 |

- Spartans starting setter
- Averaging 6.88 assists, 2.13 digs, 0.30 aces and 0.62 kills per set
- Season-high 47 assists in win over CSUN to start the year
- 40 assists at Nevada and 35 assists in wins over Jacksonville and Nevada
- Five double-doubles on the season
- 11 kills against Nevada and seven kills at Nevada
- Five kills at Colorado State and at Fresno State
- Four aces against Jacksonville and three against Cal State Fullerton, Nevada and New Mexico
- Three block assists in wins over CSUN and Fresno State

| Date          | Opponent             | SP | Attack    |           |           |            | Set         |            |             | Serve       |           |           |            | Recept      |          |          | Blocking    |            |          |           | Team     |             |          |             |       |
|---------------|----------------------|----|-----------|-----------|-----------|------------|-------------|------------|-------------|-------------|-----------|-----------|------------|-------------|----------|----------|-------------|------------|----------|-----------|----------|-------------|----------|-------------|-------|
|               |                      |    | K         | E         | TA        | PCT        | A           | TA         | PCT         | SA          | SE        | TA        | PCT        | RE          | TA       | PCT      | DIG         | BS         | BA       | BE        | TOTAL    | BHE         | POINTS   | HIT%        | SCORE |
| 08/25/2023    | CSUN                 | *5 | 3         | 2         | 8         | .125       | 47          | 119        | .395        | 0           | 3         | 15        | .800       | 0           | 0        | .000     | 18          | 0          | 3        | 0         | 3.0      | 0           | 4.5      | .203        | 3-2   |
| 08/26/2023    | Jacksonville         | *3 | 2         | 1         | 6         | .167       | 35          | 81         | .432        | 4           | 1         | 14        | .929       | 0           | 0        | .000     | 5           | 0          | 1        | 0         | 1.0      | 0           | 6.5      | .296        | 3-0   |
| 08/27/2023    | Santa Clara          | *3 | 3         | 0         | 5         | .600       | 20          | 72         | .278        | 2           | 2         | 12        | .833       | 0           | 0        | .000     | 5           | 0          | 2        | 0         | 2.0      | 0           | 6.0      | .035        | 0-3   |
| 09/01/2023    | vs Portland          | *4 | 0         | 0         | 1         | .000       | 30          | 82         | .366        | 1           | 1         | 19        | .947       | 0           | 0        | .000     | 6           | 0          | 1        | 0         | 1.0      | 1           | 1.5      | .181        | 3-1   |
| 09/01/2023    | at Sacramento St.    | *4 | 1         | 0         | 2         | .500       | 25          | 73         | .342        | 2           | 1         | 13        | .923       | 0           | 1        | 1.000    | 8           | 0          | 0        | 0         | 0.0      | 0           | 3.0      | .167        | 1-3   |
| 09/02/2023    | vs Cal St. Fullerton | *3 | 4         | 0         | 8         | .500       | 26          | 64         | .406        | 3           | 2         | 19        | .895       | 0           | 0        | .000     | 5           | 0          | 0        | 0         | 0.0      | 0           | 7.0      | .213        | 3-0   |
| 09/08/2023    | at Campbell          | *4 | 0         | 0         | 1         | .000       | 20          | 64         | .313        | 1           | 0         | 16        | 1.000      | 0           | 0        | .000     | 8           | 0          | 0        | 0         | 0.0      | 1           | 1.0      | .233        | 3-1   |
| 09/08/2023    | vs Ga. Southern      | 3  | 1         | 0         | 1         | 1.000      | 15          | 47         | .319        | 1           | 0         | 13        | 1.000      | 0           | 0        | .000     | 9           | 0          | 0        | 0         | 0.0      | 1           | 2.0      | .101        | 0-3   |
| 09/09/2023    | vs UTSA              | 4  | 0         | 0         | 1         | .000       | 19          | 49         | .388        | 1           | 1         | 14        | .929       | 0           | 0        | .000     | 7           | 0          | 0        | 0         | 0.0      | 0           | 1.0      | .151        | 3-1   |
| 09/12/2023    | at Saint Mary's (CA) | *4 | 0         | 1         | 3         | -.333      | 20          | 57         | .351        | 0           | 1         | 14        | .929       | 0           | 0        | .000     | 7           | 0          | 0        | 0         | 0.0      | 0           | 0.0      | .221        | 3-1   |
| 09/14/2023    | at San Francisco     | *4 | 0         | 0         | 5         | .000       | 21          | 63         | .333        | 0           | 0         | 18        | 1.000      | 0           | 3        | 1.000    | 8           | 0          | 0        | 0         | 0.0      | 0           | 0.0      | .147        | 1-3   |
| 09/15/2023    | vs CSUN              | 3  | 0         | 0         | 0         | .000       | 19          | 41         | .463        | 1           | 0         | 9         | 1.000      | 0           | 0        | .000     | 7           | 0          | 0        | 0         | 0.0      | 0           | 1.0      | .252        | 3-0   |
| 09/16/2023    | vs UTRGV             | 5  | 0         | 0         | 3         | .000       | 25          | 71         | .352        | 1           | 1         | 19        | .947       | 0           | 0        | .000     | 8           | 0          | 0        | 0         | 0.0      | 0           | 1.0      | .234        | 3-2   |
| 09/21/2023    | at UNLV              | *3 | 4         | 1         | 17        | .176       | 15          | 52         | .288        | 1           | 1         | 17        | .941       | 0           | 0        | .000     | 6           | 0          | 2        | 2         | 2.0      | 0           | 6.0      | .181        | 0-3   |
| 09/23/2023    | at San Diego St.     | *4 | 2         | 2         | 8         | .000       | 37          | 94         | .394        | 0           | 1         | 15        | .933       | 0           | 0        | .000     | 5           | 0          | 1        | 1         | 1.0      | 0           | 2.5      | .194        | 1-3   |
| 09/28/2023    | Nevada               | *4 | 11        | 0         | 23        | .478       | 35          | 78         | .449        | 3           | 2         | 23        | .913       | 0           | 0        | .000     | 9           | 0          | 0        | 0         | 0.0      | 1           | 14.0     | .241        | 3-1   |
| 09/30/2023    | Fresno St.           | *4 | 3         | 3         | 14        | .000       | 26          | 79         | .329        | 1           | 2         | 15        | .867       | 0           | 1        | 1.000    | 14          | 0          | 3        | 0         | 3.0      | 1           | 5.5      | .146        | 3-1   |
| 10/05/2023    | at Wyoming           | *3 | 1         | 3         | 6         | -.333      | 28          | 87         | .322        | 0           | 2         | 10        | .800       | 0           | 1        | 1.000    | 8           | 0          | 1        | 1         | 1.0      | 0           | 1.5      | .086        | 0-3   |
| 10/07/2023    | at Colorado St.      | *3 | 5         | 2         | 15        | .200       | 17          | 54         | .315        | 0           | 0         | 10        | 1.000      | 0           | 0        | .000     | 7           | 0          | 0        | 0         | 0.0      | 0           | 5.0      | .186        | 0-3   |
| 10/12/2023    | Boise St.            | *3 | 2         | 1         | 7         | .143       | 30          | 85         | .353        | 1           | 1         | 15        | .933       | 0           | 0        | .000     | 6           | 0          | 1        | 0         | 1.0      | 0           | 3.5      | .202        | 0-3   |
| 10/14/2023    | Utah St.             | *3 | 2         | 0         | 9         | .222       | 19          | 72         | .264        | 0           | 1         | 6         | .833       | 0           | 1        | 1.000    | 6           | 1          | 1        | 0         | 2.0      | 0           | 3.5      | .052        | 0-3   |
| 10/19/2023    | New Mexico           | *4 | 1         | 0         | 4         | .250       | 23          | 74         | .311        | 3           | 2         | 19        | .895       | 0           | 0        | .000     | 9           | 0          | 0        | 0         | 0.0      | 0           | 4.0      | .155        | 1-3   |
| 10/21/2023    | at Air Force         | *3 | 1         | 1         | 3         | .000       | 22          | 61         | .361        | 0           | 1         | 9         | .889       | 0           | 1        | 1.000    | 6           | 0          | 0        | 0         | 0.0      | 0           | 1.0      | .169        | 0-3   |
| 10/26/2023    | at Fresno St.        | *5 | 5         | 4         | 25        | .040       | 26          | 85         | .306        | 2           | 1         | 16        | .938       | 0           | 0        | .000     | 10          | 0          | 2        | 1         | 2.0      | 0           | 8.0      | .102        | 3-2   |
| 10/28/2023    | at Nevada            | *5 | 7         | 0         | 11        | .636       | 40          | 119        | .336        | 0           | 3         | 14        | .786       | 1           | 1        | .000     | 11          | 0          | 1        | 0         | 1.0      | 0           | 7.5      | .164        | 2-3   |
| <b>Totals</b> |                      |    | <b>93</b> | <b>58</b> | <b>21</b> | <b>186</b> | <b>.199</b> | <b>640</b> | <b>1823</b> | <b>.351</b> | <b>28</b> | <b>30</b> | <b>364</b> | <b>.918</b> | <b>1</b> | <b>9</b> | <b>.889</b> | <b>198</b> | <b>1</b> | <b>19</b> | <b>5</b> | <b>20.0</b> | <b>5</b> | <b>96.5</b> |       |

Player Averages

| Sets Played | Kills per set | Assists per set | Service aces per set | Digs per set | Blocks per set | Points per set |
|-------------|---------------|-----------------|----------------------|--------------|----------------|----------------|
| 93          | 0.62          | 6.88            | 0.30                 | 2.13         | 0.22           | 1.04           |

| SEASON                | TEAM | SM-MP           | K         | K/S         | E         | TA         | PCT         | A           | A/S         | SA        | SA/S        | SE        | DIG        | D/S         | RE       | BS       | BA        | TB        | B/S         | BE        | BHE       | PTS          | PTS/S       |
|-----------------------|------|-----------------|-----------|-------------|-----------|------------|-------------|-------------|-------------|-----------|-------------|-----------|------------|-------------|----------|----------|-----------|-----------|-------------|-----------|-----------|--------------|-------------|
| 2021-22               | Bama | 99-29           | 17        | 0.17        | 6         | 43         | .256        | 633         | 6.39        | 22        | 0.22        | 18        | 154        | 1.56        | 0        | 1        | 15        | 16        | 0.16        | 8         | 9         | 47.5         | 0.48        |
| 2022-23               | Bama | 48-13           | 19        | 0.40        | 8         | 50         | .220        | 458         | 9.54        | 17        | 0.35        | 38        | 116        | 2.42        | 0        | 0        | 30        | 30        | 0.63        | 11        | 10        | 51.0         | 1.06        |
| 2023-24               | SJSU | 93-25           | 58        | 0.62        | 21        | 186        | .199        | 640         | 6.88        | 28        | 0.30        | 30        | 198        | 2.13        | 1        | 1        | 19        | 20        | 0.22        | 5         | 5         | 96.5         | 1.04        |
| <b>TOTAL FOR SJSU</b> |      | <b>93 - 25</b>  | <b>58</b> | <b>0.62</b> | <b>21</b> | <b>186</b> | <b>.199</b> | <b>640</b>  | <b>6.88</b> | <b>28</b> | <b>0.30</b> | <b>30</b> | <b>198</b> | <b>2.13</b> | <b>1</b> | <b>1</b> | <b>19</b> | <b>20</b> | <b>0.22</b> | <b>5</b>  | <b>5</b>  | <b>96.5</b>  | <b>1.04</b> |
| <b>TOTAL</b>          |      | <b>240 - 67</b> | <b>94</b> | <b>0.39</b> | <b>35</b> | <b>279</b> | <b>.211</b> | <b>1731</b> | <b>7.21</b> | <b>67</b> | <b>0.28</b> | <b>86</b> | <b>468</b> | <b>1.95</b> | <b>1</b> | <b>2</b> | <b>64</b> | <b>66</b> | <b>0.28</b> | <b>24</b> | <b>24</b> | <b>195.0</b> | <b>0.81</b> |



#11  
**Mari Lawton**  
 MB • 6-0 • FR  
 Mililani, Hawaii/  
 Iolani HS

| Lawton's Season Highs |                             |
|-----------------------|-----------------------------|
| <b>Kills</b>          | 7 vs. UTRGV, 9-16           |
| <b>Attempts</b>       | 15 at San Diego State, 9-23 |
| <b>Assists</b>        | 1 Five opponents            |
| <b>Aces</b>           | -- --                       |
| <b>Digs</b>           | 4 vs. New Mexico, 10-19     |
| <b>Block Solo</b>     | 1 Three opponents           |
| <b>Block Assists</b>  | 6 Two opponents             |
| <b>Total Blocks</b>   | 7 vs. New Mexico, 10-19     |

- Played in 21 matches and 52 sets
- Averaging 1.02 kills and 0.75 blocks per set
- Seven kills against UTRGV and six kills in a win over Nevada
- Seven blocks, one solo and six assists, against New Mexico
- Six block assists at UNLV
- Four block assists against Portland and at San Diego State
- Four digs against New Mexico

| Date          | Opponent             | SP        | Attack    |           |            |             | Set      |           |             | Serve    |          |           |             | Recept   |          |             | Blocking  |          |           |          | Team        |          |             |      |       |
|---------------|----------------------|-----------|-----------|-----------|------------|-------------|----------|-----------|-------------|----------|----------|-----------|-------------|----------|----------|-------------|-----------|----------|-----------|----------|-------------|----------|-------------|------|-------|
|               |                      |           | K         | E         | TA         | PCT         | A        | TA        | PCT         | SA       | SE       | TA        | PCT         | RE       | TA       | PCT         | DIG       | BS       | BA        | BE       | TOTAL       | BHE      | POINTS      | HIT% | SCORE |
| 08/27/2023    | Santa Clara          | 1         | 0         | 0         | 0          | .000        | 0        | 0         | .000        | 0        | 0        | 0         | .000        | 0        | 0        | .000        | 0         | 0        | 1         | 0        | 1.0         | 0        | 0.5         | .035 | 0-3   |
| 09/01/2023    | vs Portland          | 3         | 3         | 2         | 6          | .167        | 0        | 0         | .000        | 0        | 0        | 0         | .000        | 0        | 1        | 1.000       | 1         | 0        | 4         | 0        | 4.0         | 0        | 5.0         | .181 | 3-1   |
| 09/01/2023    | at Sacramento St.    | 1         | 0         | 1         | 3          | -.333       | 0        | 0         | .000        | 0        | 0        | 0         | .000        | 0        | 0        | .000        | 0         | 0        | 0         | 0        | 0.0         | 0        | 0.0         | .167 | 1-3   |
| 09/08/2023    | at Campbell          | 2         | 3         | 1         | 11         | .182        | 0        | 0         | .000        | 0        | 0        | 0         | .000        | 0        | 0        | .000        | 0         | 0        | 2         | 1        | 2.0         | 0        | 4.0         | .233 | 3-1   |
| 09/08/2023    | vs Ga. Southern      | *3        | 5         | 2         | 12         | .250        | 0        | 1         | .000        | 0        | 0        | 0         | .000        | 0        | 0        | .000        | 1         | 0        | 3         | 1        | 3.0         | 0        | 6.5         | .101 | 0-3   |
| 09/09/2023    | vs UTSA              | 1         | 3         | 0         | 5          | .600        | 0        | 0         | .000        | 0        | 0        | 0         | .000        | 0        | 0        | .000        | 0         | 0        | 0         | 0        | 0.0         | 0        | 3.0         | .151 | 3-1   |
| 09/12/2023    | at Saint Mary's (CA) | 1         | 0         | 0         | 0          | .000        | 0        | 0         | .000        | 0        | 0        | 0         | .000        | 0        | 0        | .000        | 0         | 0        | 0         | 0        | 0.0         | 0        | 0.0         | .221 | 3-1   |
| 09/14/2023    | at San Francisco     | 3         | 1         | 1         | 3          | .000        | 1        | 2         | .500        | 0        | 0        | 0         | .000        | 1        | 2        | .500        | 1         | 0        | 0         | 0        | 0.0         | 0        | 1.0         | .147 | 1-3   |
| 09/15/2023    | vs CSUN              | 1         | 1         | 0         | 2          | .500        | 0        | 1         | .000        | 0        | 0        | 0         | .000        | 0        | 0        | .000        | 0         | 1        | 1         | 0        | 2.0         | 0        | 2.5         | .252 | 3-0   |
| 09/16/2023    | vs UTRGV             | *5        | 7         | 0         | 8          | .875        | 0        | 1         | .000        | 0        | 0        | 0         | .000        | 0        | 0        | .000        | 0         | 0        | 3         | 0        | 3.0         | 0        | 8.5         | .234 | 3-2   |
| 09/21/2023    | at UNLV              | *3        | 5         | 0         | 6          | .833        | 1        | 3         | .333        | 0        | 0        | 0         | .000        | 0        | 0        | .000        | 0         | 0        | 6         | 0        | 6.0         | 0        | 8.0         | .181 | 0-3   |
| 09/23/2023    | at San Diego St.     | *4        | 4         | 6         | 15         | -.133       | 0        | 1         | .000        | 0        | 0        | 0         | .000        | 0        | 0        | .000        | 1         | 0        | 4         | 0        | 4.0         | 0        | 6.0         | .194 | 1-3   |
| 09/28/2023    | Nevada               | *4        | 6         | 3         | 14         | .214        | 0        | 2         | .000        | 0        | 1        | 4         | .750        | 0        | 0        | .000        | 0         | 0        | 1         | 0        | 1.0         | 0        | 6.5         | .241 | 3-1   |
| 09/30/2023    | Fresno St.           | *3        | 0         | 1         | 5          | -.200       | 0        | 0         | .000        | 0        | 0        | 0         | .000        | 0        | 0        | .000        | 0         | 1        | 0         | 0        | 1.0         | 0        | 1.0         | .146 | 3-1   |
| 10/05/2023    | at Wyoming           | 1         | 2         | 1         | 4          | .250        | 0        | 1         | .000        | 0        | 0        | 0         | .000        | 0        | 0        | .000        | 0         | 0        | 1         | 0        | 1.0         | 0        | 2.5         | .086 | 0-3   |
| 10/14/2023    | Utah St.             | 2         | 2         | 0         | 4          | .500        | 0        | 0         | .000        | 0        | 0        | 0         | .000        | 0        | 1        | 1.000       | 0         | 0        | 0         | 0        | 0.0         | 0        | 2.0         | .052 | 0-3   |
| 10/19/2023    | New Mexico           | *4        | 4         | 1         | 11         | .273        | 1        | 2         | .500        | 0        | 0        | 10        | 1.000       | 0        | 0        | .000        | 4         | 1        | 6         | 0        | 7.0         | 0        | 8.0         | .155 | 1-3   |
| 10/21/2023    | at Air Force         | 3         | 1         | 3         | 5          | -.400       | 0        | 0         | .000        | 0        | 0        | 5         | 1.000       | 0        | 1        | 1.000       | 0         | 0        | 0         | 0        | 0.0         | 0        | 1.0         | .169 | 0-3   |
| 10/26/2023    | at Fresno St.        | *4        | 3         | 1         | 8          | .250        | 1        | 3         | .333        | 0        | 0        | 0         | .000        | 0        | 0        | .000        | 1         | 0        | 2         | 1        | 2.0         | 0        | 4.0         | .102 | 3-2   |
| 10/28/2023    | at Nevada            | *3        | 3         | 0         | 5          | .600        | 1        | 1         | 1.000       | 0        | 0        | 0         | .000        | 0        | 1        | 1.000       | 1         | 0        | 2         | 0        | 2.0         | 0        | 4.0         | .164 | 2-3   |
| <b>Totals</b> |                      | <b>52</b> | <b>53</b> | <b>23</b> | <b>127</b> | <b>.236</b> | <b>5</b> | <b>18</b> | <b>.278</b> | <b>0</b> | <b>1</b> | <b>19</b> | <b>.947</b> | <b>1</b> | <b>6</b> | <b>.833</b> | <b>10</b> | <b>3</b> | <b>36</b> | <b>3</b> | <b>39.0</b> | <b>0</b> | <b>74.0</b> |      |       |

Player Averages

| Sets Played | Kills per set | Assists per set | Service aces per set | Digs per set | Blocks per set | Points per set |
|-------------|---------------|-----------------|----------------------|--------------|----------------|----------------|
| 52          | 1.02          | 0.10            | 0.00                 | 0.19         | 0.75           | 1.42           |

| SEASON       | TEAM | SM-MP          | K         | K/S         | E         | TA         | PCT         | A        | A/S         | SA       | SA/S        | SE       | DIG       | D/S         | RE       | BS       | BA        | TB        | B/S         | BE       | BHE      | PTS         | PTS/S       |
|--------------|------|----------------|-----------|-------------|-----------|------------|-------------|----------|-------------|----------|-------------|----------|-----------|-------------|----------|----------|-----------|-----------|-------------|----------|----------|-------------|-------------|
| 2023-24      | SJSU | 52-20          | 53        | 1.02        | 23        | 127        | .236        | 5        | 0.10        | 0        | 0.00        | 1        | 10        | 0.19        | 1        | 3        | 36        | 39        | 0.75        | 3        | 0        | 74.0        | 1.42        |
| <b>TOTAL</b> |      | <b>52 - 20</b> | <b>53</b> | <b>1.02</b> | <b>23</b> | <b>127</b> | <b>.236</b> | <b>5</b> | <b>0.10</b> | <b>0</b> | <b>0.00</b> | <b>1</b> | <b>10</b> | <b>0.19</b> | <b>1</b> | <b>3</b> | <b>36</b> | <b>39</b> | <b>0.75</b> | <b>3</b> | <b>0</b> | <b>74.0</b> | <b>1.42</b> |



**#12**  
**Alyssa Bjork**  
**MB • 6-2 • JR**  
**Huntington**  
**Beach, Calif./**  
**Huntington**  
**Beach HS**

**Bjork's Season Highs**

**Kills** 9 vs. CSUN, 8-25  
**Attempts** 15 vs. CSUN, 8-25  
**Assists** 1 Two opponents  
**Aces** -- --  
**Digs** 2 at San Diego State, 9-23  
**Block Solo** 1 Two opponents  
**Block Assists** 4 Two opponents  
**Total Blocks** 4 Two opponents

**Bjork's Career Highs**

**Kills** 9 vs. CSUN, 8-25-23  
**Attempts** 15 vs. CSUN, 8-25-23  
**Assists** 1 Two opponents  
**Aces** -- --  
**Digs** 2 at San Diego State, 9-23-23  
**Block Solo** 1 Three opponents  
**Block Assists** 4 Two opponents  
**Total Blocks** 4 Three opponents

- Played in 18 matches and 47 sets
- Nine kills in the first match of the season against CSUN
- Two digs at San Diego State
- Four block assists against CSUN and New Mexico
- Three blocks, one solo and two assists, against Santa Clara

| Date          | Opponent             | SP        | Attack    |           |            |             | Set      |          |             | Serve    |          |          |             | Recept   |           |             | Blocking |          |           |          | Team        |          |             |      |       |
|---------------|----------------------|-----------|-----------|-----------|------------|-------------|----------|----------|-------------|----------|----------|----------|-------------|----------|-----------|-------------|----------|----------|-----------|----------|-------------|----------|-------------|------|-------|
|               |                      |           | K         | E         | TA         | PCT         | A        | TA       | PCT         | SA       | SE       | TA       | PCT         | RE       | TA        | PCT         | DIG      | BS       | BA        | BE       | TOTAL       | BHE      | POINTS      | HIT% | SCORE |
| 08/25/2023    | CSUN                 | *5        | 9         | 0         | 15         | .600        | 0        | 0        | .000        | 0        | 0        | 0        | .000        | 0        | 1         | 1.000       | 0        | 0        | 4         | 0        | 4.0         | 0        | 11.0        | .203 | 3-2   |
| 08/26/2023    | Jacksonville         | *3        | 5         | 0         | 12         | .417        | 0        | 0        | .000        | 0        | 0        | 0        | .000        | 0        | 0         | .000        | 0        | 0        | 1         | 1        | 1.0         | 0        | 5.5         | .296 | 3-0   |
| 08/27/2023    | Santa Clara          | *2        | 0         | 1         | 2          | -.500       | 0        | 0        | .000        | 0        | 0        | 0        | .000        | 0        | 0         | .000        | 1        | 1        | 2         | 0        | 3.0         | 0        | 2.0         | .035 | 0-3   |
| 09/01/2023    | vs Portland          | *2        | 4         | 3         | 8          | .125        | 0        | 0        | .000        | 0        | 0        | 0        | .000        | 0        | 0         | .000        | 1        | 0        | 2         | 0        | 2.0         | 0        | 5.0         | .181 | 3-1   |
| 09/01/2023    | at Sacramento St.    | *3        | 3         | 3         | 9          | .000        | 1        | 2        | .500        | 0        | 0        | 0        | .000        | 0        | 0         | .000        | 0        | 0        | 1         | 1        | 1.0         | 0        | 3.5         | .167 | 1-3   |
| 09/02/2023    | vs Cal St. Fullerton | *3        | 6         | 3         | 14         | .214        | 0        | 1        | .000        | 0        | 0        | 0        | .000        | 0        | 0         | .000        | 0        | 0        | 2         | 0        | 2.0         | 0        | 7.0         | .213 | 3-0   |
| 09/08/2023    | at Campbell          | 2         | 1         | 1         | 6          | .000        | 0        | 0        | .000        | 0        | 0        | 0        | .000        | 0        | 0         | .000        | 0        | 0        | 1         | 0        | 1.0         | 0        | 1.5         | .233 | 3-1   |
| 09/09/2023    | vs UTSA              | 3         | 0         | 2         | 7          | -.286       | 0        | 2        | .000        | 0        | 0        | 0        | .000        | 1        | 4         | .750        | 0        | 0        | 2         | 0        | 2.0         | 0        | 1.0         | .151 | 3-1   |
| 09/12/2023    | at Saint Mary's (CA) | 4         | 5         | 3         | 11         | .182        | 0        | 0        | .000        | 0        | 0        | 0        | .000        | 0        | 3         | 1.000       | 1        | 0        | 1         | 0        | 1.0         | 0        | 5.5         | .221 | 3-1   |
| 09/14/2023    | at San Francisco     | 2         | 3         | 1         | 5          | .400        | 0        | 0        | .000        | 0        | 0        | 0        | .000        | 0        | 0         | .000        | 0        | 0        | 0         | 0        | 0.0         | 0        | 3.0         | .147 | 1-3   |
| 09/15/2023    | vs CSUN              | *2        | 2         | 2         | 7          | .000        | 0        | 0        | .000        | 0        | 0        | 0        | .000        | 0        | 1         | 1.000       | 0        | 0        | 0         | 0        | 0.0         | 0        | 2.0         | .252 | 3-0   |
| 09/23/2023    | at San Diego St.     | 1         | 0         | 2         | 2          | -1.000      | 0        | 0        | .000        | 0        | 0        | 0        | .000        | 0        | 0         | .000        | 2        | 0        | 0         | 0        | 0.0         | 0        | 0.0         | .194 | 1-3   |
| 09/28/2023    | Nevada               | *2        | 1         | 1         | 3          | .000        | 0        | 0        | .000        | 0        | 0        | 0        | .000        | 0        | 0         | .000        | 0        | 0        | 1         | 0        | 1.0         | 0        | 1.5         | .241 | 3-1   |
| 10/12/2023    | Boise St.            | *3        | 2         | 3         | 12         | -.083       | 0        | 0        | .000        | 0        | 0        | 0        | .000        | 0        | 0         | .000        | 0        | 0        | 2         | 0        | 2.0         | 0        | 3.0         | .202 | 0-3   |
| 10/19/2023    | New Mexico           | *4        | 1         | 1         | 7          | .000        | 1        | 1        | 1.000       | 0        | 0        | 0        | .000        | 0        | 0         | .000        | 0        | 0        | 4         | 0        | 4.0         | 0        | 3.0         | .155 | 1-3   |
| 10/21/2023    | at Air Force         | *2        | 0         | 1         | 3          | -.333       | 0        | 1        | .000        | 0        | 0        | 0        | .000        | 0        | 1         | 1.000       | 0        | 0        | 0         | 0        | 0.0         | 0        | 0.0         | .169 | 0-3   |
| 10/26/2023    | at Fresno St.        | 1         | 1         | 0         | 2          | .500        | 0        | 1        | .000        | 0        | 0        | 0        | .000        | 0        | 0         | .000        | 0        | 0        | 0         | 0        | 0.0         | 0        | 1.0         | .102 | 3-2   |
| 10/28/2023    | at Nevada            | 3         | 5         | 1         | 11         | .364        | 0        | 0        | .000        | 0        | 0        | 0        | .000        | 0        | 0         | .000        | 0        | 1        | 2         | 0        | 3.0         | 0        | 7.0         | .164 | 2-3   |
| <b>Totals</b> |                      | <b>47</b> | <b>48</b> | <b>28</b> | <b>136</b> | <b>.147</b> | <b>2</b> | <b>8</b> | <b>.250</b> | <b>0</b> | <b>0</b> | <b>0</b> | <b>.000</b> | <b>1</b> | <b>10</b> | <b>.900</b> | <b>5</b> | <b>2</b> | <b>25</b> | <b>2</b> | <b>27.0</b> | <b>0</b> | <b>62.5</b> |      |       |

**Player Averages**

| Sets Played | Kills per set | Assists per set | Service aces per set | Digs per set | Blocks per set | Points per set |
|-------------|---------------|-----------------|----------------------|--------------|----------------|----------------|
| 47          | 1.02          | 0.04            | 0.00                 | 0.11         | 0.57           | 1.33           |

| SEASON       | TEAM | SM-MP          | K         | K/S         | E         | TA         | PCT         | A        | A/S         | SA       | SA/S        | SE       | DIG      | D/S         | RE       | BS       | BA        | TB        | B/S         | BE       | BHE      | PTS         | PTS/S       |
|--------------|------|----------------|-----------|-------------|-----------|------------|-------------|----------|-------------|----------|-------------|----------|----------|-------------|----------|----------|-----------|-----------|-------------|----------|----------|-------------|-------------|
| 2021-22      | SJSU | 8-3            | 0         | 0.00        | 1         | 5          | -.200       | 0        | 0.00        | 0        | 0.00        | 0        | 0        | 0.00        | 1        | 1        | 4         | 5         | 0.63        | 0        | 0        | 3.0         | 0.38        |
| 2022-23      | SJSU | 6-5            | 1         | 0.17        | 0         | 2          | .500        | 0        | 0.00        | 0        | 0.00        | 0        | 0        | 0.00        | 0        | 0        | 1         | 1         | 0.17        | 0        | 0        | 1.5         | 0.25        |
| 2023-24      | SJSU | 47-18          | 48        | 1.02        | 28        | 136        | .147        | 2        | 0.04        | 0        | 0.00        | 0        | 5        | 0.11        | 1        | 2        | 25        | 27        | 0.57        | 2        | 0        | 62.5        | 1.33        |
| <b>TOTAL</b> |      | <b>61 - 26</b> | <b>49</b> | <b>0.80</b> | <b>29</b> | <b>143</b> | <b>.140</b> | <b>2</b> | <b>0.03</b> | <b>0</b> | <b>0.00</b> | <b>0</b> | <b>5</b> | <b>0.08</b> | <b>2</b> | <b>3</b> | <b>30</b> | <b>33</b> | <b>0.54</b> | <b>2</b> | <b>0</b> | <b>67.0</b> | <b>1.10</b> |



**#13**  
**Elle Patterson**  
 L/OH • 6-0 • FR  
 Brownsburg, Ind./  
 Tri-West HS

| Patterson's Season Highs |    |                        |
|--------------------------|----|------------------------|
| Kills                    | 2  | at Fresno State, 10-26 |
| Attempts                 | 8  | vs. Santa Clara, 8-27  |
| Assists                  | 1  | Two opponents          |
| Aces                     | 3  | at Saint Mary's, 9-12  |
| Digs                     | 4  | Two opponents          |
| Block Solo               | -- | --                     |
| Block Assists            | 1  | vs. CS Fullerton, 9-2  |
| Total Blocks             | 1  | vs. CS Fullerton, 9-2  |

- Played in 18 matches and 38 sets
- Two kills at Fresno State and one kill against Santa Clara
- Three aces in a win at Saint Mary's and two aces against Utah State
- Four digs at Colorado State and at Fresno State
- Four digs at Fresno State and three digs against UTRGV, Fresno State, at Wyoming and versus Utah State
- Only block versus Cal State Fullerton

| Date          | Opponent             | SP        | Attack   |          |           |              | Set      |           |             | Serve    |           |            |             | Recept   |           |             | Blocking  |          |          |          | Team       |          |             |      |       |
|---------------|----------------------|-----------|----------|----------|-----------|--------------|----------|-----------|-------------|----------|-----------|------------|-------------|----------|-----------|-------------|-----------|----------|----------|----------|------------|----------|-------------|------|-------|
|               |                      |           | K        | E        | TA        | PCT          | A        | TA        | PCT         | SA       | SE        | TA         | PCT         | RE       | TA        | PCT         | DIG       | BS       | BA       | BE       | TOTAL      | BHE      | POINTS      | HIT% | SCORE |
| 08/26/2023    | Jacksonville         | 1         | 0        | 0        | 0         | .000         | 0        | 0         | .000        | 0        | 1         | 2          | .500        | 0        | 0         | .000        | 0         | 0        | 0        | 0        | 0.0        | 0        | 0.0         | .296 | 3-0   |
| 08/27/2023    | Santa Clara          | 2         | 1        | 1        | 8         | .000         | 0        | 0         | .000        | 0        | 1         | 4          | .750        | 1        | 6         | .833        | 2         | 0        | 0        | 0        | 0.0        | 0        | 1.0         | .035 | 0-3   |
| 09/01/2023    | at Sacramento St.    | 2         | 0        | 0        | 0         | .000         | 0        | 2         | .000        | 0        | 2         | 6          | .667        | 0        | 4         | 1.000       | 0         | 0        | 0        | 0        | 0.0        | 0        | 0.0         | .167 | 1-3   |
| 09/02/2023    | vs Cal St. Fullerton | 3         | 0        | 2        | 7         | -.286        | 1        | 2         | .500        | 1        | 0         | 5          | 1.000       | 1        | 11        | .909        | 2         | 0        | 1        | 0        | 1.0        | 0        | 1.5         | .213 | 3-0   |
| 09/08/2023    | at Campbell          | 1         | 0        | 0        | 0         | .000         | 0        | 0         | .000        | 0        | 0         | 1          | 1.000       | 0        | 0         | .000        | 0         | 0        | 0        | 0        | 0.0        | 0        | 0.0         | .233 | 3-1   |
| 09/12/2023    | at Saint Mary's (CA) | 3         | 0        | 0        | 0         | .000         | 1        | 2         | .500        | 3        | 2         | 14         | .857        | 0        | 0         | .000        | 1         | 0        | 0        | 0        | 0.0        | 0        | 3.0         | .221 | 3-1   |
| 09/14/2023    | at San Francisco     | 1         | 0        | 0        | 0         | .000         | 0        | 0         | .000        | 0        | 0         | 1          | 1.000       | 0        | 0         | .000        | 0         | 0        | 0        | 0        | 0.0        | 0        | 0.0         | .147 | 1-3   |
| 09/16/2023    | vs UTRGV             | 2         | 0        | 0        | 1         | .000         | 0        | 0         | .000        | 0        | 1         | 2          | .500        | 2        | 10        | .800        | 3         | 0        | 0        | 0        | 0.0        | 0        | 0.0         | .234 | 3-2   |
| 09/23/2023    | at San Diego St.     | 3         | 0        | 0        | 0         | .000         | 0        | 1         | .000        | 0        | 2         | 6          | .667        | 0        | 0         | .000        | 2         | 0        | 0        | 0        | 0.0        | 0        | 0.0         | .194 | 1-3   |
| 09/30/2023    | Fresno St.           | 2         | 0        | 0        | 0         | .000         | 0        | 0         | .000        | 0        | 0         | 16         | 1.000       | 0        | 4         | 1.000       | 3         | 0        | 0        | 0        | 0.0        | 0        | 0.0         | .146 | 3-1   |
| 10/05/2023    | at Wyoming           | 2         | 0        | 0        | 0         | .000         | 0        | 0         | .000        | 0        | 0         | 7          | 1.000       | 0        | 6         | 1.000       | 3         | 0        | 0        | 0        | 0.0        | 0        | 0.0         | .086 | 0-3   |
| 10/07/2023    | at Colorado St.      | *3        | 0        | 0        | 0         | .000         | 1        | 2         | .500        | 1        | 0         | 7          | 1.000       | 1        | 12        | .917        | 4         | 0        | 0        | 0        | 0.0        | 0        | 1.0         | .186 | 0-3   |
| 10/12/2023    | Boise St.            | 1         | 0        | 0        | 0         | .000         | 0        | 0         | .000        | 0        | 0         | 2          | 1.000       | 3        | 6         | .500        | 1         | 0        | 0        | 0        | 0.0        | 0        | 0.0         | .202 | 0-3   |
| 10/14/2023    | Utah St.             | 3         | 0        | 0        | 0         | .000         | 0        | 0         | .000        | 2        | 0         | 5          | 1.000       | 0        | 7         | 1.000       | 3         | 0        | 0        | 0        | 0.0        | 0        | 2.0         | .052 | 0-3   |
| 10/19/2023    | New Mexico           | 1         | 0        | 0        | 0         | .000         | 0        | 0         | .000        | 0        | 0         | 1          | 1.000       | 0        | 0         | .000        | 1         | 0        | 0        | 0        | 0.0        | 0        | 0.0         | .155 | 1-3   |
| 10/21/2023    | at Air Force         | 2         | 0        | 0        | 0         | .000         | 0        | 0         | .000        | 0        | 1         | 3          | .667        | 0        | 3         | 1.000       | 1         | 0        | 0        | 0        | 0.0        | 0        | 0.0         | .169 | 0-3   |
| 10/26/2023    | at Fresno St.        | 4         | 2        | 1        | 7         | .143         | 0        | 5         | .000        | 1        | 0         | 13         | 1.000       | 1        | 15        | .933        | 4         | 0        | 0        | 0        | 0.0        | 0        | 3.0         | .102 | 3-2   |
| 10/28/2023    | at Nevada            | *2        | 0        | 0        | 0         | .000         | 1        | 1         | 1.000       | 0        | 1         | 6          | .833        | 0        | 4         | 1.000       | 2         | 0        | 0        | 0        | 0.0        | 0        | 0.0         | .164 | 2-3   |
| <b>Totals</b> |                      | <b>38</b> | <b>3</b> | <b>4</b> | <b>23</b> | <b>-.043</b> | <b>4</b> | <b>15</b> | <b>.267</b> | <b>8</b> | <b>11</b> | <b>101</b> | <b>.891</b> | <b>9</b> | <b>88</b> | <b>.898</b> | <b>32</b> | <b>0</b> | <b>1</b> | <b>0</b> | <b>1.0</b> | <b>0</b> | <b>11.5</b> |      |       |

Player Averages

| Sets Played | Kills per set | Assists per set | Service aces per set | Digs per set | Blocks per set | Points per set |
|-------------|---------------|-----------------|----------------------|--------------|----------------|----------------|
| 38          | 0.08          | 0.11            | 0.21                 | 0.84         | 0.03           | 0.30           |

| SEASON       | TEAM | SM-MP          | K        | K/S         | E        | TA        | PCT          | A        | A/S         | SA       | SA/S        | SE        | DIG       | D/S         | RE       | BS       | BA       | TB       | B/S         | BE       | BHE      | PTS         | PTS/S       |
|--------------|------|----------------|----------|-------------|----------|-----------|--------------|----------|-------------|----------|-------------|-----------|-----------|-------------|----------|----------|----------|----------|-------------|----------|----------|-------------|-------------|
| 2023-24      | SJSU | 38-18          | 3        | 0.08        | 4        | 23        | -.043        | 4        | 0.11        | 8        | 0.21        | 11        | 32        | 0.84        | 9        | 0        | 1        | 1        | 0.03        | 0        | 0        | 11.5        | 0.30        |
| <b>TOTAL</b> |      | <b>38 - 18</b> | <b>3</b> | <b>0.08</b> | <b>4</b> | <b>23</b> | <b>-.043</b> | <b>4</b> | <b>0.11</b> | <b>8</b> | <b>0.21</b> | <b>11</b> | <b>32</b> | <b>0.84</b> | <b>9</b> | <b>0</b> | <b>1</b> | <b>1</b> | <b>0.03</b> | <b>0</b> | <b>0</b> | <b>11.5</b> | <b>0.30</b> |





**#14**  
**Jade**  
**Middleborn**  
**MB • 5-11 • FR**  
**San Diego, Calif./**  
**San Marcos HS**

| Middleborn's Season Highs |    |                        |
|---------------------------|----|------------------------|
| Kills                     | 1  | vs. Nevada, 9-28       |
| Attempts                  | 2  | vs. Nevada, 9-28       |
| Assists                   | -- | --                     |
| Aces                      | -- | --                     |
| Digs                      | -- | --                     |
| Block Solo                | -- | --                     |
| Block Assists             | 1  | at San Francisco, 9-14 |
| Total Blocks              | 1  | at San Francisco, 9-14 |

- Saw action in three matches this season
- Had an attack attempt and a block assist at San Francisco
- First collegiate kill in two attempts in a win over Fresno State

| Date          | Opponent         | SP       | Attack   |          |          |             | Set      |          |             | Serve    |          |          |             | Recept   |          |             | Blocking |          |          |          | Team       |          |            |      |       |
|---------------|------------------|----------|----------|----------|----------|-------------|----------|----------|-------------|----------|----------|----------|-------------|----------|----------|-------------|----------|----------|----------|----------|------------|----------|------------|------|-------|
|               |                  |          | K        | E        | TA       | PCT         | A        | TA       | PCT         | SA       | SE       | TA       | PCT         | RE       | TA       | PCT         | DIG      | BS       | BA       | BE       | TOTAL      | BHE      | POINTS     | HIT% | SCORE |
| 09/14/2023    | at San Francisco | 1        | 0        | 0        | 1        | .000        | 0        | 0        | .000        | 0        | 0        | 0        | .000        | 0        | 0        | .000        | 0        | 0        | 1        | 0        | 1.0        | 0        | 0.5        | .147 | 1-3   |
| 09/28/2023    | Nevada           | 1        | 1        | 0        | 2        | .500        | 0        | 0        | .000        | 0        | 0        | 0        | .000        | 0        | 0        | .000        | 0        | 0        | 0        | 0        | 0.0        | 0        | 1.0        | .241 | 3-1   |
| 10/14/2023    | Utah St.         | *2       | 0        | 0        | 1        | .000        | 0        | 0        | .000        | 0        | 0        | 0        | .000        | 0        | 0        | .000        | 0        | 0        | 0        | 0        | 0.0        | 0        | 0.0        | .052 | 0-3   |
| <b>Totals</b> |                  | <b>4</b> | <b>1</b> | <b>0</b> | <b>4</b> | <b>.250</b> | <b>0</b> | <b>0</b> | <b>.000</b> | <b>0</b> | <b>0</b> | <b>0</b> | <b>.000</b> | <b>0</b> | <b>0</b> | <b>.000</b> | <b>0</b> | <b>0</b> | <b>1</b> | <b>0</b> | <b>1.0</b> | <b>0</b> | <b>1.5</b> |      |       |

**Player Averages**

| Sets Played | Kills per set | Assists per set | Service aces per set | Digs per set | Blocks per set | Points per set |
|-------------|---------------|-----------------|----------------------|--------------|----------------|----------------|
| 4           | 0.25          | 0.00            | 0.00                 | 0.00         | 0.25           | 0.38           |

| SEASON       | TEAM | SM-MP        | K        | K/S         | E        | TA       | PCT         | A        | A/S         | SA       | SA/S        | SE       | DIG      | D/S         | RE       | BS       | BA       | TB       | B/S         | BE       | BHE      | PTS        | PTS/S       |
|--------------|------|--------------|----------|-------------|----------|----------|-------------|----------|-------------|----------|-------------|----------|----------|-------------|----------|----------|----------|----------|-------------|----------|----------|------------|-------------|
| 2023-24      | SJSU | 4-3          | 1        | 0.25        | 0        | 4        | .250        | 0        | 0.00        | 0        | 0.00        | 0        | 0        | 0.00        | 0        | 0        | 1        | 1        | 0.25        | 0        | 0        | 1.5        | 0.38        |
| <b>TOTAL</b> |      | <b>4 - 3</b> | <b>1</b> | <b>0.25</b> | <b>0</b> | <b>4</b> | <b>.250</b> | <b>0</b> | <b>0.00</b> | <b>0</b> | <b>0.00</b> | <b>0</b> | <b>0</b> | <b>0.00</b> | <b>0</b> | <b>0</b> | <b>1</b> | <b>1</b> | <b>0.25</b> | <b>0</b> | <b>0</b> | <b>1.5</b> | <b>0.38</b> |



# #16 Alessia Buffagni L • 5-6 • JR Castelnuovo Rangone, Italy

| Buffagni's Season Highs |    |                        |
|-------------------------|----|------------------------|
| Kills                   | -- | --                     |
| Attempts                | 3  | at San Francisco, 9-14 |
| Assists                 | 10 | vs. Fresno State, 9-30 |
| Aces                    | 2  | vs. UTSA, 9-9          |
| Digs                    | 27 | vs. New Mexico, 10-19  |
| Block Solo              | -- | --                     |
| Block Assists           | -- | --                     |
| Total Blocks            | -- | --                     |

| Buffagni's Career Highs |    |                           |
|-------------------------|----|---------------------------|
| Kills                   | 1  | at Nevada, 10-26-21       |
| Attempts                | 3  | at San Francisco, 9-14-23 |
| Assists                 | 10 | vs. Fresno State, 9-30-23 |
| Aces                    | 2  | vs. UTSA, 9-9-23          |
| Digs                    | 27 | vs. New Mexico, 10-19-23  |
| Block Solo              | -- | --                        |
| Block Assists           | -- | --                        |
| Total Blocks            | -- | --                        |

- Been the team's libero for much of the season
- Averaging 3.66 digs and 1.16 assists per set
- Double-digit digs in 18 matches
- 20+ digs in five matches
  - 27 vs. New Mexico
  - 25 at Campbell
  - 22 versus UTSA
  - 20 versus UTRGV and at San Diego State
- Mountain West Defensive Player of the Week - Oct. 2 as she averaged 4.25 digs and 1.63 assists per set
- First career double-double with 10 assists and 16 digs in a win over Fresno State

| Date          | Opponent             | Attack    |          |          | Set       |             |            | Serve      |             |          |           | Receipt    |             |           | Blocking   |             |            |          | Team     |          |            |          |            |      |     |
|---------------|----------------------|-----------|----------|----------|-----------|-------------|------------|------------|-------------|----------|-----------|------------|-------------|-----------|------------|-------------|------------|----------|----------|----------|------------|----------|------------|------|-----|
|               |                      | SP        | K        | E TA PCT | A         | TA          | PCT        | SA         | SE          | TA       | PCT       | RE         | TA          | PCT       | DIG        | BS          | BA         | BE       | TOTAL    | BHE      | POINTS     | HIT%     | SCORE      |      |     |
| 08/25/2023    | CSUN                 | 5         | 0        | 0        | 0         | .000        | 3          | 13         | .231        | 1        | 2         | 19         | .895        | 1         | 19         | .947        | 13         | 0        | 0        | 0        | 0.0        | 0        | 1.0        | .203 | 3-2 |
| 08/26/2023    | Jacksonville         | 3         | 0        | 0        | 0         | .000        | 5          | 8          | .625        | 0        | 0         | 11         | 1.000       | 0         | 9          | 1.000       | 11         | 0        | 0        | 0        | 0.0        | 0        | 0.0        | .296 | 3-0 |
| 08/27/2023    | Santa Clara          | 3         | 0        | 0        | 0         | .000        | 1          | 5          | .200        | 0        | 1         | 7          | .857        | 2         | 19         | .895        | 5          | 0        | 0        | 0        | 0.0        | 0        | 0.0        | .035 | 0-3 |
| 09/01/2023    | vs Portland          | 4         | 0        | 0        | 0         | .000        | 5          | 9          | .556        | 1        | 0         | 19         | 1.000       | 1         | 12         | .917        | 14         | 0        | 0        | 0        | 0.0        | 0        | 1.0        | .181 | 3-1 |
| 09/01/2023    | at Sacramento St.    | 4         | 0        | 0        | 0         | .000        | 5          | 18         | .278        | 1        | 2         | 16         | .875        | 1         | 23         | .957        | 15         | 0        | 0        | 0        | 0.0        | 0        | 1.0        | .167 | 1-3 |
| 09/02/2023    | vs Cal St. Fullerton | 3         | 0        | 0        | 0         | .000        | 2          | 12         | .167        | 0        | 1         | 14         | .929        | 0         | 15         | 1.000       | 15         | 0        | 0        | 0        | 0.0        | 0        | 0.0        | .213 | 3-0 |
| 09/08/2023    | at Campbell          | 4         | 0        | 0        | 0         | .000        | 6          | 21         | .286        | 0        | 0         | 14         | 1.000       | 1         | 28         | .964        | 25         | 0        | 0        | 0        | 0.0        | 0        | 0.0        | .233 | 3-1 |
| 09/08/2023    | vs Ga. Southern      | 3         | 0        | 0        | 0         | .000        | 5          | 17         | .294        | 0        | 1         | 9          | .889        | 1         | 25         | .960        | 14         | 0        | 0        | 0        | 0.0        | 0        | 0.0        | .101 | 0-3 |
| 09/09/2023    | vs UTSA              | 4         | 0        | 0        | 0         | .000        | 4          | 12         | .333        | 2        | 2         | 22         | .909        | 1         | 17         | .941        | 22         | 0        | 0        | 0        | 0.0        | 0        | 2.0        | .151 | 3-1 |
| 09/12/2023    | at Saint Mary's (CA) | 4         | 0        | 0        | 1         | .000        | 7          | 13         | .538        | 0        | 2         | 14         | .857        | 0         | 12         | 1.000       | 10         | 0        | 0        | 0        | 0.0        | 0        | 0.0        | .221 | 3-1 |
| 09/14/2023    | at San Francisco     | 4         | 0        | 0        | 3         | .000        | 7          | 18         | .389        | 0        | 1         | 15         | .933        | 0         | 17         | 1.000       | 12         | 0        | 0        | 0        | 0.0        | 0        | 0.0        | .147 | 1-3 |
| 09/15/2023    | vs CSUN              | 3         | 0        | 0        | 1         | .000        | 4          | 11         | .364        | 1        | 0         | 12         | 1.000       | 1         | 18         | .944        | 11         | 0        | 0        | 0        | 0.0        | 0        | 1.0        | .252 | 3-0 |
| 09/16/2023    | vs UTRGV             | 5         | 0        | 0        | 2         | .000        | 2          | 18         | .111        | 0        | 0         | 22         | 1.000       | 0         | 27         | 1.000       | 20         | 0        | 0        | 0        | 0.0        | 0        | 0.0        | .234 | 3-2 |
| 09/21/2023    | at UNLV              | 3         | 0        | 0        | 0         | .000        | 3          | 9          | .333        | 0        | 1         | 8          | .875        | 0         | 26         | 1.000       | 12         | 0        | 0        | 0        | 0.0        | 0        | 0.0        | .181 | 0-3 |
| 09/23/2023    | at San Diego St.     | 4         | 0        | 0        | 0         | .000        | 5          | 8          | .625        | 0        | 1         | 13         | .923        | 2         | 25         | .920        | 20         | 0        | 0        | 0        | 0.0        | 0        | 0.0        | .194 | 1-3 |
| 09/28/2023    | Nevada               | 4         | 0        | 0        | 0         | .000        | 3          | 14         | .214        | 0        | 1         | 14         | .929        | 1         | 8          | .875        | 18         | 0        | 0        | 0        | 0.0        | 0        | 0.0        | .241 | 3-1 |
| 09/30/2023    | Fresno St.           | 4         | 0        | 0        | 0         | .000        | 10         | 20         | .500        | 0        | 2         | 15         | .867        | 3         | 26         | .885        | 16         | 0        | 0        | 0        | 0.0        | 0        | 0.0        | .146 | 3-1 |
| 10/05/2023    | at Wyoming           | 3         | 0        | 0        | 1         | .000        | 5          | 16         | .313        | 0        | 2         | 11         | .818        | 0         | 21         | 1.000       | 8          | 0        | 0        | 0        | 0.0        | 0        | 0.0        | .086 | 0-3 |
| 10/07/2023    | at Colorado St.      | 3         | 0        | 0        | 1         | .000        | 3          | 14         | .214        | 0        | 0         | 9          | 1.000       | 1         | 19         | .947        | 8          | 0        | 0        | 0        | 0.0        | 0        | 0.0        | .186 | 0-3 |
| 10/12/2023    | Boise St.            | 3         | 0        | 0        | 0         | .000        | 4          | 12         | .333        | 1        | 2         | 13         | .846        | 3         | 20         | .850        | 13         | 0        | 0        | 0        | 0.0        | 0        | 1.0        | .202 | 0-3 |
| 10/14/2023    | Utah St.             | 3         | 0        | 0        | 0         | .000        | 5          | 11         | .455        | 1        | 1         | 14         | .929        | 5         | 40         | .875        | 5          | 0        | 0        | 0        | 0.0        | 0        | 1.0        | .052 | 0-3 |
| 10/19/2023    | New Mexico           | 4         | 0        | 0        | 1         | .000        | 5          | 15         | .333        | 0        | 1         | 13         | .923        | 1         | 30         | .967        | 27         | 0        | 0        | 0        | 0.0        | 0        | 0.0        | .155 | 1-3 |
| 10/21/2023    | at Air Force         | 2         | 0        | 0        | 0         | .000        | 3          | 7          | .429        | 0        | 1         | 4          | .750        | 1         | 13         | .923        | 6          | 0        | 0        | 0        | 0.0        | 0        | 0.0        | .169 | 0-3 |
| 10/26/2023    | at Fresno St.        | 1         | 0        | 0        | 0         | .000        | 0          | 0          | .000        | 0        | 0         | 3          | 1.000       | 0         | 2          | 1.000       | 1          | 0        | 0        | 0        | 0.0        | 0        | 0.0        | .102 | 3-2 |
| 10/28/2023    | at Nevada            | 5         | 0        | 0        | 0         | .000        | 0          | 1          | .000        | 0        | 0         | 11         | 1.000       | 0         | 11         | 1.000       | 1          | 0        | 0        | 0        | 0.0        | 0        | 0.0        | .164 | 2-3 |
| <b>Totals</b> |                      | <b>88</b> | <b>0</b> | <b>0</b> | <b>10</b> | <b>.000</b> | <b>102</b> | <b>302</b> | <b>.338</b> | <b>8</b> | <b>24</b> | <b>322</b> | <b>.925</b> | <b>26</b> | <b>482</b> | <b>.946</b> | <b>322</b> | <b>0</b> | <b>0</b> | <b>0</b> | <b>0.0</b> | <b>0</b> | <b>8.0</b> |      |     |

Player Averages

| Sets Played | Kills per set | Assists per set | Service aces per set | Digs per set | Blocks per set | Points per set |
|-------------|---------------|-----------------|----------------------|--------------|----------------|----------------|
| 88          | 0.00          | 1.16            | 0.09                 | 3.66         | 0.00           | 0.09           |

| SEASON       | TEAM | SM-MP           | K        | K/S         | E        | TA        | PCT         | A          | A/S         | SA       | SA/S        | SE        | DIG        | D/S         | RE        | BS       | BA       | TB       | B/S         | BE       | BHE      | PTS         | PTS/S       |
|--------------|------|-----------------|----------|-------------|----------|-----------|-------------|------------|-------------|----------|-------------|-----------|------------|-------------|-----------|----------|----------|----------|-------------|----------|----------|-------------|-------------|
| 2021-22      | SJSU | 86-26           | 1        | 0.01        | 0        | 4         | .250        | 12         | 0.14        | 1        | 0.01        | 0         | 125        | 1.45        | 15        | 0        | 0        | 0        | 0.00        | 0        | 0        | 2.0         | 0.02        |
| 2022-23      | SJSU | 8-7             | 0        | 0.00        | 0        | 0         | .000        | 1          | 0.13        | 0        | 0.00        | 1         | 4          | 0.50        | 1         | 0        | 0        | 0        | 0.00        | 0        | 0        | 0.0         | 0.00        |
| 2023-24      | SJSU | 88-25           | 0        | 0.00        | 0        | 10        | .000        | 102        | 1.16        | 8        | 0.09        | 24        | 322        | 3.66        | 26        | 0        | 0        | 0        | 0.00        | 0        | 0        | 8.0         | 0.09        |
| <b>TOTAL</b> |      | <b>182 - 58</b> | <b>1</b> | <b>0.01</b> | <b>0</b> | <b>14</b> | <b>.071</b> | <b>115</b> | <b>0.63</b> | <b>9</b> | <b>0.05</b> | <b>25</b> | <b>451</b> | <b>2.48</b> | <b>42</b> | <b>0</b> | <b>0</b> | <b>0</b> | <b>0.00</b> | <b>0</b> | <b>0</b> | <b>10.0</b> | <b>0.05</b> |



**#20**  
**Sude Budak**  
**OH • 6-1 • FR**  
**Istanbul, Turkey/  
 Mustafa Kemal  
 Anatolian HS**

| Budak's Season Highs |                    |
|----------------------|--------------------|
| Kills                | 1 vs. Nevada, 9-28 |
| Attempts             | 3 Two opponents    |
| Assists              | -- --              |
| Aces                 | -- --              |
| Digs                 | 1 Two opponents    |
| Block Solo           | -- --              |
| Block Assists        | -- --              |
| Total Blocks         | -- --              |

- Played in five matches and five sets
- Recorded her first kill in the win over Nevada
- One dig versus Santa Clara and at San Francisco

| Date          | Opponent         | SP       | Attack   |          |           |              | Set      |          |             | Serve    |          |          |             | Receipt  |           |             | Blocking |          |          |          | Team       |          |            |      |       |
|---------------|------------------|----------|----------|----------|-----------|--------------|----------|----------|-------------|----------|----------|----------|-------------|----------|-----------|-------------|----------|----------|----------|----------|------------|----------|------------|------|-------|
|               |                  |          | K        | E        | TA        | PCT          | A        | TA       | PCT         | SA       | SE       | TA       | PCT         | RE       | TA        | PCT         | DIG      | BS       | BA       | BE       | TOTAL      | BHE      | POINTS     | HIT% | SCORE |
| 08/25/2023    | CSUN             | 1        | 0        | 1        | 3         | -.333        | 0        | 0        | .000        | 0        | 0        | 0        | .000        | 0        | 2         | 1.000       | 0        | 0        | 0        | 0        | 0.0        | 0        | 0.0        | .203 | 3-2   |
| 08/27/2023    | Santa Clara      | 1        | 0        | 2        | 2         | -1.000       | 0        | 0        | .000        | 0        | 0        | 1        | 1.000       | 0        | 1         | 1.000       | 1        | 0        | 0        | 0        | 0.0        | 0        | 0.0        | .035 | 0-3   |
| 09/14/2023    | at San Francisco | 1        | 0        | 0        | 2         | .000         | 0        | 0        | .000        | 0        | 1        | 2        | .500        | 0        | 0         | .000        | 1        | 0        | 0        | 0        | 0.0        | 0        | 0.0        | .147 | 1-3   |
| 09/16/2023    | vs UTRGV         | 1        | 0        | 0        | 0         | .000         | 0        | 0        | .000        | 0        | 0        | 0        | .000        | 1        | 4         | .750        | 0        | 0        | 0        | 0        | 0.0        | 0        | 0.0        | .234 | 3-2   |
| 09/28/2023    | Nevada           | 1        | 1        | 1        | 3         | .000         | 0        | 0        | .000        | 0        | 0        | 0        | .000        | 2        | 5         | .600        | 0        | 0        | 0        | 0        | 0.0        | 0        | 1.0        | .241 | 3-1   |
| <b>Totals</b> |                  | <b>5</b> | <b>1</b> | <b>4</b> | <b>10</b> | <b>-.300</b> | <b>0</b> | <b>0</b> | <b>.000</b> | <b>0</b> | <b>1</b> | <b>3</b> | <b>.667</b> | <b>3</b> | <b>12</b> | <b>.750</b> | <b>2</b> | <b>0</b> | <b>0</b> | <b>0</b> | <b>0.0</b> | <b>0</b> | <b>1.0</b> |      |       |

**Player Averages**

| Sets Played | Kills per set | Assists per set | Service aces per set | Digs per set | Blocks per set | Points per set |
|-------------|---------------|-----------------|----------------------|--------------|----------------|----------------|
| 5           | 0.20          | 0.00            | 0.00                 | 0.40         | 0.00           | 0.20           |

| SEASON       | TEAM | SM-MP        | K        | K/S         | E        | TA        | PCT          | A        | A/S         | SA       | SA/S        | SE       | DIG      | D/S         | RE       | BS       | BA       | TB       | B/S         | BE       | BHE      | PTS        | PTS/S       |
|--------------|------|--------------|----------|-------------|----------|-----------|--------------|----------|-------------|----------|-------------|----------|----------|-------------|----------|----------|----------|----------|-------------|----------|----------|------------|-------------|
| 2023-24      | SJSU | 5-5          | 1        | 0.20        | 4        | 10        | -.300        | 0        | 0.00        | 0        | 0.00        | 1        | 2        | 0.40        | 3        | 0        | 0        | 0        | 0.00        | 0        | 0        | 1.0        | 0.20        |
| <b>TOTAL</b> |      | <b>5 - 5</b> | <b>1</b> | <b>0.20</b> | <b>4</b> | <b>10</b> | <b>-.300</b> | <b>0</b> | <b>0.00</b> | <b>0</b> | <b>0.00</b> | <b>1</b> | <b>2</b> | <b>0.40</b> | <b>3</b> | <b>0</b> | <b>0</b> | <b>0</b> | <b>0.00</b> | <b>0</b> | <b>0</b> | <b>1.0</b> | <b>0.20</b> |



**#21**  
**Teya Nguyen**  
**S • 5-9 • FR**  
**San Jose, Calif.**  
**Valley**  
**Christian HS**

| Nguyen's Season Highs |    |                          |
|-----------------------|----|--------------------------|
| Kills                 | 3  | at Sacramento State, 9-1 |
| Attempts              | 5  | vs. UTSA, 9-9            |
| Assists               | 27 | Two opponents            |
| Aces                  | 3  | vs. Portland, 9-1        |
| Digs                  | 12 | at Fresno State, 10-26   |
| Block Solo            | -- | --                       |
| Block Assists         | -- | --                       |
| Total Blocks          | -- | --                       |

- Played in 21 matches and 70 sets
- One of two setters that see action for the Spartans
- Averaging 3.93 assists and 1.76 digs per set
- 27 assists at Saint Mary's and versus UTRGV
- MW Freshman of the Week - Sept. 4
- Averaged 3.45 assists, 2.09 digs and 0.55 aces per set as the Spartans went 2-1 at Hornet Invitational
- First collegiate double-double with 13 assists and 11 digs in a win over Portland
- Three aces against Portland and two aces in six matches

| Date          | Opponent             | SP        | Attack    |          |           |             | Set        |            |             | Serve     |           |            |             | Recept   |          |              | Blocking   |          |          |          |            | Team     |             |      |       |
|---------------|----------------------|-----------|-----------|----------|-----------|-------------|------------|------------|-------------|-----------|-----------|------------|-------------|----------|----------|--------------|------------|----------|----------|----------|------------|----------|-------------|------|-------|
|               |                      |           | K         | E        | TA        | PCT         | A          | TA         | PCT         | SA        | SE        | TA         | PCT         | RE       | TA       | PCT          | DIG        | BS       | BA       | BE       | TOTAL      | BHE      | POINTS      | HIT% | SCORE |
| 08/25/2023    | CSUN                 | 5         | 0         | 0        | 0         | .000        | 5          | 12         | .417        | 1         | 2         | 22         | .909        | 0        | 3        | 1.000        | 7          | 0        | 0        | 0        | 0.0        | 0        | 1.0         | .203 | 3-2   |
| 08/26/2023    | Jacksonville         | *3        | 0         | 0        | 0         | .000        | 0          | 0          | .000        | 1         | 1         | 11         | .909        | 0        | 0        | .000         | 6          | 0        | 0        | 0        | 0.0        | 0        | 1.0         | .296 | 3-0   |
| 08/27/2023    | Santa Clara          | *2        | 0         | 0        | 0         | .000        | 1          | 2          | .500        | 0         | 0         | 6          | 1.000       | 0        | 1        | 1.000        | 5          | 0        | 0        | 0        | 0.0        | 0        | 0.0         | .035 | 0-3   |
| 09/01/2023    | vs Portland          | 4         | 0         | 0        | 0         | .000        | 13         | 28         | .464        | 3         | 1         | 21         | .952        | 0        | 0        | .000         | 11         | 0        | 0        | 0        | 0.0        | 0        | 3.0         | .181 | 3-1   |
| 09/01/2023    | at Sacramento St.    | 4         | 3         | 0        | 4         | .750        | 13         | 35         | .371        | 1         | 0         | 15         | 1.000       | 0        | 0        | .000         | 5          | 0        | 0        | 0        | 0.0        | 0        | 4.0         | .167 | 1-3   |
| 09/02/2023    | vs Cal St. Fullerton | 3         | 1         | 0        | 1         | 1.000       | 12         | 32         | .375        | 2         | 3         | 11         | .727        | 0        | 0        | .000         | 7          | 0        | 0        | 0        | 0.0        | 0        | 3.0         | .213 | 3-0   |
| 09/08/2023    | at Campbell          | 4         | 2         | 0        | 4         | .500        | 25         | 73         | .342        | 2         | 2         | 19         | .895        | 0        | 0        | .000         | 4          | 0        | 0        | 0        | 0.0        | 0        | 4.0         | .233 | 3-1   |
| 09/08/2023    | vs Ga. Southern      | *3        | 0         | 0        | 0         | .000        | 14         | 44         | .318        | 0         | 1         | 9          | .889        | 0        | 0        | .000         | 7          | 0        | 0        | 0        | 0.0        | 1        | 0.0         | .101 | 0-3   |
| 09/09/2023    | vs UTSA              | *4        | 2         | 0        | 5         | .400        | 23         | 67         | .343        | 0         | 1         | 11         | .909        | 0        | 0        | .000         | 7          | 0        | 0        | 0        | 0.0        | 2        | 2.0         | .151 | 3-1   |
| 09/12/2023    | at Saint Mary's (CA) | 4         | 1         | 1        | 4         | .000        | 27         | 59         | .458        | 2         | 1         | 18         | .944        | 0        | 0        | .000         | 5          | 0        | 0        | 0        | 0.0        | 0        | 3.0         | .221 | 3-1   |
| 09/14/2023    | at San Francisco     | 4         | 0         | 0        | 2         | .000        | 17         | 49         | .347        | 1         | 3         | 15         | .800        | 0        | 0        | .000         | 6          | 0        | 0        | 0        | 0.0        | 0        | 1.0         | .147 | 1-3   |
| 09/15/2023    | vs CSUN              | *3        | 0         | 0        | 0         | .000        | 19         | 49         | .388        | 2         | 1         | 16         | .938        | 0        | 0        | .000         | 5          | 0        | 0        | 0        | 0.0        | 0        | 2.0         | .252 | 3-0   |
| 09/16/2023    | vs UTRGV             | *5        | 1         | 0        | 1         | 1.000       | 27         | 52         | .519        | 0         | 0         | 11         | 1.000       | 0        | 0        | .000         | 8          | 0        | 0        | 0        | 0.0        | 0        | 1.0         | .234 | 3-2   |
| 09/21/2023    | at UNLV              | 3         | 0         | 0        | 1         | .000        | 10         | 29         | .345        | 0         | 0         | 8          | 1.000       | 0        | 0        | .000         | 4          | 0        | 0        | 0        | 0.0        | 0        | 0.0         | .181 | 0-3   |
| 09/23/2023    | at San Diego St.     | 1         | 0         | 0        | 0         | .000        | 5          | 18         | .278        | 1         | 1         | 3          | .667        | 0        | 0        | .000         | 2          | 0        | 0        | 0        | 0.0        | 0        | 1.0         | .194 | 1-3   |
| 09/28/2023    | Nevada               | 3         | 1         | 0        | 1         | 1.000       | 14         | 35         | .400        | 2         | 0         | 12         | 1.000       | 0        | 0        | .000         | 6          | 0        | 0        | 0        | 0.0        | 0        | 3.0         | .241 | 3-1   |
| 09/30/2023    | Fresno St.           | *2        | 0         | 0        | 1         | .000        | 5          | 20         | .250        | 0         | 1         | 4          | .750        | 0        | 0        | .000         | 3          | 0        | 0        | 0        | 0.0        | 0        | 0.0         | .146 | 3-1   |
| 10/07/2023    | at Colorado St.      | 3         | 1         | 0        | 2         | .500        | 10         | 29         | .345        | 0         | 0         | 1          | 1.000       | 0        | 0        | .000         | 4          | 0        | 0        | 0        | 0.0        | 0        | 1.0         | .186 | 0-3   |
| 10/19/2023    | New Mexico           | 4         | 0         | 0        | 2         | .000        | 21         | 68         | .309        | 0         | 3         | 16         | .813        | 0        | 0        | .000         | 7          | 0        | 0        | 0        | 0.0        | 0        | 0.0         | .155 | 1-3   |
| 10/21/2023    | at Air Force         | 2         | 0         | 0        | 0         | .000        | 3          | 12         | .250        | 0         | 1         | 5          | .800        | 0        | 0        | .000         | 2          | 0        | 0        | 0        | 0.0        | 1        | 0.0         | .169 | 0-3   |
| 10/26/2023    | at Fresno St.        | 4         | 0         | 1        | 4         | -.250       | 11         | 53         | .208        | 2         | 2         | 15         | .867        | 0        | 0        | .000         | 12         | 0        | 0        | 0        | 0.0        | 0        | 2.0         | .102 | 3-2   |
| <b>Totals</b> |                      | <b>70</b> | <b>12</b> | <b>2</b> | <b>32</b> | <b>.313</b> | <b>275</b> | <b>766</b> | <b>.359</b> | <b>20</b> | <b>24</b> | <b>249</b> | <b>.904</b> | <b>0</b> | <b>4</b> | <b>1.000</b> | <b>123</b> | <b>0</b> | <b>0</b> | <b>0</b> | <b>0.0</b> | <b>4</b> | <b>32.0</b> |      |       |

**Player Averages**

| Sets Played | Kills per set | Assists per set | Service aces per set | Digs per set | Blocks per set | Points per set |
|-------------|---------------|-----------------|----------------------|--------------|----------------|----------------|
| 70          | 0.17          | 3.93            | 0.29                 | 1.76         | 0.00           | 0.46           |

| SEASON       | TEAM | SM-MP          | K         | K/S         | E        | TA        | PCT         | A          | A/S         | SA        | SA/S        | SE        | DIG        | D/S         | RE       | BS       | BA       | TB       | B/S         | BE       | BHE      | PTS         | PTS/S       |
|--------------|------|----------------|-----------|-------------|----------|-----------|-------------|------------|-------------|-----------|-------------|-----------|------------|-------------|----------|----------|----------|----------|-------------|----------|----------|-------------|-------------|
| 2023-24      | SJSU | 70-21          | 12        | 0.17        | 2        | 32        | .313        | 275        | 3.93        | 20        | 0.29        | 24        | 123        | 1.76        | 0        | 0        | 0        | 0        | 0.00        | 0        | 4        | 32.0        | 0.46        |
| <b>TOTAL</b> |      | <b>70 - 21</b> | <b>12</b> | <b>0.17</b> | <b>2</b> | <b>32</b> | <b>.313</b> | <b>275</b> | <b>3.93</b> | <b>20</b> | <b>0.29</b> | <b>24</b> | <b>123</b> | <b>1.76</b> | <b>0</b> | <b>0</b> | <b>0</b> | <b>0</b> | <b>0.00</b> | <b>0</b> | <b>4</b> | <b>32.0</b> | <b>0.46</b> |



**#25**  
**Halen Kiefer**  
 DS/L • 5-9 • FR  
 Placentia, Calif./  
 El Dorado HS

| Kiefer's Season Highs |                         |
|-----------------------|-------------------------|
| Kills                 | -- --                   |
| Attempts              | -- --                   |
| Assists               | -- --                   |
| Aces                  | -- --                   |
| Digs                  | 1 vs. CS Fullerton, 9-2 |
| Block Solo            | -- --                   |
| Block Assists         | -- --                   |
| Total Blocks          | -- --                   |

- Saw action in two matches
- Only dig of the season against Cal State Fullerton

| Date          | Opponent             | SP       | Attack   |          |          |             | Set      |          |             | Serve    |          |          |             | Receipt  |          |             | Blocking |          |          |          | Team       |          |            |      |       |
|---------------|----------------------|----------|----------|----------|----------|-------------|----------|----------|-------------|----------|----------|----------|-------------|----------|----------|-------------|----------|----------|----------|----------|------------|----------|------------|------|-------|
|               |                      |          | K        | E        | TA       | PCT         | A        | TA       | PCT         | SA       | SE       | TA       | PCT         | RE       | TA       | PCT         | DIG      | BS       | BA       | BE       | TOTAL      | BHE      | POINTS     | HIT% | SCORE |
| 09/02/2023    | vs Cal St. Fullerton | 1        | 0        | 0        | 0        | .000        | 0        | 0        | .000        | 0        | 1        | 3        | .667        | 0        | 0        | .000        | 1        | 0        | 0        | 0        | 0.0        | 0        | 0.0        | .213 | 3-0   |
| 09/23/2023    | at San Diego St.     | 1        | 0        | 0        | 0        | .000        | 0        | 0        | .000        | 0        | 0        | 1        | 1.000       | 0        | 0        | .000        | 0        | 0        | 0        | 0        | 0.0        | 0        | 0.0        | .194 | 1-3   |
| <b>Totals</b> |                      | <b>2</b> | <b>0</b> | <b>0</b> | <b>0</b> | <b>.000</b> | <b>0</b> | <b>0</b> | <b>.000</b> | <b>0</b> | <b>1</b> | <b>4</b> | <b>.750</b> | <b>0</b> | <b>0</b> | <b>.000</b> | <b>1</b> | <b>0</b> | <b>0</b> | <b>0</b> | <b>0.0</b> | <b>0</b> | <b>0.0</b> |      |       |

**Player Averages**

| Sets Played | Kills per set | Assists per set | Service aces per set | Digs per set | Blocks per set | Points per set |
|-------------|---------------|-----------------|----------------------|--------------|----------------|----------------|
| 2           | 0.00          | 0.00            | 0.00                 | 0.50         | 0.00           | 0.00           |

| SEASON       | TEAM | SM-MP        | K        | K/S         | E        | TA       | PCT         | A        | A/S         | SA       | SA/S        | SE       | DIG      | D/S         | RE       | BS       | BA       | TB       | B/S         | BE       | BHE      | PTS        | PTS/S       |
|--------------|------|--------------|----------|-------------|----------|----------|-------------|----------|-------------|----------|-------------|----------|----------|-------------|----------|----------|----------|----------|-------------|----------|----------|------------|-------------|
| 2023-24      | SJSU | 2-2          | 0        | 0.00        | 0        | 0        | .000        | 0        | 0.00        | 0        | 0.00        | 1        | 1        | 0.50        | 0        | 0        | 0        | 0        | 0.00        | 0        | 0        | 0.0        | 0.00        |
| <b>TOTAL</b> |      | <b>2 - 2</b> | <b>0</b> | <b>0.00</b> | <b>0</b> | <b>0</b> | <b>.000</b> | <b>0</b> | <b>0.00</b> | <b>0</b> | <b>0.00</b> | <b>1</b> | <b>1</b> | <b>0.50</b> | <b>0</b> | <b>0</b> | <b>0</b> | <b>0</b> | <b>0.00</b> | <b>0</b> | <b>0</b> | <b>0.0</b> | <b>0.00</b> |



**#33**  
**Yazmin**  
**Pitpit**  
**MB • 6-2 • SR**  
**San Diego, Calif.**  
**Scripps Ranch HS**

- Played in three matches and eight sets
- Saw her first action of the season against Fresno State
- Had two kills in the match
- Two aces and four digs at Colorado State
- Led the team with three blocks, one solo and two assists, at Colorado State

| Pitpit's Season Highs |                             |
|-----------------------|-----------------------------|
| <b>Kills</b>          | 2 vs. Fresno State, 9-30    |
| <b>Attempts</b>       | 9 Two opponents             |
| <b>Assists</b>        | -- --                       |
| <b>Aces</b>           | 2 at Colorado State, 10-7   |
| <b>Digs</b>           | 4 at Colorado State, 10-7   |
| <b>Block Solo</b>     | 1 at Colorado State, 10-7   |
| <b>Block Assists</b>  | 2 at Colorado State, 10-7   |
| <b>Total Blocks</b>   | 3 at Colorado State, 10-7   |
| Pitpit's Career Highs |                             |
| <b>Kills</b>          | 9 Four opponents            |
| <b>Attempts</b>       | 17 at Wyoming, 10-6-22      |
| <b>Assists</b>        | 2 Two opponents             |
| <b>Aces</b>           | 3 Two opponents             |
| <b>Digs</b>           | 7 at Saint Mary's, 9-3-21   |
| <b>Block Solo</b>     | 2 at Utah State, 11-10-22   |
| <b>Block Assists</b>  | 7 at San Diego St., 9-22-22 |
| <b>Total Blocks</b>   | 7 at San Diego St., 9-22-22 |

| Date          | Opponent        | SP       | Attack   |          |           |             | Set      |          |             | Serve    |          |           |             | Recept   |          |              | Blocking |          |          |          | Team       |          |            |      |       |
|---------------|-----------------|----------|----------|----------|-----------|-------------|----------|----------|-------------|----------|----------|-----------|-------------|----------|----------|--------------|----------|----------|----------|----------|------------|----------|------------|------|-------|
|               |                 |          | K        | E        | TA        | PCT         | A        | TA       | PCT         | SA       | SE       | TA        | PCT         | RE       | TA       | PCT          | DIG      | BS       | BA       | BE       | TOTAL      | BHE      | POINTS     | HIT% | SCORE |
| 09/30/2023    | Fresno St.      | 3        | 2        | 0        | 4         | .500        | 0        | 0        | .000        | 0        | 0        | 0         | .000        | 0        | 0        | .000         | 0        | 0        | 0        | 0        | 0.0        | 0        | 2.0        | .146 | 3-1   |
| 10/05/2023    | at Wyoming      | *2       | 1        | 3        | 9         | -.222       | 0        | 2        | .000        | 0        | 0        | 0         | .000        | 0        | 0        | .000         | 0        | 0        | 0        | 0        | 0.0        | 0        | 1.0        | .086 | 0-3   |
| 10/07/2023    | at Colorado St. | *3       | 1        | 1        | 9         | .000        | 0        | 1        | .000        | 2        | 3        | 10        | .700        | 0        | 1        | 1.000        | 4        | 1        | 2        | 0        | 3.0        | 0        | 5.0        | .186 | 0-3   |
| <b>Totals</b> |                 | <b>8</b> | <b>4</b> | <b>4</b> | <b>22</b> | <b>.000</b> | <b>0</b> | <b>3</b> | <b>.000</b> | <b>2</b> | <b>3</b> | <b>10</b> | <b>.700</b> | <b>0</b> | <b>1</b> | <b>1.000</b> | <b>4</b> | <b>1</b> | <b>2</b> | <b>0</b> | <b>3.0</b> | <b>0</b> | <b>8.0</b> |      |       |

**Player Averages**

| Sets Played | Kills per set | Assists per set | Service aces per set | Digs per set | Blocks per set | Points per set |
|-------------|---------------|-----------------|----------------------|--------------|----------------|----------------|
| 8           | 0.50          | 0.00            | 0.25                 | 0.50         | 0.38           | 1.00           |

| SEASON       | TEAM | SM-MP           | K          | K/S         | E         | TA         | PCT         | A         | A/S         | SA        | SA/S        | SE        | DIG       | D/S         | RE       | BS       | BA         | TB         | B/S         | BE       | BHE      | PTS          | PTS/S       |
|--------------|------|-----------------|------------|-------------|-----------|------------|-------------|-----------|-------------|-----------|-------------|-----------|-----------|-------------|----------|----------|------------|------------|-------------|----------|----------|--------------|-------------|
| 2019-20      | SJSU | 16-5            | 5          | 0.31        | 1         | 10         | .400        | 4         | 0.25        | 0         | 0.00        | 0         | 1         | 0.06        | 0        | 0        | 5          | 5          | 0.31        | 0        | 0        | 7.5          | 0.47        |
| 2020-21      | SJSU | 31-8            | 0          | 0.00        | 0         | 0          | .000        | 0         | 0.00        | 7         | 0.23        | 14        | 5         | 0.16        | 0        | 0        | 0          | 0          | 0.00        | 0        | 0        | 7.0          | 0.23        |
| 2021-22      | SJSU | 83-27           | 36         | 0.43        | 25        | 126        | .087        | 4         | 0.05        | 13        | 0.16        | 25        | 37        | 0.45        | 2        | 2        | 45         | 47         | 0.57        | 0        | 1        | 73.5         | 0.89        |
| 2022-23      | SJSU | 109-30          | 149        | 1.37        | 33        | 318        | .365        | 5         | 0.05        | 0         | 0.00        | 1         | 35        | 0.32        | 1        | 4        | 69         | 73         | 0.67        | 7        | 1        | 187.5        | 1.72        |
| 2023-24      | SJSU | 8-3             | 4          | 0.50        | 4         | 22         | .000        | 0         | 0.00        | 2         | 0.25        | 3         | 4         | 0.50        | 0        | 1        | 2          | 3          | 0.38        | 0        | 0        | 8.0          | 1.00        |
| <b>TOTAL</b> |      | <b>247 - 73</b> | <b>194</b> | <b>0.79</b> | <b>63</b> | <b>476</b> | <b>.275</b> | <b>13</b> | <b>0.05</b> | <b>22</b> | <b>0.09</b> | <b>43</b> | <b>82</b> | <b>0.33</b> | <b>3</b> | <b>7</b> | <b>121</b> | <b>128</b> | <b>0.52</b> | <b>7</b> | <b>2</b> | <b>283.5</b> | <b>1.15</b> |