



San Jose St. at Hawaii

12/03/23 SimpliFi Arena at Stan Sheriff Center, Honolulu
2023-24 Women's Basketball

Officials: Esther Hsu, Josh Batin, Starr Rivera

San Jose St. - 47

Record: 4-6

NO.	Name	F	Min	FG			3P			FT			Rebounds			Fouls		TP	AS	TO	ST	Blocks		+/-
				M-A	M-A	M-A	OR	DR	TOT	PF	FD	OR	DR	TOT	BS	BA								
23	Alani Fluker	F	11:51	0-0	0-0	1-2	1	0	1	0	1	1	1	1	1	1	1	1	0	0	0	0	-22	
24	Amhyia Moreland	F	15:33	5-9	1-1	2-3	3	0	3	3	2	13	1	2	1	1	2	1	1	0	0	0	-10	
0	Sydni Summers	G	23:25	3-7	3-5	0-0	0	1	1	1	0	9	2	0	0	0	0	0	0	0	0	0	-21	
2	Sophia Jones	G	14:49	0-1	0-0	0-0	1	3	4	0	2	0	1	3	0	0	0	0	0	0	0	0	-7	
30	Sabrina Ma	G	25:51	0-5	0-3	1-2	1	2	3	3	3	1	0	2	0	0	0	0	0	0	0	0	-16	
3	Nailea Nicholas		28:11	1-4	0-0	0-0	0	3	3	2	1	2	4	7	1	0	0	0	0	0	0	0	-20	
11	Marisa Davis-Jones		16:07	1-1	0-0	2-4	0	1	1	5	3	4	0	5	0	0	0	0	0	0	0	0	-13	
12	Jasmine Singleton		26:56	0-4	0-2	0-0	1	1	2	3	3	0	3	3	0	0	0	0	0	0	0	0	-13	
34	Semaj Smith		15:33	6-8	0-0	1-1	0	3	3	1	1	13	0	0	0	0	1	1	1	1	1	1	-4	
44	Finau Tonga		08:13	1-3	0-0	0-0	1	1	2	1	0	2	1	2	0	0	0	0	0	0	0	0	-3	
1	Aniyah Quow		01:06	0-0	0-0	0-0	0	0	0	0	0	0	0	0	0	0	0	0	0	0	0	0	-3	
21	Sofia Kelemen		12:25	1-6	0-4	0-0	1	0	1	0	0	2	0	0	0	1	0	0	1	0	1	2	2	
Team							1	4	5			0			1									
Totals					18-48	4-15	7-12	10	19	29	19	16	47	13	26	3	2	2	2	2	2	2	2	-26

Shooting By Period		
1 st FG%	2-12	16.7%
3PT%	0-2	0.0%
FT%	0-0	0%
2 nd FG%	5-8	62.5%
3PT%	2-4	50.0%
FT%	1-2	50%
3 rd FG%	4-13	30.8%
3PT%	1-6	16.7%
FT%	6-9	66.7%
4 th FG%	7-15	46.7%
3PT%	1-3	33.3%
FT%	0-1	0%
GM FG%	18-48	37.5%
3PT%	4-15	26.7%
FT%	7-12	58.3%

Technical Fouls::NONE

Dead Ball Rebounds: 3, 0

Hawaii - 73

Record: 3-5

NO.	Name	F	Min	FG			3P			FT			Rebounds			Fouls		TP	AS	TO	ST	Blocks		+/-	
				M-A	M-A	M-A	OR	DR	TOT	PF	FD	OR	DR	TOT	BS	BA									
12	Imani Perez	F	27:29	6-9	0-0	0-0	0	4	4	1	1	12	2	1	2	0	1	27	2	1	2	0	1	27	
14	Brooklyn Rewers	C	31:38	4-11	1-2	0-0	1	4	5	3	0	9	0	3	3	1	0	29	0	3	3	1	0	29	
3	Lily Wahinekapu	G	28:51	5-6	2-2	2-2	0	5	5	1	3	14	3	2	3	0	0	38	3	2	3	0	0	38	
23	MeiLani McBee	G	25:33	2-3	2-3	0-0	1	3	4	2	2	6	1	0	0	1	0	26	1	0	0	1	0	26	
45	Olivia Davies	G	14:18	0-0	0-0	4-5	0	0	0	2	2	4	3	0	1	0	0	15	3	0	1	0	0	15	
15	Daejah Phillips		27:49	3-8	2-6	9-10	0	0	0	2	5	17	3	3	4	0	0	18	3	3	4	0	0	18	
1	Kelsie Imai		16:45	1-2	0-1	7-8	0	3	3	2	5	9	1	4	0	0	0	-8	1	4	0	0	0	-8	
11	Vivienne Berrett		08:22	1-4	0-0	0-0	0	0	0	1	0	2	0	2	0	0	1	-3	0	2	0	0	1	-3	
22	Jade Peacock		11:32	0-1	0-1	0-0	1	0	1	1	0	0	0	0	0	0	0	-5	0	0	0	0	0	-5	
2	Ashley Thoms		06:20	0-0	0-0	0-0	0	0	0	1	1	0	0	0	0	0	0	-4	0	0	0	0	0	-4	
13	Hallie Birdsong		01:23	0-1	0-1	0-0	0	0	0	0	0	0	0	0	0	0	0	-3	0	0	0	0	0	-3	
Team							2	1	3			0			0										
Totals					22-45	7-16	22-25	5	20	25	16	19	73	13	15	13	2	2	26	13	15	13	2	2	26

Shooting By Period		
1 st FG%	7-12	58.3%
3PT%	3-6	50.0%
FT%	1-2	50%
2 nd FG%	6-12	50.0%
3PT%	3-4	75.0%
FT%	7-8	87.5%
3 rd FG%	3-8	37.5%
3PT%	0-2	0.0%
FT%	10-11	90.9%
4 th FG%	6-13	46.2%
3PT%	1-4	25.0%
FT%	4-4	100%
GM FG%	22-45	48.9%
3PT%	7-16	43.8%
FT%	22-25	88.0%

Technical Fouls::NONE

Dead Ball Rebounds: 2, 2

	SJSU	Hawaii
Biggest lead	0 (1 st 10:00)	29 (3 rd 6:12)
Best Scoring Run	9(4 th 8:55)	13(1 st 4:42)
Lead Changes	0	
Times Tied	0	
Time with Lead	00:00	38:59

	SJSU	Hawaii
Points from		
Turnovers	13	27
Paint	26	24
Second Chance	8	2
Fast Breaks	1	14
Bench	23	28

	Period by Period Scoring				
	1st	2nd	3rd	4th	TOT
SJSU	4	13	15	15	47
Hawaii	18	22	16	17	73



Period 1

Quarter Starters:

Hawaii	3 Wahinekapu L	12 Perez I	14 Rewers B	23 McBee M	45 Davies O
SJSU	0 Summers S	2 Jones S	23 Fluker A	24 Moreland A	30 Ma S

Game Time	Hawaii	Score	Diff	SJSU
10:00	12 PEREZ I jumpball lost			24 MORELAND A jumpball won
09:30				turnover shot clock (1)
08:59	12 PEREZ I 2pt FG from turnover outside the paint, jump shot made (2)	2-0	2	
08:59	45 DAVIES O assist (1)			
08:35				0 SUMMERS S 2pt FG in the paint, layup missed
08:34	defensive dead ball rebound (1)			
08:34	12 PEREZ I foul drawn (1)			24 MORELAND A foul personal (1 - 1)
08:14	3 WAHINEKAPU L 3pt FG , jump shot made (3)	5-0	5	
08:14	45 DAVIES O assist (2)			
08:03				0 SUMMERS S substitution out
08:03				2 JONES S substitution out
08:03				23 FLUKER A substitution out
08:03				3 NICHOLAS N substitution in
08:03				11 DAVIS-JONES M substitution in
08:03				12 SINGLETON J substitution in
07:36				12 SINGLETON J 2pt FG outside the paint, jump shot missed
07:32	23 MCBEE M defensive rebound (1)			
07:24	23 MCBEE M 3pt FG , jump shot made (3)	8-0	8	
07:24	3 WAHINEKAPU L assist (1)			
07:13	23 MCBEE M foul personal (1 - 1)			11 DAVIS-JONES M foul drawn (1)
07:13				24 MORELAND A substitution out
07:13				30 MA S substitution out
07:13				0 SUMMERS S substitution in
07:13				34 SMITH S substitution in
06:58				34 SMITH S 2pt FG outside the paint, jump shot blocked
06:58	14 REWERS B block (1)			
06:54	3 WAHINEKAPU L defensive rebound (1)			
06:48	45 DAVIES O substitution out			
06:48	15 PHILLIPS D substitution in			
06:31	14 REWERS B 2pt FG outside the paint, hook shot made (2)	10-0	10	
06:17	15 PHILLIPS D steal (1)			11 DAVIS-JONES M turnover bad pass (1)
06:13	15 PHILLIPS D 2pt FG fast break from turnover in the paint, layup made (2)	12-0	12	
05:47				3 NICHOLAS N 2pt FG in the paint, layup missed
05:44	12 PEREZ I defensive rebound (1)			
05:36	15 PHILLIPS D 3pt FG , jump shot missed			
05:33				34 SMITH S defensive rebound (1)
05:10				3 NICHOLAS N turnover bad pass (1)
04:58	12 PEREZ I 2pt FG from turnover in the paint, layup missed			
04:55				defensive rebound (2)
04:55	Timeout media			
04:55	3 WAHINEKAPU L substitution out			
04:55	14 REWERS B substitution out			



San Jose St. at Hawaii

12/03/23 SimpliFi Arena at Stan Sheriff Center, Honolulu
2023-24 Women's Basketball

Officials: Esther Hsu, Josh Batin, Starr Rivera

Game Time	Hawaii	Score	Diff	SJSU
04:55	23 MCBEE M substitution out			
04:55	1 IMAI K substitution in			
04:55	11 BERRETT V substitution in			
04:55	22 PEACOCK J substitution in			
04:55				3 NICHOLAS N substitution out
04:55				30 MA S substitution in
04:45	15 PHILLIPS D steal (2)			12 SINGLETON J turnover bad pass (1)
04:42	15 PHILLIPS D foul drawn (1)			11 DAVIS-JONES M foul shooting (1 - 2)
04:42	15 PHILLIPS D free throw fast break 1 - 2 missed			
04:42	offensive dead ball rebound (2)			
04:42	15 PHILLIPS D free throw fast break 2 - 2 made (3)	13-0	13	
04:36	12 PEREZ I foul personal (1 - 2)			12 SINGLETON J foul drawn (1)
04:36				34 SMITH S substitution out
04:36				44 TONGA F substitution in
04:23				0 SUMMERS S 3pt FG , jump shot missed
04:20				12 SINGLETON J offensive rebound (1)
04:12				44 TONGA F 2pt FG second chance in the paint, layup missed
04:07				44 TONGA F offensive rebound (1)
04:06				12 SINGLETON J 3pt FG second chance, jump shot missed
04:01	1 IMAI K defensive rebound (1)			
03:55	15 PHILLIPS D 3pt FG , jump shot missed			
03:50				30 MA S defensive rebound (1)
03:40		13-2	11	44 TONGA F 2pt FG in the paint, layup made (2)
03:21	1 IMAI K substitution out			
03:21	11 BERRETT V substitution out			
03:21	15 PHILLIPS D substitution out			
03:21	3 WAHINEKAPU L substitution in			
03:21	14 REWERS B substitution in			
03:21	45 DAVIES O substitution in			
03:21				30 MA S substitution out
03:21				44 TONGA F substitution out
03:21				3 NICHOLAS N substitution in
03:21				24 MORELAND A substitution in
03:16	3 WAHINEKAPU L 3pt FG , jump shot made (6)	16-2	14	
03:05				11 DAVIS-JONES M turnover bad pass (2)
02:42	14 REWERS B turnover lost ball (1)			24 MORELAND A steal (1)
02:27				3 NICHOLAS N 2pt FG from turnover in the paint, jump shot missed
02:24	14 REWERS B defensive rebound (1)			
02:19	3 WAHINEKAPU L turnover travel (1)			
02:19				12 SINGLETON J substitution out
02:19				2 JONES S substitution in
02:19	12 PEREZ I substitution out			
02:19	23 MCBEE M substitution in			
02:19				0 SUMMERS S substitution out
02:19				30 MA S substitution in
02:01				24 MORELAND A 2pt FG from turnover in the paint, jump shot missed
01:58	23 MCBEE M defensive rebound (2)			
01:52	23 MCBEE M 3pt FG , jump shot missed			



San Jose St. at Hawaii

12/03/23 SimpliFi Arena at Stan Sheriff Center, Honolulu
2023-24 Women's Basketball

Officials: Esther Hsu, Josh Batin, Starr Rivera

Game Time	Hawaii	Score	Diff	SJSU
01:48				2 JONES S defensive rebound (1)
01:38				2 JONES S 2pt FG in the paint, layup missed
01:36	14 REWERS B defensive rebound (2)			
01:29	23 MCBEE M foul drawn (1)			24 MORELAND A foul personal (2 - 3)
01:29	45 DAVIES O substitution out			
01:29	15 PHILLIPS D substitution in			
01:29				24 MORELAND A substitution out
01:29				30 MA S substitution out
01:29				12 SINGLETON J substitution in
01:29				34 SMITH S substitution in
01:25	3 WAHINEKAPU L 2pt FG in the paint, jump shot made (8)	18-2	16	
01:25	15 PHILLIPS D assist (1)			
01:05	3 WAHINEKAPU L steal (1)			11 DAVIS-JONES M turnover lost ball (3)
01:00	3 WAHINEKAPU L 2pt FG from turnover in the paint, layup missed			
00:58				defensive rebound (7)
00:58				2 JONES S substitution out
00:58				0 SUMMERS S substitution in
00:47		18-4	14	11 DAVIS-JONES M 2pt FG in the paint, jump shot made (2)
00:25	3 WAHINEKAPU L substitution out			
00:25	22 PEACOCK J substitution out			
00:25	1 IMAI K substitution in			
00:25	2 THOMS A substitution in			
00:01	15 PHILLIPS D turnover bad pass (1)			
END OF PERIOD				
Hawaii 18-4 SJSU				



San Jose St. at Hawaii

12/03/23 SimpliFi Arena at Stan Sheriff Center, Honolulu
2023-24 Women's Basketball

Officials: Esther Hsu, Josh Batin, Starr Rivera

San Jose St. - 4

NO.	Name	F	Min	FG			Rebounds			Fouls		TP	AS	TO	ST	Blocks		+/-
				M-A	3P	FT	OR	DR	TOT	PF	FD					BS	BA	
23	Alani Fluker	F	01:57	0-0	0-0	0-0	0	0	0	0	0	0	0	0	0	0	0	-5
24	Amhyia Moreland	F	04:39	0-1	0-0	0-0	0	0	0	2	0	0	0	1	0	0	-11	
0	Sydni Summers	G	07:50	0-2	0-1	0-0	0	0	0	0	0	0	0	0	0	0	-9	
2	Sophia Jones	G	03:17	0-1	0-0	0-0	0	1	1	0	0	0	0	0	0	0	-7	
30	Sabrina Ma	G	05:11	0-0	0-0	0-0	0	1	1	0	0	0	0	0	0	0	-7	
3	Nailea Nicholas		06:29	0-2	0-0	0-0	0	0	0	0	0	0	1	0	0	0	-10	
11	Marisa Davis-Jones		08:03	1-1	0-0	0-0	0	0	0	1	1	2	0	3	0	0	-9	
12	Jasmine Singleton		07:13	0-2	0-1	0-0	1	0	1	0	1	0	0	1	0	0	-9	
34	Semaj Smith		04:06	0-1	0-0	0-0	0	1	1	0	0	0	0	0	0	1	-5	
44	Finau Tonga		01:15	1-2	0-0	0-0	1	0	1	0	0	2	0	0	0	0	2	
Team							0	2	2		0		1					
Totals				2-12	0-2	0-0	2	5	7	3	2	4	0	6	1	0	1	-14

Shooting By Period		
1st FG%	2-12	16.7%
3PT%	0-2	0.0%
FT%	0-0	0%
GM FG%	2-12	16.7%
3PT%	0-2	0.0%
FT%	0-0	0.0%

Dead Ball Rebounds: 0, 0

Technical Fouls::NONE

Hawaii - 18

NO.	Name	F	Min	FG			Rebounds			Fouls		TP	AS	TO	ST	Blocks		+/-
				M-A	3P	FT	OR	DR	TOT	PF	FD					BS	BA	
12	Imani Perez	F	07:41	1-2	0-0	0-0	0	1	1	1	1	2	0	0	0	0	0	14
14	Brooklyn Rewers	C	08:26	1-1	0-0	0-0	0	2	2	0	0	2	0	1	0	1	0	15
3	Lily Wahinekapu	G	08:01	3-4	2-2	0-0	0	1	1	0	0	8	1	1	1	0	0	15
23	MeiLani McBee	G	07:24	1-2	1-2	0-0	0	2	2	1	1	3	0	0	0	0	0	12
45	Olivia Davies	G	05:04	0-0	0-0	0-0	0	0	0	0	0	0	2	0	0	0	0	11
15	Daejah Phillips		04:56	1-3	0-2	1-2	0	0	0	0	1	3	1	1	2	0	0	3
1	Kelsie Imai		01:59	0-0	0-0	0-0	0	1	1	0	0	0	0	0	0	0	0	-1
11	Vivienne Berrett		01:34	0-0	0-0	0-0	0	0	0	0	0	0	0	0	0	0	0	-1
22	Jade Peacock		04:30	0-0	0-0	0-0	0	0	0	0	0	0	0	0	0	0	0	2
2	Ashley Thoms		00:25	0-0	0-0	0-0	0	0	0	0	0	0	0	0	0	0	0	0
Team							0	0	0		0		0					
Totals				7-12	3-6	1-2	0	7	7	2	3	18	4	3	3	1	0	14

Shooting By Period		
1st FG%	7-12	58.3%
3PT%	3-6	50.0%
FT%	1-2	50%
GM FG%	7-12	58.3%
3PT%	3-6	50.0%
FT%	1-2	50.0%

Dead Ball Rebounds: 1, 1

Technical Fouls::NONE

	SJSU	Hawaii
Biggest lead	0 (1st 10:00)	16 (1st 1:25)
Best Scoring Run	2(1st 3:40)	13(1st 4:42)
Lead Changes	0	
Times Tied	0	
Time with Lead	00:00	08:59

Points from	SJSU	Hawaii
Turnovers	0	5
Paint	4	4
Second Chance	0	0
Fast Breaks	0	3
Bench	4	3

	Period by Period Scoring				
	1st	2nd	3rd	4th	TOT
SJSU	4	13	15	15	47
Hawaii	18	22	16	17	73



Period 2

Quarter Starters:

Hawaii	1 Imai K	2 Thoms A	14 Rewers B	15 Phillips D	23 McBee M
SJSU	0 Summers S	3 Nicholas N	11 Davis-Jones M	12 Singleton J	34 Smith S

Game Time	Hawaii	Score	Diff	SJSU
09:47	14 REWERS B 2pt FG in the paint, layup missed			
09:45				34 SMITH S defensive rebound (2)
09:41				3 NICHOLAS N turnover travel (2)
09:41				3 NICHOLAS N substitution out
09:41				34 SMITH S substitution out
09:41				30 MA S substitution in
09:41				44 TONGA F substitution in
09:20	1 IMAI K turnover bad pass (1)			
09:12	jump ball situation			
09:12	2 THOMS A substitution out			
09:12	12 PEREZ I substitution in			
09:07		18-7	11	0 SUMMERS S 3pt FG from turnover, jump shot made (3)
09:07				12 SINGLETON J assist (1)
08:50	15 PHILLIPS D 3pt FG , jump shot missed			
08:48				44 TONGA F defensive rebound (2)
08:40				30 MA S 3pt FG , jump shot missed
08:36	1 IMAI K defensive rebound (2)			
08:34	1 IMAI K foul drawn (1)			12 SINGLETON J foul personal (1 - 1)
08:34	1 IMAI K substitution out			
08:34	3 WAHINEKAPU L substitution in			
08:25	14 REWERS B 3pt FG , jump shot made (5)	21-7	14	
08:25	12 PEREZ I assist (1)			
08:01		21-10	11	0 SUMMERS S 3pt FG , jump shot made (6)
08:01				44 TONGA F assist (1)
07:38	15 PHILLIPS D 3pt FG , jump shot made (6)	24-10	14	
07:38	12 PEREZ I assist (2)			
07:21	3 WAHINEKAPU L foul drawn (1)			11 DAVIS-JONES M foul offensive (2 - 2)
07:21				11 DAVIS-JONES M turnover offensive (4)
07:21				12 SINGLETON J substitution out
07:21				3 NICHOLAS N substitution in
07:21				11 DAVIS-JONES M substitution out
07:21				23 FLUKER A substitution in
06:49	12 PEREZ I 2pt FG from turnover in the paint, layup missed			
06:46				3 NICHOLAS N defensive rebound (1)
06:21	14 REWERS B steal (1)			44 TONGA F turnover lost ball (1)
06:06	15 PHILLIPS D foul drawn (2)			3 NICHOLAS N foul shooting (1 - 3)
06:06	14 REWERS B substitution out			
06:06	23 MCBEE M substitution out			
06:06	11 BERRETT V substitution in			
06:06	45 DAVIES O substitution in			
06:06				0 SUMMERS S substitution out
06:06				44 TONGA F substitution out
06:06				2 JONES S substitution in



Official Basketball Play by Play - 2nd Period
San Jose St. at Hawaii
 12/03/23 SimpliFi Arena at Stan Sheriff Center, Honolulu
 2023-24 Women's Basketball

Game Time: 2:00 PM
 Game Duration: 1:50

Officials: Esther Hsu, Josh Batin, Starr Rivera

Game Time	Hawaii	Score	Diff	SJSU
06:06				34 SMITH S substitution in
06:06	15 PHILLIPS D free throw 1 - 2 made (7)	25-10	15	
06:06	15 PHILLIPS D free throw 2 - 2 made (8)	26-10	16	
06:00				30 MA S turnover bad pass (1)
05:47	11 BERRETT V 2pt FG from turnover in the paint, jump shot blocked			
05:47				34 SMITH S block (1)
05:41				3 NICHOLAS N defensive rebound (2)
05:40	3 WAHINEKAPU L steal (2)			3 NICHOLAS N turnover lost ball (3)
05:37	3 WAHINEKAPU L foul drawn (2)			3 NICHOLAS N foul shooting (2 - 4)
05:37				30 MA S substitution out
05:37				12 SINGLETON J substitution in
05:37	3 WAHINEKAPU L free throw fast break 1 - 2 made (9)	27-10	17	
05:37	3 WAHINEKAPU L free throw fast break 2 - 2 made (10)	28-10	18	
05:37	3 WAHINEKAPU L substitution out			
05:37	12 PEREZ I substitution out			
05:37	1 IMAI K substitution in			
05:37	23 MCBEE M substitution in			
05:21	45 DAVIES O foul personal (1 - 1)			12 SINGLETON J foul drawn (2)
05:12		28-12	16	34 SMITH S 2pt FG in the paint, layup made (2)
05:12				23 FLUKER A assist (1)
04:49	11 BERRETT V 2pt FG in the paint, hook shot made (2)	30-12	18	
04:22				2 JONES S turnover lost ball (1)
04:16	15 PHILLIPS D 2pt FG from turnover in the paint, layup missed			
04:14	23 MCBEE M offensive rebound (3)			
04:12	11 BERRETT V 2pt FG from turnover second chance in the paint, jump shot missed			
04:09				2 JONES S defensive rebound (2)
03:46		30-14	16	34 SMITH S 2pt FG in the paint, layup made (4)
03:46				2 JONES S assist (1)
03:33	1 IMAI K foul drawn (2)			12 SINGLETON J foul personal (2 - 5)
03:33	Timeout media			
03:33	11 BERRETT V substitution out			
03:33	45 DAVIES O substitution out			
03:33	3 WAHINEKAPU L substitution in			
03:33	14 REWERS B substitution in			
03:33				2 JONES S substitution out
03:33				12 SINGLETON J substitution out
03:33				34 SMITH S substitution out
03:33				0 SUMMERS S substitution in
03:33				30 MA S substitution in
03:33				44 TONGA F substitution in
03:33	1 IMAI K free throw 1 - 2 made (1)	31-14	17	
03:33	1 IMAI K free throw 2 - 2 made (2)	32-14	18	
03:33				3 NICHOLAS N substitution out
03:33				1 QUOW A substitution in
03:12				44 TONGA F turnover 3 seconds (2)
03:01	15 PHILLIPS D 3pt FG from turnover, jump shot made (11)	35-14	21	
03:01	1 IMAI K assist (1)			
02:27				44 TONGA F 2pt FG in the paint, jump shot missed



Official Basketball Play by Play - 2nd Period
San Jose St. at Hawaii
 12/03/23 SimpliFi Arena at Stan Sheriff Center, Honolulu
 2023-24 Women's Basketball

Game Time: 2:00 PM
Game Duration: 1:50

Officials: Esther Hsu, Josh Batin, Starr Rivera

Game Time	Hawaii	Score	Diff	SJSU
02:27				23 FLUKER A offensive rebound (1)
02:27	15 PHILLIPS D foul shooting (1 - 2)			23 FLUKER A foul drawn (1)
02:27				1 QUOW A substitution out
02:27				3 NICHOLAS N substitution in
02:27				23 FLUKER A free throw 1 - 2 missed
02:27				offensive dead ball rebound (1)
02:27		35-15	20	23 FLUKER A free throw 2 - 2 made (1)
02:27				44 TONGA F substitution out
02:27				34 SMITH S substitution in
02:15	1 IMAI K foul drawn (3)			30 MA S foul personal (1 - 6)
02:15				30 MA S substitution out
02:15				12 SINGLETON J substitution in
02:15	1 IMAI K free throw 1 - 2 made (3)	36-15	21	
02:15	1 IMAI K free throw 2 - 2 missed			
02:13				0 SUMMERS S defensive rebound (1)
01:52	jump ball situation			
01:52	3 WAHINEKAPU L steal (3)			12 SINGLETON J turnover lost ball (2)
01:52	23 MCBEE M substitution out			
01:52	22 PEACOCK J substitution in			
01:33	1 IMAI K 2pt FG from turnover in the paint, layup made (5)	38-15	23	
01:09		38-17	21	34 SMITH S 2pt FG in the paint, layup made (6)
01:09				0 SUMMERS S assist (1)
00:46	3 WAHINEKAPU L 2pt FG in the paint, layup made (12)	40-17	23	
00:20				12 SINGLETON J 3pt FG , jump shot missed
00:18	defensive rebound (10)			
00:01	1 IMAI K turnover bad pass (2)			
END OF PERIOD				
Hawaii 40-17 SJSU				



San Jose St. at Hawaii

12/03/23 SimpliFi Arena at Stan Sheriff Center, Honolulu
2023-24 Women's Basketball

Officials: Esther Hsu, Josh Batin, Starr Rivera

San Jose St. - 13

NO.	Name	F	Min	FG			3P			FT			Rebounds			Fouls		TP	AS	TO	ST	Blocks		+/-									
				M-A	M-A	M-A	OR	DR	TOT	PF	FD	OR	DR	TOT	BS	BA																	
23	Alani Fluker	F	07:21	0-0	0-0	1-2	1	0	1	0	1	1	1	0	0	0	1	1	0	0	0	0	-9										
24	Amhyia Moreland	F	00:00	0-0	0-0	0-0	0	0	0	0	0	0	0	0	0	0	0	0	0	0	0	0	0										
0	Sydni Summers	G	07:27	2-2	2-2	0-0	0	1	1	0	0	6	1	0	0	0	0	1	0	0	0	0	-7										
2	Sophia Jones	G	02:33	0-0	0-0	0-0	0	1	1	0	0	0	1	1	0	0	0	1	0	0	0	0	-2										
30	Sabrina Ma	G	05:22	0-1	0-1	0-0	0	0	0	1	0	0	0	1	0	0	0	1	0	0	0	0	-6										
11	Marisa Davis-Jones		02:39	0-0	0-0	0-0	0	0	0	1	0	0	0	1	0	0	0	1	0	0	0	0	0										
44	Finau Tonga		04:41	0-1	0-0	0-0	0	1	1	0	0	0	1	2	0	0	0	1	2	0	0	0	-4										
3	Nailea Nicholas		06:34	0-0	0-0	0-0	0	2	2	2	0	0	0	2	0	0	0	2	0	0	0	0	-6										
34	Semaj Smith		05:19	3-3	0-0	0-0	0	1	1	0	0	6	0	0	0	0	0	0	0	1	0	0	-5										
12	Jasmine Singleton		06:58	0-1	0-1	0-0	0	0	0	2	1	0	1	1	0	0	0	1	1	0	0	0	-3										
1	Aniyah Quow		01:06	0-0	0-0	0-0	0	0	0	0	0	0	0	0	0	0	0	0	0	0	0	0	-3										
Team												0	0	0	0	0	0	0	0	0	0	0	0	0	0	0	0	0	0	0	0	0	0
Totals				5-8	2-4	1-2	1	6	7	6	2	13	5	8	0	1	0	0	0	0	0	0	0	0	-9								

Shooting By Period		
2 nd FG%	5-8	62.5%
3PT%	2-4	50.0%
FT%	1-2	50%
GM FG%	5-8	62.5%
3PT%	2-4	50.0%
FT%	1-2	50.0%

Dead Ball Rebounds: 1, 0

Technical Fouls::NONE

Hawaii - 22

NO.	Name	F	Min	FG			3P			FT			Rebounds			Fouls		TP	AS	TO	ST	Blocks		+/-									
				M-A	M-A	M-A	OR	DR	TOT	PF	FD	OR	DR	TOT	BS	BA																	
12	Imani Perez	F	03:35	0-1	0-0	0-0	0	0	0	0	0	0	0	0	0	0	2	0	0	0	0	0	4										
14	Brooklyn Rewers	C	07:27	1-2	1-1	0-0	0	0	0	0	0	3	0	0	1	0	0	0	1	0	0	0	7										
3	Lily Wahinekapu	G	06:30	1-1	0-0	2-2	0	0	0	0	2	4	0	0	2	0	0	0	2	0	0	0	14										
23	MeiLani McBee	G	07:39	0-0	0-0	0-0	1	0	1	0	0	0	0	0	0	0	0	0	0	0	0	0	3										
45	Olivia Davies	G	02:33	0-0	0-0	0-0	0	0	0	1	0	0	0	0	0	0	0	0	0	0	0	0	2										
2	Ashley Thoms		00:48	0-0	0-0	0-0	0	0	0	0	0	0	0	0	0	0	0	0	0	0	0	0	0										
15	Daejah Phillips		10:00	2-4	2-3	2-2	0	0	0	1	1	8	0	0	0	0	0	0	0	0	0	0	9										
11	Vivienne Berrett		02:33	1-3	0-0	0-0	0	0	0	0	0	2	0	0	0	0	0	0	0	0	1	2											
1	Kelsie Imai		07:03	1-1	0-0	3-4	0	1	1	0	3	5	1	2	0	0	0	0	0	0	0	2											
22	Jade Peacock		01:52	0-0	0-0	0-0	0	0	0	0	0	0	0	0	0	0	0	0	0	0	0	2											
Team												0	1	1	0	0	0	0	0	0	0	0	0	0	0	0	0	0	0	0	0	0	0
Totals				6-12	3-4	7-8	1	2	3	2	6	22	3	2	3	0	1	9	0	0	0	0	0	0	9								

Shooting By Period		
2 nd FG%	6-12	50.0%
3PT%	3-4	75.0%
FT%	7-8	87.5%
GM FG%	6-12	50.0%
3PT%	3-4	75.0%
FT%	7-8	87.5%

Dead Ball Rebounds: 0, 0

Technical Fouls::NONE

	SJSU	Hawaii
Biggest lead	0 (1 st 10:00)	23 (2 nd 1:33)
Best Scoring Run	3(2 nd 9:07)	7(2 nd 5:37)
Lead Changes	0	
Times Tied	0	
Time with Lead	00:00	09:47

	SJSU	Hawaii
Points from		
Turnovers	3	9
Paint	6	6
Second Chance	1	0
Fast Breaks	0	2
Bench	6	15

Period by Period Scoring					
	1st	2nd	3rd	4th	TOT
SJSU	4	13	15	15	47
Hawaii	18	22	16	17	73



San Jose St. at Hawaii

12/03/23 SimpliFi Arena at Stan Sheriff Center, Honolulu
2023-24 Women's Basketball

Officials: Esther Hsu, Josh Batin, Starr Rivera

San Jose St. - 17

NO.	Name	F	Min	FG			3P			FT			Rebounds			Fouls		TP	AS	TO	ST	Blocks		+/-
				M-A	M-A	M-A	OR	DR	TOT	PF	FD	BS	BA											
23	Alani Fluker	F	09:18	0-0	0-0	1-2	1	0	1	0	1	1	1	0	0	0	0	0	0	0	0	0	-14	
24	Amhyia Moreland	F	04:39	0-1	0-0	0-0	0	0	0	2	0	0	0	0	0	1	0	0	1	0	0	0	-11	
0	Sydni Summers	G	15:17	2-4	2-3	0-0	0	1	1	0	0	6	1	0	0	0	0	0	0	0	0	0	-16	
2	Sophia Jones	G	05:50	0-1	0-0	0-0	0	2	2	0	0	0	1	1	0	0	0	0	0	0	0	0	-9	
30	Sabrina Ma	G	10:33	0-1	0-1	0-0	0	1	1	1	0	0	0	0	1	0	0	0	0	0	0	0	-13	
3	Nailea Nicholas		13:03	0-2	0-0	0-0	0	2	2	2	0	0	0	0	3	0	0	0	0	0	0	0	-16	
11	Marisa Davis-Jones		10:42	1-1	0-0	0-0	0	0	0	2	1	2	0	4	0	0	0	0	0	0	0	0	-9	
12	Jasmine Singleton		14:11	0-3	0-2	0-0	1	0	1	2	2	0	1	2	0	0	0	0	0	0	0	0	-12	
34	Semaj Smith		09:25	3-4	0-0	0-0	0	2	2	0	0	6	0	0	0	0	1	1	0	0	0	0	-10	
44	Finau Tonga		05:56	1-3	0-0	0-0	1	1	2	0	0	2	1	2	0	0	0	0	0	0	0	0	-2	
1	Aniyah Quow		01:06	0-0	0-0	0-0	0	0	0	0	0	0	0	0	0	0	0	0	0	0	0	0	-3	
Team							0	2	2			0			1									
Totals				7-20	2-6	1-2	3	11	14	9	4	17	5	14	1	1	1	1					-23	

Shooting By Period		
1st FG%	2-12	16.7%
3PT%	0-2	0.0%
FT%	0-0	0%
2nd FG%	5-8	62.5%
3PT%	2-4	50.0%
FT%	1-2	50%
GM FG%	7-20	35.0%
3PT%	2-6	33.3%
FT%	1-2	50.0%

Dead Ball Rebounds: 1, 0

Technical Fouls::NONE

Hawaii - 40

NO.	Name	F	Min	FG			3P			FT			Rebounds			Fouls		TP	AS	TO	ST	Blocks		+/-
				M-A	M-A	M-A	OR	DR	TOT	PF	FD	BS	BA											
12	Imani Perez	F	11:16	1-3	0-0	0-0	0	1	1	1	1	2	2	0	0	0	0	0	0	0	0	0	18	
14	Brooklyn Rewers	C	15:53	2-3	1-1	0-0	0	2	2	0	0	5	0	1	1	1	0	0	1	1	0	0	22	
3	Lily Wahinekapu	G	14:31	4-5	2-2	2-2	0	1	1	0	2	12	1	1	3	0	0	0	0	0	0	0	29	
23	MeiLani McBee	G	15:03	1-2	1-2	0-0	1	2	3	1	1	3	0	0	0	0	0	0	0	0	0	0	15	
45	Olivia Davies	G	07:37	0-0	0-0	0-0	0	0	0	1	0	0	2	0	0	0	0	0	0	0	0	0	13	
15	Daejah Phillips		14:56	3-7	2-5	3-4	0	0	0	1	2	11	1	1	2	0	0	0	0	0	0	0	12	
1	Kelsie Imai		09:02	1-1	0-0	3-4	0	2	2	0	3	5	1	2	0	0	0	0	0	0	0	0	1	
11	Vivienne Berrett		04:07	1-3	0-0	0-0	0	0	0	0	0	2	0	0	0	0	0	0	0	0	1	1		
22	Jade Peacock		06:22	0-0	0-0	0-0	0	0	0	0	0	0	0	0	0	0	0	0	0	0	0	0	4	
2	Ashley Thoms		01:13	0-0	0-0	0-0	0	0	0	0	0	0	0	0	0	0	0	0	0	0	0	0		
Team							0	1	1			0			0									
Totals				13-24	6-10	8-10	1	9	10	4	9	40	7	5	6	1	1	1	1				23	

Shooting By Period		
1st FG%	7-12	58.3%
3PT%	3-6	50.0%
FT%	1-2	50%
2nd FG%	6-12	50.0%
3PT%	3-4	75.0%
FT%	7-8	87.5%
GM FG%	13-24	54.2%
3PT%	6-10	60.0%
FT%	8-10	80.0%

Dead Ball Rebounds: 1, 1

Technical Fouls::NONE

	SJSU	Hawaii
Biggest lead	0 (1st 10:00)	23 (2nd 1:33)
Best Scoring Run	5(2nd 9:07)	13(1st 4:42)
Lead Changes	0	
Times Tied	0	
Time with Lead	00:00	18:59

Points from	SJSU	Hawaii
Turnovers	3	14
Paint	10	10
Second Chance	1	0
Fast Breaks	0	5
Bench	10	18

	Period by Period Scoring				
	1st	2nd	3rd	4th	TOT
SJSU	4	13	15	15	47
Hawaii	18	22	16	17	73



San Jose St. at Hawaii

12/03/23 SimpliFi Arena at Stan Sheriff Center, Honolulu
2023-24 Women's Basketball

Officials: Esther Hsu, Josh Batin, Starr Rivera

Period 3

Quarter Starters:

Hawaii	3 Wahinekapu L	12 Perez I	14 Rewers B	23 McBee M	45 Davies O
SJSU	0 Summers S	3 Nicholas N	11 Davis-Jones M	12 Singleton J	24 Moreland A

Game Time	Hawaii	Score	Diff	SJSU
10:00	1 IMAI K substitution out			
10:00	15 PHILLIPS D substitution out			
10:00	22 PEACOCK J substitution out			
10:00	12 PEREZ I substitution in			
10:00	23 MCBEE M substitution in			
10:00	45 DAVIES O substitution in			
10:00				23 FLUKER A substitution out
10:00				34 SMITH S substitution out
10:00				11 DAVIS-JONES M substitution in
10:00				24 MORELAND A substitution in
09:54	45 DAVIES O foul personal (2 - 1)			12 SINGLETON J foul drawn (3)
09:33		40-19	21	24 MORELAND A 2pt FG in the paint, jump shot made (2)
09:33				0 SUMMERS S assist (2)
09:06	45 DAVIES O foul drawn (1)			24 MORELAND A foul shooting (3 - 1)
09:06				24 MORELAND A substitution out
09:06				23 FLUKER A substitution in
09:06	45 DAVIES O free throw 1 - 3 made (1)	41-19	22	
09:06	45 DAVIES O free throw 2 - 3 made (2)	42-19	23	
09:06	45 DAVIES O free throw 3 - 3 made (3)	43-19	24	
08:48	23 MCBEE M foul shooting (2 - 2)			11 DAVIS-JONES M foul drawn (2)
08:48		43-20	23	11 DAVIS-JONES M free throw 1 - 2 made (3)
08:48				11 DAVIS-JONES M free throw 2 - 2 missed
08:47	14 REWERS B defensive rebound (3)			
08:31	12 PEREZ I 2pt FG in the paint, driving layup made (4)	45-20	25	
08:19	jump ball situation			
08:19	45 DAVIES O steal (1)			3 NICHOLAS N turnover lost ball (4)
08:11	3 WAHINEKAPU L foul drawn (3)			0 SUMMERS S foul personal (1 - 2)
07:49	14 REWERS B 2pt FG from turnover in the paint, pull up jump shot missed			
07:47				3 NICHOLAS N defensive rebound (3)
07:18	14 REWERS B steal (2)			3 NICHOLAS N turnover lost ball (5)
07:10	12 PEREZ I 2pt FG from turnover in the paint, layup made (6)	47-20	27	
07:10	3 WAHINEKAPU L assist (2)			
07:04				Timeout 30 Sec
07:04	Timeout media			
07:02				12 SINGLETON J substitution out
07:02				2 JONES S substitution in
07:02				3 NICHOLAS N substitution out
07:02				23 FLUKER A substitution out
07:02				30 MA S substitution in
07:02				44 TONGA F substitution in
07:02	45 DAVIES O substitution out			
07:02	15 PHILLIPS D substitution in			



Officials: Esther Hsu, Josh Batin, Starr Rivera

Game Time	Hawaii	Score	Diff	SJSU
07:00				2 JONES S substitution out
07:00				12 SINGLETON J substitution in
06:44				30 MA S 3pt FG , jump shot missed
06:43	defensive dead ball rebound (3)			
06:43	23 MCBEE M foul drawn (2)			11 DAVIS-JONES M foul personal (3 - 3)
06:24	14 REWERS B 2pt FG in the paint, layup missed			
06:20				11 DAVIS-JONES M defensive rebound (1)
06:17				12 SINGLETON J 2pt FG in the paint, layup missed
06:14	12 PEREZ I defensive rebound (2)			
06:12	15 PHILLIPS D foul drawn (3)			30 MA S foul shooting (2 - 4)
06:12	23 MCBEE M substitution out			
06:12	2 THOMS A substitution in			
06:12	15 PHILLIPS D free throw fast break 1 - 2 made (12)	48-20	28	
06:12	15 PHILLIPS D free throw fast break 2 - 2 made (13)	49-20	29	
06:12	14 REWERS B substitution out			
06:12	11 BERRETT V substitution in			
05:58	11 BERRETT V foul shooting (1 - 3)			11 DAVIS-JONES M foul drawn (3)
05:58				11 DAVIS-JONES M free throw 1 - 2 missed
05:58				offensive dead ball rebound (2)
05:58		49-21	28	11 DAVIS-JONES M free throw 2 - 2 made (4)
05:40	3 WAHINEKAPU L foul offensive (1 - 4)			30 MA S foul drawn (1)
05:40	3 WAHINEKAPU L turnover offensive (2)			
05:40	3 WAHINEKAPU L substitution out			
05:40	1 IMAI K substitution in			
05:10				30 MA S 3pt FG from turnover, jump shot missed
05:07				offensive dead ball rebound (3)
05:07	2 THOMS A foul personal (1 - 5)			30 MA S foul drawn (2)
05:07				44 TONGA F substitution out
05:07				24 MORELAND A substitution in
05:07	11 BERRETT V substitution out			
05:07	14 REWERS B substitution in			
05:07		49-22	27	30 MA S free throw fast break 1 - 2 made (1)
05:07				30 MA S free throw fast break 2 - 2 missed
05:06	12 PEREZ I defensive rebound (3)			
04:54	15 PHILLIPS D foul offensive (2 - 6)			30 MA S foul drawn (3)
04:54	15 PHILLIPS D turnover offensive (2)			
04:54				Timeout media
04:45	2 THOMS A foul drawn (1)			11 DAVIS-JONES M foul offensive (4 - 5)
04:45				11 DAVIS-JONES M turnover offensive (5)
04:35	1 IMAI K foul drawn (4)			11 DAVIS-JONES M foul personal (5 - 6)
04:35				11 DAVIS-JONES M substitution out
04:35				3 NICHOLAS N substitution in
04:35	1 IMAI K free throw 1 - 2 made (6)	50-22	28	
04:35	1 IMAI K free throw 2 - 2 made (7)	51-22	29	
04:17				3 NICHOLAS N substitution out
04:17				21 KELEMENI S substitution in
04:13				0 SUMMERS S 3pt FG , jump shot missed
04:10				24 MORELAND A offensive rebound (1)
04:09	14 REWERS B foul shooting (1 - 7)			24 MORELAND A foul drawn (1)



San Jose St. at Hawaii

12/03/23 SimpliFi Arena at Stan Sheriff Center, Honolulu
2023-24 Women's Basketball

Officials: Esther Hsu, Josh Batin, Starr Rivera

Game Time	Hawaii	Score	Diff	SJSU
04:09	1 IMAI K substitution out			
04:09	3 WAHINEKAPU L substitution in			
04:09		51-23	28	24 MORELAND A free throw 1 - 2 made (3)
04:09		51-24	27	24 MORELAND A free throw 2 - 2 made (4)
03:51	14 REWERS B turnover lost ball (2)			
03:51	2 THOMS A substitution out			
03:51	45 DAVIES O substitution in			
03:32				24 MORELAND A 2pt FG from turnover outside the paint, jump shot missed
03:30	12 PEREZ I defensive rebound (4)			
03:20	15 PHILLIPS D foul drawn (4)			12 SINGLETON J foul personal (3 - 7)
03:20				24 MORELAND A substitution out
03:20				34 SMITH S substitution in
03:20	15 PHILLIPS D free throw 1 - 2 made (14)	52-24	28	
03:20	15 PHILLIPS D free throw 2 - 2 made (15)	53-24	29	
03:00				21 KELEMENI S 3pt FG , jump shot missed
02:58				21 KELEMENI S offensive rebound (1)
02:54	12 PEREZ I steal (1)			12 SINGLETON J turnover lost ball (3)
02:42	14 REWERS B 2pt FG from turnover in the paint, layup missed			
02:39				30 MA S defensive rebound (2)
02:29		53-27	26	0 SUMMERS S 3pt FG , jump shot made (9)
02:11	12 PEREZ I 2pt FG in the paint, layup made (8)	55-27	28	
02:11	45 DAVIES O assist (3)			
01:54				0 SUMMERS S 2pt FG in the paint, pull up jump shot missed
01:52	14 REWERS B defensive rebound (4)			
01:52	45 DAVIES O foul drawn (2)			34 SMITH S foul personal (1 - 8)
01:52	12 PEREZ I substitution out			
01:52	22 PEACOCK J substitution in			
01:52				0 SUMMERS S substitution out
01:52				12 SINGLETON J substitution out
01:52				2 JONES S substitution in
01:52				3 NICHOLAS N substitution in
01:52	45 DAVIES O free throw fast break 1 - 2 missed			
01:52	offensive dead ball rebound (4)			
01:52	45 DAVIES O free throw fast break 2 - 2 made (4)	56-27	29	
01:52	45 DAVIES O substitution out			
01:52	1 IMAI K substitution in			
01:21				30 MA S 2pt FG outside the paint, jump shot missed
01:18	3 WAHINEKAPU L defensive rebound (2)			
01:16	15 PHILLIPS D 3pt FG , jump shot missed			
01:12				defensive rebound (20)
01:02		56-29	27	34 SMITH S 2pt FG in the paint, jump shot made (8)
01:02				3 NICHOLAS N assist (1)
01:02	22 PEACOCK J foul shooting (1 - 8)			34 SMITH S foul drawn (1)
01:02		56-30	26	34 SMITH S free throw 1 - 1 made (9)
00:49	1 IMAI K foul offensive (1 - 9)			2 JONES S foul drawn (1)
00:49	1 IMAI K turnover offensive (3)			
00:33		56-32	24	34 SMITH S 2pt FG from turnover in the paint, layup made (11)
00:33				3 NICHOLAS N assist (2)



Official Basketball Play by Play - 3rd Period
San Jose St. at Hawaii
12/03/23 SimpliFi Arena at Stan Sheriff Center, Honolulu
2023-24 Women's Basketball

Game Time: 2:00 PM
Game Duration: 1:50

Officials: Esther Hsu, Josh Batin, Starr Rivera

Game Time	Hawaii	Score	Diff	SJSU
00:04	22 PEACOCK J 3pt FG , jump shot missed			
00:02				34 SMITH S defensive rebound (3)
00:00				21 KELEMENI S 3pt FG , jump shot missed
00:00	1 IMAI K defensive rebound (3)			
END OF PERIOD				
Hawaii 56-32 SJSU				



San Jose St. at Hawaii

12/03/23 SimpliFi Arena at Stan Sheriff Center, Honolulu
2023-24 Women's Basketball

Officials: Esther Hsu, Josh Batin, Starr Rivera

San Jose St. - 15

NO.	Name	F	Min	FG			Rebounds			Fouls		TP	AS	TO	ST	Blocks		+/-
				M-A	M-A	M-A	OR	DR	TOT	PF	FD					BS	BA	
23	Alani Fluker	F	02:04	0-0	0-0	0-0	0	0	0	0	0	0	0	0	0	0	0	-6
24	Amhyia Moreland	F	02:41	1-2	0-0	2-2	1	0	1	1	1	4	0	0	0	0	0	3
0	Sydni Summers	G	08:08	1-3	1-2	0-0	0	0	0	1	0	3	1	0	0	0	0	-5
2	Sophia Jones	G	01:54	0-0	0-0	0-0	0	0	0	0	1	0	0	0	0	0	0	4
30	Sabrina Ma	G	07:02	0-3	0-2	1-2	0	1	1	1	3	1	0	0	0	0	0	3
11	Marisa Davis-Jones		05:25	0-0	0-0	2-4	0	1	1	3	2	2	0	1	0	0	0	-4
44	Finau Tonga		01:55	0-0	0-0	0-0	0	0	0	0	0	0	0	0	0	0	0	-1
12	Jasmine Singleton		08:06	0-1	0-0	0-0	0	0	0	1	1	0	0	1	0	0	0	-5
3	Nailea Nicholas		05:08	0-0	0-0	0-0	0	1	1	0	0	0	2	2	0	0	0	-2
21	Sofia Kelemen		04:17	0-2	0-2	0-0	1	0	1	0	0	0	0	0	0	0	0	5
34	Semaj Smith		03:20	2-2	0-0	1-1	0	1	1	1	1	5	0	0	0	0	0	3
Team							0	1	1			0		0				
Totals				4-13	1-6	6-9	2	5	7	8	9	15	3	4	0	0	0	-1

Shooting By Period		
3 rd FG%	4-13	30.8%
3PT%	1-6	16.7%
FT%	6-9	66.7%
GM FG%	4-13	30.8%
3PT%	1-6	16.7%
FT%	6-9	66.7%

Dead Ball Rebounds: 2, 0

Technical Fouls::NONE

Hawaii - 16

NO.	Name	F	Min	FG			Rebounds			Fouls		TP	AS	TO	ST	Blocks		+/-
				M-A	M-A	M-A	OR	DR	TOT	PF	FD					BS	BA	
12	Imani Perez	F	08:08	3-3	0-0	0-0	0	3	3	0	0	6	0	0	1	0	0	5
14	Brooklyn Rewers	C	08:55	0-3	0-0	0-0	0	2	2	1	0	0	0	1	1	0	0	2
3	Lily Wahinekapu	G	08:29	0-0	0-0	0-0	0	1	1	1	1	0	1	1	0	0	0	0
23	MeiLani McBee	G	03:48	0-0	0-0	0-0	0	0	0	1	1	0	0	0	0	0	0	4
45	Olivia Davies	G	04:57	0-0	0-0	4-5	0	0	0	1	2	4	1	0	1	0	0	6
15	Daejah Phillips		07:02	0-1	0-1	4-4	0	0	0	1	2	4	0	1	0	0	0	-3
2	Ashley Thoms		02:21	0-0	0-0	0-0	0	0	0	1	1	0	0	0	0	0	0	0
11	Vivienne Berrett		01:05	0-0	0-0	0-0	0	0	0	1	0	0	0	0	0	0	0	-1
1	Kelsie Imai		03:23	0-0	0-0	2-2	0	1	1	1	1	2	0	1	0	0	0	-4
22	Jade Peacock		01:52	0-1	0-1	0-0	0	0	0	1	0	0	0	0	0	0	0	-4
Team							0	0	0			0		0				
Totals				3-8	0-2	10-11	0	7	7	9	8	16	2	4	3	0	0	1

Shooting By Period		
3 rd FG%	3-8	37.5%
3PT%	0-2	0.0%
FT%	10-11	90.9%
GM FG%	3-8	37.5%
3PT%	0-2	0.0%
FT%	10-11	90.9%

Dead Ball Rebounds: 1, 1

Technical Fouls::NONE

	SJSU	Hawaii
Biggest lead	0 (1 st 10:00)	29 (3 rd 6:12)
Best Scoring Run	5(3 rd 0:33)	6(3 rd 6:12)
Lead Changes	0	
Times Tied	0	
Time with Lead	00:00	09:33

	SJSU	Hawaii
Points from		
Turnovers	3	4
Paint	6	6
Second Chance	3	0
Fast Breaks	1	3
Bench	7	6

	Period by Period Scoring				
	1st	2nd	3rd	4th	TOT
SJSU	4	13	15	15	47
Hawaii	18	22	16	17	73



San Jose St. at Hawaii

12/03/23 SimpliFi Arena at Stan Sheriff Center, Honolulu
2023-24 Women's Basketball

Officials: Esther Hsu, Josh Batin, Starr Rivera

Period 4

Quarter Starters:

Hawaii	1 Imai K	3 Wahinekapu L	14 Rewers B	15 Phillips D	22 Peacock J
SJSU	3 Nicholas N	12 Singleton J	21 Kelemeni S	24 Moreland A	30 Ma S

Game Time	Hawaii	Score	Diff	SJSU
10:00				2 JONES S substitution out
10:00				34 SMITH S substitution out
10:00				12 SINGLETON J substitution in
10:00				24 MORELAND A substitution in
09:49		56-34	22	3 NICHOLAS N 2pt FG in the paint, driving layup made (2)
09:27	1 IMAI K 3pt FG , jump shot missed			
09:25	offensive rebound (18)			
09:13	14 REWERS B 3pt FG second chance, jump shot missed			
09:11				12 SINGLETON J defensive rebound (2)
09:05				24 MORELAND A 2pt FG in the paint, layup missed
09:03				30 MA S offensive rebound (3)
08:55		56-36	20	24 MORELAND A 2pt FG second chance outside the paint, jump shot made (6)
08:55				12 SINGLETON J assist (2)
08:34	14 REWERS B 2pt FG in the paint, layup missed			
08:29	14 REWERS B offensive rebound (5)			
08:28	14 REWERS B 2pt FG second chance in the paint, layup made (7)	58-36	22	
08:08				3 NICHOLAS N 2pt FG outside the paint, jump shot missed
08:05				24 MORELAND A offensive rebound (2)
08:05	jump ball situation			
08:05	15 PHILLIPS D steal (3)			24 MORELAND A turnover lost ball (1)
08:05	1 IMAI K substitution out			
08:05	22 PEACOCK J substitution out			
08:05	12 PEREZ I substitution in			
08:05	23 MCBEE M substitution in			
08:05				21 KELEMENI S substitution out
08:05				23 FLUKER A substitution in
07:47	14 REWERS B 2pt FG from turnover outside the paint, jump shot made (9)	60-36	24	
07:47	15 PHILLIPS D assist (2)			
07:36				23 FLUKER A turnover bad pass (1)
07:36				23 FLUKER A substitution out
07:36				21 KELEMENI S substitution in
07:21	15 PHILLIPS D turnover bad pass (3)			3 NICHOLAS N steal (1)
07:15				30 MA S 2pt FG from turnover in the paint, pull up jump shot missed
07:12	23 MCBEE M defensive rebound (4)			
07:08	12 PEREZ I 2pt FG in the paint, layup blocked			
07:08				24 MORELAND A block (1)
07:05	offensive rebound (21)			
07:05	3 WAHINEKAPU L substitution out			
07:05	15 PHILLIPS D substitution out			
07:05	2 THOMS A substitution in			



San Jose St. at Hawaii

12/03/23 SimpliFi Arena at Stan Sheriff Center, Honolulu
2023-24 Women's Basketball

Officials: Esther Hsu, Josh Batin, Starr Rivera

Game Time	Hawaii	Score	Diff	SJSU
07:05	45 DAVIES O substitution in			
07:05				30 MA S substitution out
07:05				2 JONES S substitution in
07:00	14 REWERS B foul offensive (2 - 1)			3 NICHOLAS N foul drawn (1)
07:00	14 REWERS B turnover offensive (3)			
06:47				2 JONES S turnover travel (2)
06:24	12 PEREZ I turnover bad pass (1)			21 KELEMENI S steal (1)
06:20				21 KELEMENI S 2pt FG from turnover in the paint, layup blocked
06:20	23 MCBEE M block (1)			
06:20				offensive rebound (25)
06:12				21 KELEMENI S 3pt FG from turnover second chance, jump shot missed
06:10				24 MORELAND A offensive rebound (3)
06:07		60-38	22	21 KELEMENI S 2pt FG from turnover second chance in the paint, layup made (2)
06:07				24 MORELAND A assist (1)
05:46	14 REWERS B 2pt FG outside the paint, jump shot missed			
05:43				2 JONES S defensive rebound (3)
05:26		60-40	20	24 MORELAND A 2pt FG in the paint, pull up jump shot made (8)
05:26				12 SINGLETON J assist (3)
05:21	Timeout 30 Sec			
05:21	Timeout media			
05:21	14 REWERS B substitution out			
05:21	45 DAVIES O substitution out			
05:21	1 IMAI K substitution in			
05:21	11 BERRETT V substitution in			
05:21				12 SINGLETON J substitution out
05:21				24 MORELAND A substitution out
05:21				30 MA S substitution in
05:21				44 TONGA F substitution in
04:59	1 IMAI K foul drawn (5)			44 TONGA F foul shooting (1 - 1)
04:59				44 TONGA F substitution out
04:59				34 SMITH S substitution in
04:59	1 IMAI K free throw 1 - 2 made (8)	61-40	21	
04:59	1 IMAI K free throw 2 - 2 made (9)	62-40	22	
04:41		62-42	20	34 SMITH S 2pt FG in the paint, jump shot made (13)
04:41				3 NICHOLAS N assist (3)
04:19	11 BERRETT V 2pt FG in the paint, jump shot missed			
04:19				defensive rebound (28)
04:19	1 IMAI K substitution out			
04:19	2 THOMS A substitution out			
04:19	3 WAHINEKAPU L substitution in			
04:19	15 PHILLIPS D substitution in			
04:03				21 KELEMENI S 3pt FG , jump shot missed
04:00				2 JONES S offensive rebound (4)
03:51				34 SMITH S 2pt FG second chance in the paint, hook shot missed
03:48	3 WAHINEKAPU L defensive rebound (3)			
03:34	11 BERRETT V turnover travel (1)			



San Jose St. at Hawaii

12/03/23 SimpliFi Arena at Stan Sheriff Center, Honolulu
2023-24 Women's Basketball

Officials: Esther Hsu, Josh Batin, Starr Rivera

Game Time	Hawaii	Score	Diff	SJSU
03:34				34 SMITH S substitution out
03:34				24 MORELAND A substitution in
03:34	11 BERRETT V substitution out			
03:34	14 REWERS B substitution in			
03:16		62-44	18	24 MORELAND A 2pt FG from turnover in the paint, turnaround jump shot made (10)
03:16				3 NICHOLAS N assist (4)
03:16	14 REWERS B foul shooting (3 - 2)			24 MORELAND A foul drawn (2)
03:16				24 MORELAND A free throw 1 - 1 missed
03:16	3 WAHINEKAPU L defensive rebound (4)			
02:54	12 PEREZ I 2pt FG in the paint, layup made (10)	64-44	20	
02:54	23 MCBEE M assist (1)			
02:41	15 PHILLIPS D steal (4)			3 NICHOLAS N turnover bad pass (6)
02:35	12 PEREZ I 2pt FG fast break from turnover in the paint, layup made (12)	66-44	22	
02:35	15 PHILLIPS D assist (3)			
02:18				24 MORELAND A 2pt FG in the paint, layup missed
02:15	3 WAHINEKAPU L defensive rebound (5)			
02:11	15 PHILLIPS D foul drawn (5)			30 MA S foul shooting (3 - 2)
02:11	15 PHILLIPS D free throw fast break 1 - 2 made (16)	67-44	23	
02:11	15 PHILLIPS D free throw fast break 2 - 2 made (17)	68-44	24	
01:59				30 MA S turnover bad pass (2)
01:52	23 MCBEE M 3pt FG from turnover, jump shot made (6)	71-44	27	
01:52	3 WAHINEKAPU L assist (3)			
01:36	14 REWERS B steal (3)			3 NICHOLAS N turnover bad pass (7)
01:31	3 WAHINEKAPU L 2pt FG fast break from turnover in the paint, layup made (14)	73-44	29	
01:23				Timeout 60 Sec
01:23	3 WAHINEKAPU L substitution out			
01:23	14 REWERS B substitution out			
01:23	15 PHILLIPS D substitution out			
01:23	23 MCBEE M substitution out			
01:23	1 IMAI K substitution in			
01:23	11 BERRETT V substitution in			
01:23	13 BIRDSONG H substitution in			
01:23	22 PEACOCK J substitution in			
01:23				21 KELEMENI S substitution out
01:23				34 SMITH S substitution in
01:10	12 PEREZ I steal (2)			24 MORELAND A turnover bad pass (2)
01:07	11 BERRETT V turnover travel (2)			
00:50		73-47	26	24 MORELAND A 3pt FG from turnover, jump shot made (13)
00:41	13 BIRDSONG H 3pt FG , jump shot missed			
00:39	22 PEACOCK J offensive rebound (1)			
00:23	1 IMAI K foul offensive (2 - 3)			2 JONES S foul drawn (2)
00:23	1 IMAI K turnover offensive (4)			
00:06				2 JONES S turnover lost ball (3)
END OF GAME				
Hawaii 73-47 SJSU				



San Jose St. at Hawaii

12/03/23 SimpliFi Arena at Stan Sheriff Center, Honolulu
2023-24 Women's Basketball

Officials: Esther Hsu, Josh Batin, Starr Rivera

San Jose St. - 15

NO.	Name	F	Min	FG			Rebounds			Fouls		TP	AS	TO	ST	Blocks		+/-
				M-A	M-A	M-A	OR	DR	TOT	PF	FD					BS	BA	
23	Alani Fluker	F	00:29	0-0	0-0	0-0	0	0	0	0	0	0	1	0	0	0	0	-2
24	Amhyia Moreland	F	08:13	4-6	1-1	0-1	2	0	2	0	1	9	1	2	0	1	0	-2
0	Sydni Summers	G	00:00	0-0	0-0	0-0	0	0	0	0	0	0	0	0	0	0	0	0
2	Sophia Jones	G	07:05	0-0	0-0	0-0	1	1	2	0	1	0	0	2	0	0	0	-2
30	Sabrina Ma	G	08:16	0-1	0-0	0-0	1	0	1	1	0	0	0	1	0	0	0	-6
3	Nailea Nicholas		10:00	1-2	0-0	0-0	0	0	0	0	1	2	2	2	1	0	0	-2
12	Jasmine Singleton		04:39	0-0	0-0	0-0	0	1	1	0	0	0	2	0	0	0	0	4
21	Sofia Kelemen		08:08	1-4	0-2	0-0	0	0	0	0	0	2	0	0	1	0	1	-3
44	Finau Tonga		00:22	0-0	0-0	0-0	0	0	0	1	0	0	0	0	0	0	0	0
34	Semaj Smith		02:48	1-2	0-0	0-0	0	0	0	0	0	2	0	0	0	0	0	3
Team							1	1	2			0		0				
Totals				7-15	1-3	0-1	5	3	8	2	3	15	5	8	2	1	1	-2

Shooting By Period		
4 th FG%	7-15	46.7%
3PT%	1-3	33.3%
FT%	0-1	0%
GM FG%	7-15	46.7%
3PT%	1-3	33.3%
FT%	0-1	0.0%

Dead Ball Rebounds: 0, 0

Technical Fouls::NONE

Hawaii - 17

NO.	Name	F	Min	FG			Rebounds			Fouls		TP	AS	TO	ST	Blocks		+/-
				M-A	M-A	M-A	OR	DR	TOT	PF	FD					BS	BA	
12	Imani Perez	F	08:05	2-3	0-0	0-0	0	0	0	0	0	4	0	1	1	0	1	4
14	Brooklyn Rewers	C	06:50	2-5	0-1	0-0	1	0	1	2	0	4	0	1	1	0	0	5
3	Lily Wahinekapu	G	05:51	1-1	0-0	0-0	0	3	3	0	0	2	1	0	0	0	0	9
23	MeiLani McBee	G	06:42	1-1	1-1	0-0	0	1	1	0	0	3	1	0	0	1	0	7
45	Olivia Davies	G	01:44	0-0	0-0	0-0	0	0	0	0	0	0	0	0	0	0	0	-4
2	Ashley Thoms		02:46	0-0	0-0	0-0	0	0	0	0	0	0	0	0	0	0	0	-4
1	Kelsie Imai		04:20	0-1	0-1	2-2	0	0	0	1	1	2	0	1	0	0	0	-5
11	Vivienne Berrett		03:10	0-1	0-0	0-0	0	0	0	0	0	0	0	2	0	0	0	-3
15	Daejah Phillips		05:51	0-0	0-0	2-2	0	0	0	0	1	2	2	1	2	0	0	9
13	Hallie Birdsong		01:23	0-1	0-1	0-0	0	0	0	0	0	0	0	0	0	0	0	-3
22	Jade Peacock		03:18	0-0	0-0	0-0	1	0	1	0	0	0	0	0	0	0	0	-5
Team							2	0	2			0		0				
Totals				6-13	1-4	4-4	4	4	8	3	2	17	4	6	4	1	1	2

Shooting By Period		
4 th FG%	6-13	46.2%
3PT%	1-4	25.0%
FT%	4-4	100%
GM FG%	6-13	46.2%
3PT%	1-4	25.0%
FT%	4-4	100.0%

Dead Ball Rebounds: 0, 0

Technical Fouls::NONE

	SJSU	Hawaii
Biggest lead	0 (1 st 10:00)	29 (4 th 1:31)
Best Scoring Run	4(4 th 8:55)	11(4 th 1:31)
Lead Changes	0	
Times Tied	0	
Time with Lead	00:00	09:49

Points from	SJSU	Hawaii
Turnovers	7	9
Paint	10	8
Second Chance	4	2
Fast Breaks	0	6
Bench	6	4

	Period by Period Scoring				
	1st	2nd	3rd	4th	TOT
SJSU	4	13	15	15	47
Hawaii	18	22	16	17	73



San Jose St. at Hawaii

12/03/23 SimpliFi Arena at Stan Sheriff Center, Honolulu
2023-24 Women's Basketball

Officials: Esther Hsu, Josh Batin, Starr Rivera

San Jose St. - 30

NO.	Name	F	Min	FG			Rebounds			Fouls		TP	AS	TO	ST	Blocks		+/-
				M-A	M-A	M-A	OR	DR	TOT	PF	FD					BS	BA	
23	Alani Fluker	F	02:33	0-0	0-0	0-0	0	0	0	0	0	0	1	0	0	0	0	-8
24	Amhyia Moreland	F	10:54	5-8	1-1	2-3	3	0	3	1	2	13	1	2	0	1	0	1
0	Sydni Summers	G	08:08	1-3	1-2	0-0	0	0	0	1	0	3	1	0	0	0	0	-5
2	Sophia Jones	G	08:59	0-0	0-0	0-0	1	1	2	0	2	0	0	2	0	0	0	2
30	Sabrina Ma	G	15:18	0-4	0-2	1-2	1	1	2	2	3	1	0	1	0	0	0	-3
11	Marisa Davis-Jones		05:25	0-0	0-0	2-4	0	1	1	3	2	2	0	1	0	0	0	-4
44	Finau Tonga		02:17	0-0	0-0	0-0	0	0	0	1	0	0	0	0	0	0	0	-1
12	Jasmine Singleton		12:45	0-1	0-0	0-0	0	1	1	1	1	0	2	1	0	0	0	-1
3	Nailea Nicholas		15:08	1-2	0-0	0-0	0	1	1	0	1	2	4	4	1	0	0	-4
21	Sofia Kelemen		12:25	1-6	0-4	0-0	1	0	1	0	0	2	0	0	1	0	1	2
34	Semaj Smith		06:08	3-4	0-0	1-1	0	1	1	1	1	7	0	0	0	0	0	6
Team							1	2	3			0		0				
Totals				11-28	2-9	6-10	7	8	15	10	12	30	8	12	2	1	1	-3

Shooting By Period		
3 rd FG%	4-13	30.8%
3PT%	1-6	16.7%
FT%	6-9	66.7%
4 th FG%	7-15	46.7%
3PT%	1-3	33.3%
FT%	0-1	0%
GM FG%	11-28	39.3%
3PT%	2-9	22.2%
FT%	6-10	60.0%

Dead Ball Rebounds: 2, 0

Technical Fouls::NONE

Hawaii - 33

NO.	Name	F	Min	FG			Rebounds			Fouls		TP	AS	TO	ST	Blocks		+/-
				M-A	M-A	M-A	OR	DR	TOT	PF	FD					BS	BA	
12	Imani Perez	F	16:13	5-6	0-0	0-0	0	3	3	0	0	10	0	1	2	0	1	9
14	Brooklyn Rewers	C	15:45	2-8	0-1	0-0	1	2	3	3	0	4	0	2	2	0	0	7
3	Lily Wahinekapu	G	14:20	1-1	0-0	0-0	0	4	4	1	1	2	2	1	0	0	0	9
23	MeiLani McBee	G	10:30	1-1	1-1	0-0	0	1	1	1	1	3	1	0	0	1	0	11
45	Olivia Davies	G	06:41	0-0	0-0	4-5	0	0	0	1	2	4	1	0	1	0	0	2
15	Daejah Phillips		12:53	0-1	0-1	6-6	0	0	0	1	3	6	2	2	2	0	0	6
2	Ashley Thoms		05:07	0-0	0-0	0-0	0	0	0	1	1	0	0	0	0	0	0	-4
11	Vivienne Berrett		04:15	0-1	0-0	0-0	0	0	0	1	0	0	0	2	0	0	0	-4
1	Kelsie Imai		07:43	0-1	0-1	4-4	0	1	1	2	2	4	0	2	0	0	0	-9
22	Jade Peacock		05:10	0-1	0-1	0-0	1	0	1	1	0	0	0	0	0	0	0	-9
13	Hallie Birdsong		01:23	0-1	0-1	0-0	0	0	0	0	0	0	0	0	0	0	0	-3
Team							2	0	2			0		0				
Totals				9-21	1-6	14-15	4	11	15	12	10	33	6	10	7	1	1	3

Shooting By Period		
3 rd FG%	3-8	37.5%
3PT%	0-2	0.0%
FT%	10-11	90.9%
4 th FG%	6-13	46.2%
3PT%	1-4	25.0%
FT%	4-4	100%
GM FG%	9-21	42.9%
3PT%	1-6	16.7%
FT%	14-15	93.3%

Dead Ball Rebounds: 1, 1

Technical Fouls::NONE

	SJSU	Hawaii
Biggest lead	0 (1 st 10:00)	29 (3 rd 6:12)
Best Scoring Run	9(4 th 8:55)	11(4 th 1:31)
Lead Changes	0	
Times Tied	0	
Time with Lead	00:00	19:33

	SJSU	Hawaii
Points from		
Turnovers	10	13
Paint	16	14
Second Chance	7	2
Fast Breaks	1	9
Bench	13	10

	Period by Period Scoring				
	1st	2nd	3rd	4th	TOT
SJSU	4	13	15	15	47
Hawaii	18	22	16	17	73



San Jose St. at Hawaii

12/03/23 SimpliFi Arena at Stan Sheriff Center, Honolulu
2023-24 Women's Basketball

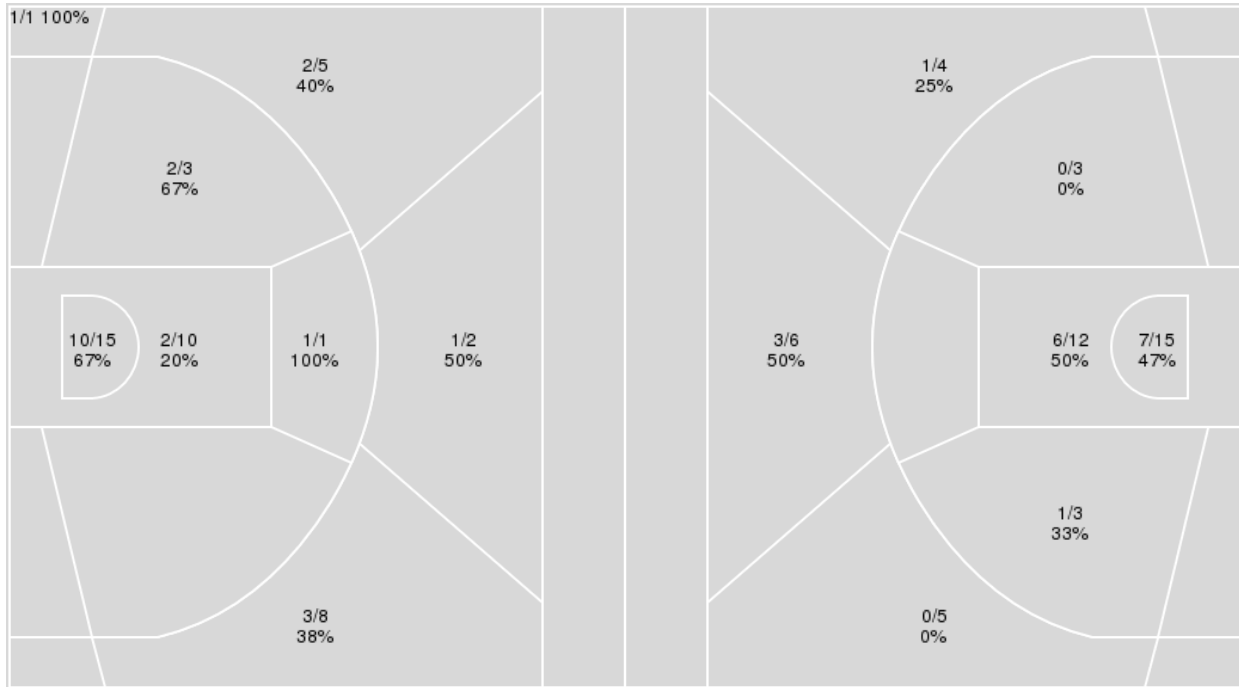
Officials: Esther Hsu, Josh Batin, Starr Rivera

{ Players => 0, 1, 2, 3, 4, 10, 11, 12, 13, 14, 15, 22, 23, 34, 45; } FG
Types => All; Results => All;

{ Players => All; } FG Types => All; Results => All;

Hawaii

San Jose St.



Hawaii	M/A	%
Field Goals	22/45	49
2 Points	15/29	52
3 Points	7/16	44
Free Throws	22/25	88

San Jose St.	M/A	%
Field Goals	18/48	38
2 Points	14/33	42
3 Points	4/15	27
Free Throws	7/12	58



San Jose St. at Hawaii

12/03/23 SimpliFi Arena at Stan Sheriff Center, Honolulu
2023-24 Women's Basketball

Officials: Esther Hsu, Josh Batin, Starr Rivera

San Jose St.

No	Name	Mins		Score		Points Diff		Points per Min		Assists		Rebounds		Steals		Turnovers	
		On	Off	On	Off	On	Off	On	Off	On	Off	On	Off	On	Off	On	Off
0	Sydni Summers	23:25	16:35	23 - 44	24 - 29	-21	-5	0.98	1.45	4	9	15	14	1	2	14	12
1	Aniyah Quow	01:06	38:54	0 - 3	47 - 70	-3	-23	0.00	1.21	0	13	1	28	0	3	1	25
2	Sophia Jones	14:49	25:11	20 - 27	27 - 46	-7	-19	1.35	1.07	8	5	11	18	1	2	11	15
3	Nailea Nicholas	28:11	11:49	32 - 52	15 - 21	-20	-6	1.14	1.27	11	2	20	9	3	0	20	6
11	Marisa Davis-Jones	16:07	23:53	15 - 28	32 - 45	-13	-13	0.93	1.34	3	10	11	18	1	2	10	16
12	Jasmine Singleton	26:56	13:04	34 - 47	13 - 26	-13	-13	1.26	0.99	9	4	21	8	3	0	16	10
21	Sofia Kelemeni	12:25	27:35	22 - 20	25 - 53	2	-28	1.77	0.91	7	6	13	16	2	1	6	20
23	Alani Fluker	11:51	28:09	8 - 30	39 - 43	-22	-4	0.68	1.39	3	10	6	23	0	3	10	16
24	Amhyia Moreland	15:33	24:27	18 - 28	29 - 45	-10	-16	1.16	1.19	5	8	8	21	3	0	11	15
30	Sabrina Ma	25:51	14:09	32 - 48	15 - 25	-16	-10	1.24	1.06	7	6	19	10	1	2	16	10
34	Semaj Smith	15:33	24:27	21 - 25	26 - 48	-4	-22	1.35	1.06	6	7	13	16	0	3	12	14
44	Finau Tonga	08:13	31:47	10 - 13	37 - 60	-3	-23	1.22	1.16	2	11	7	22	0	3	3	23

Hawaii

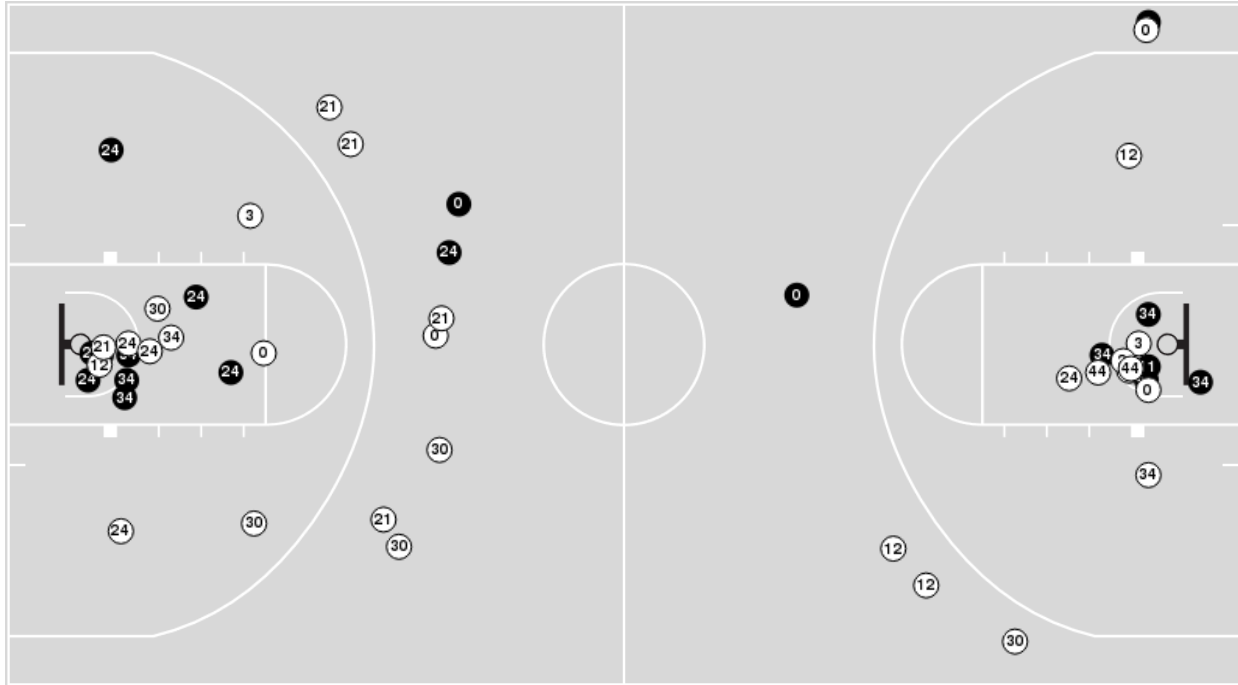
No	Name	Mins		Score		Points Diff		Points per Min		Assists		Rebounds		Steals		Turnovers	
		On	Off	On	Off	On	Off	On	Off	On	Off	On	Off	On	Off	On	Off
1	Kelsie Imai	16:45	23:15	19 - 27	54 - 20	-8	34	1.13	2.32	1	12	10	15	4	9	7	8
2	Ashley Thoms	06:20	33:40	6 - 10	67 - 37	-4	30	0.95	1.99	0	13	1	24	0	13	7	8
3	Lily Wahinekapu	28:51	11:09	66 - 28	7 - 19	38	-12	2.29	0.63	13	0	20	5	11	2	8	7
11	Vivienne Berrett	08:22	31:38	9 - 12	64 - 35	-3	29	1.08	2.02	0	13	4	21	3	10	4	11
12	Imani Perez	27:29	12:31	56 - 29	17 - 18	27	-1	2.04	1.36	11	2	17	8	10	3	11	4
13	Hallie Birdsong	01:23	38:37	0 - 3	73 - 44	-3	29	0.00	1.89	0	13	1	24	1	12	2	13
14	Brooklyn Rewers	31:38	08:22	64 - 35	9 - 12	29	-3	2.02	1.08	13	0	21	4	10	3	11	4
15	Daejah Phillips	27:49	12:11	53 - 35	20 - 12	18	8	1.91	1.64	9	4	18	7	10	3	9	6
22	Jade Peacock	11:32	28:28	13 - 18	60 - 29	-5	31	1.13	2.11	1	12	10	15	4	9	6	9
23	MeiLani McBee	25:33	14:27	50 - 24	23 - 23	26	0	1.96	1.59	12	1	14	11	8	5	6	9
45	Olivia Davies	14:18	25:42	29 - 14	44 - 33	15	11	2.03	1.71	5	8	9	16	4	9	4	11



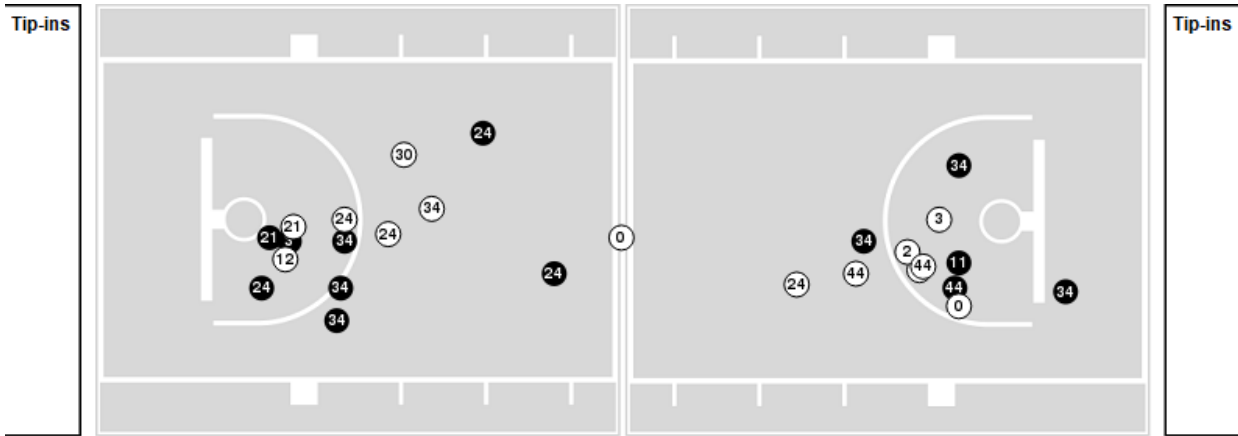
Players => AllFG Types=>AllResults=>All

San Jose St.

All Field Goals



Blow Up Chart



● Made ○ Missed N - Player Number

San Jose St.	M/A	%
Field Goals	18/48	38
2 Points	14/33	42
3 Points	4/15	27
Free Throws	7/12	58

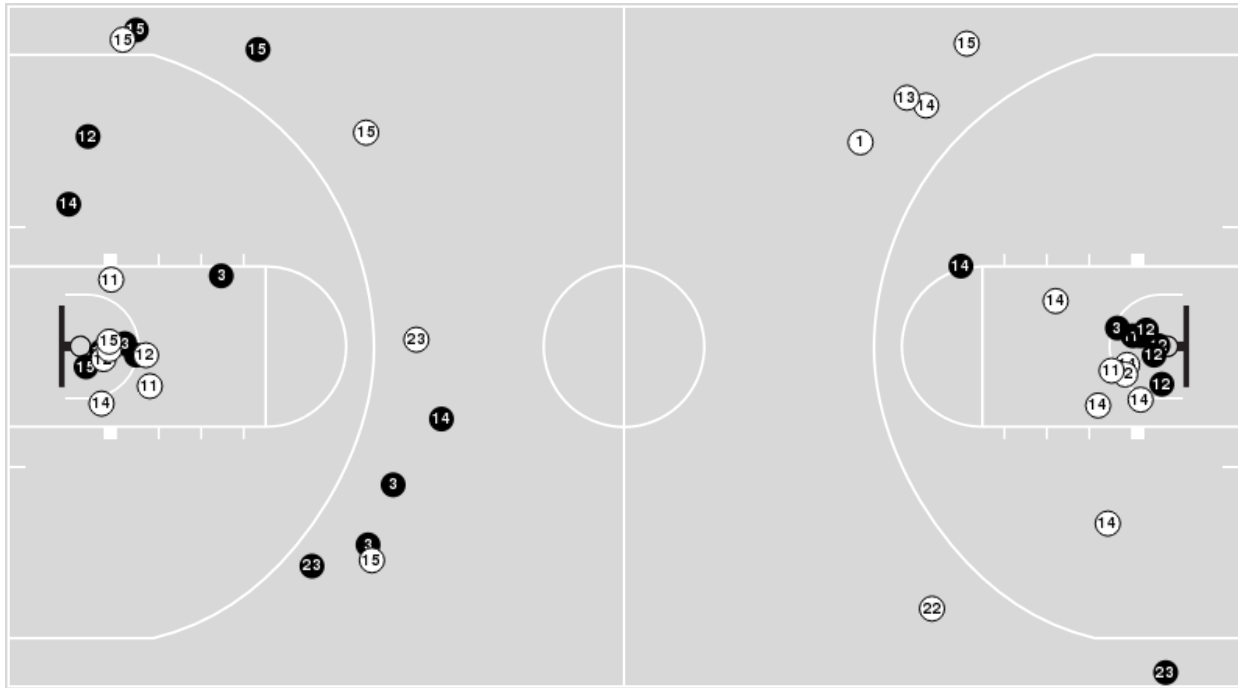
San Jose St.	M/A	%
Points in the Paint	26 (13 / 27)	48
Fast Break Points	1 (1/2)	50
Second Chance Points	8 (6/12)	50
Effective FG%	42	



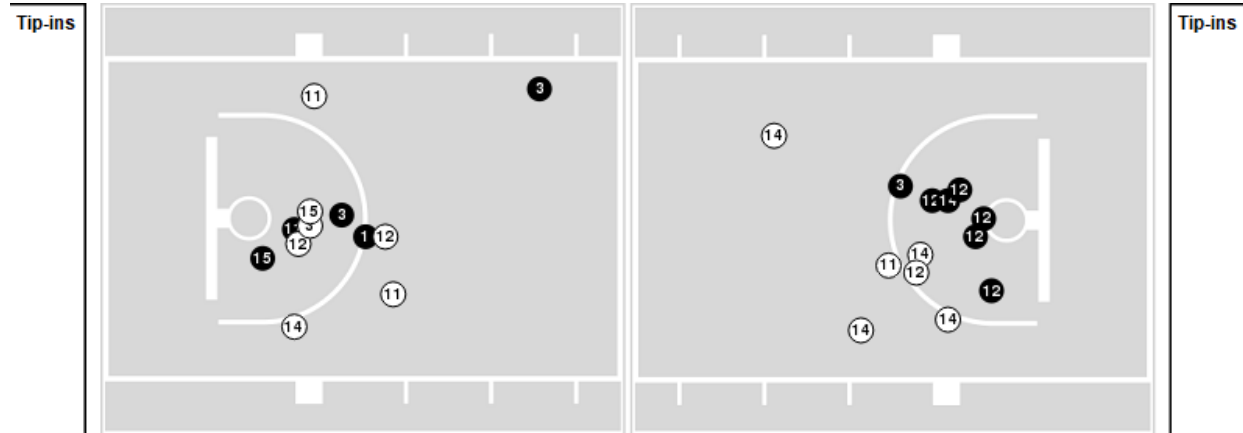
Players => 0, 1, 2, 3, 4, 10, 11, 12, 13, 14, 15, 22, 23, 34, 45FG Types=>AllResults=>All

Hawaii

All Field Goals



Blow Up Chart



● Made ○ Missed N - Player Number

Hawaii	M/A	%
Field Goals	22/45	49
2 Points	15/29	52
3 Points	7/16	44
Free Throws	22/25	88

Hawaii	M/A	%
Points in the Paint	24 (12 / 25)	48
Fast Break Points	14 (11/13)	85
Second Chance Points	2 (1/3)	33
Effective FG%	57	



San Jose St.

Lineup	Quarter On	Time On	Quarter Off	Time Off	Time on Court	Score	Score Diff	Reb	Stl	Tov	Ass	PPP
0- Summers S/ 2- Jones S/ 23- Fluker A/ 24- Moreland A/ 30- Ma S/	1	10:00	1	08:03	01:57	0-5	-5	0	0	1	0	0.0000
3- Nicholas N/ 11- Davis-Jones M/ 12- Singleton J/ 24- Moreland A/ 30- Ma S/	1	08:03	1	07:13	00:50	0-3	-3	0	0	0	0	0.0000
0- Summers S/ 3- Nicholas N/ 11- Davis-Jones M/ 12- Singleton J/ 34- Smith S/	1	07:13	1	04:55	02:18	0-4	-4	2	0	2	0	0.0000
0- Summers S/ 11- Davis-Jones M/ 12- Singleton J/ 30- Ma S/ 34- Smith S/	1	04:55	1	04:36	00:19	0-1	-1	0	0	1	0	0.0000
0- Summers S/ 11- Davis-Jones M/ 12- Singleton J/ 30- Ma S/ 44- Tonga F/	1	04:36	1	03:21	01:15	2-0	2	3	0	0	0	1.0000
0- Summers S/ 3- Nicholas N/ 11- Davis-Jones M/ 12- Singleton J/ 24- Moreland A/	1	03:21	1	02:19	01:02	0-3	-3	0	1	1	0	0.0000
0- Summers S/ 2- Jones S/ 3- Nicholas N/ 11- Davis-Jones M/ 24- Moreland A/	1	02:19	1	02:19	00:00	0-0	0	0	0	0	0	0.0000
2- Jones S/ 3- Nicholas N/ 11- Davis-Jones M/ 24- Moreland A/ 30- Ma S/	1	02:19	1	01:29	00:50	0-0	0	1	0	0	0	0.0000
2- Jones S/ 3- Nicholas N/ 11- Davis-Jones M/ 12- Singleton J/ 34- Smith S/	1	01:29	1	00:58	00:30	0-2	-2	1	0	1	0	0.0000
0- Summers S/ 3- Nicholas N/ 11- Davis-Jones M/ 12- Singleton J/ 34- Smith S/	1	00:58	2	09:41	01:17	2-0	2	1	0	1	0	1.0000
0- Summers S/ 11- Davis-Jones M/ 12- Singleton J/ 30- Ma S/ 44- Tonga F/	2	09:41	2	07:21	02:20	6-6	0	1	0	1	2	1.5000
0- Summers S/ 3- Nicholas N/ 11- Davis-Jones M/ 30- Ma S/ 44- Tonga F/	2	07:21	2	07:21	00:00	0-0	0	0	0	0	0	0.0000
0- Summers S/ 3- Nicholas N/ 23- Fluker A/ 30- Ma S/ 44- Tonga F/	2	07:21	2	06:06	01:15	0-0	0	1	0	1	0	0.0000
2- Jones S/ 3- Nicholas N/ 23- Fluker A/ 30- Ma S/ 34- Smith S/	2	06:06	2	05:37	00:29	0-2	-2	1	0	2	0	0.0000
2- Jones S/ 3- Nicholas N/ 12- Singleton J/ 23- Fluker A/ 34- Smith S/	2	05:37	2	03:33	02:04	4-4	0	1	0	1	2	1.3333
0- Summers S/ 3- Nicholas N/ 23- Fluker A/ 30- Ma S/ 44- Tonga F/	2	03:33	2	03:33	00:00	0-2	-2	0	0	0	0	0.0000
0- Summers S/ 1- Quow A/ 23- Fluker A/ 30- Ma S/ 44- Tonga F/	2	03:33	2	02:27	01:06	0-3	-3	1	0	1	0	0.0000
0- Summers S/ 3- Nicholas N/ 23- Fluker A/ 30- Ma S/ 44- Tonga F/	2	02:27	2	02:27	00:00	1-0	1	0	0	0	0	1.1364
0- Summers S/ 3- Nicholas N/ 23- Fluker A/ 30- Ma S/ 34- Smith S/	2	02:27	2	02:15	00:12	0-0	0	0	0	0	0	0.0000
0- Summers S/ 3- Nicholas N/ 12- Singleton J/ 23- Fluker A/ 34- Smith S/	2	02:15	3	10:00	02:15	2-5	-3	1	0	1	1	0.6667
0- Summers S/ 3- Nicholas N/ 11- Davis-Jones M/ 12- Singleton J/ 24- Moreland A/	3	10:00	3	09:06	00:54	2-0	2	0	0	0	1	2.0000
0- Summers S/ 3- Nicholas N/ 11- Davis-Jones M/ 12- Singleton J/ 23- Fluker A/	3	09:06	3	07:02	02:04	1-7	-6	1	0	2	0	0.3472
0- Summers S/ 2- Jones S/ 11- Davis-Jones M/ 30- Ma S/ 44- Tonga F/	3	07:02	3	07:00	00:02	0-0	0	0	0	0	0	0.0000
0- Summers S/ 11- Davis-Jones M/ 12- Singleton J/ 30- Ma S/ 44- Tonga F/	3	07:00	3	05:07	01:53	1-2	-1	1	0	0	0	0.2577
0- Summers S/ 11- Davis-Jones M/ 12- Singleton J/ 24- Moreland A/ 30- Ma S/	3	05:07	3	04:35	00:32	1-0	1	0	0	1	0	0.5319
0- Summers S/ 3- Nicholas N/ 12- Singleton J/ 24- Moreland A/ 30- Ma S/	3	04:35	3	04:17	00:18	0-2	-2	0	0	0	0	0.0000
0- Summers S/ 12- Singleton J/ 21- Kelemen S/ 24- Moreland A/ 30- Ma S/	3	04:17	3	03:20	00:57	2-0	2	1	0	0	0	1.0638
0- Summers S/ 12- Singleton J/ 21- Kelemen S/ 30- Ma S/ 34- Smith S/	3	03:20	3	01:52	01:28	3-4	-1	2	0	1	0	1.0000
2- Jones S/ 3- Nicholas N/ 21- Kelemen S/ 30- Ma S/ 34- Smith S/	3	01:52	4	10:00	01:52	5-1	4	2	0	0	2	1.1261
3- Nicholas N/ 12- Singleton J/ 21- Kelemen S/ 24- Moreland A/ 30- Ma S/	4	10:00	4	08:05	01:55	4-2	2	3	0	1	1	1.3333
3- Nicholas N/ 12- Singleton J/ 23- Fluker A/ 24- Moreland A/ 30- Ma S/	4	08:05	4	07:36	00:29	0-2	-2	0	0	1	0	0.0000
3- Nicholas N/ 12- Singleton J/ 21- Kelemen S/ 24- Moreland A/ 30- Ma S/	4	07:36	4	07:05	00:31	0-0	0	0	1	0	0	0.0000
2- Jones S/ 3- Nicholas N/ 12- Singleton J/ 21- Kelemen S/ 24- Moreland A/	4	07:05	4	05:21	01:44	4-0	4	3	1	1	2	1.3333
2- Jones S/ 3- Nicholas N/ 21- Kelemen S/ 30- Ma S/ 44- Tonga F/	4	05:21	4	04:59	00:22	0-0	0	0	0	0	0	0.0000
2- Jones S/ 3- Nicholas N/ 21- Kelemen S/ 30- Ma S/ 34- Smith S/	4	04:59	4	03:34	01:25	2-2	0	2	0	0	1	1.0000
2- Jones S/ 3- Nicholas N/ 21- Kelemen S/ 24- Moreland A/ 30- Ma S/	4	03:34	4	01:23	02:11	2-11	-9	0	0	3	1	0.3676
2- Jones S/ 3- Nicholas N/ 24- Moreland A/ 30- Ma S/ 34- Smith S/	4	01:23	4	00:00	01:23	3-0	3	0	0	2	0	1.0000



Officials: Esther Hsu, Josh Batin, Starr Rivera

Hawaii

Lineup	Quarter On	Time On	Quarter Off	Time Off	Time on Court	Score	Score Diff	Reb	Stl	Tov	Ass	PPP
3- Wahinekapu L/ 12- Perez I/ 14- Rewers B/ 23- McBee M/ 45- Davies O/	1	10:00	1	06:48	03:12	8-0	8	2	0	0	3	2.6667
3- Wahinekapu L/ 12- Perez I/ 14- Rewers B/ 15- Phillips D/ 23- McBee M/	1	06:48	1	04:55	01:53	4-0	4	1	1	0	0	1.0000
1- Imai K/ 11- Berrett V/ 12- Perez I/ 15- Phillips D/ 22- Peacock J/	1	04:55	1	03:21	01:34	1-2	-1	1	1	0	0	0.5319
3- Wahinekapu L/ 12- Perez I/ 14- Rewers B/ 22- Peacock J/ 45- Davies O/	1	03:21	1	02:19	01:02	3-0	3	1	0	2	0	1.0000
3- Wahinekapu L/ 14- Rewers B/ 22- Peacock J/ 23- McBee M/ 45- Davies O/	1	02:19	1	01:29	00:50	0-0	0	2	0	0	0	0.0000
3- Wahinekapu L/ 14- Rewers B/ 15- Phillips D/ 22- Peacock J/ 23- McBee M/	1	01:29	1	00:25	01:03	2-2	0	0	1	0	1	1.0000
1- Imai K/ 2- Thoms A/ 14- Rewers B/ 15- Phillips D/ 23- McBee M/	1	00:25	2	09:12	01:13	0-0	0	0	0	2	0	0.0000
1- Imai K/ 12- Perez I/ 14- Rewers B/ 15- Phillips D/ 23- McBee M/	2	09:12	2	08:34	00:38	0-3	-3	1	0	0	0	0.0000
3- Wahinekapu L/ 12- Perez I/ 14- Rewers B/ 15- Phillips D/ 23- McBee M/	2	08:34	2	06:06	02:28	6-3	3	0	1	0	2	2.0000
3- Wahinekapu L/ 11- Berrett V/ 12- Perez I/ 15- Phillips D/ 45- Davies O/	2	06:06	2	05:37	00:29	4-0	4	0	1	0	0	1.4493
1- Imai K/ 11- Berrett V/ 15- Phillips D/ 23- McBee M/ 45- Davies O/	2	05:37	2	03:33	02:04	2-4	-2	1	0	0	0	1.0000
1- Imai K/ 3- Wahinekapu L/ 14- Rewers B/ 15- Phillips D/ 23- McBee M/	2	03:33	2	01:52	01:41	6-1	5	0	1	0	1	2.1739
1- Imai K/ 3- Wahinekapu L/ 14- Rewers B/ 15- Phillips D/ 22- Peacock J/	2	01:52	3	10:00	01:52	4-2	2	1	0	1	0	1.3333
3- Wahinekapu L/ 12- Perez I/ 14- Rewers B/ 23- McBee M/ 45- Davies O/	3	10:00	3	07:02	02:58	7-3	4	1	2	0	1	1.6204
3- Wahinekapu L/ 12- Perez I/ 14- Rewers B/ 15- Phillips D/ 23- McBee M/	3	07:02	3	06:12	00:50	0-0	0	1	0	0	0	0.0000
2- Thoms A/ 3- Wahinekapu L/ 12- Perez I/ 14- Rewers B/ 15- Phillips D/	3	06:12	3	06:12	00:00	2-0	2	0	0	0	0	2.2727
2- Thoms A/ 3- Wahinekapu L/ 11- Berrett V/ 12- Perez I/ 15- Phillips D/	3	06:12	3	05:40	00:32	0-1	-1	0	0	1	0	0.0000
1- Imai K/ 2- Thoms A/ 11- Berrett V/ 12- Perez I/ 15- Phillips D/	3	05:40	3	05:07	00:33	0-0	0	0	0	0	0	0.0000
1- Imai K/ 2- Thoms A/ 12- Perez I/ 14- Rewers B/ 15- Phillips D/	3	05:07	3	04:09	00:58	2-1	1	1	0	1	0	1.0638
2- Thoms A/ 3- Wahinekapu L/ 12- Perez I/ 14- Rewers B/ 15- Phillips D/	3	04:09	3	03:51	00:18	0-2	-2	0	0	1	0	0.0000
3- Wahinekapu L/ 12- Perez I/ 14- Rewers B/ 15- Phillips D/ 45- Davies O/	3	03:51	3	01:52	01:59	4-3	1	2	1	0	1	1.3889
3- Wahinekapu L/ 14- Rewers B/ 15- Phillips D/ 22- Peacock J/ 45- Davies O/	3	01:52	3	01:52	00:00	1-0	1	0	0	0	0	1.1364
1- Imai K/ 3- Wahinekapu L/ 14- Rewers B/ 15- Phillips D/ 22- Peacock J/	3	01:52	4	08:05	03:47	2-9	-7	4	1	1	0	0.4000
3- Wahinekapu L/ 12- Perez I/ 14- Rewers B/ 15- Phillips D/ 23- McBee M/	4	08:05	4	07:05	01:00	2-0	2	2	0	1	1	1.0000
2- Thoms A/ 12- Perez I/ 14- Rewers B/ 23- McBee M/ 45- Davies O/	4	07:05	4	05:21	01:44	0-4	-4	0	0	2	0	0.0000
1- Imai K/ 2- Thoms A/ 11- Berrett V/ 12- Perez I/ 23- McBee M/	4	05:21	4	04:19	01:02	2-2	0	0	0	0	0	1.0638
3- Wahinekapu L/ 11- Berrett V/ 12- Perez I/ 15- Phillips D/ 23- McBee M/	4	04:19	4	03:34	00:45	0-0	0	1	0	1	0	0.0000
3- Wahinekapu L/ 12- Perez I/ 14- Rewers B/ 15- Phillips D/ 23- McBee M/	4	03:34	4	01:23	02:11	11-2	9	2	2	0	3	2.2541
1- Imai K/ 11- Berrett V/ 12- Perez I/ 13- Birdsong H/ 22- Peacock J/	4	01:23	4	00:00	01:23	0-3	-3	1	1	2	0	0.0000



San Jose St. at Hawaii

12/03/23 SimpliFi Arena at Stan Sheriff Center, Honolulu
2023-24 Women's Basketball

Officials: Esther Hsu, Josh Batin, Starr Rivera

San Jose St.

Lineup	Time	Score	Score Diff	Pts/Min	Reb	Stl	Tov	Ass	PPP
0- Summers S/ 11- Davis-Jones M/ 12- Singleton J/ 30- Ma S/ 44- Tonga F/	05:28	9-8	1	1.6463	5	0	1	2	0.9109
0- Summers S/ 3- Nicholas N/ 11- Davis-Jones M/ 12- Singleton J/ 34- Smith S/	03:35	2-4	-2	0.5563	3	0	3	0	0.3333
2- Jones S/ 3- Nicholas N/ 21- Kelemen S/ 30- Ma S/ 34- Smith S/	03:17	7-3	4	2.1320	4	0	0	3	1.0870
3- Nicholas N/ 12- Singleton J/ 21- Kelemen S/ 24- Moreland A/ 30- Ma S/	02:26	4-2	2	1.6438	3	1	1	1	1.0000
0- Summers S/ 3- Nicholas N/ 12- Singleton J/ 23- Fluker A/ 34- Smith S/	02:15	2-5	-3	0.8889	1	0	1	1	0.6667
2- Jones S/ 3- Nicholas N/ 21- Kelemen S/ 24- Moreland A/ 30- Ma S/	02:11	2-11	-9	0.9160	0	0	3	1	0.3676
2- Jones S/ 3- Nicholas N/ 12- Singleton J/ 23- Fluker A/ 34- Smith S/	02:04	4-4	0	1.9355	1	0	1	2	1.3333
0- Summers S/ 3- Nicholas N/ 11- Davis-Jones M/ 12- Singleton J/ 23- Fluker A/	02:04	1-7	-6	0.4839	1	0	2	0	0.3472
0- Summers S/ 2- Jones S/ 23- Fluker A/ 24- Moreland A/ 30- Ma S/	01:57	0-5	-5	0.0000	0	0	1	0	0.0000
0- Summers S/ 3- Nicholas N/ 11- Davis-Jones M/ 12- Singleton J/ 24- Moreland A/	01:56	2-3	-1	1.0345	0	1	1	1	0.6667
2- Jones S/ 3- Nicholas N/ 12- Singleton J/ 21- Kelemen S/ 24- Moreland A/	01:44	4-0	4	2.3077	3	1	1	2	1.3333
0- Summers S/ 12- Singleton J/ 21- Kelemen S/ 30- Ma S/ 34- Smith S/	01:28	3-4	-1	2.0455	2	0	1	0	1.0000
2- Jones S/ 3- Nicholas N/ 24- Moreland A/ 30- Ma S/ 34- Smith S/	01:23	3-0	3	2.1687	0	0	2	0	1.0000
0- Summers S/ 3- Nicholas N/ 23- Fluker A/ 30- Ma S/ 44- Tonga F/	01:15	1-2	-1	0.8000	1	0	1	0	0.5319
0- Summers S/ 1- Quow A/ 23- Fluker A/ 30- Ma S/ 44- Tonga F/	01:06	0-3	-3	0.0000	1	0	1	0	0.0000
0- Summers S/ 12- Singleton J/ 21- Kelemen S/ 24- Moreland A/ 30- Ma S/	00:57	2-0	2	2.1053	1	0	0	0	1.0638
3- Nicholas N/ 11- Davis-Jones M/ 12- Singleton J/ 24- Moreland A/ 30- Ma S/	00:50	0-3	-3	0.0000	0	0	0	0	0.0000
2- Jones S/ 3- Nicholas N/ 11- Davis-Jones M/ 24- Moreland A/ 30- Ma S/	00:50	0-0	0	0.0000	1	0	0	0	0.0000
0- Summers S/ 11- Davis-Jones M/ 12- Singleton J/ 24- Moreland A/ 30- Ma S/	00:32	1-0	1	1.8750	0	0	1	0	0.5319
2- Jones S/ 3- Nicholas N/ 11- Davis-Jones M/ 12- Singleton J/ 34- Smith S/	00:30	0-2	-2	0.0000	1	0	1	0	0.0000
2- Jones S/ 3- Nicholas N/ 23- Fluker A/ 30- Ma S/ 34- Smith S/	00:29	0-2	-2	0.0000	1	0	2	0	0.0000
3- Nicholas N/ 12- Singleton J/ 23- Fluker A/ 24- Moreland A/ 30- Ma S/	00:29	0-2	-2	0.0000	0	0	1	0	0.0000
2- Jones S/ 3- Nicholas N/ 21- Kelemen S/ 30- Ma S/ 44- Tonga F/	00:22	0-0	0	0.0000	0	0	0	0	0.0000
0- Summers S/ 11- Davis-Jones M/ 12- Singleton J/ 30- Ma S/ 34- Smith S/	00:19	0-1	-1	0.0000	0	0	1	0	0.0000
0- Summers S/ 3- Nicholas N/ 12- Singleton J/ 24- Moreland A/ 30- Ma S/	00:18	0-2	-2	0.0000	0	0	0	0	0.0000
0- Summers S/ 3- Nicholas N/ 23- Fluker A/ 30- Ma S/ 34- Smith S/	00:12	0-0	0	0.0000	0	0	0	0	0.0000
0- Summers S/ 2- Jones S/ 11- Davis-Jones M/ 30- Ma S/ 44- Tonga F/	00:02	0-0	0	0.0000	0	0	0	0	0.0000
0- Summers S/ 2- Jones S/ 3- Nicholas N/ 11- Davis-Jones M/ 24- Moreland A/	00:00	0-0	0	NaN	0	0	0	0	0.0000
0- Summers S/ 3- Nicholas N/ 11- Davis-Jones M/ 30- Ma S/ 44- Tonga F/	00:00	0-0	0	NaN	0	0	0	0	0.0000



San Jose St. at Hawaii

12/03/23 SimpliFi Arena at Stan Sheriff Center, Honolulu
2023-24 Women's Basketball

Officials: Esther Hsu, Josh Batin, Starr Rivera

Hawaii

Lineup	Time	Score	Score Diff	Pts/Min	Reb	Stl	Tov	Ass	PPP
3- Wahinekapu L/ 12- Perez I/ 14- Rewers B/ 15- Phillips D/ 23- McBee M/	08:22	23-5	18	2.7490	6	4	1	6	1.5457
3- Wahinekapu L/ 12- Perez I/ 14- Rewers B/ 23- McBee M/ 45- Davies O/	06:10	15-3	12	2.4324	3	2	0	4	2.0492
1- Imai K/ 3- Wahinekapu L/ 14- Rewers B/ 15- Phillips D/ 22- Peacock J/	05:39	6-11	-5	1.0619	5	1	2	0	0.7500
1- Imai K/ 11- Berrett V/ 15- Phillips D/ 23- McBee M/ 45- Davies O/	02:04	2-4	-2	0.9677	1	0	0	0	1.0000
3- Wahinekapu L/ 12- Perez I/ 14- Rewers B/ 15- Phillips D/ 45- Davies O/	01:59	4-3	1	2.0168	2	1	0	1	1.3889
2- Thoms A/ 12- Perez I/ 14- Rewers B/ 23- McBee M/ 45- Davies O/	01:44	0-4	-4	0.0000	0	0	2	0	0.0000
1- Imai K/ 3- Wahinekapu L/ 14- Rewers B/ 15- Phillips D/ 23- McBee M/	01:41	6-1	5	3.5644	0	1	0	1	2.1739
1- Imai K/ 11- Berrett V/ 12- Perez I/ 15- Phillips D/ 22- Peacock J/	01:34	1-2	-1	0.6383	1	1	0	0	0.5319
1- Imai K/ 11- Berrett V/ 12- Perez I/ 13- Birdsong H/ 22- Peacock J/	01:23	0-3	-3	0.0000	1	1	2	0	0.0000
1- Imai K/ 2- Thoms A/ 14- Rewers B/ 15- Phillips D/ 23- McBee M/	01:13	0-0	0	0.0000	0	0	2	0	0.0000
3- Wahinekapu L/ 14- Rewers B/ 15- Phillips D/ 22- Peacock J/ 23- McBee M/	01:03	2-2	0	1.8779	0	1	0	1	1.0000
3- Wahinekapu L/ 12- Perez I/ 14- Rewers B/ 22- Peacock J/ 45- Davies O/	01:02	3-0	3	2.9032	1	0	2	0	1.0000
1- Imai K/ 2- Thoms A/ 11- Berrett V/ 12- Perez I/ 23- McBee M/	01:02	2-2	0	1.9355	0	0	0	0	1.0638
1- Imai K/ 2- Thoms A/ 12- Perez I/ 14- Rewers B/ 15- Phillips D/	00:58	2-1	1	2.0690	1	0	1	0	1.0638
3- Wahinekapu L/ 14- Rewers B/ 22- Peacock J/ 23- McBee M/ 45- Davies O/	00:50	0-0	0	0.0000	2	0	0	0	0.0000
3- Wahinekapu L/ 11- Berrett V/ 12- Perez I/ 15- Phillips D/ 23- McBee M/	00:45	0-0	0	0.0000	1	0	1	0	0.0000
1- Imai K/ 12- Perez I/ 14- Rewers B/ 15- Phillips D/ 23- McBee M/	00:38	0-3	-3	0.0000	1	0	0	0	0.0000
1- Imai K/ 2- Thoms A/ 11- Berrett V/ 12- Perez I/ 15- Phillips D/	00:33	0-0	0	0.0000	0	0	0	0	0.0000
2- Thoms A/ 3- Wahinekapu L/ 11- Berrett V/ 12- Perez I/ 15- Phillips D/	00:32	0-1	-1	0.0000	0	0	1	0	0.0000
3- Wahinekapu L/ 11- Berrett V/ 12- Perez I/ 15- Phillips D/ 45- Davies O/	00:29	4-0	4	8.2759	0	1	0	0	1.4493
2- Thoms A/ 3- Wahinekapu L/ 12- Perez I/ 14- Rewers B/ 15- Phillips D/	00:18	2-2	0	6.6667	0	0	1	0	1.0638
3- Wahinekapu L/ 14- Rewers B/ 15- Phillips D/ 22- Peacock J/ 45- Davies O/	00:00	1-0	1	∞	0	0	0	0	1.1364