



Officials: Michol Murray, Anita Ortega, Kenneth Nash

New Mexico - 65

Record: 16-6 (7-2)

NO.	Name	F	Min	FG	3P	FT	Rebounds			Fouls		TP	AS	TO	ST	Blocks		+/-
				M-A	M-A	M-A	OR	DR	TOT	PF	FD					BS	BA	
30	Paula Reus	F	32:02	3-7	2-5	1-2	1	4	5	2	1	9	2	2	2	0	0	11
22	Charlotte Kohl	C	25:38	0-3	0-1	1-2	2	5	7	3	4	1	0	1	1	1	0	7
3	Nyah Wilson	G	24:60	5-14	1-5	3-4	1	4	5	2	2	14	2	1	0	0	2	16
12	Aniyah Augmon	G	34:55	5-14	1-4	2-3	0	3	3	0	6	13	6	6	1	0	1	19
33	Vianè Cumber	G	32:04	4-7	2-4	3-3	0	8	8	1	2	13	1	0	1	0	0	9
5	Lara Langermann		25:17	4-5	3-4	2-2	0	1	1	2	1	13	0	1	1	0	0	1
14	Hulda Joaquim		14:22	1-1	0-0	0-0	0	1	1	2	0	2	0	1	0	0	0	4
15	Jaelyn Bates		02:05	0-0	0-0	0-0	0	0	0	0	0	0	0	1	0	0	0	-6
10	Paris Lauro		07:58	0-1	0-1	0-0	0	2	2	0	0	0	0	0	0	1	0	0
21	Mackenzie Curtis		00:41	0-0	0-0	0-0	0	0	0	0	0	0	0	1	0	0	0	-6
Team							0	1	1			0		0				
Totals				22-52	9-24	12-16	4	29	33	12	16	65	11	14	6	2	3	11

Technical Fouls::NONE

Shooting By Period		
1 st FG%	7-14	50.0%
3PT%	3-8	37.5%
FT%	1-1	100%
2 nd FG%	5-13	38.5%
3PT%	2-5	40.0%
FT%	2-3	66.7%
3 rd FG%	5-11	45.5%
3PT%	2-3	66.7%
FT%	6-8	75%
4 th FG%	5-14	35.7%
3PT%	2-8	25.0%
FT%	3-4	75%
GM FG%	22-52	42.3%
3PT%	9-24	37.5%
FT%	12-16	75.0%

Dead Ball Rebounds: 2, 0

San Jose St. - 54

Record: 6-14 (1-7)

NO.	Name	F	Min	FG	3P	FT	Rebounds			Fouls		TP	AS	TO	ST	Blocks		+/-
				M-A	M-A	M-A	OR	DR	TOT	PF	FD					BS	BA	
11	Marisa Davis-Jones	F	38:30	4-14	0-2	1-2	4	6	10	3	5	9	1	2	2	0	0	-6
15	Maya Anderson	F	32:51	3-11	0-5	2-2	3	2	5	0	1	8	4	4	0	1	1	-15
24	Amhyia Moreland	F	13:33	3-8	0-0	2-5	0	1	1	3	3	8	1	2	1	2	0	-1
0	Sydni Summers	G	27:50	2-5	2-3	0-0	0	3	3	2	1	6	3	2	1	0	0	-17
21	Sofia Kelemeni	G	33:20	2-6	2-4	0-0	1	4	5	3	0	6	4	2	0	0	1	-6
31	Mia Grizelj		07:38	0-1	0-0	0-0	0	1	1	0	0	0	0	0	0	0	0	-2
30	Sabrina Ma		29:53	3-7	3-7	0-0	2	5	7	4	1	9	0	0	2	0	0	3
34	Semaj Smith		16:25	3-7	0-0	2-2	1	3	4	1	1	8	0	3	1	0	0	-11
Team							2	3	5			0		1				
Totals				20-59	7-21	7-11	13	28	41	16	12	54	13	16	7	3	2	-11

Technical Fouls::NONE

Shooting By Period		
1 st FG%	5-16	31.3%
3PT%	1-5	20.0%
FT%	1-2	50%
2 nd FG%	5-14	35.7%
3PT%	4-7	57.1%
FT%	2-2	100%
3 rd FG%	5-12	41.7%
3PT%	0-1	0.0%
FT%	4-6	66.7%
4 th FG%	5-17	29.4%
3PT%	2-8	25.0%
FT%	0-1	0%
GM FG%	20-59	33.9%
3PT%	7-21	33.3%
FT%	7-11	63.6%

Dead Ball Rebounds: 1, 0

	UNM	SJS
Biggest lead	17 (4 th 2:13)	2 (1 st 7:46)
Best Scoring Run	11 (1 st 2:03)	6 (2 nd 2:56)
Lead Changes	4	
Times Tied	0	
Time with Lead	38:31	01:05

	UNM	SJS
Points from		
Turnovers	11	8
Paint	22	26
Second Chance	0	9
Fast Breaks	4	0
Bench	15	17

	Period by Period Scoring				
	1st	2nd	3rd	4th	TOT
UNM	18	14	18	15	65
SJS	12	16	14	12	54



Period 1

Quarter Starters:

SJS	0 Summers S	11 Davis-Jones M	15 Anderson M	21 Kelemeni S	24 Moreland A
UNM	3 Wilson N	12 Augmon A	22 Kohl C	30 Reus P	33 Cumber V

Game Time	SJS	Score	Diff	UNM
10:00	24 MORELAND A jumpball lost			22 KOHL C jumpball won
09:36		0-2	-2	12 AUGMON A 2pt FG in the paint, jump shot made (2)
09:25	11 DAVIS-JONES M foul drawn (1)			33 CUMBER V foul shooting (1 - 1)
09:25	11 DAVIS-JONES M free throw 1 - 2 made (1)	1-2	-1	
09:25	11 DAVIS-JONES M free throw 2 - 2 missed			
09:23				33 CUMBER V defensive rebound (1)
09:08		1-4	-3	12 AUGMON A 2pt FG in the paint, hook shot made (4)
08:54	15 ANDERSON M 2pt FG in the paint, layup made (2)	3-4	-1	
08:36				3 WILSON N 3pt FG , jump shot missed
08:33				22 KOHL C offensive rebound (1)
08:33	24 MORELAND A foul personal (1 - 1)			22 KOHL C foul drawn (1)
08:26				3 WILSON N 2pt FG second chance outside the paint, jump shot missed
08:24	defensive rebound (1)			
08:08	11 DAVIS-JONES M 2pt FG outside the paint, jump shot missed			
08:03	11 DAVIS-JONES M offensive rebound (1)			
08:02	11 DAVIS-JONES M 2pt FG second chance in the paint, layup missed			
07:59				3 WILSON N defensive rebound (1)
07:56	0 SUMMERS S foul drawn (1)			3 WILSON N foul offensive (1 - 2)
07:56				3 WILSON N turnover offensive (1)
07:46	21 KELEMENI S 3pt FG from turnover, jump shot made (3)	6-4	2	
07:46	15 ANDERSON M assist (1)			
07:22	24 MORELAND A steal (1)			30 REUS P turnover lost ball (1)
07:00	24 MORELAND A 2pt FG from turnover outside the paint, jump shot missed			
06:57				12 AUGMON A defensive rebound (1)
06:50		6-7	-1	3 WILSON N 3pt FG , jump shot made (3)
06:50				12 AUGMON A assist (1)
06:29	24 MORELAND A 2pt FG in the paint, layup made (2)	8-7	1	
06:20		8-9	-1	12 AUGMON A 2pt FG in the paint, layup made (6)
06:20	0 SUMMERS S foul shooting (1 - 2)			12 AUGMON A foul drawn (1)
06:20		8-10	-2	12 AUGMON A free throw 1 - 1 made (7)
06:10	11 DAVIS-JONES M 2pt FG in the paint, layup missed			
06:05				22 KOHL C defensive rebound (2)
05:55				30 REUS P 2pt FG in the paint, jump shot missed
05:51	21 KELEMENI S defensive rebound (1)			
05:39	24 MORELAND A 2pt FG in the paint, jump shot missed			
05:35				30 REUS P defensive rebound (1)
05:33				30 REUS P 3pt FG , jump shot missed
05:29	11 DAVIS-JONES M defensive rebound (2)			
05:29	jump ball situation			
05:29	24 MORELAND A substitution out			
05:29	31 GRIZELJ M substitution in			



Officials: Michol Murray, Anita Ortega, Kenneth Nash

Game Time	SJS	Score	Diff	UNM
05:29				3 WILSON N substitution out
05:29				22 KOHL C substitution out
05:29				5 LANGERMANN L substitution in
05:29				14 JOAQUIM H substitution in
05:00	21 KELEMENI S turnover lost ball (1)			33 CUMBER V steal (1)
04:50		8-12	-4	5 LANGERMANN L 2pt FG from turnover in the paint, layup made (2)
04:32	15 ANDERSON M 2pt FG in the paint, layup missed			
04:29				14 JOAQUIM H defensive rebound (1)
04:19				12 AUGMON A 3pt FG , jump shot missed
04:12	11 DAVIS-JONES M defensive rebound (3)			
03:53	Timeout media			
03:53	0 SUMMERS S substitution out			
03:53	30 MA S substitution in			
03:46	turnover shot clock (2)			
03:38				33 CUMBER V 3pt FG from turnover, jump shot missed
03:33	21 KELEMENI S defensive rebound (2)			
03:24	11 DAVIS-JONES M 3pt FG , jump shot missed			
03:19				33 CUMBER V defensive rebound (2)
03:10		8-15	-7	5 LANGERMANN L 3pt FG , jump shot made (5)
03:10				12 AUGMON A assist (2)
03:05	Timeout 30 Sec			
03:05	30 MA S substitution out			
03:05	24 MORELAND A substitution in			
03:05				33 CUMBER V substitution out
03:05				3 WILSON N substitution in
02:36	31 GRIZELJ M substitution out			
02:36	30 MA S substitution in			
02:32	30 MA S 3pt FG , jump shot missed			
02:32	30 MA S offensive rebound (1)			
02:32	15 ANDERSON M 3pt FG second chance, jump shot missed			
02:32				12 AUGMON A defensive rebound (2)
02:32				12 AUGMON A turnover bad pass (1)
02:20	24 MORELAND A foul offensive (2 - 3)			12 AUGMON A foul drawn (2)
02:20	24 MORELAND A turnover offensive (1)			
02:12	15 ANDERSON M substitution out			
02:12	0 SUMMERS S substitution in			
02:03		8-18	-10	12 AUGMON A 3pt FG from turnover, jump shot made (10)
01:46	30 MA S foul drawn (1)			3 WILSON N foul personal (2 - 3)
01:46	24 MORELAND A substitution out			
01:46	34 SMITH S substitution in			
01:46				3 WILSON N substitution out
01:46				33 CUMBER V substitution in
01:41	34 SMITH S 2pt FG in the paint, layup made (2)	10-18	-8	
01:41	0 SUMMERS S assist (1)			
01:20				12 AUGMON A 3pt FG , jump shot missed
01:16	34 SMITH S defensive rebound (1)			
01:09	0 SUMMERS S 3pt FG , jump shot missed			
01:04				30 REUS P defensive rebound (2)



Officials: Michol Murray, Anita Ortega, Kenneth Nash

Game Time	SJS	Score	Diff	UNM
00:57	30 MA S steal (1)			5 LANGERMANN L turnover bad pass (1)
00:39	21 KELEMENI S 2pt FG from turnover in the paint, layup missed			
00:35	34 SMITH S offensive rebound (2)			
00:33	34 SMITH S 2pt FG from turnover second chance in the paint, layup made (4)	12-18	-6	
00:09	11 DAVIS-JONES M steal (1)			14 JOAQUIM H turnover lost ball (1)
00:09	11 DAVIS-JONES M foul drawn (2)			14 JOAQUIM H foul personal (1 - 4)
00:09	21 KELEMENI S substitution out			
00:09	15 ANDERSON M substitution in			
00:09				14 JOAQUIM H substitution out
00:09				22 KOHL C substitution in
END OF PERIOD				
SJS 12-18 UNM				



Officials: Michol Murray, Anita Ortega, Kenneth Nash

New Mexico - 18

NO.	Name	F/C	Min	FG			Rebounds			Fouls		TP	AS	TO	ST	Blocks		+/-
				M-A	3P	FT	OR	DR	TOT	PF	FD					BS	BA	
30	Paula Reus	F	10:00	0-2	0-1	0-0	0	2	2	0	0	0	0	1	0	0	0	6
22	Charlotte Kohl	C	04:41	0-0	0-0	0-0	1	1	2	0	1	0	0	0	0	0	0	2
3	Nyah Wilson	G	05:50	1-3	1-2	0-0	0	1	1	2	0	3	0	1	0	0	0	5
12	Aniyah Augmon	G	10:00	4-6	1-3	1-1	0	2	2	0	2	10	2	1	0	0	0	6
33	Vianè Cumber	G	08:41	0-1	0-1	0-0	0	2	2	1	0	0	0	0	1	0	0	3
5	Lara Langermann		05:29	2-2	1-1	0-0	0	0	0	0	0	5	0	1	0	0	0	4
14	Hulda Joaquin		05:19	0-0	0-0	0-0	0	1	1	1	0	0	0	1	0	0	0	4
Team							0	0	0				0					
Totals				7-14	3-8	1-1	1	9	10	4	3	18	2	5	1	0	0	6

Shooting By Period		
1st FG%	7-14	50.0%
3PT%	3-8	37.5%
FT%	1-1	100%
GM FG%	7-14	50.0%
3PT%	3-8	37.5%
FT%	1-1	100.0%

Dead Ball Rebounds: 0, 0

Technical Fouls::NONE

San Jose St. - 12

NO.	Name	F/C	Min	FG			Rebounds			Fouls		TP	AS	TO	ST	Blocks		+/-
				M-A	3P	FT	OR	DR	TOT	PF	FD					BS	BA	
11	Marisa Davis-Jones	F	10:00	0-4	0-1	1-2	1	2	3	0	2	1	0	0	1	0	0	-6
15	Maya Anderson	F	07:58	1-3	0-1	0-0	0	0	0	0	0	2	1	0	0	0	0	-7
24	Amhyia Moreland	F	05:50	1-3	0-0	0-0	0	0	0	2	0	2	0	1	1	0	0	-5
0	Sydni Summers	G	08:19	0-1	0-1	0-0	0	0	0	1	1	0	1	0	0	0	0	-3
21	Sofia Kelemeni	G	09:50	1-2	1-1	0-0	0	2	2	0	0	3	0	1	0	0	0	-6
31	Mia Grizelj		02:53	0-0	0-0	0-0	0	0	0	0	0	0	0	0	0	0	0	-5
30	Sabrina Ma		03:24	0-1	0-1	0-0	1	0	1	0	1	0	0	0	1	0	0	-2
34	Semaj Smith		01:46	2-2	0-0	0-0	1	1	2	0	0	4	0	0	0	0	0	4
Team							0	1	1				1					
Totals				5-16	1-5	1-2	3	6	9	3	4	12	2	3	3	0	0	-6

Shooting By Period		
1st FG%	5-16	31.3%
3PT%	1-5	20.0%
FT%	1-2	50%
GM FG%	5-16	31.3%
3PT%	1-5	20.0%
FT%	1-2	50.0%

Dead Ball Rebounds: 0, 0

Technical Fouls::NONE

	UNM	SJS
Biggest lead	10 (1 st 2:03)	2 (1 st 7:46)
Best Scoring Run	11 (1 st 2:03)	5 (1 st 7:46)
Lead Changes	4	
Times Tied	0	
Time with Lead	08:31	01:05

Points from	UNM	SJS
Turnovers	5	5
Paint	8	8
Second Chance	0	2
Fast Breaks	0	0
Bench	5	4

Period by Period Scoring					
	1st	2nd	3rd	4th	TOT
UNM	18	14	18	15	65
SJS	12	16	14	12	54



Period 2

Quarter Starters:

SJS	0 Summers S	11 Davis-Jones M	15 Anderson M	30 Ma S	34 Smith S
UNM	5 Langermann L	12 Augmon A	22 Kohl C	30 Reus P	33 Cumber V

Game Time	SJS	Score	Diff	UNM
09:55				30 REUS P 3pt FG , jump shot missed
09:50	0 SUMMERS S defensive rebound (1)			
09:36	0 SUMMERS S 2pt FG outside the paint, jump shot missed			
09:32				12 AUGMON A defensive rebound (3)
09:24		12-21	-9	5 LANGERMANN L 3pt FG , jump shot made (8)
09:24				30 REUS P assist (1)
09:05	11 DAVIS-JONES M 2pt FG in the paint, layup missed			
09:01				33 CUMBER V defensive rebound (3)
08:54		12-24	-12	33 CUMBER V 3pt FG , jump shot made (3)
08:31	34 SMITH S turnover lost ball (1)			5 LANGERMANN L steal (1)
08:24				22 KOHL C 2pt FG from turnover in the paint, layup missed
08:20	30 MA S defensive rebound (2)			
07:53	30 MA S 3pt FG , jump shot made (3)	15-24	-9	
07:53	15 ANDERSON M assist (2)			
07:37		15-26	-11	33 CUMBER V 2pt FG outside the paint, jump shot made (5)
07:37				30 REUS P assist (2)
07:20	15 ANDERSON M 3pt FG , jump shot missed			
07:15	11 DAVIS-JONES M offensive rebound (4)			
07:00	34 SMITH S 2pt FG second chance outside the paint, jump shot missed			
06:56				30 REUS P defensive rebound (3)
06:42				12 AUGMON A 2pt FG in the paint, floating jump shot missed
06:38	0 SUMMERS S defensive rebound (2)			
06:23	15 ANDERSON M 2pt FG in the paint, layup made (4)	17-26	-9	
06:06		17-28	-11	33 CUMBER V 2pt FG in the paint, layup made (7)
06:06				12 AUGMON A assist (3)
06:06	11 DAVIS-JONES M foul shooting (1 - 1)			33 CUMBER V foul drawn (1)
06:06	0 SUMMERS S substitution out			
06:06	34 SMITH S substitution out			
06:06	21 KELEMENI S substitution in			
06:06	31 GRIZELJ M substitution in			
06:06				12 AUGMON A substitution out
06:06				15 BATES J substitution in
06:06		17-29	-12	33 CUMBER V free throw 1 - 1 made (8)
05:39	21 KELEMENI S 3pt FG , jump shot made (6)	20-29	-9	
05:39	11 DAVIS-JONES M assist (1)			
05:20				22 KOHL C 3pt FG , jump shot missed
05:16	31 GRIZELJ M defensive rebound (1)			
05:01	15 ANDERSON M 2pt FG in the paint, layup missed			
04:58	15 ANDERSON M offensive rebound (1)			
04:44	15 ANDERSON M 3pt FG second chance, jump shot missed			
04:42				defensive rebound (14)
04:42				Timeout media



Official Basketball Play by Play - 2nd Period
New Mexico at San Jose St.
 01/31/24 Provident Credit Union Event Center, San Jose
 2023-24 Women's Basketball

Game Time: 11:00 AM
Game Duration: 2:05
Attendance: 220

Officials: Michol Murray, Anita Ortega, Kenneth Nash

Game Time	SJS	Score	Diff	UNM
04:42	31 GRIZELJ M substitution out			
04:42	24 MORELAND A substitution in			
04:42				15 BATES J substitution out
04:42				30 REUS P substitution out
04:42				10 LAURO P substitution in
04:42				12 AUGMON A substitution in
04:32				12 AUGMON A turnover travel (2)
04:19	24 MORELAND A 2pt FG from turnover in the paint, layup missed			
04:15				33 CUMBER V defensive rebound (4)
04:08				12 AUGMON A 2pt FG in the paint, layup blocked
04:08	15 ANDERSON M block (1)			
04:02	15 ANDERSON M defensive rebound (2)			
03:51	30 MA S 3pt FG , jump shot missed			
03:46				10 LAURO P defensive rebound (1)
03:19				12 AUGMON A 2pt FG in the paint, hook shot missed
03:16	24 MORELAND A defensive rebound (1)			
03:07	11 DAVIS-JONES M foul drawn (3)			5 LANGERMANN L foul personal (1 - 1)
03:07	24 MORELAND A substitution out			
03:07	34 SMITH S substitution in			
02:56	30 MA S 3pt FG , jump shot made (6)	23-29	-6	
02:56	15 ANDERSON M assist (3)			
02:42				12 AUGMON A turnover bad pass (3)
02:42	34 SMITH S substitution out			
02:42	31 GRIZELJ M substitution in			
02:42				10 LAURO P substitution out
02:42				30 REUS P substitution in
02:28	15 ANDERSON M turnover lost ball (1)			30 REUS P steal (1)
02:23		23-31	-8	30 REUS P 2pt FG fast break from turnover in the paint, layup made (2)
02:23				33 CUMBER V assist (1)
02:04	30 MA S 3pt FG , jump shot made (9)	26-31	-5	
02:04	21 KELEMENI S assist (1)			
01:36				12 AUGMON A 3pt FG , jump shot missed
01:32	15 ANDERSON M defensive rebound (3)			
01:16	15 ANDERSON M foul drawn (1)			5 LANGERMANN L foul shooting (2 - 2)
01:16	31 GRIZELJ M substitution out			
01:16	24 MORELAND A substitution in			
01:16	15 ANDERSON M free throw 1 - 2 made (5)	27-31	-4	
01:16	15 ANDERSON M free throw 2 - 2 made (6)	28-31	-3	
01:16	15 ANDERSON M substitution out			
01:16	0 SUMMERS S substitution in			
00:58	30 MA S foul shooting (1 - 2)			30 REUS P foul drawn (1)
00:58				30 REUS P free throw 1 - 2 missed
00:58				offensive dead ball rebound (1)
00:58		28-32	-4	30 REUS P free throw 2 - 2 made (3)
00:41	24 MORELAND A 2pt FG in the paint, jump shot missed			
00:36				33 CUMBER V defensive rebound (5)
00:28	0 SUMMERS S steal (1)			12 AUGMON A turnover lost ball (4)
00:05	0 SUMMERS S turnover travel (1)			



Official Basketball Play by Play - 2nd Period
New Mexico at San Jose St.
01/31/24 Provident Credit Union Event Center, San Jose
2023-24 Women's Basketball

Game Time: 11:00 AM
Game Duration: 2:05
Attendance: 220

Officials: Michol Murray, Anita Ortega, Kenneth Nash

Game Time	SJS	Score	Diff	UNM
00:05				12 AUGMON A substitution out
00:05				3 WILSON N substitution in
00:00				3 WILSON N 2pt FG from turnover in the paint, jump shot blocked
00:00	24 MORELAND A block (1)			
00:00	0 SUMMERS S defensive rebound (3)			
END OF PERIOD				
SJS 28-32 UNM				



Officials: Michol Murray, Anita Ortega, Kenneth Nash

New Mexico - 14

NO.	Name	F/C	Min	FG			Rebounds			Fouls		TP	AS	TO	ST	Blocks		+/-
				M-A	3P	FT	OR	DR	TOT	PF	FD					BS	BA	
30	Paula Reus	F	08:00	1-2	0-1	1-2	0	1	1	0	1	3	2	0	1	0	0	1
22	Charlotte Kohl	C	10:00	0-2	0-1	0-0	0	0	0	0	0	0	0	0	0	0	0	-2
3	Nyah Wilson	G	00:06	0-1	0-0	0-0	0	0	0	0	0	0	0	0	0	1	0	
12	Aniyah Augmon	G	08:30	0-4	0-1	0-0	0	1	1	0	0	0	1	3	0	0	1	0
33	Vianè Cumber	G	10:00	3-3	1-1	1-1	0	3	3	0	1	8	1	0	0	0	0	-2
5	Lara Langermann		10:00	1-1	1-1	0-0	0	0	0	2	0	3	0	0	1	0	0	-2
15	Jaelyn Bates		01:24	0-0	0-0	0-0	0	0	0	0	0	0	0	0	0	0	0	-2
10	Paris Lauro		02:00	0-0	0-0	0-0	0	1	1	0	0	0	0	0	0	0	0	-3
Team							0	1	1		0		0					
Totals				5-13	2-5	2-3	0	7	7	2	2	14	4	3	2	0	2	-2

Shooting By Period		
2 nd FG%	5-13	38.5%
3PT%	2-5	40.0%
FT%	2-3	66.7%
GM FG%	5-13	38.5%
3PT%	2-5	40.0%
FT%	2-3	66.7%

Dead Ball Rebounds: 1, 0

Technical Fouls::NONE

San Jose St. - 16

NO.	Name	F/C	Min	FG			Rebounds			Fouls		TP	AS	TO	ST	Blocks		+/-
				M-A	3P	FT	OR	DR	TOT	PF	FD					BS	BA	
11	Marisa Davis-Jones	F	10:00	0-1	0-0	0-0	1	0	1	1	1	0	1	0	0	0	0	2
15	Maya Anderson	F	08:44	1-4	0-2	2-2	1	2	3	0	1	4	2	1	0	1	0	3
24	Amhyia Moreland	F	02:51	0-2	0-0	0-0	0	1	1	0	0	0	0	0	0	1	0	1
0	Sydni Summers	G	05:10	0-1	0-0	0-0	0	3	3	0	0	0	0	1	1	0	0	-6
21	Sofia Kelemeni	G	06:06	1-1	1-1	0-0	0	0	0	0	0	3	1	0	0	0	0	7
30	Sabrina Ma		10:00	3-4	3-4	0-0	0	1	1	1	0	9	0	0	0	0	0	2
31	Mia Grizelj		02:50	0-0	0-0	0-0	0	1	1	0	0	0	0	0	0	0	0	3
34	Semaj Smith		04:19	0-1	0-0	0-0	0	0	0	0	0	0	0	1	0	0	0	-2
Team							0	0	0		0		0					
Totals				5-14	4-7	2-2	2	8	10	2	2	16	4	3	1	2	0	2

Shooting By Period		
2 nd FG%	5-14	35.7%
3PT%	4-7	57.1%
FT%	2-2	100%
GM FG%	5-14	35.7%
3PT%	4-7	57.1%
FT%	2-2	100.0%

Dead Ball Rebounds: 0, 0

Technical Fouls::NONE

	UNM	SJS
Biggest lead	12 (2 nd 8:54)	0 (1 st 10:00)
Best Scoring Run	6(2 nd 8:54)	6(2 nd 2:56)
Lead Changes	0	
Times Tied	0	
Time with Lead	09:55	00:00

Points from	UNM	SJS
Turnovers	2	0
Paint	4	2
Second Chance	0	0
Fast Breaks	2	0
Bench	3	9

	Period by Period Scoring				
	1st	2nd	3rd	4th	TOT
UNM	18	14	18	15	65
SJS	12	16	14	12	54



Officials: Michol Murray, Anita Ortega, Kenneth Nash

New Mexico - 32

NO.	Name	F/C	Min	FG			3P			FT			Rebounds			Fouls		TP	AS	TO	ST	Blocks		+/-
				M-A	M-A	M-A	OR	DR	TOT	PF	FD	BS	BA											
30	Paula Reus	F	18:00	1-4	0-2	1-2	0	3	3	0	1	3	2	1	1	0	0	7						
22	Charlotte Kohl	C	14:41	0-2	0-1	0-0	1	1	2	0	1	0	0	0	0	0	0	0						
3	Nyah Wilson	G	05:56	1-4	1-2	0-0	0	1	1	2	0	3	0	1	0	0	1	5						
12	Aniyah Augmon	G	18:30	4-10	1-4	1-1	0	3	3	0	2	10	3	4	0	0	1	6						
33	Vianè Cumber	G	18:41	3-4	1-2	1-1	0	5	5	1	1	8	1	0	1	0	0	1						
5	Lara Langermann		15:29	3-3	2-2	0-0	0	0	0	2	0	8	0	1	1	0	0	2						
14	Hulda Joaquim		05:19	0-0	0-0	0-0	0	1	1	1	0	0	0	1	0	0	0	4						
15	Jaelyn Bates		01:24	0-0	0-0	0-0	0	0	0	0	0	0	0	0	0	0	0	-2						
10	Paris Lauro		02:00	0-0	0-0	0-0	0	1	1	0	0	0	0	0	0	0	0	-3						
Team							0	1	1			0			0									
Totals				12-27	5-13	3-4	1	16	17	6	5	32	6	8	3	0	2	4						

Shooting By Period		
1 st FG%	7-14	50.0%
3PT%	3-8	37.5%
FT%	1-1	100%
2 nd FG%	5-13	38.5%
3PT%	2-5	40.0%
FT%	2-3	66.7%
GM FG%	12-27	44.4%
3PT%	5-13	38.5%
FT%	3-4	75.0%

Dead Ball Rebounds: 1, 0

Technical Fouls::NONE

San Jose St. - 28

NO.	Name	F/C	Min	FG			3P			FT			Rebounds			Fouls		TP	AS	TO	ST	Blocks		+/-
				M-A	M-A	M-A	OR	DR	TOT	PF	FD	BS	BA											
11	Marisa Davis-Jones	F	20:00	0-5	0-1	1-2	2	2	4	1	3	1	1	0	1	0	0	-4						
15	Maya Anderson	F	16:42	2-7	0-3	2-2	1	2	3	0	1	6	3	1	0	1	0	-4						
24	Amhyia Moreland	F	08:41	1-5	0-0	0-0	0	1	1	2	0	2	0	1	1	1	0	-4						
0	Sydni Summers	G	13:29	0-2	0-1	0-0	0	3	3	1	1	0	1	1	1	0	0	-9						
21	Sofia Kelemeni	G	15:56	2-3	2-2	0-0	0	2	2	0	0	6	1	1	0	0	0	1						
31	Mia Grizelj		05:43	0-0	0-0	0-0	0	1	1	0	0	0	0	0	0	0	0	-2						
30	Sabrina Ma		13:24	3-5	3-5	0-0	1	1	2	1	1	9	0	0	1	0	0	0						
34	Semaj Smith		06:05	2-3	0-0	0-0	1	1	2	0	0	4	0	1	0	0	0	2						
Team							0	1	1			0			1									
Totals				10-30	5-12	3-4	5	14	19	5	6	28	6	6	4	2	0	-4						

Shooting By Period		
1 st FG%	5-16	31.3%
3PT%	1-5	20.0%
FT%	1-2	50%
2 nd FG%	5-14	35.7%
3PT%	4-7	57.1%
FT%	2-2	100%
GM FG%	10-30	33.3%
3PT%	5-12	41.7%
FT%	3-4	75.0%

Dead Ball Rebounds: 0, 0

Technical Fouls::NONE

	UNM	SJS
Biggest lead	12 (2 nd 8:54)	2 (1 st 7:46)
Best Scoring Run	11 (1 st 2:03)	6 (2 nd 2:56)
Lead Changes	4	
Times Tied	0	
Time with Lead	18:31	01:05

Points from	UNM	SJS
Turnovers	7	5
Paint	12	10
Second Chance	0	2
Fast Breaks	2	0
Bench	8	13

	Period by Period Scoring				
	1st	2nd	3rd	4th	TOT
UNM	18	14	18	15	65
SJS	12	16	14	12	54



Period 3

Quarter Starters:

SJS	0 Summers S	11 Davis-Jones M	15 Anderson M	21 Kelemeni S	34 Smith S
UNM	3 Wilson N	12 Augmon A	22 Kohl C	30 Reus P	33 Cumber V

Game Time	SJS	Score	Diff	UNM
10:00	24 MORELAND A substitution out			
10:00	30 MA S substitution out			
10:00	15 ANDERSON M substitution in			
10:00	34 SMITH S substitution in			
10:00				5 LANGERMANN L substitution out
10:00				12 AUGMON A substitution in
09:50	11 DAVIS-JONES M 2pt FG in the paint, layup missed			
09:46				33 CUMBER V defensive rebound (6)
09:33		28-34	-6	3 WILSON N 2pt FG outside the paint, jump shot made (5)
09:12	21 KELEMENI S 3pt FG , jump shot missed			
09:09				22 KOHL C defensive rebound (3)
09:01		28-37	-9	30 REUS P 3pt FG , jump shot made (6)
09:01				3 WILSON N assist (1)
08:45	0 SUMMERS S turnover lost ball (2)			
08:35		28-40	-12	33 CUMBER V 3pt FG from turnover, jump shot made (11)
08:35				12 AUGMON A assist (4)
08:25	Timeout 30 Sec			
08:25				Timeout media
08:25	21 KELEMENI S substitution out			
08:25	34 SMITH S substitution out			
08:25	30 MA S substitution in			
08:25	31 GRIZELJ M substitution in			
08:05	11 DAVIS-JONES M foul drawn (4)			30 REUS P foul personal (1 - 1)
07:54	11 DAVIS-JONES M 2pt FG in the paint, layup made (3)	30-40	-10	
07:36		30-42	-12	3 WILSON N 2pt FG in the paint, layup made (7)
07:00	31 GRIZELJ M 2pt FG in the paint, hook shot missed			
06:57				22 KOHL C defensive rebound (4)
06:30	30 MA S foul shooting (2 - 1)			12 AUGMON A foul drawn (3)
06:30	0 SUMMERS S substitution out			
06:30	31 GRIZELJ M substitution out			
06:30	21 KELEMENI S substitution in			
06:30	24 MORELAND A substitution in			
06:30		30-43	-13	12 AUGMON A free throw 1 - 2 made (11)
06:30				12 AUGMON A free throw 2 - 2 missed
06:29	11 DAVIS-JONES M defensive rebound (5)			
06:16	15 ANDERSON M 2pt FG in the paint, layup made (8)	32-43	-11	
06:16	24 MORELAND A assist (1)			
05:53				12 AUGMON A 2pt FG in the paint, layup missed
05:49	30 MA S defensive rebound (3)			
05:43	11 DAVIS-JONES M foul drawn (5)			30 REUS P foul personal (2 - 2)
05:43	24 MORELAND A substitution out			
05:43	34 SMITH S substitution in			
05:38	34 SMITH S foul drawn (1)			22 KOHL C foul shooting (1 - 3)



Official Basketball Play by Play - 3rd Period
New Mexico at San Jose St.
 01/31/24 Provident Credit Union Event Center, San Jose
 2023-24 Women's Basketball

Game Time: 11:00 AM
Game Duration: 2:05
Attendance: 220

Officials: Michol Murray, Anita Ortega, Kenneth Nash

Game Time	SJS	Score	Diff	UNM
05:38	34 SMITH S free throw 1 - 2 made (5)	33-43	-10	
05:38	34 SMITH S free throw 2 - 2 made (6)	34-43	-9	
05:25				33 CUMBER V 2pt FG outside the paint, jump shot missed
05:23	defensive rebound (22)			
05:23	34 SMITH S substitution out			
05:23	0 SUMMERS S substitution in			
05:14	15 ANDERSON M turnover travel (2)			
05:14				22 KOHL C substitution out
05:14				14 JOAQUIM H substitution in
04:57	21 KELEMENI S foul shooting (1 - 2)			3 WILSON N foul drawn (1)
04:57	Timeout media			
04:57				3 WILSON N free throw 1 - 2 missed
04:57				offensive dead ball rebound (2)
04:57		34-44	-10	3 WILSON N free throw 2 - 2 made (8)
04:47	11 DAVIS-JONES M 2pt FG in the paint, layup made (5)	36-44	-8	
04:47	0 SUMMERS S assist (2)			
04:36				12 AUGMON A 2pt FG in the paint, layup missed
04:33	21 KELEMENI S defensive rebound (3)			
04:15	11 DAVIS-JONES M 2pt FG in the paint, jump shot missed			
04:12				33 CUMBER V defensive rebound (7)
04:01		36-46	-10	14 JOAQUIM H 2pt FG in the paint, layup made (2)
04:01				3 WILSON N assist (2)
03:37	11 DAVIS-JONES M 2pt FG outside the paint, jump shot missed			
03:34	30 MA S offensive rebound (4)			
03:19	0 SUMMERS S 2pt FG second chance in the paint, layup missed			
03:16				3 WILSON N defensive rebound (2)
03:10				12 AUGMON A turnover lost ball (5)
03:10	15 ANDERSON M substitution out			
03:10	24 MORELAND A substitution in			
03:10				12 AUGMON A substitution out
03:10				5 LANGERMANN L substitution in
03:10				14 JOAQUIM H substitution out
03:10				22 KOHL C substitution in
02:58	24 MORELAND A foul drawn (1)			22 KOHL C foul shooting (2 - 4)
02:58	24 MORELAND A free throw 1 - 2 missed			
02:58	offensive dead ball rebound (1)			
02:58	24 MORELAND A free throw 2 - 2 missed			
02:56				22 KOHL C defensive rebound (5)
02:41	21 KELEMENI S foul shooting (2 - 3)			3 WILSON N foul drawn (2)
02:41	24 MORELAND A substitution out			
02:41	34 SMITH S substitution in			
02:41		36-47	-11	3 WILSON N free throw 1 - 2 made (9)
02:41		36-48	-12	3 WILSON N free throw 2 - 2 made (10)
02:25	34 SMITH S 2pt FG in the paint, layup missed			
02:22	11 DAVIS-JONES M offensive rebound (6)			
02:21	11 DAVIS-JONES M 2pt FG second chance in the paint, layup made (7)	38-48	-10	
01:58				3 WILSON N 2pt FG in the paint, layup missed
01:55				22 KOHL C offensive rebound (6)



Officials: Michol Murray, Anita Ortega, Kenneth Nash

Game Time	SJS	Score	Diff	UNM
01:52	11 DAVIS-JONES M steal (2)			22 KOHL C turnover lost ball (1)
01:52	11 DAVIS-JONES M turnover lost ball (1)			22 KOHL C steal (1)
01:52	11 DAVIS-JONES M foul personal (2 - 4)			22 KOHL C foul drawn (2)
01:40				22 KOHL C 2pt FG from turnover in the paint, layup missed
01:36	30 MA S defensive rebound (5)			
01:33	34 SMITH S foul offensive (1 - 5)			22 KOHL C foul drawn (3)
01:33	34 SMITH S turnover offensive (2)			
01:27				3 WILSON N 3pt FG from turnover, jump shot missed
01:21	11 DAVIS-JONES M defensive rebound (7)			
01:04	11 DAVIS-JONES M 2pt FG in the paint, layup made (9)	40-48	-8	
00:36	30 MA S foul shooting (3 - 6)			5 LANGERMANN L foul drawn (1)
00:36				3 WILSON N substitution out
00:36				30 REUS P substitution out
00:36				10 LAURO P substitution in
00:36				12 AUGMON A substitution in
00:36	34 SMITH S substitution out			
00:36	24 MORELAND A substitution in			
00:36	30 MA S substitution out			
00:36	15 ANDERSON M substitution in			
00:36		40-49	-9	5 LANGERMANN L free throw 1 - 2 made (9)
00:36		40-50	-10	5 LANGERMANN L free throw 2 - 2 made (10)
00:21	24 MORELAND A foul drawn (2)			22 KOHL C foul personal (3 - 5)
00:21				22 KOHL C substitution out
00:21				14 JOAQUIM H substitution in
00:21	24 MORELAND A free throw 1 - 2 made (3)	41-50	-9	
00:21	24 MORELAND A free throw 2 - 2 made (4)	42-50	-8	
00:21				12 AUGMON A substitution out
00:21				3 WILSON N substitution in
END OF PERIOD				
SJS 42-50 UNM				



Officials: Michol Murray, Anita Ortega, Kenneth Nash

New Mexico - 18

NO.	Name	F/C	Min	FG			Rebounds			Fouls		TP	AS	TO	ST	Blocks		+/-
				M-A	3P	FT	OR	DR	TOT	PF	FD					BS	BA	
30	Paula Reus	F	09:23	1-1	1-1	0-0	0	0	0	2	0	3	0	0	0	0	0	4
22	Charlotte Kohl	C	07:35	0-1	0-0	0-0	1	3	4	3	2	0	0	1	1	0	0	5
3	Nyah Wilson	G	09:45	2-4	0-1	3-4	0	1	1	0	2	7	2	0	0	0	0	4
12	Aniyah Augmon	G	07:06	0-2	0-0	1-2	0	0	0	0	1	1	1	1	0	0	0	6
33	Vianè Cumber	G	10:00	1-2	1-1	0-0	0	2	2	0	0	3	0	0	0	0	0	4
14	Hulda Joaquim		02:25	1-1	0-0	0-0	0	0	0	0	0	2	0	0	0	0	0	-1
5	Lara Langermann		03:10	0-0	0-0	2-2	0	0	0	0	1	2	0	0	0	0	0	-2
10	Paris Lauro		00:37	0-0	0-0	0-0	0	0	0	0	0	0	0	0	0	0	0	0
Team							0	0	0		0		0					
Totals				5-11	2-3	6-8	1	6	7	5	6	18	3	2	1	0	0	4

Shooting By Period		
3 rd FG%	5-11	45.5%
3PT%	2-3	66.7%
FT%	6-8	75%
GM FG%	5-11	45.5%
3PT%	2-3	66.7%
FT%	6-8	75.0%

Dead Ball Rebounds: 1, 0

Technical Fouls::NONE

San Jose St. - 14

NO.	Name	F/C	Min	FG			Rebounds			Fouls		TP	AS	TO	ST	Blocks		+/-
				M-A	3P	FT	OR	DR	TOT	PF	FD					BS	BA	
11	Marisa Davis-Jones	F	10:00	4-7	0-0	0-0	1	2	3	1	2	8	0	1	1	0	0	-4
15	Maya Anderson	F	07:27	1-1	0-0	0-0	0	0	0	0	0	2	0	1	0	0	0	-6
24	Amhyia Moreland	F	01:53	0-0	0-0	2-4	0	0	0	0	2	2	1	0	0	0	0	1
0	Sydni Summers	G	08:53	0-1	0-0	0-0	0	0	0	0	0	0	1	1	0	0	0	-7
21	Sofia Kelemeni	G	08:05	0-1	0-1	0-0	0	1	1	2	0	0	0	0	0	0	0	-4
34	Semaj Smith		03:59	0-1	0-0	2-2	0	0	0	1	1	2	0	1	0	0	0	-4
30	Sabrina Ma		07:48	0-0	0-0	0-0	1	2	3	2	0	0	0	0	0	0	0	4
31	Mia Grizelj		01:55	0-1	0-0	0-0	0	0	0	0	0	0	0	0	0	0	0	0
Team							0	1	1		0		0					
Totals				5-12	0-1	4-6	2	6	8	6	5	14	2	4	1	0	0	-4

Shooting By Period		
3 rd FG%	5-12	41.7%
3PT%	0-1	0.0%
FT%	4-6	66.7%
GM FG%	5-12	41.7%
3PT%	0-1	0.0%
FT%	4-6	66.7%

Dead Ball Rebounds: 1, 0

Technical Fouls::NONE

	UNM	SJS
Biggest lead	13 (3 rd 6:30)	0 (1 st 10:00)
Best Scoring Run	8(3 rd 8:35)	4(3 rd 5:38)
Lead Changes	0	
Times Tied	0	
Time with Lead	09:50	00:00

Points from	UNM	SJS
Turnovers	4	0
Paint	4	10
Second Chance	0	2
Fast Breaks	0	0
Bench	4	2

Period by Period Scoring					
	1st	2nd	3rd	4th	TOT
UNM	18	14	18	15	65
SJS	12	16	14	12	54



Period 4

Quarter Starters:

SJS	0 Summers S	11 Davis-Jones M	15 Anderson M	21 Kelemeni S	24 Moreland A
UNM	3 Wilson N	5 Langermann L	10 Lauro P	12 Augmon A	14 Joaquim H

Game Time	SJS	Score	Diff	UNM
10:00				33 CUMBER V substitution out
10:00				12 AUGMON A substitution in
09:39		42-52	-10	3 WILSON N 2pt FG in the paint, layup made (12)
09:23	24 MORELAND A 2pt FG outside the paint, jump shot missed			
09:20				3 WILSON N defensive rebound (3)
09:00				3 WILSON N 2pt FG in the paint, jump shot blocked
09:00	24 MORELAND A block (2)			
08:52	11 DAVIS-JONES M defensive rebound (8)			
08:42	11 DAVIS-JONES M turnover lost ball (2)			12 AUGMON A steal (1)
08:41	21 KELEMENI S foul personal (3 - 1)			12 AUGMON A foul drawn (4)
08:41	11 DAVIS-JONES M substitution out			
08:41	24 MORELAND A substitution out			
08:41	30 MA S substitution in			
08:41	34 SMITH S substitution in			
08:27				3 WILSON N 3pt FG from turnover, jump shot missed
08:22	34 SMITH S defensive rebound (3)			
08:15	15 ANDERSON M 3pt FG , jump shot missed			
08:10				3 WILSON N defensive rebound (4)
08:06		42-54	-12	3 WILSON N 2pt FG fast break in the paint, layup made (14)
07:41	21 KELEMENI S 3pt FG , jump shot missed			
07:38				5 LANGERMANN L defensive rebound (1)
07:33		42-57	-15	5 LANGERMANN L 3pt FG , jump shot made (13)
07:33				12 AUGMON A assist (5)
07:27	Timeout 30 Sec			
07:27	Timeout media			
07:11	21 KELEMENI S substitution out			
07:11	11 DAVIS-JONES M substitution in			
07:11	15 ANDERSON M turnover bad pass (3)			
06:51	34 SMITH S steal (1)			12 AUGMON A turnover bad pass (6)
06:38	34 SMITH S 2pt FG from turnover in the paint, layup missed			
06:35				10 LAURO P defensive rebound (2)
06:30	11 DAVIS-JONES M foul personal (3 - 2)			12 AUGMON A foul drawn (5)
06:30	0 SUMMERS S substitution out			
06:30	21 KELEMENI S substitution in			
06:24				10 LAURO P 3pt FG , jump shot missed
06:19	21 KELEMENI S defensive rebound (4)			
06:00	34 SMITH S turnover lost ball (3)			
05:40				12 AUGMON A 2pt FG from turnover outside the paint, jump shot missed
05:37	30 MA S defensive rebound (6)			
05:19	15 ANDERSON M 2pt FG in the paint, layup blocked			
05:19				10 LAURO P block (1)
05:19	offensive rebound (32)			



Officials: Michol Murray, Anita Ortega, Kenneth Nash

Game Time	SJS	Score	Diff	UNM
05:19	34 SMITH S substitution out			
05:19	24 MORELAND A substitution in			
05:19				10 LAURO P substitution out
05:19				30 REUS P substitution in
05:16	24 MORELAND A foul offensive (3 - 3)			12 AUGMON A foul drawn (6)
05:16	24 MORELAND A turnover offensive (2)			
04:54				3 WILSON N 2pt FG from turnover in the paint, layup missed
04:51				3 WILSON N offensive rebound (5)
04:49				5 LANGERMANN L 3pt FG from turnover second chance, jump shot missed
04:45	defensive rebound (33)			
04:33	15 ANDERSON M turnover travel (4)			
04:18				3 WILSON N 3pt FG from turnover, jump shot missed
04:13	30 MA S defensive rebound (7)			
04:03	24 MORELAND A 2pt FG in the paint, layup made (6)	44-57	-13	
04:03	21 KELEMENI S assist (2)			
04:03	24 MORELAND A foul drawn (3)			14 JOAQUIM H foul shooting (2 - 1)
04:03				5 LANGERMANN L substitution out
04:03				14 JOAQUIM H substitution out
04:03				22 KOHL C substitution in
04:03				33 CUMBER V substitution in
04:03	24 MORELAND A free throw 1 - 1 missed			
04:01	15 ANDERSON M offensive rebound (4)			
03:59	24 MORELAND A 2pt FG second chance in the paint, layup made (8)	46-57	-11	
03:59	15 ANDERSON M assist (4)			
03:39	30 MA S foul shooting (4 - 4)			22 KOHL C foul drawn (4)
03:39	24 MORELAND A substitution out			
03:39	34 SMITH S substitution in			
03:39		46-58	-12	22 KOHL C free throw 1 - 2 made (1)
03:39				22 KOHL C free throw 2 - 2 missed
03:37				30 REUS P offensive rebound (4)
03:34				33 CUMBER V 3pt FG second chance, jump shot missed
03:29	34 SMITH S defensive rebound (4)			
03:21	21 KELEMENI S turnover lost ball (2)			30 REUS P steal (2)
03:16				30 REUS P turnover bad pass (2)
03:05	11 DAVIS-JONES M 3pt FG from turnover, jump shot missed			
02:59				30 REUS P defensive rebound (5)
02:53		46-60	-14	12 AUGMON A 2pt FG in the paint, floating jump shot made (13)
02:36	34 SMITH S 2pt FG in the paint, hook shot missed			
02:32				22 KOHL C defensive rebound (7)
02:13		46-63	-17	30 REUS P 3pt FG , jump shot made (9)
02:13				12 AUGMON A assist (6)
01:58	21 KELEMENI S 2pt FG in the paint, layup blocked			
01:58				22 KOHL C block (1)
01:58	offensive rebound (37)			
01:58	0 SUMMERS S substitution in			
01:58	15 ANDERSON M substitution out			
01:45	30 MA S 3pt FG second chance, jump shot missed			
01:40				33 CUMBER V defensive rebound (8)



Officials: Michol Murray, Anita Ortega, Kenneth Nash

Game Time	SJS	Score	Diff	UNM
01:21				30 REUS P 3pt FG , jump shot missed
01:16	11 DAVIS-JONES M defensive rebound (9)			
00:53	34 SMITH S 2pt FG in the paint, layup made (8)	48-63	-15	
00:53	0 SUMMERS S assist (3)			
00:40	0 SUMMERS S foul personal (2 - 5)			33 CUMBER V foul drawn (2)
00:40	34 SMITH S substitution out			
00:40	15 ANDERSON M substitution in			
00:40				3 WILSON N substitution out
00:40				12 AUGMON A substitution out
00:40				22 KOHL C substitution out
00:40				30 REUS P substitution out
00:40				5 LANGERMANN L substitution in
00:40				10 LAURO P substitution in
00:40				14 JOAQUIM H substitution in
00:40				15 BATES J substitution in
00:40		48-64	-16	33 CUMBER V free throw 1 - 2 made (12)
00:40		48-65	-17	33 CUMBER V free throw 2 - 2 made (13)
00:40				33 CUMBER V substitution out
00:40				21 CURTIS M substitution in
00:40	Timeout 60 Sec			
00:39	30 MA S 3pt FG , jump shot missed			
00:34	11 DAVIS-JONES M offensive rebound (10)			
00:34	jump ball situation			
00:29	15 ANDERSON M 3pt FG second chance, jump shot missed			
00:25	21 KELEMENI S offensive rebound (5)			
00:23	0 SUMMERS S 3pt FG second chance, jump shot made (3)	51-65	-14	
00:23	21 KELEMENI S assist (3)			
00:12	30 MA S steal (2)			21 CURTIS M turnover bad pass (1)
00:06	0 SUMMERS S 3pt FG from turnover, jump shot made (6)	54-65	-11	
00:06	21 KELEMENI S assist (4)			
00:04				15 BATES J turnover bad pass (1)
00:00	11 DAVIS-JONES M 2pt FG from turnover outside the paint, jump shot missed			
00:00	15 ANDERSON M offensive rebound (5)			
END OF GAME				
SJS 54-65 UNM				



Officials: Michol Murray, Anita Ortega, Kenneth Nash

New Mexico - 15

NO.	Name	F/C	Min	FG			Rebounds			Fouls		TP	AS	TO	ST	Blocks		+/-
				M-A	M-A	M-A	OR	DR	TOT	PF	FD					BS	BA	
30	Paula Reus	F	04:39	1-2	1-2	0-0	1	1	2	0	0	3	0	1	1	0	0	0
22	Charlotte Kohl	C	03:23	0-0	0-0	1-2	0	1	1	0	1	1	0	0	0	1	0	2
3	Nyah Wilson	G	09:20	2-6	0-2	0-0	1	2	3	0	0	4	0	0	0	0	1	7
12	Aniyah Augmon	G	09:20	1-2	0-0	0-0	0	0	0	0	3	2	2	1	1	0	0	7
33	Vianè Cumber	G	03:23	0-1	0-1	2-2	0	1	1	0	1	2	0	0	0	0	0	4
5	Lara Langermann		06:38	1-2	1-2	0-0	0	1	1	0	0	3	0	0	0	0	0	1
10	Paris Lauro		05:22	0-1	0-1	0-0	0	1	1	0	0	0	0	0	0	1	0	3
14	Hulda Joaquim		06:38	0-0	0-0	0-0	0	0	0	1	0	0	0	0	0	0	0	1
15	Jaelyn Bates		00:41	0-0	0-0	0-0	0	0	0	0	0	0	0	1	0	0	0	-4
21	Mackenzie Curtis		00:41	0-0	0-0	0-0	0	0	0	0	0	0	0	1	0	0	0	-6
Team							0	0	0		0		0					
Totals				5-14	2-8	3-4	2	7	9	1	5	15	2	4	2	2	1	3

Shooting By Period		
4 th FG%	5-14	35.7%
3PT%	2-8	25.0%
FT%	3-4	75%
GM FG%	5-14	35.7%
3PT%	2-8	25.0%
FT%	3-4	75.0%

Dead Ball Rebounds: 0, 0

Technical Fouls::NONE

San Jose St. - 12

NO.	Name	F/C	Min	FG			Rebounds			Fouls		TP	AS	TO	ST	Blocks		+/-
				M-A	M-A	M-A	OR	DR	TOT	PF	FD					BS	BA	
11	Marisa Davis-Jones	F	08:30	0-2	0-1	0-0	1	2	3	1	0	0	0	1	0	0	0	2
15	Maya Anderson	F	08:43	0-3	0-2	0-0	2	0	2	0	0	0	1	2	0	0	1	-5
24	Amhyia Moreland	F	02:59	2-3	0-0	0-1	0	0	0	1	1	4	0	1	0	1	0	2
0	Sydni Summers	G	05:28	2-2	2-2	0-0	0	0	0	1	0	6	1	0	0	0	0	-1
21	Sofia Kelemeni	G	09:19	0-2	0-1	0-0	1	1	2	1	0	0	3	1	0	0	1	-3
30	Sabrina Ma		08:41	0-2	0-2	0-0	0	2	2	1	0	0	0	0	1	0	0	-1
34	Semaj Smith		06:21	1-3	0-0	0-0	0	2	2	0	0	2	0	1	1	0	0	-9
Team							2	1	3		0		0					
Totals				5-17	2-8	0-1	6	8	14	5	1	12	5	6	2	1	2	-3

Shooting By Period		
4 th FG%	5-17	29.4%
3PT%	2-8	25.0%
FT%	0-1	0%
GM FG%	5-17	29.4%
3PT%	2-8	25.0%
FT%	0-1	0.0%

Dead Ball Rebounds: 0, 0

Technical Fouls::NONE

	UNM	SJS
Biggest lead	17 (4 th 2:13)	0 (1 st 10:00)
Best Scoring Run	7(4 th 7:33)	6(4 th 0:06)
Lead Changes	0	
Times Tied	0	
Time with Lead	09:39	00:00

	UNM	SJS
Points from		
Turnovers	0	3
Paint	6	6
Second Chance	0	5
Fast Breaks	2	0
Bench	3	2

	Period by Period Scoring				
	1st	2nd	3rd	4th	TOT
UNM	18	14	18	15	65
SJS	12	16	14	12	54



Officials: Michol Murray, Anita Ortega, Kenneth Nash

New Mexico - 33

NO.	Name	F/C	Min	FG			Rebounds			Fouls		TP	AS	TO	ST	Blocks		+/-
				M-A	M-A	M-A	OR	DR	TOT	PF	FD					BS	BA	
30	Paula Reus	F	14:02	2-3	2-3	0-0	1	1	2	2	0	6	0	1	1	0	0	4
22	Charlotte Kohl	C	10:57	0-1	0-0	1-2	1	4	5	3	3	1	0	1	1	1	0	7
3	Nyah Wilson	G	19:04	4-10	0-3	3-4	1	3	4	0	2	11	2	0	0	0	1	11
12	Aniyah Augmon	G	16:25	1-4	0-0	1-2	0	0	0	0	4	3	3	2	1	0	0	13
33	Vianè Cumber	G	13:23	1-3	1-2	2-2	0	3	3	0	1	5	0	0	0	0	0	8
14	Hulda Joaquim		09:03	1-1	0-0	0-0	0	0	0	1	0	2	0	0	0	0	0	0
5	Lara Langermann		09:48	1-2	1-2	2-2	0	1	1	0	1	5	0	0	0	0	0	-1
10	Paris Lauro		05:58	0-1	0-1	0-0	0	1	1	0	0	0	0	0	0	1	0	3
15	Jaelyn Bates		00:41	0-0	0-0	0-0	0	0	0	0	0	0	0	1	0	0	0	-4
21	Mackenzie Curtis		00:41	0-0	0-0	0-0	0	0	0	0	0	0	0	1	0	0	0	-6
Team							0	0	0			0						
Totals				10-25	4-11	9-12	3	13	16	6	11	33	5	6	3	2	1	7

Shooting By Period		
3 rd FG%	5-11	45.5%
3PT%	2-3	66.7%
FT%	6-8	75%
4 th FG%	5-14	35.7%
3PT%	2-8	25.0%
FT%	3-4	75%
GM FG%	10-25	40.0%
3PT%	4-11	36.4%
FT%	9-12	75.0%

Dead Ball Rebounds: 1, 0

Technical Fouls::NONE

San Jose St. - 26

NO.	Name	F/C	Min	FG			Rebounds			Fouls		TP	AS	TO	ST	Blocks		+/-
				M-A	M-A	M-A	OR	DR	TOT	PF	FD					BS	BA	
11	Marisa Davis-Jones	F	18:30	4-9	0-1	0-0	2	4	6	2	2	8	0	2	1	0	0	-2
15	Maya Anderson	F	16:09	1-4	0-2	0-0	2	0	2	0	0	2	1	3	0	0	1	-11
24	Amhyia Moreland	F	04:52	2-3	0-0	2-5	0	0	0	1	3	6	1	1	0	1	0	3
0	Sydni Summers	G	14:21	2-3	2-2	0-0	0	0	0	1	0	6	2	1	0	0	0	-8
21	Sofia Kelemeni	G	17:24	0-3	0-2	0-0	1	2	3	3	0	0	3	1	0	0	1	-7
34	Semaj Smith		10:20	1-4	0-0	2-2	0	2	2	1	1	4	0	2	1	0	0	-13
30	Sabrina Ma		16:29	0-2	0-2	0-0	1	4	5	3	0	0	0	0	1	0	0	3
31	Mia Grizelj		01:55	0-1	0-0	0-0	0	0	0	0	0	0	0	0	0	0	0	0
Team							2	2	4			0						
Totals				10-29	2-9	4-7	8	14	22	11	6	26	7	10	3	1	2	-7

Shooting By Period		
3 rd FG%	5-12	41.7%
3PT%	0-1	0.0%
FT%	4-6	66.7%
4 th FG%	5-17	29.4%
3PT%	2-8	25.0%
FT%	0-1	0%
GM FG%	10-29	34.5%
3PT%	2-9	22.2%
FT%	4-7	57.1%

Dead Ball Rebounds: 1, 0

Technical Fouls::NONE

	UNM	SJS
Biggest lead	17 (4 th 2:13)	0 (1 st 10:00)
Best Scoring Run	8(3 rd 8:35)	6(4 th 0:06)
Lead Changes	0	
Times Tied	0	
Time with Lead	19:50	00:00

	UNM	SJS
Points from		
Turnovers	4	3
Paint	10	16
Second Chance	0	7
Fast Breaks	2	0
Bench	7	4

	Period by Period Scoring				
	1st	2nd	3rd	4th	TOT
UNM	18	14	18	15	65
SJS	12	16	14	12	54



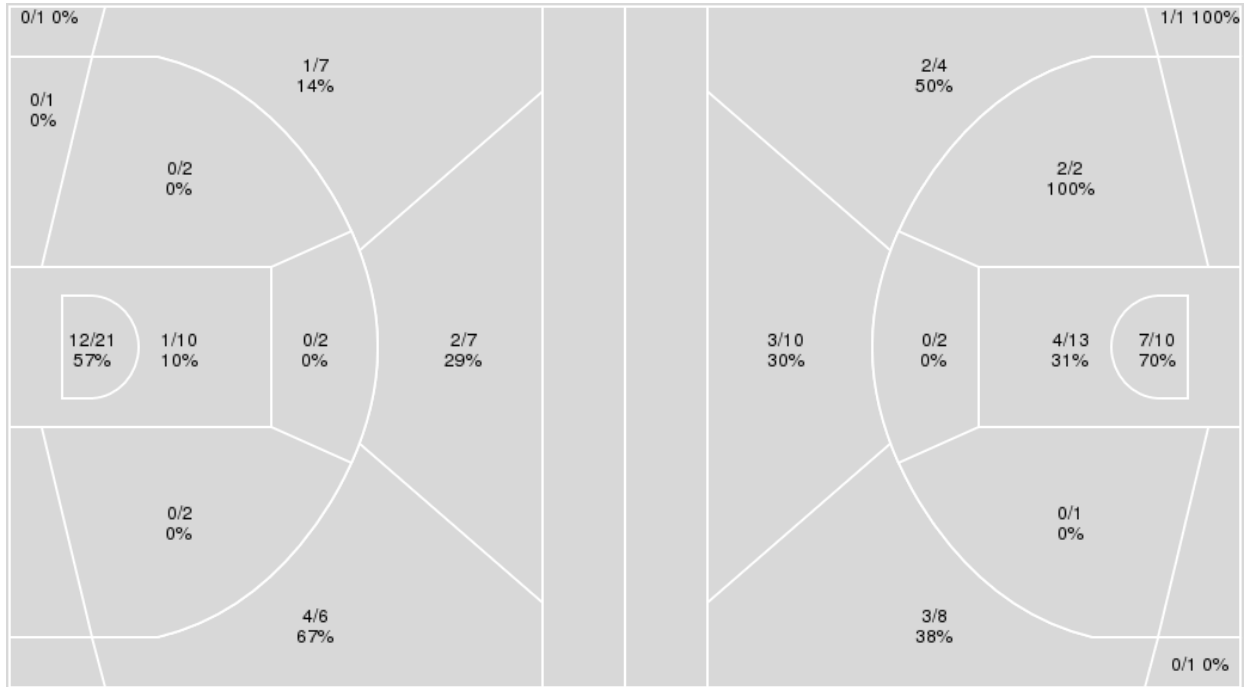
Officials: Michol Murray, Anita Ortega, Kenneth Nash

{ Players => 0, 1, 2, 3, 4, 11, 12, 13, 15, 21, 22, 23, 24, 30, 31, 32, 34, 44; } FG Types => All; Results => All;

{ Players => 1, 2, 3, 4, 5, 10, 12, 14, 15, 21, 22, 24, 30, 33; } FG Types => All; Results => All;

San Jose St.

New Mexico



San Jose St.	M/A	%
Field Goals	20/59	34
2 Points	13/38	34
3 Points	7/21	33
Free Throws	7/11	64

New Mexico	M/A	%
Field Goals	22/52	42
2 Points	13/28	46
3 Points	9/24	38
Free Throws	12/16	75



New Mexico at San Jose St.

01/31/24 Provident Credit Union Event Center, San Jose
2023-24 Women's Basketball

Game Time: 11:00 AM

Game Duration: 2:05

Attendance: 220

Officials: Michol Murray, Anita Ortega, Kenneth Nash

New Mexico

No	Name	Mins		Score		Points Diff		Points per Min		Assists		Rebounds		Steals		Turnovers	
		On	Off	On	Off	On	Off	On	Off	On	Off	On	Off	On	Off	On	Off
3	Nyah Wilson	24:60	15:00	42 - 26	23 - 28	16	-5	1.68	1.53	6	5	23	10	3	3	7	7
5	Lara Langermann	25:17	14:44	35 - 34	30 - 20	1	10	1.38	2.04	6	5	18	15	5	1	10	4
10	Paris Lauro	07:58	32:02	11 - 11	54 - 43	0	11	1.38	1.69	1	10	6	27	1	5	5	9
12	Aniyah Augmon	34:55	05:05	60 - 41	5 - 13	19	-8	1.72	0.98	11	0	30	3	5	1	11	3
14	Hulda Joaquim	14:22	25:38	20 - 16	45 - 38	4	7	1.39	1.76	3	8	11	22	2	4	7	7
15	Jaelyn Bates	02:05	37:56	3 - 9	62 - 45	-6	17	1.45	1.63	0	11	1	32	0	6	2	12
21	Mackenzie Curtis	00:41	39:20	0 - 6	65 - 48	-6	17	0.00	1.65	0	11	0	33	0	6	2	12
22	Charlotte Kohl	25:38	14:22	45 - 38	20 - 16	7	4	1.76	1.39	8	3	22	11	4	2	7	7
30	Paula Reus	32:02	07:58	54 - 43	11 - 11	11	0	1.69	1.38	10	1	27	6	5	1	9	5
33	Vianè Cumber	32:04	07:57	55 - 46	10 - 8	9	2	1.72	1.26	10	1	27	6	5	1	10	4

San Jose St.

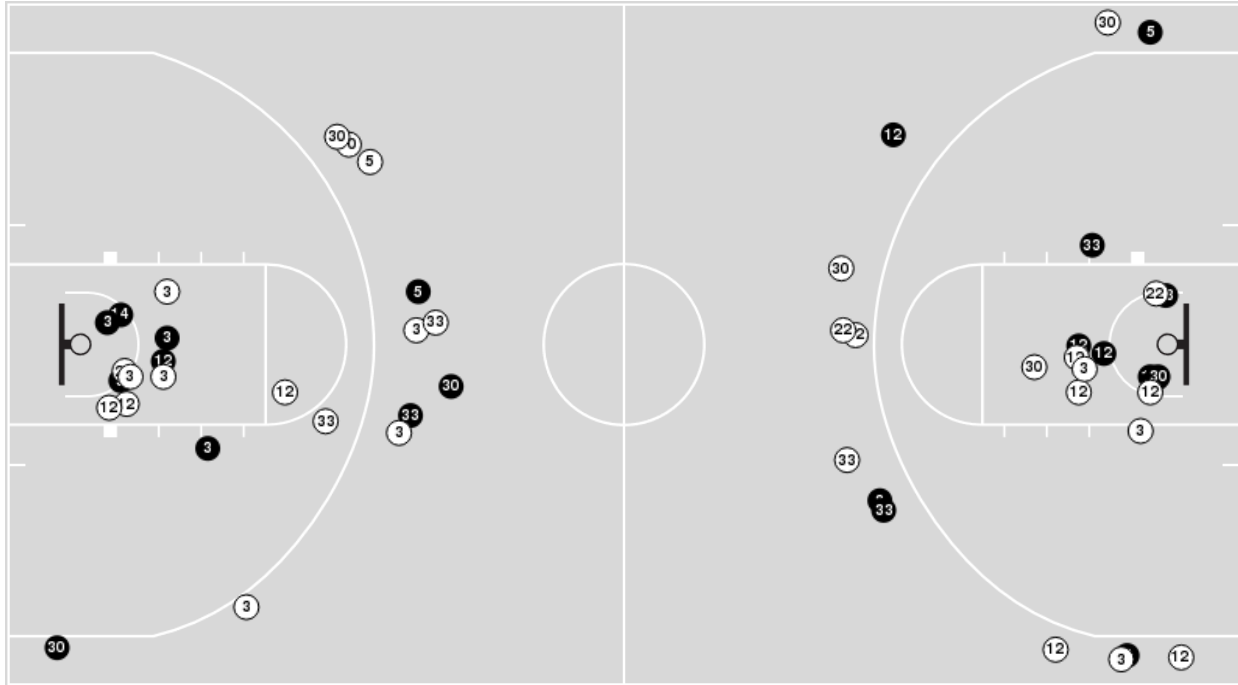
No	Name	Mins		Score		Points Diff		Points per Min		Assists		Rebounds		Steals		Turnovers	
		On	Off	On	Off	On	Off	On	Off	On	Off	On	Off	On	Off	On	Off
0	Sydni Summers	27:50	12:10	35 - 52	19 - 13	-17	6	1.26	1.56	7	6	23	18	7	0	9	7
11	Marisa Davis-Jones	38:30	01:30	54 - 60	0 - 5	-6	-5	1.40	0.00	13	0	40	1	7	0	16	0
15	Maya Anderson	32:51	07:09	44 - 59	10 - 6	-15	4	1.34	1.40	11	2	34	7	3	4	13	3
21	Sofia Kelemeni	33:20	06:40	47 - 53	7 - 12	-6	-5	1.41	1.05	12	1	37	4	6	1	14	2
24	Amhyia Moreland	13:33	26:27	18 - 19	36 - 46	-1	-10	1.33	1.36	4	9	14	27	2	5	5	11
30	Sabrina Ma	29:53	10:07	44 - 41	10 - 24	3	-14	1.47	0.99	12	1	35	6	6	1	13	3
31	Mia Grizelj	07:38	32:22	8 - 10	46 - 55	-2	-9	1.05	1.42	2	11	5	36	0	7	3	13
34	Semaj Smith	16:25	23:35	20 - 31	34 - 34	-11	0	1.22	1.44	4	9	17	24	4	3	7	9



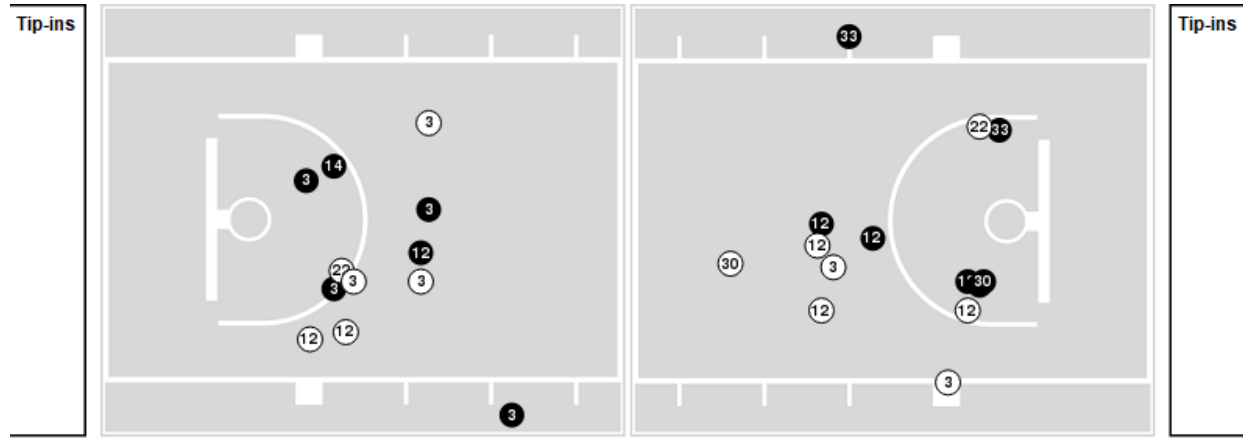
Players => 1, 2, 3, 4, 5, 10, 12, 14, 15, 21, 22, 24, 30, 33 FG Types=>All Results=>All

New Mexico

All Field Goals



Blow Up Chart



● Made ○ Missed N - Player Number

New Mexico	M/A	%
Field Goals	22/52	42
2 Points	13/28	46
3 Points	9/24	38
Free Throws	12/16	75

New Mexico	M/A	%
Points in the Paint	22 (11 / 23)	48
Fast Break Points	4 (2/2)	100
Second Chance Points	0 (0/3)	0
Effective FG%	51	

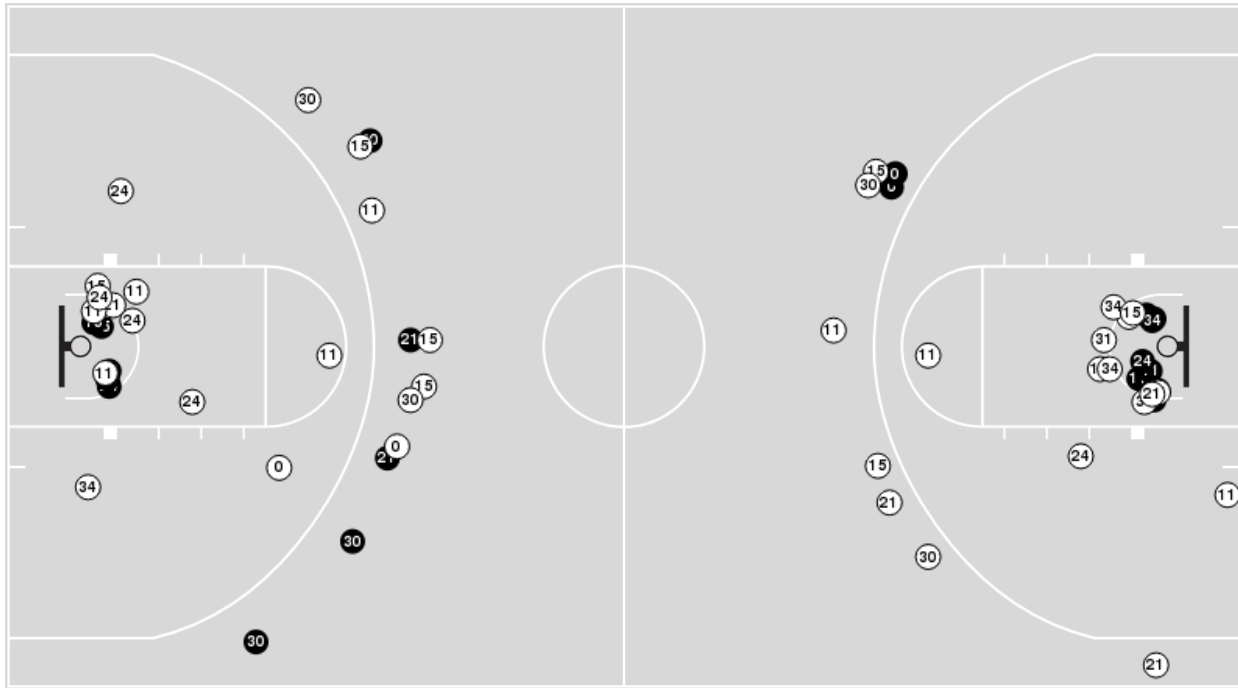


Officials: Michol Murray, Anita Ortega, Kenneth Nash

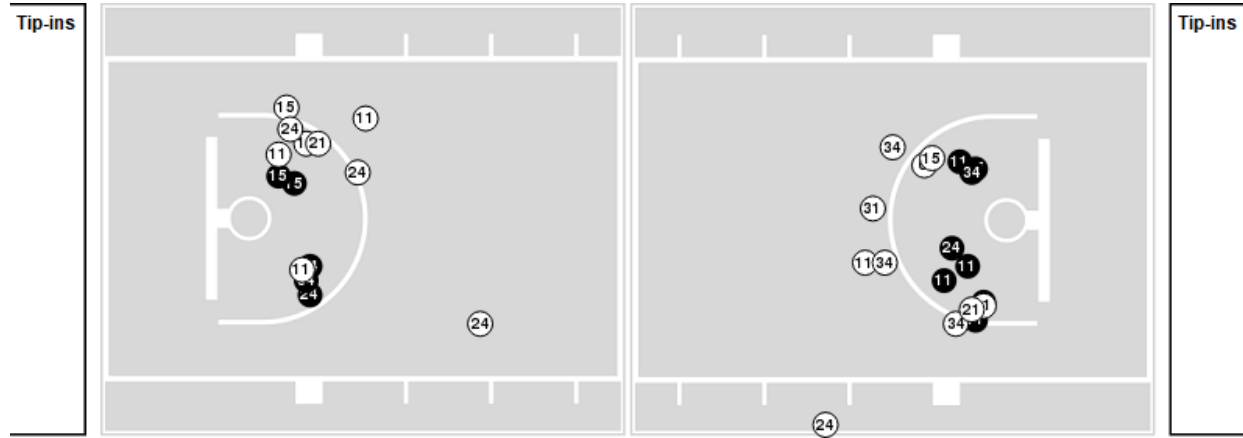
Players => 0, 1, 2, 3, 4, 11, 12, 13, 15, 21, 22, 23, 24, 30, 31, 32, 34, 44FG Types=>AllResults=>All

San Jose St.

All Field Goals



Blow Up Chart



● Made ○ Missed N - Player Number

San Jose St.	M/A	%
Field Goals	20/59	34
2 Points	13/38	34
3 Points	7/21	33
Free Throws	7/11	64

San Jose St.	M/A	%
Points in the Paint	26 (13 / 31)	42
Fast Break Points	0 (0/0)	0
Second Chance Points	9 (4/11)	36
Effective FG%	40	



Officials: Michol Murray, Anita Ortega, Kenneth Nash

New Mexico

Lineup	Quarter On	Time On	Quarter Off	Time Off	Time on Court	Score	Score Diff	Reb	Stl	Tov	Ass	PPP
3- Wilson N/ 12- Augmon A/ 22- Kohl C/ 30- Reus P/ 33- Cumber V/	1	10:00	1	05:29	04:31	10-8	2	6	0	2	1	1.0593
5- Langermann L/ 12- Augmon A/ 14- Joaquim H/ 30- Reus P/ 33- Cumber V/	1	05:29	1	03:05	02:24	5-0	5	2	1	0	1	1.2500
3- Wilson N/ 5- Langermann L/ 12- Augmon A/ 14- Joaquim H/ 30- Reus P/	1	03:05	1	01:46	01:19	3-0	3	1	0	1	0	1.5000
5- Langermann L/ 12- Augmon A/ 14- Joaquim H/ 30- Reus P/ 33- Cumber V/	1	01:46	1	00:09	01:36	0-4	-4	1	0	2	0	0.0000
5- Langermann L/ 12- Augmon A/ 22- Kohl C/ 30- Reus P/ 33- Cumber V/	1	00:09	2	06:06	04:03	10-5	5	3	1	0	3	1.4286
5- Langermann L/ 15- Bates J/ 22- Kohl C/ 30- Reus P/ 33- Cumber V/	2	06:06	2	04:42	01:24	1-3	-2	1	0	0	0	0.6944
5- Langermann L/ 10- Lauro P/ 12- Augmon A/ 22- Kohl C/ 33- Cumber V/	2	04:42	2	02:42	02:00	0-3	-3	2	0	2	0	0.0000
5- Langermann L/ 12- Augmon A/ 22- Kohl C/ 30- Reus P/ 33- Cumber V/	2	02:42	2	00:05	02:36	3-5	-2	1	1	1	1	0.7732
3- Wilson N/ 5- Langermann L/ 22- Kohl C/ 30- Reus P/ 33- Cumber V/	2	00:05	3	10:00	00:05	0-0	0	0	0	0	0	0.0000
3- Wilson N/ 12- Augmon A/ 22- Kohl C/ 30- Reus P/ 33- Cumber V/	3	10:00	3	05:14	04:46	11-6	5	3	0	0	2	1.5988
3- Wilson N/ 12- Augmon A/ 14- Joaquim H/ 30- Reus P/ 33- Cumber V/	3	05:14	3	03:10	02:04	3-2	1	2	0	1	1	0.7732
3- Wilson N/ 5- Langermann L/ 14- Joaquim H/ 30- Reus P/ 33- Cumber V/	3	03:10	3	03:10	00:00	0-0	0	0	0	0	0	0.0000
3- Wilson N/ 5- Langermann L/ 22- Kohl C/ 30- Reus P/ 33- Cumber V/	3	03:10	3	00:36	02:33	2-4	-2	2	1	1	0	0.5155
5- Langermann L/ 10- Lauro P/ 12- Augmon A/ 22- Kohl C/ 33- Cumber V/	3	00:36	3	00:21	00:15	2-0	2	0	0	0	0	2.2727
5- Langermann L/ 10- Lauro P/ 12- Augmon A/ 14- Joaquim H/ 33- Cumber V/	3	00:21	3	00:21	00:00	0-2	-2	0	0	0	0	0.0000
3- Wilson N/ 5- Langermann L/ 10- Lauro P/ 14- Joaquim H/ 33- Cumber V/	3	00:21	4	10:00	00:21	0-0	0	0	0	0	0	0.0000
3- Wilson N/ 5- Langermann L/ 10- Lauro P/ 12- Augmon A/ 14- Joaquim H/	4	10:00	4	05:19	04:41	7-0	7	4	1	1	1	0.8750
3- Wilson N/ 5- Langermann L/ 12- Augmon A/ 14- Joaquim H/ 30- Reus P/	4	05:19	4	04:03	01:16	0-2	-2	1	0	0	0	0.0000
3- Wilson N/ 12- Augmon A/ 22- Kohl C/ 30- Reus P/ 33- Cumber V/	4	04:03	4	00:40	03:22	6-4	2	4	1	1	1	1.2295
5- Langermann L/ 10- Lauro P/ 14- Joaquim H/ 15- Bates J/ 33- Cumber V/	4	00:40	4	00:40	00:00	2-0	2	0	0	0	0	2.2727
5- Langermann L/ 10- Lauro P/ 14- Joaquim H/ 15- Bates J/ 21- Curtis M/	4	00:40	4	00:00	00:40	0-6	-6	0	0	2	0	0.0000



San Jose St.

Lineup	Quarter On	Time On	Quarter Off	Time Off	Time on Court	Score	Score Diff	Reb	Stl	Tov	Ass	PPP
0- Summers S/ 11- Davis-Jones M/ 15- Anderson M/ 21- Kelemeni S/ 24- Moreland A/	1	10:00	1	05:29	04:31	8-10	-2	4	1	0	1	1.0152
0- Summers S/ 11- Davis-Jones M/ 15- Anderson M/ 21- Kelemeni S/ 31- Grizelj M/	1	05:29	1	03:53	01:36	0-2	-2	1	0	1	0	0.0000
11- Davis-Jones M/ 15- Anderson M/ 21- Kelemeni S/ 30- Ma S/ 31- Grizelj M/	1	03:53	1	03:05	00:48	0-3	-3	1	0	1	0	0.0000
11- Davis-Jones M/ 15- Anderson M/ 21- Kelemeni S/ 24- Moreland A/ 31- Grizelj M/	1	03:05	1	02:36	00:29	0-0	0	0	0	0	0	0.0000
11- Davis-Jones M/ 15- Anderson M/ 21- Kelemeni S/ 24- Moreland A/ 30- Ma S/	1	02:36	1	02:12	00:24	0-0	0	1	0	1	0	0.0000
0- Summers S/ 11- Davis-Jones M/ 21- Kelemeni S/ 24- Moreland A/ 30- Ma S/	1	02:12	1	01:46	00:26	0-3	-3	0	0	0	0	0.0000
0- Summers S/ 11- Davis-Jones M/ 21- Kelemeni S/ 30- Ma S/ 34- Smith S/	1	01:46	1	00:09	01:36	4-0	4	2	2	0	1	1.3333
0- Summers S/ 11- Davis-Jones M/ 15- Anderson M/ 30- Ma S/ 34- Smith S/	1	00:09	2	06:06	04:03	5-10	-5	4	0	1	1	0.8333
11- Davis-Jones M/ 15- Anderson M/ 21- Kelemeni S/ 30- Ma S/ 31- Grizelj M/	2	06:06	2	04:42	01:24	3-1	2	2	0	0	1	1.5000
11- Davis-Jones M/ 15- Anderson M/ 21- Kelemeni S/ 24- Moreland A/ 30- Ma S/	2	04:42	2	03:07	01:35	0-0	0	2	0	0	0	0.0000
11- Davis-Jones M/ 15- Anderson M/ 21- Kelemeni S/ 30- Ma S/ 34- Smith S/	2	03:07	2	02:42	00:25	3-0	3	0	0	0	1	3.0000
11- Davis-Jones M/ 15- Anderson M/ 21- Kelemeni S/ 30- Ma S/ 31- Grizelj M/	2	02:42	2	01:16	01:26	3-2	1	1	0	1	1	1.5000
11- Davis-Jones M/ 15- Anderson M/ 21- Kelemeni S/ 24- Moreland A/ 30- Ma S/	2	01:16	2	01:16	00:00	2-0	2	0	0	0	0	2.2727
0- Summers S/ 11- Davis-Jones M/ 21- Kelemeni S/ 24- Moreland A/ 30- Ma S/	2	01:16	3	10:00	01:16	0-1	-1	1	1	1	0	0.0000
0- Summers S/ 11- Davis-Jones M/ 15- Anderson M/ 21- Kelemeni S/ 34- Smith S/	3	10:00	3	08:25	01:35	0-8	-8	0	0	1	0	0.0000
0- Summers S/ 11- Davis-Jones M/ 15- Anderson M/ 30- Ma S/ 31- Grizelj M/	3	08:25	3	06:30	01:55	2-2	0	0	0	0	0	1.0000
11- Davis-Jones M/ 15- Anderson M/ 21- Kelemeni S/ 24- Moreland A/ 30- Ma S/	3	06:30	3	05:43	00:47	2-1	1	2	0	0	1	2.0000
11- Davis-Jones M/ 15- Anderson M/ 21- Kelemeni S/ 30- Ma S/ 34- Smith S/	3	05:43	3	05:23	00:20	2-0	2	1	0	0	0	2.2727
0- Summers S/ 11- Davis-Jones M/ 15- Anderson M/ 21- Kelemeni S/ 30- Ma S/	3	05:23	3	03:10	02:13	2-3	-1	2	0	1	1	0.5000
0- Summers S/ 11- Davis-Jones M/ 21- Kelemeni S/ 24- Moreland A/ 30- Ma S/	3	03:10	3	02:41	00:29	0-0	0	0	0	0	0	0.0000
0- Summers S/ 11- Davis-Jones M/ 21- Kelemeni S/ 30- Ma S/ 34- Smith S/	3	02:41	3	00:36	02:04	4-2	2	3	1	2	0	1.0000
0- Summers S/ 11- Davis-Jones M/ 21- Kelemeni S/ 24- Moreland A/ 30- Ma S/	3	00:36	3	00:36	00:00	0-0	0	0	0	0	0	0.0000
0- Summers S/ 11- Davis-Jones M/ 15- Anderson M/ 21- Kelemeni S/ 24- Moreland A/	3	00:36	4	08:41	01:55	2-4	-2	1	0	1	0	0.6944
0- Summers S/ 15- Anderson M/ 21- Kelemeni S/ 30- Ma S/ 34- Smith S/	4	08:41	4	07:11	01:30	0-5	-5	1	0	0	0	0.0000
0- Summers S/ 11- Davis-Jones M/ 15- Anderson M/ 30- Ma S/ 34- Smith S/	4	07:11	4	06:30	00:41	0-0	0	0	1	1	0	0.0000
11- Davis-Jones M/ 15- Anderson M/ 21- Kelemeni S/ 30- Ma S/ 34- Smith S/	4	06:30	4	05:19	01:11	0-0	0	3	0	1	0	0.0000
11- Davis-Jones M/ 15- Anderson M/ 21- Kelemeni S/ 24- Moreland A/ 30- Ma S/	4	05:19	4	03:39	01:40	4-0	4	3	0	2	2	1.1628
11- Davis-Jones M/ 15- Anderson M/ 21- Kelemeni S/ 30- Ma S/ 34- Smith S/	4	03:39	4	01:58	01:41	0-6	-6	2	0	1	0	0.0000
0- Summers S/ 11- Davis-Jones M/ 21- Kelemeni S/ 30- Ma S/ 34- Smith S/	4	01:58	4	00:40	01:17	2-0	2	1	0	0	1	1.0000
0- Summers S/ 11- Davis-Jones M/ 15- Anderson M/ 21- Kelemeni S/ 30- Ma S/	4	00:40	4	00:00	00:40	6-2	4	3	1	0	2	3.0000



New Mexico at San Jose St.

01/31/24 Provident Credit Union Event Center, San Jose
2023-24 Women's Basketball

Game Time: 11:00 AM

Game Duration: 2:05

Attendance: 220

Officials: Michol Murray, Anita Ortega, Kenneth Nash

New Mexico

Lineup	Time	Score	Score Diff	Pts/Min	Reb	Stl	Tov	Ass	PPP
3- Wilson N/ 12- Augmon A/ 22- Kohl C/ 30- Reus P/ 33- Cumber V/	12:39	27-18	9	2.1330	13	1	3	4	1.2736
5- Langermann L/ 12- Augmon A/ 22- Kohl C/ 30- Reus P/ 33- Cumber V/	06:40	13-10	3	1.9500	4	2	1	4	1.1949
3- Wilson N/ 5- Langermann L/ 10- Lauro P/ 12- Augmon A/ 14- Joaquim H/	04:41	7-0	7	1.4947	4	1	1	1	0.8750
5- Langermann L/ 12- Augmon A/ 14- Joaquim H/ 30- Reus P/ 33- Cumber V/	04:00	5-4	1	1.2490	3	1	2	1	0.7143
3- Wilson N/ 5- Langermann L/ 22- Kohl C/ 30- Reus P/ 33- Cumber V/	02:39	2-4	-2	0.7542	2	1	1	0	0.4098
3- Wilson N/ 5- Langermann L/ 12- Augmon A/ 14- Joaquim H/ 30- Reus P/	02:35	3-2	1	1.1613	2	0	1	0	0.7500
5- Langermann L/ 10- Lauro P/ 12- Augmon A/ 22- Kohl C/ 33- Cumber V/	02:15	2-3	-1	0.8856	2	0	2	0	0.4098
3- Wilson N/ 12- Augmon A/ 14- Joaquim H/ 30- Reus P/ 33- Cumber V/	02:04	3-2	1	1.4516	2	0	1	1	0.7732
5- Langermann L/ 15- Bates J/ 22- Kohl C/ 30- Reus P/ 33- Cumber V/	01:24	1-3	-2	0.7143	1	0	0	0	0.6944
5- Langermann L/ 10- Lauro P/ 14- Joaquim H/ 15- Bates J/ 21- Curtis M/	00:40	0-6	-6	0.0000	0	0	2	0	0.0000
3- Wilson N/ 5- Langermann L/ 10- Lauro P/ 14- Joaquim H/ 33- Cumber V/	00:21	0-0	0	0.0000	0	0	0	0	0.0000
3- Wilson N/ 5- Langermann L/ 14- Joaquim H/ 30- Reus P/ 33- Cumber V/	00:00	0-0	0	NaN	0	0	0	0	0.0000
5- Langermann L/ 10- Lauro P/ 12- Augmon A/ 14- Joaquim H/ 33- Cumber V/	00:00	0-2	-2	NaN	0	0	0	0	0.0000
5- Langermann L/ 10- Lauro P/ 14- Joaquim H/ 15- Bates J/ 33- Cumber V/	00:00	2-0	2	∞	0	0	0	0	2.2727



New Mexico at San Jose St.

01/31/24 Provident Credit Union Event Center, San Jose
2023-24 Women's Basketball

Game Time: 11:00 AM

Game Duration: 2:05

Attendance: 220

Officials: Michol Murray, Anita Ortega, Kenneth Nash

San Jose St.

Lineup	Time	Score	Score Diff	Pts/Min	Reb	Stl	Tov	Ass	PPP
0- Summers S/ 11- Davis-Jones M/ 15- Anderson M/ 21- Kelemeni S/ 24- Moreland A/	06:26	10-14	-4	1.5516	5	1	1	1	0.9294
0- Summers S/ 11- Davis-Jones M/ 21- Kelemeni S/ 30- Ma S/ 34- Smith S/	04:58	10-2	8	2.0134	6	3	2	2	1.1111
0- Summers S/ 11- Davis-Jones M/ 15- Anderson M/ 30- Ma S/ 34- Smith S/	04:44	5-10	-5	1.0534	4	1	2	1	0.6250
11- Davis-Jones M/ 15- Anderson M/ 21- Kelemeni S/ 24- Moreland A/ 30- Ma S/	04:26	8-1	7	1.8045	8	0	3	3	0.8584
11- Davis-Jones M/ 15- Anderson M/ 21- Kelemeni S/ 30- Ma S/ 31- Grizelj M/	03:38	6-6	0	1.6514	4	0	2	2	1.0000
11- Davis-Jones M/ 15- Anderson M/ 21- Kelemeni S/ 30- Ma S/ 34- Smith S/	03:37	5-6	-1	1.3825	6	0	2	1	0.8503
0- Summers S/ 11- Davis-Jones M/ 15- Anderson M/ 21- Kelemeni S/ 30- Ma S/	02:53	8-5	3	2.7666	5	1	1	3	1.3333
0- Summers S/ 11- Davis-Jones M/ 21- Kelemeni S/ 24- Moreland A/ 30- Ma S/	02:11	0-4	-4	0.0000	1	1	1	0	0.0000
0- Summers S/ 11- Davis-Jones M/ 15- Anderson M/ 30- Ma S/ 31- Grizelj M/	01:55	2-2	0	1.0435	0	0	0	0	1.0000
0- Summers S/ 11- Davis-Jones M/ 15- Anderson M/ 21- Kelemeni S/ 31- Grizelj M/	01:36	0-2	-2	0.0000	1	0	1	0	0.0000
0- Summers S/ 11- Davis-Jones M/ 15- Anderson M/ 21- Kelemeni S/ 34- Smith S/	01:35	0-8	-8	0.0000	0	0	1	0	0.0000
0- Summers S/ 15- Anderson M/ 21- Kelemeni S/ 30- Ma S/ 34- Smith S/	01:30	0-5	-5	0.0000	1	0	0	0	0.0000
11- Davis-Jones M/ 15- Anderson M/ 21- Kelemeni S/ 24- Moreland A/ 31- Grizelj M/	00:29	0-0	0	0.0000	0	0	0	0	0.0000