



Officials: Michol Murray, Benny Luna, Nicole Leon

San Jose St. - 51

Record: 6-18 (1-11)

NO.	Name	Min	FG			Rebounds			Fouls		TP	AS	TO	ST	Blocks		+/-
			M-A	M-A	M-A	OR	DR	TOT	PF	FD					BS	BA	
15	Maya Anderson	F 32:44	0-6	0-1	2-2	0	2	2	4	3	2	4	0	2	0	0	-10
23	Alani Fluker	F 28:27	0-2	0-0	0-0	2	3	5	2	0	0	3	3	0	0	-13	
24	Amhyia Moreland	F 19:18	8-13	0-0	3-3	1	3	4	4	2	19	0	2	0	2	-8	
0	Sydni Summers	G 33:32	3-9	3-7	0-0	1	4	5	1	0	9	3	2	0	1	-15	
30	Sabrina Ma	G 33:01	5-13	2-8	0-0	1	2	3	4	4	12	3	3	0	1	-21	
31	Mia Grizelj	20:11	0-2	0-2	0-0	0	2	2	2	0	0	2	1	0	0	-15	
21	Sofia Kelemeni	27:52	2-7	1-4	0-0	2	3	5	5	0	5	2	4	2	1	-18	
3	Nailea Nicholas	01:20	0-0	0-0	0-0	0	1	1	0	0	0	0	1	0	0	-4	
34	Semaj Smith	03:35	2-2	0-0	0-0	0	1	1	1	0	4	0	1	0	1	-1	
Team						0	6	6			0		2				
<b>Totals</b>			20-54	6-22	5-5	7	27	34	23	9	51	17	19	4	5	1	-21

Technical Fouls: Kelemeni 4<sup>th</sup> 3:04

Shooting By Period		
1 <sup>st</sup> FG%	3-14	21.4%
3PT%	2-9	22.2%
FT%	4-4	100%
2 <sup>nd</sup> FG%	5-15	33.3%
3PT%	1-7	14.3%
FT%	0-0	0%
3 <sup>rd</sup> FG%	4-12	33.3%
3PT%	1-2	50.0%
FT%	0-0	0%
4 <sup>th</sup> FG%	8-13	61.5%
3PT%	2-4	50.0%
FT%	1-1	100%
GM FG%	20-54	37.0%
3PT%	6-22	27.3%
FT%	5-5	100.0%

Dead Ball Rebounds: 2, 0

New Mexico - 72

Record: 18-8 (9-4)

NO.	Name	Min	FG			Rebounds			Fouls		TP	AS	TO	ST	Blocks		+/-
			M-A	M-A	M-A	OR	DR	TOT	PF	FD					BS	BA	
30	Paula Reus	F 34:26	3-9	1-3	2-2	1	4	5	2	3	9	4	1	0	0	25	
22	Charlotte Kohl	C 17:35	4-7	0-1	0-0	2	1	3	0	2	8	1	0	1	0	9	
3	Nyah Wilson	G 30:50	5-16	3-4	3-4	1	2	3	1	4	16	2	3	1	1	13	
12	Aniyah Augmon	G 32:31	3-10	2-5	4-4	0	5	5	1	7	12	5	3	1	0	29	
33	Vianè Cumber	G 32:44	5-11	3-7	4-5	0	4	4	1	3	17	2	0	1	0	19	
5	Lara Langermann	20:47	0-1	0-1	0-0	0	0	0	2	1	0	0	0	1	0	5	
14	Hulda Joaquim	21:20	2-4	0-0	0-0	5	6	11	2	1	4	1	0	0	0	11	
10	Paris Lauro	03:40	0-2	0-0	0-0	1	0	1	0	0	0	1	0	0	0	-5	
1	Nahawa Diarra Berthe	02:28	0-0	0-0	0-0	1	0	1	0	1	0	0	0	0	0	-1	
2	Natalia Chavez	02:34	1-1	1-1	0-0	0	0	0	0	0	3	1	0	0	0	-1	
21	Mackenzie Curtis	01:05	1-2	1-2	0-0	0	0	0	0	0	3	0	0	0	0	1	
Team						2	3	5			0		1				
<b>Totals</b>			24-63	11-24	13-15	13	25	38	9	22	72	17	8	5	1	5	21

Technical Fouls: NONE

Shooting By Period		
1 <sup>st</sup> FG%	5-13	38.5%
3PT%	3-5	60.0%
FT%	4-4	100%
2 <sup>nd</sup> FG%	6-12	50.0%
3PT%	2-4	50.0%
FT%	2-3	66.7%
3 <sup>rd</sup> FG%	7-19	36.8%
3PT%	3-8	37.5%
FT%	2-2	100%
4 <sup>th</sup> FG%	6-19	31.6%
3PT%	3-7	42.9%
FT%	5-6	83.3%
GM FG%	24-63	38.1%
3PT%	11-24	45.8%
FT%	13-15	86.7%

Dead Ball Rebounds: 1, 0

	SJSU	UNM
Biggest lead	2 (1 <sup>st</sup> 9:43)	23 (4 <sup>th</sup> 0:41)
Best Scoring Run	6 (1 <sup>st</sup> 0:06)	11 (1 <sup>st</sup> 3:14)
Lead Changes	1	
Times Tied	1	
Time with Lead	02:35	35:41

Points from	SJSU	UNM
Turnovers	9	20
Paint	22	24
Second Chance	6	15
Fast Breaks	2	4
Bench	9	10

	Period by Period Scoring				
	1st	2nd	3rd	4th	TOT
SJSU	12	11	9	19	51
UNM	17	16	19	20	72



**San Jose St. at New Mexico**

02/14/24 The Pit, Albuquerque  
2023-24 Women's Basketball

**Game Time:** 7:00 PM

**Game Duration:** 1:41

**Attendance:** 4,807

**Officials:** Michol Murray, Benny Luna, Nicole Leon

**Period 1**

**Quarter Starters:**

<b>UNM</b>	3 Wilson N	12 Augmon A	22 Kohl C	30 Reus P	33 Cumber V
<b>SJSU</b>	0 Summers S	15 Anderson M	23 Fluker A	24 Moreland A	30 Ma S

Game Time	UNM	Score	Diff	SJSU
10:00	22 KOHL C jumpball lost			24 MORELAND A jumpball won
09:43		<b>0-2</b>	<b>-2</b>	24 MORELAND A 2pt FG outside the paint, turnaround jump shot made (2)
09:43				0 SUMMERS S assist (1)
09:15	3 WILSON N 2pt FG in the paint, layup missed			
09:13				30 MA S defensive rebound (1)
09:10				0 SUMMERS S 3pt FG , jump shot missed
09:07	defensive rebound (1)			
08:50	12 AUGMON A 2pt FG in the paint, layup missed			
08:48				23 FLUKER A defensive rebound (1)
08:21				30 MA S turnover bad pass (1)
08:09	3 WILSON N 2pt FG from turnover in the paint, layup missed			
08:05	22 KOHL C offensive rebound (1)			
08:04	22 KOHL C 2pt FG from turnover second chance in the paint, layup missed			
08:02				24 MORELAND A defensive rebound (1)
07:56				0 SUMMERS S 2pt FG in the paint, layup blocked
07:56	3 WILSON N block (1)			
07:56	defensive rebound (3)			
07:56				24 MORELAND A substitution out
07:56				31 GRIZELJ M substitution in
07:47	30 REUS P foul offensive (1 - 1)			30 MA S foul drawn (1)
07:47	30 REUS P turnover offensive (1)			
07:17				30 MA S 3pt FG from turnover, jump shot missed
07:14	12 AUGMON A defensive rebound (1)			
07:08	30 REUS P 2pt FG in the paint, driving layup made (2)	<b>2-2</b>	<b>0</b>	
06:47				31 GRIZELJ M 3pt FG , jump shot missed
06:44	33 CUMBER V defensive rebound (1)			
06:44	jump ball situation			
06:44				0 SUMMERS S substitution out
06:44				21 KELEMENI S substitution in
06:35	33 CUMBER V 3pt FG , jump shot missed			
06:32				31 GRIZELJ M defensive rebound (1)
06:08				23 FLUKER A 2pt FG in the paint, layup missed
06:03				21 KELEMENI S offensive rebound (1)
05:54				21 KELEMENI S 3pt FG second chance, jump shot missed
05:51	12 AUGMON A defensive rebound (2)			
05:46	12 AUGMON A foul drawn (1)			30 MA S foul personal (1 - 1)
05:41	12 AUGMON A 3pt FG , jump shot made (3)	<b>5-2</b>	<b>3</b>	
05:41	30 REUS P assist (1)			
05:27				15 ANDERSON M 2pt FG in the paint, layup missed
05:25	12 AUGMON A defensive rebound (3)			
05:25	12 AUGMON A foul drawn (2)			21 KELEMENI S foul personal (1 - 2)



**San Jose St. at New Mexico**

02/14/24 The Pit, Albuquerque  
2023-24 Women's Basketball

**Game Time:** 7:00 PM  
**Game Duration:** 1:41  
**Attendance:** 4,807

**Officials:** Michol Murray, Benny Luna, Nicole Leon

Game Time	UNM	Score	Diff	SJSU
05:11	22 KOHL C 2pt FG outside the paint, turnaround jump shot made (2)	7-2	5	
05:11	12 AUGMON A assist (1)			
04:56	12 AUGMON A foul drawn (3)			31 GRIZELJ M foul offensive (1 - 3)
04:56				31 GRIZELJ M turnover offensive (1)
04:56	Timeout media			
04:56	3 WILSON N substitution out			
04:56	22 KOHL C substitution out			
04:56	5 LANGERMANN L substitution in			
04:56	14 JOAQUIM H substitution in			
04:56				15 ANDERSON M substitution out
04:56				31 GRIZELJ M substitution out
04:56				0 SUMMERS S substitution in
04:56				24 MORELAND A substitution in
04:36	30 REUS P foul drawn (1)			21 KELEMENI S foul personal (2 - 4)
04:22	30 REUS P 3pt FG from turnover, jump shot missed			
04:20				defensive rebound (6)
04:20				21 KELEMENI S substitution out
04:20				15 ANDERSON M substitution in
04:02				30 MA S 3pt FG , jump shot missed
04:00	30 REUS P defensive rebound (1)			
04:00	30 REUS P foul drawn (2)			24 MORELAND A foul personal (1 - 5)
04:00	30 REUS P free throw 1 - 2 made (3)	8-2	6	
04:00	30 REUS P free throw 2 - 2 made (4)	9-2	7	
03:43				30 MA S 2pt FG in the paint, jump shot missed
03:40				30 MA S offensive rebound (2)
03:22				0 SUMMERS S 3pt FG second chance, jump shot missed
03:19	14 JOAQUIM H defensive rebound (1)			
03:14	12 AUGMON A foul drawn (4)			24 MORELAND A foul shooting (2 - 6)
03:14	12 AUGMON A free throw fast break 1 - 2 made (4)	10-2	8	
03:14	12 AUGMON A free throw fast break 2 - 2 made (5)	11-2	9	
02:52	14 JOAQUIM H foul shooting (1 - 2)			24 MORELAND A foul drawn (1)
02:52		11-3	8	24 MORELAND A free throw 1 - 2 made (3)
02:52		11-4	7	24 MORELAND A free throw 2 - 2 made (4)
02:52				23 FLUKER A substitution out
02:52				24 MORELAND A substitution out
02:52				21 KELEMENI S substitution in
02:52				31 GRIZELJ M substitution in
02:32	30 REUS P 2pt FG in the paint, layup missed			
02:29				0 SUMMERS S defensive rebound (1)
02:27	33 CUMBER V foul shooting (1 - 3)			15 ANDERSON M foul drawn (1)
02:27		11-5	6	15 ANDERSON M free throw fast break 1 - 2 made (1)
02:27		11-6	5	15 ANDERSON M free throw fast break 2 - 2 made (2)
02:15	30 REUS P 3pt FG , jump shot made (7)	14-6	8	
02:15	12 AUGMON A assist (2)			
01:54	12 AUGMON A foul personal (1 - 4)			30 MA S foul drawn (2)
01:54	12 AUGMON A substitution out			
01:54	3 WILSON N substitution in			
01:37	33 CUMBER V steal (1)			0 SUMMERS S turnover bad pass (1)



Official Basketball Play by Play - 1st Period

**San Jose St. at New Mexico**

02/14/24 The Pit, Albuquerque  
2023-24 Women's Basketball

**Game Time:** 7:00 PM  
**Game Duration:** 1:41  
**Attendance:** 4,807

**Officials:** Michol Murray, Benny Luna, Nicole Leon

Game Time	UNM	Score	Diff	SJSU
01:31	3 WILSON N 2pt FG from turnover in the paint, jump shot missed			
01:28	3 WILSON N offensive rebound (1)			
01:26	33 CUMBER V 3pt FG from turnover second chance, jump shot made (3)	<b>17-6</b>	<b>11</b>	
01:26	3 WILSON N assist (1)			
01:05				30 MA S 3pt FG , jump shot missed
01:01				21 KELEMENI S offensive rebound (2)
00:59		<b>17-9</b>	<b>8</b>	0 SUMMERS S 3pt FG second chance, jump shot made (3)
00:59				21 KELEMENI S assist (1)
00:36	3 WILSON N turnover bad pass (1)			21 KELEMENI S steal (1)
00:06		<b>17-12</b>	<b>5</b>	21 KELEMENI S 3pt FG from turnover, jump shot made (3)
00:06				31 GRIZELJ M assist (1)
<b>END OF PERIOD</b>				
<b>UNM 17-12 SJSU</b>				



San Jose St. at New Mexico

02/14/24 The Pit, Albuquerque  
2023-24 Women's Basketball

Game Time: 7:00 PM  
Game Duration: 1:41  
Attendance: 4,807

Officials: Michol Murray, Benny Luna, Nicole Leon

San Jose St. - 12

NO.	Name	F	Min	FG			Rebounds			Fouls		TP	AS	TO	ST	Blocks		+/-
				M-A	M-A	M-A	OR	DR	TOT	PF	FD					BS	BA	
15	Maya Anderson	F	09:24	0-1	0-0	2-2	0	0	0	0	1	2	0	0	0	0	0	-5
23	Alani Fluker	F	07:08	0-1	0-0	0-0	0	1	1	0	0	0	0	0	0	0	0	-7
24	Amhyia Moreland	F	04:08	1-1	0-0	2-2	0	1	1	2	1	4	0	0	0	0	0	0
0	Sydni Summers	G	08:12	1-4	1-3	0-0	0	1	1	0	0	3	1	1	0	0	1	0
30	Sabrina Ma	G	10:00	0-4	0-3	0-0	1	1	2	1	2	0	0	1	0	0	0	-5
31	Mia Grizelj		05:52	0-1	0-1	0-0	0	1	1	1	0	0	1	1	0	0	0	-5
21	Sofia Kelemen		05:16	1-2	1-2	0-0	2	0	2	2	0	3	1	0	1	0	0	-3
Team							0	1	1			0		0				
<b>Totals</b>				3-14	2-9	4-4	3	6	9	6	4	12	3	3	1	0	1	-5

Shooting By Period		
1st FG%	3-14	21.4%
3PT%	2-9	22.2%
FT%	4-4	100%
GM FG%	3-14	21.4%
3PT%	2-9	22.2%
FT%	4-4	100.0%

Dead Ball Rebounds: 0, 0

Technical Fouls::NONE

New Mexico - 17

NO.	Name	F	Min	FG			Rebounds			Fouls		TP	AS	TO	ST	Blocks		+/-
				M-A	M-A	M-A	OR	DR	TOT	PF	FD					BS	BA	
30	Paula Reus	F	10:00	2-4	1-2	2-2	0	1	1	1	2	7	1	1	0	0	0	5
22	Charlotte Kohl	C	05:04	1-2	0-0	0-0	1	0	1	0	0	2	0	0	0	0	0	5
3	Nyah Wilson	G	06:58	0-3	0-0	0-0	1	0	1	0	0	0	1	1	0	1	0	2
12	Aniyah Augmon	G	08:06	1-2	1-1	2-2	0	3	3	1	4	5	2	0	0	0	0	8
33	Vianè Cumber	G	10:00	1-2	1-2	0-0	0	1	1	1	0	3	0	0	1	0	0	5
5	Lara Langermann		04:56	0-0	0-0	0-0	0	0	0	0	0	0	0	0	0	0	0	0
14	Hulda Joaquim		04:56	0-0	0-0	0-0	0	1	1	1	0	0	0	0	0	0	0	0
Team							0	2	2			0		0				
<b>Totals</b>				5-13	3-5	4-4	2	8	10	4	6	17	4	2	1	1	0	5

Shooting By Period		
1st FG%	5-13	38.5%
3PT%	3-5	60.0%
FT%	4-4	100%
GM FG%	5-13	38.5%
3PT%	3-5	60.0%
FT%	4-4	100.0%

Dead Ball Rebounds: 0, 0

Technical Fouls::NONE

	SJSU	UNM
Biggest lead	2 (1 <sup>st</sup> 9:43)	11 (1 <sup>st</sup> 1:26)
Best Scoring Run	6 (1 <sup>st</sup> 0:06)	11 (1 <sup>st</sup> 3:14)
Lead Changes	1	
Times Tied	1	
Time with Lead	02:35	05:41

Points from	SJSU	UNM
Turnovers	3	3
Paint	0	2
Second Chance	3	3
Fast Breaks	2	2
Bench	3	0

	Period by Period Scoring				
	1st	2nd	3rd	4th	TOT
SJSU	12	11	9	19	51
UNM	17	16	19	20	72



**San Jose St. at New Mexico**

02/14/24 The Pit, Albuquerque  
2023-24 Women's Basketball

Game Time: 7:00 PM

Game Duration: 1:41

Attendance: 4,807

Officials: Michol Murray, Benny Luna, Nicole Leon

**Period 2**

**Quarter Starters:**

<b>UNM</b>	3 Wilson N	5 Langermann L	12 Augmon A	22 Kohl C	30 Reus P
<b>SJSU</b>	0 Summers S	3 Nicholas N	21 Kelemeni S	30 Ma S	34 Smith S

Game Time	UNM	Score	Diff	SJSU
10:00	14 JOAQUIM H substitution out			
10:00	33 CUMBER V substitution out			
10:00	12 AUGMON A substitution in			
10:00	22 KOHL C substitution in			
10:00				15 ANDERSON M substitution out
10:00				31 GRIZELJ M substitution out
10:00				3 NICHOLAS N substitution in
10:00				34 SMITH S substitution in
09:46				21 KELEMENI S turnover travel (1)
09:46				34 SMITH S substitution out
09:46				24 MORELAND A substitution in
09:33	3 WILSON N 2pt FG from turnover in the paint, turnaround jump shot missed			
09:31				3 NICHOLAS N defensive rebound (1)
09:27	3 WILSON N steal (1)			21 KELEMENI S turnover bad pass (2)
09:23	3 WILSON N 2pt FG fast break from turnover in the paint, layup made (2)	<b>19-12</b>	<b>7</b>	
08:59	22 KOHL C steal (1)			3 NICHOLAS N turnover bad pass (1)
08:43	3 WILSON N 2pt FG from turnover in the paint, jump shot made (4)	<b>21-12</b>	<b>9</b>	
08:40				Timeout 30 Sec
08:40				Timeout media
08:40				3 NICHOLAS N substitution out
08:40				30 MA S substitution out
08:40				15 ANDERSON M substitution in
08:40				23 FLUKER A substitution in
08:33				21 KELEMENI S 3pt FG , jump shot missed
08:30	30 REUS P defensive rebound (2)			
08:24	3 WILSON N 3pt FG , jump shot made (7)	<b>24-12</b>	<b>12</b>	
08:24	12 AUGMON A assist (3)			
07:55				15 ANDERSON M 2pt FG in the paint, layup missed
07:52	30 REUS P defensive rebound (3)			
07:25	12 AUGMON A turnover bad pass (1)			15 ANDERSON M steal (1)
07:06		<b>24-14</b>	<b>10</b>	24 MORELAND A 2pt FG from turnover in the paint, layup made (6)
07:06				21 KELEMENI S assist (2)
06:45	12 AUGMON A 2pt FG in the paint, layup missed			
06:43				24 MORELAND A defensive rebound (2)
06:41				24 MORELAND A turnover bad pass (1)
06:41	30 REUS P substitution out			
06:41	33 CUMBER V substitution in			
06:41				24 MORELAND A substitution out
06:41				31 GRIZELJ M substitution in
06:26	33 CUMBER V 2pt FG from turnover in the paint, layup made (5)	<b>26-14</b>	<b>12</b>	



**San Jose St. at New Mexico**

02/14/24 The Pit, Albuquerque  
2023-24 Women's Basketball

**Game Time:** 7:00 PM  
**Game Duration:** 1:41  
**Attendance:** 4,807

**Officials:** Michol Murray, Benny Luna, Nicole Leon

Game Time	UNM	Score	Diff	SJSU
06:26	33 CUMBER V foul drawn (1)			21 KELEMENI S foul shooting (3 - 1)
06:26				21 KELEMENI S substitution out
06:26				30 MA S substitution in
06:26	33 CUMBER V free throw 1 - 1 made (6)	<b>27-14</b>	<b>13</b>	
06:26	22 KOHL C substitution out			
06:26	14 JOAQUIM H substitution in			
05:55				30 MA S 2pt FG in the paint, jump shot missed
05:55				offensive dead ball rebound (1)
05:55				turnover shot clock (8)
05:24	turnover shot clock (4)			
05:13	5 LANGERMANN L foul personal (1 - 1)			15 ANDERSON M foul drawn (2)
05:08		<b>27-16</b>	<b>11</b>	30 MA S 2pt FG from turnover in the paint, hook shot made (2)
05:08				23 FLUKER A assist (1)
04:47	3 WILSON N foul drawn (1)			15 ANDERSON M foul personal (1 - 2)
04:47	5 LANGERMANN L substitution out			
04:47	30 REUS P substitution in			
04:47				15 ANDERSON M substitution out
04:47				31 GRIZELJ M substitution out
04:47				21 KELEMENI S substitution in
04:47				24 MORELAND A substitution in
04:35	33 CUMBER V 3pt FG , jump shot made (9)	<b>30-16</b>	<b>14</b>	
04:35	12 AUGMON A assist (4)			
04:17		<b>30-18</b>	<b>12</b>	24 MORELAND A 2pt FG in the paint, turnaround jump shot made (8)
04:17				0 SUMMERS S assist (2)
04:05	12 AUGMON A 2pt FG in the paint, layup missed			
04:02				0 SUMMERS S defensive rebound (2)
03:58				0 SUMMERS S 2pt FG in the paint, layup missed
03:56				23 FLUKER A offensive rebound (2)
03:56	14 JOAQUIM H substitution out			
03:56	22 KOHL C substitution in			
03:52				30 MA S 3pt FG second chance, jump shot missed
03:49				23 FLUKER A offensive rebound (3)
03:35	30 REUS P foul drawn (3)			23 FLUKER A foul offensive (1 - 3)
03:35				23 FLUKER A turnover offensive (1)
03:15	22 KOHL C 3pt FG from turnover, jump shot missed			
03:12				0 SUMMERS S defensive rebound (3)
03:03				30 MA S 3pt FG , jump shot missed
03:02	defensive rebound (13)			
03:02				24 MORELAND A substitution out
03:02				34 SMITH S substitution in
03:02				30 MA S substitution out
03:02				15 ANDERSON M substitution in
02:44	22 KOHL C 2pt FG in the paint, layup made (4)	<b>32-18</b>	<b>14</b>	
02:44	33 CUMBER V assist (1)			
02:27				15 ANDERSON M 2pt FG in the paint, layup missed
02:24	12 AUGMON A defensive rebound (4)			
02:14	12 AUGMON A turnover lost ball (2)			21 KELEMENI S steal (2)
02:09				15 ANDERSON M 3pt FG from turnover, jump shot missed



**San Jose St. at New Mexico**

02/14/24 The Pit, Albuquerque  
2023-24 Women's Basketball

**Game Time:** 7:00 PM  
**Game Duration:** 1:41  
**Attendance:** 4,807

**Officials:** Michol Murray, Benny Luna, Nicole Leon

Game Time	UNM	Score	Diff	SJSU
02:06	3 WILSON N defensive rebound (2)			
02:00	3 WILSON N 2pt FG in the paint, layup missed			
01:59				defensive rebound (16)
01:59	12 AUGMON A substitution out			
01:59	5 LANGERMANN L substitution in			
01:59				0 SUMMERS S substitution out
01:59				34 SMITH S substitution out
01:59				30 MA S substitution in
01:59				31 GRIZELJ M substitution in
01:34				30 MA S 3pt FG , jump shot missed
01:30	33 CUMBER V defensive rebound (2)			
01:24	33 CUMBER V 3pt FG , jump shot missed			
01:22				defensive rebound (17)
01:22	22 KOHL C substitution out			
01:22	14 JOAQUIM H substitution in			
01:12	30 REUS P foul personal (2 - 2)			15 ANDERSON M foul drawn (3)
01:12				23 FLUKER A substitution out
01:12				0 SUMMERS S substitution in
01:12	30 REUS P substitution out			
01:12	10 LAURO P substitution in			
01:08		<b>32-21</b>	<b>11</b>	0 SUMMERS S 3pt FG , jump shot made (6)
01:08				15 ANDERSON M assist (1)
00:51	3 WILSON N foul drawn (2)			31 GRIZELJ M foul shooting (2 - 4)
00:51	3 WILSON N free throw 1 - 2 missed			
00:51	offensive dead ball rebound (1)			
00:51	3 WILSON N free throw 2 - 2 made (8)	<b>33-21</b>	<b>12</b>	
00:41		<b>33-23</b>	<b>10</b>	30 MA S 2pt FG in the paint, layup made (4)
00:41				31 GRIZELJ M assist (2)
00:06	3 WILSON N turnover bad pass (2)			15 ANDERSON M steal (2)
00:02	5 LANGERMANN L foul personal (2 - 3)			30 MA S foul drawn (3)
00:00				31 GRIZELJ M 3pt FG from turnover, jump shot missed
00:00	3 WILSON N defensive rebound (3)			
<b>END OF PERIOD</b>				
<b>UNM 33-23 SJSU</b>				





San Jose St. at New Mexico

02/14/24 The Pit, Albuquerque  
2023-24 Women's Basketball

Game Time: 7:00 PM  
Game Duration: 1:41  
Attendance: 4,807

Officials: Michol Murray, Benny Luna, Nicole Leon

San Jose St. - 11

NO.	Name	F	Min	FG			Rebounds			Fouls		TP	AS	TO	ST	Blocks		+/-
				M-A	3P	FT	OR	DR	TOT	PF	FD					BS	BA	
15	Maya Anderson	F	06:55	0-3	0-1	0-0	0	0	0	1	2	0	1	0	2	0	0	0
23	Alani Fluker	F	07:28	0-0	0-0	0-0	2	0	2	1	0	0	1	1	0	0	0	-5
24	Amhyia Moreland	F	04:50	2-2	0-0	0-0	0	1	1	0	0	4	0	1	0	0	0	-6
0	Sydni Summers	G	09:13	1-2	1-1	0-0	0	2	2	0	0	3	1	0	0	0	0	-5
30	Sabrina Ma	G	06:43	2-6	0-3	0-0	0	0	0	0	1	4	0	0	0	0	0	
3	Nailea Nicholas		01:20	0-0	0-0	0-0	0	1	1	0	0	0	0	1	0	0	0	-4
34	Semaj Smith		01:17	0-0	0-0	0-0	0	0	0	0	0	0	0	0	0	0	0	-2
31	Mia Grizelj		03:53	0-1	0-1	0-0	0	0	0	1	0	0	1	0	0	0	0	3
21	Sofia Kelemen		08:21	0-1	0-1	0-0	0	0	0	1	0	0	1	2	1	0	0	-6
Team							0	2	2			0		1				
<b>Totals</b>				5-15	1-7	0-0	2	6	8	4	3	11	5	6	3	0	0	-5

Shooting By Period		
2 <sup>nd</sup> FG%	5-15	33.3%
3PT%	1-7	14.3%
FT%	0-0	0%
GM FG%	5-15	33.3%
3PT%	1-7	14.3%
FT%	0-0	0.0%

Dead Ball Rebounds: 1, 0

Technical Fouls::NONE

New Mexico - 16

NO.	Name	F	Min	FG			Rebounds			Fouls		TP	AS	TO	ST	Blocks		+/-
				M-A	3P	FT	OR	DR	TOT	PF	FD					BS	BA	
30	Paula Reus	F	06:54	0-0	0-0	0-0	0	2	2	1	1	0	0	0	0	0	0	8
22	Charlotte Kohl	C	06:08	1-2	0-1	0-0	0	0	0	0	0	2	0	0	1	0	0	10
3	Nyah Wilson	G	10:00	3-5	1-1	1-2	0	2	2	0	2	8	0	1	1	0	0	5
12	Aniyah Augmon	G	08:01	0-2	0-0	0-0	0	1	1	0	0	0	2	2	0	0	0	9
33	Vianè Cumber	G	06:41	2-3	1-2	1-1	0	1	1	0	1	6	1	0	0	0	0	0
14	Hulda Joaquim		03:52	0-0	0-0	0-0	0	0	0	0	0	0	0	0	0	0	0	-5
5	Lara Langermann		07:12	0-0	0-0	0-0	0	0	0	2	0	0	0	0	0	0	0	2
10	Paris Lauro		01:12	0-0	0-0	0-0	0	0	0	0	0	0	0	0	0	0	0	-4
Team							0	1	1			0		1				
<b>Totals</b>				6-12	2-4	2-3	0	7	7	3	4	16	3	4	2	0	0	5

Shooting By Period		
2 <sup>nd</sup> FG%	6-12	50.0%
3PT%	2-4	50.0%
FT%	2-3	66.7%
GM FG%	6-12	50.0%
3PT%	2-4	50.0%
FT%	2-3	66.7%

Dead Ball Rebounds: 1, 0

Technical Fouls::NONE

	SJSU	UNM
Biggest lead	0 (1 <sup>st</sup> 10:00)	14 (2 <sup>nd</sup> 4:35)
Best Scoring Run	3(2 <sup>nd</sup> 1:08)	7(2 <sup>nd</sup> 8:24)
Lead Changes	0	
Times Tied	0	
Time with Lead	00:00	09:33

Points from	SJSU	UNM
Turnovers	4	7
Paint	8	8
Second Chance	0	0
Fast Breaks	0	2
Bench	0	0

	Period by Period Scoring				
	1st	2nd	3rd	4th	TOT
SJSU	12	11	9	19	51
UNM	17	16	19	20	72



San Jose St. at New Mexico

02/14/24 The Pit, Albuquerque  
2023-24 Women's Basketball

Game Time: 7:00 PM  
Game Duration: 1:41  
Attendance: 4,807

Officials: Michol Murray, Benny Luna, Nicole Leon

San Jose St. - 23

NO.	Name	Min	FG	3P	FT	Rebounds			Fouls		TP	AS	TO	ST	Blocks		+/-
			M-A	M-A	M-A	OR	DR	TOT	PF	FD					BS	BA	
15	Maya Anderson	F 16:19	0-4	0-1	2-2	0	0	0	1	3	2	1	0	2	0	0	-5
23	Alani Fluker	F 14:36	0-1	0-0	0-0	2	1	3	1	0	0	1	1	0	0	0	-12
24	Amhyia Moreland	F 08:58	3-3	0-0	2-2	0	2	2	2	1	8	0	1	0	0	0	-6
0	Sydni Summers	G 17:25	2-6	2-4	0-0	0	3	3	0	0	6	2	1	0	0	1	-5
30	Sabrina Ma	G 16:43	2-10	0-6	0-0	1	1	2	1	3	4	0	1	0	0	0	-5
31	Mia Grizelj	09:45	0-2	0-2	0-0	0	1	1	2	0	0	2	1	0	0	0	-2
21	Sofia Kelemen	13:37	1-3	1-3	0-0	2	0	2	3	0	3	2	2	2	0	0	-9
3	Nailea Nicholas	01:20	0-0	0-0	0-0	0	1	1	0	0	0	0	1	0	0	0	-4
34	Semaj Smith	01:17	0-0	0-0	0-0	0	0	0	0	0	0	0	0	0	0	0	-2
Team						0	3	3			0		1				
<b>Totals</b>			8-29	3-16	4-4	5	12	17	10	7	23	8	9	4	0	1	-10

Shooting By Period		
1st FG%	3-14	21.4%
3PT%	2-9	22.2%
FT%	4-4	100%
2nd FG%	5-15	33.3%
3PT%	1-7	14.3%
FT%	0-0	0%
GM FG%	8-29	27.6%
3PT%	3-16	18.8%
FT%	4-4	100.0%

Dead Ball Rebounds: 1, 0

Technical Fouls::NONE

New Mexico - 33

NO.	Name	Min	FG	3P	FT	Rebounds			Fouls		TP	AS	TO	ST	Blocks		+/-
			M-A	M-A	M-A	OR	DR	TOT	PF	FD					BS	BA	
30	Paula Reus	F 16:54	2-4	1-2	2-2	0	3	3	2	3	7	1	1	0	0	0	13
22	Charlotte Kohl	C 11:12	2-4	0-1	0-0	1	0	1	0	0	4	0	0	1	0	0	15
3	Nyah Wilson	G 16:58	3-8	1-1	1-2	1	2	3	0	2	8	1	2	1	1	0	7
12	Aniyah Augmon	G 16:07	1-4	1-1	2-2	0	4	4	1	4	5	4	2	0	0	0	17
33	Vianè Cumber	G 16:41	3-5	2-4	1-1	0	2	2	1	1	9	1	0	1	0	0	5
5	Lara Langermann	12:08	0-0	0-0	0-0	0	0	0	2	0	0	0	0	0	0	0	2
14	Hulda Joaquim	08:48	0-0	0-0	0-0	0	1	1	1	0	0	0	0	0	0	0	-5
10	Paris Lauro	01:12	0-0	0-0	0-0	0	0	0	0	0	0	0	0	0	0	0	-4
Team						0	3	3			0		1				
<b>Totals</b>			11-25	5-9	6-7	2	15	17	7	10	33	7	6	3	1	0	10

Shooting By Period		
1st FG%	5-13	38.5%
3PT%	3-5	60.0%
FT%	4-4	100%
2nd FG%	6-12	50.0%
3PT%	2-4	50.0%
FT%	2-3	66.7%
GM FG%	11-25	44.0%
3PT%	5-9	55.6%
FT%	6-7	85.7%

Dead Ball Rebounds: 1, 0

Technical Fouls::NONE

	SJSU	UNM
Biggest lead	2 (1 <sup>st</sup> 9:43)	14 (2 <sup>nd</sup> 4:35)
Best Scoring Run	6 (1 <sup>st</sup> 0:06)	11 (1 <sup>st</sup> 3:14)
Lead Changes	1	
Times Tied	1	
Time with Lead	02:35	15:41

Points from	SJSU	UNM
Turnovers	7	10
Paint	8	10
Second Chance	3	3
Fast Breaks	2	4
Bench	3	0

	Period by Period Scoring				
	1st	2nd	3rd	4th	TOT
SJSU	12	11	9	19	51
UNM	17	16	19	20	72



**Period 3**

**Quarter Starters:**

<b>UNM</b>	3 Wilson N	12 Augmon A	22 Kohl C	30 Reus P	33 Cumber V
<b>SJSU</b>	0 Summers S	15 Anderson M	23 Fluker A	24 Moreland A	30 Ma S

Game Time	UNM	Score	Diff	SJSU
10:00	5 LANGERMANN L substitution out			
10:00	10 LAURO P substitution out			
10:00	14 JOAQUIM H substitution out			
10:00	12 AUGMON A substitution in			
10:00	22 KOHL C substitution in			
10:00	30 REUS P substitution in			
10:00				21 KELEMENI S substitution out
10:00				31 GRIZELJ M substitution out
10:00				23 FLUKER A substitution in
10:00				24 MORELAND A substitution in
09:44	3 WILSON N foul offensive (1 - 1)			30 MA S foul drawn (4)
09:44	3 WILSON N turnover offensive (3)			
09:34		<b>33-25</b>	<b>8</b>	24 MORELAND A 2pt FG from turnover outside the paint, jump shot made (10)
09:34				0 SUMMERS S assist (3)
09:11	33 CUMBER V 3pt FG , jump shot made (12)	<b>36-25</b>	<b>11</b>	
09:11	22 KOHL C assist (1)			
08:50				24 MORELAND A 2pt FG outside the paint, jump shot missed
08:48	22 KOHL C defensive rebound (2)			
08:39	33 CUMBER V 2pt FG outside the paint, jump shot missed			
08:37				15 ANDERSON M defensive rebound (1)
08:14		<b>36-27</b>	<b>9</b>	24 MORELAND A 2pt FG in the paint, layup made (12)
08:14				30 MA S assist (1)
07:57	3 WILSON N 2pt FG in the paint, layup missed			
07:54				23 FLUKER A defensive rebound (4)
07:46				24 MORELAND A 2pt FG in the paint, layup missed
07:46	33 CUMBER V defensive rebound (3)			
07:46	22 KOHL C foul drawn (1)			24 MORELAND A foul personal (3 - 1)
07:46	22 KOHL C substitution out			
07:46	14 JOAQUIM H substitution in			
07:46				23 FLUKER A substitution out
07:46				24 MORELAND A substitution out
07:46				21 KELEMENI S substitution in
07:46				31 GRIZELJ M substitution in
07:35	12 AUGMON A 2pt FG in the paint, jump shot made (7)	<b>38-27</b>	<b>11</b>	
07:35	30 REUS P assist (2)			
07:07				21 KELEMENI S turnover travel (3)
06:47	14 JOAQUIM H 2pt FG from turnover in the paint, layup missed			
06:45	14 JOAQUIM H offensive rebound (2)			
06:41	3 WILSON N 3pt FG from turnover second chance, jump shot made (11)	<b>41-27</b>	<b>14</b>	
06:41	33 CUMBER V assist (2)			
06:23				15 ANDERSON M 2pt FG in the paint, layup missed
06:20	14 JOAQUIM H defensive rebound (3)			



**San Jose St. at New Mexico**

02/14/24 The Pit, Albuquerque  
2023-24 Women's Basketball

**Game Time:** 7:00 PM  
**Game Duration:** 1:41  
**Attendance:** 4,807

**Officials:** Michol Murray, Benny Luna, Nicole Leon

Game Time	UNM	Score	Diff	SJSU
06:12	12 AUGMON A turnover out of bounds (3)			
06:12				31 GRIZELJ M substitution out
06:12				24 MORELAND A substitution in
06:04	33 CUMBER V foul drawn (2)			30 MA S foul offensive (2 - 2)
06:04				30 MA S turnover offensive (2)
05:46	33 CUMBER V 3pt FG from turnover, jump shot missed			
05:43	14 JOAQUIM H offensive rebound (4)			
05:38	12 AUGMON A 3pt FG from turnover second chance, jump shot missed			
05:33				21 KELEMENI S defensive rebound (3)
05:26				24 MORELAND A 2pt FG in the paint, layup missed
05:24	30 REUS P defensive rebound (4)			
05:18	30 REUS P 2pt FG in the paint, layup missed			
05:16	14 JOAQUIM H offensive rebound (5)			
05:14	33 CUMBER V 2pt FG second chance in the paint, jump shot blocked			
05:14				24 MORELAND A block (1)
05:10				0 SUMMERS S defensive rebound (4)
05:08	12 AUGMON A steal (1)			21 KELEMENI S turnover lost ball (4)
05:00	30 REUS P 3pt FG from turnover, jump shot missed			
04:57				15 ANDERSON M defensive rebound (2)
04:42	Timeout media			
04:42	3 WILSON N substitution out			
04:42	5 LANGERMANN L substitution in			
04:42				15 ANDERSON M substitution out
04:42				23 FLUKER A substitution in
04:40	5 LANGERMANN L steal (1)			23 FLUKER A turnover bad pass (2)
04:22	30 REUS P 2pt FG from turnover in the paint, layup made (9)	<b>43-27</b>	<b>16</b>	
04:06		<b>43-30</b>	<b>13</b>	30 MA S 3pt FG , jump shot made (7)
04:06				23 FLUKER A assist (2)
03:40	12 AUGMON A 3pt FG , jump shot missed			
03:37	14 JOAQUIM H offensive rebound (6)			
03:34	33 CUMBER V 2pt FG second chance in the paint, layup made (14)	<b>45-30</b>	<b>15</b>	
03:34	14 JOAQUIM H assist (1)			
03:19	12 AUGMON A foul drawn (5)			24 MORELAND A foul offensive (4 - 3)
03:19				24 MORELAND A turnover offensive (2)
03:19				23 FLUKER A substitution out
03:19				24 MORELAND A substitution out
03:19				15 ANDERSON M substitution in
03:19				31 GRIZELJ M substitution in
02:55	14 JOAQUIM H 2pt FG from turnover in the paint, layup made (2)	<b>47-30</b>	<b>17</b>	
02:55	30 REUS P assist (3)			
02:35				21 KELEMENI S 2pt FG in the paint, layup missed
02:32	14 JOAQUIM H defensive rebound (7)			
02:18	12 AUGMON A 3pt FG , jump shot made (10)	<b>50-30</b>	<b>20</b>	
02:01	5 LANGERMANN L foul drawn (1)			30 MA S foul offensive (3 - 4)
02:01				30 MA S turnover offensive (3)
01:42	12 AUGMON A 3pt FG from turnover, jump shot missed			



**San Jose St. at New Mexico**

02/14/24 The Pit, Albuquerque  
2023-24 Women's Basketball

**Game Time:** 7:00 PM  
**Game Duration:** 1:41  
**Attendance:** 4,807

**Officials:** Michol Murray, Benny Luna, Nicole Leon

Game Time	UNM	Score	Diff	SJSU
01:40				defensive rebound (23)
01:40				31 GRIZELJ M substitution out
01:40				24 MORELAND A substitution in
01:18		<b>50-32</b>	<b>18</b>	30 MA S 2pt FG in the paint, layup made (9)
01:18				15 ANDERSON M assist (2)
01:02	33 CUMBER V foul drawn (3)			15 ANDERSON M foul personal (2 - 5)
01:02				24 MORELAND A substitution out
01:02				31 GRIZELJ M substitution in
01:02	33 CUMBER V free throw 1 - 2 made (15)	<b>51-32</b>	<b>19</b>	
01:02	33 CUMBER V free throw 2 - 2 made (16)	<b>52-32</b>	<b>20</b>	
01:02	12 AUGMON A substitution out			
01:02	3 WILSON N substitution in			
00:51				21 KELEMENI S 2pt FG in the paint, layup missed
00:48	14 JOAQUIM H defensive rebound (8)			
00:42	3 WILSON N 2pt FG in the paint, layup missed			
00:40				30 MA S defensive rebound (3)
00:36				0 SUMMERS S 3pt FG , jump shot missed
00:33				0 SUMMERS S offensive rebound (5)
00:13				15 ANDERSON M 2pt FG second chance outside the paint, jump shot missed
00:13				offensive dead ball rebound (2)
00:13				turnover shot clock (16)
00:13				15 ANDERSON M substitution out
00:13				23 FLUKER A substitution in
00:00	3 WILSON N 2pt FG from turnover in the paint, layup blocked			
00:00				21 KELEMENI S block (1)
00:00				defensive rebound (26)
00:00	3 WILSON N substitution out			
00:00	30 REUS P substitution out			
00:00	1 DIARRA BERTHE N substitution in			
00:00	10 LAURO P substitution in			
<b>END OF PERIOD</b>				
<b>UNM 52-32 SJSU</b>				



San Jose St. at New Mexico

02/14/24 The Pit, Albuquerque  
2023-24 Women's Basketball

Game Time: 7:00 PM  
Game Duration: 1:41  
Attendance: 4,807

Officials: Michol Murray, Benny Luna, Nicole Leon

San Jose St. - 9

NO.	Name	Min	FG	3P	FT	Rebounds			Fouls		TP	AS	TO	ST	Blocks		+/-
			M-A	M-A	M-A	OR	DR	TOT	PF	FD					BS	BA	
15	Maya Anderson	F 08:23	0-2	0-0	0-0	0	2	2	1	0	0	1	0	0	0	0	-9
23	Alani Fluker	F 03:51	0-0	0-0	0-0	0	1	1	0	0	0	1	1	0	0	0	
24	Amhyia Moreland	F 05:45	2-5	0-0	0-0	0	0	0	2	0	4	0	1	0	1	0	2
0	Sydni Summers	G 10:00	0-1	0-1	0-0	1	1	2	0	0	0	1	0	0	0	0	-10
30	Sabrina Ma	G 10:00	2-2	1-1	0-0	0	1	1	2	1	5	1	2	0	0	0	-10
21	Sofia Kelemeni	07:46	0-2	0-0	0-0	0	1	1	0	0	0	0	2	0	1	0	-11
31	Mia Grizelj	04:15	0-0	0-0	0-0	0	0	0	0	0	0	0	0	0	0	0	-12
Team						0	2	2			0		1				
<b>Totals</b>			4-12	1-2	0-0	1	8	9	5	1	9	4	7	0	2	0	-10

Shooting By Period		
3rd FG%	4-12	33.3%
3PT%	1-2	50.0%
FT%	0-0	0%
GM FG%	4-12	33.3%
3PT%	1-2	50.0%
FT%	0-0	0.0%

Dead Ball Rebounds: 1, 0

Technical Fouls::NONE

New Mexico - 19

NO.	Name	Min	FG	3P	FT	Rebounds			Fouls		TP	AS	TO	ST	Blocks		+/-
			M-A	M-A	M-A	OR	DR	TOT	PF	FD					BS	BA	
30	Paula Reus	F 09:60	1-3	0-1	0-0	0	1	1	0	0	2	2	0	0	0	0	10
22	Charlotte Kohl	C 02:14	0-0	0-0	0-0	0	1	1	0	1	0	1	0	0	0	0	-1
3	Nyah Wilson	G 06:20	1-4	1-1	0-0	0	0	0	1	0	3	0	1	0	0	1	4
12	Aniyah Augmon	G 08:58	2-5	1-4	0-0	0	0	0	0	1	5	0	1	1	0	0	10
33	Vianè Cumber	G 10:00	2-5	1-2	2-2	0	1	1	0	2	7	1	0	0	0	1	10
14	Hulda Joaquim	07:46	1-2	0-0	0-0	4	3	7	0	0	2	1	0	0	0	0	11
5	Lara Langermann	04:42	0-0	0-0	0-0	0	0	0	0	1	0	0	0	1	0	0	6
1	Nahawa Diarra Berthe	00:00	0-0	0-0	0-0	0	0	0	0	0	0	0	0	0	0	0	0
10	Paris Lauro	00:00	0-0	0-0	0-0	0	0	0	0	0	0	0	0	0	0	0	0
Team						0	0	0			0		0				
<b>Totals</b>			7-19	3-8	2-2	4	6	10	1	5	19	5	2	2	0	2	10

Shooting By Period		
3rd FG%	7-19	36.8%
3PT%	3-8	37.5%
FT%	2-2	100%
GM FG%	7-19	36.8%
3PT%	3-8	37.5%
FT%	2-2	100.0%

Dead Ball Rebounds: 0, 0

Technical Fouls::NONE

	SJSU	UNM
Biggest lead	0 (1 <sup>st</sup> 10:00)	20 (3 <sup>rd</sup> 2:18)
Best Scoring Run	3(3 <sup>rd</sup> 4:06)	7(3 <sup>rd</sup> 4:22)
Lead Changes	0	
Times Tied	0	
Time with Lead	00:00	09:34

Points from	SJSU	UNM
Turnovers	2	7
Paint	4	8
Second Chance	0	5
Fast Breaks	0	0
Bench	0	2

	Period by Period Scoring				
	1st	2nd	3rd	4th	TOT
SJSU	12	11	9	19	51
UNM	17	16	19	20	72



**San Jose St. at New Mexico**

02/14/24 The Pit, Albuquerque  
2023-24 Women's Basketball

**Game Time:** 7:00 PM  
**Game Duration:** 1:41  
**Attendance:** 4,807

**Officials:** Michol Murray, Benny Luna, Nicole Leon

**Period 4**

**Quarter Starters:**

<b>UNM</b>	1 Diarra Berthe N	5 Langermann L	10 Lauro P	12 Augmon A	14 Joaquim H
<b>SJSU</b>	0 Summers S	21 Kelemeni S	23 Fluker A	30 Ma S	31 Grizelj M

Game Time	UNM	Score	Diff	SJSU
10:00	33 CUMBER V substitution out			
10:00	12 AUGMON A substitution in			
09:49				23 FLUKER A 2pt FG in the paint, turnaround jump shot missed
09:45	14 JOAQUIM H defensive rebound (9)			
09:42	12 AUGMON A 2pt FG in the paint, layup blocked			
09:42				30 MA S block (1)
09:39	14 JOAQUIM H offensive rebound (10)			
09:39	14 JOAQUIM H foul drawn (1)			30 MA S foul personal (4 - 1)
09:39				31 GRIZELJ M substitution out
09:39				34 SMITH S substitution in
09:39				30 MA S substitution out
09:39				15 ANDERSON M substitution in
09:33	10 LAURO P 2pt FG second chance outside the paint, step back jump shot missed			
09:33				defensive rebound (27)
09:17		<b>52-34</b>	<b>18</b>	34 SMITH S 2pt FG in the paint, layup made (2)
09:17				15 ANDERSON M assist (3)
08:51	5 LANGERMANN L 3pt FG , jump shot missed			
08:48	10 LAURO P offensive rebound (1)			
08:47	10 LAURO P 2pt FG second chance in the paint, layup blocked			
08:47				34 SMITH S block (1)
08:44				34 SMITH S defensive rebound (1)
08:37	1 DIARRA BERTHE N foul drawn (1)			34 SMITH S foul offensive (1 - 2)
08:37				34 SMITH S turnover offensive (1)
08:37	1 DIARRA BERTHE N substitution out			
08:37	5 LANGERMANN L substitution out			
08:37	10 LAURO P substitution out			
08:37	14 JOAQUIM H substitution out			
08:37	3 WILSON N substitution in			
08:37	22 KOHL C substitution in			
08:37	30 REUS P substitution in			
08:37	33 CUMBER V substitution in			
08:26	12 AUGMON A foul drawn (6)			15 ANDERSON M foul personal (3 - 3)
08:26				34 SMITH S substitution out
08:26				31 GRIZELJ M substitution in
08:18	22 KOHL C 2pt FG from turnover in the paint, hook shot missed			
08:13				31 GRIZELJ M defensive rebound (2)
08:09				21 KELEMENI S 3pt FG , jump shot missed
08:06	12 AUGMON A defensive rebound (5)			
07:44	30 REUS P 2pt FG in the paint, layup missed			
07:41				23 FLUKER A defensive rebound (5)
07:12		<b>52-37</b>	<b>15</b>	0 SUMMERS S 3pt FG , jump shot made (9)
06:43	3 WILSON N 2pt FG in the paint, layup missed			



**San Jose St. at New Mexico**

02/14/24 The Pit, Albuquerque  
2023-24 Women's Basketball

**Game Time:** 7:00 PM  
**Game Duration:** 1:41  
**Attendance:** 4,807

**Officials:** Michol Murray, Benny Luna, Nicole Leon

Game Time	UNM	Score	Diff	SJSU
06:38	22 KOHL C offensive rebound (3)			
06:38	22 KOHL C 2pt FG second chance in the paint, layup made (6)	<b>54-37</b>	<b>17</b>	
06:15		<b>54-39</b>	<b>15</b>	21 KELEMENI S 2pt FG in the paint, layup made (5)
06:15				15 ANDERSON M assist (4)
05:57	22 KOHL C foul drawn (2)			0 SUMMERS S foul personal (1 - 4)
05:57	22 KOHL C substitution out			
05:57	14 JOAQUIM H substitution in			
05:57				21 KELEMENI S substitution out
05:57				31 GRIZELJ M substitution out
05:57				24 MORELAND A substitution in
05:57				30 MA S substitution in
05:52	30 REUS P 2pt FG in the paint, jump shot missed			
05:49	30 REUS P offensive rebound (5)			
05:31	3 WILSON N 2pt FG second chance outside the paint, pull up jump shot missed			
05:30	offensive rebound (34)			
05:30				Timeout 30 Sec
05:30				Timeout media
05:30				0 SUMMERS S substitution out
05:30				21 KELEMENI S substitution in
05:10	3 WILSON N 3pt FG second chance, jump shot missed			
05:07				21 KELEMENI S defensive rebound (4)
04:59				24 MORELAND A 2pt FG in the paint, layup missed
04:59				24 MORELAND A offensive rebound (3)
04:59		<b>54-41</b>	<b>13</b>	24 MORELAND A 2pt FG second chance in the paint, layup made (14)
04:59	14 JOAQUIM H foul shooting (2 - 1)			24 MORELAND A foul drawn (2)
04:59		<b>54-42</b>	<b>12</b>	24 MORELAND A free throw 1 - 1 made (15)
04:58	12 AUGMON A foul drawn (7)			15 ANDERSON M foul personal (4 - 5)
04:58				15 ANDERSON M substitution out
04:58				0 SUMMERS S substitution in
04:58	12 AUGMON A free throw 1 - 2 made (11)	<b>55-42</b>	<b>13</b>	
04:58	12 AUGMON A free throw 2 - 2 made (12)	<b>56-42</b>	<b>14</b>	
04:47	3 WILSON N foul drawn (3)			23 FLUKER A foul offensive (2 - 6)
04:47				23 FLUKER A turnover offensive (3)
04:28	14 JOAQUIM H 2pt FG from turnover in the paint, layup blocked			
04:28				24 MORELAND A block (2)
04:24				21 KELEMENI S defensive rebound (5)
04:18				24 MORELAND A 2pt FG outside the paint, turnaround jump shot missed
04:15	14 JOAQUIM H defensive rebound (11)			
04:09	3 WILSON N 3pt FG , jump shot made (14)	<b>59-42</b>	<b>17</b>	
04:09	12 AUGMON A assist (5)			
03:49				0 SUMMERS S 3pt FG , jump shot missed
03:46	33 CUMBER V defensive rebound (4)			
03:36	33 CUMBER V 3pt FG , jump shot missed			
03:34				24 MORELAND A defensive rebound (4)
03:21				0 SUMMERS S turnover bad pass (2)
03:21				Timeout 30 Sec
03:21				0 SUMMERS S substitution out





**San Jose St. at New Mexico**

02/14/24 The Pit, Albuquerque  
2023-24 Women's Basketball

**Game Time:** 7:00 PM  
**Game Duration:** 1:41  
**Attendance:** 4,807

**Officials:** Michol Murray, Benny Luna, Nicole Leon

Game Time	UNM	Score	Diff	SJSU
03:21				24 MORELAND A substitution out
03:21				15 ANDERSON M substitution in
03:21				31 GRIZELJ M substitution in
03:04	3 WILSON N foul drawn (4)			21 KELEMENI S foul shooting (4 - 7)
03:04				21 KELEMENI S foul player technical (5 - 8)
03:04	3 WILSON N free throw 1 - 2 made (15)	<b>60-42</b>	<b>18</b>	
03:04				21 KELEMENI S substitution out
03:04				24 MORELAND A substitution in
03:04	3 WILSON N free throw 2 - 2 made (16)	<b>61-42</b>	<b>19</b>	
03:04	33 CUMBER V free throw 1 - 2 made (17)	<b>62-42</b>	<b>20</b>	
03:04	33 CUMBER V free throw 2 - 2 missed			
03:04	offensive rebound (37)			
02:44	14 JOAQUIM H 2pt FG second chance in the paint, layup made (4)	<b>64-42</b>	<b>22</b>	
02:44	30 REUS P assist (4)			
02:34				Timeout 60 Sec
02:34	12 AUGMON A substitution out			
02:34	14 JOAQUIM H substitution out			
02:34	33 CUMBER V substitution out			
02:34	2 CHAVEZ N substitution in			
02:34	5 LANGERMANN L substitution in			
02:34	22 KOHL C substitution in			
02:22		<b>64-45</b>	<b>19</b>	30 MA S 3pt FG , jump shot made (12)
02:22				23 FLUKER A assist (3)
01:58	22 KOHL C 2pt FG in the paint, jump shot made (8)	<b>66-45</b>	<b>21</b>	
01:58	2 CHAVEZ N assist (1)			
01:43		<b>66-47</b>	<b>19</b>	24 MORELAND A 2pt FG in the paint, layup made (17)
01:31	2 CHAVEZ N 3pt FG , jump shot made (3)	<b>69-47</b>	<b>22</b>	
01:31	3 WILSON N assist (2)			
01:13		<b>69-49</b>	<b>20</b>	24 MORELAND A 2pt FG outside the paint, jump shot made (19)
01:13				30 MA S assist (2)
01:05	3 WILSON N substitution out			
01:05	22 KOHL C substitution out			
01:05	30 REUS P substitution out			
01:05	1 DIARRA BERTHE N substitution in			
01:05	10 LAURO P substitution in			
01:05	21 CURTIS M substitution in			
01:05				24 MORELAND A substitution out
01:05				34 SMITH S substitution in
00:46	21 CURTIS M 3pt FG , jump shot missed			
00:44	1 DIARRA BERTHE N offensive rebound (1)			
00:41	21 CURTIS M 3pt FG second chance, jump shot made (3)	<b>72-49</b>	<b>23</b>	
00:41	10 LAURO P assist (1)			
00:29		<b>72-51</b>	<b>21</b>	34 SMITH S 2pt FG in the paint, layup made (4)
00:29				30 MA S assist (3)
<b>END OF GAME</b>				
<b>UNM 72-51 SJSU</b>				



San Jose St. at New Mexico

02/14/24 The Pit, Albuquerque  
2023-24 Women's Basketball

Game Time: 7:00 PM  
Game Duration: 1:41  
Attendance: 4,807

Officials: Michol Murray, Benny Luna, Nicole Leon

San Jose St. - 19

NO.	Name	Min	FG	3P	FT	Rebounds			Fouls		TP	AS	TO	ST	Blocks		+/-
			M-A	M-A	M-A	OR	DR	TOT	PF	FD					BS	BA	
15	Maya Anderson	F 08:02	0-0	0-0	0-0	0	0	0	2	0	0	2	0	0	0	0	4
23	Alani Fluker	F 10:00	0-1	0-0	0-0	0	1	1	1	0	0	1	1	0	0	0	-1
24	Amhyia Moreland	F 04:35	3-5	0-0	1-1	1	1	2	0	1	7	0	0	0	1	0	-4
0	Sydni Summers	G 06:07	1-2	1-2	0-0	0	0	0	1	0	3	0	1	0	0	0	0
30	Sabrina Ma	G 06:18	1-1	1-1	0-0	0	0	0	1	0	3	2	0	0	1	0	-6
34	Semaj Smith	02:18	2-2	0-0	0-0	0	1	1	1	0	4	0	1	0	1	0	1
31	Mia Grizelj	06:11	0-0	0-0	0-0	0	1	1	0	0	0	0	0	0	0	0	-1
21	Sofia Kelemeni	06:29	1-2	0-1	0-0	0	2	2	2	0	2	0	0	0	0	0	2
Team						0	1	1			0		0				
<b>Totals</b>			8-13	2-4	1-1	1	7	8	8	1	19	5	3	0	3	0	-1

Shooting By Period		
4 <sup>th</sup> FG%	8-13	61.5%
3PT%	2-4	50.0%
FT%	1-1	100%
GM FG%	8-13	61.5%
3PT%	2-4	50.0%
FT%	1-1	100.0%

Dead Ball Rebounds: 0, 0

Technical Fouls: Kelemeni 4<sup>th</sup> 3:04

New Mexico - 20

NO.	Name	Min	FG	3P	FT	Rebounds			Fouls		TP	AS	TO	ST	Blocks		+/-
			M-A	M-A	M-A	OR	DR	TOT	PF	FD					BS	BA	
30	Paula Reus	F 07:32	0-2	0-0	0-0	1	0	1	0	0	0	1	0	0	0	0	2
22	Charlotte Kohl	C 04:09	2-3	0-0	0-0	1	0	1	0	1	4	0	0	0	0	0	-5
3	Nyah Wilson	G 07:32	1-4	1-2	2-2	0	0	0	0	2	5	1	0	0	0	0	2
12	Aniyah Augmon	G 07:26	0-1	0-0	2-2	0	1	1	0	2	2	1	0	0	0	1	2
33	Vianè Cumber	G 06:03	0-1	0-1	1-2	0	1	1	0	0	1	0	0	0	0	0	4
14	Hulda Joaquim	04:46	1-2	0-0	0-0	1	2	3	1	1	2	0	0	0	0	1	5
2	Natalia Chavez	02:34	1-1	1-1	0-0	0	0	0	0	0	3	1	0	0	0	0	-1
5	Lara Langermann	03:57	0-1	0-1	0-0	0	0	0	0	0	0	0	0	0	0	0	-3
1	Nahawa Diarra Berthe	02:28	0-0	0-0	0-0	1	0	1	0	1	0	0	0	0	0	0	-1
10	Paris Lauro	02:28	0-2	0-0	0-0	1	0	1	0	0	0	1	0	0	0	1	-1
21	Mackenzie Curtis	01:05	1-2	1-2	0-0	0	0	0	0	0	3	0	0	0	0	0	1
Team						2	0	2			0		0				
<b>Totals</b>			6-19	3-7	5-6	7	4	11	1	7	20	5	0	0	0	3	1

Shooting By Period		
4 <sup>th</sup> FG%	6-19	31.6%
3PT%	3-7	42.9%
FT%	5-6	83.3%
GM FG%	6-19	31.6%
3PT%	3-7	42.9%
FT%	5-6	83.3%

Dead Ball Rebounds: 0, 0

Technical Fouls: NONE

	SJSU	UNM
Biggest lead	0 (1 <sup>st</sup> 10:00)	23 (4 <sup>th</sup> 0:41)
Best Scoring Run	5 (4 <sup>th</sup> 7:12)	10 (4 <sup>th</sup> 2:44)
Lead Changes	0	
Times Tied	0	
Time with Lead	00:00	09:49

Points from	SJSU	UNM
Turnovers	0	3
Paint	10	6
Second Chance	3	7
Fast Breaks	0	0
Bench	6	8

	Period by Period Scoring				
	1st	2nd	3rd	4th	TOT
SJSU	12	11	9	19	51
UNM	17	16	19	20	72



San Jose St. at New Mexico

02/14/24 The Pit, Albuquerque  
2023-24 Women's Basketball

Game Time: 7:00 PM  
Game Duration: 1:41  
Attendance: 4,807

Officials: Michol Murray, Benny Luna, Nicole Leon

San Jose St. - 28

NO.	Name	Min	FG	3P	FT	Rebounds			Fouls		TP	AS	TO	ST	Blocks		+/-
			M-A	M-A	M-A	OR	DR	TOT	PF	FD					BS	BA	
15	Maya Anderson	F 16:25	0-2	0-0	0-0	0	2	2	3	0	0	3	0	0	0	0	-5
23	Alani Fluker	F 13:51	0-1	0-0	0-0	0	2	2	1	0	0	2	2	0	0	0	-1
24	Amhyia Moreland	F 10:20	5-10	0-0	1-1	1	1	2	2	1	11	0	1	0	2	0	-2
0	Sydni Summers	G 16:07	1-3	1-3	0-0	1	1	2	1	0	3	1	1	0	0	0	-10
30	Sabrina Ma	G 16:18	3-3	2-2	0-0	0	1	1	3	1	8	3	2	0	1	0	-16
21	Sofia Kelemeni	14:15	1-4	0-1	0-0	0	3	3	2	0	2	0	2	0	1	0	-9
31	Mia Grizelj	10:26	0-0	0-0	0-0	0	1	1	0	0	0	0	0	0	0	0	-13
34	Semaj Smith	02:18	2-2	0-0	0-0	0	1	1	1	0	4	0	1	0	1	0	1
Team						0	3	3			0		1				
<b>Totals</b>			12-25	3-6	1-1	2	15	17	13	2	28	9	10	0	5	0	-11

Shooting By Period		
3 <sup>rd</sup> FG%	4-12	33.3%
3PT%	1-2	50.0%
FT%	0-0	0%
4 <sup>th</sup> FG%	8-13	61.5%
3PT%	2-4	50.0%
FT%	1-1	100%
GM FG%	12-25	48.0%
3PT%	3-6	50.0%
FT%	1-1	100.0%

Dead Ball Rebounds: 1, 0

Technical Fouls: Kelemeni 4<sup>th</sup> 3:04

New Mexico - 39

NO.	Name	Min	FG	3P	FT	Rebounds			Fouls		TP	AS	TO	ST	Blocks		+/-
			M-A	M-A	M-A	OR	DR	TOT	PF	FD					BS	BA	
30	Paula Reus	F 17:32	1-5	0-1	0-0	1	1	2	0	0	2	3	0	0	0	0	12
22	Charlotte Kohl	C 06:23	2-3	0-0	0-0	1	1	2	0	2	4	1	0	0	0	0	-6
3	Nyah Wilson	G 13:52	2-8	2-3	2-2	0	0	0	1	2	8	1	1	0	0	1	6
12	Aniyah Augmon	G 16:24	2-6	1-4	2-2	0	1	1	0	3	7	1	1	1	0	1	12
33	Vianè Cumber	G 16:03	2-6	1-3	3-4	0	2	2	0	2	8	1	0	0	0	1	14
14	Hulda Joaquim	12:32	2-4	0-0	0-0	5	5	10	1	1	4	1	0	0	0	1	16
5	Lara Langermann	08:39	0-1	0-1	0-0	0	0	0	0	1	0	0	0	1	0	0	3
1	Nahawa Diarra Berthe	02:28	0-0	0-0	0-0	1	0	1	0	1	0	0	0	0	0	0	-1
10	Paris Lauro	02:28	0-2	0-0	0-0	1	0	1	0	0	0	1	0	0	0	1	-1
2	Natalia Chavez	02:34	1-1	1-1	0-0	0	0	0	0	0	3	1	0	0	0	0	-1
21	Mackenzie Curtis	01:05	1-2	1-2	0-0	0	0	0	0	0	3	0	0	0	0	0	1
Team						2	0	2			0		0				
<b>Totals</b>			13-38	6-15	7-8	11	10	21	2	12	39	10	2	2	0	5	11

Shooting By Period		
3 <sup>rd</sup> FG%	7-19	36.8%
3PT%	3-8	37.5%
FT%	2-2	100%
4 <sup>th</sup> FG%	6-19	31.6%
3PT%	3-7	42.9%
FT%	5-6	83.3%
GM FG%	13-38	34.2%
3PT%	6-15	40.0%
FT%	7-8	87.5%

Dead Ball Rebounds: 0, 0

Technical Fouls: NONE

	SJSU	UNM
Biggest lead	0 (1 <sup>st</sup> 10:00)	23 (4 <sup>th</sup> 0:41)
Best Scoring Run	5 (4 <sup>th</sup> 7:12)	10 (4 <sup>th</sup> 2:44)
Lead Changes	0	
Times Tied	0	
Time with Lead	00:00	19:34

Points from	SJSU	UNM
Turnovers	2	10
Paint	14	14
Second Chance	3	12
Fast Breaks	0	0
Bench	6	10

	Period by Period Scoring				
	1st	2nd	3rd	4th	TOT
SJSU	12	11	9	19	51
UNM	17	16	19	20	72



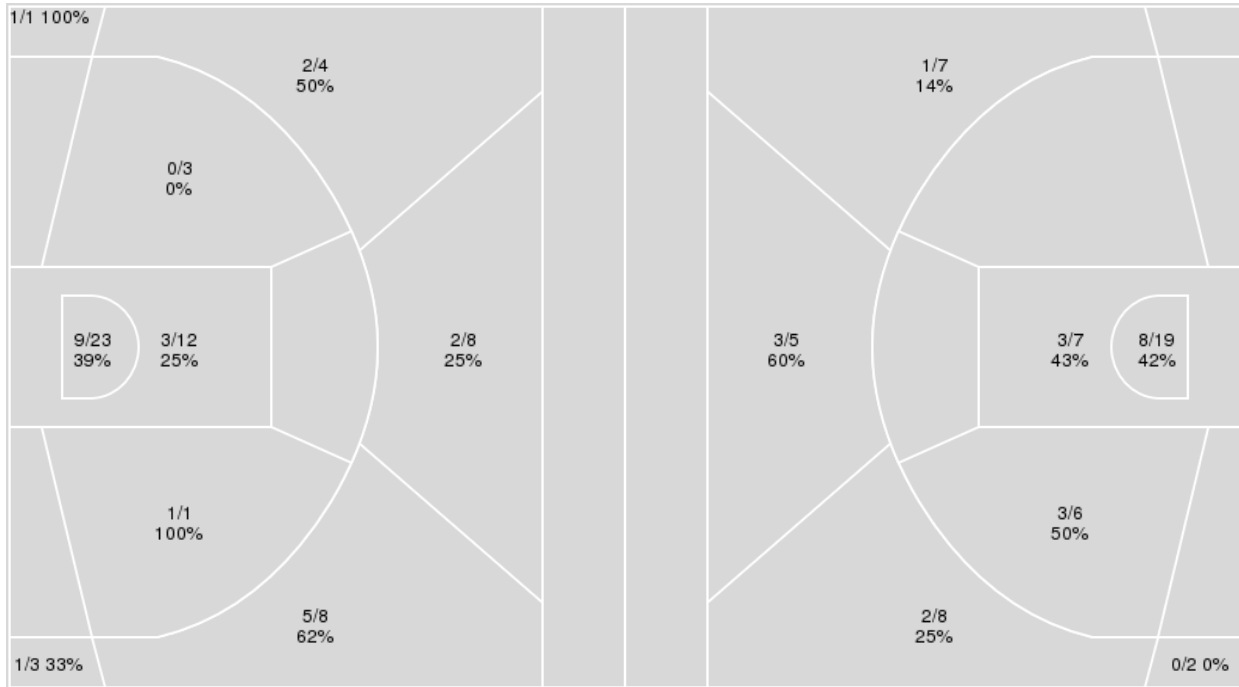
**Officials:** Michol Murray, Benny Luna, Nicole Leon

{ Players => 1, 2, 3, 4, 5, 10, 12, 14, 15, 21, 22, 24, 30, 33; } FG Types => All; Results => All;

{ Players => 0, 1, 2, 3, 4, 11, 12, 13, 15, 21, 22, 23, 24, 30, 31, 32, 34, 44; } FG Types => All; Results => All;

**New Mexico**

**San Jose St.**



New Mexico	M/A	%
Field Goals	24/63	38
2 Points	13/39	33
3 Points	11/24	46
Free Throws	13/15	87

San Jose St.	M/A	%
Field Goals	20/54	37
2 Points	14/32	44
3 Points	6/22	27
Free Throws	5/5	100



**San Jose St. at New Mexico**

02/14/24 The Pit, Albuquerque  
2023-24 Women's Basketball

**Game Time:** 7:00 PM  
**Game Duration:** 1:41  
**Attendance:** 4,807

**Officials:** Michol Murray, Benny Luna, Nicole Leon

**San Jose St.**

No	Name	Mins		Score		Points Diff		Points per Min		Assists		Rebounds		Steals		Turnovers	
		On	Off	On	Off	On	Off	On	Off	On	Off	On	Off	On	Off	On	Off
0	Sydni Summers	33:32	06:28	39 - 54	12 - 18	-15	-6	1.16	1.86	14	3	29	5	4	0	18	1
3	Nailea Nicholas	01:20	38:40	0 - 4	51 - 68	-4	-17	0.00	1.32	0	17	1	33	0	4	3	16
15	Maya Anderson	32:44	07:16	46 - 56	5 - 16	-10	-11	1.41	0.69	15	2	25	9	4	0	11	8
21	Sofia Kelemeni	27:52	12:08	32 - 50	19 - 22	-18	-3	1.15	1.57	10	7	28	6	4	0	17	2
23	Alani Fluker	28:27	11:33	36 - 49	15 - 23	-13	-8	1.27	1.30	12	5	25	9	2	2	10	9
24	Amhyia Moreland	19:18	20:42	27 - 35	24 - 37	-8	-13	1.40	1.16	9	8	20	14	1	3	11	8
30	Sabrina Ma	33:01	06:59	42 - 63	9 - 9	-21	0	1.27	1.29	14	3	28	6	2	2	17	2
31	Mia Grizelj	20:11	19:49	29 - 44	22 - 28	-15	-6	1.44	1.11	9	8	11	23	2	2	6	13
34	Semaj Smith	03:35	36:25	4 - 5	47 - 67	-1	-20	1.12	1.29	2	15	3	31	1	3	2	17

**New Mexico**

No	Name	Mins		Score		Points Diff		Points per Min		Assists		Rebounds		Steals		Turnovers	
		On	Off	On	Off	On	Off	On	Off	On	Off	On	Off	On	Off	On	Off
1	Nahawa Diarra Berthe	02:28	37:32	3 - 4	69 - 47	-1	22	1.21	1.84	1	16	4	34	0	5	0	8
2	Natalia Chavez	02:34	37:26	8 - 9	64 - 42	-1	22	3.12	1.71	3	14	1	37	0	5	0	8
3	Nyah Wilson	30:50	09:10	51 - 38	21 - 13	13	8	1.65	2.29	13	4	30	8	4	1	8	0
5	Lara Langermann	20:47	19:13	40 - 35	32 - 16	5	16	1.92	1.67	8	9	14	24	4	1	4	4
10	Paris Lauro	03:40	36:20	4 - 9	68 - 42	-5	26	1.09	1.87	1	16	5	33	0	5	1	7
12	Aniyah Augmon	32:31	07:29	60 - 31	12 - 20	29	-8	1.85	1.60	13	4	33	5	4	1	6	2
14	Hulda Joaquim	21:20	18:40	40 - 29	32 - 22	11	10	1.88	1.71	9	8	20	18	3	2	4	4
21	Mackenzie Curtis	01:05	38:55	3 - 2	69 - 49	1	20	2.77	1.77	1	16	1	37	0	5	0	8
22	Charlotte Kohl	17:35	22:25	29 - 20	43 - 31	9	12	1.65	1.92	7	10	17	21	2	3	4	4
30	Paula Reus	34:26	05:34	65 - 40	7 - 11	25	-4	1.89	1.26	16	1	33	5	5	0	6	2
33	Vianè Cumber	32:44	07:16	57 - 38	15 - 13	19	2	1.74	2.06	13	4	32	6	3	2	7	1

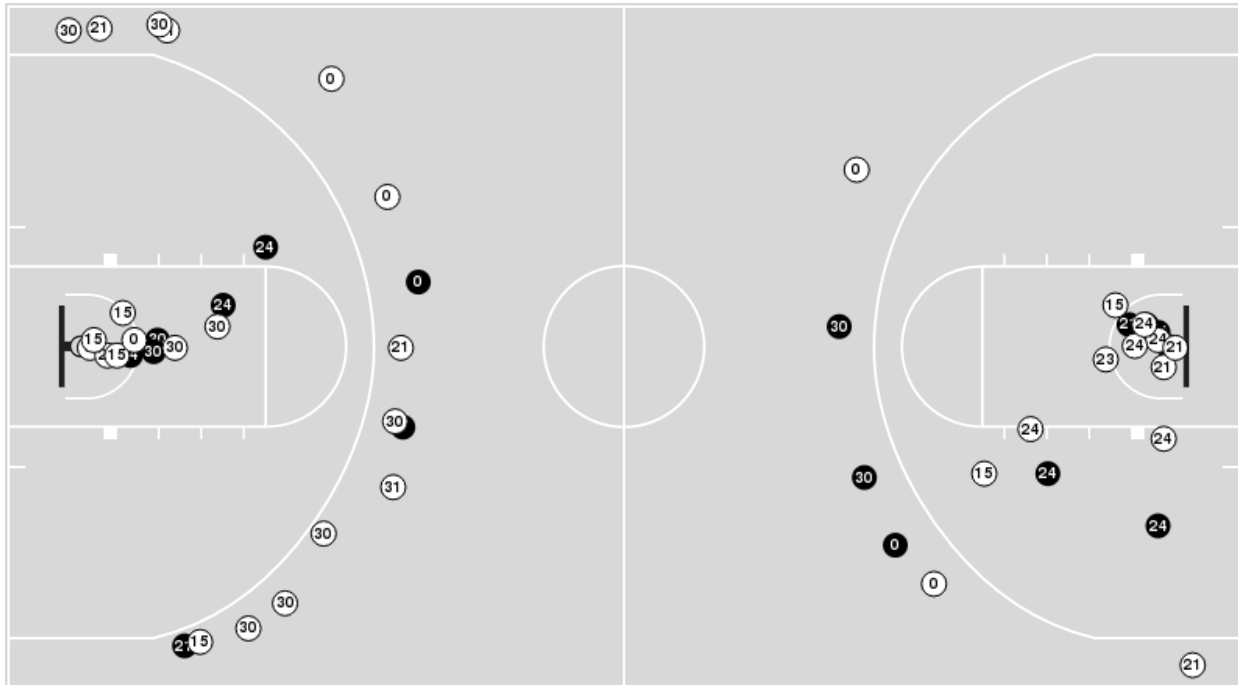


**Officials:** Michol Murray, Benny Luna, Nicole Leon

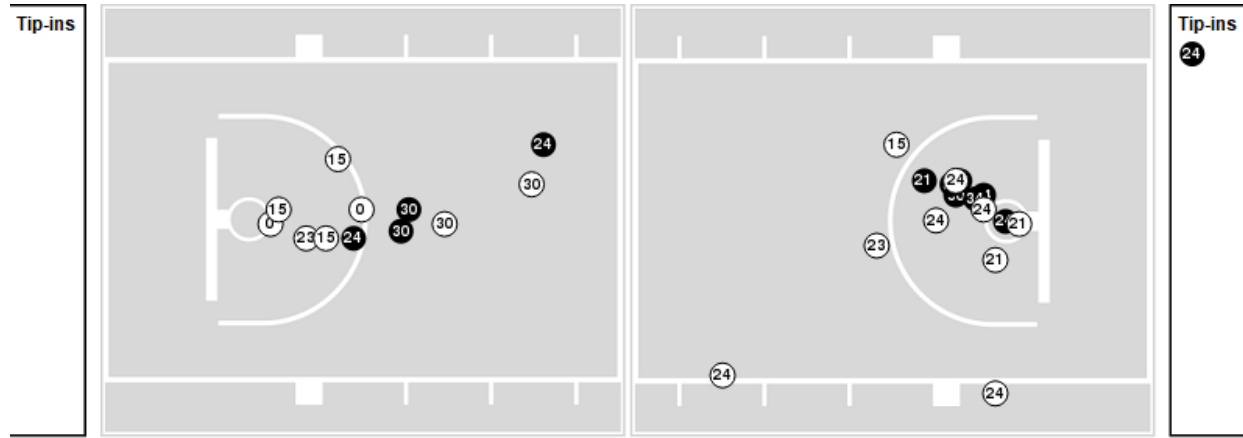
Players => 0, 1, 2, 3, 4, 11, 12, 13, 15, 21, 22, 23, 24, 30, 31, 32, 34, 44FG Types=>AllResults=>All

**San Jose St.**

**All Field Goals**



**Blow Up Chart**



● Made    ○ Missed    N - Player Number

San Jose St.	M/A	%
Field Goals	20/54	37
2 Points	14/32	44
3 Points	6/22	27
Free Throws	5/5	100

San Jose St.	M/A	%
Points in the Paint	22 (11 / 26)	42
Fast Break Points	2 (2/2)	100
Second Chance Points	6 (3/7)	43
Effective FG%	43	

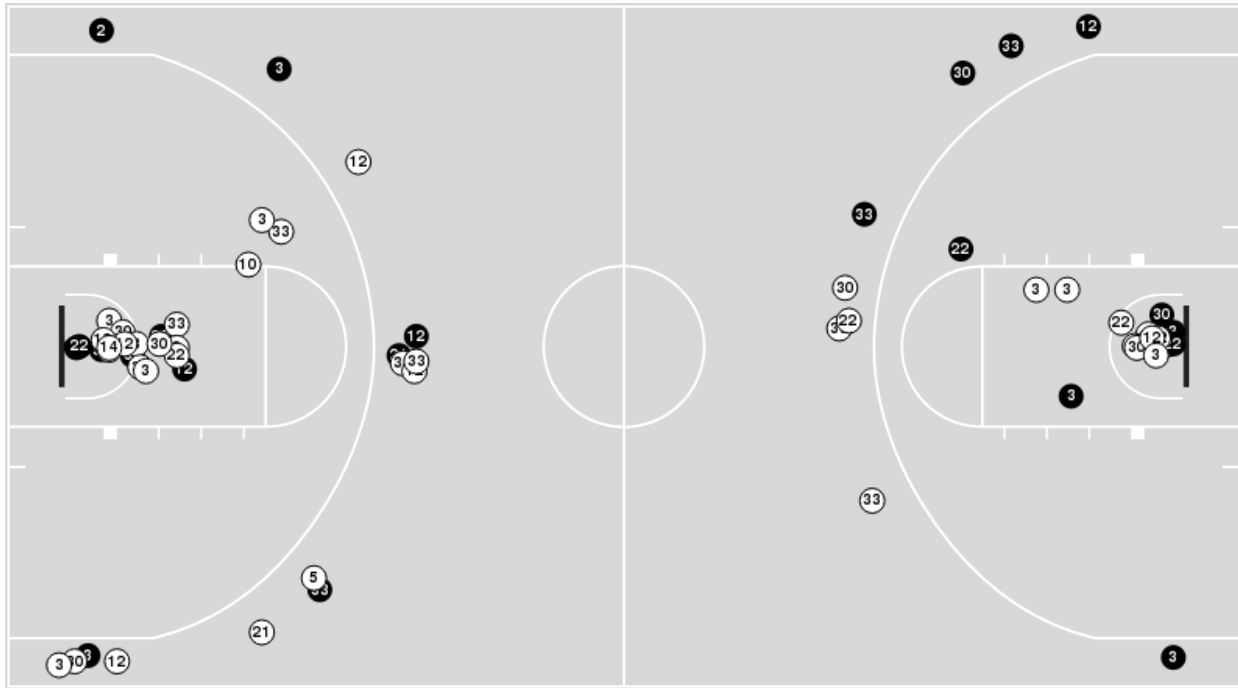


**Officials:** Michol Murray, Benny Luna, Nicole Leon

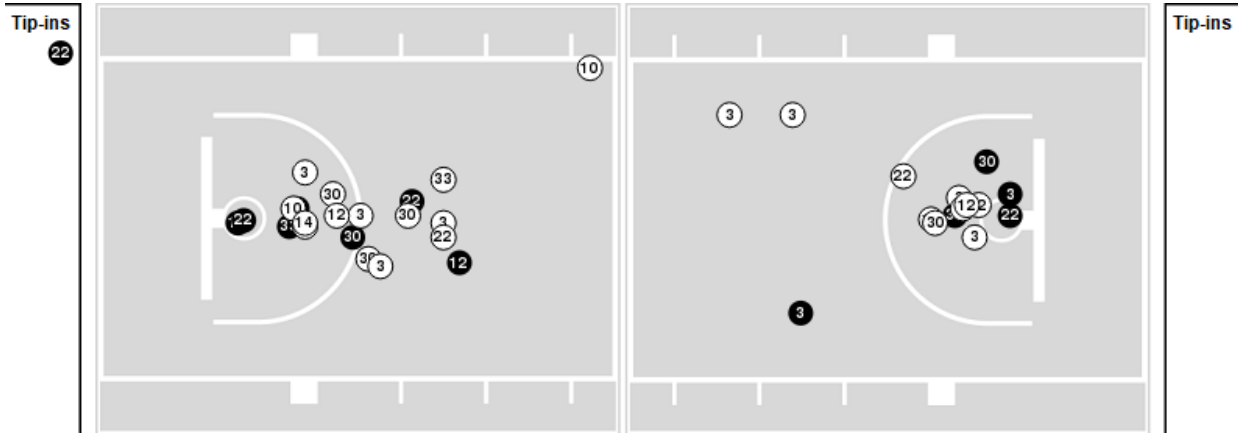
Players => 1, 2, 3, 4, 5, 10, 12, 14, 15, 21, 22, 24, 30, 33FG Types=>AllResults=>All

**New Mexico**

**All Field Goals**



**Blow Up Chart**



● Made ○ Missed N - Player Number

New Mexico	M/A	%
Field Goals	24/63	38
2 Points	13/39	33
3 Points	11/24	46
Free Throws	13/15	87

New Mexico	M/A	%
Points in the Paint	24 (12 / 35)	34
Fast Break Points	4 (3/3)	100
Second Chance Points	15 (6/13)	46
Effective FG%	47	



**San Jose St. at New Mexico**

02/14/24 The Pit, Albuquerque  
2023-24 Women's Basketball

**Game Time:** 7:00 PM  
**Game Duration:** 1:41  
**Attendance:** 4,807

**Officials:** Michol Murray, Benny Luna, Nicole Leon

**San Jose St.**

Lineup	Quarter On	Time On	Quarter Off	Time Off	Time on Court	Score	Score Diff	Reb	Stl	Tov	Ass	PPP
0- Summers S/ 15- Anderson M/ 23- Fluker A/ 24- Moreland A/ 30- Ma S/	1	10:00	1	07:56	02:04	2-0	2	3	0	1	1	0.5000
0- Summers S/ 15- Anderson M/ 23- Fluker A/ 30- Ma S/ 31- Grizelj M/	1	07:56	1	06:44	01:12	0-2	-2	0	0	0	0	0.0000
15- Anderson M/ 21- Kelemeni S/ 23- Fluker A/ 30- Ma S/ 31- Grizelj M/	1	06:44	1	04:56	01:48	0-5	-5	2	0	1	0	0.0000
0- Summers S/ 21- Kelemeni S/ 23- Fluker A/ 24- Moreland A/ 30- Ma S/	1	04:56	1	04:20	00:36	0-0	0	1	0	0	0	0.0000
0- Summers S/ 15- Anderson M/ 23- Fluker A/ 24- Moreland A/ 30- Ma S/	1	04:20	1	02:52	01:28	2-4	-2	1	0	0	0	0.6944
0- Summers S/ 15- Anderson M/ 21- Kelemeni S/ 30- Ma S/ 31- Grizelj M/	1	02:52	2	10:00	02:52	8-6	2	2	1	1	2	2.0619
0- Summers S/ 3- Nicholas N/ 21- Kelemeni S/ 30- Ma S/ 34- Smith S/	2	10:00	2	09:46	00:14	0-0	0	0	0	1	0	0.0000
0- Summers S/ 3- Nicholas N/ 21- Kelemeni S/ 24- Moreland A/ 30- Ma S/	2	09:46	2	08:40	01:06	0-4	-4	1	0	2	0	0.0000
0- Summers S/ 15- Anderson M/ 21- Kelemeni S/ 23- Fluker A/ 24- Moreland A/	2	08:40	2	06:41	01:59	2-3	-1	1	1	1	1	0.5000
0- Summers S/ 15- Anderson M/ 21- Kelemeni S/ 23- Fluker A/ 31- Grizelj M/	2	06:41	2	06:26	00:15	0-2	-2	0	0	0	0	0.0000
0- Summers S/ 15- Anderson M/ 23- Fluker A/ 30- Ma S/ 31- Grizelj M/	2	06:26	2	04:47	01:39	2-1	1	0	0	1	1	0.6667
0- Summers S/ 21- Kelemeni S/ 23- Fluker A/ 24- Moreland A/ 30- Ma S/	2	04:47	2	03:02	01:45	2-3	-1	4	0	1	1	0.6667
0- Summers S/ 21- Kelemeni S/ 23- Fluker A/ 30- Ma S/ 34- Smith S/	2	03:02	2	03:02	00:00	0-0	0	0	0	0	0	0.0000
0- Summers S/ 15- Anderson M/ 21- Kelemeni S/ 23- Fluker A/ 34- Smith S/	2	03:02	2	01:59	01:03	0-2	-2	1	1	0	0	0.0000
15- Anderson M/ 21- Kelemeni S/ 23- Fluker A/ 30- Ma S/ 31- Grizelj M/	2	01:59	2	01:12	00:47	0-0	0	1	0	0	0	0.0000
0- Summers S/ 15- Anderson M/ 21- Kelemeni S/ 30- Ma S/ 31- Grizelj M/	2	01:12	3	10:00	01:12	5-1	4	0	1	0	2	1.6667
0- Summers S/ 15- Anderson M/ 23- Fluker A/ 24- Moreland A/ 30- Ma S/	3	10:00	3	07:46	02:14	4-3	1	2	0	0	2	1.0000
0- Summers S/ 15- Anderson M/ 21- Kelemeni S/ 30- Ma S/ 31- Grizelj M/	3	07:46	3	06:12	01:34	0-5	-5	0	0	1	0	0.0000
0- Summers S/ 15- Anderson M/ 21- Kelemeni S/ 24- Moreland A/ 30- Ma S/	3	06:12	3	04:42	01:30	0-0	0	3	0	2	0	0.0000
0- Summers S/ 21- Kelemeni S/ 23- Fluker A/ 24- Moreland A/ 30- Ma S/	3	04:42	3	03:19	01:23	3-4	-1	0	0	2	1	1.0000
0- Summers S/ 15- Anderson M/ 21- Kelemeni S/ 30- Ma S/ 31- Grizelj M/	3	03:19	3	01:40	01:39	0-5	-5	1	0	1	0	0.0000
0- Summers S/ 15- Anderson M/ 21- Kelemeni S/ 24- Moreland A/ 30- Ma S/	3	01:40	3	01:02	00:38	2-0	2	0	0	0	1	2.0000
0- Summers S/ 15- Anderson M/ 21- Kelemeni S/ 30- Ma S/ 31- Grizelj M/	3	01:02	3	00:13	00:48	0-2	-2	2	0	1	0	0.0000
0- Summers S/ 21- Kelemeni S/ 23- Fluker A/ 30- Ma S/ 31- Grizelj M/	3	00:13	4	09:39	00:34	0-0	0	1	0	0	0	0.0000
0- Summers S/ 21- Kelemeni S/ 23- Fluker A/ 30- Ma S/ 34- Smith S/	4	09:39	4	09:39	00:00	0-0	0	0	0	0	0	0.0000
0- Summers S/ 15- Anderson M/ 21- Kelemeni S/ 23- Fluker A/ 34- Smith S/	4	09:39	4	08:26	01:13	2-0	2	2	0	1	1	1.0000
0- Summers S/ 15- Anderson M/ 21- Kelemeni S/ 23- Fluker A/ 31- Grizelj M/	4	08:26	4	05:57	02:29	5-2	3	2	0	0	1	1.6667
0- Summers S/ 15- Anderson M/ 23- Fluker A/ 24- Moreland A/ 30- Ma S/	4	05:57	4	05:30	00:27	0-0	0	0	0	0	0	0.0000
15- Anderson M/ 21- Kelemeni S/ 23- Fluker A/ 24- Moreland A/ 30- Ma S/	4	05:30	4	04:58	00:32	3-0	3	2	0	0	0	2.0833
0- Summers S/ 21- Kelemeni S/ 23- Fluker A/ 24- Moreland A/ 30- Ma S/	4	04:58	4	03:21	01:37	0-5	-5	2	0	2	0	0.0000
15- Anderson M/ 21- Kelemeni S/ 23- Fluker A/ 30- Ma S/ 31- Grizelj M/	4	03:21	4	03:04	00:17	0-1	-1	0	0	0	0	0.0000
15- Anderson M/ 23- Fluker A/ 24- Moreland A/ 30- Ma S/ 31- Grizelj M/	4	03:04	4	01:05	01:59	7-9	-2	0	0	0	2	2.3333
15- Anderson M/ 23- Fluker A/ 30- Ma S/ 31- Grizelj M/ 34- Smith S/	4	01:05	4	00:00	01:05	2-3	-1	0	0	0	1	2.0000





**San Jose St. at New Mexico**

02/14/24 The Pit, Albuquerque  
2023-24 Women's Basketball

**Game Time:** 7:00 PM  
**Game Duration:** 1:41  
**Attendance:** 4,807

**Officials:** Michol Murray, Benny Luna, Nicole Leon

**New Mexico**

Lineup	Quarter On	Time On	Quarter Off	Time Off	Time on Court	Score	Score Diff	Reb	Stl	Tov	Ass	PPP
3- Wilson N/ 12- Augmon A/ 22- Kohl C/ 30- Reus P/ 33- Cumber V/	1	10:00	1	04:56	05:04	7-2	5	7	0	1	2	0.8750
5- Langermann L/ 12- Augmon A/ 14- Joaquim H/ 30- Reus P/ 33- Cumber V/	1	04:56	1	01:54	03:02	7-4	3	2	0	0	1	1.4706
3- Wilson N/ 5- Langermann L/ 14- Joaquim H/ 30- Reus P/ 33- Cumber V/	1	01:54	2	10:00	01:54	3-6	-3	1	1	1	1	1.5000
3- Wilson N/ 5- Langermann L/ 12- Augmon A/ 22- Kohl C/ 30- Reus P/	2	10:00	2	06:41	03:19	7-2	5	2	2	1	1	1.1667
3- Wilson N/ 5- Langermann L/ 12- Augmon A/ 22- Kohl C/ 33- Cumber V/	2	06:41	2	06:26	00:15	3-0	3	0	0	0	0	2.0833
3- Wilson N/ 5- Langermann L/ 12- Augmon A/ 14- Joaquim H/ 33- Cumber V/	2	06:26	2	04:47	01:39	0-2	-2	0	0	1	0	0.0000
3- Wilson N/ 12- Augmon A/ 14- Joaquim H/ 30- Reus P/ 33- Cumber V/	2	04:47	2	03:56	00:51	3-2	1	0	0	0	1	1.5000
3- Wilson N/ 12- Augmon A/ 22- Kohl C/ 30- Reus P/ 33- Cumber V/	2	03:56	2	01:59	01:57	2-0	2	3	0	1	1	0.5000
3- Wilson N/ 5- Langermann L/ 22- Kohl C/ 30- Reus P/ 33- Cumber V/	2	01:59	2	01:22	00:37	0-0	0	1	0	0	0	0.0000
3- Wilson N/ 5- Langermann L/ 14- Joaquim H/ 30- Reus P/ 33- Cumber V/	2	01:22	2	01:12	00:10	0-0	0	0	0	0	0	0.0000
3- Wilson N/ 5- Langermann L/ 10- Lauro P/ 14- Joaquim H/ 33- Cumber V/	2	01:12	3	10:00	01:12	1-5	-4	1	0	1	0	0.5319
3- Wilson N/ 12- Augmon A/ 22- Kohl C/ 30- Reus P/ 33- Cumber V/	3	10:00	3	07:46	02:14	3-4	-1	2	0	1	1	0.7500
3- Wilson N/ 12- Augmon A/ 14- Joaquim H/ 30- Reus P/ 33- Cumber V/	3	07:46	3	04:42	03:04	5-0	5	5	1	1	2	0.8333
5- Langermann L/ 12- Augmon A/ 14- Joaquim H/ 30- Reus P/ 33- Cumber V/	3	04:42	3	01:02	03:40	11-5	6	2	1	0	2	1.8707
3- Wilson N/ 5- Langermann L/ 14- Joaquim H/ 30- Reus P/ 33- Cumber V/	3	01:02	3	00:00	01:01	0-0	0	1	0	0	0	0.0000
1- Diarra Berthe N/ 5- Langermann L/ 10- Lauro P/ 14- Joaquim H/ 33- Cumber V/	3	00:00	4	10:00	00:00	0-0	0	0	0	0	0	0.0000
1- Diarra Berthe N/ 5- Langermann L/ 10- Lauro P/ 12- Augmon A/ 14- Joaquim H/	4	10:00	4	08:37	01:23	0-2	-2	3	0	0	0	0.0000
3- Wilson N/ 12- Augmon A/ 22- Kohl C/ 30- Reus P/ 33- Cumber V/	4	08:37	4	05:57	02:40	2-5	-3	2	0	0	0	0.6667
3- Wilson N/ 12- Augmon A/ 14- Joaquim H/ 30- Reus P/ 33- Cumber V/	4	05:57	4	02:34	03:23	10-3	7	5	0	0	2	1.5060
2- Chavez N/ 3- Wilson N/ 5- Langermann L/ 22- Kohl C/ 30- Reus P/	4	02:34	4	01:05	01:29	5-7	-2	0	0	0	2	2.5000
1- Diarra Berthe N/ 2- Chavez N/ 5- Langermann L/ 10- Lauro P/ 21- Curtis M/	4	01:05	4	00:00	01:05	3-2	1	1	0	0	1	3.0000



**San Jose St. at New Mexico**

02/14/24 The Pit, Albuquerque  
2023-24 Women's Basketball

**Game Time:** 7:00 PM  
**Game Duration:** 1:41  
**Attendance:** 4,807

**Officials:** Michol Murray, Benny Luna, Nicole Leon

**San Jose St.**

Lineup	Time	Score	Score Diff	Pts/Min	Reb	Stl	Tov	Ass	PPP
0- Summers S/ 15- Anderson M/ 21- Kelemeni S/ 30- Ma S/ 31- Grizelj M/	08:05	13-19	-6	1.6076	5	2	4	4	0.9366
0- Summers S/ 15- Anderson M/ 23- Fluker A/ 24- Moreland A/ 30- Ma S/	06:13	8-7	1	1.2869	6	0	1	3	0.7353
0- Summers S/ 21- Kelemeni S/ 23- Fluker A/ 24- Moreland A/ 30- Ma S/	05:21	5-12	-7	0.9346	7	0	5	2	0.5000
15- Anderson M/ 21- Kelemeni S/ 23- Fluker A/ 30- Ma S/ 31- Grizelj M/	02:52	0-6	-6	0.0000	3	0	1	0	0.0000
0- Summers S/ 15- Anderson M/ 23- Fluker A/ 30- Ma S/ 31- Grizelj M/	02:51	2-3	-1	0.7018	0	0	1	1	0.4000
0- Summers S/ 15- Anderson M/ 21- Kelemeni S/ 23- Fluker A/ 31- Grizelj M/	02:44	5-4	1	1.8293	2	0	0	1	1.6667
0- Summers S/ 15- Anderson M/ 21- Kelemeni S/ 23- Fluker A/ 34- Smith S/	02:16	2-2	0	0.8824	3	1	1	1	0.5000
0- Summers S/ 15- Anderson M/ 21- Kelemeni S/ 24- Moreland A/ 30- Ma S/	02:08	2-0	2	0.9375	3	0	2	1	0.5000
0- Summers S/ 15- Anderson M/ 21- Kelemeni S/ 23- Fluker A/ 24- Moreland A/	01:59	2-3	-1	1.0084	1	1	1	1	0.5000
15- Anderson M/ 23- Fluker A/ 24- Moreland A/ 30- Ma S/ 31- Grizelj M/	01:59	7-9	-2	3.5294	0	0	0	2	2.3333
0- Summers S/ 3- Nicholas N/ 21- Kelemeni S/ 24- Moreland A/ 30- Ma S/	01:06	0-4	-4	0.0000	1	0	2	0	0.0000
15- Anderson M/ 23- Fluker A/ 30- Ma S/ 31- Grizelj M/ 34- Smith S/	01:05	2-3	-1	1.8462	0	0	0	1	2.0000
0- Summers S/ 21- Kelemeni S/ 23- Fluker A/ 30- Ma S/ 31- Grizelj M/	00:34	0-0	0	0.0000	1	0	0	0	0.0000
15- Anderson M/ 21- Kelemeni S/ 23- Fluker A/ 24- Moreland A/ 30- Ma S/	00:32	3-0	3	5.6250	2	0	0	0	2.0833
0- Summers S/ 3- Nicholas N/ 21- Kelemeni S/ 30- Ma S/ 34- Smith S/	00:14	0-0	0	0.0000	0	0	1	0	0.0000
0- Summers S/ 21- Kelemeni S/ 23- Fluker A/ 30- Ma S/ 34- Smith S/	00:00	0-0	0	NaN	0	0	0	0	0.0000



San Jose St. at New Mexico

02/14/24 The Pit, Albuquerque  
2023-24 Women's Basketball

Game Time: 7:00 PM  
Game Duration: 1:41  
Attendance: 4,807

Officials: Michol Murray, Benny Luna, Nicole Leon

New Mexico

Lineup	Time	Score	Score Diff	Pts/Min	Reb	Stl	Tov	Ass	PPP
3- Wilson N/ 12- Augmon A/ 22- Kohl C/ 30- Reus P/ 33- Cumber V/	11:55	14-11	3	1.1748	14	0	3	4	0.7368
3- Wilson N/ 12- Augmon A/ 14- Joaquim H/ 30- Reus P/ 33- Cumber V/	07:18	18-5	13	2.4658	10	1	1	5	1.2295
5- Langermann L/ 12- Augmon A/ 14- Joaquim H/ 30- Reus P/ 33- Cumber V/	06:42	18-9	9	2.6866	4	1	0	3	1.6917
3- Wilson N/ 5- Langermann L/ 12- Augmon A/ 22- Kohl C/ 30- Reus P/	03:19	7-2	5	2.1106	2	2	1	1	1.1667
3- Wilson N/ 5- Langermann L/ 14- Joaquim H/ 30- Reus P/ 33- Cumber V/	03:05	3-6	-3	0.9698	2	1	1	1	0.7500
3- Wilson N/ 5- Langermann L/ 12- Augmon A/ 14- Joaquim H/ 33- Cumber V/	01:39	0-2	-2	0.0000	0	0	1	0	0.0000
2- Chavez N/ 3- Wilson N/ 5- Langermann L/ 22- Kohl C/ 30- Reus P/	01:29	5-7	-2	3.3708	0	0	0	2	2.5000
1- Diarra Berthe N/ 5- Langermann L/ 10- Lauro P/ 12- Augmon A/ 14- Joaquim H/	01:23	0-2	-2	0.0000	3	0	0	0	0.0000
3- Wilson N/ 5- Langermann L/ 10- Lauro P/ 14- Joaquim H/ 33- Cumber V/	01:12	1-5	-4	0.8333	1	0	1	0	0.5319
1- Diarra Berthe N/ 2- Chavez N/ 5- Langermann L/ 10- Lauro P/ 21- Curtis M/	01:05	3-2	1	2.7692	1	0	0	1	3.0000
3- Wilson N/ 5- Langermann L/ 22- Kohl C/ 30- Reus P/ 33- Cumber V/	00:37	0-0	0	0.0000	1	0	0	0	0.0000
3- Wilson N/ 5- Langermann L/ 12- Augmon A/ 22- Kohl C/ 33- Cumber V/	00:15	3-0	3	12.0000	0	0	0	0	2.0833
1- Diarra Berthe N/ 5- Langermann L/ 10- Lauro P/ 14- Joaquim H/ 33- Cumber V/	00:00	0-0	0	0.0000	0	0	0	0	0.0000